

ST. NICHOLAS - DE ALM



Builder: [DE ALM](#)

LOA: 65' 0" (19.94 m)

Year Built: 2019

Beam: 18' 0" (5.64 m)

Model: Delfino 60

Min Draft: 5' 5" (1.65 m)

Price: \$1,500,000 USD Subject to change.

Cruising Speed: 7 Knots (8.06 MPH)

[See full listing on our website](#)

Location: Limassol, Cyprus

Max Speed: 10 Knots (11.51 MPH)

TABLE OF CONTENTS

OVERVIEW	3
SPECIFICATIONS	4
Basic Information	4
Dimensions	4
Speed, Capacities and Weight	4
Accommodations	5
Hull and Deck Information	5
Engine Information	5
GALLERY	6
DETAILED DESCRIPTION	14
CONTACTS	15

OVERVIEW

A singular vessel, imagined and executed to the revered standards of Dutch workmanship and personally refined at every stage of design and construction by an experienced owner. Almost nothing aboard is off-the-shelf; every system has been appointed to a premium specification. Reliable German Deutz propulsion provides steady power with remarkably low acoustic signature, while augmented generator capacity, an oversized fuel reserve and a comprehensive waste-management system extend self-sufficiency. Double glazing throughout, a dedicated quarantine area and a host of other enhancements further elevate the platform, conferring genuine autonomy for a transatlantic passage and positioning the yacht as a formidable contender among long-range Explorer Yachts.

Outstanding seakeeping stems from exacting naval architecture, visible in the purposeful sweep of the hull lines and the boat's measured demeanor in motion. This graceful Expedition Yacht performs equally well as a Bluewater Long Range Cruiser, a Trawler Yacht or an ocean-going Luxury Motor Yacht, and will repay its next owner handsomely for years ahead. A rare and compelling opportunity on the market.

SPECIFICATIONS

Basic Information

Category:
Motor yachts

Year Built:
2019

Sub category:
Expedition Yachts

Country:
Cyprus

Model Year:
2019

Dimensions

LOA:
65' 0" (19.94 m)

Beam:
18' 0" (5.64 m)

Min Draft:
5' 5" (1.65 m)

Speed, Capacities and Weight

Cruise Speed:
7 Knots (8.06 MPH)

Water Capacity:
264.17 Gallons

Max Speed:
10 Knots (11.51 MPH)

Fuel Capacity:
2113.38 Gallons

Accommodations

Crew Berths:

2

Hull and Deck Information

Hull Material:

Steel Yachts

Hull Designer:

N/A

Deck Material:

Steel

Interior Designer:

Mahonie

Hull Configuration:

N/A

Engine Information

Engines:

2

Engine Type:

Inboard

Manufacturer:

Vetus-Deutz

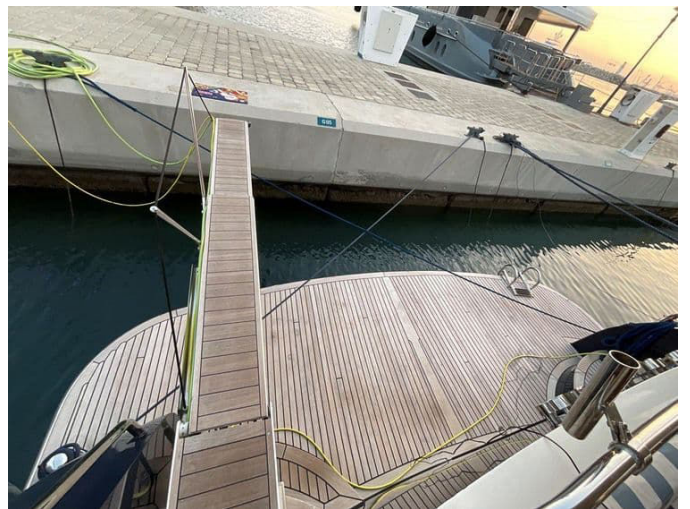
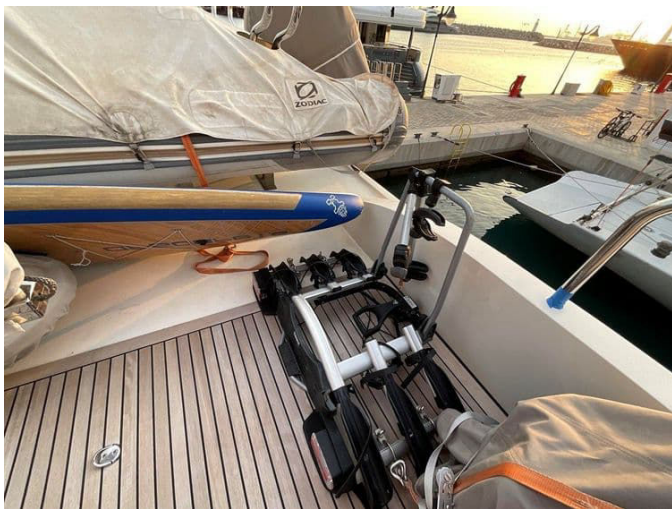
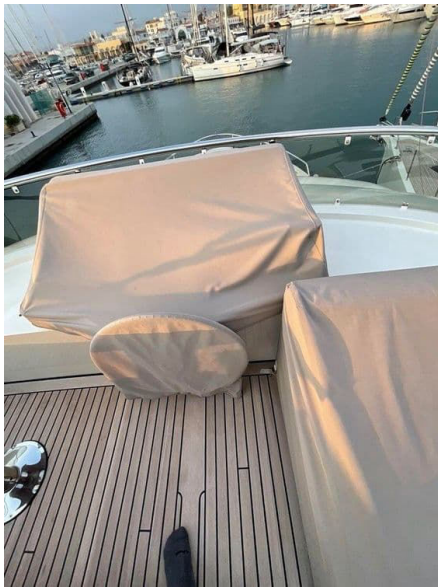
Fuel Type:

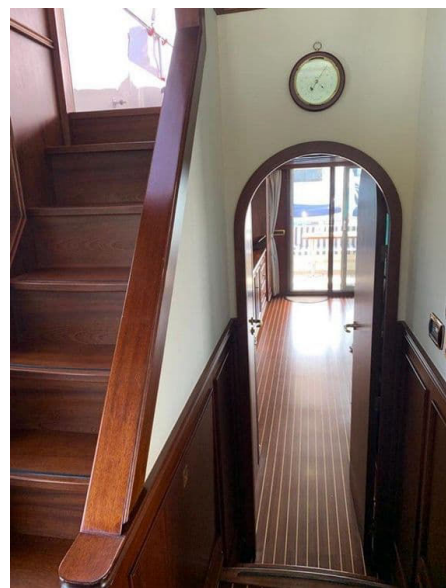
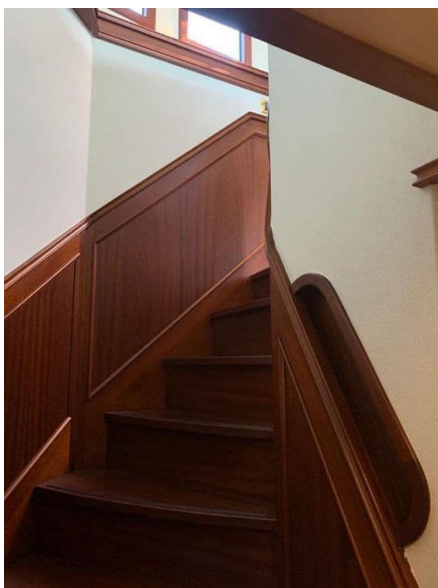
Diesel

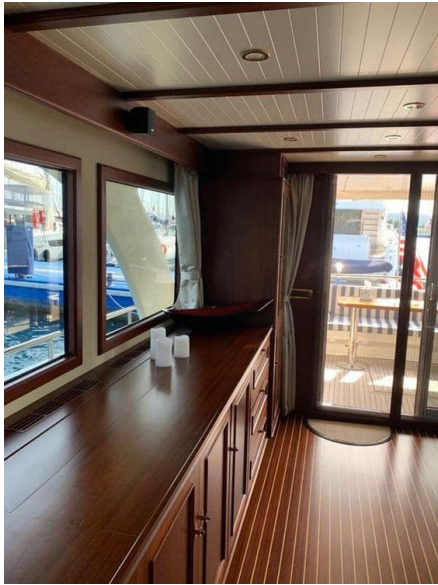
GALLERY

















DETAILED DESCRIPTION

General

Crafted by DE ALM in 2019, this 19.94m (65'6") yacht pairs a robust steel hull and a 55-ton displacement with a generous 5.64m (18' 7") beam for steadfast poise, while a 1.65m (5' 5") draft opens up shallow harbors and coastal hideaways. The interior by Mahonie elevates everyday cruising with refined materials and thoughtful detailing, shaping spaces that feel calm, contemporary, and distinctly bespoke.

CONTACTS

Shestakov Yacht Sales is a brokerage company specializing in the sale and service of yachts worldwide. The company offers services for buying and selling both new and used motor yachts, sailing vessels, and luxury superyachts. They also provide yacht registration, insurance, technical maintenance, crew selection, and charter organization services across the U.S., Canada, Latin America, the Caribbean, and the Bahamas.

The founder and lead broker of the company is Andrey Shestakov, a licensed and certified expert with extensive experience in marine engineering and shipbuilding.

The company has an extensive network of partnerships with major yacht manufacturers worldwide and provides services in multiple languages, including Russian, Ukrainian, Spanish, and English. The office is in Dania Beach, Florida, USA.

For more information and to view available yachts, you can visit the company's official website: <https://shestakovyachtsales.com>

Contact details

Phone: +1(954)274-4435

Email: andrey@shestakovyachtsales.com

Address



1380 Weeping Willow Way, Hollywood,
Florida 33019