



SHESTAKOV

Yacht Sales

GIGI - PACIFIC MARINER



Builder: [PACIFIC MARINER](#)

LOA: 65' 0" (19.81 m)

Year Built: 2007

Beam: 17' 0" (5.26 m)

Model: Pilothouse

Max Draft: 16' 5" (5 m)

Price: \$949,000 USD Subject to change.

Cruising Speed: 21 Knots (24.17 MPH)

[See full listing on our website](#)

Location: Aventura, United States

Max Speed: 25 Knots (28.77 MPH)

If you would like to buy a yacht **GIGI - PACIFIC MARINER** or would like help answering any questions concerning purchasing, selling, or chartering a yacht, please call **+1(954)274-4435** or click here on <https://shestakovyachtsales.com>

TABLE OF CONTENTS

OVERVIEW	3
SPECIFICATIONS	4
Basic Information	4
Dimensions	4
Speed, Capacities and Weight	4
Accommodations	4
Hull and Deck Information	5
Engine Information	5
GALLERY	6
DETAILED DESCRIPTION	16
CONTACTS	30

OVERVIEW

GIGI is an exceptional 65 foot Pacific Mariner pilothouse motor yacht, hull number 55 of only 62 built, benefitting from the final refinements of the production run together with an array of owner directed enhancements. With just 1,250 original hours and maintained in pristine, turnkey condition, she represents an outstanding value within the 60'-70' Pilothouse Motoryacht segment and is attractively priced for immediate acquisition. Ready for immediate cruising, she invites you to step aboard, bring your belongings, and enjoy effortless passagemaking.

SPECIFICATIONS

Basic Information

Model Year:
2007

Country:
United States

Year Built:
2007

Dimensions

LOA:
65' 0" (19.81 m)

Max Draft:
16' 5" (5 m)

Beam:
17' 0" (5.26 m)

Speed, Capacities and Weight

Cruise Speed:
21 Knots (24.17 MPH)

Water Capacity:
285 Gallons

Max Speed:
25 Knots (28.77 MPH)

Fuel Capacity:
1100 Gallons

Accommodations

Total Heads:
3

Crew Cabin:
1

Hull and Deck Information

Hull Material:

Fiberglass and Plastic Yachts

Hull Designer:

Bill Garden

Deck Material:

Fiberglass

Interior Designer:

N/A

Hull Configuration:

N/A

Engine Information

Engines:

2

Engine Type:

Inboard

Manufacturer:

MTU

Fuel Type:

Diesel

GALLERY



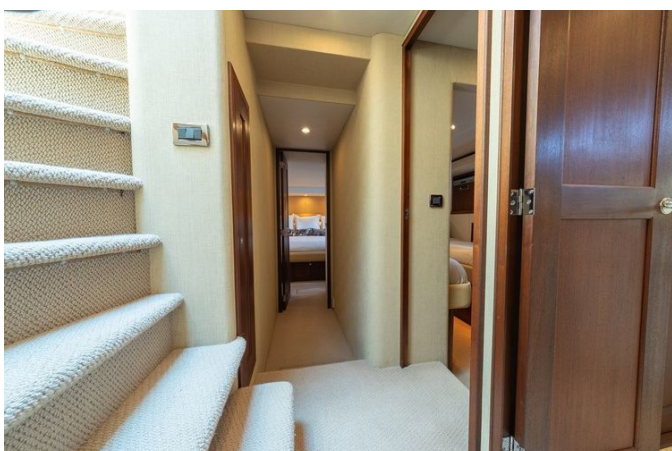




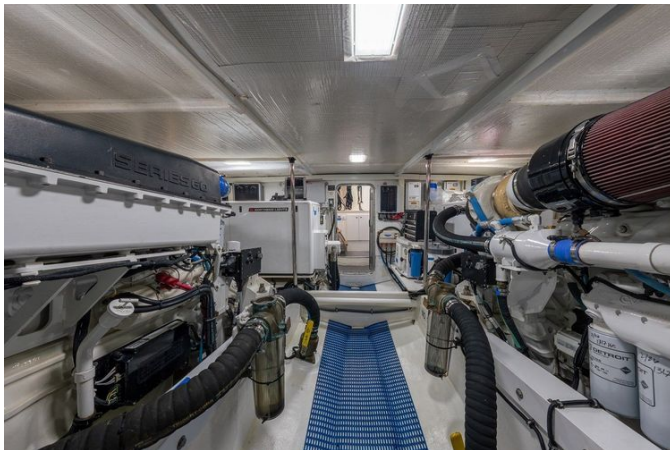














DETAILED DESCRIPTION

Overview

GIGI is an exceptional example of the celebrated 65' Pacific Mariner, hull number 55 of 62, refreshed with the latest series refinements and a host of owner installed upgrades. Recording only 1,250 original hours and maintained to an excellent Bristol condition, she represents a rare blend of careful use and meticulous upkeep in the 60'–70' Pilothouse Motoryacht segment. Offered at an aggressively attractive price to reflect outstanding value, GIGI is presented completely turnkey—simply bring your personal effects and depart for cruising without delay.

Walkthrough

Entry to the interior is possible either through port and starboard sliding doors into the Pilothouse or from the Aft Deck into the Salon. The Salon is luxuriously arranged with a generous L-shaped sofa with integrated storage on the starboard side, two storage-equipped chairs to port, and a wet bar alongside an entertainment center installed in the forward bulkhead. Proceeding forward and up three steps brings you into the Galley/Pilothouse, where an L-shaped forward-facing settee provides an ideal vantage for taking in the view while underway. Continuing forward, a circular stairwell descends to the guest accommodations. Forward in the bow, the VIP Stateroom offers a centerline queen berth and an en suite Head; midships on the port side, a twin stateroom with side-by-side berths features an en suite head that also functions as the day head. Aft, a spacious full-beam Master Stateroom is appointed with a centerline king berth and an en suite Head with a custom tub-shower. Access to the Crew Quarters and the engine room is via the Aft Deck.

Accommodations

Access to the accommodation deck is via the starboard side of the pilothouse, where an elegant circular stair ascends on carpeted steps fitted with runners and a matching mahogany banister, setting a refined tone as one descends into the private living quarters.

Positioned midships and spanning the full beam, the master stateroom is a tranquil sanctuary centered on a king-size berth fitted with an inner-spring mattress and storage drawers beneath, an upholstered headboard and soft indirect lighting that soothes the space. Twin nightstands are accentuated by wall sconces while a depth finder with alarm provides an added layer of security; convenient communications are handled through a Panasonic phone and intercom. Storage is generous, with twin cedar-lined closets, stainless steel opening port lights with privacy shades, and matching port and starboard dressers finished in granite. The headliner is complemented by dimmable lighting and upholstered bulkheads framed in rich mahogany trim, doors and cabinetry, while comfort is assured by air-conditioning ducts equipped with silencers. The entertainment ensemble includes a mahogany-framed flat-screen TV, DVD player and AM/FM digital amplifier, and the suite is rounded out with practical amenities such as a central vacuum outlet, a digital thermostat and a built-in electric wall heater (220V, 750W).

The master en suite continues the theme of luxury with a custom walk-in tub-shower enclosed by glass sliding doors, a Headhunter freshwater head, and a sink set into a marble countertop fitted with a polished stainless Grohe faucet. A beveled mirror medicine cabinet, dedicated air-conditioning duct and exhaust fan, a stainless steel opening port light with privacy shade, marble flooring, under-counter storage and tasteful overhead lighting complete this spa-like bathroom.

The guest cabin with twin berths is appointed for comfort and convenience,

offering twin berths with drawers beneath, an upholstered headboard and an aft bulkhead finished in smoked mirror with individual reading lamps. A nightstand crowned with a granite countertop and storage drawers sits nearby, while natural light and privacy are controlled with an opening port light and privacy shade. Entertainment includes a flat-screen TV with remote, a DVD player and an AM/FM stereo with CD and speaker, and a built-in book and magazine rack adds a practical touch. Climate and ambiance are managed via a digital air-conditioning control, indirect rope lighting beneath the berths, overhead halogen lighting on a dimmer and an air-conditioning duct with silencer, with a cedar-lined closet and a privacy door completing the accommodations.

Serving both as the guest cabin's en suite and the day head, the dual-access bathroom features an air-conditioning duct, a beveled mirror medicine cabinet, an opening port light with privacy shade and a marble countertop with sink and polished stainless Grohe faucets. Practical luxury is evident in the under-counter storage, Headhunter freshwater head, generous shower, marble flooring, exhaust fan, overhead lighting and a convenient towel rack.

Forward, the VIP stateroom is arranged around a centerline queen berth with drawers below and an upholstered headboard set against a padded, upholstered forward bulkhead gently illuminated by wall sconces. Port and starboard stainless steel opening port lights with privacy shades are complemented by an overhead escape and ventilating hatch with screen and blackout shade to balance light and airflow. Entertainment is provided by a mahogany-framed flat-screen TV with DSS receiver, a DVD player and an AM/FM stereo with CD and speakers, while a built-in magazine and book rack, a digital air-conditioning thermostat, an air-conditioning duct with silencer, a cedar-lined hanging locker, overhead halogen lighting on a dimmer, a privacy door and indirect under-berth rope lighting ensure comfort and functionality. The VIP en suite offers a Headhunter freshwater head and a large stall shower

with a glass door, supported by an air-conditioning duct, exhaust fan and overhead halogen lighting. The space is finished with a beveled mirror medicine cabinet, a marble countertop with sink and polished stainless Grohe faucet, storage below and marble flooring, creating an elegant and efficient private bathroom.

Foredeck / side decks

Forward anchoring is handled by a Lewmar 24V 3,000 pound windlass with chain wildcat, set to deploy a 75 pound CQR plow anchor on 300 feet of 3/8 inch high tensile chain, all seated on a stainless steel anchor mount with roller and safety pin. The foredeck's fiberglass nonskid surface conceals a generous locker accessed through a 26-by-26 inch Bomar hatch, and both fresh- and seawater washdowns are conveniently positioned for deck maintenance. Mooring is managed with two 12 inch stainless cleats with chafe guards forward, while the side decks are outfitted with quarter and three quarter 12 inch stainless cleats, also protected by chafe guards. A substantial bow and side deck rail, incorporating a central lifeline and boarding gates to port and starboard, provides secure perimeter protection, and 12 inch walkaround catwalks with safety rails plus a cabin side grab rail make movement around the yacht assured and comfortable. The trunk cabin invites relaxation with a recessed sun pad complete with cushions and twin grab rails, and the VIP stateroom benefits from a 28-by-28 inch Bomar opening escape hatch that supplies natural light and emergency egress. For precision maneuvering in tight quarters, a starboard side flip out wing control brings clutch and throttle levers, start/stop controls, and bow and stern thruster operation within immediate reach. Functional deck fittings include fuel and water fills to port and starboard and a holding tank pump out deck fitting to port, while aft quarters are equipped with stainless steel Lewmar docking windlasses on both port and starboard.

Flybridge

A tinted tempered glass windshield protects the helm and is maintained by a 24-inch wiper with two speeds and an integrated washer, while the centerline helm is appointed with a covered 24-inch stainless steel Destroyer-style wheel and a Stidd helm companion seat featuring arm and footrests with fitted covers; the helm console also incorporates two recessed drink holders. Entry to the bridge is by a Lexan sliding hatch and an opening hinged door, and convenience is extended with an additional 110V GFI outlet protected by a waterproof cover. To port a dedicated cabinet conceals an electric BBQ grill, and to starboard an L-shaped settee with plush cushions conceals storage beneath and is supplied with a protective cover, arranged around a Corian cocktail/dining table set for four that stands 31 inches high on a stainless steel pedestal. Both the flybridge and boat deck are finished in nonskid fiberglass and are bordered by custom 1 1/2-inch polished stainless steel removable staple rails with a central safety bar. Practical, safety and finishing details include a stainless steel life ring holder, fore and aft deck drains, a flag staff holder at the boat deck overhang, and a 28 by 28 inch access hatch from the aft deck to the boat deck fitted with a Lexan insert by Bomar. Tender handling is managed by a 24V hydraulic davit by Nautical Structures with power rotation and boom, complemented by dedicated tender chocks and the tender itself.

Flybridge electronics

The flybridge presents a comprehensively integrated navigation and control ensemble crafted for assured command and refined operation: a Simrad digital depth finder complete with alarm and protective cover and a Simrad knot meter likewise fitted with a cover provide essential speed and depth information, while a Furuno NavNet system featuring a ten-inch monitor functions as chart plotter, radar, CCTV and depth graph, all shielded by its own

cover. Steering and heading references are supplied by a Ritchie three-and-a-half-inch magnetic compass, a Simrad AP autopilot and a Simrad R135 rudder angle indicator with cover, and visibility and communication are enhanced by an ACR URP-102 searchlight and a dedicated VHF radio. Vessel handling is further refined through a remote stabilizer control and hydraulic bow and stern thruster controls with on/off switch, accompanied by resonant Kahlenburg dual-trumpet horns for unmistakable signaling. Engine operation is simplified at the helm with main engine start and stop controls, electronic MTU clutch and throttles with synchronizer and low idle functionality, and an MTU digital engine monitor display protected by covers, while speakers with volume control and strategically placed deck courtesy lights complete an elegant, highly functional helm environment.

Tender

This twelve-foot hard-bottom inflatable has been thoughtfully appointed with a lift bridle and secure tie-downs and is propelled by a 60-horsepower four-stroke outboard featuring electric start, power trim and tilt, and a fuel/water separator filter for assured performance. The center-console helm is refined with a stainless-steel wheel and a tinted windscreen guarded by a substantial grab rail, while a fire extinguisher provides essential safety. Comfort and convenience are addressed with a cushioned fore seat that conceals storage beneath and a well-upholstered helm seat with cushions, a supportive backrest and additional underseat stowage. When ashore the tender is protected by a full storage cover, and electrical needs are managed by a 12-volt battery housed in a box with a shutoff switch for tidy, reliable power control.

Pilothouse

The pilothouse marries commanding sightlines with solid construction, featuring forward windows one-half inch thick, protected by a dedicated windshield cover and serviced by two-speed windshield wipers with washers, 24V/39 1/2 inches. At the center is a centerline helm with an integrated chart flat and chart drawers, anchored by an Edson wheel with a thirty-one-inch teak rim, while port and starboard sliding doors with retractable bug screens provide effortless access to the decks. The helmsman and companion are accommodated in Stidd seats with arms and adjustable footrests, upholstered to match in Ultra Leather, and a raised built-in settee in the same Ultra Leather, with storage beneath, faces an elegant six-person mahogany dining table finished in satin with an expansion leaf and dust cover. Comfort and convenience are assured by a built-in electric room heater, 220V/750W, a windshield defogger system, a central vacuum outlet and plush pilothouse carpet underfoot. Above, a Whisper Wall style headliner with downlights on dimmers, integrated stereo speakers with volume control and accordion-style privacy blinds by Hunter Douglass create an inviting atmosphere, while side pilothouse and salon windows are tinted and three-eighths inch thick, and generous headroom of six feet seven inches enhances the sense of spaciousness.

Pilothouse electronics

The pilothouse is fitted with an extensive, salon-worthy electronics package designed for uncompromising control and situational awareness: a digital Simrad depth finder with alarm and a Simrad knot log provide foundational depth and speed data, while three NEC MultiSync 17-inch flat-panel displays — configurable to mix and match input sources — present charting and sensor feeds with clarity. Vessel security and systems visibility are supported by an

Elbex EXS-142 CCTV system with pan functionality monitoring the engine room and transom, and long-range detection is provided by a Furuno 64-mile radar with a 4' open array. Navigation is further reinforced by a C-Map chart system alongside an independent Nobeltec charting package with wireless keyboard and mouse, a Furuno GPS with DGPS, and Simrad wind speed and direction instruments, all integrated into the bridge environment and complemented by MTU LED engine monitor displays. Course keeping and communications are handled by a Simrad autopilot with plug-in handheld remote, an ICOM VHF with two-way hailer and a five-inch Ritchie magnetic compass, while maneuvering is aided by bow and stern thruster controls with simple on/off switching and a manual engine clutch and throttle backup for added redundancy. Crew convenience and connectivity include a Panasonic intercom phone, an onboard computer with Wave WiFi antenna and KVH satellite TV, and bridge lighting such as a chart light with red lens; safety systems comprise five auto/manual bilge pumps with dedicated sump pumps and an upgraded high-water bilge alarm in the engine room, an ACR URP 102 searchlight for night operations, and ride-smoothing Naiad Multi Sea II digital stabilizers with oversized fins.

Galley up

Positioned just aft of the pilothouse, the galley is a chef-ready sanctuary appointed with a 22 cu. ft. GE side-by-side stainless-steel refrigerator featuring an in-door water and ice dispenser, a GE Profile stainless-steel cooking suite with a four-burner cooktop and convection oven, and a built-in GE Spacemaker stainless-steel microwave. Daily cleanup is simplified by a KitchenAid stainless-steel dishwasher and a matching KitchenAid stainless-steel trash compactor, while a double deep-dish stainless-steel sink with disposal is paired with a Grohe single-lever pullout-sprayer faucet for precise control and convenience. Storage is intelligently arranged with an under-counter Lazy

Susan and pull-out drawers, ample under-counter locker and drawer capacity, and a buffet topped in granite that provides dedicated dish storage plus additional drawers. An overhead ventilating hatch with screen and blackout shade lets you tailor light and airflow, and the space is finished with a rich granite countertop, warm Amtico wood-grain flooring, and overhead downlighting on dimmers to shift the mood from bright task lighting to soft evening ambiance.

Electrical system

Engineered to deliver quiet, dependable energy throughout, the yacht's comprehensive 12V/24V/110V/220V electrical architecture is centered on two Northern Lights generators: a 20 kW, 1800 RPM set with 1,150 hours, enclosed in a sound shield and fitted with a PTO that drives the Naiad hydraulic bow thruster rated at 25 hp, and a 16 kW, 1800 RPM set with 1,090 hours, also sound shielded. Additional acoustic and vibration mitigation is provided by secondary isolation motor mounts and water separating mufflers on the gensets, which discharge underwater to further minimize noise. Power management is sophisticated yet user friendly, featuring a 3,000 watt inverter with integrated charger and its own breaker panel, an isolation transformer with boost and low voltage shutoff functions, and port and starboard Glendinning Cablemasters handling 75 foot, 50 amp shore cords. The battery arrangement includes individual battery switches plus a battery parallel switch, supported by dedicated chargers—a 24V 40 amp unit and a 12V 20 amp unit—to ensure reliable starting and house power. Distribution is logically organized with a 24V breaker panel in the engine room, a 12V electronic breaker panel in the pilothouse, and a 24V electric breaker panel in the pilothouse complete with volt and amp meter displays, all complemented by 120V/240V/inverter breaker panels and a separate inverter panel in the main salon. Convenience and control are elevated with generator remote starts that

incorporate water temperature, voltage, oil pressure and hour meters alongside start/stop controls, a cable TV/telephone inlet on the portside aft deck, a 30 amp inlet on the starboard aft deck, and breaker panels throughout that feature backlit labeling for effortless operation.

Mechanical equipment and engine room

Propulsion is supplied by MTU Series 60 engines rated at 825 hp, each showing approximately 1,250 hours and fitted with air separators. These mains are paired with ZF gears, model ZF 350A, specified with a ratio of 2.077.1. The fuel system is extensively protected and polished: the main engines are served by dual Racor 1000 filters with a selector valve and vacuum gauge, the generators use a single Racor 500, and fuel polishing is augmented by a BADOR fuel clean system that includes an additional Racor 1000. Complementary systems include a Reverso 24V automatic oil-change system for both mains and gensets and an automatic/manual Fireboy FE 241 fire suppression system.

Engine-room air intake protection is provided by Delta T demisters with 24V intake blowers, and ride comfort is assured by Naiad 254 stabilizers fitted with upgraded fins; the port engine drives the stabilizer pump while the starboard engine carries a power steering assist pump. The running gear comprises two-and-a-half-inch shafts with dripless seals and spare seals in place on the shafts, turning 31 x 37.5 inch five-blade Nibral propellers, with a matched spare set available.

Fuel capacity is held in aluminum tanks finished with Imron and monitored by sight gauges as well as electric gauges at the lower helm; an automatic crossover allows fueling from either port or starboard dock fills. The engine room is thoughtfully appointed for serviceability and safety, featuring an additional 110V GFI outlet with waterproof cover, a hot-and-cold freshwater faucet, rudders with dripless seals, a watertight door, and overhead 24V lighting, all beneath approximately five feet eight inches of headroom.

Offshore endurance is supported by a Sea Recovery watermaker equipped with an automatic freshwater flush and UV filtration.

The domestic systems mirror the same attention to detail: a 220V hot water heater with an engine heat exchanger provides 28 gallons of hot water, supported by a ten-gallon accumulating tank and a 285-gallon 316L stainless steel freshwater tank. Hot water is circulated by a dedicated pump, and a dockside water inlet with a pressure-reducing valve supplies the system; freshwater washdowns are located on both the fore and aft decks and shutoff valves are fitted at every outlet. A 24V Headhunter freshwater pump is paired with a 24V Headhunter backup, and an aft-deck hot-and-cold shower adds post-swim convenience. Sanitation is handled by Headhunter jet-type heads that discharge to a 125-gallon fiberglass holding tank with a deck pump-out fitting on the portside deck, and a crew quarters electric marine head is also installed. Climate control was updated in 2024–25 to a reverse-cycle arrangement centered on a 60,000 BTU chilled-water plant with a Soft Start system, all regulated by digital thermostats for quiet, precise temperature control throughout the yacht.

Salon

The main salon is a refined living area framed by large, eye-level tinted windows, each 3/8 inch thick and fitted with privacy shades, while a glass aft bulkhead opens via a sliding door equipped with a retractable bug screen and privacy curtain. Warm Sapela mahogany paneling and camphor wood lambrequins surround a plush carpet set upon a sound-absorbing pad, and a sophisticated headliner punctuated by halogen lighting on a dimmer creates an inviting atmosphere. A comfortable L-shaped sofa, complete with custom storage drawers, faces an electric HiLo dining table mounted on a slide and finished in camphor with a satin sheen, accompanied by custom chairs that include storage, a dedicated table and a lamp. Year-round comfort is provided

by a built-in electric room heater, 220V 750 watt, and onboard communications are handled through a Panasonic phone that services cellular, landline, intercom and satellite connections.

Forward on the bulkhead a thoughtfully appointed wet bar boasts a granite countertop with a flush-mounted polished stainless steel sink and cold water faucet, complemented by a U-Line icemaker with a matched face panel and a custom wine chiller. Intelligent storage solutions include accessory drawers, dedicated liquor and DVD compartments, plus crystal and glass cabinets, while a custom art spotlight for the TV drop panel, operated by a dimmer switch, gives display pieces or the television its own gallery-quality focus.

The entertainment center completes the salon's leisure amenities with a full home theater system anchored by a TV housed in a council drop panel and paired with a DSS receiver. Playback and audio are handled by a DVD player, an AM/FM receiver and a surround sound receiver driving a surround speaker system with subwoofer, all conveniently controlled by a single remote.

Aft deck

The aft deck is laid in fine teak and features a flush, built-in storage locker alongside an integrated seat fitted with removable cushions and a protective cover, the seat also providing straightforward access to the crew and engine room. Al fresco dining is centered around a custom satin-finished teak table with its own cover, mounted on polished stainless-steel pedestals and accompanied by matching teak chairs, while a covered cockpit wing control station gives accurate handling through dedicated bow and stern thruster controls. Practical conveniences are seamlessly integrated, including a freshwater washdown, adjustable-volume speakers, an overhead CCTV camera looking aft, bespoke hull-side fender slide rails to port and starboard, a manual pull for the engine room fire system, cable masters on both sides, and robust fifteen-inch stainless-steel grab rails port and starboard. A child-safety gate

provides passage to the swim step and the generous five-foot swim platform below, reached via two steps from the aft deck with each tread illuminated by deck courtesy lights. The platform is appointed with removable stainless-steel Euro staple rails, six-inch stainless-steel pop-up cleats, beneath-deck storage, dedicated spare propeller storage holding a matched set of spare props, a stainless rub rail, an automatic-float-switch bilge pump, and a fold-down stainless-steel swim ladder.

Crew quarters

Reached directly from the aft deck seating, the crew quarters are fully air-conditioned with digital climate controls and provide 6' 5" of headroom, creating a comfortable, temperature-stable environment. A polished stainless-steel stairwell with teak steps and a secure grab rail descends into a carefully appointed living area featuring two 6' 6" berths, each furnished with storage compartments beneath and individual reading lights for personal comfort. Practical onboard conveniences include a countertop with a stainless-steel sink, hot-and-cold faucet and storage below, alongside a dedicated washer and dryer. Comfort is further assured by a built-in 220V, 750-watt electric room heater, while an opening portlight and a separate storage cabinet ensure ventilation and orderly stowage.

Broker remarks

GIGI is a superb example of the ever-popular 65' Pacific Mariner, hull #55 of a total of 62 hulls built, featuring the latest updates to the series along with numerous owner-installed upgrades. With only 1250 original hours and maintained in Bristol condition, she is offered at an attractive price and delivers outstanding value in the 60' to 70' Pilothouse Motoryacht segment, with no deferred maintenance. Turnkey and ready for immediate

cruising—just bring your luggage—GIGI is certain to be claimed quickly and will reward her next owners with many years of safe, comfortable, and luxurious cruising.

Exclusions

Meticulous care has been taken to catalog the equipment and systems aboard GIGI; nevertheless, certain personal effects will remain on board. Unless an item is expressly listed within this specification, it should be regarded as excluded from the sale and will not transfer at closing. A full exclusions schedule will be provided at the time of sale.

CONTACTS

Shestakov Yacht Sales is a brokerage company specializing in the sale and service of yachts worldwide. The company offers services for buying and selling both new and used motor yachts, sailing vessels, and luxury superyachts. They also provide yacht registration, insurance, technical maintenance, crew selection, and charter organization services across the U.S., Canada, Latin America, the Caribbean, and the Bahamas.

The founder and lead broker of the company is Andrey Shestakov, a licensed and certified expert with extensive experience in marine engineering and shipbuilding.

The company has an extensive network of partnerships with major yacht manufacturers worldwide and provides services in multiple languages, including Russian, Ukrainian, Spanish, and English. The office is in Dania Beach, Florida, USA.

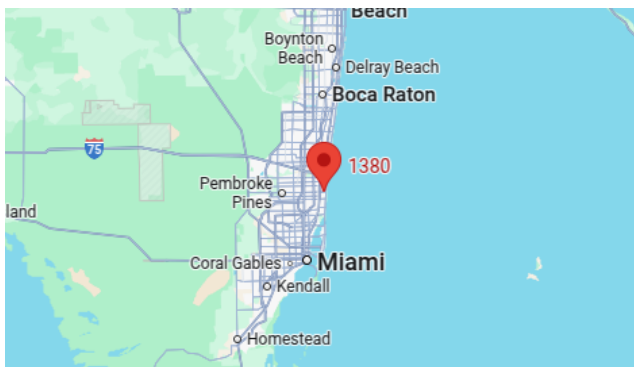
For more information and to view available yachts, you can visit the company's official website: <https://shestakovyachtsales.com>

Contact details

Phone: +1(954)274-4435

Email: andrey@shestakovyachtsales.com

Address



1380 Weeping Willow Way, Hollywood,
Florida 33019