

PRIME TIME - VIKING



Builder: [VIKING](#)

LOA: 65' 0" (19.81 m)

Year Built: 2002

Beam: 18' 0" (5.72 m)

Model: 65 Enclosed Bridge

Max Draft: 19' 8" (6 m)

Price: \$895,000 USD Subject to change.

Cruising Speed: 28 Knots (32.22 MPH)

[See full listing on our website](#)

Location: Charleston, United States

Max Speed: 34 Knots (39.13 MPH)

TABLE OF CONTENTS

OVERVIEW	3
SPECIFICATIONS	5
Basic Information	5
Dimensions	5
Speed, Capacities and Weight	6
Hull and Deck Information	6
Engine Information	6
GALLERY	7
DETAILED DESCRIPTION	24
CONTACTS	30

OVERVIEW

PRIME TIME, a 2002 Viking 65' Sportfish, embodies the yard's storied lineage, marrying uncompromising performance with refined elegance whether pitting her in a tournament or slipping along on a long bluewater passage. Propelled by twin MTU 16V2000 M90 engines rated at 1,800 hp, she offers formidable thrust delivered with a quiet, composed ride, and her generous 65-foot platform provides ample cockpit real estate for serious angling as well as relaxed living aboard while underway. This enclosed-bridge convertible is the ideal synthesis of a purpose-built sportfisherman and a luxury motor yacht, inviting both anglers and leisure-minded guests to enjoy the same elevated standard at sea.

The centerpiece of PRIME TIME is the climate-controlled enclosed bridge and adjunct salon, an all-weather helm and lounge that preserves comfort for captain, owner, and guests in any condition. Below, an upgraded four-stateroom, four-head layout enhances privacy and flexibility. Entry to the main salon is through an offset starboard door that maximizes usable interior volume. To port a broad U-shaped settee conceals deep storage perfect for tackle and gear, while to starboard the ship's electrical panel, entertainment center, clear ice machine, and a graceful spiral staircase provide access to the bridge. Forward, a fully equipped galley with dinette and a commodious pantry supports extended cruising. Down below, the laundry center sits to starboard with crew and engine room access to port. Accommodations include an owner's suite to port with ensuite, a forward VIP with a crossover berth and private head, and an upgraded starboard guest cabin offering a single berth with its own head — an intelligent, yacht-quality arrangement for a serious fishing platform that also serves as a comfortable cruiser.

Recent investments and service history enhance her turnkey appeal. Fresh nonskid was applied in 2023 and topsides were painted in 2021, while the MTU

3,000-hour service was completed in 2019. Equipment highlights include a 700 GPD watermaker (2018), Marquipt 1,500 lb davit, cockpit mezzanine seating (2020), ice chipper, and FLIR thermal imaging. Yard periods in June 2025 added new underwater lights, Zipwake trim tabs, antifouling touch-ups, polished hull and topsides, and PropSpeed prep, following a comprehensive June 2024 service that included bottom paint, new shaft seals, tuned props, PropSpeed, and hull/topsides polish. For buyers seeking a pedigreed Viking convertible that can win offshore and pamper guests on the return, PRIME TIME is ready — equal parts tournament sportfisher, fishing yacht, and elegant bluewater motor yacht.

SPECIFICATIONS

Basic Information

Category:
Motor yachts

Year Built:
2002

Sub category:
Sport Fisherman

Country:
United States

Model Year:
2002

Dimensions

LOA:
65' 0" (19.81 m)

Max Draft:
19' 8" (6 m)

Beam:
18' 0" (5.72 m)

Speed, Capacities and Weight

Cruise Speed:

28 Knots (32.22 MPH)

Water Capacity:

360 Gallons

Max Speed:

34 Knots (39.13 MPH)

Fuel Capacity:

2000 Gallons

Gross Tonnage:

82 Pounds

Hull and Deck Information

Hull Material:

Fiberglass and Plastic Yachts

Hull Designer:

N/A

Deck Material:

Fiberglass

Interior Designer:

N/A

Hull Configuration:

N/A

Engine Information

Engines:

2

Engine Type:

Inboard

Manufacturer:

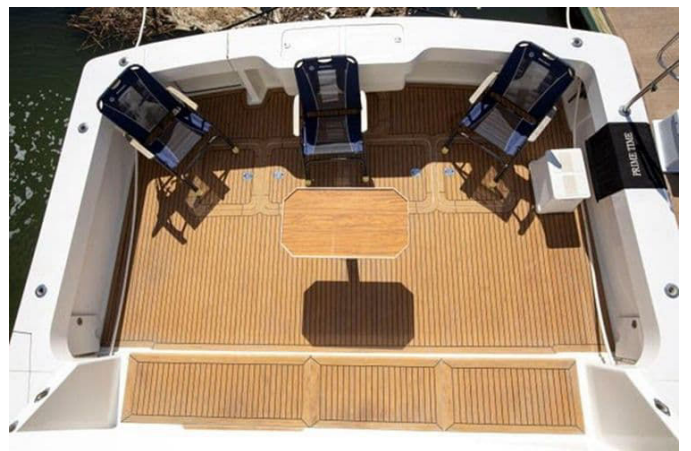
MTU

GALLERY

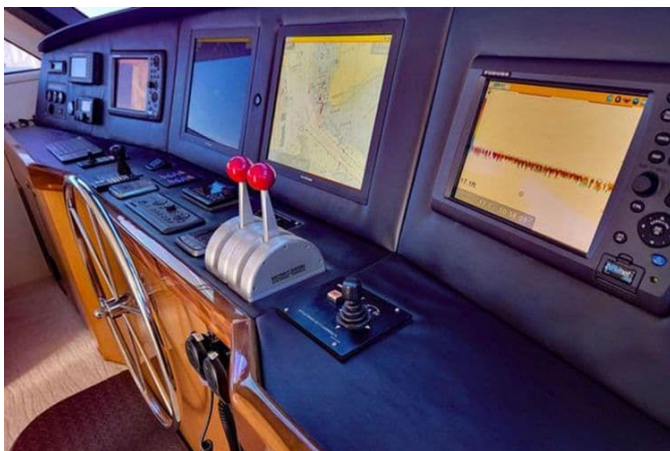












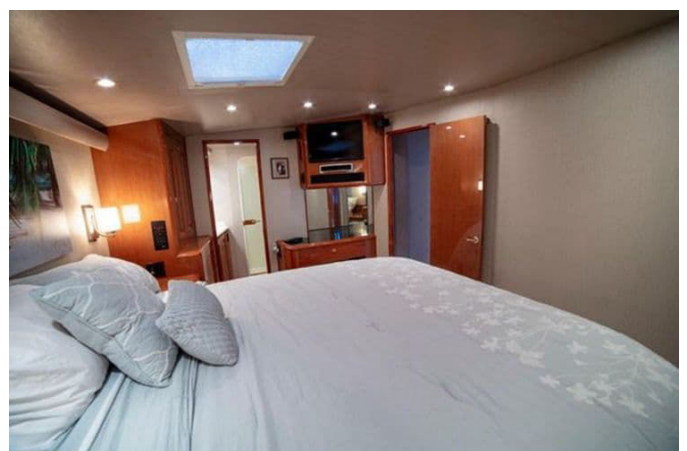






















DETAILED DESCRIPTION

Description

The 2002 Viking 65' PRIME TIME is a study in Viking excellence, a sportfisher that fuses the ferocity of MTU 16V2000 M90 power—one thousand eight hundred horsepower per side—with the poise and polish of true luxury cruising. Her sixty five feet deliver the volume and authority to chase serious game offshore while indulging guests with the quiet comfort of a blue water motor yacht, so performance, range and refinement travel in lockstep. The signature of PRIME TIME is her enclosed bridge with a dedicated helm and an additional salon, a climate controlled command and social space that allows the captain, owner and guests to enjoy every mile regardless of weather. Below, the upgraded four stateroom, four head layout elevates privacy and versatility. Entering the main salon through a starboard offset door that maximizes interior real estate, you're welcomed by a generous U shaped sofa to port with deep storage beneath—perfect for tackle and gear—while to starboard the ship's electrical panel, entertainment area, ice machine and an elegant spiral staircase gather form and function. Forward, a fully equipped galley and dinette pair with a large pantry to support extended cruising. Below deck, the laundry center sits to starboard, with crew stateroom and engine room access through a portside crew door. The port master stateroom features an ensuite head, the forward VIP adds a crossover berth and private head, and the upgraded starboard guest stateroom offers a single berth with its own guest head. PRIME TIME's equipment highlights underscore her pedigree: new nonskid in 2023 and painted topsides in 2021; MTU 16V2000 M90 engines at one thousand eight hundred horsepower with the three thousand hour service completed in 2019; a watermaker rated at seven hundred GPD added in 2018; a Marquipt one thousand five hundred pound

davit; a mezzanine added in 2020; an ice chipper for relentless fishability; and FLIR thermal vision that stretches your day and tightens your margins. Recent maintenance speaks to vigilant stewardship, including new underwater lights 6/2025, new Zipwake trim tabs 6/2025, antifouling touched up 6/2025, Prep Speed 6/2025, and hull and topsides polished 6/2025. In 6/2024 she received fresh bottom paint, new shaft seals, tuned props, Prop Speed, and a full hull/topsides polish. Everything essential has been considered, refreshed, or upgraded so she can launch into the next season ready to impress.

Additional descriptions

Purpose built to win the cockpit, PRIME TIME greets you with a mezzanine seating area cushioned for long days on the bite, set over a synthetic teak sole that wears hard and looks timeless. A Release Marine teak fighting chair with rocket launcher stands center stage, flanked by a transom livewell/fish box and an Eskimo ice maker feeding the fish box. Rupp triple spreader outriggers with electric teaser reels expand your spread, while six clearing rod holders in the house haunches and six gunwale mounted rod holders keep every rod ready. Four under gunwale cockpit speakers and additional JL Audio speakers bring the soundtrack, with under gunwale lighting to set the mood. Practicality abounds with a transom door and flip gate, a bait freezer, a refrigerated cockpit drink box, a deck mounted fish box with macerator pump, port and starboard cable masters, twelve volt under gunwale DC power, fresh and saltwater washdowns, tackle drawer storage, stainless steel gas shocks on sole hatches, a stainless steel boarding handrail, five deck fish wells and a fitted cockpit cover, plus clean, direct access to the engine room. Step inside the salon to an L shaped sandstone distressed leather sofa with generous storage below, paired with a high gloss teak coffee table with a cedar bullnose and a matching high gloss teak end table with drawers. Entertainment is effortless with a large Panasonic LCD TV on a mechanical lift with satellite

access, BOSE speakers, a ship's brass clock and barometer, and new carpet underfoot. The teak & holly threshold at the salon door whispers tradition, while a MAXX ICE ice maker and a bar with an onyx granite top and high gloss teak bullnose—served by two black leather swivel stools—invite relaxed evenings. Direct and indirect lighting sculpt the ambiance, and the spiral staircase rises to the enclosed flybridge with architectural grace. The galley is a culinary studio finished in high gloss teak cabinetry and onyx granite countertops. An American Standard sink anchors a capable appliance suite: Kenmore four burner cooktop, Kenmore convection oven, Sharp Carousel microwave, and Kenmore dishwasher, supported by Sub Zero under counter refrigeration and freezers and a forward pantry. Ventilation comes via an exhaust fan, and the high gloss wood plank floor unifies the space. In 2023, the cold chain was renewed with four new refrigerators, two new freezers, and a dedicated wine cooler. Adjacent, the dinette features U shaped Laguna Sand leather seating with storage beneath, a high gloss teak table capped in onyx granite on a teak pedestal and base, two large storage cabinets, a SEA 157 VHF radio, and the continuity of a high gloss plank wood sole. A functional foyer adds a starboard side Maytag washer and dryer, two storage cabinets and a central vacuum system. The port master stateroom presents an athwartship island berth with storage below, high gloss teak end tables with storage both sides, two reading lights, twin cedar lined hanging lockers with full length mirrored doors, and a high gloss teak credenza with an onyx granite countertop and drawer storage. Comfort and entertainment arrive via a flat screen TV, JVC stereo CD/DVD player, and classic brass clock and barometer, with designer fabric wall coverings, an overhead hatch with shade, rope lighting beneath the bed, overhead dimmer lighting and Cruise Air heating/air conditioning with SMX control. Private access leads to the master head, where linen storage with a full length mirrored door meets a full size shower with Rainhead hand held, a VacuFlush freshwater head, an exhaust fan, wood plank floor, a vanity with a granite countertop and two door mirror,

an oval sink with storage underneath, shower light, custom wallpaper, a mirrored ceiling and refined overhead lighting. Forward, the VIP stateroom is arranged with crossover berths, offering a queen to port with storage below and a single to starboard with a storage locker beneath. High gloss teak shelves, a cedar lined hanging locker, a Toshiba flat screen TV, BOSE audio, designer wallpaper, a teak forward bulkhead, an overhead hatch with shade, and Cruise Air climate with SMX control complete the suite, with private access to the ensuite head. Inside, a granite sink and countertop with cabinets beneath pair with a mirrored medicine cabinet, VacuFlush freshwater head, stall shower with automatic sump, shower light, exhaust fan, wood plank floor, a mirrored ceiling and designer wallpaper. The starboard guest stateroom provides a single berth with storage below, a Toshiba TV, a cedar lined hanging locker with storage, a reading light, an overhead hatch with shade, Cruise Air climate with SMX control and direct access to its ensuite head. That guest head mirrors the VIP's upscale finish with a granite sink and countertop with cabinetry, a mirrored medicine cabinet, VacuFlush freshwater head, a stall shower with automatic sump, wood plank floor, a mirrored ceiling, an exhaust fan, a bi fold shower door, shower light, designer wallpaper and day head access flexibility. The crew cabin adds upper and lower bunks with outboard storage, a cedar lined hanging locker, overhead lighting, a Samsung flat screen TV, BOSE audio, Cruise Air with SMX control, an engine room access door and private entry to the crew head, which carries an oval sink and vanity, mirrored medicine cabinet, VacuFlush freshwater head, bi fold shower door, stall shower with automatic sump and an exhaust fan. The enclosed bridge is reached via the internal staircase and invites with an L shaped Laguna Sand leather sofa and a high gloss teak coffee table. Natural light filters through an overhead hatch with shade, while a bar with sink, refrigerator and Toshiba flat screen TV and BOSE speakers mounted in the aft corners keep conversation flowing over a carpeted sole. At the helm, center steering places the captain at a Stidd leather helm chair flanked by two double

companion Stidd leather chairs. Electronic controls, a compass and a bow thruster stick fall easily to hand, with MTU main engine displays and MTU engine controls delivering precise feedback. Two large spotlights crown the hardtop, and a Moritz ship's alarm system watches silently. Electronics are expedition grade: two Furuno BB NavNet 3D twelve inch multifunction displays, a FLIR Navigator infrared camera, a Simrad autopilot control system, an Elbex camera system, two ICOM M504 VHF radios at the helm, KVH M& dome satellite TV, two Raymarine multifunction displays, a six foot open array Furuno radar, an ACR RCL six hundred searchlight, and two nineteen inch Nauticomp screens tied into the Furuno BB NavNet 3D backbone. Aft, the bridge deck readies the spread with an aft rail mounting a seven rod rocket launcher, a powder coated aft bridge ladder and handrail, and an overhead teaser reel box loaded with Miya Epoch CX6 reels. Aft and forward facing cockpit controls with bow thruster, a Simrad autopilot, a Ritchie compass, an aft facing bench seat with cushions, a center rigger, an Elbec camera, spreader lights and a powder coated ladder to the hardtop round out a tournament savvy command post. On the bow, a secure bow rail frames robust ground tackle and a tender solution: an AB Nautilus eleven foot one inch from 2011 powered by a forty horsepower Evinrude, served by a Marquipt one thousand five hundred pound davit with hydraulic lift and rotation. Below, the engine room is all business: twin MTU 16V 2000 engines at one thousand eight hundred horsepower with the three thousand hour service completed in 2019, an Onan twenty one point five kilowatt generator with three thousand six hundred hours and an Onan twenty seven point five kilowatt generator with three thousand six hundred hours, dual Racors and gauges at the entry, an Aqua Whisper Sea Recovery four hundred gallon water maker, shelving over both generators, an oil change system, fuel prime pumps, Delta T air boxes, an Alpha Laval fuel polisher, additional fuel priming capability, engine room blowers, battery disconnect switches, Racor secondary fuel filters, Cruise Air marine air conditioning and heat, Charles ISO

Boost systems port and starboard, engine room cameras, a Sea Fire fire system, main engine start/stop controls, two Newmar battery chargers and an Eskimo ice maker for the fish box. An airline from the engine room compressor to the dockside utility box in the cockpit adds smart serviceability. This is a machinery space built for reliability, access and seakeeping without compromise.

CONTACTS

Shestakov Yacht Sales is a brokerage company specializing in the sale and service of yachts worldwide. The company offers services for buying and selling both new and used motor yachts, sailing vessels, and luxury superyachts. They also provide yacht registration, insurance, technical maintenance, crew selection, and charter organization services across the U.S., Canada, Latin America, the Caribbean, and the Bahamas.

The founder and lead broker of the company is Andrey Shestakov, a licensed and certified expert with extensive experience in marine engineering and shipbuilding.

The company has an extensive network of partnerships with major yacht manufacturers worldwide and provides services in multiple languages, including Russian, Ukrainian, Spanish, and English. The office is in Dania Beach, Florida, USA.

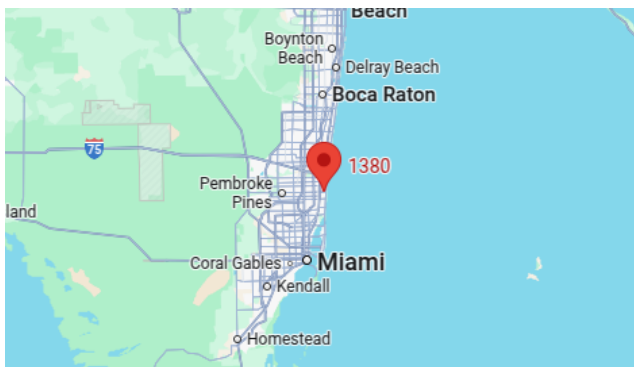
For more information and to view available yachts, you can visit the company's official website: <https://shestakovyachtsales.com>

Contact details

Phone: +1(954)274-4435

Email: andrey@shestakovyachtsales.com

Address



1380 Weeping Willow Way, Hollywood,
Florida 33019