



ENTERPRISE - SWIFTSHIPS

**Builder:**

[SWIFTSHIPS](#)

Year Built:

1983

Model:

Charter Boat

Price:

[See on website](#)

Location:

Newport, United States

Max Speed:

15 Knots (17.26 MPH)

LOA:

65' 0" (19.81 mm)

Beam:

17' 0" (5.18 mm)

Min Draft:

16' 5" (5 mm)

Max Draft:

19' 8" (6 mm)

Cruising Speed:

12 Knots (13.81 MPH)

If you would like to buy a yacht **ENTERPRISE - SWIFTSHIPS** or would like help answering any questions concerning purchasing, selling, or chartering a yacht, please call **+1(954)274-4435** or click here on <https://shestakovyachtsales.com>

TABLE OF CONTENTS

Overview 6

Specifications 7

 Basic Information 7

 Dimensions 7

 Speed, Capacities and Weight 7

 Accommodations 8

 Hull and Deck Information 8

Gallery 9

Contacts 17

OVERVIEW

1983 Swiftships Charter Yacht

Presenting the C/V Enterprise: Your Ultimate Charter Yacht

Year of Construction: 1983

Asking Price: \$599,000

Overview:

Welcome aboard the iconic C/V Enterprise, a seasoned masterpiece of nautical craftsmanship, poised for its next thrilling journey.

Highlights:

Dependability: Outfitted with dual 12V-71TI Detroit Diesel engines, the C/V Enterprise promises powerful performance and reliable operation, ensuring seamless travels for you and your guests.

Luxury: Featuring expansive cabins, contemporary amenities, and climate control systems, this yacht offers a plush and opulent setting for long-term charters.

Safety: USCG-approved safety measures, including inflatable life rafts, emergency beacons, and fire suppression systems, ensure the utmost safety and security for everyone on board.

Adaptability: Whether navigating coastal waters or the open sea, the C/V Enterprise is designed for diverse charter experiences, from fishing excursions to scenic tours.

Navigation: Cutting-edge electronics and navigation tools, such as radar, chartplotters, and VHF radios, guarantee accurate navigation and peace of mind throughout your voyage.

Commercial Viability: With its spacious design, robust mechanical systems, and USCG certification, the C/V Enterprise offers a prime opportunity for commercial charter operations, presenting a profitable venture for

experienced operators.

Specifications:

Type: Twin Oil Screw - Welded Aluminum Semi-Planing Hull

Navigated Waters: Pacific Coast and Inland Waters

Length: 54.2 ft

Beam: 17.0 ft

Gross Tons: 62

Depth: 6.5 ft

Draft: Approx. 6 ft

Net Tons: 50

Electronics:

Standard Horizon Matrix GX2000 DSC VHF Radio

Standard Horizon mH 3000 Loud Hailer with AIS

Garmin 8612 XSV Radar, Chartplotter, Sounder

Two Garmin 1243 Radar, Chartplotter, Sounder units

Cobra 29NW LTD CB Radio

Garmin 215 DSC VHF Radio with AIS

Sea 222 SSB Radio

Furuno 1503 SSB Radio and Globalstar G2 Satellite Phone (to be installed)

Personal computer with TimeZero Chartplotting Software

Navigation lighting

Mechanical Features:

Twin 12V-71TI Detroit Diesel Engines

Two-cycle turbocharged diesel engines with heat exchanged cooling and air start

Horsepower: 550 each at 1800 RPM

Twin Disc 5114 SC Transmission with 2.04 to 1 reduction ratio

Wagner 6" Steering Compass

Hydraulic Steering with two stations

Fuel Capacity: 750 gallons (aluminum tank)

Aluminum Sewage Waste Tank: 400 gallons

Hydraulic Oil Tank: 18 gallons

Aluminum Crab Davit and 12-crab block

Additional Features:

Inflatable life raft with SOLAS IBA Hammerlock Hydrostatic Release

ACR Category 1 406 MHz EPIRB

First Aid Kit

Offshore Flare Kit

Engine room manual ventilation closures

Emergency fuel shut-off

Fire suppression system with CO2 discharge

ABC Fire Extinguishers in various compartments

USCG Approved excursion safety railings

Various alarms for high water, low oil pressure, high coolant temp, etc.

Comfort and Convenience:

Microwave Oven (Emerson and Riva)

Chest Freezer (Black and Decker)

New Whirlpool Refrigerator/Freezer

Window-mounted Air Conditioner (Riva)

Rheem Cabin Heat and Air Conditioning unit

Spray foam insulation for noise suppression

Power and Electrical Systems:

Northern Lights M30C3F Auxiliary Engine

30-KW, 120/240-VAC Single Phase Generator

Banks of 72-VDC Marine Batteries

120/240-VAC Power System with main distribution panel

Emergency Battery Back-Up System in pilothouse

New Blue Seas AC/DC Electrical Panels

LED Lighting on pilothouse roof

Explore the opportunity to own this exceptional yacht, currently located for sale, and embark on your own maritime adventures.

SPECIFICATIONS

Basic Information

Category:
Motor yachts

Sub category:
Commercial Fishing Vessel

Model Year:
1983

Year Built:
1983

Country:
United States

Dimensions

LOA:
65' 0" (19.81 mm)

Min Draft:
16' 5" (5 mm)

Beam:
17

Max Draft:
19' 8" (19.685 mm)

Speed, Capacities and Weight

Cruise Speed:
12 Knots (13.81 MPH)

Cruise Speed Range:
0 Kts.

Max Speed:
15 Knots (17.26 MPH)

Max Speed Range:
0 Kts.

Gross Tonnage:
47 Pounds

Water Capacity:
500 Gallons.

Holding Tank:
0 Gallons

Fuel Capacity:
2000 Gallons

Accommodations

Total Cabins:

—

Total Berths:

—

Sleeps:

6

Total Heads:

2

Crew Cabin:

2

Crew Berths:

4

Crew Heads:

—

Hull and Deck Information

Hull Material:

Aluminum Yachts

Deck Material:

Aluminum

Hull Configuration:

Deep Vee

Hull Designer:

SWIFTSHIPS

Interior Designer:

N/A

Engine Information

Engines:

2

Manufacturer:

Detroit Diesel

Engine Type:

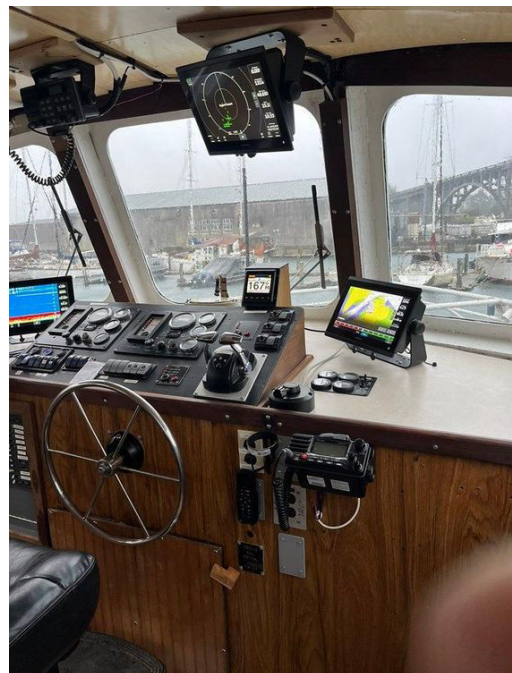
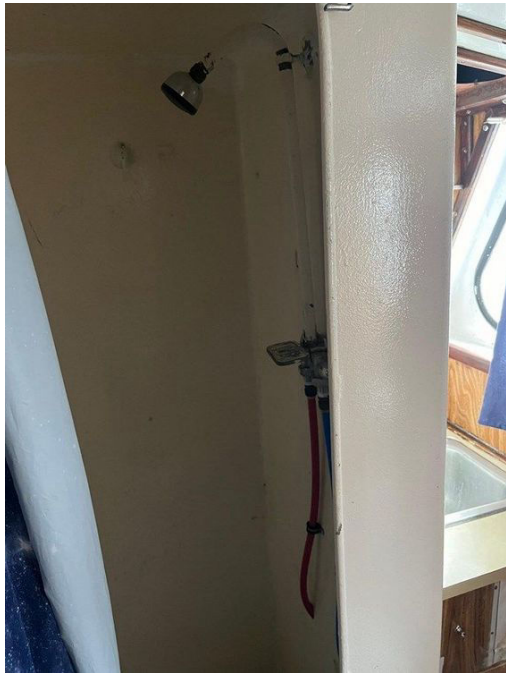
Inboard

Fuel Type:

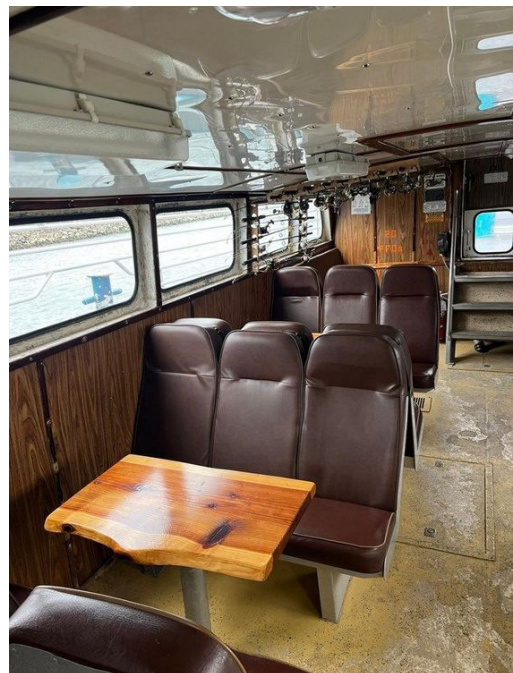
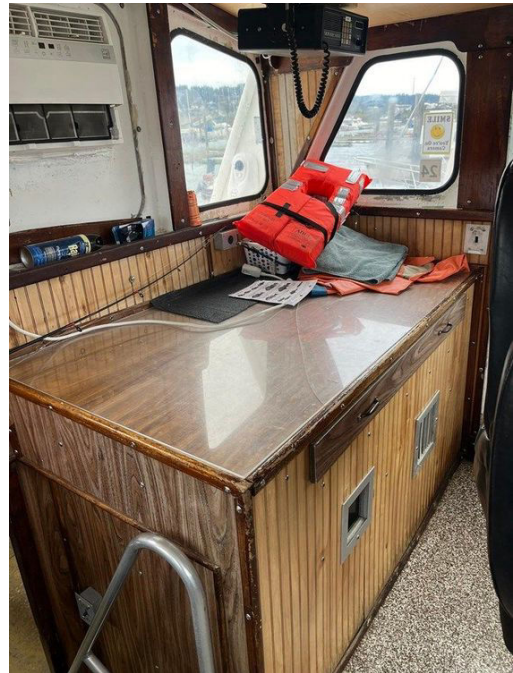
Diesel

GALLERY

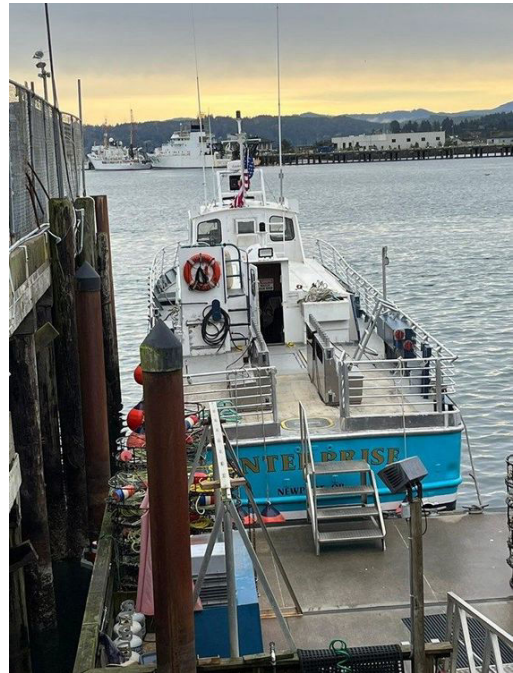


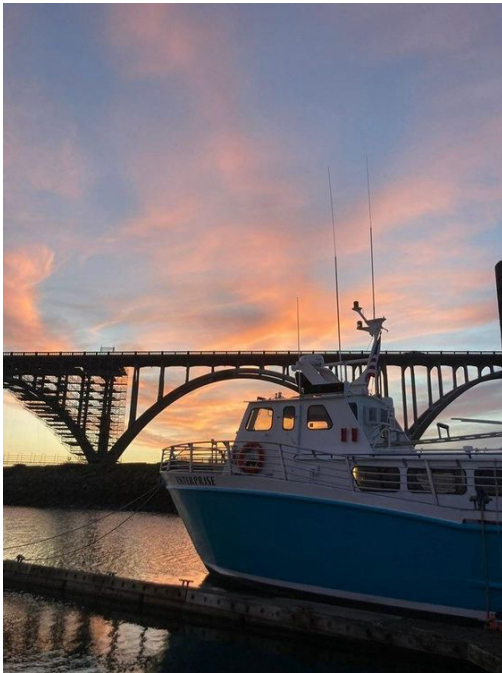














CONTACTS

Shestakov Yacht Sales is a brokerage company specializing in the sale and service of yachts worldwide. The company offers services for buying and selling both new and used motor yachts, sailing vessels, and luxury superyachts. They also provide yacht registration, insurance, technical maintenance, crew selection, and charter organization services across the U.S., Canada, Latin America, the Caribbean, and the Bahamas.

The founder and lead broker of the company is Andrey Shestakov, a licensed and certified expert with extensive experience in marine engineering and shipbuilding.

The company has an extensive network of partnerships with major yacht manufacturers worldwide and provides services in multiple languages, including Russian, Ukrainian, Spanish, and English. The office is in Dania Beach, Florida, USA.

For more information and to view available yachts, you can visit the company's official website: <https://shestakovyachtsales.com>

Contact details

Phone: +1(954)274-4435

Email: andrey@shestakovyachtsales.com

Address



Harbour Towne Marina, 850 NE 3rd St,
STE 213,
Dania, FL 33004