



SHESTAKOV

Yacht Sales

## LIQUID ASSET - AZIMUT YACHTS



**Builder:** [Azimut Yachts](#)

**LOA:** 66' 0" (20.12 m)

**Year Built:** 2020

**Beam:** 17' 0" (5.18 m)

**Model:** Flybridge

**Max Draft:** 17' 3" (5.25 m)

**Price:** \$1,700,000 USD Subject to change.

**Cruising Speed:** 28 Knots (32.22 MPH)

[See full listing on our website](#)

**Location:** Fort Lauderdale, United States

**Max Speed:** 32 Knots (36.83 MPH)

If you would like to buy a yacht **LIQUID ASSET - AZIMUT YACHTS** or would like help answering any questions concerning purchasing, selling, or chartering a yacht, please call **+1(954)274-4435** or click here on <https://shestakovyachtsales.com>

---

# TABLE OF CONTENTS

---

<b>OVERVIEW .....</b>	<b>3</b>
<b>SPECIFICATIONS .....</b>	<b>4</b>
Basic Information .....	4
Dimensions .....	4
Speed, Capacities and Weight .....	4
Accommodations .....	4
Hull and Deck Information .....	5
Engine Information .....	5
<b>GALLERY .....</b>	<b>6</b>
<b>DETAILED DESCRIPTION .....</b>	<b>12</b>
<b>CONTACTS .....</b>	<b>18</b>

## OVERVIEW

---

The 2020 Azimut 66 Flybridge, LIQUID ASSET, stands apart from other 66s as a meticulously maintained luxury motor yacht that marries graceful lines, robust performance, and thoughtful upgrades. Her expansive flybridge and a family-oriented layout that accommodates up to eight guests across four staterooms create an inviting atmosphere for both elegant entertaining and private relaxation. Fitted with a Seakeeper 16, she delivers exceptional stability at rest and underway for true bluewater-capable comfort, while a yacht controller makes close-quarters handling intuitive and confident. Additional assurance is provided by the Brunswick Passport Premier Warranty, valid through December 2026. Turnkey and ready for adventure, LIQUID ASSET arrives equipped with paddleboards, a wakeboard, a scurfboard and an inflatable island for effortless days on the water, and a recent 1,000-hour service has been completed to prepare her for the next voyage in style. The yacht is U.S. duty paid.

# SPECIFICATIONS

---

## Basic Information

---

**Model Year:**  
2020

**Country:**  
United States

**Year Built:**  
2020

## Dimensions

---

**LOA:**  
66' 0" (20.12 m)

**Max Draft:**  
17' 3" (5.25 m)

**Beam:**  
17' 0" (5.18 m)

## Speed, Capacities and Weight

---

**Cruise Speed:**  
28 Knots (32.22 MPH)

**Water Capacity:**  
264 Gallons

**Max Speed:**  
32 Knots (36.83 MPH)

**Fuel Capacity:**  
1030 Gallons

## Accommodations

---

**Total Heads:**  
3

## Hull and Deck Information

---

**Hull Material:**

Fiberglass and Plastic Yachts

**Hull Designer:**

N/A

**Deck Material:**

Fiberglass

**Interior Designer:**

N/A

**Hull Configuration:**

N/A

## Engine Information

---

**Engines:**

2

**Engine Type:**

Inboard

**Manufacturer:**

CAT

**Fuel Type:**

Diesel

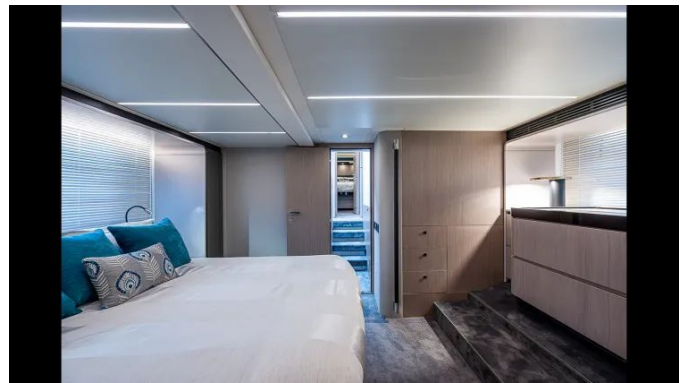
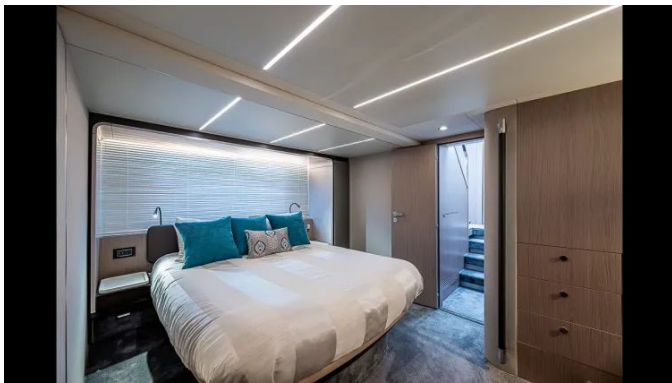
# GALLERY













---

# DETAILED DESCRIPTION

---

## Notable features

---

Protected by a Brunswick Passport Premier Warranty through December 2026, this yacht is offered turnkey and has been carefully refreshed to exacting standards. In November 2024 the bottom received a complete anti fouling renewal and repaint, and Propspeed was applied to the running gear, covering the propeller, shaft, rudder and platform; cutlass bearings and seals were replaced, the shafts were reconditioned and a full exterior wax was completed. That month also saw the installation of a new starboard starter, a new aft table and new exhaust scuppers, while the electrical system was upgraded with ten brand new AGM series batteries. Propulsion comes from twin Caterpillar C18 ACERT engines rated at 1,150 hp each, producing a top speed of up to 32 knots and a comfortable cruising speed of approximately 28 knots. Accommodation is thoughtfully arranged with four cabins and three heads plus a crew cabin with ensuite, onboard comfort is further enhanced by a Seakeeper stabilizer for exceptional calm at sea, and a hydraulic swim platform extends and refines your connection to the water.

## Technical details

---

Constructed by Azimut in 2020, this Flybridge measures 66' overall with a generous 17' beam and a maximum draft of 5'3", all laid on a streamlined fiberglass hull. Twin CAT 18 Acert diesel engines propel her with an assured 28-knot cruising pace and a top-end capability of 32 knots, while a Kohler 21 kW generator ensures dependable onboard electrical supply. Long-range outings are supported by a capacious 1,030-gallon fuel reserve, accompanied by 264 gallons of fresh water and an 80-gallon holding tank. The interior offers four staterooms and three heads, combining refined comfort with practical

livability.

## Cockpit

---

The cockpit is conceived as an elegant social retreat, anchored by a synthetic dining tabletop engineered to resist staining and enclosed by a U-shaped settee trimmed in water- and stain-resistant fabric with generous storage hidden beneath the cushions. Entertaining remains effortless with a well-appointed wetbar that includes a sink and refrigerator, while integrated speakers and overhead lighting set the mood from daylight into evening. Seamanship and everyday handling are assured by two capstans with foot pedals, dedicated house and engine battery shut-offs, and intuitive controls for the swim platform and passerelle. Sturdy stainless steel flybridge support poles and stainless steel safety gates emphasize the build quality, paired with clever storage beneath the flybridge stairs and a discreet shore power cable access that keeps lines tidy and the area uncluttered.

## Salon

---

Enter through three sliding stainless steel and tempered glass panel doors into a luminous salon framed by oversized windows that fill the interior with natural light. Brushed oak finished to a precise 10% gloss provides a contemporary foundation, enriched by gloss mahogany accents and elegant wood flooring panels underfoot. Thoughtful luxury meets functionality with LED backlit glassware storage, a dedicated AV cabinet, and concealed storage beneath the sofas that allows straightforward access to technical components. Entertainment is centered on a Hi-Low 55" TV positioned on the starboard side, while the dining table with U-shaped seating offers additional storage beneath and direct access to the technical space. A built-in central vacuum system ensures the area remains effortlessly immaculate.

## Galley

---

Meticulously crafted for culinary excellence, the galley is outfitted with a full-size refrigerator with a double freezer, a Miele four-burner induction oven and a Miele convection microwave to satisfy every cooking need. A double sink eases preparation and cleanup, while a sliding bar top smoothly converts the workspace into an elegant serving surface for guests. Abundant storage both above and below keeps provisions and cookware perfectly organized, and a dedicated wine fridge preserves vintages at optimal temperatures. Two swiveling bar stools provide comfortable seating for relaxed dining or intimate conversation.

## Helm

---

The command station is built around the Raymarine Platinum navigation package and bordered by two leather adjustable helm chairs that place every control within effortless reach. Precision maneuvering is delivered through bow and stern thruster control, a responsive joystick and a dedicated Yacht Controller for seamless, confident docking. Seakeeper 16 control enhances comfort underway while comprehensive engine monitors present vital data clearly and immediately. Long passages are simplified by an integrated autopilot, performance is refined with intuitive trim control, and thoughtful access to the breaker panel streamlines systems management.

## Lower foyer

---

The lower foyer is designed as a refined service hub, fitted with a conveniently located day head, a premium Miele washer paired with a matching Miele dryer for effortless onboard laundry care, and a central vac connection that streamlines housekeeping throughout the accommodations.

## Owner's stateroom

---

Occupying the full beam, the owner's stateroom is illuminated by abundant natural light pouring through frameless windows, with portholes to port and starboard adding cross-ventilation and character, and it includes a private ensuite head for complete comfort. A motorised high-low television rises at the press of a button and neatly retracts to preserve the panoramic view, while storage is generous and thoughtfully arranged: a full-height wardrobe, deep drawer units and concealed compartments beneath the berth provide ample capacity for personal effects and the provisions of extended cruising.

## VIP stateroom

---

The VIP stateroom benefits from exceptional volume created by the trapezoid bow, shaping a welcoming retreat that is awash with natural light. A sunroof with an integrated escape hatch, together with twin portholes to port and starboard, brings abundant daylight and refreshing ventilation into the space, while practical storage discreetly positioned beneath the bed keeps the cabin uncluttered. Full sized hanging closets offer ample wardrobe capacity and the addition of a private ensuite head completes this refined and comfortable sanctuary.

## Starboard guest stateroom

---

The starboard guest stateroom is a refined retreat featuring oversized twin beds positioned side by side with discreet storage tucked beneath, while a Jack and Jill door provides direct access to the shared day head; a television and a classic porthole complete the accommodation, offering both modern comfort and understated nautical elegance.

---

## Port guest stateroom

---

The port guest stateroom is luxuriously appointed with oversized twin bunk beds that deliver exceptional comfort, complemented by a full-height hanging closet providing generous wardrobe storage and a television for private onboard entertainment.

---

## Flybridge

---

From the flybridge's secondary helm you command the horizon, sheltered beneath a sculpted carbon-fiber hard top fitted with a retractable awning and fully enclosed in Isinglass. Forward, generous seating wraps around a versatile high-low table and is complemented by a dining table that comfortably serves ten guests. Aft, a gracious lounge and seating area with its own table offers a serene spot to relax. For seamless alfresco entertaining, the summer galley is equipped with a sink, electric grill, refrigerator and ice maker.

---

## Bow

---

The bow presents expansive forward sunbeds fitted with adjustable headrests and integrated cup holders, crafting an elegant retreat for relaxation. A generous U-shaped sofa, paired with an electrically operated sunshade bimini top, provides cool comfort at the touch of a button. Practical details are thoughtfully arranged, including an anchor locker with dedicated storage, a windlass featuring foot-pedal controls for effortless anchoring, and additional stowage discreetly concealed beneath the seating.

---

## Swim platform

---

The hydraulic swim platform accommodates a thirteen-foot tender or a

three-seater jet ski with graceful ease, transforming launching and recovery into a seamless, effortless ritual. Thoughtful integration grants direct access to the Seakeeper and a dedicated crew entry, simplifying servicing and daily operations while elevating the overall waterfront experience.

## Crew quarters

---

Arranged with an emphasis on both comfort and operational efficiency, the crew quarters include two twin beds and a thoughtfully fitted wet head, offering practical convenience and a tranquil retreat for the crew on every passage.

## Disclaimer

---

The particulars presented for this yacht are supplied in good faith; however, their accuracy cannot be assured and no warranty is provided regarding the vessel's condition. This yacht is offered for sale subject to prior sale, adjustment of price, or withdrawal from the market without notice. Furnished solely as a convenience to our clientele by the yacht broker, this information is not intended to constitute a formal representation of any specific yacht for sale.

# CONTACTS

---

Shestakov Yacht Sales is a brokerage company specializing in the sale and service of yachts worldwide. The company offers services for buying and selling both new and used motor yachts, sailing vessels, and luxury superyachts. They also provide yacht registration, insurance, technical maintenance, crew selection, and charter organization services across the U.S., Canada, Latin America, the Caribbean, and the Bahamas.

The founder and lead broker of the company is Andrey Shestakov, a licensed and certified expert with extensive experience in marine engineering and shipbuilding.

The company has an extensive network of partnerships with major yacht manufacturers worldwide and provides services in multiple languages, including Russian, Ukrainian, Spanish, and English. The office is in Dania Beach, Florida, USA.

For more information and to view available yachts, you can visit the company's official website: <https://shestakovyachtsales.com>

## Contact details

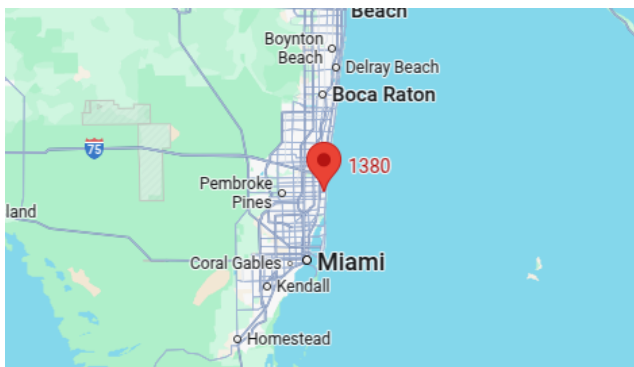
---

**Phone:** +1(954)274-4435

**Email:** [andrey@shestakovyachtsales.com](mailto:andrey@shestakovyachtsales.com)

## Address

---



1380 Weeping Willow Way, Hollywood,  
Florida 33019