

JESSEA - ASTONDOA



Builder: [Astondoa](#)

LOA: 66' 0" (20.22 m)

Year Built: 2022

Beam: 16' 0" (5.09 m)

Model: N/A

Min Draft: 16' 5" (5 m)

Price: \$2,099,500 USD Subject to change.

Max Draft: 16' 5" (5 m)

[See full listing on our website](#)

Location: Miami Beach, United States

Cruising Speed: 24 Knots (27.62 MPH)

Max Speed: 30 Knots (34.52 MPH)

TABLE OF CONTENTS

OVERVIEW	3
SPECIFICATIONS	4
Basic Information	4
Dimensions	4
Speed, Capacities and Weight	4
Accommodations	5
Hull and Deck Information	5
Engine Information	5
GALLERY	6
DETAILED DESCRIPTION	16
CONTACTS	18

OVERVIEW

JESSEA welcomes you aboard into a premier yachting sanctuary the moment you step on deck. Her sleek, modern silhouette complements a chef's galley fashioned for effortless entertaining. On the flybridge this luxury motor yacht offers a peaceful retreat with sumptuous seating, alfresco dining, a wet bar, grill, refrigerator and every refined convenience — an exemplary flybridge yacht for cruising and entertaining.

SPECIFICATIONS

Basic Information

Category:
Motor yachts

Year Built:
2022

Model Year:
2022

Country:
United States

Dimensions

LOA:
66' 0" (20.22 m)

Beam:
16' 0" (5.09 m)

Min Draft:
16' 5" (5 m)

Max Draft:
16' 5" (5 m)

Speed, Capacities and Weight

Cruise Speed:
24 Knots (27.62 MPH)

Water Capacity:
264 Gallons

Max Speed:
30 Knots (34.52 MPH)

Fuel Capacity:
897 Gallons

Gross Tonnage:
39 Pounds

Accommodations

Sleeps:

6

Crew Cabin:

1

Total Heads:

3

Crew Berths:

1

Hull and Deck Information

Hull Material:

Fiberglass and Plastic Yachts

Hull Designer:

Astondoa

Deck Material:

GRP

Interior Designer:

Astondoa

Hull Configuration:

N/A

Engine Information

Engines:

2

Engine Type:

Inboard

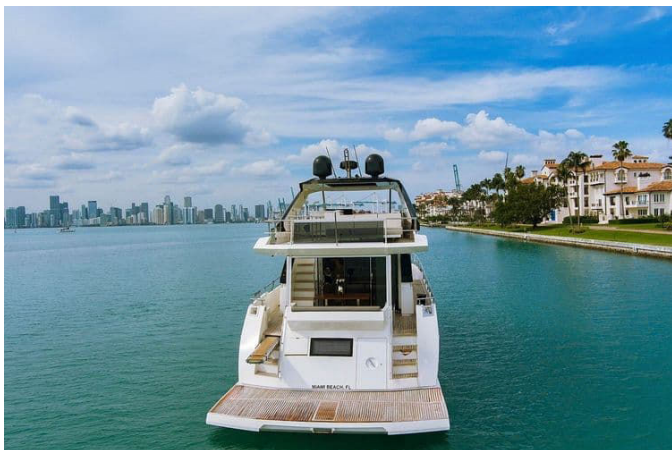
Manufacturer:

Volvo Penta

Fuel Type:

Diesel

GALLERY







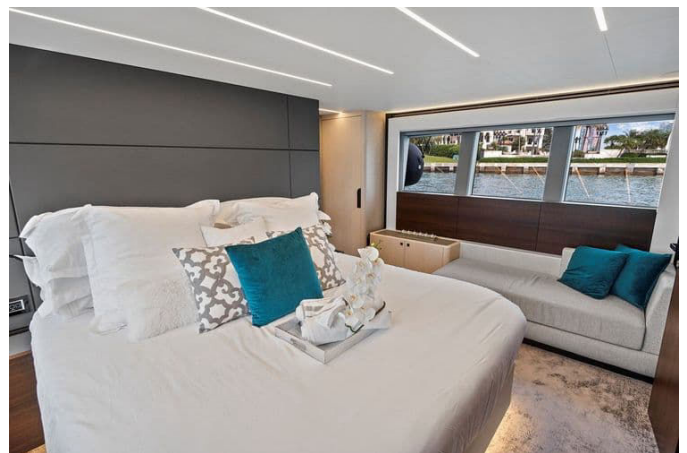


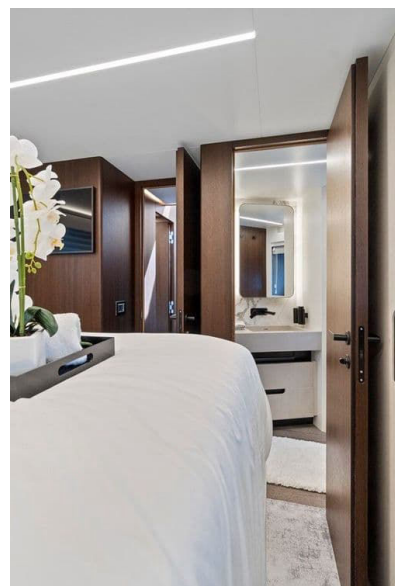












DETAILED DESCRIPTION

2022 Astondoa 66 Fly

From the moment you step aboard, this 2022 Astondoa 66 Fly delivers an exceptional yachting experience, where sleek, modern lines and thoughtful design create an atmosphere of effortless elegance. The main deck is conceived for entertaining with an impressive forward galley finished with hardwood floors that serves the open, airy salon and dining area with ease, while the flybridge becomes the ultimate sanctuary to relax and unwind, thoughtfully appointed with expansive seating and a full dining setting, a wet bar with BBQ, refrigerator, ice maker, and sink beneath a striking black hardtop, teak decking underfoot, and comprehensive LED lighting that makes every evening feel like an occasion. A covered aft deck welcomes guests with generous seating and a table, and wide glass doors dissolve the boundary between interior and exterior to sustain a continuous social flow, while the bow deck forward offers a private retreat with panoramic views, a table under a sun canopy, plush sun pads, and beautifully upholstered, weather-resistant seating set into a teak-clad foredeck. Below, a four-stateroom, three-head layout plus a dedicated crew cabin ensures comfort and privacy for up to eight guests, each stateroom finished to a high standard and appointed with premium bedding, ample closets, televisions, reading lights, and private en-suite baths, and on the main deck the salon, galley, and main helm station are thoughtfully integrated to enhance visibility, circulation, and convivial living. Built for both performance and luxury, this US-spec vessel is powered by MAN V8 1200 engines and steadied by a Seakeeper N9 gyro, delivering confident handling and exceptional comfort at sea, with low hours on the main engines underscoring its pristine condition and immediate readiness. An extensive suite of features and upgrades underscores the yacht's pedigree,

including duty paid status and a US-spec electrical system, bow and stern thrusters for precise close-quarters control, twin Garmin multi-display navigation screens at the main helm and twin at the flybridge helm complemented by Garmin chart plotter displays, a Garmin radar antenna, Garmin autopilot, and a Garmin VHF station, a pair of KVH 6 dummy domes, hydraulic trim tabs, a powerful searchlight, and a Glendinning Cablemaster for effortless shore power handling. Exterior craftsmanship shines with a teak aft cockpit, teak side decks, a teak flybridge, a teak swim platform, and a teak bow area with table, all accentuated by LED-lit bulwarks, an LED-lit flybridge floor, and four underwater lights, while access and comfort are enhanced by a hydraulic passerelle, a side boarding ladder, a dockside water inlet, window and windscreen covers, and a tropical air-conditioning package rated at 96,000 BTU. Entertainment and audio are elevated with a Yamaha sound system in the main salon, a JL Audio system on the flybridge, and a Fusion audio system serving the bow, and the interior is fitted for refined living with dimmers on all main saloon, aft cockpit, and stateroom lights, electric blinds in the main salon and owner's stateroom, a safe in the owner's stateroom, Calcutta marble in the owner's bath, and a collection of high-end appliances including a wine cooler, an extra freezer, a washer and dryer, a microwave/convection oven, a dishwasher, and InstaHot water in the galley. Visual entertainment is equally comprehensive with a 49" LCD TV in the main salon on a Hi-Lo system, a 40" LCD TV in the owner's suite, a 24" LCD TV in the twin guest stateroom, and a 19" LCD TV in the crew quarters, and the flybridge's black hardtop, teak flooring, and LED lighting complement a beach club on the swim platform with a large grill, perfect for afternoons at anchor that linger long after sunset. Schedule your private showing of this pristine yacht today; opportunities of this caliber never last long.

CONTACTS

Shestakov Yacht Sales is a brokerage company specializing in the sale and service of yachts worldwide. The company offers services for buying and selling both new and used motor yachts, sailing vessels, and luxury superyachts. They also provide yacht registration, insurance, technical maintenance, crew selection, and charter organization services across the U.S., Canada, Latin America, the Caribbean, and the Bahamas.

The founder and lead broker of the company is Andrey Shestakov, a licensed and certified expert with extensive experience in marine engineering and shipbuilding.

The company has an extensive network of partnerships with major yacht manufacturers worldwide and provides services in multiple languages, including Russian, Ukrainian, Spanish, and English. The office is in Dania Beach, Florida, USA.

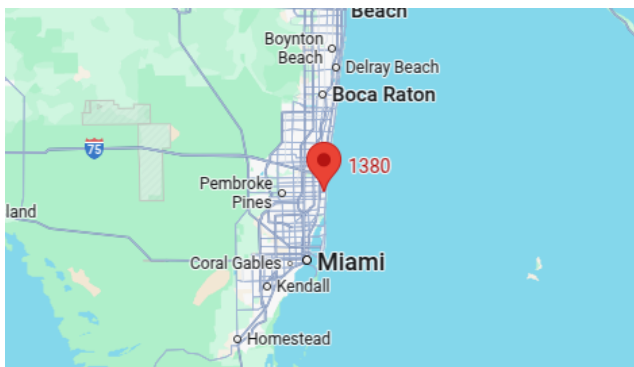
For more information and to view available yachts, you can visit the company's official website: <https://shestakovyachtsales.com>

Contact details

Phone: +1(954)274-4435

Email: andrey@shestakovyachtsales.com

Address



1380 Weeping Willow Way, Hollywood,
Florida 33019