

HOPE - FERRETTI YACHTS



Builder: [Ferretti Yachts](#)

Beam: 18' 0" (5.54 m)

Year Built: 2011

Max Draft: 17' 3" (5.25 m)

Model: N/A

Cruising Speed: 33 Knots (37.98 MPH)

Price: \$949,000 USD Subject to change.

[See full listing on our website](#)

Location: Miami, United States

LOA: 66' 0" (20.12 m)

TABLE OF CONTENTS

OVERVIEW	3
SPECIFICATIONS	4
Basic Information	4
Dimensions	4
Speed, Capacities and Weight	4
Accommodations	4
Hull and Deck Information	5
Engine Information	5
GALLERY	6
DETAILED DESCRIPTION	19
CONTACTS	26

OVERVIEW

New photos arriving soon.

A sweeping panoramic window in the owner's suite bathes the interior in light and expands the sense of space, allowing this 660 to read like a much larger Flybridge Motor Yacht. Graceful and adaptable, the flybridge and main-deck lounges are defined by elegant settees and a teak dining table seating up to eight, an arrangement that suits both leisurely family cruising and refined luxury yachting.

Step through the salon's thoughtfully balanced entry and the redesigned layout reveals itself as a single, sociable living area: an American-style galley facing the lounge that can be completely enclosed by a transparent sliding partition, while the helm opens directly onto the salon, creating effortless circulation ideal for a Motor Yacht family cruiser or a charter-ready Flybridge Yacht.

Below decks the VIP and guest cabins are neatly appointed and intelligently configured to maximize comfort and stowage. The full-beam owner's cabin is lifted by an expansive hull window with opening ports, inviting exceptional daylight and uninterrupted sea vistas. Performance remains at the core of the design: a Performance Yacht capable of speeds up to 33 knots, driven by twin 1,300 hp MAN common-rail engines — a surefooted, luxurious cruiser built for bluewater exploration.

SPECIFICATIONS

Basic Information

Category:
Motor yachts

Year Built:
2011

Sub category:
Motor Yacht

Country:
United States

Model Year:
2011

Dimensions

LOA:
66' 0" (20.12 m)

Max Draft:
17' 3" (5.25 m)

Beam:
18' 0" (5.54 m)

Speed, Capacities and Weight

Cruise Speed:
33 Knots (37.98 MPH)

Accommodations

Total Heads:
3

Hull and Deck Information

Hull Material:

Fiberglass and Plastic Yachts

Hull Designer:

N/A

Deck Material:

Fiberglass

Interior Designer:

N/A

Hull Configuration:

N/A

Engine Information

Engines:

2

Engine Type:

Inboard

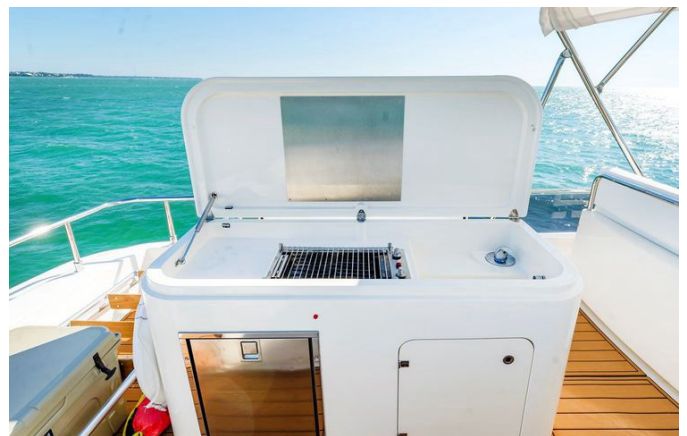
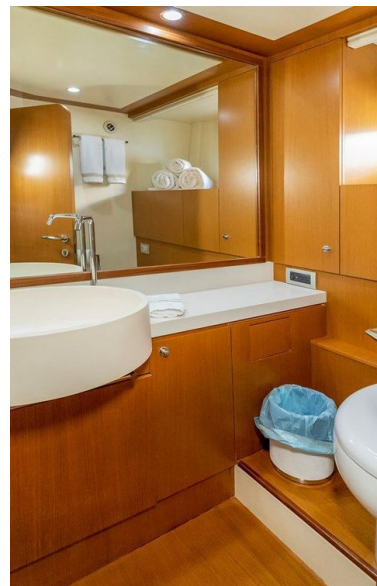
Manufacturer:

MAN

Fuel Type:

Diesel

GALLERY



























DETAILED DESCRIPTION

Upgrades

A comprehensive suite of upgrades elevates this yacht well beyond her class, beginning with a full cockpit enclosure and an aft docking control station that deliver confident close quarters handling and effortless maneuvering. Entertainment and ambience have been transformed by an abundance of JL Audio sound, new speakers and multiple new TVs including a new Intellian HD SAT TV, while navigation and situational awareness benefit from a complete Garmin electronics package paired with a Garmin xHD2 radar. Comfort has been carefully enhanced with new sea deck exterior flooring, new interior flooring, flybridge full covers, new bed mattresses, and new exterior cushions with new covers installed in 2021, creating a fresh and inviting onboard environment. Practical cruising refinements include a water maker, a new combination washer and dryer, bow and stern thrusters with a newly installed stern thruster, and four surveillance cameras for secure operation. Mechanical and house systems have been proactively refreshed: all four turbos have been completed, new injectors fitted on the port side engine, plus new batteries, new chillers, a new fresh water pump, a new AC water pump, and a new AC manifold — all carried out to ensure dependable performance and serene onboard living.

Main salon

Natural light pours through the aft sliding door and tilt window, both framed in stainless steel, onto new wood look floors that set a warm, contemporary tone and welcome guests into an elegant social space. Fresh upholstery dresses a gracious chaise lounge at the entrance, a convivial cocktail bar with a drawer cooler, and a generous C shaped sofa that invite relaxed gatherings

and refined entertaining. Entertainment is seamless with SAT reception for the TV, a hi fi system GS II with six loudspeakers and a motorized hi low Samsung TV, all managed by an integrated system featuring an Intellian SAT TV receiver and a Yamaha RX V385 AV receiver for effortless control. Forward of the pilothouse, an L shaped sofa accompanies a dining table with three chairs, while newly installed custom electric blinds tailor light and privacy at a touch; two salon cameras provide discreet security and digital air conditioning displays ensure effortless climate control for every occasion.

Galley

The galley is as elegant as it is functional, with an aft sliding door and tilt window in stainless frames that ensure airflow and natural connection to the cockpit while air conditioning maintains ideal comfort. Culinary capability is comprehensive with a BOSCH ceramic four burner cooktop, a MIELE microwave/oven complemented by a separate electric microwave/oven, and an externally ducted extractor fan at 240V to keep the air fresh while cooking. Cold storage is generous with an Isotherm fridge and freezer, and abundant organized storage is provided by a chest of drawers and overhead lockers, while a durable granite worktop with a stainless steel sink anchors the space for practical food preparation. Venetian blinds on the aft window deliver refined light control and privacy to suit every mood aboard.

Lower helm station & electronics

Command comes naturally at the air conditioned lower helm, newly outfitted with a full suite of Garmin electronics including GPSmap XSV, AutoPilot, depth sounder, and a Garmin GHS 10 VHF, all flanked by a precision compass to ensure confident navigation. Control is absolute with bow and stern thruster interfaces, electrohydraulic powered steering, and electronic engine clutch and

throttle for precise response under power. The MAN display consolidates vital boat data with speed and trip computer functions and trim tab indicators, while an ACR searchlight control stands ready for night passages and an instant battery parallel function adds redundancy for extended runs. A folding pilot seat with optional electric movement, the main electrical panel, and an electric side door complete a helm designed for effortless passages, with two windshield wipers with washers and a timer plus classic barometer, clock, and hygrometer enhancing visibility and situational awareness.

Main cabin

The full beam master located mid ship is a serene private retreat designed for two, centered on a comfortable double bed with mattress, pillows, and bedspread and flanked by bedside tables with drawers and a cabinet with shelves for refined storage. Daylight filters through two fixed windows and four opening stainless steel portholes with covers, illuminating new wood look flooring, a dressing table with chair and generous mirrors, and a chaise lounge with table that create private living and dressing zones. Custom electric blinds set the mood at a touch while reading lights and overhead speakers establish atmosphere, ventilation under the bed promotes freshness, and a walk in wardrobe with shelves and a safe keeps belongings perfectly ordered. A Samsung TV completes the suite for indulgent downtime and private entertainment.

Master bathroom

The en suite master bathroom is appointed with an electric ceramic WC supplied by fresh water and a separate bidet, and features a sealed teak floor underfoot that combines warmth with maritime practicality. A sleek washbasin is complemented by a WC control panel for convenient operation, while

overhead lockers and shelves provide thoughtful stowage for toiletries. A separate shower with a door and a stainless steel opening porthole deliver natural light, ventilation and privacy in equal measure, and a large mirror completes the refined presentation for a calm, luxurious morning routine.

VIP cabin and washroom

Positioned forward, the VIP cabin welcomes guests with a comfortable double bed complete with mattress, pillows, and bedspread, framed by two bookshelves, a double wardrobe with mirror, and low level side cabinets with shelves for orderly storage. New wood look flooring, reading lights, and two stainless steel opening portholes with covers create a calm, airy atmosphere, while ventilation under the bed maintains freshness during extended stays. An escape hatch with a sliding cover adds natural light and safety, and a Samsung TV ensures entertainment on demand for visiting guests.

VIP bathroom

The VIP bathroom mirrors the master's refinement with an electric ceramic WC supplied by fresh water and a separate bidet, and a sealed teak floor that balances style and durability. A washbasin is set on a Roman Stone countertop, with plentiful storage in overhead lockers and shelves for personal effects. A separate shower with a door enjoys its own satin finish stainless steel opening porthole while an additional opening stainless steel porthole brings in daylight, and a mirror plus a WC control panel with a gauge indicating three quarters and full complete this beautifully appointed space.

Guest cabin and washroom

The guest cabin offers two comfortable beds with mattresses, pillows, and

bedspreads, supported by a bedside table with a drawer, a wardrobe with an interior mirror, and ventilation beneath the berths to maintain a pleasant environment. Plissé curtains and reading lights create a tranquil atmosphere, while two stainless steel opening portholes with covers admit fresh air and daylight. The private guest bathroom continues the theme with an electric fresh water WC, a sealed teak floor, a washbasin, mirror, overhead lockers and shelves, and a separate shower with a door and a stainless steel opening porthole, while the companionway between cabins is fully carpeted and includes an additional wardrobe for convenient stowage.

Crew cabin

Thoughtfully arranged for practicality and comfort, the crew cabin sleeps two in two bunks with fully fitted carpet underfoot, plissé curtains, a reading light, a wardrobe with mirror, and a stainless steel opening porthole with covers. The private crew bathroom features an electric ceramic WC, a flexible shower, a washbasin, mirror, shelves and a locker, roll up curtains and two stainless steel opening portholes, one with a satin finish, ensuring privacy and functionality. A washing/drying machine and a separate head and shower arrangement afford the crew true independence for extended voyages and comfortable service.

Aft cockpit and platform

Life on deck centers around a welcoming aft seating area with two tables set over a new custom floor, all protected by a full cockpit enclosure when desired to create an intimate al fresco room. A Besenzoni hydraulic passerelle makes boarding effortless and elegant, while a Cablemaster keeps shore power neatly managed and ready for use. Practical touches include an aft docking control station for precision handling, JL Audio speakers for onboard entertainment,

an Isotherm icemaker, a surveillance camera, discreet access to the crew quarters, and a dedicated engine room hatch — all arranged for unhurried days at anchor and seamless evenings alongside the pier.

Flybridge

The flybridge invites open air living with a C shaped sofa and central fiberglass table, a forward movable seating module and tailored covers that protect every surface when not in use, creating a versatile sun and social deck. New flooring refreshes the deck underfoot while a well equipped wet bar with grill, sink and an Isotherm fridge keeps refreshments close at hand for effortless entertaining. A custom fiberglass radar arch installed in June 2018 crowns the area, complemented by a flagpole, railings, a sun lounge pad with plush sunbathing cushions, a new Fusion SiriusXM head unit and an abundance of JL Audio speakers to provide the perfect soundtrack to every voyage.

Flybridge helm station and electronics

From the upper helm navigation is intuitive and secure thanks to a Garmin GPSmap display, Garmin AutoPilot, Garmin xHD2 radar and Garmin depth sounder, complemented by a GHS20 VHF for clear communications. Control is immediate with bow and stern thruster interfaces, ACR searchlight control, electrohydraulic powered steering and a rudder angle indicator, while two helmsman seats and an instrument panel with electric opening provide comfort and convenient access for extended passages or close manoeuvring at anchor.

Engine room

Power is provided by twin 1300 HP MAN engines showing 1851 hours, delivering authoritative performance with the renowned efficiency and reliability of MAN engineering. Ship's electrical needs are supported by a Kohler 23 kW generator that ensures quiet, continuous power for all onboard systems whether underway or at anchor, and the refreshed mechanical systems and recent service history underline the yacht's preparedness for immediate cruising.

CONTACTS

Shestakov Yacht Sales is a brokerage company specializing in the sale and service of yachts worldwide. The company offers services for buying and selling both new and used motor yachts, sailing vessels, and luxury superyachts. They also provide yacht registration, insurance, technical maintenance, crew selection, and charter organization services across the U.S., Canada, Latin America, the Caribbean, and the Bahamas.

The founder and lead broker of the company is Andrey Shestakov, a licensed and certified expert with extensive experience in marine engineering and shipbuilding.

The company has an extensive network of partnerships with major yacht manufacturers worldwide and provides services in multiple languages, including Russian, Ukrainian, Spanish, and English. The office is in Dania Beach, Florida, USA.

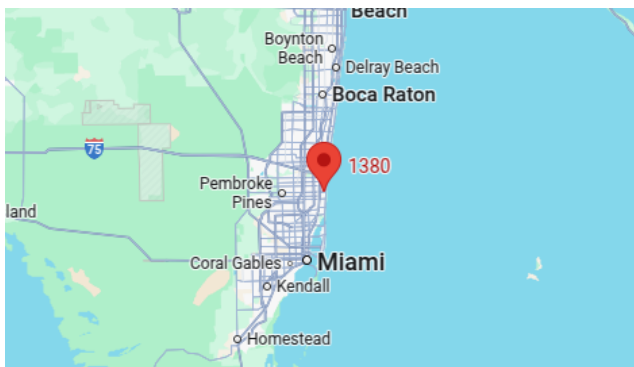
For more information and to view available yachts, you can visit the company's official website: <https://shestakovyachtsales.com>

Contact details

Phone: +1(954)274-4435

Email: andrey@shestakovyachtsales.com

Address



1380 Weeping Willow Way, Hollywood,
Florida 33019