



SHESTAKOV

Yacht Sales

GRAVITAS - SUNSEEKER



Builder: [Sunseeker](#)

LOA: 68' 0" (20.73 m)

Year Built: 2018

Beam: 16' 0" (5.08 m)

Model: Predator 68

Max Draft: 17' 0" (5.17 m)

Price: \$1,495,000 USD Subject to change.

Cruising Speed: 26 Knots (29.92 MPH)

[See full listing on our website](#)

Location: Newport, United States

Max Speed: 36 Knots (41.43 MPH)

If you would like to buy a yacht **GRAVITAS - SUNSEEKER** or would like help answering any questions concerning purchasing, selling, or chartering a yacht, please call **+1(954)274-4435** or click here on <https://shestakovyachtsales.com>

TABLE OF CONTENTS

OVERVIEW	3
SPECIFICATIONS	4
Basic Information	4
Dimensions	4
Speed, Capacities and Weight	4
Accommodations	4
Hull and Deck Information	5
Engine Information	5
GALLERY	6
DETAILED DESCRIPTION	17
CONTACTS	23

OVERVIEW

Available for viewing this Sunday, 6/28 from 12–2 PM at Newport Yachting Center (20 Commercial Wharf, Newport, RI). The Sunseeker Predator 68 is a refined sport yacht that pairs striking, contemporary lines with exhilarating express-cruiser performance, capable of reaching speeds up to 36 knots, and interiors that are both sophisticated and awash with natural light. Easy to present and fully prepared for a discerning new owner, she showcases a generous opening sunroof and frameless glazing that enhance the sense of openness, while a hydraulic swim platform and dedicated tender garage extend her versatility. Crafted to a high standard, the Predator 68 artfully melds indoor and outdoor spaces and delivers the speed, poise, and comfort tailored for effortless entertaining. Recent upkeep includes new exterior upholstery and a completed M1 engine service; she was recently hauled for fresh antifouling with PropSpeed applied and has had an oil change.

SPECIFICATIONS

Basic Information

Model Year:
2018

Country:
United States

Year Built:
2018

Dimensions

LOA:
68' 0" (20.73 m)

Max Draft:
17' 0" (5.17 m)

Beam:
16' 0" (5.08 m)

Speed, Capacities and Weight

Cruise Speed:
26 Knots (29.92 MPH)

Fuel Capacity:
925 Gallons

Max Speed:
36 Knots (41.43 MPH)

Accommodations

Total Heads:
3

Hull and Deck Information

Hull Material:

Fiberglass and Plastic Yachts

Hull Designer:

N/A

Deck Material:

Fiberglass

Interior Designer:

N/A

Hull Configuration:

N/A

Engine Information

Engines:

2

Engine Type:

Inboard

Manufacturer:

MAN

Fuel Type:

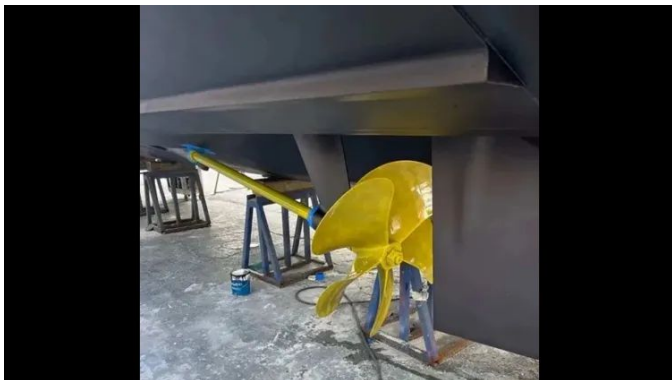
Diesel

GALLERY







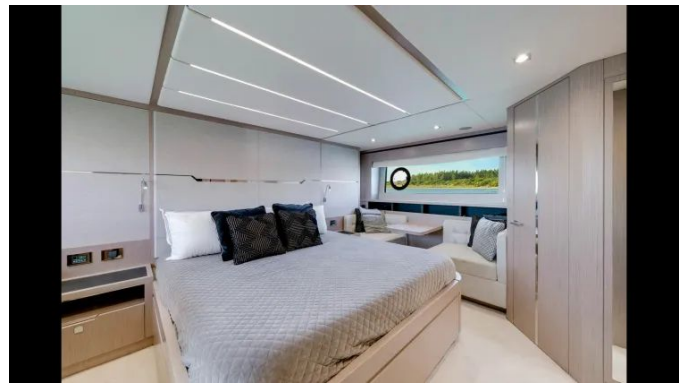


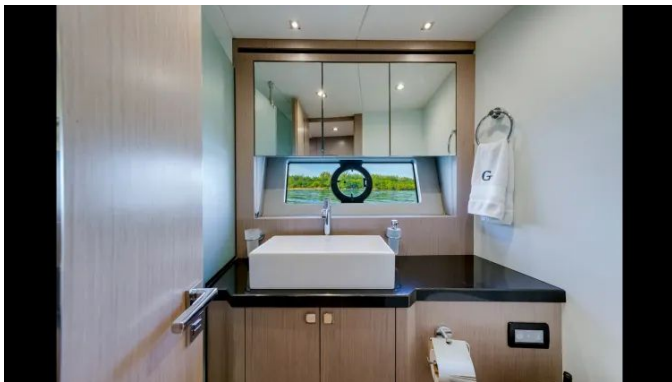
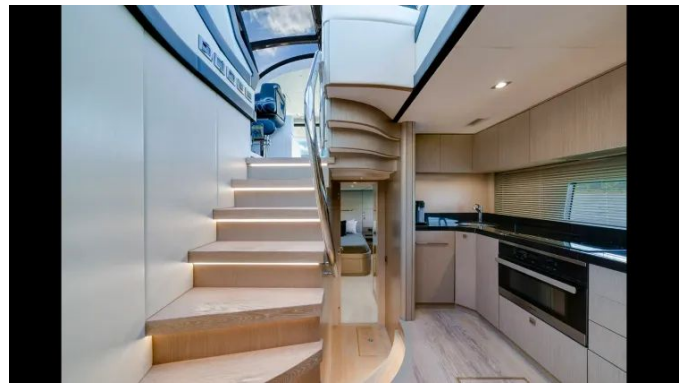














DETAILED DESCRIPTION

Hull and moulding

A pristine white hull is elegantly contrasted by a Jet Black boot top line, while a hydraulically operated lifting platform provides a maximum lift capacity of 450 kg for seamless waterside boarding. The boat is prepped for the future addition of a Water Maker, and the underwater ambience is softly illuminated by four white Lumishore LED lights. Below deck, a three-cabin layout with the galley set on the lower deck has been configured to maximize both space and comfort. Esthec Platinum decking with White corking is installed across the platform, aft cockpit steps, aft cockpit, aft cockpit grating and the steps leading to the foredeck sunpad, delivering a refined appearance with minimal upkeep.

Foredeck

Beneath a protective windscreen and a hardtop glass cover finished in black mesh, the foredeck combines shelter and shade with practical features such as a fresh water deck wash outlet for effortless rinsedowns. Ground tackle is substantial, with 60 Metres of Galvanised anchor chain matched to a Lewmar 40Kg Delta Anchor and handled by a Lewmar Anchor winch V5GD-24V to ensure surefooted anchoring. Comfort is provided by bow sunbathing cushions with folding back rests, while a dedicated foredeck entertainment zone houses Bose removable speakers driven through a Sonos Connect amplifier. After dusk, low level white LED side deck lights, eight per side, wash the walkways in a soft, refined glow.

Aft cockpit

The aft cockpit has been conceived for effortless relaxation and precise

control, beginning with an electric black canopy that glides out at the touch of a button to create an immediate shaded retreat and a finely finished teak table positioned before integrated aft cockpit speakers for ambient sound. Onboard entertaining is taken to another level with an electric ceramic Domino griddle, a Victrofrigo ice maker supplied by a dedicated water purifier and an insulated ice chest with Coolmatic refrigeration, while a handheld swimming shower and a folding stainless steel bathing ladder neatly stowed beneath a GRP lid invite easy access to the water. Docking and deck handling have the same attention to detail: an aft docking station houses a second Xenta Smart-stick alongside a multi-function panel and horn, Lewmar stern docking winches are installed port and starboard, a Glendinning Cablemaster is fitted and a fresh water marina connection pressure regulator is provided. Practical refinements include a fresh water deck-wash outlet, an additional pair of 12-inch oval mooring cleats mounted to the aft lower edge of the hull band facing aft, and a carbon fiber and polished stainless steel ensign staff in lieu of the standard, while a bespoke tender recovery roller system designed for the Williams 325 ensures launch and retrieval are as smooth as the voyage itself.

Saloon and dining

The saloon and dining areas are appointed in a satin Silver Oak finish with wide-plank oak flooring, centered around a bar console topped with glossy Nero Assolute granite. Luxurious Snow Leather seating throughout the saloon and dining space pairs with a gloss Wenge coffee table to establish an elegant entertaining environment. Climate control is provided by three 16,000 BTU air-conditioning units. Onboard entertainment features a Samsung 55-inch television alongside a Harmon Kardon Blu-ray/DVD/CD/FM radio, five surround speakers and an HK subwoofer, while a U-Line integrated wine cooler maintains vintages at the proper temperature. Overhead interior lighting is fitted with dimmer switches to set the perfect mood.

Navigation station

The helm exudes refined luxury, appointed with Nero leather seats adorned by contrasting silver diamond stitching, while the inner face of the sliding roof is clad in carbon fiber finished with a clear gloss lacquer and the console panels are rendered in a carbon-fiber effect for a contemporary, high-tech ambience. The navigation array is built around two 16-inch Simrad MO16-T touch displays, flanked by a pair of Simrad IS42 speed/depth instruments fed by a depth/speed/temperature transducer to ensure comprehensive situational data. Steering precision is delivered by the Simrad AC12 autopilot system with an IS42 pilot display and QS80 pilot keypad, with the Simrad GS25 GPS and OP50 controller providing additional navigation control. Long-range detection is entrusted to the Simrad Halo 4 pulse-compression radar paired with a 64 nm, four-foot open-array scanner, while voice and data communications rely on the Simrad RS90 VHF radio with DSC capability and a 2.4-meter whip antenna, complemented by a Simrad AIS module with GPS and a 2.4-meter AIS VHF antenna. Nighttime visibility is enhanced by a Sanshin Twin Beam searchlight, and close-quarters maneuvering is made effortless through the Xenta Smart-stick docking system together with bow and stern thrusters operated via proportional lever control.

Galley

Crafted for effortless entertaining, the galley pairs a sleek Nero Absolute granite worktop with wide-plank oak flooring to form an elegant and durable foundation for every culinary pursuit. Climate comfort is assured by a single 6,000 BTU air-conditioning unit, while chilled provisions are managed by a stainless-steel, dual-voltage Vitrifrigo refrigerator mounted above and two freezer drawers positioned beneath. Cooking is made simple with a three-ring ceramic hob supported by a Bosch hob extractor fan, and washing up is

discreetly handled by a Miele integrated slimline dishwasher. For added flexibility and enhanced culinary performance, a Miele compact combination fan oven has been fitted in lieu of the standard unit.

Owner stateroom

Clad in Silver Oak with a satin finish, the owner stateroom presents a quietly opulent retreat laid over carpets in Sensation Original Icing Sugar; a Dometic safe is discreetly concealed within the joinery, and a sumptuous sprung mattress promises restorative sleep while the climate is precisely maintained by air conditioning rated at 16,000 BTU. Entertainment is provided by a Samsung 32-inch television complemented by Harman Kardon and stereo flush speakers, and illumination is both considered and elegant, featuring square polished chrome-bezel overhead lighting on dimmer switches alongside a polished chrome flexible arm reading light. Generous storage is found in the walk-in wardrobe, and the master ensuite transforms everyday routines with Nero Absolute Granite gloss-finish flooring, a Tecma 2G toilet and Hansgrohe ensuite taps and accessories in polished chrome.

VIP forward stateroom

Finished in Silver Oak with Low Build Satin Finish, the VIP forward stateroom offers an atmosphere of understated luxury and tranquility. A sprung mattress ensures deep, restorative sleep while flexible-arm reading lights in Polished Chrome and dimmer switches for the overhead interior lighting let you sculpt the ambience to your preference. Climate comfort is provided by a single 12,000 BTU air conditioning unit. Entertainment comes from a Samsung 32" Television paired with a Harmon Kardon unit and Stereo flush mount speakers. The adjoining ensuite heightens the onboard experience with Nero Absolute Granite - Gloss Finish flooring, a Tecma 2g toilet, and Hansgrohe ensuite taps

and accessories in Polished Chrome.

Starboard guest cabin

Dressed in Silver Oak with a low-build satin finish, the starboard guest cabin is designed for calm and comfort, appointed with a sprung mattress and climate control delivered by a single 12,000 BTU air-conditioning unit. Entertainment is elegantly integrated with a Samsung 32-inch television linked to a Harmon Kardon unit and stereo flush-mount speakers, while overhead lighting is softened via dimmer switches and polished chrome reading lights on flexible arms provide targeted illumination. Completing the accommodation suite, the master ensuite is finished with Nero Absolute granite set against gloss-finish flooring and fitted with a Tecma 2g toilet alongside Hansgrohe taps and accessories in polished chrome.

Crew cabin

Thoughtfully laid out to balance comfort with functionality, the crew cabin is served by a single 6,000 BTU air-conditioning unit that maintains an ideal onboard climate. Laundry is handled effortlessly by a Splendide washer/dryer, and a Tecma 2G toilet offers dependable, high-quality sanitation. Overhead interior lighting is fitted with dimmer switches to set the desired atmosphere at any hour, while polished chrome reading lights on flexible arms provide precise, adjustable illumination exactly where it is needed.

Electrical and engine room

An entertainment inverter with a seamless transfer system enables the yacht's media suite to draw power directly from the DC batteries, guaranteeing uninterrupted enjoyment whether under way or at anchor. The tropical spec

air conditioning produces 110,000 BTU and is paired with a second shore power inlet for added flexibility, while a TV shore cable inlet connection socket is neatly located at the stern. Onboard safety is elevated by a six zone fire and bilge flood monitoring alarm system, and dependable electrical generation is supplied by an Onan 29 kW generator.

Disclaimer

The details supplied for this yacht are provided in good faith for informational purposes; however, their accuracy cannot be assured and no express or implied warranty is made regarding the vessel's condition. This offering may be sold prior to notice, have its price amended, or be withdrawn from the market at any time without prior notification. She is presented purely as a convenience by this yacht broker to its clients and is not intended to constitute a formal representation of any specific yacht for sale.

CONTACTS

Shestakov Yacht Sales is a brokerage company specializing in the sale and service of yachts worldwide. The company offers services for buying and selling both new and used motor yachts, sailing vessels, and luxury superyachts. They also provide yacht registration, insurance, technical maintenance, crew selection, and charter organization services across the U.S., Canada, Latin America, the Caribbean, and the Bahamas.

The founder and lead broker of the company is Andrey Shestakov, a licensed and certified expert with extensive experience in marine engineering and shipbuilding.

The company has an extensive network of partnerships with major yacht manufacturers worldwide and provides services in multiple languages, including Russian, Ukrainian, Spanish, and English. The office is in Dania Beach, Florida, USA.

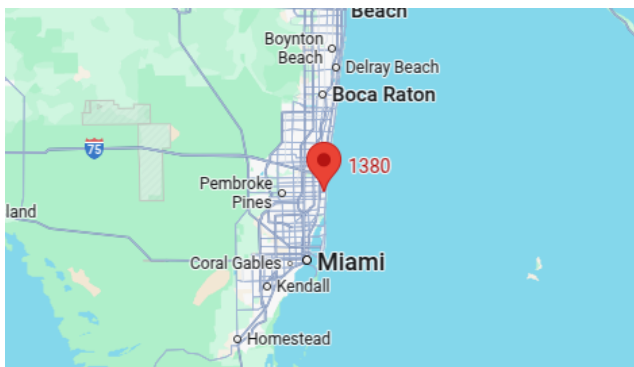
For more information and to view available yachts, you can visit the company's official website: <https://shestakovyachtsales.com>

Contact details

Phone: +1(954)274-4435

Email: andrey@shestakovyachtsales.com

Address



1380 Weeping Willow Way, Hollywood,
Florida 33019