

2003 HARGRAVE OPEN BRIDGE - HARGRAVE



Builder: [Hargrave](#)

Beam: 18' 0" (5.61 m)

Year Built: 2003

Max Draft: 16' 5" (5 m)

Model: Open Bridge

Cruising Speed: 14 Knots (16.11 MPH)

Price: \$675,000 USD Subject to change.

[See full listing on our website](#)

Location: Tampa, United States

LOA: 68' 0" (20.73 m)

TABLE OF CONTENTS

OVERVIEW	3
SPECIFICATIONS	4
Basic Information	4
Dimensions	4
Speed, Capacities and Weight	4
Accommodations	5
Hull and Deck Information	5
Engine Information	5
GALLERY	6
DETAILED DESCRIPTION	13
CONTACTS	19

OVERVIEW

The defining trait of this 68' Hargrave Motor Yacht is an open-plan main deck that affords unobstructed lines of sight from bow to stern and expansive panoramic views. A full-beam layout combined with seven feet of headroom throughout evokes the generous scale of a far larger luxury vessel. Within, the ambiance is elegant and welcoming, where sumptuous linens, gleaming granite surfaces, and satin-finished cherry joinery create a timeless palette of refinement. Equally arresting are the exterior living areas, conceived for effortless leisure and entertaining: alfresco meals on the aft deck or elevated dining on the Flybridge, both enhanced by integrated seating and generously proportioned tables. The Flybridge opens aft to a sun-drenched lounge, while abundant deck room stows a 14' RIB launched by a 1,600 lb hydraulic davit. An ideal Flybridge Motor Yacht for coastal cruising and charter-style luxury, she embodies comfort, style, and versatile seafaring grace.

SPECIFICATIONS

Basic Information

Category:
Motor yachts

Year Built:
2003

Sub category:
Motor Yacht

Country:
United States

Model Year:
2003

Dimensions

LOA:
68' 0" (20.73 m)

Max Draft:
16' 5" (5 m)

Beam:
18' 0" (5.61 m)

Speed, Capacities and Weight

Cruise Speed:
14 Knots (16.11 MPH)

Fuel Capacity:
1527 Gallons

Water Capacity:
280 Gallons

Accommodations

Total Heads:

3

Hull and Deck Information

Hull Material:

Fiberglass and Plastic Yachts

Hull Designer:

N/A

Deck Material:

Fiberglass

Interior Designer:

N/A

Hull Configuration:

N/A

Engine Information

Engines:

2

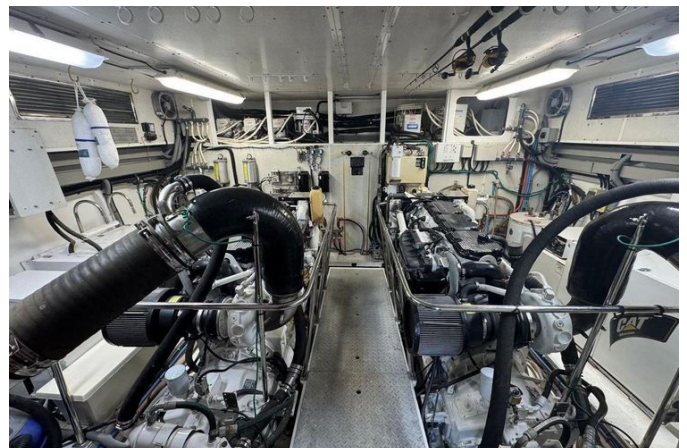
Fuel Type:

Diesel

Manufacturer:

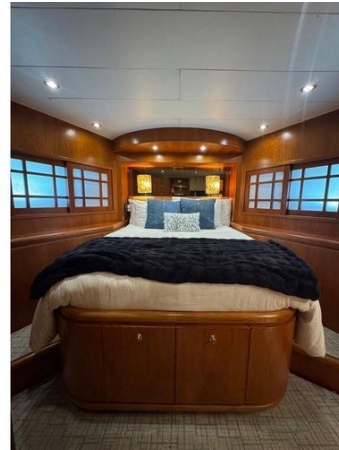
Caterpillar

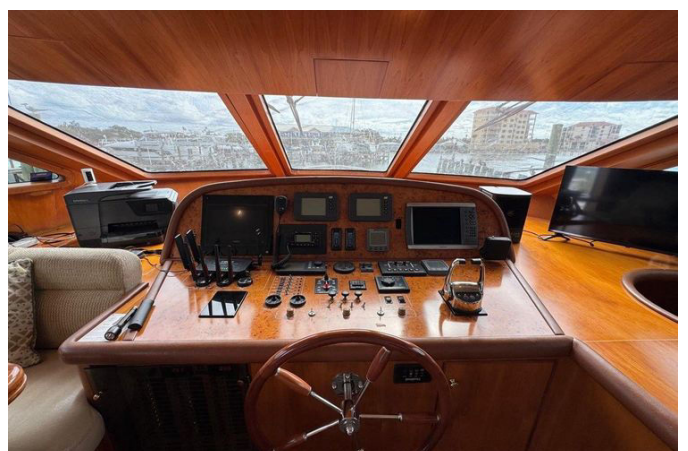
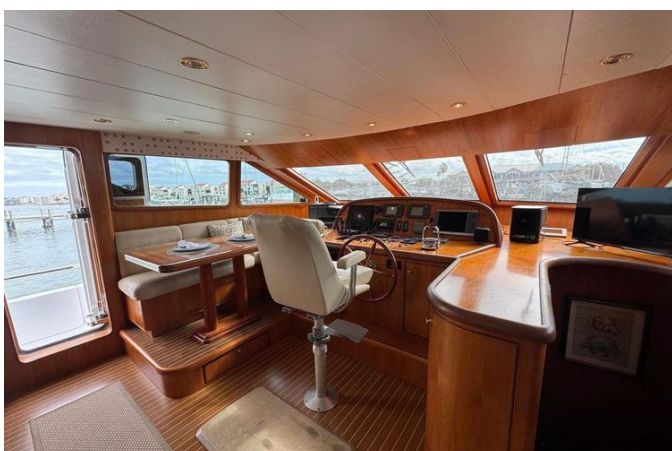
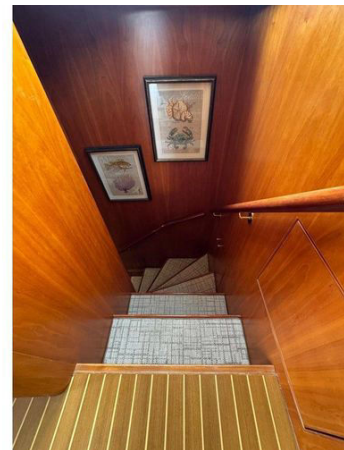
GALLERY















DETAILED DESCRIPTION

Description

The most striking feature of this sixty-eight Hargrave is the wonderfully open main-deck floor plan with a crystal-clear sight line from fore to aft, delivering uninterrupted, panoramic views and a sense of calm expansiveness throughout. A full-beam layout and approximately seven feet of headroom impart the feel of a much larger yacht, while interiors are richly finished with fine linens, granite countertops, and satin-finish cherry wood that bathes every space in warm sophistication. Outside, the yacht is equally generous and social: al fresco dining is a daily delight on either the aft deck or the flybridge, where built-in seating and large tables create natural stages for entertaining. The flybridge remains open to the stern, a sunlit sanctuary with room to lounge and space to carry a fourteen-foot tender, easily launched and retrieved by the 1,600 lb hydraulic lift. A comprehensive program of upgrades from late 2020 through early 2022—and continuing into 2023—brings “Showtime” sharply up to modern expectations. New Garmin electronics were installed at both helm stations; Naiad stabilizers were rebuilt; the flybridge received new isinglass; new carpeting was laid throughout and the Main Salon gained all-new furniture; and the 1,000-hour engine service was completed in January 2021. In May 2022, eight new engine mounts were fitted; new impellers were installed on the main engines with spares; struts and rudders were serviced, mounted, and balanced; new aftercoolers—cores, housings, seals, and gaskets—were installed; paint touch-ups were performed around the boat; the propellers were tuned and balanced; two new batteries were added; new mattresses were placed; a full bottom job with PropSpeed was completed; all running gear was serviced, including straightening of the shafts; and a new air handler was installed in the master stateroom. In 2023, a new

Dockmate yacht controller was added. Altogether, these and many other thoughtful improvements represent more than \$225,000 invested to ensure "Showtime" is presented in the best possible condition for her next owners.

Propulsion

Power comes from a matched pair of Caterpillar 3406 TA diesel engines, each rated at eight hundred hp and currently showing 2,945 hours, delivering the reliable, confident thrust this Hargrave deserves.

Specifications

She settles into an effortless fourteen-knot cruise, carried on a hull of hand-laid fiberglass. Length overall is sixty-eight feet with an 18.5-foot beam and a 5.08-foot maximum draft, combining interior volume with capable, comfortable seakeeping. Tankage is generous, with 1,527 gallons of fuel, 280 gallons of fresh water, and a 100-gallon holding tank, while accommodations comprise three guest cabins and three guest heads to welcome family and friends in complete comfort.

Other details

Life aboard begins in the Main Salon, where a 42" Samsung TV anchors a media center with a Sony five-disc CD player and a Sony surround sound receiver; newly installed sofa and chairs from 2021 settle into the sweeping views framed by large windows dressed in silky Roman shades with new valances. The 2021 carpeting underfoot complements the ambient LED glow and the subtle, indirect lighting tucked beneath the valances, creating a warm, contemporary lounge for conversation and cinema alike. Step aft to an inviting teak-decked terrace: the Aft Deck sets a teak table with five chairs and a wide,

cushioned bench, adds a Samsung TV for casual viewing, and cleverly houses storage for the Marquipt ladder, turning this shaded outdoor room into a favorite spot for every meal and every sunset. Forward, the Galley is an entertainer's ally, its cherry wood cabinetry and granite countertops arrayed with two barstools, a classic teak-and-holly sole, and abundant prep space. Serious culinary credentials include two under-counter Maxximum MAXBC52SD refrigerators (new in 2021), one under-counter freezer, an icemaker, two Dacor black warming ovens, a GE four-burner cooktop, a GE Profile dishwasher, a GE garbage disposal, and a GE Profile microwave convection oven, all enveloped by thoughtful storage throughout. The Wheelhouse balances command and comfort with a portside dinette for about three to four guests, a leather settee, and a high-gloss teak table opposite a large captain's chair. Navigation and control are precise and modern: a Raymarine depth display, all-new 2021 Garmin electronics networked seamlessly between Wheelhouse and Flybridge, two new 2021 ICOM VHF's with hailers, Naiad stabilizers, a Simrad autopilot, and Bennet trim tabs; twin side doors open directly to the walkaround decks, and a starboard stairway leads below to the owner's and guest staterooms. At the lower landing, the Foyer adds everyday practicality with a Bosh washer and dryer (new 2021), a coffee bar with granite countertops, and fresh carpeting from 2021. The Master Cabin is a sanctuary: a walk-around king berth flanked by two nightstands sits before a padded headboard and a dramatic mirrored backdrop; fine wood joinery with custom column detailing and Majilite upholstered walls elevate the atmosphere. Two large cedar-lined closets offer generous storage, with drawers and display counters beneath the portside porthole run and a vanity to starboard; entertainment comes via a 32" Samsung TV and a Sony five-disc CD player, and the scene is gently illuminated by indirect lighting under the valances over new 2021 carpeting. The ensuite Master Head features granite floors and counters, his-and-her sinks, a full-size shower with lacquered walls, abundant storage, and overhead cabinetry with a towel bar above the head.

The VIP Cabin offers a walk-around queen berth with a custom memory-foam mattress, a padded headboard, hanging closets to port and starboard, and the same soft, indirect lighting under the valances, complemented by new carpeting and a new A/C unit in 2021; its ensuite VIP Head mirrors the master's materials with granite floors and counters, a full-size shower, a granite shower seat, and lacquered shower walls. The Port Guest Cabin is thoughtfully arranged with twin beds for two guests, custom memory-foam mattresses, a mirror, port windows, a hanging closet, a Samsung TV, and new 2021 carpeting, all served by an ensuite head with granite floors and counters, a full-size shower, a granite seat, and lacquered walls. Aft of the engine room, the Crew Quarters accommodate two crew in over/under bunks and include a full head with a stall shower, a new 2021 A/C unit, and a 32" Samsung TV—privacy and practicality neatly wrapped into a hardworking retreat. Up top, the Flybridge is crowned by a custom fiberglass hardtop and flanked by port and starboard seating areas with two dining tables, a helm station with a dedicated helm chair, and companion benches to either side. Navigation is immediate and intuitive thanks to one Garmin 8416 16" chartplotter and one 12" Garmin chartplotter at the helm, while a Quicklift 1600 hydraulic davit with rotation stands ready to manage the tender. The helm is wrapped in new 2020 isinglass, and amenities include a new dock box and an FRP module housing a U-Line R29 refrigerator/ice maker with a stainless steel sink. The electronics and navigational suite is comprehensive: an ACR PCL 100D searchlight and CCTV at the aft deck; Simrad Autopilot 20 with RPU 80 on the upper helm and a second Simrad Autopilot 20 station at the lower helm; KVH TracVision 4 DVB; an Elbex EXC9/4 BW wide-angle fixed B&W camera for the engine room with Elbex pigtail connectors and an Elbex power supply; one ACR spotlight with upper and lower controls; two Garmin 8612 12" chartplotters and one Garmin 8416 16" chartplotter on the flybridge; new Icom 423 and new Icom M605 VHF radios with hailers; Garmin AIS transmit and receive integrated into the Garmin network; and a Garmin Fantom 54 radar. All plotters are networked between

Wheelhouse and Flybridge and connected to the engines for live data reporting. Mechanically, she is specified for confidence: a Naiad HPS 10HT 25 HP hydraulic bow thruster with a single reservoir and Naiad 254 stabilizers with 7.5-square-foot fins, fully rebuilt in 2021 with new pumps, hydraulics, and hoses; two Onan 27 kW generators showing approximately 3,044 hours to port and 3,053 hours to starboard; a Glendinning Cablemaster at the stern with a 100 Amp, 100-foot white shore cord; Racor 1000 FG fuel filters/water separators, two per engine; two 3/4" stainless-steel shafts and two five-blade Nibral propellers with dedicated storage for spare props in the crew area; hydraulic steering by Hynautic, easily adapted for autopilot; stainless-steel rudders; underwater exhaust with idle bypass; 12V lighting and 110V receptacles alongside 24V lighting and 220V receptacles; fluorescent lighting over the aft generator; and a Cruisair air conditioning/heating system. A 125-gallon holding tank for the heads includes an indicator at the helm, while a fresh-water fitting allows easy filling of the engine and generator expansion tanks; sound and heat insulation is doubled for quiet running. Plumbing and safety are equally thorough: four Sealand heads fed by a single pump, a Sealand macerator pump, two Rule sump pumps, two Seafire extinguisher systems with manual discharge (current), Tide Marine dripless shaft seals, Awlgrip paint in the engine room, an oil-change system for engines, gears, and generators, Hynautic twin throttle and clutch controls, two Jet Pack 110 water pumps, upgraded electrical outlets in 2021, and an EPIRB. The Electrical System is intelligently arranged with Vimar light switches throughout; eight 200 Ah batteries for engines and ship's power; two separate 120 Ah generator starting batteries; enclosed, acid-proof fiberglass battery boxes with covers; a main electric panel separating AC power control from the AC breaker board; 12V DC monitoring with a main DC breaker panel; 110V duplex receptacles throughout; indirect lighting under valances in salon and staterooms; and 24V DC monitoring with a main breaker panel. Control and protection are elevated by one set of Bennett 42" x 12" trim tabs with gauges, color-coded wiring for

easy tracing, a 100 Amp galvanic isolator, Dolphin battery charging—one 80 Amp unit plus two 30 Amp units—Dolphin AC/DC light transformers, an engine alarm system for low oil pressure and high temperature, four engine-room blowers, an ACR searchlight, and an electric windlass paired to a new Rocna 75 anchor, inspected and marked in 2021. Deck Equipment favors daily use: two lockers at the upper bow for storage; an FRP/AIM watertight door from the transom into the crew area; a stainless-steel sliding door from the aft deck; a heavy-duty 1/2" Lexan Venturi windshield with a Lexan access hatch to the bridge; teak on the aft deck and stairs down to the swim platform; four U-shaped stanchions at the platform; a Quicklift 1600 hydraulic davit with rotation; a built-in shower with hot and cold water above the swim platform; remote windlass operation from bridge and lower helm; and a swim ladder with teak steps. Structurally, she is overbuilt where it matters, with a V-shaped keel on longitudinal stringers; a fiberglass hand-laid molded hull; stringers reinforced with foam cores and bonded to the hull with multiple layers of glass cloth and resin; deck and superstructure featuring foam-cored reinforcement under fiberglass skins; and interior structural components—bulkheads and frames—fully bonded to the hull. The foam-cored sandwich deck construction offers strength underfoot, while non-skid decks, stainless-steel oval portholes, and stainless-steel 316 alloy handrail stanchions and fittings offer reassurance in every sea state. Safety rails encircle both main engines, and an emergency escape is provided by an aft-deck fiberglass hatch with a stainless-steel folding ladder. Disclaimer: The Company offers the details of this vessel in good faith but cannot guarantee or warrant the accuracy of this information nor warrant the condition of the vessel. A buyer should instruct his agents, or his surveyors, to investigate such details as the buyer desires validated. This vessel is offered subject to prior sale, price change, or withdrawal without notice.

CONTACTS

Shestakov Yacht Sales is a brokerage company specializing in the sale and service of yachts worldwide. The company offers services for buying and selling both new and used motor yachts, sailing vessels, and luxury superyachts. They also provide yacht registration, insurance, technical maintenance, crew selection, and charter organization services across the U.S., Canada, Latin America, the Caribbean, and the Bahamas.

The founder and lead broker of the company is Andrey Shestakov, a licensed and certified expert with extensive experience in marine engineering and shipbuilding.

The company has an extensive network of partnerships with major yacht manufacturers worldwide and provides services in multiple languages, including Russian, Ukrainian, Spanish, and English. The office is in Dania Beach, Florida, USA.

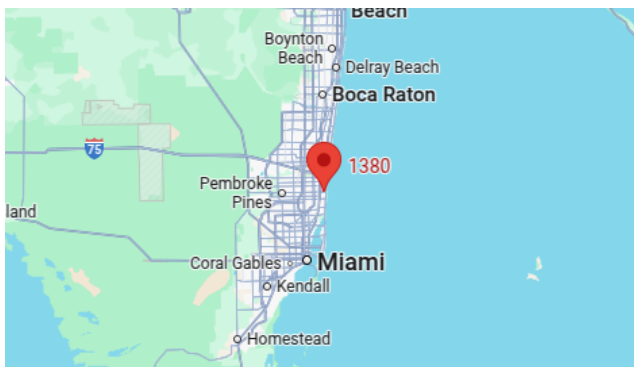
For more information and to view available yachts, you can visit the company's official website: <https://shestakovyachtsales.com>

Contact details

Phone: +1(954)274-4435

Email: andrey@shestakovyachtsales.com

Address



1380 Weeping Willow Way, Hollywood,
Florida 33019