

PRINCESS 70 (P70078) - PRINCESS



Builder: [PRINCESS](#)

Beam: 17' 0" (5.38 m)

Year Built: 2018

Max Draft: 5' 2" (1.58 m)

Model: PRINCESS 70

Price: \$3,132,868.77 USD Subject to change.

[See full listing on our website](#)

Location: Greve, Denmark

LOA: 69' 0" (21.25 m)

TABLE OF CONTENTS

OVERVIEW 3

SPECIFICATIONS 4

 Basic Information 4

 Dimensions 4

 Speed, Capacities and Weight 4

 Hull and Deck Information 5

 Engine Information 5

GALLERY 6

DETAILED DESCRIPTION 22

CONTACTS 26

OVERVIEW

Welcome aboard this exceptional Princess F70, now offered for sale. Delivered to a single Scandinavian owner and cherished since day one, she has benefited from exacting upkeep, including a heated indoor winter lay-up each season, resulting in a yacht presented in outstanding condition and ready to welcome her next custodian.

Specifically equipped to perform equally well cruising the Mediterranean or sailing the colder northern latitudes, she combines adaptable systems, luxurious comfort and true planing performance so you can enjoy everything from tranquil, sunlit afternoons at anchor to extended offshore passages in more testing conditions; in every regime she responds with composure and assurance.

The interior is finished in satin walnut, imparting a refined, contemporary warmth throughout the living spaces. Princess's renowned build quality and a thoughtfully considered layout create generous communal areas, lavish cabins and superb entertaining zones, whether in the saloon or up on the flybridge and down in the cockpit.

A rare chance to acquire a highly specified, privately owned Princess 70 with impeccable provenance. Further information and private viewings are available on request.

SPECIFICATIONS

Basic Information

Model Year:
2018

Country:
Denmark

Year Built:
2018

Dimensions

LOA:
69' 0" (21.25 m)

Max Draft:
5' 2" (1.58 m)

Beam:
17' 0" (5.38 m)

Speed, Capacities and Weight

Water Capacity:
240.13 Gallons

Fuel Capacity:
1083.1 Gallons

Hull and Deck Information

Hull Material:

Fiberglass and Plastic Yachts

Hull Designer:

N/A

Deck Material:

GRP

Interior Designer:

N/A

Hull Configuration:

Monohull

Engine Information

Engines:

2

Engine Type:

Inboard

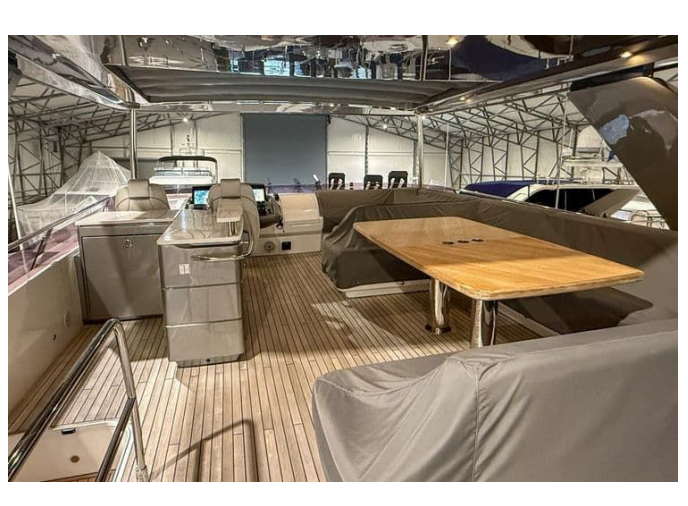
Manufacturer:

MAN

Fuel Type:

Diesel

GALLERY





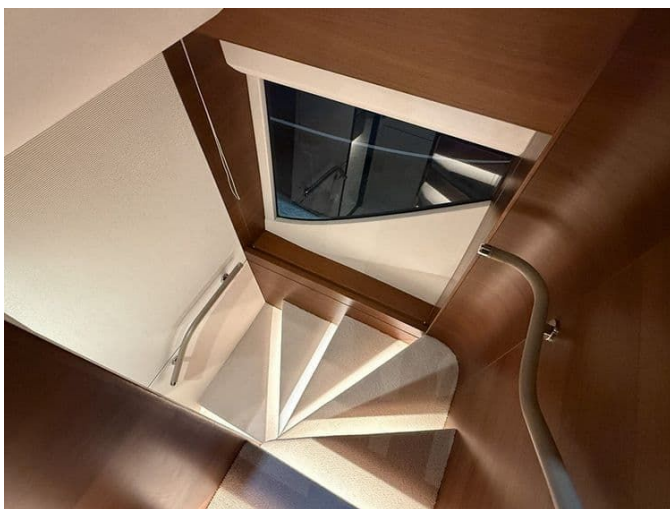


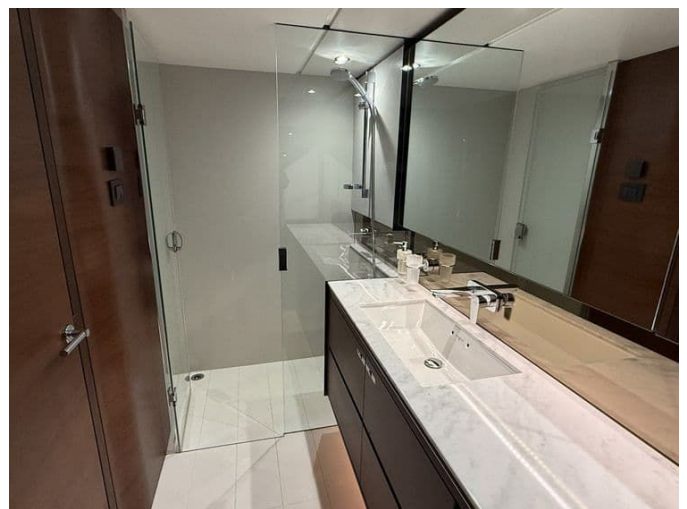


























DETAILED DESCRIPTION

Full specification

Command and control on deck have been elevated with a third station in the cockpit, where engine levers, thruster commands and an engine emergency stop are grouped for immediate access, while a Maximo yacht controller synchronises main engines, thrusters and windlass to make close-quarters handling intuitive and effortless. The boat's manoeuvrability is further enhanced by an advanced hydraulic package: SH240 variable speed hydraulic bow and stern thrusters, each rated at 240 KgF and specified in lieu of the standard 170 KgF electric bowthruster, are engine driven and offer dual station operation with a hold function docking mode; the stern thruster is mounted on an extension to improve its effectiveness. For seakeeping, the Sleipner Vector Fin stabilisation installation with VF800 fins operates under way from an engine driven hydraulic motor and at zero speed from a generator driven electric motor; because fin and thruster controls are unified at both stations, variable speed thrusters are recommended and a 19 kW generator is also advised to support the system.

The exterior hull is presented in a classic white with a dark blue waterline and black antifouling, while the hull and bathing platform fendering are finished in white with a stainless steel insert for refined protection. Inside, satin finished walnut enriches the interior, continuing as standard across the galley and helm floors, delivering warmth and understated luxury throughout the living spaces. Accommodation has been devised for privacy and adaptability. The aft cabin is laid out with two single berths, hanging lockers and opening portholes, and benefits from an en suite with an electric toilet, wash basin and a separate shower compartment, all lit by overhead LED fittings. Guest cabins to port and starboard each convert to double berths courtesy of powered sliding inboard

berths, allowing flexible use of the sleeping arrangements without compromising the suite like comfort expected aboard.

Allure styling with Hardtop creates an elevated aesthetic: interior helm seating features quilting with contrast piping and panelling to the lower helm seats, while the exterior continues the theme with quilted flybridge helm upholstery, matching contrast piping and panelling, upgraded teak step nosings and enhanced exterior lighting. The flybridge console pod and flybridge wetbar are both sprayed in metallic Oyster Grey, as is the hardtop (excludes hardtop); exterior upholstery is specified in Comfort Exterior II Met Ice with Met Taupe contrast panels and piping, and foredeck sunbed cushions are paired with adjustable teak headrests for refined lounging forward.

Deck equipment combines convenience with capability: a standard up/down electro hydraulic transom platform with a 550 Kg SWL accommodates tenders up to a recommended 430 Kg and is operated by a supplied remote, while the GRP flybridge hardtop incorporates an electric opening section in soft fabric with dimmable lighting. Timeless teak laid side decks and a foredeck walk through enhance movement around the boat, and a 3.5 m electro hydraulic telescopic passerelle with automatic handrails simplifies boarding. Practical deck fittings include electric stern rope winches, a stainless steel anchor with an additional 20 m of 10 mm chain bringing the total to 80 m, a high pressure deckwash and a searchlight, plus a teak coffee table for the foredeck seating area with a dedicated fixing point. Stainless steel keyway plates and a slider system have been fitted to allow later tender installation, and two deck chairs are supplied.

Electrical and hotel systems are generous and resilient: an ONAN 19 kW/50 Hz generator replaces the standard unit and is recommended when air conditioning and/or stabilisers are installed, with a second ONAN 19 kW/50 Hz generator added for capacity and redundancy. The electrical fit includes Continental 220/240 V sockets, stern docking lights mounted on the flybridge

overhang, underwater lighting to the transom and hull sides, and a Siemens induction BBQ stove on the flybridge. Comfort features include heated towel rails in the master and forward en suites, an LG combination washer/dryer, and an additional 50 litre drawer type drinks refrigerator installed in the aft galley counter. Freshwater autonomy is supplied by a SpotZero freshwater maker, and onboard energy is supported by lithium batteries with automatic control providing 30 kWh (new 2019/2021). Vessel awareness is assured by a comprehensive camera package covering port and starboard sides, stern, cockpit, saloon, flybridge, technical room and two engine room cameras, backed up by an alarm and passage system, while power conversion is handled by two Quattro 24/8000 inverters delivering 230 V.

Entertainment and connectivity reflect contemporary expectations: a Premium Audio System in the deck saloon comprises a Harman Kardon 5.1 Blu ray system with Bluetooth and KEF loudspeakers, with the flybridge audio networked to the saloon. A 28 inch LED TV graces the forward guest cabin alongside a Fusion MS AV755 Radio/DVD/MP3 unit with Bluetooth, and both port and starboard guest cabins are equipped with 22 inch LED TVs and Fusion MS AV755 units offering video playback and Bluetooth connectivity. Waterproof cockpit speakers with local control are integrated into the flybridge audio, and global broadband is enabled via Starlink Professional.

Navigation has been brought up to date with four Raymarine Axiom 19 brilliant colour multifunction displays—two at each helm—installed new in 2024, together with a Raymarine Cyclone radar featuring a six inch open array, also new in 2024, plus Vector GPS, AIS and VHF interfaces to complete the suite. Climate control is sized for all latitudes, with reverse cycle air conditioning and heating rated at 106,000 BTU and capable of operation up to ambient temperatures of 40°C, including bathroom outlets; the recommended 19 kW generator supplies sufficient capacity for gyro or fin stabilisers as well as the air conditioning system. The aft cabin benefits from its own condensing unit delivering 6,000 BTU with SMX control, while a Kabola KB45 Ecoline diesel

heater (new 2023) provides 24 kW across twelve zones for cooler climates and a 9 kW electric water heater supports onboard hot water needs.

Exterior upholstery selections combine durability and style: foredeck sunbed cushions with teak lifters are in Comfort Exterior II Metallic, cockpit seating is upholstered in Westbury Outdoor Linen Driftwood, and flybridge and foredeck seating and sunbeds are finished in Met Ice with Met Sterling; all exterior cushions are produced in reticulated foam. A foredeck carbon fibre sun awning in Anthracite Grey, flybridge cover in Grey Sunbrella Supreme, cockpit cover in Grey Sunbrella Plus and a privacy screen provide protection and discretion when required.

Additional thoughtful equipment includes a transfer pump between fuel tanks, a full eight place setting of china, cutlery and glasses, and a complete set of fenders and ropes to outfit the yacht for immediate use. The vessel's provenance is impeccable: a single Scandinavian private owner since new, never chartered, stored indoors each winter and accompanied by comprehensive maintenance records, the original Builder's Certificate and original Bill of Sales, and proof of EU VAT.

Planned winter maintenance for 2025/2026 comprises a full wax and polish, engine service, gearbox service, service to the generator used last season (the other generator was serviced last year and has not been used since), fresh antifouling and replacement anodes. These particulars are offered in good faith but cannot be guaranteed for accuracy nor do they constitute a warranty on the vessel's condition; prospective purchasers are strongly advised to engage their own surveyor to verify any item of specific interest. This vessel is offered subject to prior sale, price change or withdrawal without notice.

CONTACTS

Shestakov Yacht Sales is a brokerage company specializing in the sale and service of yachts worldwide. The company offers services for buying and selling both new and used motor yachts, sailing vessels, and luxury superyachts. They also provide yacht registration, insurance, technical maintenance, crew selection, and charter organization services across the U.S., Canada, Latin America, the Caribbean, and the Bahamas.

The founder and lead broker of the company is Andrey Shestakov, a licensed and certified expert with extensive experience in marine engineering and shipbuilding.

The company has an extensive network of partnerships with major yacht manufacturers worldwide and provides services in multiple languages, including Russian, Ukrainian, Spanish, and English. The office is in Dania Beach, Florida, USA.

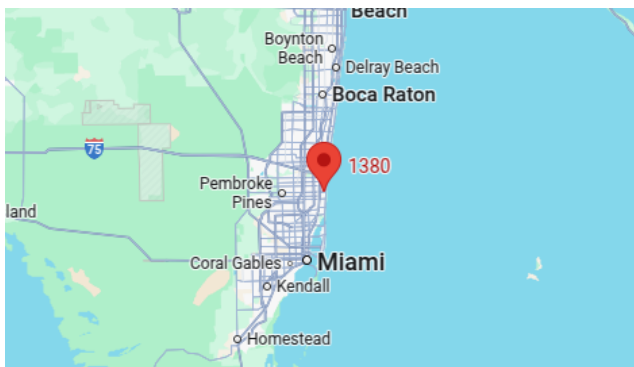
For more information and to view available yachts, you can visit the company's official website: <https://shestakovyachtsales.com>

Contact details

Phone: +1(954)274-4435

Email: andrey@shestakovyachtsales.com

Address



1380 Weeping Willow Way, Hollywood,
Florida 33019