



INDIGO - JOHNSON



Builder: [Johnson](#)

LOA: 70' 0" (21.46 m)

Year Built: 2024

Beam: 18' 0" (5.59 m)

Model: SKYLOUNGE

Min Draft: 17' 6" (5.33 m)

Price: \$3,595,000 USD Subject to change.

Max Draft: 17' 9" (5.42 m)

[See full listing on our website](#)

Location: Fort Lauderdale, United States

Cruising Speed: 21 Knots (24.17 MPH)

Max Speed: 24 Knots (27.62 MPH)

If you would like to buy a yacht **INDIGO - JOHNSON** or would like help answering any questions concerning purchasing, selling, or chartering a yacht, please call **+1(954)274-4435** or click here on <https://shestakovyachtsales.com>

TABLE OF CONTENTS

OVERVIEW 3

SPECIFICATIONS 4

 Basic Information 4

 Dimensions 4

 Speed, Capacities and Weight 4

 Accommodations 5

 Hull and Deck Information 5

 Engine Information 5

GALLERY 6

DETAILED DESCRIPTION 22

CONTACTS 36

OVERVIEW

PRICE REDUCED TO \$3,595,000

INDIGO introduces the reimagined Johnson 70—an evolution of the 65—now enhanced with an aft crew cabin and a hydraulic tender/swim platform that broaden both utility and comfort. At 70 feet, this luxury motor yacht accommodates four staterooms, three heads, and a private aft crew suite, delivering the scale and conveniences typically found on larger craft. Designed for serene on-anchor comfort, the yacht features “at rest” stabilization and powerful hydraulic bow and stern thrusters, while systems-level comforts include a sewage treatment system, a watermaker, and a comprehensive Garmin electronics suite. As a flybridge cruising yacht, she marries bluewater capability with refined styling, representing a rare value in her class. A full five-year CAT engine warranty reinforces confidence in her pedigree, and U.S. duty was paid at original import—no additional tariffs.

SPECIFICATIONS

Basic Information

Category: Motor yachts	Year Built: 2024
Model Year: 2024	Country: United States

Dimensions

LOA: 70' 0" (21.46 m)	Beam: 18' 0" (5.59 m)
Min Draft: 17' 6" (5.33 m)	Max Draft: 17' 9" (5.42 m)

Speed, Capacities and Weight

Cruise Speed: 21 Knots (24.17 MPH)	Water Capacity: 260 Gallons
Max Speed: 24 Knots (27.62 MPH)	Fuel Capacity: 1096 Gallons
Gross Tonnage: 48 Pounds	

Accommodations

Total Heads:

4

Crew Berths:

1

Crew Cabin:

1

Hull and Deck Information

Hull Material:

Fiberglass and Plastic Yachts

Hull Designer:

Dixon Yacht Design

Deck Material:

Fiberglass

Interior Designer:

Design Unlimited, England

Hull Configuration:

Semi-Displacement

Engine Information

Engines:

2

Engine Type:

Inboard

Manufacturer:

Caterpillar

Fuel Type:

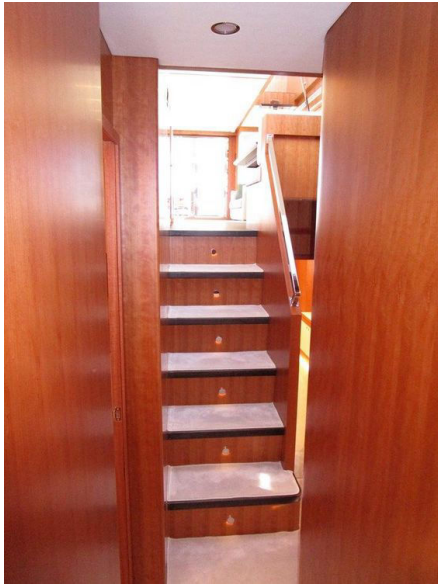
Diesel

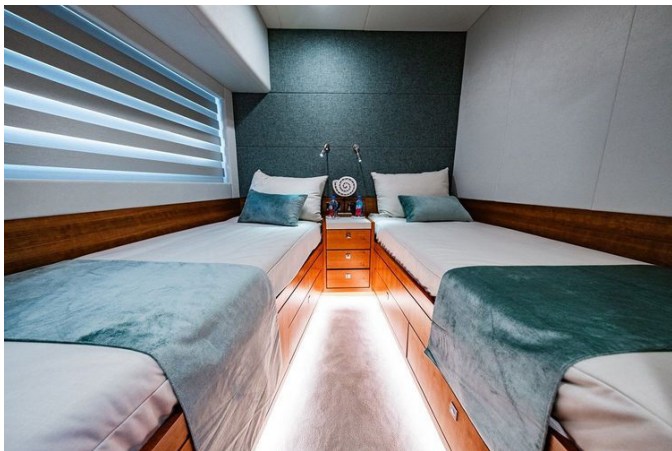
GALLERY

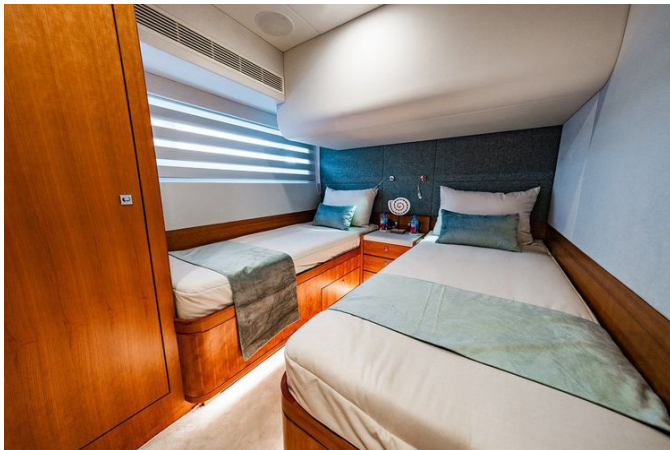


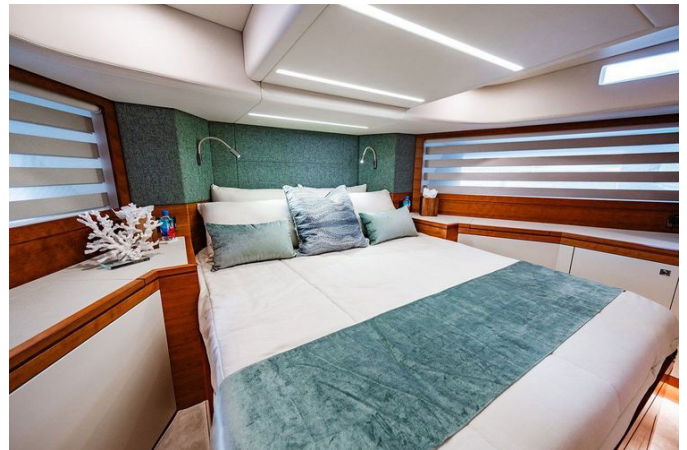








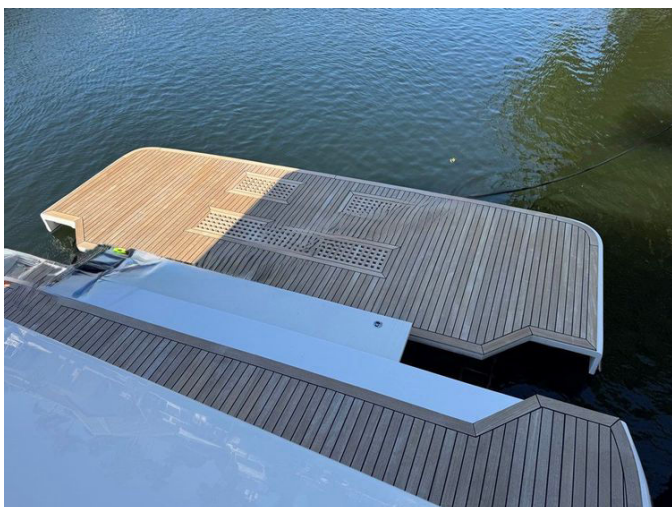


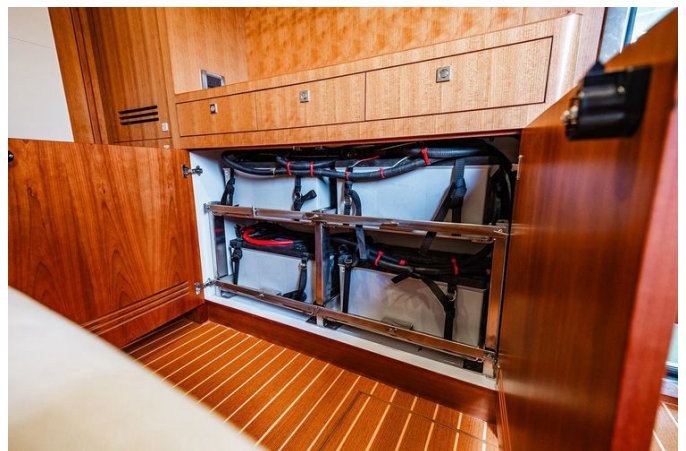


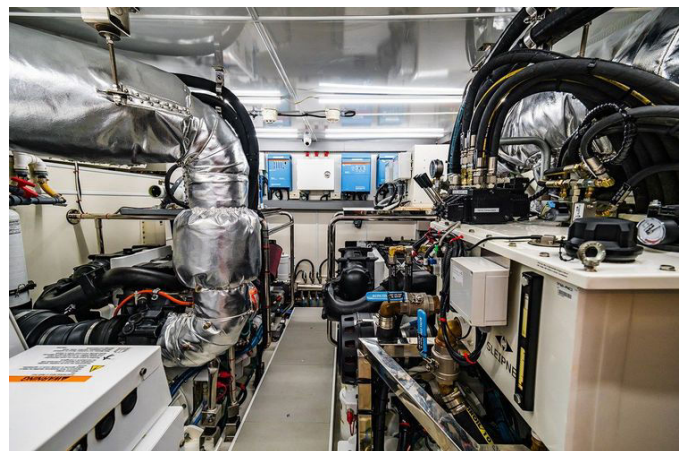
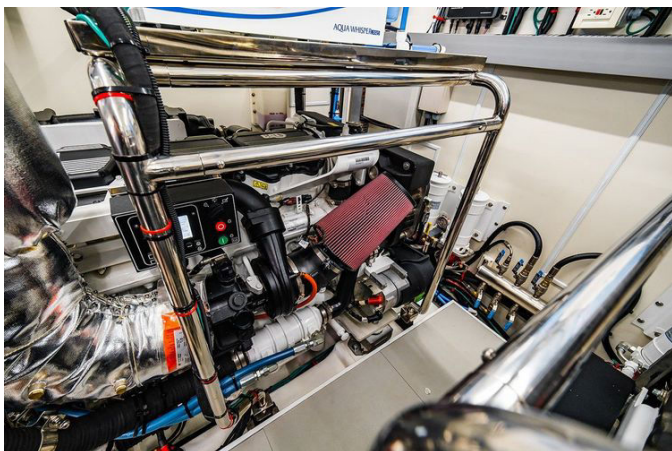


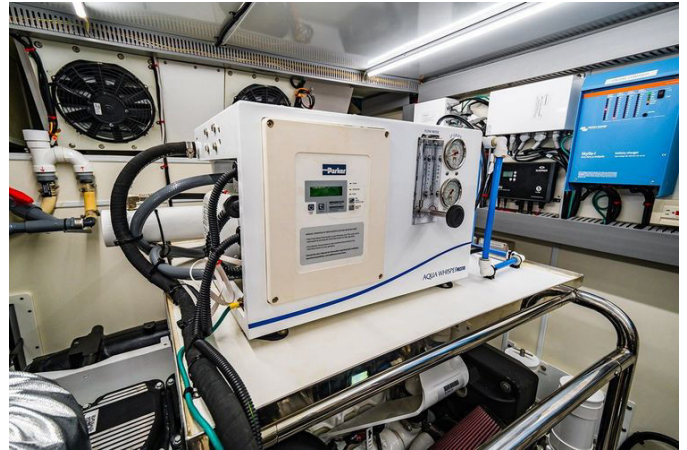








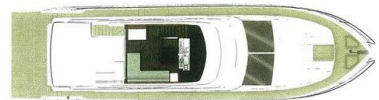




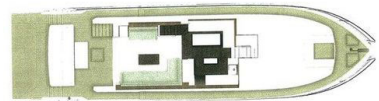




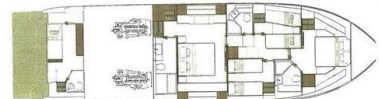
UPPER DECK



MAIN DECK



LOWER DECK



DETAILED DESCRIPTION

Walkthrough

Boarding from a floating dock is effortless onto the wide hydraulic swim platform, and the aft deck welcomes you with a fixed bench seat and a dining table fully protected beneath the bridge deck overhang. A sliding door ushers you into the salon, where a generous L-shaped settee to starboard is balanced by a more intimate loveseat to port. Just forward to starboard, the galley anchors the social heart with a compact serving island set near the centerline, while to port a dining table provides fixed seating for five. On the centerline, a staircase descends to the four guest cabins: aft, the full-beam master indulges with a king-size berth, with its head and hanging locker located directly aft of the berth. Moving forward from the master, a twin cabin lies to starboard where the two berths can be slid together as desired, while opposite to port a guest head serves a second twin cabin fitted with fixed bunks. Furthest forward, the VIP cabin features a walk-around queen berth and a private head. Above, the skylounge invites with interior stairs, a full helm, an L-shaped settee, and a sliding door that opens to the bridge deck aft, offering aft-facing seating, stairs to the sundeck, and ample space for portable chaise lounges.

Salon

With no bulkheads on the main deck, the salon greets you with a sweeping, open volume as you enter from the aft deck. The salon entry itself features a single hinged door panel to port, while the other two panels open outward on starboard-side hinges, allowing the entire bulkhead to disappear when weather invites. Immediately to port, a CZone touch panel precedes a two-drawer end table; farther forward, an upholstered two-person settee hides storage below and faces a pop-up 55" Samsung QLED 4K TV. Continuing

forward, a cherry cabinet integrates a Denon AV receiver and a subwoofer, while above, eight open tread walnut stairs rise to the sky lounge. To starboard, an upholstered L shaped settee seats five to six in comfort with storage beneath. Expansive side windows dressed with OceanAir blinds bathe the space in natural light, while overhead four LED light bars, five KEF stereo speakers, and a composition of high gloss and upholstered ceiling panels complete the refined ambience. Full length air conditioning vents to port and starboard deliver cool air evenly throughout the room.

Dining salon

Open to the salon and immediately forward to port, the dining area features a generous L shaped settee outboard with fixed seating for five and discreet storage beneath the upholstered cushions. A substantial cultured stone Quartz table on twin pedestals anchors the space, while side and forward windows pour in natural light. Overhead, two dimmable LED light bars shape the perfect mood from daybreak breakfasts to starlit dinners.

Galley

Spanning the beam and open to conversation, the C shaped galley is organized around a compact center island, marrying culinary performance with elegant finishes. Underfoot lies a walnut sole that complements Caesarstone Quartz counters framing a deep stainless steel sink with a removable spray faucet. Premium appliances include a Fisher & Paykel drawer type dishwasher, an Isotherm four shelf stainless steel freezer concealed behind a cherry door, and an Isotherm stainless steel refrigerator likewise hidden behind cherry joinery. A Fisher & Paykel stainless steel convection microwave with work light and exhaust fan pairs with a Fisher & Paykel four burner glass top cooktop for effortless preparation. Storage is

abundant, with eight cherry cabinet doors, five cherry drawers, open end shelving aft, and a cherry island fitted with two cabinet doors and open fiddled shelving. Practical touches include house water pump controls, side windows dressed with OceanAir blinds, 110 volt outlets with USB connections, and a port side top loading hinged storage locker. Safety and illumination are assured by a smoke/fire alarm, overhead LED light bars, six overhead round LED fixtures spanning the galley and dining area, and tasteful LED accent lighting below the cabinetry.

Accommodation companionway

On the centerline at the top of the stair from the galley, the yacht's main electrical panel is immediately at hand. Descending six softly lit steps brings you to the principal accommodations: to starboard, the starboard twin cabin; to port, the port side twin bed cabin; and forward, the private VIP ensuite cabin. Aft and down one additional step lies the shared guest head, while farther aft and two steps down is the entrance to the master cabin. Along the passage, behind a cherry door, are a separate Splendide washer and a Splendide dryer, with an auxiliary electrical panel mounted above. The steps and sole are carpeted for quiet comfort, and overhead three LED fixtures illuminate the corridor.

Master cabin

Entered from the forward end, the full beam master suite centers a king size berth set slightly off center to starboard against the aft bulkhead. Four drawers reside beneath the berth, with abundant additional storage revealed by lifting the gas assist bedframe. Each side of the bed is flanked by a Caesarstone Quartz topped nightstand, while upholstered panels above integrate sconce lights and gooseneck reading lamps. Along the starboard side

stand four two shelf storage cabinets and the enclosure for one of the two air handlers serving this area. Above, two additional cabinets, each with three shelves, frame a large hull side window centered by an opening stainless steel porthole. Forward, a cherry bulkhead presents a niche for a Samsung 4K QLED 43" TV. To port, three two shelf lockers, a dedicated A/C handler locker, and a hinged top vanity with auto lighting mirror the starboard convenience, with leather covering the flat surfaces for a tactile finish. Here too, a large hull window and an opening stainless steel porthole sit between two three shelf cabinets. Farther aft stands a three quarter height hanging locker with three drawers below, followed by a full height hanging locker with access to the port side stabilizer fin. Entertainment is elevated by five channel KEF speakers, a Denon AV receiver, and a subwoofer. The entrance to the master head lies to port behind the berth. Overhead, three dimmable LED light bars and four round LED fixtures set the mood, while accent LED strips illuminate beneath the berth and side cabinets at the toe kick. The sole is carpeted, and climate is precisely managed via digital A/C controls.

Master head

Situated directly behind the master berth and spanning nearly the full beam, the master head is a study in serene luxury. The vanity features a Villeroy + Boch above counter sink set atop Caesarstone Quartz, with two cabinets and two drawers below, and three mirrored door medicine cabinets above, each offering three shelves. Inboard, a full size Tecma toilet sits before a Caesarstone bulkhead, while outboard the quartz continues to form a generous shower enclosed by a clear glass door and sidelight, complete with a seat covering the starboard side stabilizer fin. Within the shower, a fiddled recess keeps toiletries secure, a hull side window and opening stainless steel porthole admit fresh air, and both an exhaust fan and dedicated light serve a

hand held or wall mountable shower fixture. The sole matches in Caesarstone Quartz, with three overhead LED lights, LED strip lighting at the toe kick, an A/C vent, and a smoke/fire detector completing the space.

Port side guest cabin

Accessed from the aft end and stepping forward, this cozy retreat features two single bunks set one step up. The inboard berth conceals two drawers beneath, while the outboard berth offers one drawer. Between them, a leather topped nightstand houses a cabinet for the Fusion stereo with two drawers below. Each berth benefits from a gooseneck reading light. Outboard, a generous hull side window and two opening portholes dressed with OceanAir shades draw in sea breezes, and above, two eight inch KEF stereo speakers deliver crisp sound. A 32" Samsung 4K QLED TV faces the inboard berth at the foot, while an auto lit hanging locker serves the outboard berth. Overhead, three LED lights complement LED step lighting beneath the berths, and the space is finished with a carpeted sole, digital A/C controls, and a smoke/fire detector.

Starboard side guest cabin

Entered from the forward end, this cabin offers two single berths divided by a two drawer, leather topped cherry nightstand with a hinged cabinet for the Fusion stereo. Each berth includes a gooseneck reading light. Above the outboard berth, a large hull side window and two opening stainless steel portholes frame the view, with one storage drawer below the outboard berth and abundant under mattress storage beneath the inboard berth. A 32" Samsung 4K QLED TV is mounted on the forward bulkhead. Overhead, three LED lights join a smoke/fire detector and two eight inch KEF stereo speakers, while LED strip lights run beneath the berths and the sole is carpeted for

comfort.

Guest head

The port side guest head opens from the centerline companionway, its Caesarstone sole echoing the matching countertop. The vanity provides a cabinet below and an under mount Kohler sink above, with a mirrored medicine cabinet overhead. Outboard, a round opening stainless steel porthole sits behind a shade. LED strip lights illuminate above the sink and at the toe kick, while the overhead integrates two LED fixtures and an A/C vent. The lacquer walled stall shower features a Caesarstone sole, a two door glass entry, and a hand held wall mountable fixture. A full size Tecma toilet completes this refined, functional space.

VIP stateroom

All the way forward, the private VIP sanctuary showcases a centerline queen berth with two drawers at the foot and full storage below accessed via gas assist shocks. Built in nightstands port and starboard flow into aft continuing cabinetry with small, hinged top storage cubbies. To port, a storage cabinet below houses a Fusion stereo head, while above a large hull side window and round opening porthole are dressed with OceanAir blinds; just aft sits a full size cherry hanging locker with auto light. The aft bulkhead is upholstered and set with a Samsung 32" 4K QLED TV. To starboard, the same hull side window and porthole pair with a two shelf cherry storage locker, below which a storage cabinet and a dedicated cabinet for the area's air handler provide practical utility; just aft is the entrance to the ensuite head. The cabin further features two eight inch KEF stereo speakers, light bars over the bed, five round LED fixtures, reading lights at the headboard, digital A/C controls, LED strip lighting around the perimeter, and

electric outlets with USB charge ports.

VIP head

Aft to starboard, the VIP head features a Caesarstone sole that matches the countertop and backsplash. The L shaped vanity provides two cabinets and one drawer below, while a Villeroy & Boch china sink is mounted above the counter with two mirrored medicine cabinet doors overhead. Outboard, an opening stainless steel porthole sits behind OceanAir shades. Above are two LED lights and an exhaust fan, and the high gloss lacquered walls gleam. A full size Tecma toilet accompanies a stall shower with a two piece glass door, a Caesarstone sole, its own light and exhaust fan, and a hand held or wall mountable shower fixture.

70 Johnson skylounge

Remarkably, the skylounge is accessible from both the yacht's interior and exterior, with open tread stairs rising from the salon below and a sliding door granting entry from the bridge deck aft. Here, an inviting starboard L shaped settee seats four around a small movable coffee table, while to port a Caesarstone topped cabinet conceals two matching 2.3 cubic foot Isotherm stainless steel drink fridges, a Fusion stereo head, a head unit, and storage within two cherry cabinet doors. Aft, a four panel, stainless trimmed glass door opens to the bridge deck aft, with the port side panel sliding inboard for access. Forward, a centerline helm stands before a glass enclosure encasing the salon stairs, while to starboard a Caesarstone topped end table offers additional stowage. The sole is clear walnut, the large side windows are dressed with OceanAir blinds, and the aft doors draw closed behind curtains. Climate and entertainment are assured with digital A/C controls, two nine inch KEF speakers, a 32" pop up Samsung 4K QLED TV, cool white LED accent

lighting, six round LED ceiling lights, and overhead LED light bars. Commanding it all, the centered helm chair is an electrically operated Opacmare seat clad in black leather. The helm suite is comprehensive: two Garmin 17" multi function displays; Glendinning electronic engine controls; SidePower integrated bow and stern thruster controls; SidePower at rest stabilizer controls; a Garmin AIS 600 Class B transceiver; a Garmin GHC 50 autopilot head; a Garmin GMI 20 four inch multifunction display; a Garmin Fantom 72 mile open array radar; a Garmin GSD 25 black box network sounder; Speich wiper controls for dual wipers; a VDO rudder angle indicator; two eight inch color CAT engine displays; a Maxwell AA 560 windlass control with chain counter; a Garmin G2O remote for the MFDs; key start/stop switches; five remote battery switches; six bilge pump switches with indicator lights; three sump switches with indicator lights; a Garmin VHF 210 marine radio; back up steering controls; an engine control switch and a back up engine control switch; an eighteen inch leather wrapped steering wheel; a stainless steel cupholder; a twelve inch CZone touchscreen control; an ACR URP 102 point pad searchlight control; main engine stop buttons; a five inch magnetic compass; a SeaFire detection panel with ten zones; and a huge crawl space under the helm.

Bridge aft deck

Partially shaded and purpose built for relaxation, the bridge deck aft features non skid decking underfoot and safe movement via stairs with a railing down to the aft deck, all enclosed by full perimeter railings. To starboard, aft facing L shaped seating hides storage below, complemented by a flagstaff holder. A six step folding ladder rises to the coach roof and stows in a dedicated compartment when not in use. Practicalities include deck drains, a hinged glass cover over the steps to the aft deck, and low level deck lights for ambience and safety. Three new chaise lounges await long afternoons in the sun.

Bow

Forward, teak over fiberglass decking sets a timeless tone, while a Maxwell vertical hydraulic RC 12 12 windlass with chain gypsy works in concert with up and down foot switches. The stainless steel anchor chute with roller carries a 120 lb Aritex stainless steel plow anchor connected to 250 feet of 3/8 inch galvanized chain. Both fresh and salt water washdowns stand ready, alongside a windlass remote plug in and above deck cleats to port and starboard. A 2.25 inch oval handrail with a secondary rail below ensures confidence, while a molded bow seat and a small sunbed just aft—both with removable cushions and covers—invite relaxation. Two pop up Quick deck ambient lights illuminate the bow seat, and two anchor locker hatches simplify handling. Low level LED courtesy lighting graces the bow and side decks. A Black Textilene windshield cover, new in 2026, joins dual spring line cleats, two stainless steel windshield wipers, frameless house side windows with medium dark tint, and four blue LED side deck overhead lights on each side, all crowned by international navigation lights and convenient side entry gates.

Aft deck

Elegantly appointed with teak over fiberglass decking, the aft deck is properly equipped for seamless docking and gracious entertaining. Twin raised stern cleats pair with two Maxwell 24 volt warping windlasses with deck switches, while oval stainless steel handrails ensure secure movement. Built in seating for five with removable cushions and a protective cover wraps a varnished wood table on a height adjustable, in and out sliding base, also with a cover. Illumination is superb, with three overhead LED light bars, two Fusion aft deck speakers, two Garmin CCTV cameras, and five additional overhead LED lights, all managed from a Fusion stereo head. A hatch offers emergency access to

the engine room, and nine teak tread steps with step lights lead down to the swim platform, flanked by hinged gates. For close quarters control, three aft deck docking stations, port and starboard, feature Glendinning controls with start/stop switches, thruster controls, and a horn button. Side deck engine room air intakes are neatly integrated, and refreshments are always on hand with a new Vitrifrigo 2.6 cubic foot stainless steel drink refrigerator.

Swim platform

A true waterfront terrace, the extra wide, two part teak over fiberglass swim platform comprises a 67 inch hydraulic section fore to aft and a 31 inch fixed section, plus a 14 inch wide boarding area to port and starboard. A new FRP folding step, nine feet wide and fifteen inches deep, eases movement between the fixed and lowered sections. Port and starboard teak tread access steps with step lights and hinged gates provide secure entry, while a Glendinning 50 amp Cablemaster manages shore power leads. A starboard side lockable pantograph door leads to the crew/engine room. The hydraulic teak platform incorporates teak relief grates, and to starboard you'll find a shower and a shore water inlet, with grab rails to port and starboard and an undermount stainless steel swim ladder for effortless reboarding. Two Lumitec spreader lights illuminate evening swims, and the Aritex platform mechanism offers a 1760 lb capacity for tender launching and as a swim up platform when slightly submerged. A three inch painted boot stripe crisps the waterline.

Crew area

Through the swim platform door, a removable three step access ladder descends into the crew area, where a single aft berth adjoins convenient rudder room access. Two handrails assist movement, and three drawers in an

aft facing cabinet expand stowage. All batteries are organized in an aft facing cabinet on slide out trays for serviceability. Entertainment and comfort are assured with a 32" Samsung TV, a Fusion stereo, digital A/C controls, and a smoke/fire detector. An insulated engine room door with a window provides visibility and quiet. The captain's head includes a Tecma toilet, a vanity with an above mount sink and a storage cabinet below, a separate storage cabinet, and a wet shower, while a large concealed storage area resides above the captain's bunk within the ceiling. To port, a locker houses the Glendinning gear and shore power breaker, plus a three shelf storage locker. The current owner holds plans to add a second crew bunk above the lower crew bunk, offering welcome flexibility.

Engine room equipment

Confidence underway begins here, with a full five year CAT engine warranty complementing hydraulic bow and stern thrusters and five blade end plate propellers turned by 3 inch Aquatech stainless steel shafts. Tides 3 inch shaft and rudder seals, SeaHawk black antifoul paint, and underwater exhaust with a transom bypass underscore reliable performance. Systems include a holding tank with macerator pump and level indicator, three shower sumps, and six Rule 3700 bilge pumps with high water alarms, all overseen by a Fireboy fire system with a 150 lb tank. Filtration is robust, with dual Racor filters with vacuum gauges serving the engines and dual Racor fuel filters with vacuum gauges for the generator, complemented by a Henderson handheld bilge pump. Climate is mastered by two 50,000 BTU inverter DC Clima chillers, while a Man Ship engine ventilation system, stainless steel fuel manifold, and sight gauges on two fuel tanks of 548 gallons each make operation intuitive. Four GFCI outlets and two Garmin engine room cameras add safety and oversight. Fresh water independence comes via an Aqua Whisper Pro 700 GPD watermaker and Groco stainless steel strainers at thru hulls, while a

Headhunter 600 GPD waste treatment system manages effluent cleanly. A generator exhaust gas separator quiets running. The Sleipner hydraulic system powers the thrusters, windlass, and stabilizers, and a Sleipner 5.5 kW at rest stabilizer motor ensures calm at anchor. Three coolant recovery bottles, a heat/fire sensor, six overhead LED tube lights, and a coiled washdown hose simplify daily checks. Twin Disc MGX 5136 gears deliver a 2:1 reduction, with an emergency escape hatch above and equipment stands mounted over the engines for clean service access. An oil change pump serves engines, gears, and generator, and hot water is supplied by two 20 gallon water heaters.

Rudder room

The rudder room is purpose engineered with an Amtrol expansion tank for the water heater system and a dedicated hydraulic power pack for the swim platform. Optimus steering pumps—one for each rudder—are joined by an emergency backup pump serving both rudders, with controls at the main helm. Hydraulic manifolds, the rudder angle indicator mechanism with a Garmin rudder feedback sensor, and an air compressor for the air horn system underscore meticulous engineering. Convenience and safety are enhanced by a GFCI outlet, LED lighting, a high water alarm, an in line water filter, and a mixer for the transom shower.

Electrical system

Power is delivered through a robust 12/24 volt DC and 120/240 volt AC electrical architecture. The main panel near the galley includes an Onan generator start panel with gauges, a Victron Energy inverter control, two three position rotary switches for shore port, shore starboard, and generator, fourteen 220 volt breaker protected circuits, fifteen 110 volt breaker protected circuits, and six inverter breaker protected circuits with a

simple inverter bypass switch, all presented behind a clear glass door. In the lower companionway, an auxiliary breaker panel holds eight 220 volt breaker protected circuits and seven 110 volt breaker protected circuits, likewise behind a clear glass door. Further specification includes two ANG boost transformers at 12.5 KVA each with built in galvanic isolators; Lifeline house batteries on sliding stainless steel trays in the crew cabin; a Victron Energy Skylla 24 volt 80 amp house battery charger; a Victron Energy Skylla 24 volt 80 amp engine battery charger; a Victron Energy Quattro 24 volt 120 amp inverter/charger; two Lifeline 8D engine start batteries; four Lifeline 8D house batteries; an Onan 29 kW generator in a sound shield; an ABB soft start for the at rest stabilizer electric motor; power inlet breakers in the lazarette; Glendinning 50 amp shore cord reels with seventy feet of cable each side; a full bonding system; and five remote battery switches.

Comments

NOW ASKING \$3,595,000! (Oct. 16, 2025) "INDIGO" debuts the new 70' Johnson generation, advancing from the acclaimed 65' by adding an aft crew cabin and a hydraulic tender platform. With four cabins, three heads, and a private aft crew suite, the 70' delivers the amenities of far larger yachts. At rest stabilization, hydraulic bow and stern thrusters, sewage treatment, a full Garmin electronics suite, a watermaker, and more combine to make the Johnson 70' an extraordinary value at this level. Full five year CAT engine warranty. US DUTY PAID at the time of original importation—NO EXTRA TARIFFS!

Disclaimer

The details of this vessel are offered in good faith but without guarantee or warranty as to accuracy or condition. Buyers should instruct their agents or

surveyors to investigate any particulars they wish to validate. This vessel is offered subject to prior sale, price change, or withdrawal without notice.

2025/26 updates & additions

Recent enhancements include fresh bottom paint and Propspeed, the addition of a second skylounge refrigerator, and a new aft deck drink refrigerator. A nine foot wide folding step now simplifies movement at the retractable swim platform. The exterior received a comprehensive three step buff and wax from the rub rail up (2/26), and the air conditioning system benefited from coil cleaning and a full flush (1/26).

CONTACTS

Shestakov Yacht Sales is a brokerage company specializing in the sale and service of yachts worldwide. The company offers services for buying and selling both new and used motor yachts, sailing vessels, and luxury superyachts. They also provide yacht registration, insurance, technical maintenance, crew selection, and charter organization services across the U.S., Canada, Latin America, the Caribbean, and the Bahamas.

The founder and lead broker of the company is Andrey Shestakov, a licensed and certified expert with extensive experience in marine engineering and shipbuilding.

The company has an extensive network of partnerships with major yacht manufacturers worldwide and provides services in multiple languages, including Russian, Ukrainian, Spanish, and English. The office is in Dania Beach, Florida, USA.

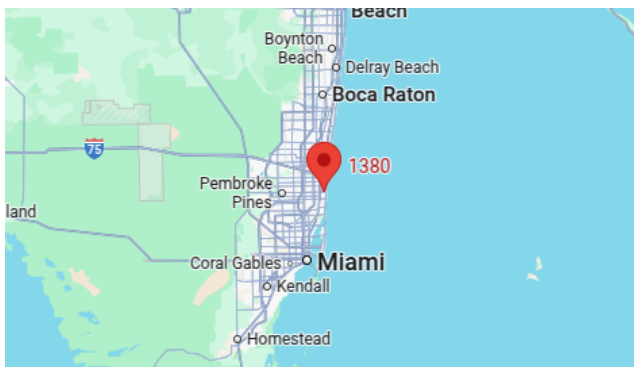
For more information and to view available yachts, you can visit the company's official website: <https://shestakovyachtsales.com>

Contact details

Phone: +1(954)274-4435

Email: andrey@shestakovyachtsales.com

Address



1380 Weeping Willow Way, Hollywood,
Florida 33019