



SHESTAKOV

Yacht Sales

THE GARLIC - MARLOW



Builder: [Marlow](#)

LOA: 70' 0" (21.34 m)

Year Built: 2003

Beam: 18' 0" (5.59 m)

Model: 70E

Max Draft: 14' 9" (4.50 m)

Price: \$599,000 USD Subject to change.

Cruising Speed: 10 Knots (11.51 MPH)

[See full listing on our website](#)

Location: Fort Lauderdale, United States

Max Speed: 19 Knots (21.86 MPH)

If you would like to buy a yacht **THE GARLIC - MARLOW** or would like help answering any questions concerning purchasing, selling, or chartering a yacht, please call **+1(954)274-4435** or click here on <https://shestakovyachtsales.com>

TABLE OF CONTENTS

OVERVIEW	3
SPECIFICATIONS	5
Basic Information	5
Dimensions	5
Speed, Capacities and Weight	5
Accommodations	5
Hull and Deck Information	6
Engine Information	6
GALLERY	7
DETAILED DESCRIPTION	15
CONTACTS	20

OVERVIEW

The Marlow Explorer is widely regarded as one of the premier bluewater motor yachts, and "The Garlic" is a superb, ready-to-cruise example. Mechanically sorted and maintained for serious passagemaking, she presents especially well with notably low engine hours compared with similar yachts and an asking price positioned to outperform the competition, making her an attractive proposition for the discerning long-range captain or owner. After completing multiple voyages to the Bahamas and regular use, she was only laid up when her owners elected to move into a larger Marlow; that boat is now in commission, and this 70E is being offered to a new stewardship, equally fitting for an owner-operator or an owner accompanied by crew.

A graceful profile and timeless lines underscore her offshore capabilities: designed for extended passages yet able to muster spirited performance when required. Her hull is finished in the much-desired Flag Blue Awlgrip, and the build quality reflects Marlow's commitment to robust construction. The hull and superstructure are a high-performance composite of DuPont Kevlar, vinylester resins, Core-Cell foam, and advanced fabrics, vacuum-bagged and molded in just three major pieces to reduce seams and enhance overall strength for reliable service in challenging seas and against floating debris. Patented Velocijet Strut Keels improve propulsion efficiency, tracking, and hull protection, while Core-Cell foam contributes exceptional rigidity as well as acoustic and thermal insulation, delivering a quieter, more comfortable ride on long ocean passages.

Recent maintenance and upgrades make her exceptionally turn-key: fresh paint above the rub rail and along the topsides, newly applied non-skid on the foredeck, a new bottom job and a fresh engine-room paint, and carpentry work including renewed steps to the crew area and engine room with the crane refinished and repainted. Systems have been renewed thoughtfully with

new engine and house batteries, re-bedded and recaulked windows, new engine alternators, a new watermaker and new propellers. Propulsion comes from twin Caterpillar 3406s (800 hp) with low hours for this model, providing a top speed of 19 knots; Naiad fin stabilizers, bow and stern thrusters, and an open flying bridge fitted with new Isinglass ensure confident handling and enjoyable open-air cruising. Accommodation is arranged as three staterooms and four heads, all services are up to date, and every AC compressor and air handler has been recently replaced.

Offered at a compelling price point and with the lowest hours on her twin Caterpillar power among current listings, "The Garlic" represents an exceptional combination of pedigree, performance and practical upgrades. She will respond beautifully to light cosmetic personalization to match her next owner's taste, and the sellers will consider all reasonable offers—presenting a rare chance to embark on effortless offshore adventures with confidence and style.

SPECIFICATIONS

Basic Information

Model Year:
2003

Country:
United States

Year Built:
2003

Dimensions

LOA:
70' 0" (21.34 m)

Max Draft:
14' 9" (4.50 m)

Beam:
18' 0" (5.59 m)

Speed, Capacities and Weight

Cruise Speed:
10 Knots (11.51 MPH)

Water Capacity:
500 Gallons

Max Speed:
19 Knots (21.86 MPH)

Fuel Capacity:
1760 Gallons

Accommodations

Total Heads:
4

Hull and Deck Information

Hull Material:

Fiberglass and Plastic Yachts

Hull Designer:

N/A

Deck Material:

Fiberglass

Interior Designer:

N/A

Hull Configuration:

N/A

Engine Information

Engines:

2

Engine Type:

Inboard

Manufacturer:

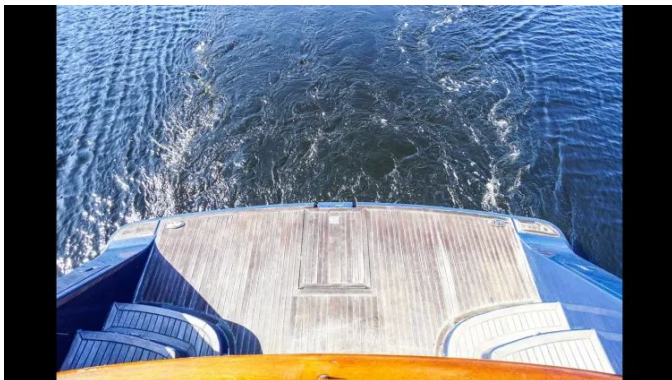
Caterpillar

Fuel Type:

Diesel

GALLERY

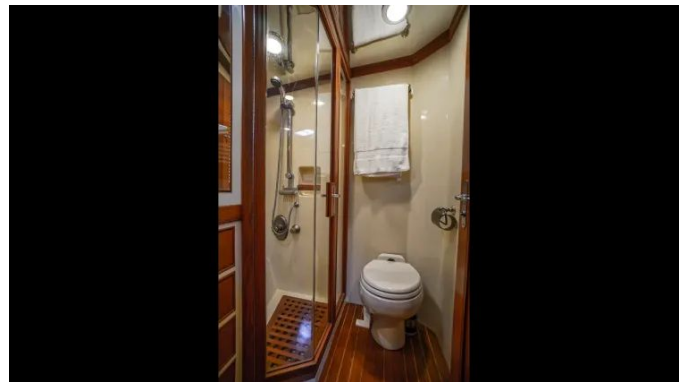


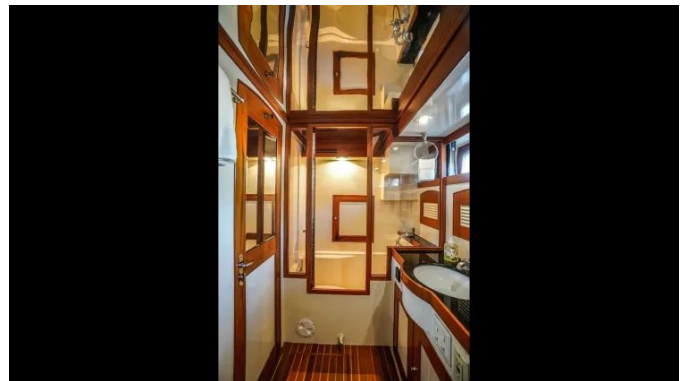














DETAILED DESCRIPTION

Manufacturer provided description

Marlow Explorer Yachts are produced in limited numbers, each hull meticulously crafted under continuous oversight and exacting quality-control procedures. The Marlow Explorer 70E has been conceived and built to traverse the world's oceans with uncompromised comfort and safety, while its proprietary Strut Keel system allows confident inland and island cruising by keeping the running gear fully protected.

Additional description

Built from only the finest materials, the Marlow Explorer's hull, deck and superstructure are specified with Dupont Kevlar, CoreCell and advanced engineering construction fabrics, with Vinylester and Epoxy resins and glues used throughout. Its mechanical systems adhere to the same uncompromising standard, incorporating premium components such as Aquadrive constant velocity joints, Tides seals and Trace inverters. Inside, the beautifully hand-finished accommodations are elevated by appliances and fittings from celebrated makers — Sub Zero, Dacor, Asko, Bosch, Franke, Grohe and their peers — while sumptuous Ultraleather and other top-brand fabrics dress every surface. The cumulative effect recalls a time when a yacht's value was measured by quality and restraint rather than excess.

Walkthrough

Step into a main salon that has been appointed with refined taste, where 24V Italian and Danish lighting, soft accent illumination tucked behind the valances, and three well-placed table lamps combine to create an inviting atmosphere

for both relaxing and formal dining. Tinted windows are dressed with elegant wood blinds and delicate curtain accents, while to starboard a plush Ultraleather built-in U-settee affords generous seating. A flat-screen television rises on an electric lift operated by remote, flanked by two exceptionally comfortable leather chairs positioned along the port side just forward of the stairs descending to the crew quarters. The adjoining dining area is anchored by a rectangular table with a glass top over teak and six dining chairs, complemented by a custom china cabinet with teak-divided, framed glass doors, cupboards and multiple drawers to stow dishes and glassware.

The U-shaped galley is designed for serious culinary work and effortless entertaining, its lustrous black granite countertops surrounding top-tier appliances and ample storage for housewares and provisions. A smooth Dacor cooktop with sea rails and potholders is paired with a Dacor twenty-seven-inch oven beneath, while a Fisher & Paykel single-drawer dishwasher and a SubZero refrigerator/freezer with four drawers handle cold storage and cleanup. Appointments such as a Grohe faucet, a Franke double sink with cover, a convenient cracker keeper, microwave and a warm teak and holly sole complete this highly functional workspace that opens seamlessly to the pilothouse social area.

Rising three steps, the pilothouse affords a commanding yet comfortable vantage, with a large helm chair for the captain beside a beautiful teak dinette with Ultraleather seating for guests. Overhead, a neatly organized systems panel houses the electronics, breakers, stabilizer controls, inverter control, tank tender and vessel control center. Navigation and communications are comprehensive, featuring twin Garmin 7215 chart plotters, a new forward-looking Garmin sonar, a Simrad AP20 autopilot with display and AP21, a Yacht Controller, an ICOM M604 VHF radio with antenna and an SSB ICOM IC M802. Instrumentation includes an ISI 5 wind square display, a Garmin GPI 10 display for depth and speed and a six-inch Ritchie compass, while a fifteen-inch flat-screen television and a new watermaker installed in 2022 round out the

amenities.

The athwartship master stateroom is exceptionally spacious, finished in teak and holly and centered on an island queen berth with under-berth drawers, a dresser and a linen closet. Portlights with screens, subtle night lighting around the berth and soft illumination behind the valances work alongside the 24V Italian and Danish fixtures to create a tranquil retreat. The expansive en-suite head offers a vanity with black granite counters, plentiful drawers and cabinets with shelving for toiletries and linens, a tub and shower, plus a separate shower room complete with its own sink, mirrored cabinet and additional storage. Aft and down two steps, a dedicated office area provides two desks with swinging stools that nest beneath, shelving above one desk and two fax and phone outlets at each workspace; to port, behind teak louvered doors, the upgraded washer and dryer are discreetly concealed. Additional conveniences include a large flat-screen television, a stereo system with CD, a full-height cedar-lined hanging locker with automatic lighting, a dresser and a hanging mirror.

Forward to port, the VIP stateroom features a queen island berth with under-berth storage, teak and holly sole, a cedar-lined hanging locker and a fifteen-inch Panasonic flat-screen television housed in a full-height TV locker, complemented by a telephone and reading lights above the berth. Its en-suite VacuFlush head, which also serves as a day head accessed from the companionway, provides granite counters and a separate stall shower; outboard of the shower lies a generous linen locker, and both the head and shower are fitted with exhaust fans vented outside the vessel.

Midships to port, the guest stateroom offers over/under twin berths on a teak and holly sole, a desk with drawer, a fifteen-inch Panasonic flat-screen television and a private head with shower and vanity. Storage is abundant, with a cedar-lined hanging locker in the stateroom and another cedar-lined hanging locker to starboard just outside in the companionway—bringing the

total to two cedar-lined hanging lockers—so two twin berths comfortably accommodate additional guests.

The flybridge provides an elevated entertaining and piloting environment, with twin helm seats forward and two large L-settees aft beneath the factory hardtop, while a canvas extension offers extra shelter for those relaxing aft. The helm suite is outfitted with a new Garmin 4212 chart plotter and new isinglass, an AP20 Robertson autopilot with display and an AP21 plug-in receptacle for remote, an R44 ten-inch color radar repeater in Sunview configuration, an RD68 Simrad VHF radio with heavy-duty antenna and mount, and a CE42 Simrad chart plotter/depth display. Entertainment and safety features include Sirius satellite radio, a new six-man life raft and a six-inch Ritchie compass, while the ISI 5 wind square display repeater, ISI 5 multi square display repeater and ISI 5 combi square display ensure clear, redundant data at a glance.

The electrical system has been engineered for reliability, incorporating an electrical bonding system; 20kw (3780 hrs) and 12kw (1422 hrs) generators housed within a custom Lexan see-through sound shield; a Trace 4kw inverter complemented by a new inverter; a battery parallel switch; and four 200AH batteries—one dedicated to the generator and four for service. A 24V lighting network with Italian and Danish fixtures bathes the interior in warm, efficient illumination, while the AC/DC distribution panel with magnetic circuit breakers, a voltage meter and four Glendinning cablemasters complete the shipboard power management.

Exterior amenities include a cockpit shower and a 1200lb Nautical Structures full-rotation davit that services a Nautica 12 WB tender powered by a 40HP Yamaha four-stroke outboard. Ground tackle and washdown arrangements are robust, featuring a Maxwell VWC 3500C windlass, twin stainless anchors, both fresh and salt water washdowns with a dedicated fresh water and sea water washdown system at the bow, in-deck storage bins for lines and fenders

and dinghy chocks to secure the tender underway.

The engine room reflects meticulous upkeep and thoughtful engineering, with recent services including heat exchangers, water pumps and a full service completed in Fall 2023. Lighting is excellent via 12V and 110V AquaSignal fixtures, and ventilation is assured by exhaust blowers and high-capacity induction blowers. Mechanical systems comprise a flexible drive coupling system, a Sidepower bow thruster rated at 20hp with a 48V dual propeller configuration, a stern thruster, NAIAD 250 heavy-duty digitized stabilizers, soft engine mounts and an emergency engine stop. The chilled-water air-conditioning compressors have been recently replaced and the vessel enjoys air conditioning throughout. Monitoring and safety features include an engine hour meter and gauges, an oil temperature alarm, a fire control system supported by three fire extinguishers and three-inch lead/foam engine room insulation. Fuel and bilge management are handled by FRP fuel tanks, dual Racor fuel separators with vacuum gauges for each engine, four 3700gph bilge pumps with auto and manual switches, and a watertight door with window leading forward from the crew quarters.

Disclaimer

The company provides the particulars of this vessel in good faith but does not guarantee or warrant the accuracy of the information presented, nor the current condition of the yacht. Prospective purchasers are recommended to instruct their own brokers or independent surveyors to verify any specifics they wish to confirm. Hours shown may not reflect very recent use; therefore buyers should verify actual hours before completing a purchase. This vessel is offered subject to prior sale, changes in price, or withdrawal from the market without notice.

CONTACTS

Shestakov Yacht Sales is a brokerage company specializing in the sale and service of yachts worldwide. The company offers services for buying and selling both new and used motor yachts, sailing vessels, and luxury superyachts. They also provide yacht registration, insurance, technical maintenance, crew selection, and charter organization services across the U.S., Canada, Latin America, the Caribbean, and the Bahamas.

The founder and lead broker of the company is Andrey Shestakov, a licensed and certified expert with extensive experience in marine engineering and shipbuilding.

The company has an extensive network of partnerships with major yacht manufacturers worldwide and provides services in multiple languages, including Russian, Ukrainian, Spanish, and English. The office is in Dania Beach, Florida, USA.

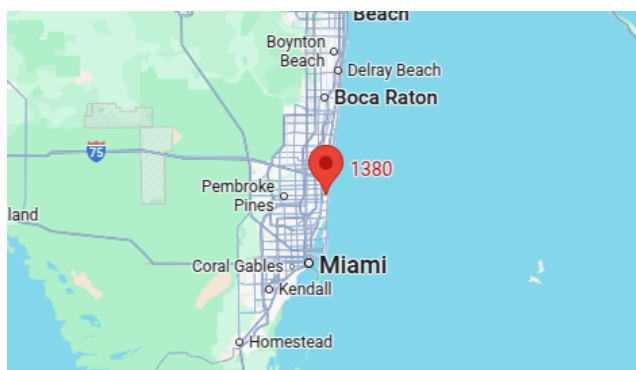
For more information and to view available yachts, you can visit the company's official website: <https://shestakovyachtsales.com>

Contact details

Phone: +1(954)274-4435

Email: andrey@shestakovyachtsales.com

Address



1380 Weeping Willow Way, Hollywood,
Florida 33019