



2008 SUNSEEKER MANHATTAN 70 - SUNSEEKER



Builder: [Sunseeker](#)

LOA: 70' 0" (21.34 m)

Year Built: 2008

Beam: 18' 0" (5.59 m)

Model: Manhattan 70

Min Draft: 16' 11" (5.17 m)

Price: \$799,500 USD Subject to change.

Max Draft: 18' 4" (5.58 m)

[See full listing on our website](#)

Location: Fort Lauderdale, United States

Cruising Speed: 23 Knots (26.47 MPH)

Max Speed: 32 Knots (36.83 MPH)

If you would like to buy a yacht **2008 SUNSEEKER MANHATTAN 70 - SUNSEEKER** or would like help answering any questions concerning purchasing, selling, or chartering a yacht, please call **+1(954)274-4435** or click here on <https://shestakovyachtsales.com>

TABLE OF CONTENTS

OVERVIEW	3
SPECIFICATIONS	5
Basic Information	5
Dimensions	5
Speed, Capacities and Weight	5
Accommodations	5
Hull and Deck Information	6
Engine Information	6
GALLERY	7
DETAILED DESCRIPTION	17
CONTACTS	23

OVERVIEW

2008 70' motor yacht — a marriage of spirited performance and refined elegance, lying in the United States. Built of robust fiberglass/composite and shaped on a reassuring Deep V hull, this 70 foot vessel combines athletic seaworthiness with inviting comfort, offering a quick, dry, and steady ride. Twin MAN diesel inboard engines supply the power to cruise comfortably at about 23 knots and surge to roughly 32 knots, while ample fuel capacity grants the freedom to push well beyond day trip horizons.

Cross the transom and the breadth of an 18 foot beam reveals itself in expansive, light filled interiors and generous entertaining zones crafted for effortless hospitality. The protected aft cockpit flows naturally into the main salon, encouraging sunlit afternoons and sophisticated evenings alike, and the well laid out galley sits perfectly to serve guests with ease. Four thoughtfully arranged heads provide privacy and convenience for owners and guests during extended voyages, while practical touches — low maintenance clean fiberglass decks underfoot, abundant storage, and straightforward access to machinery spaces — reflect a design where luxury meets sensible functionality.

On deck, broad side decks and secure handholds inspire confidence underway, and the foredeck becomes a favored station for sunbathing or enjoying aperitifs at dusk. A deep, seaworthy draft emphasizes offshore capability and steady tracking in open water, and generous water capacity supports longer stays at anchor. From brisk weekend runs to more ambitious itineraries, the yacht is a capable, comfortable platform that transforms each nautical mile into a pleasure.

Underway, her balanced running attitude and crisp throttle response make higher speed passages feel composed and rewarding. At anchor, the social areas come into their own — ideal for intimate dinners, family gatherings, or

celebratory events. Whether stepping up to a first large motor yacht or seeking a performance minded upgrade, this 70 foot platform delivers a rare union of speed, style, and substance.

Located in the United States and ready for inspection, this represents an exceptional opportunity for buyers who value a luxury yacht with performance cruiser credentials and Deep V confidence — equally suited as a refined Express style cruiser or a bluewater capable Sport Yacht powered by reliable twin MAN diesels.

WILL ACCEPT CLEAN TRADES!

Ideal for: Motor Yacht • Luxury Yacht • Performance Cruiser • Express Cruiser • Bluewater • Sport Yacht • Cruising Yacht • Deep V • Diesel • Twin MAN • Fiberglass/Composite

SPECIFICATIONS

Basic Information

Category:
Motor yachts

Year Built:
2008

Model Year:
2008

Country:
United States

Dimensions

LOA:
70' 0" (21.34 m)

Beam:
18' 0" (5.59 m)

Min Draft:
16' 11" (5.17 m)

Max Draft:
18' 4" (5.58 m)

Speed, Capacities and Weight

Cruise Speed:
23 Knots (26.47 MPH)

Water Capacity:
300 Gallons

Max Speed:
32 Knots (36.83 MPH)

Fuel Capacity:
1200 Gallons

Accommodations

Total Heads:
4

Hull and Deck Information

Hull Material:

Fiberglass and Plastic Yachts

Hull Designer:

N/A

Deck Material:

Fiberglass

Interior Designer:

N/A

Hull Configuration:

Deep Vee

Engine Information

Engines:

2

Engine Type:

Inboard

Manufacturer:

MAN

Fuel Type:

Diesel

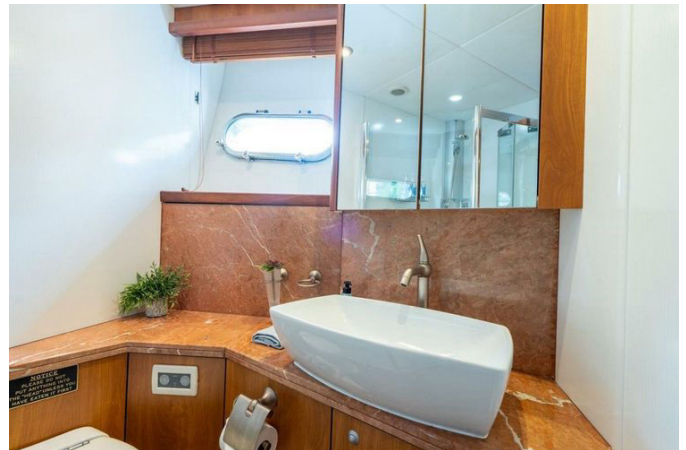
GALLERY







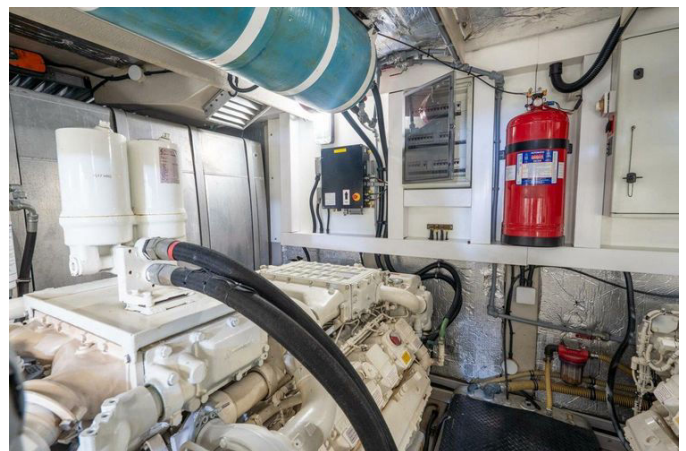














DETAILED DESCRIPTION

Description

Introducing the stunning 2008 Sunseeker Manhattan 70, a remarkable flybridge yacht that marries luxury and performance with effortless poise. Stretching to an overall length of 70 feet, she carries a sleek fiberglass hull with a deep V form for a notably smooth, composed ride in a range of sea states. Twin MAN V12 1550 diesel engines, each showing 2000 hours, deliver a confident cruising speed of 23 knots and a maximum hull speed of 32 knots, inviting both swift passages and spirited escapes. Thoughtfully arranged accommodations provide four spacious cabins and four well-appointed heads, ensuring privacy and comfort for family and guests. Every moment on board feels elevated by the yacht's comprehensive fit-out, designed to enhance daily living and entertaining alike. Whether hosting on the flybridge or unwinding in quiet anchorages, the Sunseeker Manhattan 70 makes a captivating impression, blending elegant aesthetics with assured performance for voyages you will remember long after you return to shore.

Manufacturer's description

The Manhattan 70 sets the benchmark for high-level entertaining, placing the emphasis on fun and excitement in Sunseeker's inimitable style. Seamlessly uniting luxury and practicality, she presents a broad beam, a graceful profile, and the range to cruise extended itineraries with ease. En-suite accommodation for eight and self-contained aft crew quarters underscore the yacht's versatility, allowing you to host generously while maintaining effortless service and privacy throughout.

Interior

Step aboard through full-width sliding companionway doors into a panoramic salon that floods with natural light. Forward, the dinette sits to port while a fully equipped galley lies to starboard, creating a convivial open-plan heart of the main deck. Also to starboard is the helm station, complete with a full array of engine monitoring gauges and electronic navigation equipment for precise, confident passage-making. Descending forward, guest staterooms are arranged with en-suite head and shower facilities; aft, the full-beam master suite enjoys its own en-suite head and shower. Indirect and courtesy lighting accentuates both interior and exterior spaces, and comprehensive air conditioning keeps the entire vessel perfectly tempered. Entertainment is effortless with DirecTV satellite in all staterooms, DVR in the salon and master, and a KVH at Sea dish antenna system to keep content flowing wherever you roam.

In the salon, a large dining area with a formal table invites elegant meals, while a stainless-steel sliding patio door opens to the aft cockpit to extend the social space. Comfort is assured with air conditioning, a flatscreen television, and a Bose Radio/CD/DVD cinema system. Illumination comes via 24v halogen overhead lighting, and power is conveniently at hand with three double AC sockets. Finishing touches include scatter cushions and custom hardwood flooring that enrich the room's warm, contemporary character. The

galley has been freshly remodeled, featuring a new custom granite countertop and bar, a new electric refrigerator and freezer, and a new ceramic hob, complemented by a microwave/grill/oven for versatile cooking. Hot and cold water, a tidy rubbish bin, an eight-place crockery set and eight-place cutlery ensure readiness for hosting. Two double AC sockets add convenience, while safety is addressed with a hand-held fire extinguisher and a first-aid kit. A dishwasher streamlines cleanup, stainless-steel fittings lend a clean, modern

edge, and an oversized stainless-steel sink makes preparation and service effortless.

At the helm, upholstered seats and a console with walnut-type fascia frame a commanding driving environment with hydraulic power steering and a classic steering wheel. Navigation and control are comprehensive with a Garmin radar/chart plotter/GPS navigator (new 2020) and Garmin autopilot (new 2020), full analogue engine instrumentation, an electric speed log, a depth sounder, a rudder indicator, fresh water and fuel gauges, and a dual-station VHF radio. Fine control comes via trim tab controls and a precision compass, while practicalities include a horn, switch panels, windscreen wipers with washers, demisters, glass holders, and a handheld fire extinguisher. A side-opening door leads directly to the side deck, streamlining movement on board.

Exterior

The exterior is purpose-designed for elegant living underway and at anchor, beginning with a passerelle for effortless boarding and richly detailed teak on the flybridge. The self-draining cockpit features a teak-laid sole and a molded staircase to the flybridge, with generous stern seating, a stern safety door, and a dedicated engine-room access hatch. Handling lines is made easy by two 24v stern capstan winches with fairleads, while entertainment flows outdoors via cockpit speakers. Nighttime ambience and safety are enhanced by 24v overhead cockpit lights and low-level courtesy lighting in the aft cockpit and along the side decks.

Security and seamanship details abound: pulpit and cockpit rails, a stainless-steel rub rail with rubber insert, a stainless-steel bow roller with anchor stop, and a stainless-steel bow plate. Ground tackle inspires confidence with a Delta anchor and 60 m of galvanized chain, managed by an electric windlass and capstan with controls on deck, in the cockpit, and on the

flybridge (24v) and a chain counter for precision. Practical stowage is provided by a chain locker with fender storage. Visibility at the helm benefits from a curved safety-glass windscreen swept by three 24v pantograph wipers with washers. Service points include fuel fillers port and starboard and a fresh-water filler, while IMCO navigation lights, a 24v remote spotlight, and an ensign staff with socket add polish and practicality. Final touches include a fender tie bar under the anchor-locker lid, six warps, eight stainless-steel deck cleats, and fitted screen covers for all main deck windows.

Engine room and miscellaneous equipment

Beneath the decks, twin engines reside in a soundproofed machinery space designed for quiet confidence at sea. Fuel is carried in two aluminum cross-balanced tanks with electric sending units, protected by separate fuel filters and water separators, and supported by automatic fire extinguishers. Safety systems include engine-room and forward-bilge flood alarms, two automatic bilge pumps, and two automatic flood pumps, supplemented by a manual bilge pump and a trusty boat hook. Power generation is robust, with a low-speed generator featuring an underwater silent exhaust and sound box, plus a second generator for redundancy. Shore-power flexibility comes via an AC dockside connection with an A/Sea Q Series power converter and a galvanic isolator.

Electrical systems are comprehensively specified with 24v and 12v DC distribution and full circuit-breaker protection. Energy storage is abundant: eight engine batteries on the 24v circuit, eight domestic batteries on the 24v circuit, and four generator batteries on the 12v circuit. An alternator split-charging system optimizes replenishment, with remote battery switches controlled from a cockpit locker for convenience. Charging is further supported by two chargers for the 24v circuits and a dedicated charger for the 12v circuits. Comfort and utility extend throughout with an AC water heater and AC

sockets distributed around the boat, while ventilation is handled by four 24v extractor fans to keep the machinery space cool and dry.

Recent upgrades

In 2025, the yacht received an extensive refit of wall and ceiling coverings (01/2025), refreshing the interior with a crisp, contemporary finish.

In 2024, all

batteries were replaced (12/2024). The engine room was professionally detailed, and a comprehensive bottom job was completed: the hull was sandblasted to bare gelcoat, then primed and repainted, with Propspeed applied to all running gear.

In 2023, the A/Sea power conditioner was fully

serviced by Wards, with all three modules and the contactor replaced for reliable shore-power conversion.

In 2022, upgrades and services included a

new A/C raw-water pump, a re-bedded windshield, a 2000 hour engine service, and a 2000 hour heat-exchanger service with the tanks re-sleeved. All main turbos were replaced across 2020, 2021, and 2022. A complete 3000 hour service was performed on both generators. Four new engine-room fire dampers were installed. A Viking eight-person liferaft from 2019 was recertified in 2022, and the fire-suppression system was certified. The engine room received another professional detail. Entertainment was upgraded with a 43" Samsung LCD in the master, and new aft-deck seating elevated outdoor comfort.

In 2021, the fresh-water pump was replaced, a new Smart "Y" was

added, and two A/C chillers were replaced. A new ice maker was installed, along with new prop-shaft seals and balancing, new strut bearings, tuned propellers with Propspeed, new cutlass bearings, and new rudder seals.

Ground-tackle handling was enhanced with a new anchor windlass motor and a new Maxwell chain counter. Interior refinements included new overhead

panels on the salon level and in the galley, plus a new headliner on the main deck level. Technical reliability was further improved with new thru-hulls, sea-cocks, and valves for the mains, generators, A/C, and watermaker raw-water intakes. A new reverse-osmosis water system was added, the salon gained a 43" LG LCD, and a rear-facing video camera improved situational awareness.

In 2020, a three-zone Fusion stereo was installed, together with a new Samsung washer/dryer. The A/C air handler and chiller were replaced, the engine room received new lighting, and four new extractor fans were fitted. New pumps were installed in the black-water tank, the port Vulcan coupling was replaced, and the fresh-water tank was re-lined. The 12v bow-thruster batteries were replaced. The A/Sea power conditioner/converter was fully serviced by Wards. Custom RGBW yacht signs and mermaids added a stylish finishing touch.

In 2019, a new Newmar 24v battery charger was fitted, along with new watermaker membranes and boost-pump filters. Safety and utility were bolstered with an EPIRB and a new water-heater coil. Boarding convenience improved with a new MARQUIP boarding ladder with dual-side attachment, and the flybridge received a new grill. Navigation and comms were significantly upgraded with four new Garmin chartplotters, new Garmin mini displays, a new Garmin autopilot, a new Garmin Phantom 12 kW radar, a new Garmin GPS, a new Garmin AIS, and two new Garmin VHF radios. A dual-frequency depth transducer enhanced soundings, while new bow and stern thruster controls and a new Yacht Controller transformed low-speed handling.

CONTACTS

Shestakov Yacht Sales is a brokerage company specializing in the sale and service of yachts worldwide. The company offers services for buying and selling both new and used motor yachts, sailing vessels, and luxury superyachts. They also provide yacht registration, insurance, technical maintenance, crew selection, and charter organization services across the U.S., Canada, Latin America, the Caribbean, and the Bahamas.

The founder and lead broker of the company is Andrey Shestakov, a licensed and certified expert with extensive experience in marine engineering and shipbuilding.

The company has an extensive network of partnerships with major yacht manufacturers worldwide and provides services in multiple languages, including Russian, Ukrainian, Spanish, and English. The office is in Dania Beach, Florida, USA.

For more information and to view available yachts, you can visit the company's official website: <https://shestakovyachtsales.com>

Contact details

Phone: +1(954)274-4435

Email: andrey@shestakovyachtsales.com

Address



1380 Weeping Willow Way, Hollywood,
Florida 33019