

1990 VERSILCRAFT 70 MOTOR YACHT CHALLENGER - VERSILCRAFT



Builder: [VERSILCRAFT](#)

Beam: 18' 0" (5.49 m)

Year Built: 1990

Model: 70 Motor Yacht Challenger

Price: \$247,000 USD Subject to change.

[See full listing on our website](#)

Location: Fort Pierce, United States

LOA: 70' 0" (21.34 m)

TABLE OF CONTENTS

OVERVIEW 3

SPECIFICATIONS 4

 Basic Information 4

 Dimensions 4

 Accommodations 4

 Hull and Deck Information 5

 Engine Information 5

GALLERY 6

DETAILED DESCRIPTION 14

CONTACTS 18

OVERVIEW

Flexible, no income verification financing is available, and Maribella is accepted at an approved liveaboard marina—offering the rare pleasure of a private floating residence in Florida. Countless thoughtful upgrades run throughout the yacht, and the accompanying photos disclose the full extent of those enhancements.

Built in 1990 by Challenger, Maribella is a 70' LOA luxury motor yacht that marries European pedigree with construction to U.S. standards. She presents four staterooms plus separate crew accommodations and a total of four heads. The full beam owner's suite is appointed with a king berth; the VIP stateroom sleeps on a queen; the guest cabin provides two single berths; and the captain's office converts into a snug single berth stateroom. Crew quarters add two additional single berths, and the plumbing arrangement includes three guest heads each with showers, plus a dedicated crew head and shower for privacy and convenience.

Power is supplied by dependable twin MAN V12 diesel engines, each rated at 1,000 hp. These four stroke powerplants are notably efficient at low RPM, automatically dropping to six cylinders per side at slow speeds to conserve fuel. Onboard electrical needs are met quietly and reliably by two generators and an inverter, ensuring robust shipboard power for long passages or comfortable living aboard. The hull is solid fiberglass, and her generous internal volume makes Maribella feel substantially larger than her length suggests.

The warm, contemporary interior was refitted in 2002 and showcases high gloss oak and burl veneers, with updated carpet (2015) and refreshed upholstery and curtains (2015). Ideal as an elegant liveaboard, a long range cruising platform, or a premium luxury motor yacht, Maribella offers bluewater capability, comfort, and style for discerning owners.

SPECIFICATIONS

Basic Information

Category:
Motor yachts

Year Built:
1990

Sub category:
Motor Yacht

Country:
United States

Model Year:
1990

Dimensions

LOA:
70' 0" (21.34 m)

Beam:
18' 0" (5.49 m)

Accommodations

Total Heads:
4

Crew Cabin:
1

Hull and Deck Information

Hull Material:

Fiberglass and Plastic Yachts

Hull Designer:

N/A

Deck Material:

Fiberglass

Interior Designer:

N/A

Hull Configuration:

N/A

Engine Information

Engines:

2

Engine Type:

Inboard

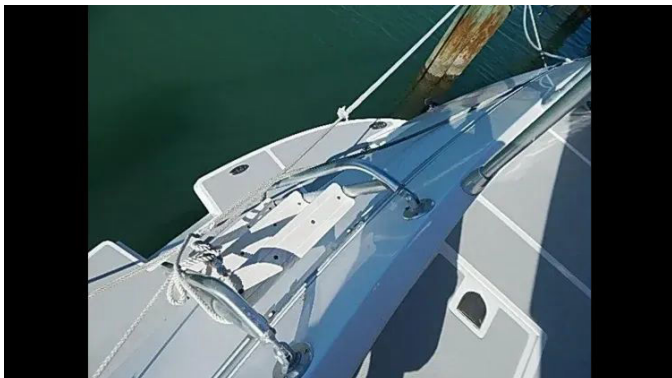
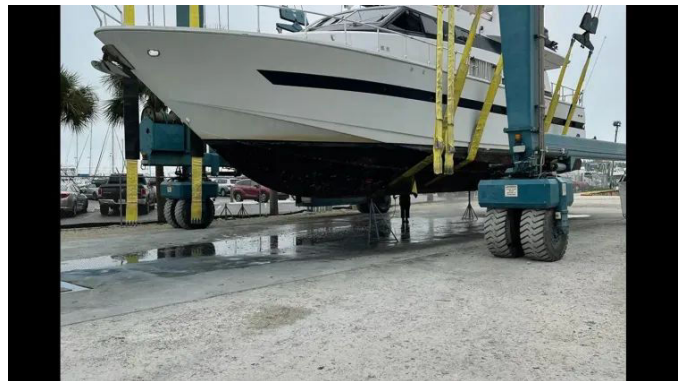
Manufacturer:

MAN

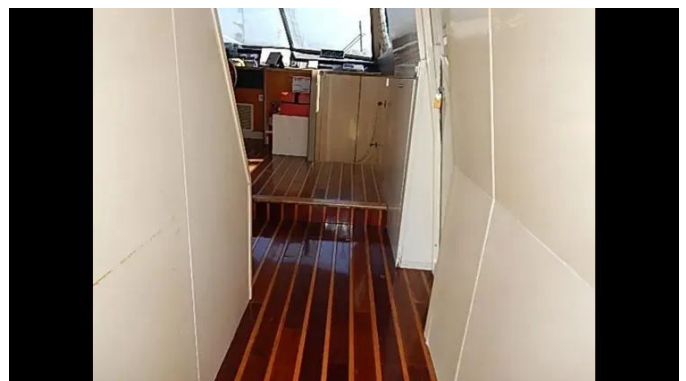
Fuel Type:

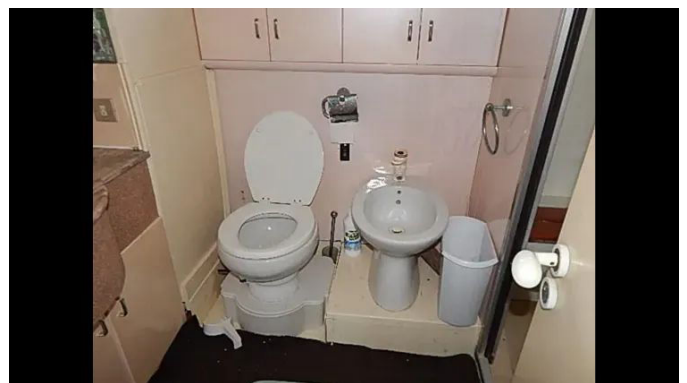
Diesel

GALLERY















ENGINE SURVEY + GENERATORS - 2021
 WINDLESS REPAIRED - 2021
 Bow THRUSTER REPAIRED - 2021
 2 NEW GARMIN GPS - 2021
 NEW WATER HEATER - 2022
 NEW BATTERY CHARGER 12V - 2023
 NEW 12VOLT BATTERY BANK - 2023
 FORWARD HALL SWITCHED TO 12V DC - 2023
 NEW AC CHILLER - 2022
 NEW AC CIRCULATION PUMP - 2022
 FIXED 5 FRESH WATER LEAKS FOR AC - 2022
 NEW DIVERter IN Shower IN DAY HEAD - 2021
 NEW 12VOLT HOUSE BANK BATTERYS - OCT-2021
 2-12VOLT DEEP CYCLE INVERTER BATTERYS - 2023
 2-4D 12VOLT BANK #1 - 2023
 1-631 12VOLT BANK #2 - 2023
 2-AGM GROUP 31 THRUSTER BATTERYS - 2023
 9-GROUP 31 ENGINE BATTERYS - 2021

HAUL OUT - DEC 2022
 SAND HULL - DEC 2022
 BARRIER COAT DEC 2022
 BOTTOM PAINT - DEC 2022
 Kilo PAC VOLTAGE REGULATOR - 2021
 FISHER PANDA CAPACITOR BANK - 2021
 FISHER PANDA CONTROL PANEL - 2021
 FISHER PANDA WATER PUMP (NEW) - 2021
 Kilo PAC NEW IMPELLER - 2021
 MAIN ENGINES OIL CHANGE - 2022
 FIXED VENT FAN IN MASTER DAY HEAD - 2023
 REWIRED EXHAUST FANS IN ENGINE ROOM - 2022



DAVIT HYDRO CYLINDER - 2023
 WIRELESS FRESH WATER TANK (NOT WORKING)
 NEW VACUFLUSH DAY HEAD - 2022
 NEW VACUFLUSH MASTER - 2023
 NEW HEAD VIP STATEROOM - 2024
 NEW MACERATOR PUMP MAIN HOLDING TANK - 2022
 NEW MACERATOR PUMP VIP HEAD - 2024
 REPLACED RULE 2000 IN FORWARD SUMP - 2021
 LED LIGHTS UNDER STAIRS - 2022
 REWIRE + FIX UNDERWATER LIGHTS - 2024
 REMOVED OLD NAV COMPUTER + MISC WIRES - 2022
 BEFIT VIP HEAD W/DECK PUMP OUT + MACERATOR - 2024
 REWIRED SALON RADIO - 2023
 FIXED OUTSIDE DECK LIGHTS - 2022
 FIXED RUNNING LIGHTS - 2021
 NEW CANVAS WIND SHIELD COVER - 2024
 NEW Bimini TOP + CUSHIONS ON BRIDGE - 2024
 3 NEW AC AIR HANDLERS - 2023
 2 NEW AC CONTROL BOARDS - 2023

DETAILED DESCRIPTION

Description

No income verification financing is available, and the yacht sits in a legal liveaboard marina in Florida, so your floating condo lifestyle can begin the moment you step aboard. This 1990 Challenger motor yacht, known as MARIBELLA, delivers the generous volume of a pedigree European build crafted to U.S. standards with a solid fiberglass hull—truly a big boat for its size—and a long list of upgrades best appreciated in the photos. Measuring 70 ft LOA with an 18 ft beam, the layout is designed for extended cruising and comfortable life aboard: a full-beam master with a king-size bed, a VIP stateroom with a queen-size bed, a guest stateroom with two single beds, a captain's quarters/office with a single bed, and separate crew quarters with two single berths. There are a total of four heads on board—three guest heads with showers plus a crew head with shower. Propulsion is courtesy of reliable twin MAN V12 diesel engines rated at 1,000 hp each. Notably fuel-efficient at low RPM, each MAN can drop to six cylinders at slow speed for economy, and, unlike Detroit Diesels, they are four-cycle. Ship's power is supported by two generators and an inverter. The interior, refurbished in 2002, is warm and contemporary, finished in high-gloss oak and burl that glows in natural light. Soft goods were refreshed with upgraded carpet in 2015, alongside new upholstery and curtains the same year, lending a fresh, curated ambiance throughout.

Electronics

Command and control are comprehensive and redundant for confident passagemaking. The navigation suite centers on two Furuno GPS with WAAS and a Furuno 48 mile radar integrated with Furuno NavNet, aided by a Dell

navigation computer. Communications are robust with a West Marine VHF, a Standard VHF, an Icom SSB, and a Qualcomm satellite phone. Helmsmanship is refined by a Robertson autopilot, a rudder indicator, a Simrad Tri Data wind display, and a precise compass. Shipboard awareness is enhanced by a full intercom system, cameras in the engine room and cockpit, and a Tank Tender alongside the horn and a dedicated bilge pump control center. Controls for the American Bow Thruster are at hand for fingertip maneuvering.

Electrical

The yacht operates on both 220/110 V AC and 24 V DC systems. Ship's power is delivered by one 27 kW, 60 Hz generator showing 3,400 hours as of May 2015, complemented by a Fisher Panda 12 kW unit installed new in 2001. Batteries were renewed in November 2014, and there is a dedicated battery charger for the gensets. Shore connectivity is versatile with two 50 amp and two 220 volt shore power inlets located at the bow and stern, plus telephone and cable inlets forward and aft. An inverter rounds out the system to seamlessly bridge power needs under way and at anchor.

Deck equipment

Purposeful deck gear makes MARIBELLA a joy to operate and entertain. A 2005 Rendova 13 foot tender with a 50 hp four stroke Yamaha comes fully outfitted with VHF, compass, depth sounder, CD, a Bimini top, and a radar arch, launched and retrieved via a Nautical Structures davit. Ground tackle is handled by an anchor windlass with remote controls at both the flybridge and wheelhouse. On deck you'll find a Bimini top and exterior covers, a MarQuipt Tide Ride boarding ladder, cockpit capstans, an intercom at the bow, aft deck, engine room and both control stations, plus a swim ladder. Video color monitors on the aft deck and in the engine room keep watch where it matters

most.

Safety equipment

Safety is built in with a CO2 system installed in October 2002, an EPIRB 406 for emergency location, and fire extinguishers thoughtfully placed in all cabins and the galley.

Mechanical

Mechanical care has been conscientious and timely. The main engines received service in Fort Lauderdale in November 2011; during the October 2011 yard period, all shafts, propellers, and transmissions were checked, aligned, and calibrated. Internal cooling systems for the main engines, generators, and air conditioning were comprehensively serviced in 2011. Close quarters authority comes from an American bow thruster rated at 22 hp. Filtration is robust with Racor dual fuel filters on the main engines and a Racor single fuel filter for the generator. Bilge management is handled by five automatic bilge pumps tied into a manifold system. The engine room was repainted in May 2011—including machinery, mains, plumbing, and floorboards—and new fuel lines were installed the same month. An oil change system services the main engines, generators, and transmissions for clean, efficient maintenance.

Features

Thoughtfully specified for comfort and autonomy, the yacht provides shore power inlet, a generator, and an inverter. The electronics suite includes a depthsounder, radar, a TV set, a navigation center, an autopilot, a compass, GPS, and VHF. Interior amenities comprise an electric bilge pump, marine head, air conditioning, heating, hot water, and a battery charger, creating a

self-contained environment whether alongside, at anchor, or at sea.

Propulsion

Power is delivered by twin MAN V 12 diesel engines from 1990, each producing 1,000 hp, with approximately 2,200 hours, driving inboard direct-drive shafts. These four-cycle MANs are notably efficient at displacement speeds, with the capability to operate on six cylinders per engine at slow speed for improved fuel economy, making long passages smoother, quieter, and more economical.

Specifications

Dimensions underscore her presence: length overall 70 ft and beam 18 ft. The hull is fiberglass, built to U.S. standards for long-term durability. Tankage includes fresh water, fuel, and holding tanks. Accommodations are generous with four guest cabins and four guest heads, plus one crew cabin and one crew head, ensuring privacy and practicality for owners, guests, and crew alike.

CONTACTS

Shestakov Yacht Sales is a brokerage company specializing in the sale and service of yachts worldwide. The company offers services for buying and selling both new and used motor yachts, sailing vessels, and luxury superyachts. They also provide yacht registration, insurance, technical maintenance, crew selection, and charter organization services across the U.S., Canada, Latin America, the Caribbean, and the Bahamas.

The founder and lead broker of the company is Andrey Shestakov, a licensed and certified expert with extensive experience in marine engineering and shipbuilding.

The company has an extensive network of partnerships with major yacht manufacturers worldwide and provides services in multiple languages, including Russian, Ukrainian, Spanish, and English. The office is in Dania Beach, Florida, USA.

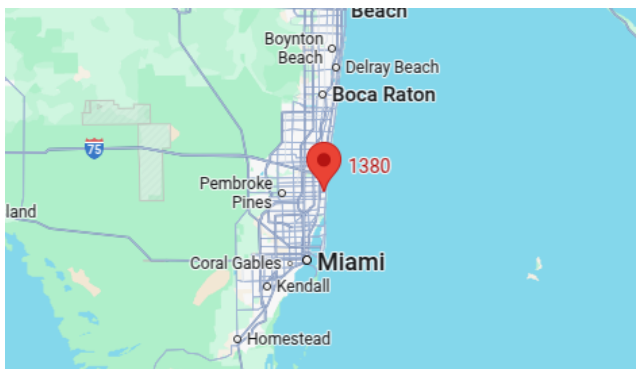
For more information and to view available yachts, you can visit the company's official website: <https://shestakovyachtsales.com>

Contact details

Phone: +1(954)274-4435

Email: andrey@shestakovyachtsales.com

Address



1380 Weeping Willow Way, Hollywood,
Florida 33019