

## MISS AMY - PRINCESS



**Builder:** [PRINCESS](#)

**LOA:** 70' 0" (21.34 m)

**Year Built:** 2020

**Beam:** 17' 0" (5.38 m)

**Model:** F70

**Max Draft:** 16' 11" (5.17 m)

**Price:** \$3,050,000 USD Subject to change.

**Cruising Speed:** 26 Knots (29.92 MPH)

[See full listing on our website](#)

**Location:** Lighthouse Point, United States

**Max Speed:** 35 Knots (40.28 MPH)

---

# TABLE OF CONTENTS

---

<b>OVERVIEW .....</b>	<b>3</b>
<b>SPECIFICATIONS .....</b>	<b>4</b>
Basic Information .....	4
Dimensions .....	4
Speed, Capacities and Weight .....	4
Accommodations .....	4
Hull and Deck Information .....	5
Engine Information .....	5
<b>GALLERY .....</b>	<b>6</b>
<b>DETAILED DESCRIPTION .....</b>	<b>21</b>
<b>CONTACTS .....</b>	<b>27</b>

---

## OVERVIEW

---

Miss Amy is a U.S.-spec 2020 Princess F70 flybridge motor yacht that marries classic refinement with spirited performance. Her interior is appointed with high-gloss walnut joinery set against Carrara-white worktops, creating a crisp, contemporary palette that complements the yacht's purposeful lines. Propelled by twin 1,400 hp MAN diesels, she exceeds 35 knots and settles into a refined, efficient cruise in the mid-to-upper 20-knot range, offering the composure and exhilaration expected of a luxury planing yacht.

Extending to 70 feet, the yacht's generous volume is arranged as a 4-stateroom, 3-head layout, while transom crew quarters provide dedicated accommodation for a captain and mate. Notable among modern Princess F70 flybridge models, she is fitted with a Seakeeper 16 gyro stabilizer, a comprehensive Garmin electronics suite, the Allure trim package, a watermaker, Starlink connectivity and an array of additional upgrades—an exceptional proposition in the premium motor yacht, cruising yacht and performance yacht arenas.

---

# SPECIFICATIONS

---

## Basic Information

---

**Category:**  
Motor yachts

**Year Built:**  
2020

**Model Year:**  
2020

**Country:**  
United States

## Dimensions

---

**LOA:**  
70' 0" (21.34 m)

**Max Draft:**  
16' 11" (5.17 m)

**Beam:**  
17' 0" (5.38 m)

## Speed, Capacities and Weight

---

**Cruise Speed:**  
26 Knots (29.92 MPH)

**Water Capacity:**  
240 Gallons

**Max Speed:**  
35 Knots (40.28 MPH)

**Fuel Capacity:**  
1347 Gallons

## Accommodations

---

**Total Heads:**  
3

**Crew Berths:**  
1

## Hull and Deck Information

---

**Hull Material:**

Fiberglass and Plastic Yachts

**Hull Designer:**

N/A

**Deck Material:**

Fiberglass

**Interior Designer:**

N/A

**Hull Configuration:**

N/A

## Engine Information

---

**Engines:**

2

**Engine Type:**

Inboard

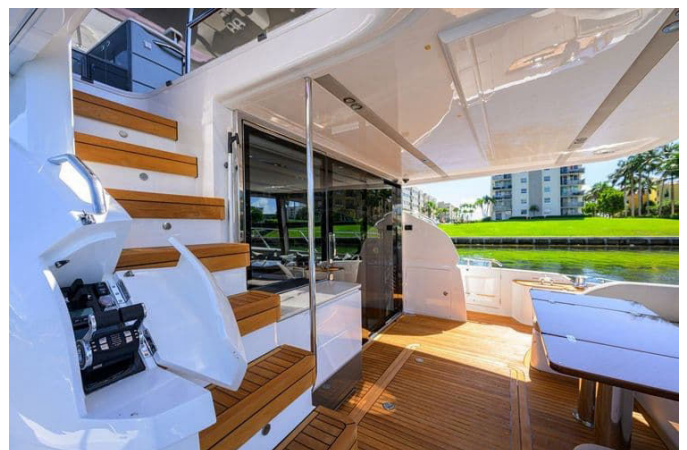
**Manufacturer:**

MAN

**Fuel Type:**

Diesel

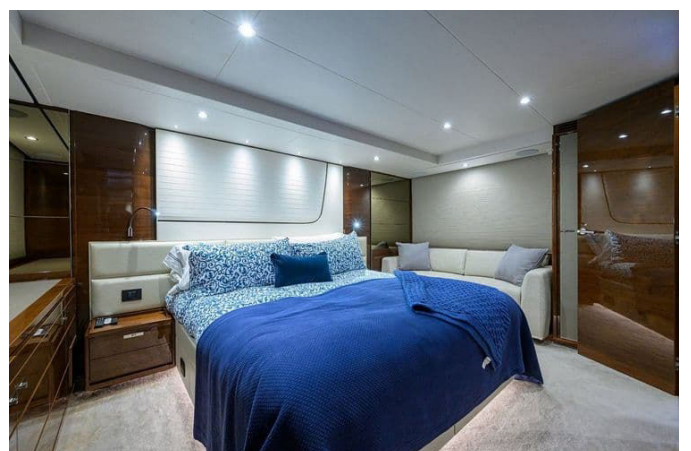
# GALLERY



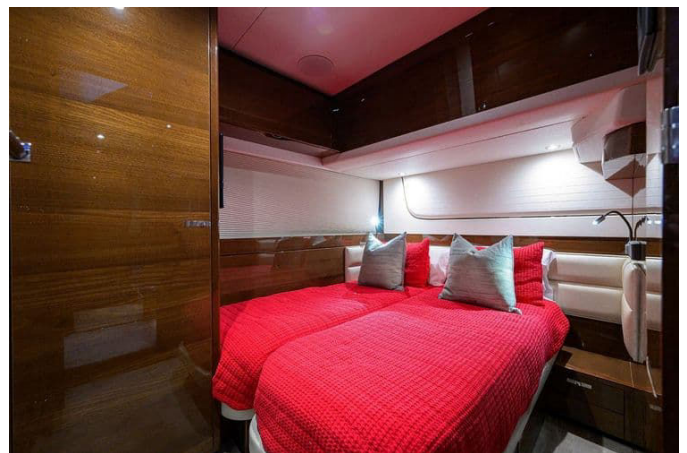










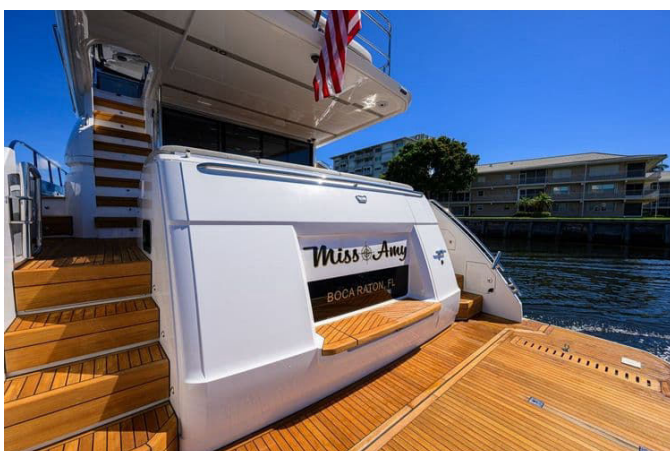




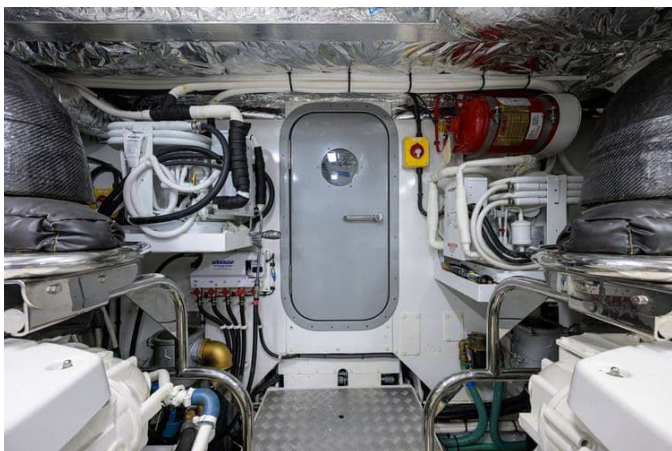














---

# DETAILED DESCRIPTION

---

## Upgrades and options US spec

---

Curated for US waters, this yacht is specified with a Seakeeper Gyro 16 for remarkable stabilization, new carpet in the salon and master stateroom installed in January 2026, and a robust water maker to extend your cruising independence. Comfort and protection on the move come from an EZ2CY three-sided flybridge enclosure and the striking ALLURE PACKAGE, featuring a silver hardtop, tastefully applied paint accents throughout the vessel, teak steps, a silver helm, and quilted helm chairs with elegant contrast piping. Precision handling is assured by bow and stern thrusters and an aft deck docking station, while always-on connectivity is delivered by the Starlink SAT system. A hydraulic swim platform, teak decks, and six Lumishore underwater lights elevate life at anchor, complemented by custom carpet runners and high-gloss teak exterior tables. Power and entertainment are equally refined, with a 29 kW Onan generator, a comprehensive Garmin electronics package, and a JL Audio/Fusion stereo package. Practicalities include a complete exterior cushion cover package, aft crew quarters, the ElectroSea Clearline AC sea strainer system, additional long-range fuel tanks totaling 240 gallons, a central vac system, an upgraded fridge/freezer in the galley, and electric shore power cord reels to simplify dockside setup.

## Layout

---

Thoughtfully arranged for privacy and flexibility, the aft crew cabin provides two single berths, hanging lockers, opening portholes, and an en-suite with electric toilet, wash basin, and a dedicated shower compartment, with both spaces illuminated by overhead LEDs. Independent climate control keeps the team comfortable via a separate 6,000 BTU air conditioning unit. Family and

guests enjoy adaptable accommodations with electric conversions in both starboard and port cabins to create double berths at the touch of a button, while an ottoman with integrated storage in the salon keeps the living area serene and uncluttered.

## Interior furniture

---

A rich gloss walnut interior sets a warm, contemporary tone, with the galley and helm floors also finished in walnut for a seamless visual flow. Matching timber flooring extends into the aft dining area, mirroring the galley and helm specification to create a cohesive, yacht-wide aesthetic.

## Galley

---

The galley is elevated with Avonite surfaces in Carrera white, delivering a crisp, luminous workspace that resists wear. A built-in garbage disposal enhances everyday convenience and clean, effortless meal prep.

## Styling

---

The yacht wears the ALLURE package with hardtop, delivering a distinctive silhouette and refined detailing. Inside, helm seats feature exquisite quilting with contrast piping and paneling, while outside the flybridge helm chairs echo this quilting and piping for a unified design language. Practical elegance extends with teak step nosing that includes side and foredeck steps, an exterior lighting upgrade, and a flybridge console and wet bar finished in metallic oyster grey; the hardtop and air intake covers are likewise sprayed in metallic oyster grey. On the foredeck, sunbed cushions and adjustable teak headrests are upholstered in Comfort Exterior II Met, blending tactile luxury with robust outdoor performance.

## Bathroom

---

All bathrooms are appointed with worktops in Carrera white paired with Carrera white tile flooring, creating a bright, spa like ambience that is both timeless and easy to maintain.

## Deck hardware

---

A hydraulic transom swim platform with a 550 kg (1,212 lbs) safe working load invites effortless water access and tender handling, complemented by a maximum recommended tender weight of 430 kg (947 lbs). Confident close quarters maneuvering is aided by third station controls in the cockpit, including engine controls, thruster controls, and engine emergency stops. Cruising essentials are covered with additional anchor chain, dinghy chocks on the bathing platform, and side boarding gates to the cockpit area, while a high gloss teak foredeck table sets the stage for elevated open air dining.

## Electrical

---

For commanding presence and clarity, Buell air horns are fitted in place of electric units. Shore side connections are simplified with two Glendinning Cablemasters and a pair of 50 AMP isolation boost transformers, while a separate washer and dryer replace the standard arrangement for true home style convenience. Night docking confidence comes from stern docking lights mounted beneath the flybridge overhang, and a dedicated icemaker at the flybridge wet bar keeps refreshments perfectly chilled.

## Audio, video & communications

---

Entertainment is immersive throughout: a 49" UHD LED TV on a powered lift

anchors the salon, paired with a Fusion Apollo RA 770 featuring Wi-Fi/DAB, external USB, Blu-ray, and four Fusion six-inch speakers. The master suite mirrors this with its own 49" UHD LED TV and Fusion Apollo RA 770 with Wi-Fi/DAB, external USB, Blu-ray, and four Fusion six-inch speakers. Guests enjoy a 28" LED TV and Fusion MS AV755 radio/DVD in the forward VIP, plus 24" LED TVs with Fusion radio/DVD players in both port and starboard staterooms. Up top, a Fusion SRX 400 with Wi-Fi/Bluetooth and waterproof Fusion Signature six-inch speakers brings rich, connected sound to the flybridge and is linked to the salon system for seamless control.

## Navigation equipment

---

Always connected and confidently guided, the yacht features a Starlink SAT system and a full Garmin suite in place of the standard fit. At the main helm, twin Garmin GPSMAP 8616 sixteen-inch displays are installed, with one unit in the xsv variant, complemented by twin Garmin GPSMAP 8616 sixteen-inch displays at the upper helm. Navigation intelligence includes a Garmin GMR Fantom 54 radar (6 kW with a four-foot open array scanner), Garmin GMI20 multifunction instruments, a Garmin GHP20 autopilot, and a Garmin VHF315 handset VHF radio. The Garmin network is fully integrated with the engines, and chase tubes are pre-run for effortless future installation of satellite TV.

## Exterior upholstery / canvas / covers

---

Sophisticated outdoor comfort is expressed in cockpit and flybridge seating upholstered in Comfort Exterior Met Macadamia with a Met Storm contrast, protected when not in use by dedicated cockpit seating covers. The foredeck sunbed and seating, complete with teak lifters, are finished to match in Comfort Exterior Met Macadamia with Met Storm contrast for a cohesive, elegant exterior palette.

---

## Additional features

---

A GRP flybridge hardtop with dimmable lighting crowns the yacht, while gyro stabilization via Seakeeper 16 transforms the ride; a second Seakeeper control panel at the upper helm adds fingertip command. The dining area gains a bespoke cabinet at the aft end to starboard for refined storage. Nightlife at anchor glows with six Lumishore EOS TIX 803 underwater lights—four across the transom and one centered beneath each of the master stateroom’s port and starboard windows. Nautical heritage cues include a 75MY style flag pole centered on the aft flybridge overhang and a 75MY style navigation mast in place of the standard fit. For sonic richness, JL Audio speakers replace the standard Fusion units, with four 7.7 inch JL Audio speakers integrated into the flybridge hardtop, two additional 7.7 inch JL Audio speakers on the flybridge, and two 7.7 inch JL Audio speakers in the foredeck seating area; a Fusion subwoofer in the salon and master cabin, tied to the Apollo RA770 system, delivers deep, articulate bass. Further confidence and convenience come from the ElectroSea CL 900 X1.5 Clearline control system and the continued presence of high gloss exterior tables.

---

## Generator

---

Power on demand comes from an upgraded Onan 29 kW, 60 Hz generator, delivering quiet, reliable electricity to support all onboard systems and amenities at sea or at anchor.

---

## Engines & drive

---

Docking finesse and offshore confidence are enhanced by variable speed bow and stern thrusters controlled from dual stations, while a centralized oil changer services the engines, transmissions, and generator to streamline

maintenance. Extended range is assured by an additional long range fuel tank of 264 US gallons, opening up broader cruising horizons.

## Exclusions

---

The tender shown or referenced is excluded from the sale.

# CONTACTS

---

Shestakov Yacht Sales is a brokerage company specializing in the sale and service of yachts worldwide. The company offers services for buying and selling both new and used motor yachts, sailing vessels, and luxury superyachts. They also provide yacht registration, insurance, technical maintenance, crew selection, and charter organization services across the U.S., Canada, Latin America, the Caribbean, and the Bahamas.

The founder and lead broker of the company is Andrey Shestakov, a licensed and certified expert with extensive experience in marine engineering and shipbuilding.

The company has an extensive network of partnerships with major yacht manufacturers worldwide and provides services in multiple languages, including Russian, Ukrainian, Spanish, and English. The office is in Dania Beach, Florida, USA.

For more information and to view available yachts, you can visit the company's official website: <https://shestakovyachtsales.com>

## Contact details

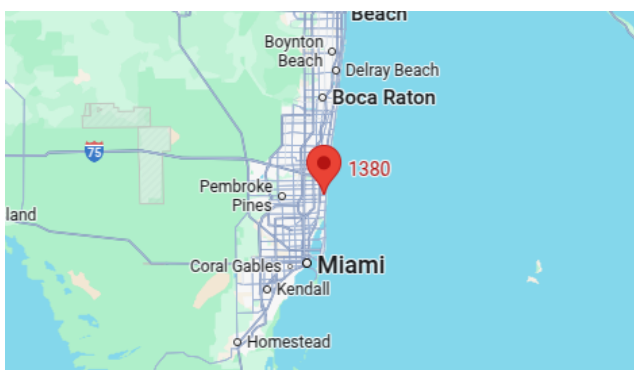
---

**Phone:** +1(954)274-4435

**Email:** [andrey@shestakovyachtsales.com](mailto:andrey@shestakovyachtsales.com)

## Address

---



1380 Weeping Willow Way, Hollywood,  
Florida 33019