



SHESTAKOV

Yacht Sales

## TRIBELESS - MIKELSON



**Builder:** [MIKELSON](#)

**Beam:** 19' 0" (5.94 m)

**Year Built:** 2002

**Max Draft:** 16' 5" (5 m)

**Model:** 70 Sportfisher

**Price:** \$699,000 USD Subject to change.

[See full listing on our website](#)

**Location:** Marina del Rey, United States

**LOA:** 70' 0" (21.34 m)

If you would like to buy a yacht **TRIBELESS - MIKELSON** or would like help answering any questions concerning purchasing, selling, or chartering a yacht, please call **+1(954)274-4435** or click here on <https://shestakovyachtsales.com>

# TABLE OF CONTENTS

**OVERVIEW ..... 3**

**SPECIFICATIONS ..... 4**

    Basic Information ..... 4

    Dimensions ..... 4

    Speed, Capacities and Weight ..... 4

    Accommodations ..... 4

    Hull and Deck Information ..... 5

    Engine Information ..... 5

**GALLERY ..... 6**

**DETAILED DESCRIPTION ..... 17**

**CONTACTS ..... 20**

## OVERVIEW

---

Generous in scale and thoughtfully arranged, TRIBELESS was conceived for island-hopping weekends with friends or serious offshore angling excursions—the very pursuits a convertible sportfishing yacht of this caliber is meant to deliver. The cockpit is expansive and uncluttered, allowing for effortless movement when working the lines or for setting up comfortable seating to lounge aft, and it is conveniently served by a dayhead located just abaft the salon. Below, a warm and inviting interior offers a tranquil haven underway, with three staterooms for owner and guests, two crew cabins accommodating up to four crew, and five heads. A broad, light-filled salon opens directly to the aft deck to create an effortless indoor–outdoor flow, while the flybridge provides an elevated vantage perfectly suited to sunlit coastal cruising or to spotting birds and bait offshore. Mickelson’s reputation for versatile, well-executed flybridge motor yachts is evident throughout, and TRIBELESS stands as a distinguished example.

LLC owned and meticulously maintained, TRIBELESS received comprehensive servicing to engines, generators, and transmissions in April 2025. She is fin stabilized and propelled by twin 3412 CATs, with twin Onan 27.5 kW generators providing reliable ship’s power. Close-quarters handling is assisted by a Side-Power bow thruster, her tournament heritage is reinforced by Rupp triple-spreader outriggers, and a Novurania RIB equipped with a Yamaha 60 completes the package—elevating this luxury sportfisher from a capable bluewater cruiser to a refined offshore performer.

# SPECIFICATIONS

---

## Basic Information

---

**Model Year:**  
2002

**Country:**  
United States

**Year Built:**  
2002

## Dimensions

---

**LOA:**  
70' 0" (21.34 m)

**Max Draft:**  
16' 5" (5 m)

**Beam:**  
19' 0" (5.94 m)

## Speed, Capacities and Weight

---

**Water Capacity:**  
350 Gallons

**Fuel Capacity:**  
2200 Gallons

## Accommodations

---

**Total Heads:**  
4

**Crew Cabin:**  
2

## Hull and Deck Information

---

**Hull Material:**

Fiberglass and Plastic Yachts

**Hull Designer:**

N/A

**Deck Material:**

Fiberglass

**Interior Designer:**

N/A

**Hull Configuration:**

N/A

## Engine Information

---

**Engines:**

2

**Engine Type:**

Inboard

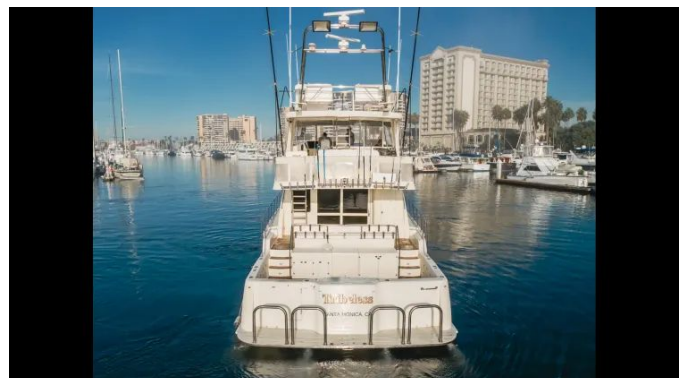
**Manufacturer:**

Caterpillar

**Fuel Type:**

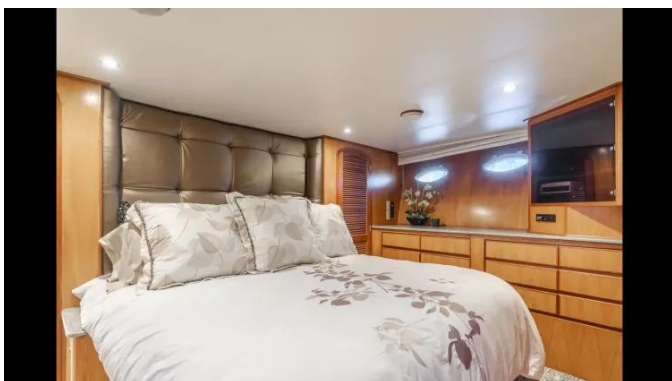
Diesel

# GALLERY

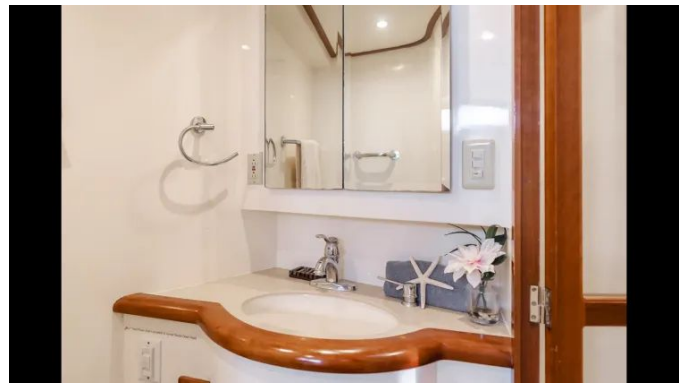




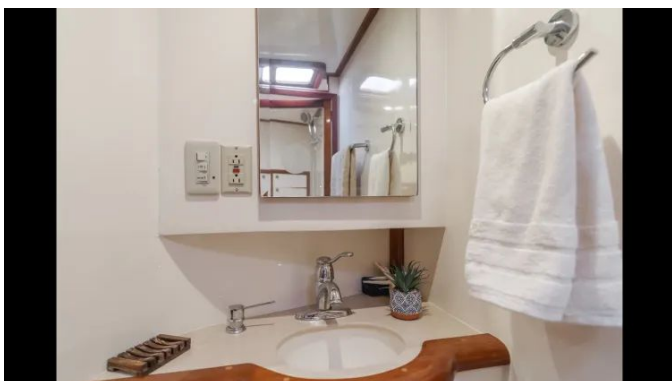




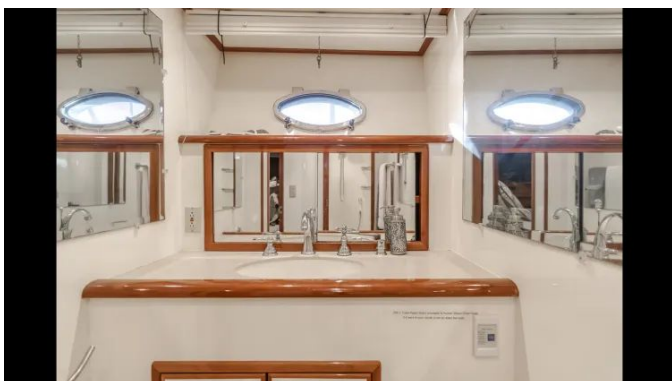














---

## DETAILED DESCRIPTION

---

### Galley

---

Conceived for culinary artistry, the galley is outfitted with a KitchenAid dishwasher, a GE Profile four-burner flush-set stovetop, a GE Profile Advantium 120 oven and microwave, a GE Monogram trash compactor and a GE Profile full-size refrigerator/freezer, while a double sink fitted with commercial-grade hardware completes the professional, refined fit-out.

### Main salon

---

Elegantly appointed and designed for both relaxation and entertainment, the main salon features a KitchenAid ice maker alongside a KitchenAid temperature-controlled wine cooler to ensure beverages are kept at their ideal serving temperature. Audiovisual enjoyment is delivered through a Samsung flat screen 3D HDTV, complemented by a Sony Blu-Ray player and a Direct TV HD DVR, all managed by a Bose head unit and enveloped in Bose surround sound via ten Cube speakers. A CCTV security system with a QSee DVR recorder provides discreet monitoring for added assurance, while communication needs are met by an Icom IC-M504 VHF. Ship systems are conveniently at your command with Tank Tender monitoring and an Onan generator equipped with two start/stop controls.

### Upper helm

---

The upper helm is a refined command suite finished with all-carbon fiber instrument panels that house the electronics, sheltered beneath canvas covers and set within protective Stratta Glass, while plush carpeting underfoot and a highly effective air conditioning system ensure comfort in every season.

Seating is thoughtfully contoured to accommodate twelve to fourteen guests in ergonomic comfort, and twin helms—one positioned forward and an additional station aft—provide superior sightlines for sportfishing, further augmented by an AP24 aft fly helm. Navigation and systems control are exacting: a Simrad AP28 autopilot, Furuno FI-50 rudder controls with toggle-switch operation, a Ritchie Poweramp Plus compass, Caterpillar digital engine interfaces, Naiad Marine stabilizer controls and comprehensive trim tab management deliver precise handling. Two Icom IC-M506 VHF units cover communications, while the visual array consists of two 17-inch Furuno flat-screen color displays running NAVnet 3D, a pair of Furuno color LCD radar monitors, and a Furuno NAVnet 3D solo unit. Night operations and anchoring are fully supported by an ACR Electronics RCL-100 spotlight and a Muir anchor windless.

## Engines and generators

---

The yacht is propelled by twin Caterpillar 3412 E engines, each rated at 1,400 hp, delivering formidable performance with the hallmark reliability expected of this series. Onboard electrical demands are met by two Onan 27 kW generators tied into a Share Load Split System, providing a refined, balanced distribution of power for efficient operation both while underway and when at anchor.

## Other

---

Onboard systems have been carefully selected to enhance both performance and serenity; a DCI water purifier and a GE hot water heater provide modern comforts while a custom-tuned engine exhaust delivers notably smooth and efficient operation. Safety equipment is exemplary, with a Fireboy fire suppression system whose charge is valid through November 2025 and a

Revere Commander 3.0 life raft certified until July 2026. Practical conveniences include spare propellers stored in the engine room and a GE full-size washer and dryer, and mood and functionality are elevated by LED interior lighting and underwater lights that transform the yacht after dark. Power management is supported by a 65-amp battery charger, and a sophisticated security package—featuring multiple cameras, internet connectivity, and a seven-camera recorded 48-hour overlap—provides continuous monitoring and peace of mind.

## Disclaimer

---

The particulars supplied about this yacht have been prepared in good faith; however, their accuracy cannot be assured and no warranty is made regarding the vessel's condition. This yacht is offered subject to prior sale, to changes in price, or to withdrawal from the market without notice. These details are provided by the broker as a courtesy to clients and are not intended to constitute a formal representation of any specific yacht for sale.

# CONTACTS

---

Shestakov Yacht Sales is a brokerage company specializing in the sale and service of yachts worldwide. The company offers services for buying and selling both new and used motor yachts, sailing vessels, and luxury superyachts. They also provide yacht registration, insurance, technical maintenance, crew selection, and charter organization services across the U.S., Canada, Latin America, the Caribbean, and the Bahamas.

The founder and lead broker of the company is Andrey Shestakov, a licensed and certified expert with extensive experience in marine engineering and shipbuilding.

The company has an extensive network of partnerships with major yacht manufacturers worldwide and provides services in multiple languages, including Russian, Ukrainian, Spanish, and English. The office is in Dania Beach, Florida, USA.

For more information and to view available yachts, you can visit the company's official website: <https://shestakovyachtsales.com>

## Contact details

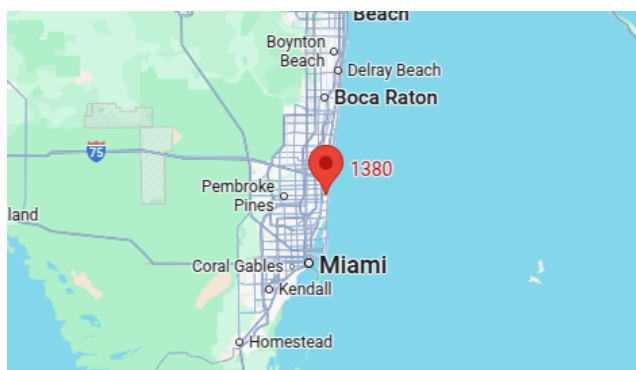
---

**Phone:** +1(954)274-4435

**Email:** [andrey@shestakovyachtsales.com](mailto:andrey@shestakovyachtsales.com)

## Address

---



1380 Weeping Willow Way, Hollywood,  
Florida 33019