

LE.ONE - OVERMARINE GROUP



Builder: [OVERMARINE GROUP](#)

LOA: 72' 0" (22.17 m)

Year Built: 2007

Beam: 18' 0" (5.56 m)

Model: Mangusta 72

Max Draft: 3' 9" (1.15 m)

Price: \$694,147.18 USD Subject to change.

Cruising Speed: 38 Knots (43.73 MPH)

[See full listing on our website](#)

Location: Provincia di La Spezia, Italy

Max Speed: 45 Knots (51.78 MPH)

TABLE OF CONTENTS

OVERVIEW	3
SPECIFICATIONS	5
Basic Information	5
Dimensions	5
Speed, Capacities and Weight	5
Accommodations	5
Hull and Deck Information	6
Engine Information	6
GALLERY	7
DETAILED DESCRIPTION	15
CONTACTS	19

OVERVIEW

The Mangusta 72 condenses Italy's passion for performance and refined craftsmanship into an evocative open yacht that balances thrilling speed with understated luxury. A proud member of Overmarine Group's celebrated Mangusta line, this model captivates with sculpted, aerodynamic profiles and a commanding, sporty presence, offering an exhilarating yet composed experience for owners who prize both high-octane performance and premium onboard living.

The yacht's open-plan deck is conceived for effortless sociability and relaxed days at sea, featuring a wide foredeck sunpad for lounging and an elegant aft lounge that converts into an alfresco dining area beneath a substantial retractable sunshade, while an expansive swim platform aft provides immediate access to the water for swimming and watersports. Inside, a generous salon flows into a fully equipped galley, with tasteful materials and refined finishes that create a calm, sophisticated atmosphere suited to extended Mediterranean cruising. Accommodation is arranged to host six guests in three en-suite cabins, including a forward master suite appointed with plentiful storage and its own private bathroom; the remaining guest accommodations comprise one double and one twin cabin with an additional Pullman berth, each with private facilities. The crew cabin, fitted with double berths, can also be adapted to serve as a flexible fourth guest stateroom when required.

Beneath the sleek lines lies a hull engineered for speed and composure: twin 1500 hp MTU diesel engines driving Arneson surface drives propel the Mangusta 72 to approximately 45 knots, delivering a potent blend of thrust and agile handling. The deep-V planing hull reduces resistance and enhances stability, tempering chop to ensure a smoother ride and heightened comfort underway. In every detail the Mangusta 72 marries sporty intent with luxurious

appointments, embodying the finest traditions of open-air yachting and the art of the voyage.

SPECIFICATIONS

Basic Information

Model Year:
2007

Country:
Italy

Year Built:
2007

Dimensions

LOA:
72' 0" (22.17 m)

Max Draft:
3' 9" (1.15 m)

Beam:
18' 0" (5.56 m)

Speed, Capacities and Weight

Cruise Speed:
38 Knots (43.73 MPH)

Water Capacity:
237.76 Gallons

Max Speed:
45 Knots (51.78 MPH)

Fuel Capacity:
1109.52 Gallons

Accommodations

Total Heads:
3

Crew Cabin:
1

Hull and Deck Information

Hull Material:

Fiberglass and Plastic Yachts

Hull Designer:

N/A

Deck Material:

Fiberglass

Interior Designer:

N/A

Hull Configuration:

N/A

Engine Information

Engines:

2

Engine Type:

Inboard

Manufacturer:

MTU

Fuel Type:

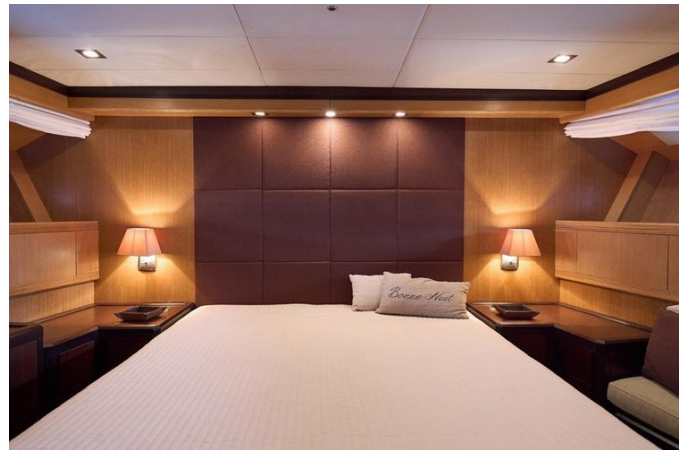
Diesel

GALLERY

















DETAILED DESCRIPTION

Navigation equipment

A meticulously appointed array of navigational instruments sits at the wheel, delivering absolute confidence for long-range voyaging: a Furuno autopilot paired with an accurate Furuno odometer and a traditional Zenith compass work in concert with a Log Navtex NX-700 to keep the vessel informed and steady. A comfortable co-pilot seat allows an experienced crew member to stand watch in comfort during extended passages, while three chartplotters, supplied by a Furuno GPS antenna and supported by a dedicated Furuno GPS unit, present layered, high-resolution positioning. Detection and traffic awareness are handled by a Furuno radar with its matched radar antenna and a Furuno depth sounder that together render the surrounding seascape with precision. Communications are uncompromised by a DSC-capable VHF complemented by a Furuno VHF radio, and command response is exact thanks to electronic engine controls, a rudder angle indicator and a trio of displays—one PLC and two dedicated engine displays—while a full wind station rounds out the suite to provide instantaneous, actionable environmental data.

Staging and technical

Configured for effortless handling and understated comfort, the yacht is fitted with an anchor operated by a Lofrans electric windlass, supplemented by Lofrans bow winches and two Lofrans stern winches to ensure secure, confident mooring. Low-speed maneuvering is delivered with precision by Side Power bow and stern thrusters, and a hydraulic telescopic Besenzoni gangway provides a graceful, reliable boarding solution. Safety systems are comprehensive: automatic and manual bilge pumps with an additional electric bilge pump and a bilge alarm, dual engine alarms, a fire extinguishing system,

and a fume and gas detector, all supported by a clear directional spotlight and a powerful horn. The electrical installation is robust, with battery banks maintained by two battery chargers, a shorepower connector and a voltage rectifier to stabilize supply. Freshwater services include a pressure pump, a cockpit washbasin, a deck shower and a water harbor connector system for easy dockside connection. On deck, refined materials and practical features combine—a teak cockpit with a telescopic table, a generous swim platform with ladder, courtesy lighting and underwater lights, plus a tender garage for secure storage of toys and equipment. The profile is finished with a rollbar and an additional electric winch to broaden handling options.

Domestic facilities onboard

Every element of onboard living has been refined for effortless comfort, with strategically placed 220V outlets and an inverter that reliably powers all domestic systems. Climate control is provided by a blend of inverter-driven air conditioning and dedicated Frigic units, while a heater and a continuous hot water system ensure year-round comfort. Practical conveniences include an electric toilet that discharges to a dedicated black water tank and an onboard waste water treatment plant for responsible disposal. A video camera enhances situational awareness, and extended autonomy is delivered by an Idromar watermaker with a capacity of 130 l/h.

Entertainment

Every aspect of onboard entertainment has been designed for effortless enjoyment at sea: DTV is distributed to four televisions, each rising and concealing itself via a refined TV lift mechanism to preserve the yacht's clean, uncluttered lines. A premium Hi-Fi system with dedicated speakers delivers immersive, high-fidelity audio, complemented by AM/FM radio for additional

listening options. A KVH satellite TV antenna, paired with a satellite decoder, ensures uninterrupted reception, and the complete installation is fully TV ready for immediate use.

Kitchen and appliances

Designed for graceful and effortless life aboard, the galley is anchored by an Electrolux ceramic induction hot plate that delivers precise, responsive heat. A Miele oven and a matching Miele dishwasher elevate both preparation and cleanup, while comprehensive cold storage includes a full refrigerator, a separate freezer and an additional deck refrigerator to keep refreshments easily accessible. An integrated ice maker ensures a continual supply of pristine chilled cubes, completing a refined culinary space suited to every passage and occasion.

Upholstery

Every surface is appointed with carefully selected soft furnishings that elevate comfort and style throughout the yacht; a bimini at the bow delivers instant shade while a purpose-built sunshade unfurls to create cool, sheltered lounging when at anchor. Generous bow cushions invite leisurely sunning forward, and plush stern cushions form an inviting social hub aft. Blackout curtains provide discreet privacy and promote restful nights aboard, complemented by a tailored window cover that protects the glazing when the yacht is at rest. Additional cushions complete the scheme, marrying support and refined elegance across every lounging zone.

Works 2023

During 2023 the yacht underwent a meticulous program of improvements and

upkeep designed to preserve performance and elevate her appearance. Heat exchangers servicing both engines and gearboxes were carefully cleaned to maintain peak reliability and efficiency; new teak was laid across the cockpit, companionway steps and the swimming platform to refresh her decks with a classic, refined finish; and the hull together with the superstructure received a comprehensive polish that restored a luminous, showroom sheen. Practical and atmospheric upgrades included the installation of underwater lighting and a new set of courtesy lights, while fresh batteries were fitted to guarantee dependable onboard power and seamless operation of systems.

CONTACTS

Shestakov Yacht Sales is a brokerage company specializing in the sale and service of yachts worldwide. The company offers services for buying and selling both new and used motor yachts, sailing vessels, and luxury superyachts. They also provide yacht registration, insurance, technical maintenance, crew selection, and charter organization services across the U.S., Canada, Latin America, the Caribbean, and the Bahamas.

The founder and lead broker of the company is Andrey Shestakov, a licensed and certified expert with extensive experience in marine engineering and shipbuilding.

The company has an extensive network of partnerships with major yacht manufacturers worldwide and provides services in multiple languages, including Russian, Ukrainian, Spanish, and English. The office is in Dania Beach, Florida, USA.

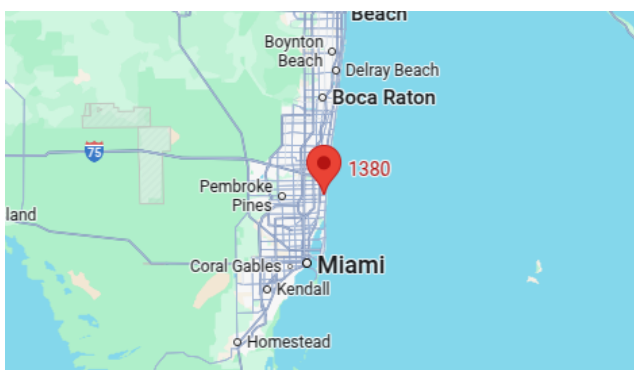
For more information and to view available yachts, you can visit the company's official website: <https://shestakovyachtsales.com>

Contact details

Phone: +1(954)274-4435

Email: andrey@shestakovyachtsales.com

Address



1380 Weeping Willow Way, Hollywood,
Florida 33019