

## PEARL 72 - PEARL MOTOR YACHTS



**Builder:** [PEARL MOTOR YACHTS](#)

**LOA:** 72' 0" (21.95 m)

**Year Built:** 2024

**Beam:** 18' 0" (5.74 m)

**Model:** Pearl 72

**Max Draft:** 18' 4" (5.58 m)

**Price:** \$4,750,000 USD Subject to change.

**Cruising Speed:** 25 Knots (28.77 MPH)

[See full listing on our website](#)

**Location:** Dania Beach, United States

**Max Speed:** 32 Knots (36.83 MPH)

---

# TABLE OF CONTENTS

---

<b>OVERVIEW .....</b>	<b>3</b>
<b>SPECIFICATIONS .....</b>	<b>5</b>
Basic Information .....	5
Dimensions .....	5
Speed, Capacities and Weight .....	5
Accommodations .....	5
Hull and Deck Information .....	6
Engine Information .....	6
<b>GALLERY .....</b>	<b>7</b>
<b>DETAILED DESCRIPTION .....</b>	<b>14</b>
<b>CONTACTS .....</b>	<b>18</b>

# OVERVIEW

---

Trades considered and adaptable financing available

NOT AVAILABLE TO U.S. RESIDENTS WHILE IN U.S. WATERS.

2025 Pearl 72 — Available Immediately

Step aboard the Pearl 72 and step into a new standard of yachting where commanding presence and refined comfort are perfectly balanced. This 72-foot flybridge motor yacht offers expansive volume and contemporary styling conceived for owners who prize both elegant living and spirited performance. Four sumptuous guest staterooms, each with its own en-suite bathroom, are complemented by a separate crew cabin designed to accommodate 2–3, enabling relaxed cruising with full privacy and professional service.

The boat is outfitted for adventure: a versatile tender garage is laid out to carry both a RIB and a Sea Doo Spark, making island exploration and watersports effortless. At anchor the hydraulic swim platform converts into a beach club, and fold-down side terraces along the bulwarks widen the alfresco deck for sun-soaked lounging and panoramic ocean views—perfect for a sport-cruiser lifestyle. Forward, an expansive foredeck lounge invites long hours in the sun, while a hardtop with a tilt-and-slide sunroof brings sky and breeze into the cockpit.

Interior appointments by Kelly Hoppen in the “Indulgence” scheme create a serene, modern ambiance with calm textures, clean lines, and an airy circulation that feels timeless. The Pearl 72 is propelled by reliable MAN diesel engines and kept steady by Seakeeper gyroscopic stabilization, delivering a quiet, composed ride with the acceleration of a performance cruiser and the seakeeping of a bluewater yacht. The signature exterior penned by Bill Dixon Yacht Design marries graceful lines with intelligent hull shaping and balanced naval architecture.

With a private-access forward owner's cabin, a full-beam midship master that redefines space and tranquility, and dedicated arrangements for tender and jet-ski stowage, the Pearl 72 is a contemporary flybridge yacht that melds luxury yacht comfort with sport yacht agility, designed to be lived on and built to thrill. Pricing does not include duty.

# SPECIFICATIONS

---

## Basic Information

---

**Category:**  
Motor yachts

**Year Built:**  
2024

**Model Year:**  
2025

**Country:**  
United States

## Dimensions

---

**LOA:**  
72' 0" (21.95 m)

**Max Draft:**  
18' 4" (5.58 m)

**Beam:**  
18' 0" (5.74 m)

## Speed, Capacities and Weight

---

**Cruise Speed:**  
25 Knots (28.77 MPH)

**Water Capacity:**  
250 Gallons

**Max Speed:**  
32 Knots (36.83 MPH)

**Fuel Capacity:**  
1122 Gallons

## Accommodations

---

**Total Heads:**  
4

**Crew Cabin:**  
1

## Hull and Deck Information

---

**Hull Material:**

Fiberglass and Plastic Yachts

**Hull Designer:**

Bill Dixon

**Deck Material:**

Fiberglass

**Interior Designer:**

Kelly Hoppen

**Hull Configuration:**

N/A

## Engine Information

---

**Engines:**

2

**Engine Type:**

Inboard

**Manufacturer:**

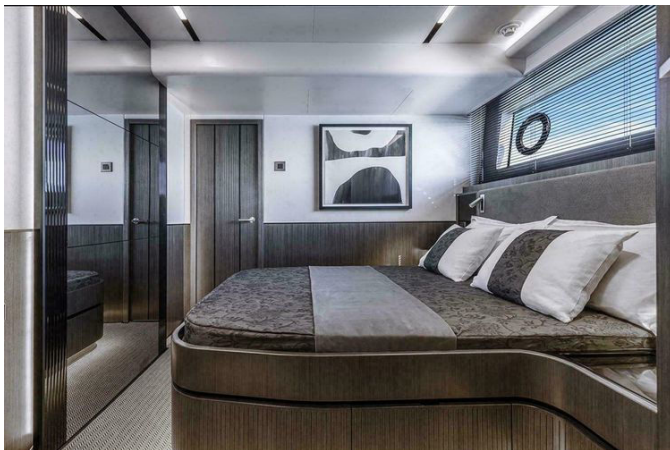
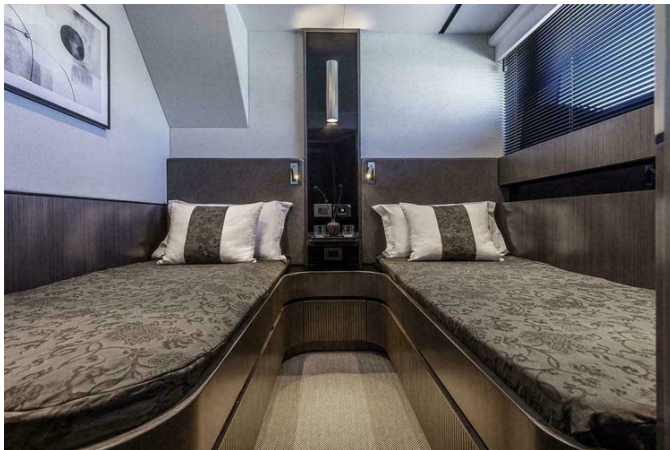
MAN

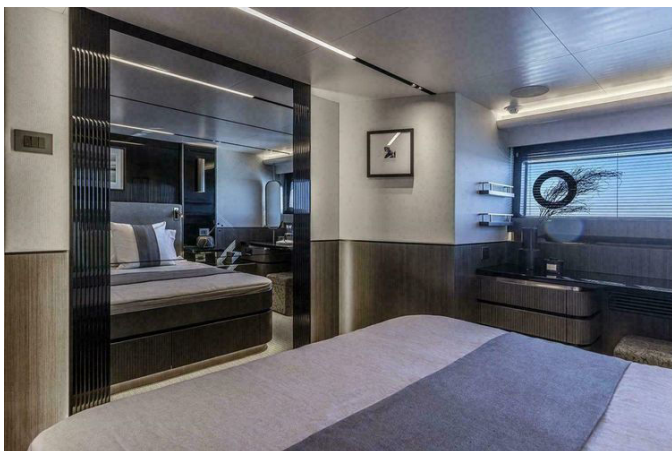
**Fuel Type:**

Diesel

# GALLERY















---

# DETAILED DESCRIPTION

---

## Standard features

---

Conceived by Dixon Yacht Design with interiors by Kelly Hoppen, this yacht marries distinguished pedigree with uncompromising comfort, presenting four en suite double guest cabins complemented by a dedicated crew cabin and a forward master suite with a private entrance that pairs effortlessly with a full beam, midships second master cabin to create a rare dual owner experience; practical elegance continues with a tender and jet ski garage that streamlines every launch, while a welcoming foredeck lounge invites relaxed gatherings whether underway or at anchor.

## Standard equipment

---

Confidence at sea begins with proven systems: a Kohler generator provides robust onboard power, a Side Power bow thruster ensures assured low speed control, and a dedicated crew cabin keeps service discreet and seamless, while navigation is entrusted to integrated Garmin systems; teak decking graces the cockpit and bathing platform for timeless underfoot elegance, entertaining is effortless with a flybridge bar complete with sink, BBQ and fridge, and practicalities are covered by a holding tank system and a Lewmar 24 V anchor winch, with LED TVs throughout elevating downtime and a refined Pearl crockery, cutlery and towel suite underscoring a sense of curated luxury.

## Options

---

Engine and generator upgrades emphasize control and redundancy, with an additional MAN engine display at the flybridge console and a second 20.5 kW Kohler generator, while safety is enhanced by seven Fireboy CO2 alarms

positioned throughout all cabins, the galley and the crew cabin, and a third control station in the cockpit including engine and thruster controls broadens operational flexibility; the hull presents a crisp white finish complemented by coloured detailing across the flybridge, hardtop, foredeck and cockpit to set a purposeful yet refined tone, and inside the Indulgence interior by Kelly Hoppen delivers a sophisticated palette enhanced by wood flooring throughout and curated Kelly Hoppen interior accessories, with light management made effortless by overhead windscreen blinds, forward salon side window blinds and a patio door curtain to ensure privacy and ambience at any hour. On deck, lifestyle is elevated by a hardtop featuring a tilt vane and a retractable sunroof with an electrically operated sun awning aft of the hardtop for shade on demand, complemented by a Bedouin style foredeck bimini, an aft flybridge sunpad with storage beneath and a foredeck table with an electrically operated leg to make social moments effortless; fold down side platforms create an instant beach club, a semi electric side door from the lower helm adds convenience, and launching is streamlined via a Williams tender/jet ski system, while teak is fitted to the flybridge, side decks and forepeak, a side boarding gate simplifies quay access, an additional hull rub rail adds protection, twin aft deck tables with electrically operated legs, Spradling external upholstery and a full set of external covers complete the open air comfort finished with a black waterline and black antifouling for a striking silhouette. Electric and hydraulic systems are specified for global versatility with 120 V 60 Hz outlets to US specification, a Side Power 13 hp stern thruster with upgrades that convert both bow and stern thrusters to hydraulic type, and a 3.8 m Opacmare telescopic passerelle for elegant boarding; the stainless steel patio door is upgraded to electrically operated, an icemaker adds entertaining ease, shore power is handled by two Glendenning cable master units with an upgrade to Boost isolation transformers for clean, stable power, and nighttime presence is defined by three pairs of underwater lights and low level LED lights along the side decks, plus a Lewmar anchor chain counter

and rear docking lights for precision handling. Convenience is further elevated with a Miele washer/dryer, three CCTV cameras, four pop up foredeck lights and electrically operated blinds throughout, and the yacht is pre wired and plumbed for future fitment of a water maker; refrigeration is upgraded with a Vitrofrigo DW 360 300 liters in the galley, with additional Vitrofrigo units in the crew area and at the cockpit wet bar. Navigation and audio visual systems deliver commanding situational awareness and immersive entertainment with a Garmin Fantom 54 open radar scanner, two Garmin GPSMAP 8417 MFD displays with worldwide base map at the lower helm and two Garmin GPSMAP 8417 MFD displays at the flybridge helm, a Garmin AIS 800 with Garmin GPS GA38 antenna, two Garmin GMI 20 marine instrument displays, a GARMIN autopilot Reactor pack displayed on the Garmin helm screens, a GARMIN GHC20 second station autopilot connected to a GARMIN GRF10 rudder feedback sensor, a GARMIN VHF 315i with GHS 11i active speaker at the lower helm and a GARMIN GHS 11i VHF remote handset with active speaker at the upper helm paired to a VHF aerial Pacific LR pro series 2.5 m; under the waterline a GARMIN transducer is complemented by a DST 810 plastic thru hull providing speed, depth and temperature, while a Garmin GPS24XD antennae/receiver and a GARMIN SD card reader support seamless data and charting, and entertainment upgrades include AV enhancements for interior guest cabins and exterior zones with an additional pair of flybridge speakers, a Fusion flybridge amplifier, foredeck speakers and zone control, plus an upgraded 65" salon TV. Climate is assured with tropical spec air conditioning rated at 144,000 BTU suitable for ambient temperatures up to 40 C, with air conditioning vents fitted to the guest heads and dedicated air conditioning for the crew cabin, plus windscreen vents to keep the helm cool and clear. Special options underline seakeeping and service with a Seakeeper SK18 gyro stabilizer for remarkable roll reduction, an Ultramarine 80 kg s/s anchor upgrade for secure holding, a Marco oil change system for clean maintenance and an in port water connection for straightforward shoreside supply.

## Disclaimer

---

The Company presents these vessel details in good faith but cannot guarantee or warrant the accuracy of the information, nor the vessel's condition; buyers should instruct their agents or surveyors to verify any particulars they wish to validate, and this vessel is offered subject to prior sale, price change, or withdrawal without notice.

# CONTACTS

---

Shestakov Yacht Sales is a brokerage company specializing in the sale and service of yachts worldwide. The company offers services for buying and selling both new and used motor yachts, sailing vessels, and luxury superyachts. They also provide yacht registration, insurance, technical maintenance, crew selection, and charter organization services across the U.S., Canada, Latin America, the Caribbean, and the Bahamas.

The founder and lead broker of the company is Andrey Shestakov, a licensed and certified expert with extensive experience in marine engineering and shipbuilding.

The company has an extensive network of partnerships with major yacht manufacturers worldwide and provides services in multiple languages, including Russian, Ukrainian, Spanish, and English. The office is in Dania Beach, Florida, USA.

For more information and to view available yachts, you can visit the company's official website: <https://shestakovyachtsales.com>

## Contact details

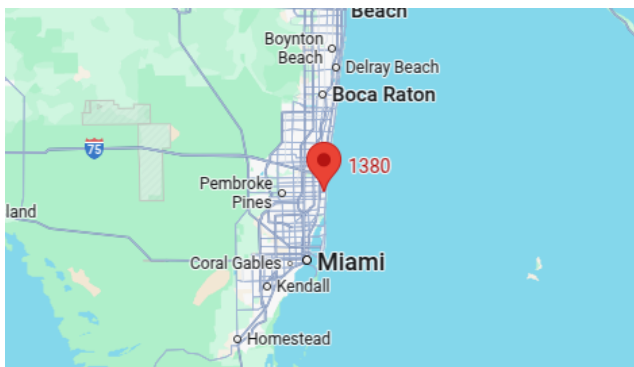
---

**Phone:** +1(954)274-4435

**Email:** [andrey@shestakovyachtsales.com](mailto:andrey@shestakovyachtsales.com)

## Address

---



1380 Weeping Willow Way, Hollywood,  
Florida 33019