

## GRATITUDE - AZIMUT YACHTS



**Builder:** [Azimut Yachts](#)

**LOA:** 72' 0" (22.02 m)

**Year Built:** 2017

**Beam:** 18' 0" (5.52 m)

**Model:** N/A

**Min Draft:** 19' 4" (5.90 m)

**Price:** \$1,699,000 USD Subject to change.

**Max Draft:** 20' 0" (6.10 m)

[See full listing on our website](#)

**Location:** Miami Beach, United States

**Cruising Speed:** 25 Knots (28.77 MPH)

**Max Speed:** 32 Knots (36.83 MPH)

---

# TABLE OF CONTENTS

---

|                                    |           |
|------------------------------------|-----------|
| <b>OVERVIEW .....</b>              | <b>3</b>  |
| <b>SPECIFICATIONS .....</b>        | <b>6</b>  |
| Basic Information .....            | 6         |
| Dimensions .....                   | 6         |
| Speed, Capacities and Weight ..... | 6         |
| Accommodations .....               | 7         |
| Hull and Deck Information .....    | 7         |
| Engine Information .....           | 7         |
| <b>GALLERY .....</b>               | <b>8</b>  |
| <b>DETAILED DESCRIPTION .....</b>  | <b>19</b> |
| <b>CONTACTS .....</b>              | <b>22</b> |

## OVERVIEW

---

Gratitude, a 2017 Azimut 72, is a superbly crafted luxury flybridge motor yacht that marries robust capability with nimble handling and refined style. Equally at home on a sun-dappled day cruise or a longer blue-water passage, she is driven by twin V12 MAN engines and stabilized by zero-speed gyro systems, delivering hushed, confident performance and a steady, comfortable ride in every sea state—an unmistakable performance yacht pedigree.

Conceived for extended cruising, Gratitude is equipped with a watermaker and a hydraulic swim platform, and her expansive flybridge has been arranged as a serene yet sociable refuge for guests. The layout offers multiple lounge, dining, and conversation zones beneath a bright, contemporary interior. The main deck sweeps from an aft salon forward to a centerline galley with a dedicated dining nook and the interior helm station forward; below decks, four staterooms—each appointed with its own ensuite—provide private, restful accommodation. Crew quarters are accessed to port from the transom and comprise two berths with well-considered storage.

The flybridge is the yacht's signature entertaining arena: open and airy, outfitted for casual afternoons or elegant evenings. Appointments include a retractable sunroof, full surround-sound audio, overhead and deck lighting, multiple seating areas, a high-gloss dining table seating eight, an additional forward dinette, and a comprehensive wet bar with sink, refrigerator, ice maker, and a Kenyon grill/cooktop. A custom removable Isinglass enclosure offers protection from bright sun or a brisk breeze, reinforcing the versatility that defines a true flybridge motor yacht.

Aft, the deck forms another welcoming social hub, appointed with a high-gloss dining table, built-in seating, and a raised portside wet bar with sink and refrigerator. Wide sliding doors open to the salon, and a starboard aft docking station equipped with throttles plus bow and stern thruster controls simplifies

close quarters handling—providing bluewater cruiser confidence with the composure of superyacht systems.

The forward deck is equally alluring from dawn through dusk. Generous sun pads invite lounging, while a second social enclave with U shaped seating, a table, and a sun canopy creates a private terrace for conversation and sweeping views, a quintessential Mediterranean inspired cruising touch.

Inside, the salon is luminous and contemporary, framed by sweeping windows and arranged with several seating groups. Fine finishes include hardwood soles, a leather sofa with coffee table, a loveseat, a built in glass cabinet for spirits and stemware, and an entertainment TV. The portside center galley is finished with light quartz countertops and a raised serving ledge, and is fitted with a full height refrigerator, dishwasher, Miele cooktop, microwave/convection oven, and ample storage. To starboard, the dining area features custom bench seating. Forward, the lower helm is equipped with dual Raymarine displays, bow and stern thrusters, primary engine and steering controls, VHF radio, and a full complement of monitoring gauges.

Below deck, four beautifully finished staterooms—each with its own ensuite—deliver the privacy and comfort expected aboard a premium cruising yacht. The full beam owner's suite aft is serene and refined in soft ivory tones accented by rich woodwork. It offers a king berth, built in dresser, full length mirrored wardrobe, oversized windows, a semi transparent mirror TV, nightstands, reading lights, a seating area with table, plush carpeting, and an ensuite with dual sinks, marble counters, a glass walk in shower, a porthole, mirrored cabinetry, and generous under sink storage.

Forward, the VIP stateroom presents a raised queen berth, overhead lockers, twin nightstands, built in shelving, two closets, skylights, a Samsung TV, rectangular hull windows with an opening port, soft carpeting, and an ensuite with a glass walk in shower, marble vanity, mirrored cabinet, and porthole—true comfort for discerning guests. The port guest cabin provides a

full size berth, a large window with an opening port, a roomy wardrobe, nightstand, reading lights, television, and an ensuite with a glass walk in shower complete with a seat and window. To starboard, the guest cabin is arranged with twin side by side berths, a shared nightstand, reading lights, a window with opening port, and an ensuite with a glass walk in shower with seat and window—flexible accommodations ideal for family or friends aboard a planing motor yacht built for style and range.

# SPECIFICATIONS

---

## Basic Information

---

**Category:**  
Motor yachts

**Year Built:**  
2017

**Model Year:**  
2017

**Country:**  
United States

## Dimensions

---

**LOA:**  
72' 0" (22.02 m)

**Beam:**  
18' 0" (5.52 m)

**Min Draft:**  
19' 4" (5.90 m)

**Max Draft:**  
20' 0" (6.10 m)

## Speed, Capacities and Weight

---

**Cruise Speed:**  
25 Knots (28.77 MPH)

**Water Capacity:**  
317 Gallons

**Max Speed:**  
32 Knots (36.83 MPH)

**Fuel Capacity:**  
1189 Gallons

**Gross Tonnage:**  
46 Pounds

## Accommodations

---

**Sleeps:**

8

**Crew Cabin:**

1

**Total Heads:**

4

**Crew Berths:**

2

## Hull and Deck Information

---

**Hull Material:**

Fiberglass and Plastic Yachts

**Hull Designer:**

Stefano Righini

**Deck Material:**

Fiberglass

**Interior Designer:**

Carlo Galeazzi

**Hull Configuration:**

Modified V-Hull

## Engine Information

---

**Engines:**

2

**Fuel Type:**

Diesel

**Manufacturer:**

MAN

# GALLERY



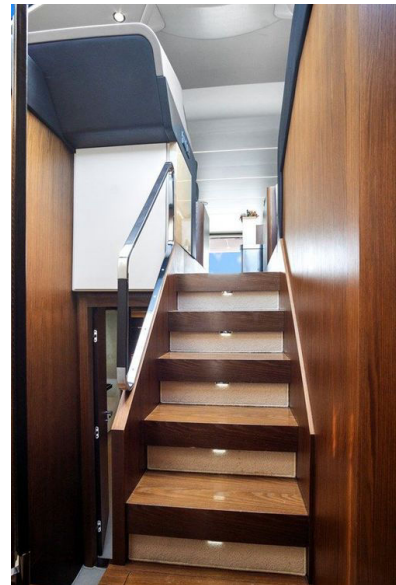


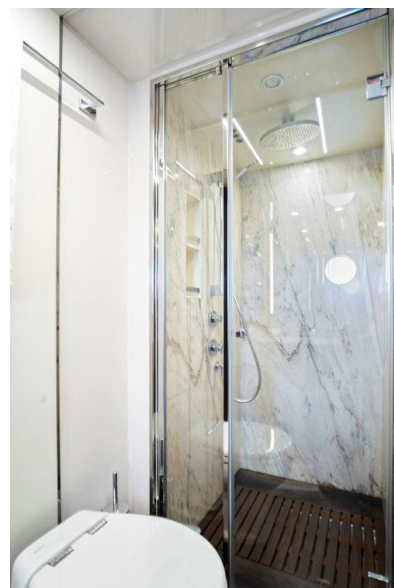




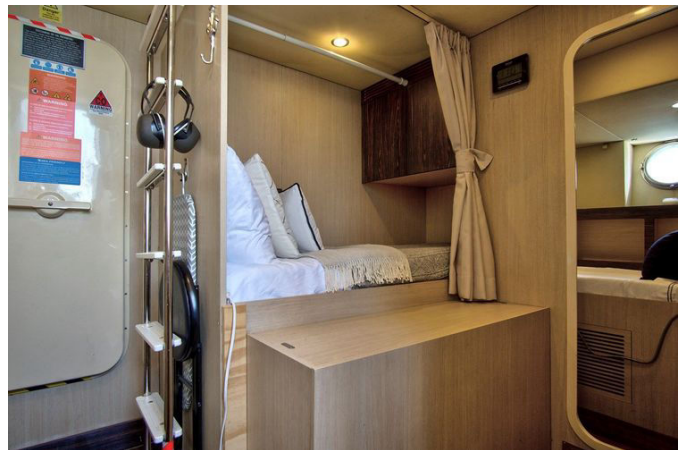
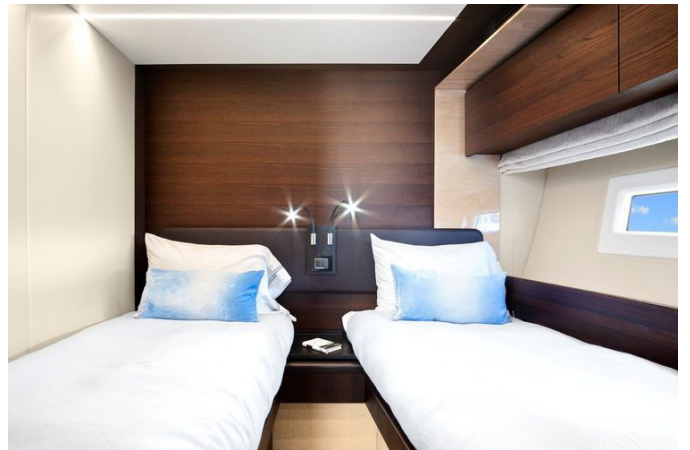


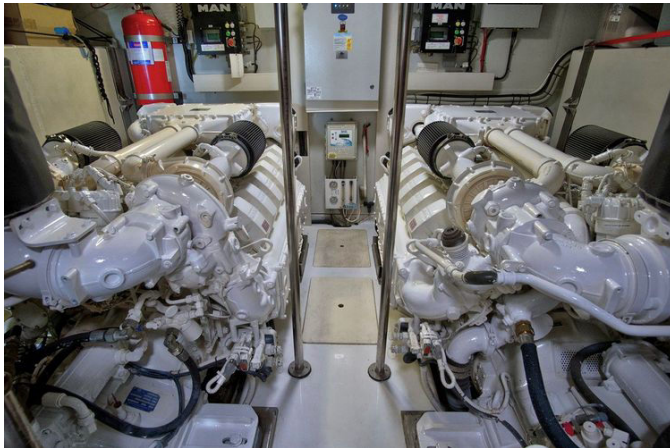












---

# DETAILED DESCRIPTION

---

## 2017 Azimut 72 flybridge

---

Gratitude, a 2017 Azimut 72, is a remarkable yacht that seamlessly blends power, performance, and luxury to create an unforgettable cruising experience; propelled by V12 MAN engines and stabilized by Zero Speed Gyro Stabilization, she provides smooth, confident handling in every sea state whether set for a sunlit day run or an ambitious offshore passage. Fully outfitted for extended cruising, Gratitude is equipped with a watermaker, a hydraulic swim platform, and an expansive flybridge conceived for both relaxation and celebration, where multiple zones for seating, lounging, and dining pair beautifully with an open contemporary interior. The flybridge is a true highlight: large, open, and comprehensively equipped to transition effortlessly from casual afternoons to elegant dinners, crowned by a retractable sunroof and enhanced by a surround sound stereo system, thoughtful overhead and floor lighting, and multiple seating zones; an aft high gloss dining table seats eight, while forward an additional seating area with its own dining table invites intimate conversation, and the complete wet bar—fitted with sink, refrigerator, ice maker, and Kenyon grill/cooktop—makes hosting effortless, with a custom removable Isinglass enclosure that keeps the deck comfortable in brilliant sunshine or a passing shower. On the main aft deck, another welcoming entertaining area awaits with a high gloss dining table and built in seating beside a raised portside wet bar fitted with sink and refrigerator, and sliding glass doors open to the salon while a starboard aft docking station with throttle and bow and stern thruster controls provides confident, convenient maneuvering. Forward, the bow becomes a favorite gathering place by day and by dusk: generous sun pads offer indulgent lounging at the forepeak and a separate zone with U shaped seating, a table,

and a sun canopy creates an inviting perch to socialize and savor the view. Inside, the main salon is bright, modern, and elegantly appointed, framed by panoramic windows and arranged with multiple seating areas where hardwood floors lead past a leather sofa with coffee table and a loveseat to a built-in glass cabinet for liquor and stemware accompanied by a TV for effortless entertaining; the center galley to port is finished with light quartz countertops and a raised service ledge and is fully equipped with a full-size refrigerator, dishwasher, Miele cooktop, microwave/convection oven, and abundant storage, while the starboard dining area features custom bench seating and forward the lower helm presents dual Raymarine displays, bow and stern thrusters, precise steering controls, a VHF radio, and a full suite of monitoring gauges. Below deck, four exquisitely finished staterooms—each with an ensuite bath—provide exceptional comfort and privacy: the full-beam master located aft is dressed in soft ivory tones with rich wood accents and offers a king-size bed, built-in dresser, a full-length mirrored closet, large windows, a semi-transparent mirror TV, nightstands with reading lights, a seating area with table, and plush carpeting, while its ensuite bath is appointed with double sinks, marble counters, a glass walk-in shower, a porthole window, mirrored storage cabinets, and additional under-sink storage; the forward VIP presents a raised queen bed, overhead storage, dual nightstands, built-in shelving, two closets, skylights, a Samsung TV, rectangular windows with a porthole, soft carpeting, and an ensuite with a glass walk-in shower, marble counter, mirrored cabinet, and porthole; the portside guest cabin provides a full-size bed, a large window with porthole, a spacious closet, nightstand, reading lights, a television, and an ensuite with a glass walk-in shower featuring a seat and window; to starboard, the guest cabin offers twin side-by-side beds, a shared nightstand, reading lights, a window with porthole, and an ensuite bath with a glass walk-in shower with seat and window. Thoughtful highlights, services, and upgrades underscore her turn-key appeal and meticulous maintenance, including an LED-lit name,

AGM batteries and an upgraded amplifier feeding the surround sound system, fire system certification for peace of mind, a Glendenning motor replacement, hull buffed and waxed, AC raw water pump service, fresh bottom paint and Propspeed, a watermaker, new propellers, the four stateroom, four ensuite layout, a glass display cabinet in the main salon, a center galley configuration with a raised serving bar, a master stateroom with king bed, mirrored front TV and seating area with table, two exterior wet bars on the flybridge and the main level aft deck, expansive outdoor entertaining areas and abundant exterior storage on the flybridge and at the aft wet bars, plus a hydraulic swim platform and dedicated crew quarters accessed portside from the aft with two separated twin beds, a bath, and generous storage; meticulously specified and beautifully kept, Gratitude makes every mile underway feel as effortless as it is unforgettable.

# CONTACTS

---

Shestakov Yacht Sales is a brokerage company specializing in the sale and service of yachts worldwide. The company offers services for buying and selling both new and used motor yachts, sailing vessels, and luxury superyachts. They also provide yacht registration, insurance, technical maintenance, crew selection, and charter organization services across the U.S., Canada, Latin America, the Caribbean, and the Bahamas.

The founder and lead broker of the company is Andrey Shestakov, a licensed and certified expert with extensive experience in marine engineering and shipbuilding.

The company has an extensive network of partnerships with major yacht manufacturers worldwide and provides services in multiple languages, including Russian, Ukrainian, Spanish, and English. The office is in Dania Beach, Florida, USA.

For more information and to view available yachts, you can visit the company's official website: <https://shestakovyachtsales.com>

## Contact details

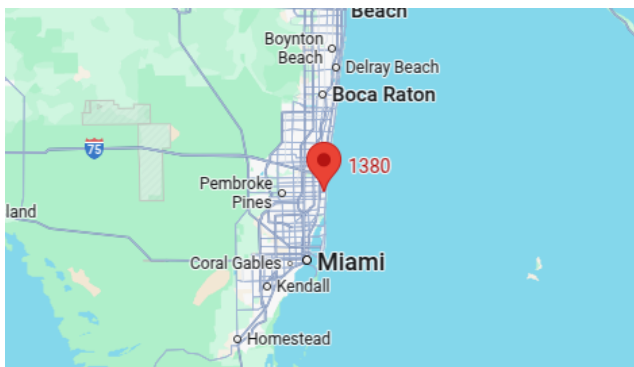
---

**Phone:** +1(954)274-4435

**Email:** [andrey@shestakovyachtsales.com](mailto:andrey@shestakovyachtsales.com)

## Address

---



1380 Weeping Willow Way, Hollywood,  
Florida 33019