



DOVETAIL - TRUMPY



Builder: [TRUMPY](#)

LOA: 72' 0" (21.95 m)

Year Built: 1972

Beam: 18' 0" (5.49 m)

Model: Houseboat

Cruising Speed: 12 Knots (13.81 MPH)

Price: \$995,000 USD Subject to change.

[See full listing on our website](#)

Location: Palm Beach, United States

Max Speed: 14 Knots (16.11 MPH)

If you would like to buy a yacht **DOVETAIL - TRUMPY** or would like help answering any questions concerning purchasing, selling, or chartering a yacht, please call **+1(954)274-4435** or click here on <https://shestakovyachtsales.com>

TABLE OF CONTENTS

OVERVIEW

SPECIFICATIONS

Basic Information

Dimensions

Speed, Capacities and Weight

Accommodations

Hull and Deck Information

Engine Information

GALLERY

CONTACTS

3

5

5

5

5

6

6

7

14

OVERVIEW

Inviting offers. Note: DOVETAIL is presently stationed in South Florida for her annual maintenance period (July – September 2024) – an ideal opportunity for a comprehensive hull examination! A bit of background... DOVETAIL, originally known as GERIFAY, was crafted by John Trumpy and Sons as contract #446 in 1972 in Annapolis, Maryland. She was among the final "Houseboat" models produced and served as the Committee Boat for the 1974 America's Cup Races in Newport, RI. DOVETAIL features an enclosed pilothouse and a spacious, full-width galley on the main deck for convenient access. Her dimensions include an overall length of 72' / 21.95m, a beam of 18' / 5.49m, and a draft of 4'5" / 1.35m, with a gross tonnage of 69 and a net tonnage of 55. Her hull is masterfully constructed with steam-bent oak framing and double-planked mahogany—3/8-inch inner and 3/4-inch outer mahogany planks, sealed with marine-grade 5200. DOVETAIL is a timeless yacht, impeccably maintained and equipped with modern systems. She underwent a complete restoration and refit in Rhode Island from 2017 to 2020, with investments exceeding \$1 million: Recent maintenance highlights for DOVETAIL: 2017-2018: A significant refit was conducted by the renowned Trumpy specialists at McMillen Yachts in Portsmouth, Rhode Island. Over half of the bottom was re-planked below the waterline, bronze thru-hull valves were replaced, and topsides were wooded. She was repowered with twin Cummins QSM-11 650 hp diesel engines, and the engine room was fully refitted with new gears, shafts, props, and a new exhaust system. The electric service was upgraded to 100-amp with a 24vDC battery system. All other systems were refurbished or serviced, including Naiad 254 hydraulic stabilizers, a hydraulic bow thruster, a Spectra watermaker, Cruisair Air Conditioning, and a windlass. 2018-2019: Further mechanical and cosmetic enhancements were made in Stuart, FL, and Portsmouth, RI, including a newly redesigned galley and a complete hull repaint in 2019 with white Alexseal. McMillen Yachts also replaced the bottom planking around the

rudder ports and installed new steering engineering. 2020 & 2021: DOVETAIL's owners enjoyed cruising in New England during the summers and Florida & the Bahamas in the winters, with continuous maintenance to preserve her immaculate condition. 2022: A complete renewal of all varnish, both inside and out, was undertaken—stripped to bare wood and six coats applied. 2023: New teak decks were installed on the aft deck, replacing the previously painted non-skid surface. The engines and mechanical systems received full servicing in November 2023. 2024: Fresh varnish was applied inside and out in January and February, and the air conditioning was fully serviced in March. From mid-July through September 2024, DOVETAIL was hauled out for a full shipyard period, with the bottom thoroughly cleaned and freshly painted, the "worm shoe" replaced, caulking renewed, propellers fully serviced, and an Arid Bilge System installed. An additional two coats of varnish were applied to the interior and exterior. As of early July 2024, engine hours are approximately 2200 on both the port and starboard engines. Generator hours on the twin Northern Lights 25 KW generators are 3800 on the port generator and 1700 on the starboard generator. The complete and up-to-date maintenance log is available on board DOVETAIL.

SPECIFICATIONS

Basic Information

Category:
Motor yachts

Year Built:
1972

Sub category:
Motor Yacht

Country:
United States

Model Year:
1972

Dimensions

LOA:
72' 0" (21.95 m)

Beam:
18' 0" (5.49 m)

Speed, Capacities and Weight

Cruise Speed:
12 Knots (13.81 MPH)

Water Capacity:
570 Gallons

Max Speed:
14 Knots (16.11 MPH)

Fuel Capacity:
1500 Gallons

Accommodations

Total Heads:
5

Hull and Deck Information

Hull Material:
Wooden Yachts

Hull Designer:
N/A

Deck Material:
Wood

Interior Designer:
N/A

Hull Configuration:
N/A

Engine Information

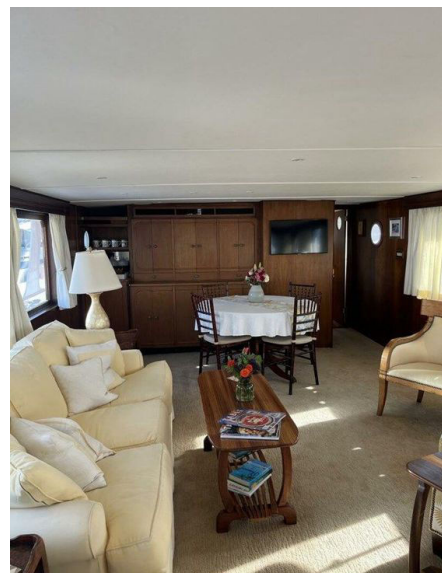
Engines:
2

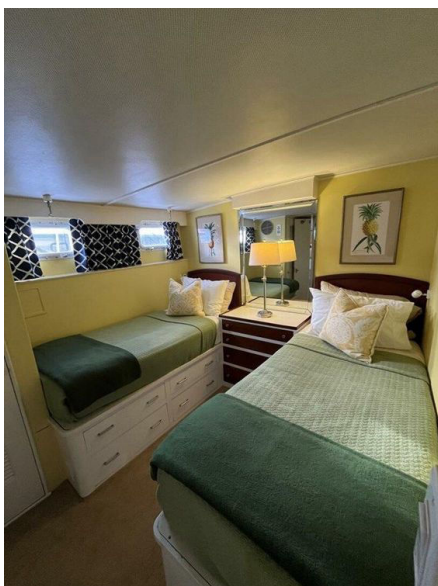
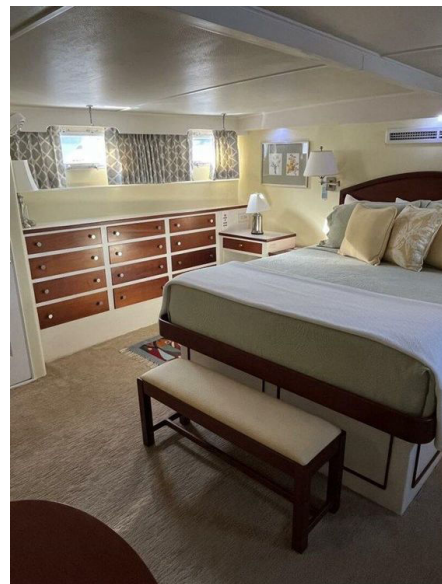
Engine Type:
Inboard

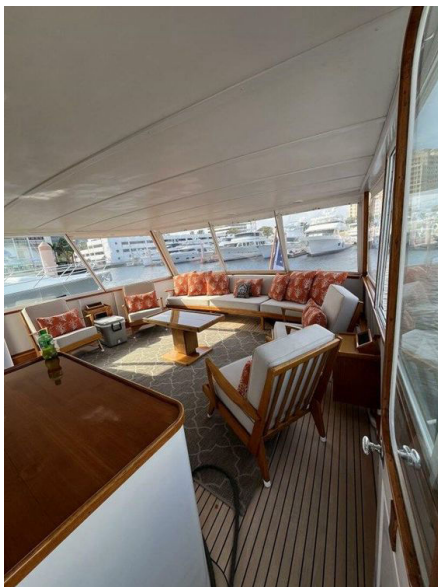
Manufacturer:
Cummins

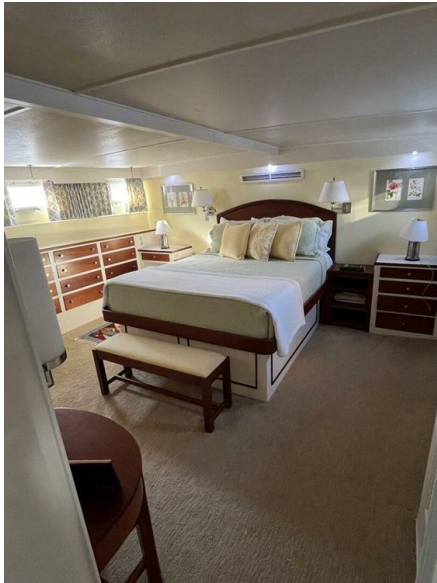
Fuel Type:
Diesel

GALLERY

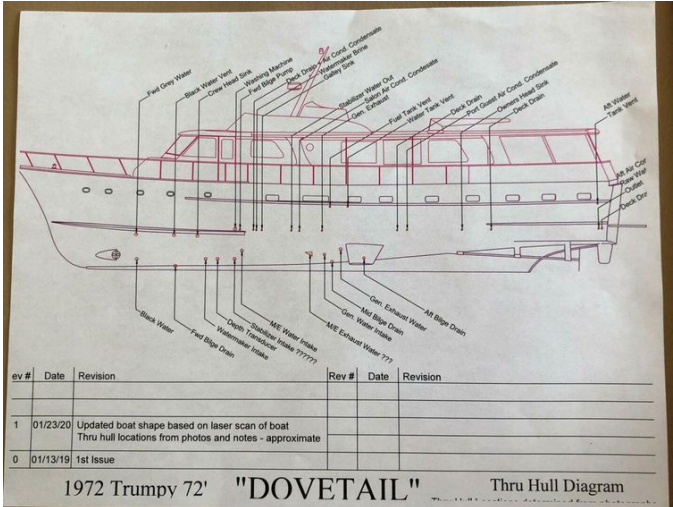














CONTACTS

Shestakov Yacht Sales is a brokerage company specializing in the sale and service of yachts worldwide. The company offers services for buying and selling both new and used motor yachts, sailing vessels, and luxury superyachts. They also provide yacht registration, insurance, technical maintenance, crew selection, and charter organization services across the U.S., Canada, Latin America, the Caribbean, and the Bahamas.

The founder and lead broker of the company is Andrey Shestakov, a licensed and certified expert with extensive experience in marine engineering and shipbuilding.

The company has an extensive network of partnerships with major yacht manufacturers worldwide and provides services in multiple languages, including Russian, Ukrainian, Spanish, and English. The office is in Dania Beach, Florida, USA.

For more information and to view available yachts, you can visit the company's official website: <https://shestakovyachtsales.com>

Contact details

Phone: +1(954)274-4435

Email: andrey@shestakovyachtsales.com

Address



1380 Weeping Willow Way, Hollywood,
Florida 33019