

## SHAKINA - HORIZON YACHTS



**Builder:** [Horizon Yachts](#)

**LOA:** 73' 0" (22.45 m)

**Year Built:** 2013

**Beam:** 20' 0" (6.25 m)

**Model:** Motor Yacht

**Max Draft:** 16' 11" (5.17 m)

**Price:** \$1,889,778.65 USD Subject to change.

**Cruising Speed:** 10 Knots (11.51 MPH)

[See full listing on our website](#)

**Location:** Auckland, New Zealand

**Max Speed:** 20 Knots (23.02 MPH)

---

# TABLE OF CONTENTS

---

<b>OVERVIEW .....</b>	<b>3</b>
<b>SPECIFICATIONS .....</b>	<b>5</b>
Basic Information .....	5
Dimensions .....	5
Speed, Capacities and Weight .....	5
Accommodations .....	6
Hull and Deck Information .....	6
Engine Information .....	6
<b>GALLERY .....</b>	<b>7</b>
<b>DETAILED DESCRIPTION .....</b>	<b>15</b>
<b>CONTACTS .....</b>	<b>16</b>

## OVERVIEW

---

YM proudly introduces SHAKINA, a 2013 Horizon V74 Skylounge Motor Yacht, custom-specified with virtually every upgrade and available now for immediate delivery ex Auckland, New Zealand.

This pristine V74 offers remarkable interior volume thanks to her semi-displacement hull, with an LOA of 73' 8" and a broad 20' 6" beam. Twin 1,100 HP MAN V10 shaft-drive diesels deliver impressive efficiency and spirited performance. Pair Greg Marshall's highly efficient hull design with a 5,754-litre fuel capacity and you have a long-range, high-speed blue-water cruising platform.

Designed to reach distant horizons with ease, SHAKINA can operate with the generators off except when heavy A/C or cooking loads are needed, conserving fuel on extended passages. The interior showcases impeccable craftsmanship: timeless satin-finish walnut and oak joinery, supple leathers, premium European appliances, and refined entertainment systems—true luxury yacht caliber.

Built to exceed DNV Classification, the Horizon V74 combines lightweight construction with exceptional strength and space, often drawing comparisons to the interior volume of an 85-foot motor yacht. Three staterooms with ensuite bathrooms plus versatile crew quarters (ideal as a teenager's retreat) reinforce that big-boat feel for an owner-operator or crewed program.

The main deck flows seamlessly from the generous forward country galley to the central formal dining area and into the relaxed saloon with wet bar, all opening to the aft deck through large bifold stainless-steel doors. Oversized windows, signature portlights, and a saloon skylight bathe the interior in natural light. Aircraft-style pilothouse doors to port and starboard usher in sea breezes and grant effortless access to the full walkaround side decks and the foredeck sunpad—the perfect sunset perch.

Interior and exterior stairs ascend to the enclosed skylounge helm with day head. Step outside to a substantial boat deck that comfortably carries a 4.6 m Custom Swift RIB with 90 hp Suzuki outboard. A custom Southern Stainless teppanyaki grill anchors a superb alfresco entertaining zone with abundant storage, a flush sink with hot/cold mixer, and refrigeration.

Acoustic insulation is exceptional: at cruise there's only a soft, distant hum—even in the full-beam owner's suite—enhancing the sense of voyage without noise or vibration. At anchor, hull-slap is notably absent, ensuring serene nights for light sleepers.

Meticulously maintained and superbly equipped, SHAKINA is a standout Horizon V74 skylounge motor yacht—an elegant flybridge yacht and long-range bluewater cruiser—lying in Auckland and ready to go.

---

# SPECIFICATIONS

---

## Basic Information

---

**Category:**  
Motor yachts

**Year Built:**  
2013

**Model Year:**  
2013

**Country:**  
New Zealand

## Dimensions

---

**LOA:**  
73' 0" (22.45 m)

**Max Draft:**  
16' 11" (5.17 m)

**Beam:**  
20' 0" (6.25 m)

## Speed, Capacities and Weight

---

**Cruise Speed:**  
10 Knots (11.51 MPH)

**Water Capacity:**  
356.63 Gallons

**Max Speed:**  
20 Knots (23.02 MPH)

**Fuel Capacity:**  
1520.05 Gallons

## Accommodations

---

**Sleeps:**

3

**Crew Berths:**

1

**Crew Cabin:**

1

## Hull and Deck Information

---

**Hull Material:**

Fiberglass and Plastic Yachts

**Hull Designer:**

Horizon Yachts

**Deck Material:**

Fiberglass

**Interior Designer:**

N/A

**Hull Configuration:**

N/A

## Engine Information

---

**Engines:**

2

**Engine Type:**

Inboard

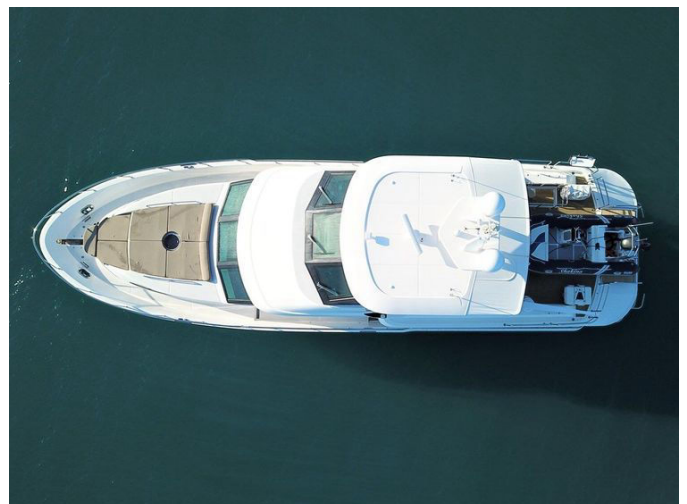
**Manufacturer:**

MAN

**Fuel Type:**

Diesel

# GALLERY





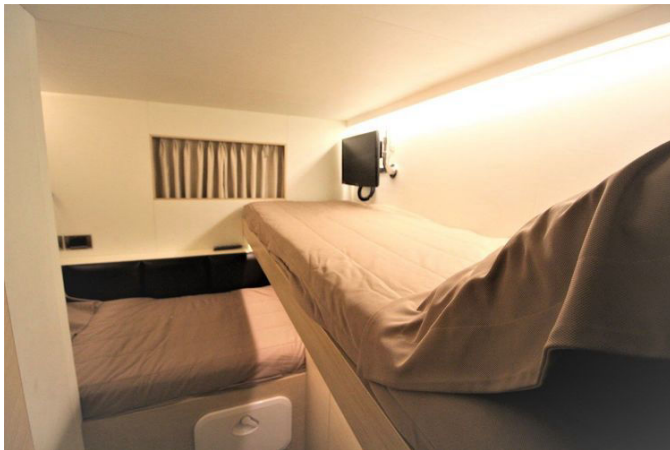












## DETAILED DESCRIPTION

---

### 2013 74' Horizon V74 motor yacht 'Shakina'

---

Crafted in 2013 by Horizon, the 74-foot V74 motor yacht 'Shakina' marries the shipyard's celebrated engineering with generous volume, long-range composure, and a contemporary profile. Her 74-foot length affords expansive deck areas and a convivial, open-flow layout, while the V74 platform is acclaimed for its reassuring seakeeping, efficient cruising, and intelligent use of beam. 'Shakina' invites effortless family voyages and sophisticated entertaining, blending refined craftsmanship with the confidence that comes from a pedigreed builder.

# CONTACTS

---

Shestakov Yacht Sales is a brokerage company specializing in the sale and service of yachts worldwide. The company offers services for buying and selling both new and used motor yachts, sailing vessels, and luxury superyachts. They also provide yacht registration, insurance, technical maintenance, crew selection, and charter organization services across the U.S., Canada, Latin America, the Caribbean, and the Bahamas.

The founder and lead broker of the company is Andrey Shestakov, a licensed and certified expert with extensive experience in marine engineering and shipbuilding.

The company has an extensive network of partnerships with major yacht manufacturers worldwide and provides services in multiple languages, including Russian, Ukrainian, Spanish, and English. The office is in Dania Beach, Florida, USA.

For more information and to view available yachts, you can visit the company's official website: <https://shestakovyachtsales.com>

## Contact details

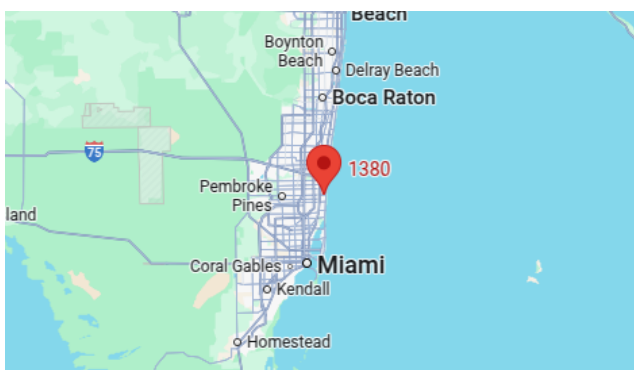
---

**Phone:** +1(954)274-4435

**Email:** [andrey@shestakovyachtsales.com](mailto:andrey@shestakovyachtsales.com)

## Address

---



1380 Weeping Willow Way, Hollywood,  
Florida 33019