

FREEDOM 2 - PERSHING



Builder: [PERSHING](#)

LOA: 73' 0" (22.28 m)

Year Built: 2010

Beam: 18' 0" (5.52 m)

Model: 72

Min Draft: 15' 7" (4.75 m)

Price: \$1,290,000 USD Subject to change.

Cruising Speed: 25 Knots (28.77 MPH)

[See full listing on our website](#)

Location: Fort Lauderdale, United States

Max Speed: 45 Knots (51.78 MPH)

TABLE OF CONTENTS

OVERVIEW 3

SPECIFICATIONS 4

 Basic Information 4

 Dimensions 4

 Speed, Capacities and Weight 5

 Accommodations 5

 Hull and Deck Information 5

 Engine Information 6

GALLERY 7

DETAILED DESCRIPTION 11

CONTACTS 16

OVERVIEW

The 2010 72' Pershing FREEDOM 2 exemplifies Italian craftsmanship, where lavish comfort, blistering pace, and smart efficiency converge in a sinuous, high-performance profile. Offered for sale and resting at the current boat location, her unmistakable Pershing silhouette and polished silver exterior announce a vessel built for both presence and performance. Propelled by twin MTU engines mated to Arneson surface drives, FREEDOM 2 delivers exhilarating performance with a maximum speed of 45 knots while maintaining the refinement expected of a luxury sport yacht. Her interior unfolds in a modern, airy arrangement: a sumptuous salon crowned by an electric sunroof, a fully equipped galley, and sleeping quarters that welcome up to six guests across three tastefully appointed staterooms. The aft deck is crafted for leisure and entertaining, with ample seating, dedicated sunbathing areas, a hydraulic swim platform, and a garage for water toys, promising hours of effortless enjoyment on the water.

Key Features:

Innovative Design and Layout: Sliding hard top and retractable glass partition

Performance and Engineering: Top speed of 45 knots with Arneson surface drives and twin MTU engines

Luxurious Accommodations: Spacious cabins and elegant interior design accommodating six guests in three staterooms

Notable Amenities: Ample sunbathing areas, generous aft seating, hydraulic swim platform, and garage for water toys

SPECIFICATIONS

Basic Information

Category:
Motor yachts

Year Built:
2010

Sub category:
Cruisers

Country:
United States

Model Year:
2010

Dimensions

LOA:
73' 0" (22.28 m)

Beam:
18' 0" (5.52 m)

Min Draft:
15' 7" (4.75 m)

Speed, Capacities and Weight

Cruise Speed:

25 Knots (28.77 MPH)

Water Capacity:

261.53 Gallons

Max Speed:

45 Knots (51.78 MPH)

Fuel Capacity:

1188.77 Gallons

Gross Tonnage:

61.6 Pounds

Accommodations

Sleeps:

6

Crew Cabin:

1

Total Heads:

3

Crew Berths:

2

Hull and Deck Information

Hull Material:

Fiberglass and Plastic Yachts

Hull Designer:

Pershing

Deck Material:

Fiberglass

Interior Designer:

Pershing

Hull Configuration:

Deep Vee

Engine Information

Engines:

2

Fuel Type:

Diesel

Manufacturer:

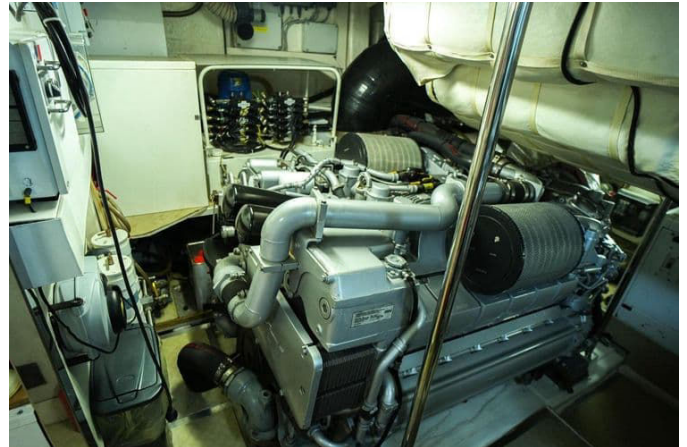
MTU

GALLERY









DETAILED DESCRIPTION

Accommodations

This luxurious yacht offers exquisite accommodations designed to provide comfort and privacy for all guests on board, featuring three beautifully appointed guest cabins each with en-suite facilities and individual character. The master stateroom is a full-beam amidships sanctuary offering generous space and seclusion, complete with its own en-suite for the ultimate in onboard luxury, while the forward VIP cabin also provides en-suite amenities to create a refined private retreat. A port-side guest cabin with twin berths and its own en-suite makes hosting additional guests effortless, and the well-conceived crew quarters comfortably accommodate up to two crew members with a bunk and a head, ensuring the team can perform their duties efficiently while enjoying a comfortable place to rest.

Machinery

The yacht is propelled by a robust and efficient machinery package centered on two MTU 12 V 2000 M93 engines, each a twelve-cylinder V configuration delivering 1823 mhp (1340 kW) at 2450 rpm, a combination that assures powerful and reliable performance; these engines have been meticulously maintained and show 1,150 hours of operation, reflecting excellent condition and readiness for continued use. Performance and handling are further enhanced by the ASD 14L Arneson Surface Drive transmission system, whose precise engineering complements the engines to provide superior speed, responsiveness and a smooth cruising experience.

Generators & auxiliary systems

The yacht is equipped with a comprehensive set of generators and auxiliary systems to ensure seamless operation and onboard comfort, featuring a Kohler 27 EFOZD generator with 7,000 hours of reliable service alongside a FISCHER PANDA generator with only 800 hours, providing respective outputs of 20 kW and 10.2 kW at 230 V single-phase and 50 Hz to cover all electrical loads. Supporting the electrical system are two battery chargers, one rated at 180 Ah with a 12 V output and the other at 100 Ah with a 12 V output, delivering efficient battery maintenance and a dependable power supply for all onboard amenities.

Ancillary equipment

The yacht carries a comprehensive array of ancillary equipment chosen to enhance safety, convenience and maneuverability, including a total of five bilge pumps strategically placed throughout the vessel—two in the engine room, one in the owner's corridor, one in the owner's bathroom and one in the crew cabin—ensuring efficient water management in all critical areas.

Complementing this are a seawater pump and a fresh water maker to support extended cruising and a continuous supply of potable water, while both bow and stern thrusters provide exceptional low-speed control and precision during docking and tight maneuvers.

Safety and security equipment

The yacht is outfitted with essential safety and security equipment to protect everyone on board, including an Emergency Position Indicating Radio Beacon (EPIRB) for rapid alerting of search and rescue services in case of distress, a full complement of lifejackets to provide personal flotation for all passengers and

crew, and a liferaft offering a reliable means of evacuation if required, together forming a comprehensive safety package that allows guests to enjoy their time at sea with confidence.

Communication equipment

The yacht features essential communication equipment to ensure reliable connectivity and safety at sea, prominently including a VHF radio which is indispensable for maintaining contact with other vessels and maritime authorities, coordinating navigation, receiving weather updates and enabling swift communication during any emergency, thereby reinforcing the yacht's operational efficiency and the peace of mind of all on board.

Navigation equipment

The yacht is fitted with advanced Furuno navigation equipment to deliver precise and reliable guidance on the open seas, combining a GPS for accurate positioning, a chartplotter for detailed mapping and route planning and radar for detecting other vessels and obstacles even in reduced visibility, all integrated to provide comprehensive navigational support that enhances safety and confidence during every passage.

Deck equipment

The yacht boasts an impressive suite of deck equipment designed for relaxation and functionality, with a double sun bed positioned above the aft garage creating a sumptuous sunning area, an expansive L-shaped lounge to starboard with a teak table ideal for alfresco dining and socializing and a barbecue station that enhances outdoor entertaining. The cockpit prioritizes comfort with plush cushions, a convenient cockpit shower and a teak cockpit

table set into beautifully crafted teak decking, while the foredeck features a spacious anchor locker with a moulded step for easy access and efficient anchor handling. The versatile garage accommodates a tender or a jet ski, a hydraulic gangway facilitates effortless boarding, and elegant teak sidedecks ensure safe and graceful movement around the yacht.

Audio / visual entertainment

The yacht is fitted with a state-of-the-art audio and visual entertainment system to enrich every moment onboard, anchored by a Deunon sound system that delivers crystal-clear, immersive audio for music and gatherings and complemented by Samsung TVs placed throughout the yacht to provide high-definition viewing for movies, shows and presentations, together creating a refined entertainment environment that enhances the pleasure of life at sea.

Galley & domestic equipment

The yacht's fully equipped galley and domestic systems are arranged to meet all culinary and household needs with ease, featuring a spacious refrigerator for ample provision storage, a high-quality oven for preparing gourmet meals and a microwave oven for quick, convenient service, while a washing machine ensures laundry can be managed effortlessly during extended voyages, together creating the comforts of home at sea.

Tender and watersport equipment

The yacht is supplied with a versatile selection of tender and watersport equipment to maximize onboard enjoyment, including a 3.20-meter Williams tender that provides reliable transport to shore and the perfect platform for exploring secluded coves, a banana boat designed for four people to deliver

exhilarating rides and memorable fun, and two paddleboards that invite tranquil moments of exploration on calm waters, ensuring activities to suit both high-energy and leisurely preferences.

November 2023-2024 maintenance

During the extensive November 2023–2024 maintenance program the yacht received a complete painting refresh to revitalize its exterior, comprehensive electrical maintenance and repairs to ensure flawless system operation, and full hydraulic service including pipe replacements, tank work and oil replenishment to guarantee optimal performance. The Arneson system was fully serviced with complete maintenance and oil changes and the rudder pump was maintained and repaired to preserve precise steering, while the main engines underwent oil changes and routine service and both fuel and wastewater tanks were opened and thoroughly cleaned with all internal odor filters replaced to maintain a fresh onboard environment. The tender and the passarella received full refits and the foreside windlass was removed for maintenance and repair to ensure reliable anchoring operations; the only remaining tasks are the repair of the non-working water maker and the rudder indicator, which are scheduled to be completed this winter.

CONTACTS

Shestakov Yacht Sales is a brokerage company specializing in the sale and service of yachts worldwide. The company offers services for buying and selling both new and used motor yachts, sailing vessels, and luxury superyachts. They also provide yacht registration, insurance, technical maintenance, crew selection, and charter organization services across the U.S., Canada, Latin America, the Caribbean, and the Bahamas.

The founder and lead broker of the company is Andrey Shestakov, a licensed and certified expert with extensive experience in marine engineering and shipbuilding.

The company has an extensive network of partnerships with major yacht manufacturers worldwide and provides services in multiple languages, including Russian, Ukrainian, Spanish, and English. The office is in Dania Beach, Florida, USA.

For more information and to view available yachts, you can visit the company's official website: <https://shestakovyachtsales.com>

Contact details

Phone: +1(954)274-4435

Email: andrey@shestakovyachtsales.com

Address



1380 Weeping Willow Way, Hollywood,
Florida 33019