

CELEBRATE LIFE - AZIMUT YACHTS



Builder: [AZIMUT YACHTS](#)

LOA: 74' 0" (22.64 m)

Year Built: 2022

Beam: 18' 0" (5.60 m)

Model: 72 Fly

Max Draft: 6' 0" (1.82 m)

Price: \$3,465,247.67 USD Subject to change.

Cruising Speed: 26 Knots (29.92 MPH)

[See full listing on our website](#)

Location: Mandraki, Greece

Max Speed: 32 Knots (36.83 MPH)

TABLE OF CONTENTS

OVERVIEW 3

SPECIFICATIONS 5

 Basic Information 5

 Dimensions 5

 Speed, Capacities and Weight 5

 Accommodations 6

 Hull and Deck Information 6

 Engine Information 6

GALLERY 7

DETAILED DESCRIPTION 13

CONTACTS 19

OVERVIEW

Experience Unmatched Luxury on the Seas: 2022 Yacht Available in Greece
Embark on a journey aboard this breathtaking 74-foot yacht, a marvel of contemporary design and craftsmanship, now on the market in the idyllic waters of Greece. Built in 2022, this remarkable vessel seamlessly blends sophistication with performance, making it an ideal choice for those seeking a yacht that promises unforgettable experiences on the open ocean.

Boasting an expansive 18-foot beam and a streamlined monohull design, this yacht glides effortlessly across the water, achieving impressive cruising speeds of 26 knots and a top speed of 32 knots. Driven by two powerful MAN inboard engines, this yacht guarantees a smooth and thrilling voyage, whether you're discovering secluded bays or enjoying a leisurely sail along the breathtaking Greek shores.

Inside, this opulent yacht is designed to host up to eight guests in four elegantly furnished cabins, each providing a tranquil haven after a day of sun-drenched adventures. With four heads in total, privacy and comfort are prioritized, allowing you and your guests to relax in luxury. The spacious interior is enhanced by premium finishes and meticulous design, creating a welcoming ambiance that feels like a home away from home.

The yacht's fiberglass and plastic hull not only ensures durability but also adds to its sleek appearance, while the vast deck space invites you to soak up the sun or host sophisticated gatherings under the night sky. With a water capacity of 290.59 gallons and a fuel capacity of 1373.7 gallons, this vessel is ready for long journeys, allowing you to explore the stunning Mediterranean landscapes without a worry.

As you explore yacht sales in the current location, this 2022 model stands out as a prime opportunity for discerning buyers. Whether you're a seasoned sailor or new to the yachting world, this yacht offers the perfect combination of

luxury, performance, and comfort. Seize the opportunity to own this extraordinary vessel and create cherished memories on the water.

Embrace the call of the open sea and make this magnificent yacht your own. Reach out to us today to discover more about this incredible yacht for sale and take the first step towards your next adventure!

SPECIFICATIONS

Basic Information

Category:
Motor yachts

Year Built:
2022

Model Year:
2022

Country:
Greece

Dimensions

LOA:
74' 0" (22.64 m)

Max Draft:
6' 0" (1.82 m)

Beam:
18' 0" (5.60 m)

Speed, Capacities and Weight

Cruise Speed:
26 Knots (29.92 MPH)

Water Capacity:
290.59 Gallons

Max Speed:
32 Knots (36.83 MPH)

Fuel Capacity:
1373.7 Gallons

Gross Tonnage:
53.3 Pounds

Accommodations

Sleeps:
8

Total Heads:
4

Hull and Deck Information

Hull Material:
Fiberglass and Plastic Yachts

Hull Designer:
N/A

Deck Material:
Fiberglass

Interior Designer:
N/A

Hull Configuration:
Monohull

Engine Information

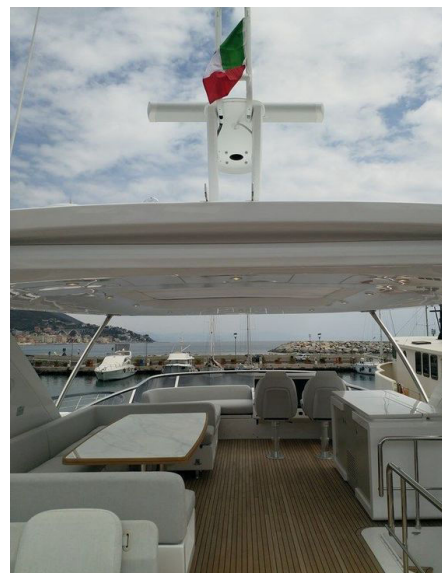
Engines:
2

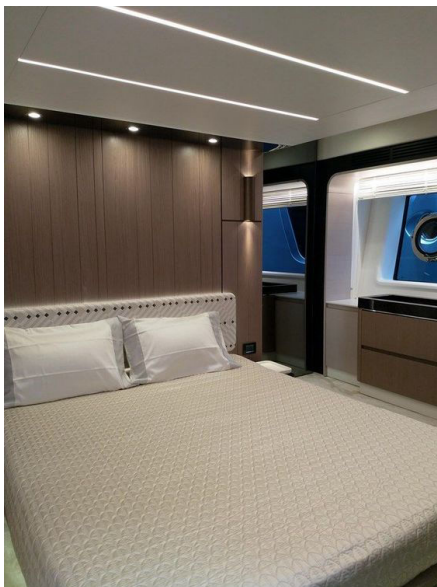
Engine Type:
Inboard

Manufacturer:
MAN

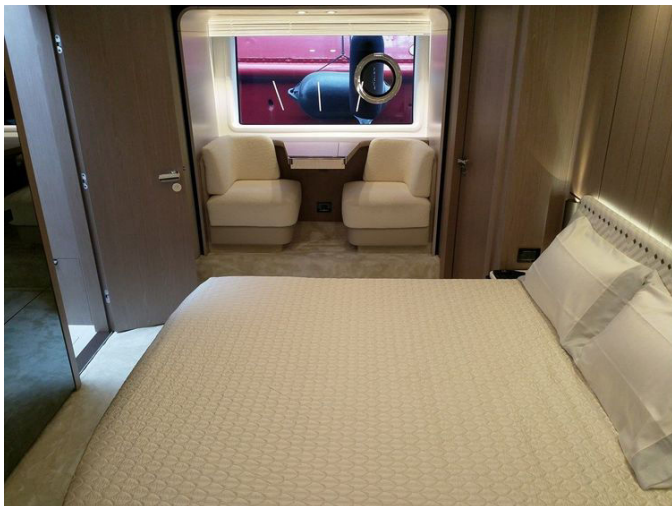
Fuel Type:
Diesel

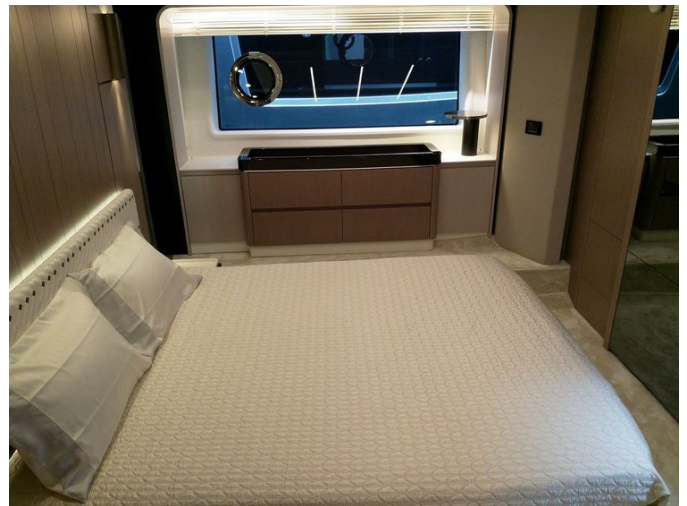
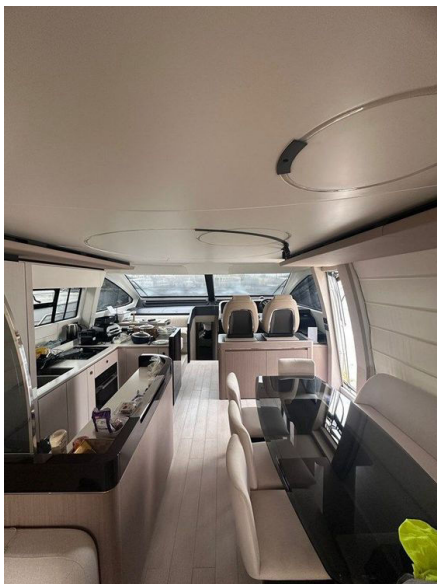
GALLERY













DETAILED DESCRIPTION

Accommodation

This yacht presents an opulent and expansive accommodation arrangement, ideal for both leisurely relaxation and thrilling adventures on the high seas. It boasts four tastefully designed cabins, offering generous space for guests, in addition to a separate cabin designated for the crew. The yacht can comfortably host eight guests, guaranteeing a peaceful night's rest for everyone on board, while the crew cabin is designed to house one crew member, ensuring uninterrupted service throughout your voyage. To enhance convenience, there are four well-equipped head compartments for guests, along with an additional head compartment for the crew, providing privacy and comfort for all aboard. This meticulously planned layout ensures that every element of your journey is attended to with the highest level of detail.

Specifications

This yacht features remarkable specifications that guarantee both high performance and comfort on the water. Measuring 22.64 meters in length and 5.60 meters in beam, it provides a roomy and stable platform for all your sea adventures. With a draft of 1.82 meters, it is capable of navigating a variety of water conditions, and its approximate displacement of 53.3 tons highlights its sturdy construction and stability. The vessel is powered by two 1400 mHP MAN CR V12 engines, which offer outstanding performance. These engines allow the yacht to achieve a top speed of up to 32 knots, while a cruising speed of 26 knots ensures a smooth and efficient voyage. Whether you desire speed or a leisurely cruise, the yacht's specifications are crafted to fulfill all your expectations.

Extras

This yacht comes with a range of outstanding extras that elevate both its functionality and luxury. A supplementary 20.5 KW Kohler generator guarantees a reliable power supply, while additional cleats at midship enhance mooring options. For simplified navigation, there is an extra control for the electric searchlight, paired with a chain-counter control conveniently situated at the helm. The yacht's interior has been refined with upgraded decor, adding an elegant touch. Maneuvering is made simple with the Easy Docking joystick for engines and thrusters by Marex, offering precise handling in confined areas. An electric searchlight mounted in front of the windshield improves visibility during nighttime journeys. Additional conduits have been installed to accommodate future upgrades, and the kitchen is equipped with upgraded Miele appliances, including an oven and cooktop, for a superior culinary experience. The yacht is also prepared for a watermaker installation, and a shore water plug is available for easy water access when docked. These carefully considered extras ensure that every voyage is as comfortable and enjoyable as possible.

Optionals main system

The yacht's optional primary systems are crafted to greatly enhance onboard comfort and ease. Central to these systems is the Seakeeper stabilizer 16, designed to reduce roll and deliver a smoother, more pleasant experience on the water, even in rough conditions. This cutting-edge stabilizing technology allows guests to unwind and enjoy their time on board without the discomfort of excessive movement. Furthermore, the yacht features a water maker, providing the luxury of generating fresh water directly from the sea. This capability is especially advantageous for long journeys, ensuring a steady supply of fresh water without the need for frequent port stops. Together,

these optional systems elevate the yachting experience, offering both stability and independence for all your maritime adventures.

Electrical system

The yacht's electrical system incorporates state-of-the-art technology to deliver exceptional navigation and communication capabilities. At the core of this system is the Raymarine AIS 700, a sophisticated Automatic Identification System that boosts safety by offering real-time tracking and data exchange with other vessels. This feature is essential for preventing collisions and ensuring smooth passage through crowded waterways. Enhancing this is the Raymarine Gold Package, which provides a full suite of navigation and communication tools. This package includes high-performance chartplotters, radar, and sonar systems, all engineered to deliver accurate and dependable data for assured navigation. Together, these elements of the electrical system ensure the yacht is fully prepared for any maritime journey, providing peace of mind and increased safety for everyone on board.

Appliances

The yacht is equipped with a selection of premium appliances designed to elevate the onboard living experience, offering both convenience and luxury. On the flybridge, there is a barbecue and an ice maker, ideal for hosting guests with outdoor dining and chilled beverages while taking in the stunning views. Inside, the saloon includes a wine cooler, allowing you to store and serve your preferred wines at the perfect temperature, adding an element of elegance to your gatherings. The galley features a dishwasher, making post-meal clean-up both easy and efficient. For the crew, a washer and dryer are conveniently situated in the crew cabin, ensuring laundry tasks are handled smoothly during long journeys. These carefully integrated appliances enhance the yachting

experience, addressing every need with style and practicality.

Audio-video systems

The yacht's audio-video systems are crafted to deliver an outstanding entertainment experience on board, merging advanced technology with intuitive features. In the saloon, a hi-lo mechanism for the TV ensures seamless integration and perfect viewing angles, allowing you to enjoy your favorite shows and films in comfort. The yacht is also prepped for a TV5/TV6 SAT TV antenna, offering the possibility of satellite television access, so you can remain connected to global broadcasts wherever your travels take you. Furthermore, the Smart Audio/Video Package elevates the onboard entertainment options, providing a refined and immersive audio-visual experience. These systems are thoughtfully designed to meet all your entertainment needs, ensuring every moment on board is both enjoyable and engaging.

Interior

The interior of this yacht exemplifies refined design and opulent comfort, seamlessly merging style with practicality. In the saloon, a meticulously crafted coffee table acts as a focal point, encouraging relaxation and social interaction. The main helm features a co-pilot seat, making navigation a shared and pleasurable activity. To set the ideal atmosphere, dimmer lights are strategically placed throughout the interior, allowing you to tailor the lighting to any mood or event. An electrically operated frosted glass partition gracefully divides the saloon from the galley, offering privacy while preserving an open and airy ambiance.

The master and VIP shower walls are embellished with stunning quartzite, infusing these private areas with a hint of natural sophistication. The Scenic

Lights Package further enriches the interior, spreading a warm and welcoming glow across the yacht. A two-tone saloon rug adds visual intrigue and comfort underfoot, complementing the wooden floors that flow through the saloon, dinette, and stairs. These thoughtfully chosen elements combine to create an interior that is both welcoming and elegant, ensuring that every moment on board is filled with luxury and tranquility.

Exterior

The exterior of this yacht is crafted to blend elegance with practicality, forming an inviting area for both relaxation and entertainment. In the cockpit, two plush chairs and furniture with a built-in refrigerator create an ideal spot for enjoying drinks while admiring the scenery. The flybridge includes a co-pilot seat for shared navigation experiences and is equipped with dimmer lights to create the perfect ambiance. An electric awning offers shade and comfort, while the flybridge hatch and hard top provide protection from the weather.

The aft flybridge is a sanctuary of comfort, featuring lounge furniture with L-shaped sofas and a starboard love seat, all made from durable Batyline fabric and paired with a chic coffee table. Spreader lights illuminate the aft flybridge, setting a warm tone for evening gatherings. The stern is enhanced with teak steps, adding a luxurious and durable touch.

On the bow, a sun shade sail with removable carbon fiber poles creates a cozy seating area, perfect for enjoying the sea breeze. A teak table on the bow provides a delightful spot for dining under the open sky. The flybridge and other areas are elegantly finished with teak, boosting the yacht's visual appeal. A telescopic gangway ensures easy boarding and disembarking, while underwater lights add a magical element to nighttime settings. The standard external cushions have been upgraded to Batyline fabric, ensuring both comfort and durability. These exterior features come together to create a sophisticated and welcoming atmosphere, ideal for enjoying life on the water.

Total of optionals

The yacht is adorned with a wide range of optional features that enhance both its visual charm and functionality. The lower deck is upgraded with a luxurious carpet, providing a plush feel underfoot. In the cockpit, an enclosure shields you from the elements, allowing you to enjoy this versatile area throughout the year. The cockpit docking station, equipped with an engine control joystick, ensures precise handling, making docking effortless even in difficult conditions. A cockpit table with a synthetic marble insert adds a touch of elegance and practicality, while walkway lights guarantee safe movement during the evening.

On the flybridge, a table with synthetic marble complements the refined design, creating an ideal spot for outdoor dining or socializing. The yacht's name is elegantly displayed on the transom in stainless steel, adding a personalized and stylish accent. For added security, a safe is installed in the master cabin, providing peace of mind for storing valuables. These optional features are carefully integrated to enhance the overall yachting experience, ensuring that every voyage is as comfortable and enjoyable as possible.

CONTACTS

Shestakov Yacht Sales is a brokerage company specializing in the sale and service of yachts worldwide. The company offers services for buying and selling both new and used motor yachts, sailing vessels, and luxury superyachts. They also provide yacht registration, insurance, technical maintenance, crew selection, and charter organization services across the U.S., Canada, Latin America, the Caribbean, and the Bahamas.

The founder and lead broker of the company is Andrey Shestakov, a licensed and certified expert with extensive experience in marine engineering and shipbuilding.

The company has an extensive network of partnerships with major yacht manufacturers worldwide and provides services in multiple languages, including Russian, Ukrainian, Spanish, and English. The office is in Dania Beach, Florida, USA.

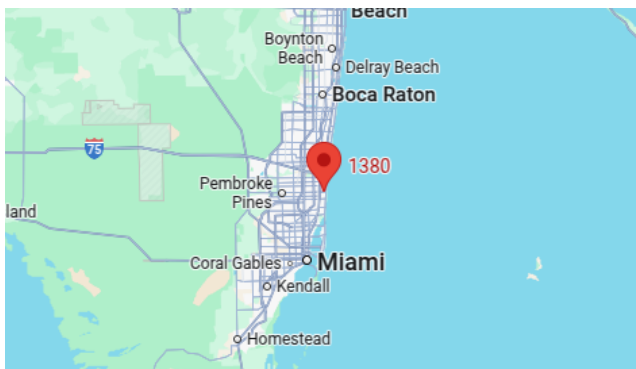
For more information and to view available yachts, you can visit the company's official website: <https://shestakovyachtsales.com>

Contact details

Phone: +1(954)274-4435

Email: andrey@shestakovyachtsales.com

Address



1380 Weeping Willow Way, Hollywood,
Florida 33019