

2010 PRIVILEGE 745 - PRIVILEGE



Builder: [PRIVILEGE](#)

Beam: 35' 0" (10.82 m)

Year Built: 2010

Min Draft: 23' 0" (7 m)

Model: 745

Max Draft: 26' 3" (8 m)

Price: \$1,500,000 USD Subject to change.

[See full listing on our website](#)

Location: Fort Lauderdale, United States

LOA: 74' 0" (22.56 m)

TABLE OF CONTENTS

OVERVIEW	3
SPECIFICATIONS	4
Basic Information	4
Dimensions	4
Speed, Capacities and Weight	4
Accommodations	4
Hull and Deck Information	5
Engine Information	5
GALLERY	6
DETAILED DESCRIPTION	16
CONTACTS	18

OVERVIEW

As a yacht of true refinement, few sailing catamarans compare to this example. Born of the esteemed Privilege shipyard in Les Sables d'Olonne, France—renowned for uncompromising build quality and a painstaking finish—this bluewater multihull pairs lavish onboard comfort with a composed, performance oriented demeanour that must be felt at sea to be fully understood. Within its peer group it is uncommon to find a cruising catamaran realized to such exacting standards. Carefully maintained from day one, she has been tended by a dedicated full time crew widely respected for their diligence; nothing is overlooked, and the yacht's pristine condition is evident at a glance. Equal parts refined luxury yacht and authentic performance cruiser, she is ideally configured for liveaboard life, discerning private ownership, or upscale charter.

She is presently receiving a comprehensive programme of upgrades scheduled for completion by January 2022, which includes a new Yanmar diesel engine on the starboard side, a new Phasor 22 kW diesel generator, new shaft seals, a new single phase 50 amp shore power cord, a full buff and wax of the hull and topsides, and new AGM house batteries. The sum of these works yields a turn key, ocean ready sailing catamaran prepared for extended passagemaking and graceful coastal cruising, presenting a standout opportunity in the luxury multihull and cruising catamaran market.

SPECIFICATIONS

Basic Information

Category:
Motor yachts

Year Built:
2010

Sub category:
Catamaran

Country:
United States

Model Year:
2010

Dimensions

LOA:
74' 0" (22.56 m)

Beam:
35' 0" (10.82 m)

Min Draft:
23' 0" (7 m)

Max Draft:
26' 3" (8 m)

Speed, Capacities and Weight

Water Capacity:
171.71 Gallons

Fuel Capacity:
264.17 Gallons

Accommodations

Total Heads:
5

Hull and Deck Information

Hull Material:

Fiberglass and Plastic Yachts

Hull Designer:

N/A

Deck Material:

Fiberglass

Interior Designer:

N/A

Hull Configuration:

N/A

Engine Information

Engines:

2

Engine Type:

Inboard

Manufacturer:

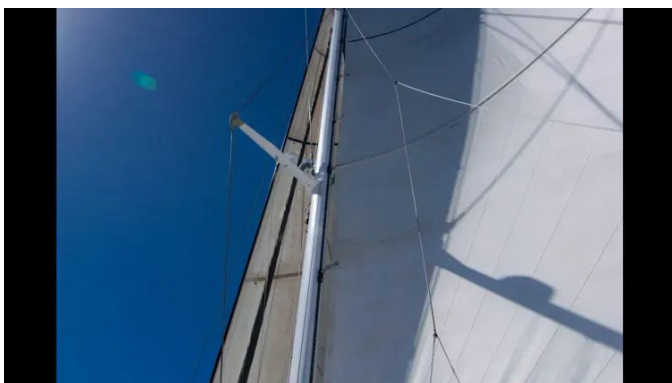
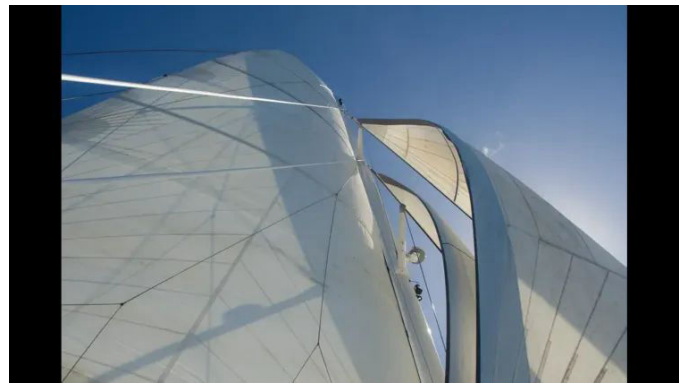
Yanmar

Fuel Type:

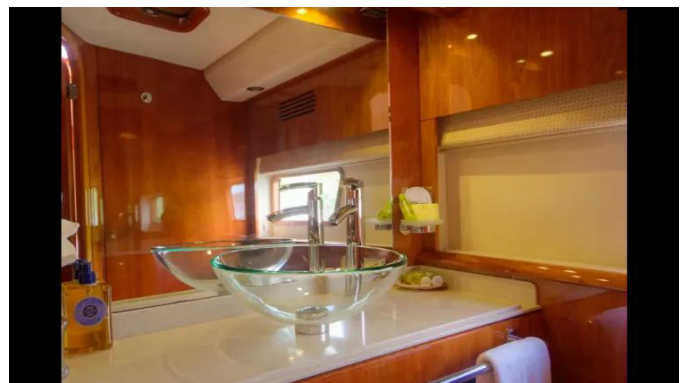
Diesel

GALLERY

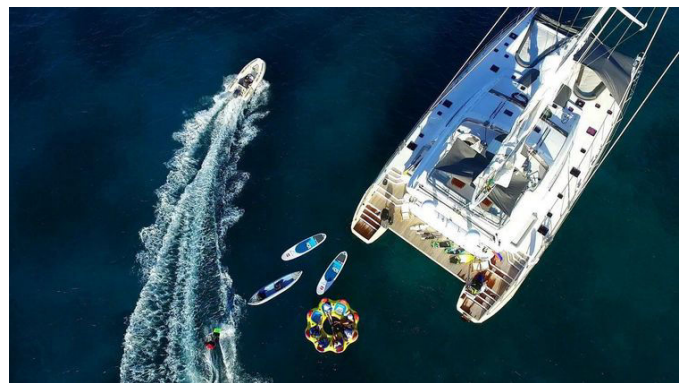






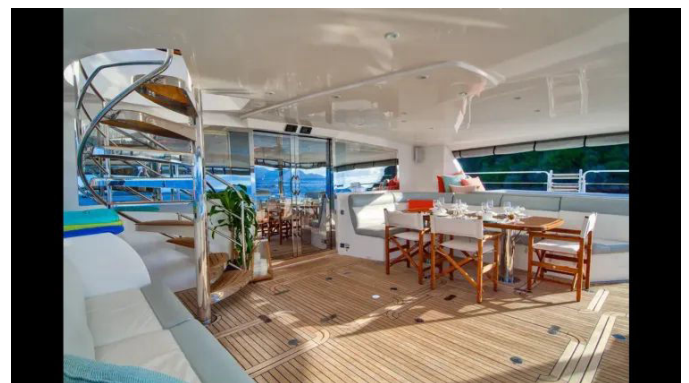














DETAILED DESCRIPTION

Description

As far as catamarans go, they do not come much nicer than this; built at the world renowned Privilege Shipyard in Les Sables d'Olonne, France—celebrated for industry leading build quality and meticulous attention to detail—she embodies an extraordinary fusion of luxury and performance that must be experienced to be fully appreciated, and in this class you will not find another catamaran constructed to such an exacting standard.

Professionally maintained from day one, her dedicated full time crew, recognized among the very best, has spared no detail, and the results are evident in every surface and system on board. Currently in progress, with completion scheduled for January 2022, is a comprehensive round of upgrades and refinements that further elevate her pedigree, including a new Yanmar diesel engine on the starboard side, a new Phasor 22 kW diesel generator, new shaft seals, a new single phase fifty amp shore power cord, a full buff and wax of the hull and topsides, and new AGM house batteries.

Other details

Disclaimer: The details of this vessel are offered in good faith, but neither accuracy nor the vessel's condition is guaranteed or warranted; prospective buyers should instruct their agents or surveyors to verify any particulars they consider important, and this vessel is offered subject to prior sale, price change, or withdrawal without notice.

Propulsion

Power is delivered by twin Yanmar 6LPA STP2 inboard diesel engines, both

model year 2010, with Engine 1 and Engine 2 identical in specification and each rated at 315 hp, for a combined output of 630 hp; both installations are inboard and run on diesel fuel, underscoring dependable performance and efficient long range capability.

Specifications

With an overall length of 74 ft and a waterline length of 73.5 ft, she carries a commanding beam of 35.67 ft, a maximum draft of 7.08 ft and a minimum draft of 8 ft, and her dry weight is 97,000 lb; the hull is constructed in fiberglass for strength and longevity, tankage includes 171.71 gal of fresh water and 264.17 gal of fuel, and accommodations are thoughtfully arranged with five guest cabins and five guest heads to ensure exceptional comfort for all aboard.

CONTACTS

Shestakov Yacht Sales is a brokerage company specializing in the sale and service of yachts worldwide. The company offers services for buying and selling both new and used motor yachts, sailing vessels, and luxury superyachts. They also provide yacht registration, insurance, technical maintenance, crew selection, and charter organization services across the U.S., Canada, Latin America, the Caribbean, and the Bahamas.

The founder and lead broker of the company is Andrey Shestakov, a licensed and certified expert with extensive experience in marine engineering and shipbuilding.

The company has an extensive network of partnerships with major yacht manufacturers worldwide and provides services in multiple languages, including Russian, Ukrainian, Spanish, and English. The office is in Dania Beach, Florida, USA.

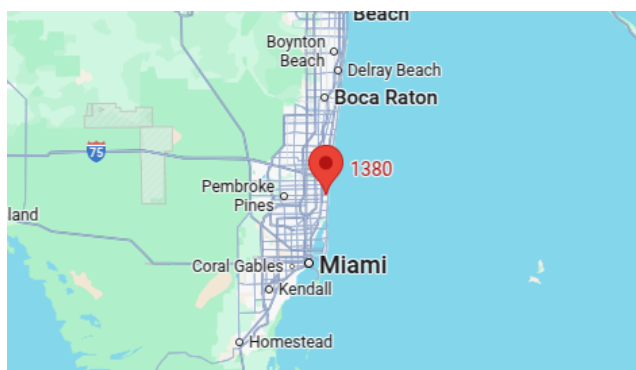
For more information and to view available yachts, you can visit the company's official website: <https://shestakovyachtsales.com>

Contact details

Phone: +1(954)274-4435

Email: andrey@shestakovyachtsales.com

Address



1380 Weeping Willow Way, Hollywood,
Florida 33019