



## ELIZABETH RUTH - CUSTOM



**Builder:**

[CUSTOM](#)

**Year Built:**

1991

**Model:**

Robinson Modified Monk

**Price:**

[See on website](#)

**Location:**

Poulsbo, United States

**Max Speed:**

12 Knots (13.81 MPH)

**LOA:**

74' 0" (22.56 mm)

**Beam:**

15' 0" (4.62 mm)

**Min Draft:**

- (0 mm)

**Max Draft:**

24' 4" (7.4166 mm)

**Cruising Speed:**

8 Knots (9.21 MPH)

If you would like to buy a yacht **ELIZABETH RUTH - CUSTOM** or would like help answering any questions concerning purchasing, selling, or chartering a yacht, please call **+1(954)274-4435** or click here on <https://shestakovyachtsales.com>

# TABLE OF CONTENTS

**Overview ..... 4**

**Specifications ..... 5**

    Basic Information ..... 5

    Dimensions ..... 5

    Speed, Capacities and Weight ..... 5

    Accommodations ..... 6

    Hull and Deck Information ..... 6

**Gallery ..... 7**

**Contacts ..... 13**

# OVERVIEW

---

Discover the Timeless Elegance of a 1991 Steel Yacht

Step aboard this magnificent 74-foot steel yacht, a true testament to the enduring craftsmanship and timeless elegance of maritime design. Currently located in the United States, this exquisite vessel is now available for sale, offering a unique opportunity for discerning buyers to own a piece of nautical history.

Crafted in 1991, this yacht embodies the perfect blend of classic design and robust engineering. Its steel hull and deck promise durability and strength, ensuring a smooth and stable journey across the waves. With a beam of 15 feet, this yacht offers ample space for relaxation and entertainment, making it an ideal choice for both intimate gatherings and grand celebrations on the water.

Powered by a reliable Caterpillar inboard engine, this yacht cruises comfortably at 8 knots, with the capability to reach a maximum speed of 12 knots. Whether you're embarking on a leisurely coastal cruise or an adventurous offshore voyage, this vessel promises a seamless and enjoyable experience.

Inside, the yacht is designed to cater to your every need. With two well-appointed heads, it offers the convenience and comfort necessary for extended journeys. The spacious interior, though not detailed by a specific designer, invites you to personalize the space to reflect your own style and taste.

For those who appreciate the finer things in life, this yacht's impressive fuel capacity of 4800 gallons and water capacity of 1200 gallons ensure that your adventures are limited only by your imagination. Whether you're exploring the serene coastlines or venturing into the open sea, this yacht is equipped to take you there with ease and grace.

This is more than just a yacht; it's an invitation to explore the world in unparalleled luxury. If you're looking to buy a yacht that combines classic elegance with modern performance, this 1991 steel yacht is the perfect choice. Don't miss the opportunity to make this exceptional vessel your own. Contact us today to learn more about this yacht for sale and begin your journey towards owning a piece of maritime excellence.

# SPECIFICATIONS

---

## Basic Information

---

**Category:**  
Motor yachts

**Sub category:**  
Trawler

**Model Year:**  
1991

**Year Built:**  
1991

**Country:**  
United States

## Dimensions

---

**LOA:**  
74' 0" (22.56 mm)

**Min Draft:**  
- (0 mm)

**Beam:**  
15

**Max Draft:**  
24' 4" (24.333 mm)

## Speed, Capacities and Weight

---

**Cruise Speed:**  
8 Knots (9.21 MPH)

**Cruise Speed Range:**  
0 Kts.

**Max Speed:**  
12 Knots (13.81 MPH)

**Max Speed Range:**  
0 Kts.

**Gross Tonnage:**  
0 Pounds

**Water Capacity:**  
1200 Gallons.

**Holding Tank:**  
0 Gallons

**Fuel Capacity:**  
4800 Gallons

## Accommodations

---

**Total Cabins:**

—

**Total Berths:**

—

**Sleeps:**

0

**Total Heads:**

2

**Crew Cabin:**

0

**Crew Berths:**

0

**Crew Heads:**

—

## Hull and Deck Information

---

**Hull Material:**

Steel Yachts

**Deck Material:**

Steel

**Hull Configuration:**

N/A

**Hull Designer:**

N/A

**Interior Designer:**

N/A

## Engine Information

---

**Engines:**

1

**Manufacturer:**

Caterpillar

**Engine Type:**

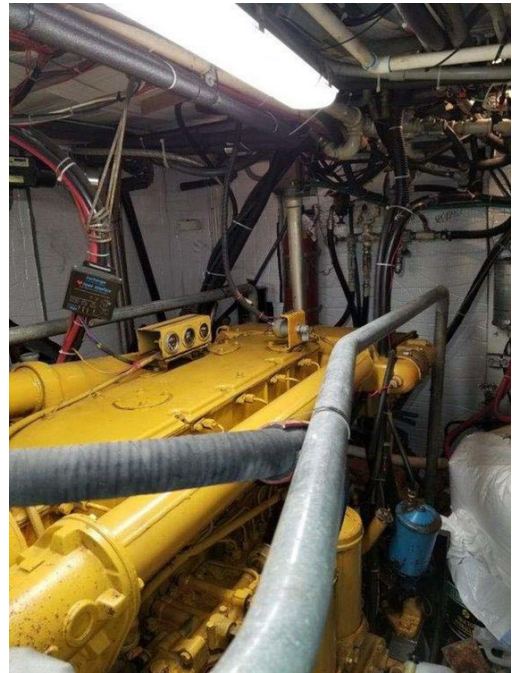
Inboard

**Fuel Type:**

Diesel

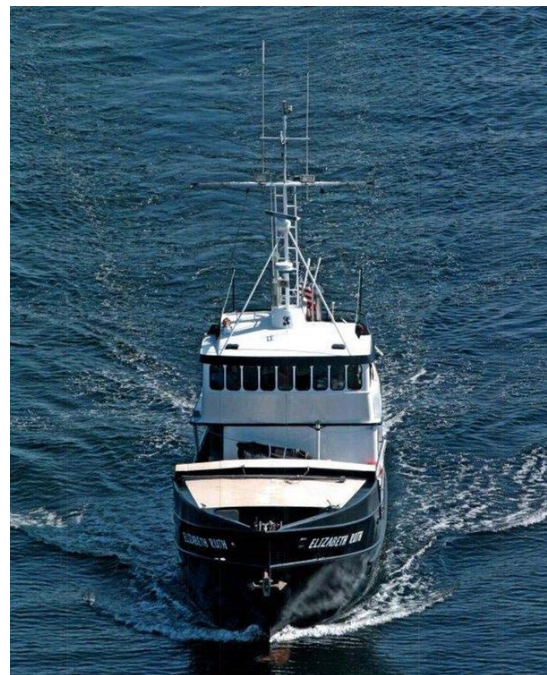


## GALLERY



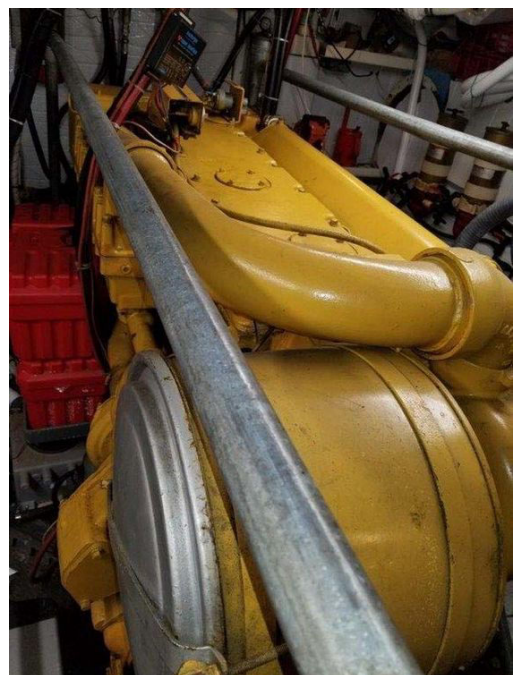
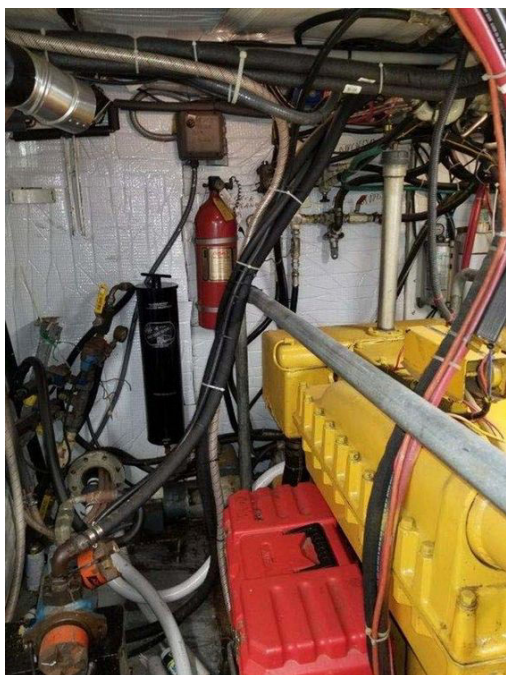














# CONTACTS

---

Shestakov Yacht Sales is a brokerage company specializing in the sale and service of yachts worldwide. The company offers services for buying and selling both new and used motor yachts, sailing vessels, and luxury superyachts. They also provide yacht registration, insurance, technical maintenance, crew selection, and charter organization services across the U.S., Canada, Latin America, the Caribbean, and the Bahamas.

The founder and lead broker of the company is Andrey Shestakov, a licensed and certified expert with extensive experience in marine engineering and shipbuilding.

The company has an extensive network of partnerships with major yacht manufacturers worldwide and provides services in multiple languages, including Russian, Ukrainian, Spanish, and English. The office is in Dania Beach, Florida, USA.

For more information and to view available yachts, you can visit the company's official website: <https://shestakovyachtsales.com>

## Contact details

---

**Phone:** +1(954)274-4435

**Email:** [andrey@shestakovyachtsales.com](mailto:andrey@shestakovyachtsales.com)

## Address

---



Harbour Towne Marina, 850 NE 3rd St,  
STE 213,  
Dania, FL 33004