

## 2009 AZIMUT 75 - AZIMUT YACHTS



**Builder:** [Azimut Yachts](#)

**Beam:** 18' 0" (5.56 m)

**Year Built:** 2009

**Max Draft:** 18' 7" (5.67 m)

**Model:** 75

**Cruising Speed:** 19 Knots (21.86 MPH)

**Price:** \$459,000 USD Subject to change.

[See full listing on our website](#)

**Location:** Miami, United States

**LOA:** 75' 0" (22.86 m)

---

# TABLE OF CONTENTS

---

<b>OVERVIEW .....</b>	<b>3</b>
<b>SPECIFICATIONS .....</b>	<b>4</b>
Basic Information .....	4
Dimensions .....	4
Speed, Capacities and Weight .....	4
Accommodations .....	4
Hull and Deck Information .....	5
Engine Information .....	5
<b>GALLERY .....</b>	<b>6</b>
<b>DETAILED DESCRIPTION .....</b>	<b>16</b>
<b>CONTACTS .....</b>	<b>19</b>

## OVERVIEW

---

A one third ownership share is available, and the owner welcomes trades—prime real estate, aircraft, or land are all considered; not offered for sale in U.S. waters to U.S. residents, this luxury motor yacht is conceived for superyacht living and true blue water cruising.

---

# SPECIFICATIONS

---

## Basic Information

---

**Category:**  
Motor yachts

**Year Built:**  
2009

**Sub category:**  
Motor Yacht

**Country:**  
United States

**Model Year:**  
2009

## Dimensions

---

**LOA:**  
75' 0" (22.86 m)

**Max Draft:**  
18' 7" (5.67 m)

**Beam:**  
18' 0" (5.56 m)

## Speed, Capacities and Weight

---

**Cruise Speed:**  
19 Knots (21.86 MPH)

## Accommodations

---

**Total Heads:**  
4

## Hull and Deck Information

---

**Hull Material:**

Fiberglass and Plastic Yachts

**Hull Designer:**

N/A

**Deck Material:**

Fiberglass

**Interior Designer:**

N/A

**Hull Configuration:**

N/A

## Engine Information

---

**Engines:**

2

**Engine Type:**

Inboard

**Manufacturer:**

MAN

**Fuel Type:**

Diesel

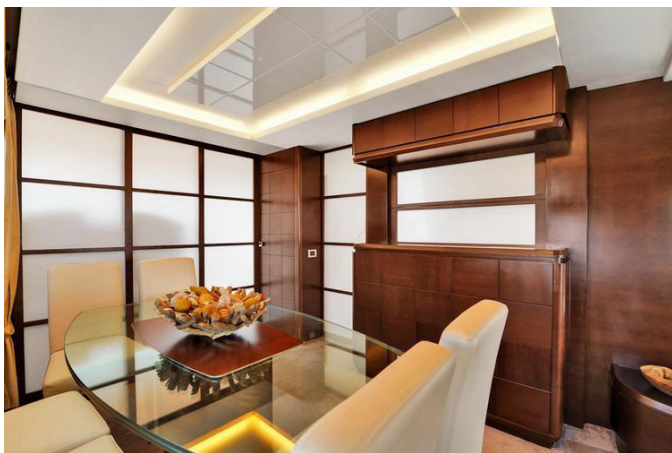
# GALLERY

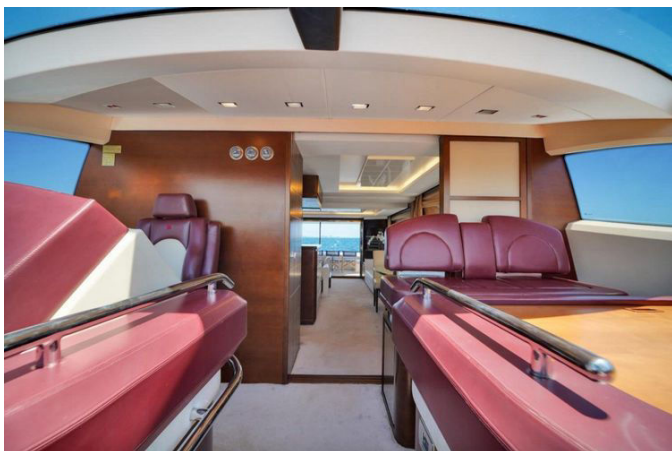




















---

# DETAILED DESCRIPTION

---

## Description

---

Offered as one third fractional ownership, this yacht invites shared enjoyment with sensible economics and flexible access to premier cruising. The owner is open to trades including real estate, aircraft, land and other assets, creating adaptable pathways toward ownership that suit discerning buyers. Please note the vessel is not for sale in U.S. waters to a U.S. resident, preserving specific jurisdictional requirements while delivering a luxurious platform for coastal and offshore adventures.

## Other details

---

The salon sets a sophisticated tone with generous sofas to port and starboard complemented by two armchairs, a cocktail table and a Fusion radio, all atop plush carpeting that frames a hi/lo TV rising on command for cinema style viewing; forward to port, opposite the galley, a dining table with six chairs welcomes casual meals while a formal dining area aft provides elegant seating for eight for memorable entertaining. The semi enclosed, on deck galley is arranged for serious culinary work and features a full size Kenmore refrigerator and freezer, a KitchenAid oven/microwave, a MIELE dishwasher, a MIELE four burner induction cooktop paired with a MIELE extractor, abundant cabinetry and work surfaces, a sink and a manual side door for quick deck access and effortless provisioning. At the lower helm, a Raymarine display pairs with MAN electronic displays MMDS CLC 6.3 and bow and stern thruster controls are at hand alongside a White Star compass for a true heading reference, a Raymarine autopilot for precision tracking, trim tab control indicators and a Jabsco searchlight control, while a full width helm bench provides comfortable seating and a wine cooler tucked beneath ensures

refreshments are always within easy reach. Accommodations are crafted for privacy and indulgence: the full beam master stateroom centers on a king size, centerline berth with ample storage below, carpeted flooring, two nightstands, a walk in closet, a safe, generous drawer storage and a cozy sofa, complemented by a Samsung TV and a Bose sound system and expansive port and starboard windows that flood the space with natural light, with an en suite head and shower; the forward VIP features a centerline queen berth with storage beneath, carpeted flooring, oversized hull windows to port and starboard, reading lights, a hanging locker, outboard cabinetry and shelving, a TV and an en suite head with shower; each of the starboard side and port side guest cabins provides two twin berths with storage below, reading lights, a convenient inboard Pullman style berth, a hanging locker, a TV, carpeted flooring and a private en suite head with shower. Outdoor living is effortless on the teak laid aft deck where port and starboard steps lead to the swim platform with direct access to the engine room and crew quarters; an inviting U shaped seating area surrounds a teak table on a stainless steel base, twin windlasses to port and starboard stand ready on the bow, and practical touches include an engine room hatch, a sink, a fridge, overhead Fusion speakers, overhead lighting, an aft deck camera and seamless transitions both up to the flybridge and aft through a sliding door into the salon. Up on the flybridge, a large seating area with a table becomes the natural gathering spot, enhanced by Fusion speakers, a sink, an under counter fridge and a bimini top for shade, while equipment highlights include an Apacmare davit on the aft flybridge, Sat TV for entertainment and a Raymarine radar for confident navigation. The flybridge helm echoes the lower station with a Raymarine display, a Raymarine autopilot, MAN electronic displays MMDS CLC 6.3, bow and stern thruster controls, a White Star compass, a Raymarine VHF, trim tab control indicators and a Jabsco searchlight control. Crew are well accommodated in two twin berth cabins to port and starboard sharing a functional head. Mechanical systems inspire

confidence, led by twin MAN V12 Common Rail engines rated at 1360 hp each and supported by twin Kohler 27 kW generators showing approximately 4195 hours to port and 2850 hours to starboard, with maneuverability enhanced by bow and stern thrusters and comfort secured by a hot water heater, electric and manual bilge pumps, a battery charger and air conditioning. The details of this vessel are presented in good faith; however, no guarantees or warranties are made regarding accuracy or condition, and buyers are advised to instruct their agents or surveyors to verify particulars of special interest, as the vessel is offered subject to prior sale, price change or withdrawal without notice.

## Propulsion

---

Power is provided by a matched pair of MAN V12 Common Rail inboard diesel engines, each rated at 1360 hp and showing approximately 1950 hours, mated to direct drive shafts that deliver robust, efficient thrust and dependable performance for coastal cruising and extended passages.

## Specifications

---

This yacht cruises comfortably at 19 kn and measures 75.25 ft length overall with a beam of 18.33 ft and a maximum draft of 5.83 ft. Dry weight is 121,254 lb and the hull is molded in fiberglass. Guest accommodations comprise four cabins and four heads, combining generous living spaces with practical systems for confident ownership.

# CONTACTS

---

Shestakov Yacht Sales is a brokerage company specializing in the sale and service of yachts worldwide. The company offers services for buying and selling both new and used motor yachts, sailing vessels, and luxury superyachts. They also provide yacht registration, insurance, technical maintenance, crew selection, and charter organization services across the U.S., Canada, Latin America, the Caribbean, and the Bahamas.

The founder and lead broker of the company is Andrey Shestakov, a licensed and certified expert with extensive experience in marine engineering and shipbuilding.

The company has an extensive network of partnerships with major yacht manufacturers worldwide and provides services in multiple languages, including Russian, Ukrainian, Spanish, and English. The office is in Dania Beach, Florida, USA.

For more information and to view available yachts, you can visit the company's official website: <https://shestakovyachtsales.com>

## Contact details

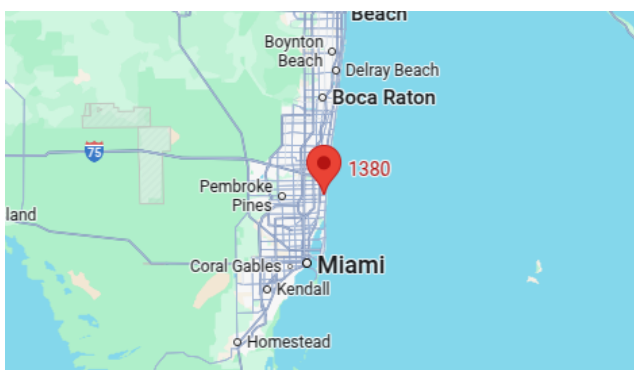
---

**Phone:** +1(954)274-4435

**Email:** [andrey@shestakovyachtsales.com](mailto:andrey@shestakovyachtsales.com)

## Address

---



1380 Weeping Willow Way, Hollywood,  
Florida 33019