



SHESTAKOV

Yacht Sales

MILAMO - SUNSEEKER



Builder: [Sunseeker](#)

LOA: 76' 0" (23.16 m)

Year Built: 2022

Beam: 19' 0" (5.94 m)

Model: 76 Yacht

Max Draft: 18' 4" (5.58 m)

Price: \$3,890,000 USD Subject to change.

[See full listing on our website](#)

Location: Aventura, United States

Max Speed: 32 Knots (36.83 MPH)

If you would like to buy a yacht **MILAMO - SUNSEEKER** or would like help answering any questions concerning purchasing, selling, or chartering a yacht, please call **+1(954)274-4435** or click here on <https://shestakovyachtsales.com>

TABLE OF CONTENTS

OVERVIEW	3
SPECIFICATIONS	4
Basic Information	4
Dimensions	4
Speed, Capacities and Weight	4
Accommodations	4
Hull and Deck Information	5
Engine Information	5
GALLERY	6
DETAILED DESCRIPTION	22
CONTACTS	32

OVERVIEW

Milamo is a U.S. duty paid, American specification luxury motor yacht, meticulously equipped with an impressive suite of premium factory options. Her desirable midships galley arrangement creates an expansive, sociable heart to the yacht, while Silver Oak Satin cabinetry complemented by light Cadorn hardwood soles delivers a sleek, contemporary interior palette. Evident throughout is a careful, prideful level of ownership: she has remained under the stewardship of the same Captain since launch and is offered turnkey with all services current, including a recent 1,000 hour MAN engine service, a fresh polish and wax, and a complete bottom job finished in Spring 2026.

SPECIFICATIONS

Basic Information

Model Year:
2022

Country:
United States

Year Built:
2022

Dimensions

LOA:
76' 0" (23.16 m)

Max Draft:
18' 4" (5.58 m)

Beam:
19' 0" (5.94 m)

Speed, Capacities and Weight

Max Speed:
32 Knots (36.83 MPH)

Fuel Capacity:
1585 Gallons

Water Capacity:
370 Gallons

Accommodations

Total Heads:
4

Crew Berths:
3

Hull and Deck Information

Hull Material:

Fiberglass and Plastic Yachts

Hull Designer:

N/A

Deck Material:

Fiberglass

Interior Designer:

N/A

Hull Configuration:

N/A

Engine Information

Engines:

2

Engine Type:

Inboard

Manufacturer:

MAN

Fuel Type:

Diesel

GALLERY



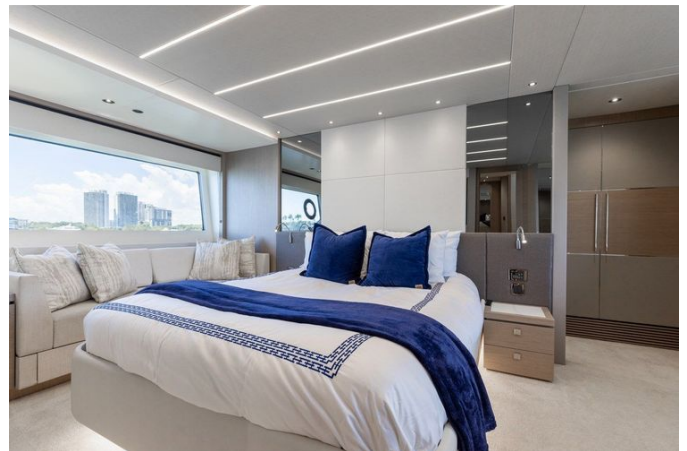


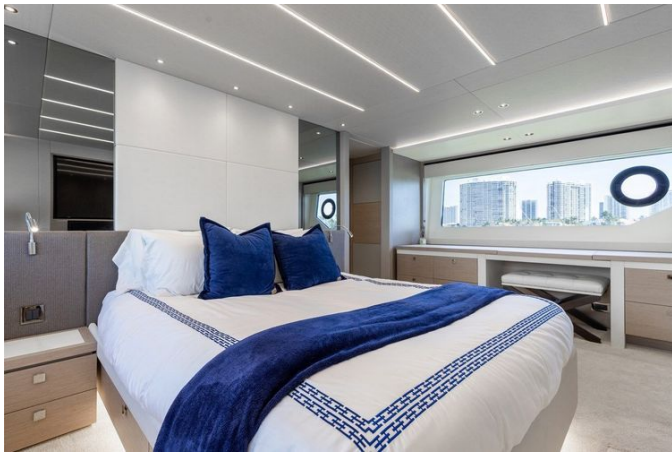














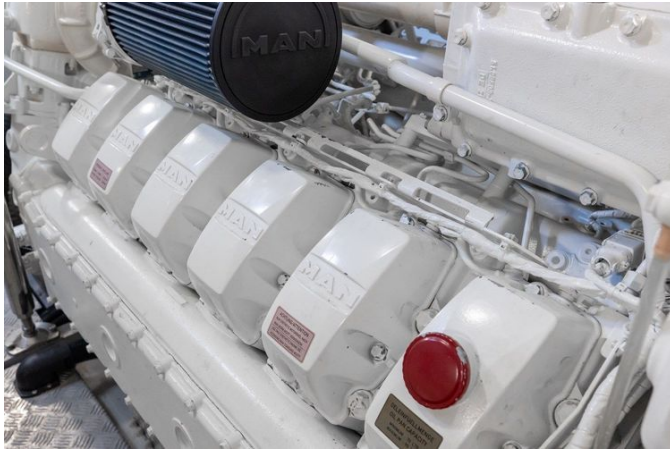














DETAILED DESCRIPTION

Options installed

At the primary helm, navigation duties are entrusted to a suite of Simrad instruments centred on IS42 speed and depth displays paired with an Airmar B744V depth, speed and temperature transducer, supplemented by a Simrad SonarHub fishfinder module. Steering and course keeping are handled by a Simrad AP44 autopilot while situational awareness is delivered through two 19" Simrad MO19T displays, a Simrad NSO processor controlled by a Simrad OP50 with SD card reader, and a Simrad Halo 4 pulse compression radar mated to a 64 nm, 4 foot open array scanner. Voice and data communications on the main console are provided by a Simrad RS90 VHF radio with DSC and a 2.4 metre whip antenna, with AIS functionality managed by a Simrad NAIS 400 AIS module with GPS linked to a dedicated 2.4 metre AIS VHF antenna. The entire Simrad network is tied into the vessel's Wi-Fi, allowing NSS control from an iPad or iPhone. The flybridge helm mirrors this capability with its own Simrad IS42 speed and depth instrument, a second Simrad AP44 autopilot, twin Simrad NSS16 Evo3S 16" multifunction touchscreen chartplotters and a Simrad HS100 VHF radio with DSC, while a third station engine control in the aft cockpit provides engine throttles, stop/start and thruster operation.

Entertainment is elevated by the Performance AV Package, which outfits the saloon with a Samsung 55" UHD television featuring the built-in Apple TV App and a Blu-ray player, partnered with a Proficient Protege LSB3 passive soundbar driven by a Sonos Amp and Sonos Subwoofer and B&W rear speakers fed by an additional Sonos Amp for a true surround experience. The master stateroom repeats this arrangement with a Samsung 55" UHD television, Blu-ray player and Protege LSB3 soundbar powered by a Sonos Amp and Sonos Subwoofer. Forward accommodation enjoys a Samsung 43"

UHD television with Apple TV App, Blu-ray player and a Protege LSB3 soundbar on a Sonos Amp, while the starboard guest cabin is fitted with a Samsung 32" HD television with Apple TV App, Blu-ray and a Sonos Amp driving Fusion ceiling speakers. The port guest cabin is equipped with a 24" HD television and Blu-ray player, with a Sonos Port feeding Fusion ceiling speakers through a two-channel amplifier and Apple TV included. Crew quarters feature a 24" HD television alongside a Fusion Apollo radio with Bluetooth and AirPlay to Fusion ceiling stereo speakers, and a Sonos Port integrated into the cabin AV system.

Exterior sound is zoned for effortless entertaining, with the aft cockpit hosting four Sonance VPXT6R Extreme speakers powered by a Sonos Amp, the flybridge fitted with four Sonance VPXT6R Extreme speakers and Sonos Amp, and the foredeck supplied by two Sonance VPXT6R Extreme speakers with their own Sonos Amp; all exterior zones are controlled from the Sonos App on the supplied iPad. Connectivity is delivered by an onboard router that supplies internet via Wi-Fi or cellular data and can link to marina Wi-Fi; the vessel supports up to two user-supplied SIM cards to access 3G-4G data networks while in range, noting this system provides data communications only and does not include voice service.

Electrical and lighting systems have been thoughtfully specified, with a 2 kW Victron inverter powering the vessel's refrigeration circuits — including the ice maker and optional wine cooler — from the DC bank, backed by two dedicated Trojan 100Ah AMG batteries. Illumination beneath the waterline is achieved with eight Lumishore TIX202 underwater LEDs — four mounted on the stern and two on each side — while practical access to the engine room is afforded by a Seaglaze Series 28 Ocean heavy-duty watertight door from the crew cabin. Long-range self-sufficiency is provided by an HRO Seafari water maker producing 110 lt per hour (SFC 700-1). Boarding is facilitated by a hydraulic telescopic gangway, 5 metres long in stainless steel with teak treads, and the flybridge aft deck is prepared for a spa tub installation with a raised

sunbathing moulding. A fresh water deck wash system supplies outlets to the bathing platform, flybridge and foredeck. The forward flybridge seating converts to a sunbed via a fold out in fill board and cushion, the in fill supported by a teak coffee table on a telescopic leg. Teak extends along the side decks to the anchor deck and seating group deck, and the foredeck features a teak table with a fixed top on a polished stainless steel leg. Interior joinery is finished in Silver Oak, low build open grain satin, complemented by Cadorin hardwood flooring in the saloon, dining area and helm, on the main stairs from saloon to lobby and in the lower lobby. The port mid cabin offers two single beds with an electrically operated slider to form an occasional double when required.

The Platinum USA Package completes the specification with a composite hardtop over the flybridge that incorporates an electric retractable centre canopy and an aft electric awning, paired with a Sleipner Zero Speed stabiliser vector fin system and a Tropical upgrade for the air conditioning. Redundancy and convenience come from a second 29 kW generator and a Glendinning Cablemaster. Manoeuvring in tight quarters is made simple by hydraulic Sleipner thrusters — a 23.3 hp bow unit and a 20 hp stern unit — both offering simultaneous dual proportional controls. An integrated oil change system services engines, gearboxes and generators, and the galley benefits from an electrically operated side opening window. Alfresco cooking is catered for with a marine electric BBQ grill on the fly wet bar, a custom BBQ grill wetbar on the aft flybridge and a cockpit wet bar. Lighting ambience is refined with dimmer switches on interior and exterior overhead lights and low level LED side deck lights, ten per side. Domestic conveniences include separate Miele washing machine and tumble dryer units, an upgraded integrated Miele microwave oven, a 20 bottle wine cooler, a drawer refrigerator beneath the console and two drawer refrigerators under the bow sunbeds. Deck appointments are enhanced with flybridge teak decking, an extra pair of 12" spring stern mooring cleats and a pair of retractable cleats for the tender on the platform. Security is

discreetly provided by digital lock safes in the master and forward stateroom, and the visual composition is finished with a striking black hard top.

Construction

The hull and superstructure are fashioned from hand-laid GRP laminate and finished in a high-gloss gel coat accented with integrated stripes, producing a structure built for long-term performance. A vinylester skin coat combined with powderbound mat forms a durable protective layer, while the stitched multi-axial reinforced single-skin bottom delivers exceptional rigidity in critical areas. Balsa-cored topsides have been used to achieve an optimal balance of stiffness and reduced weight, complemented by a cored deck and superstructure to ensure unified structural behavior. Inside, longitudinal stringers are supported by transverse bulkheads and reinforced floors, creating a strong, cohesive framework throughout the vessel.

Accommodations

A flush stainless steel glazed sliding door opens from the aft cockpit into a saloon that immediately conveys refined comfort and attention to detail. The space is air conditioned and equipped with a 55-inch television linked to a Blu-ray/radio/CD/DVD cinema surround system, while an iPod dock/radio serves the exterior entertainment network. A central coffee table anchors the seating area, which is softened by scatter cushions and a fitted carpet, and illuminated by LED overhead lighting 24v. Practicality is addressed with two double AC sockets and a carefully curated selection of interior finishes and veneers that complete the elegant atmosphere.

Forward of the saloon, the dining area has been conceived for effortless entertaining around a formal dining table with an outboard bench and five chairs. A dedicated bar cabinet is stocked with eight champagne flutes and

eight whisky glasses, and easy access to the lower decks is provided by nearby stairs. The dining space also benefits from LED overhead lighting 24v, two double AC sockets and fitted carpet, blending functionality with a polished presentation.

The aft master stateroom is a secluded sanctuary framed by panoramic windows with opening ports and blinds, centering on a double berth with under-berth drawers and storage. Beside the bed are bedside cabinets, a fixed settee and a dressing table with mirror and stool, while climate control is provided by air conditioning. Lighting includes LED overhead lights 24v and two reading lights 24v, and convenience is assured by two double AC sockets. Entertainment is supplied by a 55-inch television and a CD/DVD player, and the suite is complemented by a walk-in wardrobe and direct access to the en suite toilet and shower over a fitted carpet.

The master en suite shower room is appointed with an electric toilet and dual washbasins with taps and a soap dispenser, accompanied by a toothbrush and glass holder, towel ring and towels, and a mirrored vanity unit. A separate shower compartment is provided, together with an extractor fan, LED overhead light 24v and an opening porthole with mosquito screen and blind for ventilation, plus a razor socket 240/110v to add practical versatility.

The VIP forward stateroom presents a double berth with drawers and storage beneath, a wardrobe and a dressing table with mirror and stool, and is brightened by two panoramic windows with opening ports and blinds and a deck hatch fitted with a screen. Comfort systems include air conditioning, LED overhead lights 24v, two reading lights 24v and two double AC sockets, and entertainment is supplied by a 40-inch television and a radio/CD/DVD player. The cabin features a door to its en suite toilet/shower and a fitted carpet underfoot.

The VIP en suite shower room features an electric toilet, a washbasin with taps and a soap dispenser, toothbrush and glass holder, towel ring and towels and

a mirrored vanity unit, arranged around a separate shower compartment. An extractor fan, LED overhead light 24v, an opening porthole with mosquito screen and blind, and a razor socket 240/110v ensure convenience and comfort.

On the starboard side, the guest cabin is furnished with a double berth with drawers and storage beneath, bedside units and a wardrobe with a mirrored door. The cabin is served by LED overhead lights 24v, two reading lights 24v and two double AC sockets, and benefits from an opening porthole with mosquito screen and blinds. Air conditioning, a 32-inch television and a radio/CD/DVD player round out the amenities of this inviting guest retreat.

Main helm console

Engineered to inspire confident command and effortless passage-making, the main helm console pairs a port-side observation seating group with sumptuous upholstered helm chairs positioned before a console trimmed with a refined walnut-type fascia. A leather-rimmed chrome steering wheel linked to hydraulic power steering delivers precise, responsive handling, while full engine instrumentation is complemented by a touchscreen monitoring panel, a rudder indicator, trim tab controls and neatly organized switch panels. Navigation and communications are comprehensively provided by a radar/chart plotter with GPS, autopilot, electronic speed and depth sounder, VHF radio with DSC and a reliable compass, with a clear horn for signaling. Practical comforts and safety features include windscreen wipers with washers, demisters, a cigar lighter, glass holders, a double AC socket and a hand-held fire extinguisher, and a side-opening door to the side deck ensures rapid, convenient access for docking and line handling.

Deck

Every exterior fitting on deck is fashioned from polished stainless steel, including a refined pulpit and cockpit rails, heavy-duty stainless steel fendering protected by a rubber insert, a bow roller with anchor stop and an elegant stainless bow plate, all contributing to a cohesive and durable finish. Mooring is made effortless by eight stainless steel cleats, while an imposing Delta anchor of 50 kg is secured on 60 m of 12 mm galvanised chain and handled by an electric bow winch and capstan with 24v controls at deck, cockpit and flybridge positions. A purpose-built chain locker incorporates dedicated fender stowage and a discreet fender tie bar beneath the anchor locker lid for orderly handling. Forward visibility and safety are enhanced by a sweeping curved safety glass windscreen swept by three pantograph windscreen wipers at 24VDC with washer systems, supported by IMCO navigation lights and a remote spotlight operating at 24v. Practical conveniences such as fuel fillers to port and starboard, a fresh water filler and an ensign staff with socket are fitted as standard, while foredeck storage lockers and comfortable foredeck seating provide inviting spaces for leisurely cruising or tranquil anchoring.

Galley

Meticulously crafted to combine refined style with practical function, the galley features electrically operated refrigerator and freezer drawers that keep provisions perfectly organised, a four-burner ceramic hob vented by an extractor fan for clean, efficient cooking, and a microwave oven for effortless meal preparation. At its heart sits a stainless-steel sink with hot and cold water paired with a dishwasher to make cleanup seamless, while an integrated rubbish bin maintains a tidy work surface. Everyday convenience is enhanced by two conveniently positioned double AC sockets and a complete eight-place crockery and cutlery service ready for use. For added assurance, a hand-held

fire extinguisher and a first aid kit are carried on board, providing comprehensive safety and peace of mind.

Aft cockpit

Beneathfoot, a teak-laid cockpit floor is protected by a self-draining arrangement that preserves its immaculate finish, while a moulded staircase rises gracefully to the flybridge. A discreet side bar, fitted with an ice maker and cool box, keeps refreshments perfectly chilled, and the comfortable stern seating is positioned just forward of secure stern safety gates. Practicality is assured by an engine room access hatch located for effortless servicing, with rope lockers to keep lines neatly stowed, and two 24v stern capstan winches with fairleads to simplify handling. Entertainment flows through integrated cockpit speakers, and evenings are set with 24v overhead cockpit lights complemented by 24v low-level courtesy lights throughout the aft cockpit.

Engines

Twin MAN V12 engines, each rated at 1,550 HP, drive the yacht from within an engine room that has been meticulously soundproofed to deliver exceptionally quiet, refined cruising. Fuel is supplied from two aluminium cross-balanced tanks monitored by an electric sending unit, with each tank routed through dedicated fuel filters and water separators to ensure clean, consistent delivery. Safety and redundancy are built in with automatic fire extinguishers, engine room and forward bilge flood alarms, automatic bilge pumps and automatic flood pumps, augmented by a manual bilge pump for complete backup. Machinery cooling and optimal airflow are maintained by four 24 volt extractor fans, preserving performance with effortless efficiency.

Electrical

The yacht's electrical installation has been crafted for discreet, dependable operation, centred on a slow-speed generator fitted with an underwater silent exhaust and housed within a dedicated sound box, with the provision to install a second generator should redundancy be required. Dockside shore power is brought aboard via a shore power connection into a galvanic isolator and then distributed to fully protected 24v and 12v circuits with comprehensive circuit breaker coverage; charging is handled through an alternator split-charging arrangement and remote battery switches that can be operated from the cockpit locker for effortless management. Energy reserves are generous, comprising eight engine batteries on the 24v circuit, eight domestic batteries on the 24v circuit and four generator batteries on the 12v circuit, each bank tended by dedicated chargers for the 24v and 12v systems. Comfort systems include an AC water heater and AC sockets located throughout the yacht, while a 24v hand light with cable provides reliable, portable illumination.

Highlights

Milamo is an American specification, U.S. duty paid yacht whose factory options culminate in a rare midship central galley that serves as the heart of a generous social environment. The interior is appointed in timeless Silver Oak Satin joinery set against light Cadorn hardwood floors, while genuine teak decks and a striking black painted hardtop deliver a polished, contemporary exterior-to-interior flow. Ownership pride is apparent at every turn; the yacht has been cared for by the same captain since new and is offered turnkey with all services up to date, including the recently completed 1,000 hour MAN engine service, a full polish and wax, and a comprehensive bottom job carried out in spring 2026.

Underway, performance and comfort are assured by twin MAN V12 engines

rated at 1,550 hp, Zero Speed Vector stabilizer fins, and hydraulic variable bow and stern thrusters operated from an aft control station. Navigation and entertainment are covered by the Platinum Simrad navigation suite together with the full U.S. Platinum and Performance AV packages, providing confident command and immersive onboard leisure. Lifestyle amenities abound, from the flybridge Jacuzzi spa tub and full wet bar with BBQ to the hydraulic swim platform and telescopic gangway, while the four stateroom layout with sliding beds complements the Silver Oak and hardwood interior. Practical upgrades enhance capability and convenience and include a second 29 kW generator, Cablemaster, additional refrigeration with a dedicated wine cooler, a Seafari watermaker, a fitted crew cabin and supplementary underwater lights.

CONTACTS

Shestakov Yacht Sales is a brokerage company specializing in the sale and service of yachts worldwide. The company offers services for buying and selling both new and used motor yachts, sailing vessels, and luxury superyachts. They also provide yacht registration, insurance, technical maintenance, crew selection, and charter organization services across the U.S., Canada, Latin America, the Caribbean, and the Bahamas.

The founder and lead broker of the company is Andrey Shestakov, a licensed and certified expert with extensive experience in marine engineering and shipbuilding.

The company has an extensive network of partnerships with major yacht manufacturers worldwide and provides services in multiple languages, including Russian, Ukrainian, Spanish, and English. The office is in Dania Beach, Florida, USA.

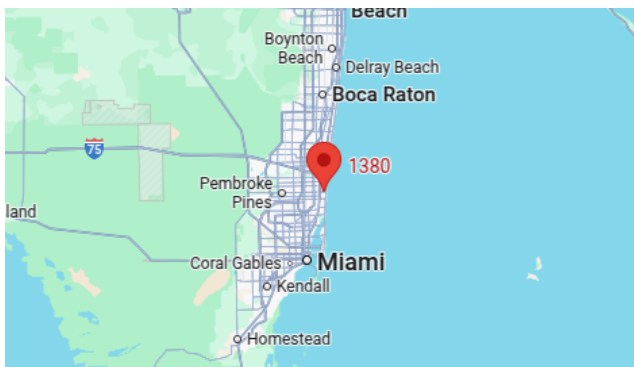
For more information and to view available yachts, you can visit the company's official website: <https://shestakovyachtsales.com>

Contact details

Phone: +1(954)274-4435

Email: andrey@shestakovyachtsales.com

Address



1380 Weeping Willow Way, Hollywood,
Florida 33019