



## CHINONINO - SUNSEEKER



**Builder:** [Sunseeker](#)

**LOA:** 76' 0" (23.16 m)

**Year Built:** 2020

**Beam:** 19' 0" (5.94 m)

**Model:** 76 Yacht

**Max Draft:** 18' 4" (5.58 m)

**Price:** \$3,295,000 USD Subject to change.

**Cruising Speed:** 26 Knots (29.92 MPH)

[See full listing on our website](#)

**Location:** Fort Lauderdale, United States

**Max Speed:** 32 Knots (36.83 MPH)

If you would like to buy a yacht **CHINONINO - SUNSEEKER** or would like help answering any questions concerning purchasing, selling, or chartering a yacht, please call **+1(954)274-4435** or click here on <https://shestakovyachtsales.com>

# TABLE OF CONTENTS

**OVERVIEW ..... 3**

**SPECIFICATIONS ..... 4**

    Basic Information ..... 4

    Dimensions ..... 4

    Speed, Capacities and Weight ..... 4

    Accommodations ..... 5

    Hull and Deck Information ..... 5

    Engine Information ..... 5

**GALLERY ..... 6**

**DETAILED DESCRIPTION ..... 20**

**CONTACTS ..... 27**

## OVERVIEW

---

The Sunseeker 76 Yacht occupies the pinnacle of modern luxury and capability. Blending sinuous lines with meticulous workmanship, Chinonino unfolds generous living spaces, sumptuous accommodations, and commanding performance—tailor-made for discerning owners who value serene retreats as much as exhilarating passages.

Chinonino, a Sunseeker 76, personifies timeless refinement and advanced naval engineering. Meticulously cared for and exquisitely finished, this flybridge motor yacht and luxury cruiser, built with a planing hull, delivers a genuine bluewater performance yacht experience—a clear declaration of style, power, and comfort afloat.

# SPECIFICATIONS

---

## Basic Information

---

**Category:**  
Motor yachts

**Year Built:**  
2020

**Sub category:**  
Motor Yacht

**Country:**  
United States

**Model Year:**  
2020

## Dimensions

---

**LOA:**  
76' 0" (23.16 m)

**Max Draft:**  
18' 4" (5.58 m)

**Beam:**  
19' 0" (5.94 m)

## Speed, Capacities and Weight

---

**Cruise Speed:**  
26 Knots (29.92 MPH)

**Water Capacity:**  
370 Gallons

**Max Speed:**  
32 Knots (36.83 MPH)

**Fuel Capacity:**  
1585 Gallons

## Accommodations

---

**Total Heads:**

4

**Crew Cabin:**

2

## Hull and Deck Information

---

**Hull Material:**

Fiberglass and Plastic Yachts

**Hull Designer:**

N/A

**Deck Material:**

Fiberglass

**Interior Designer:**

N/A

**Hull Configuration:**

N/A

## Engine Information

---

**Engines:**

2

**Engine Type:**

Inboard

**Manufacturer:**

MAN

**Fuel Type:**

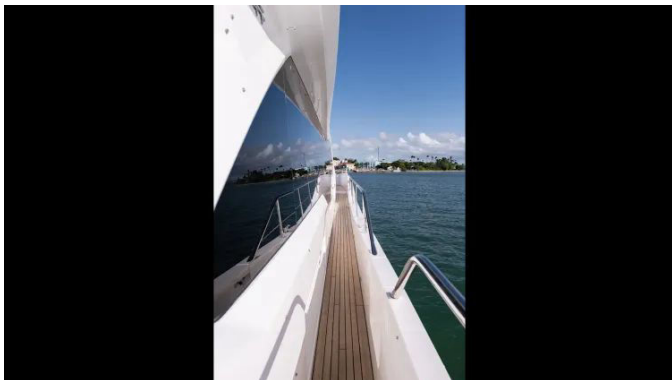
Diesel

# GALLERY

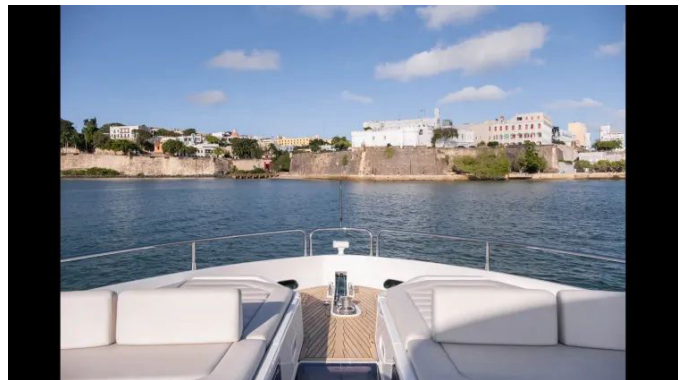
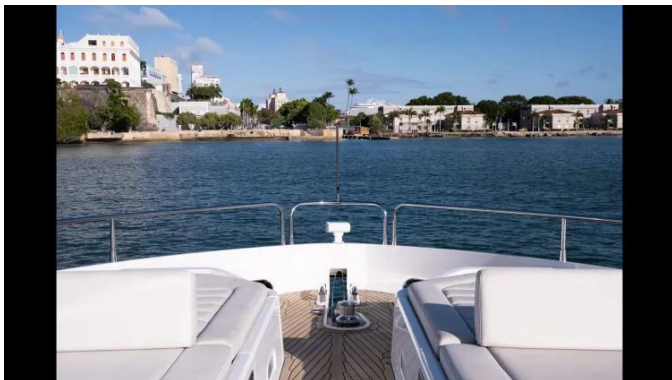


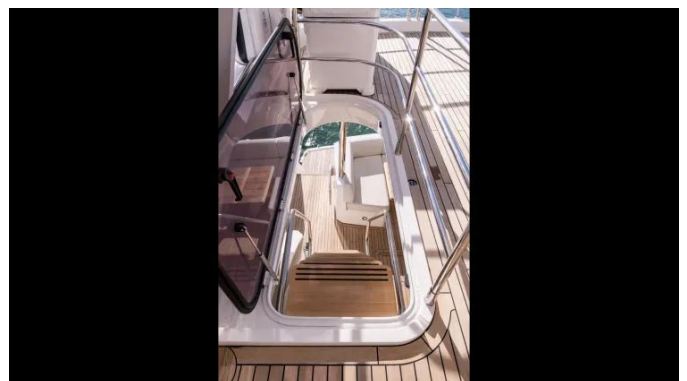
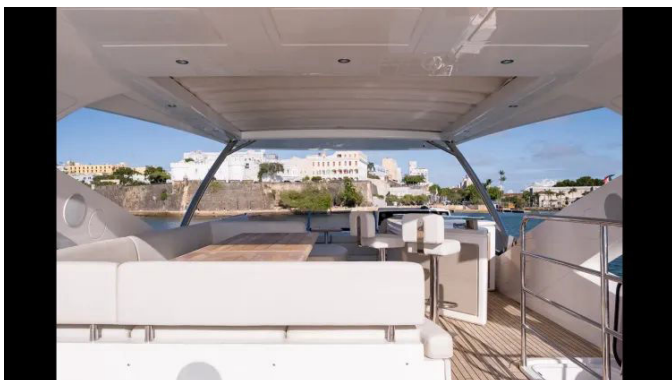
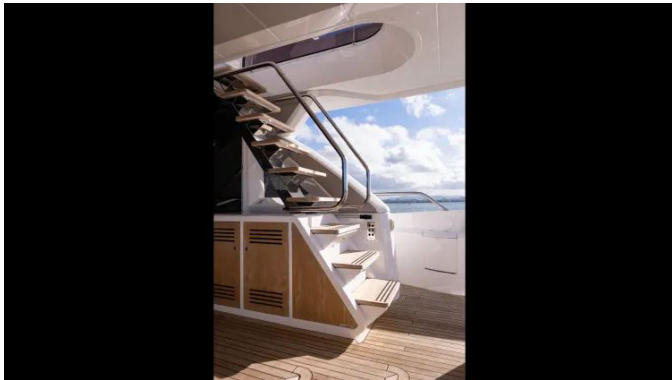




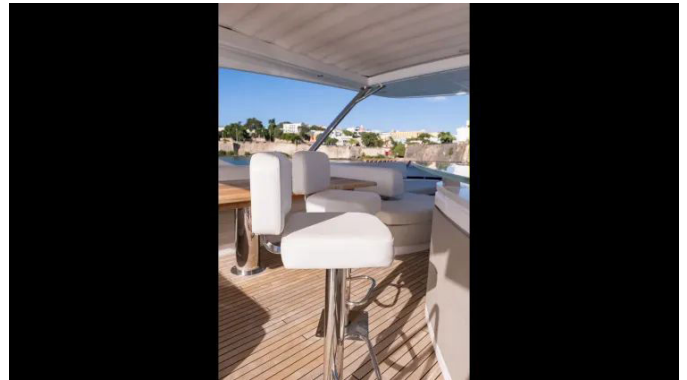












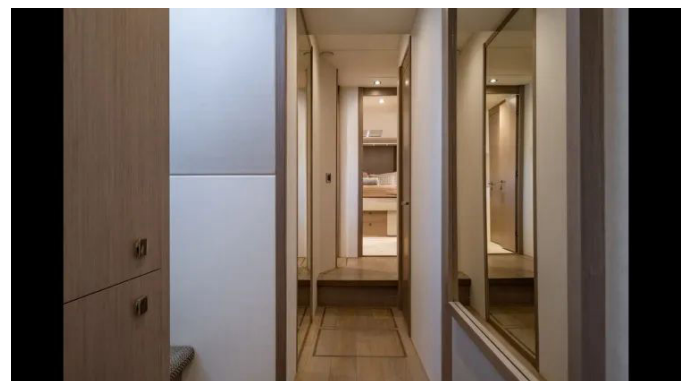
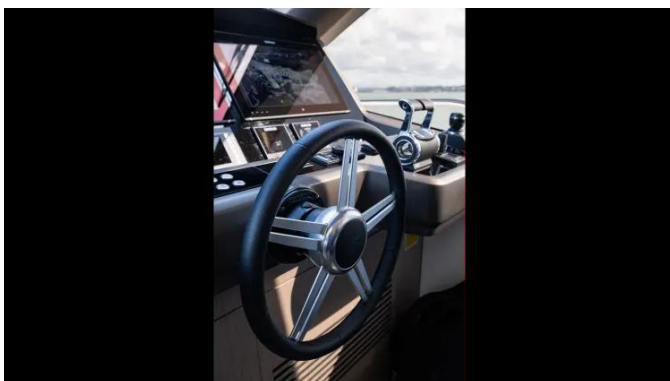
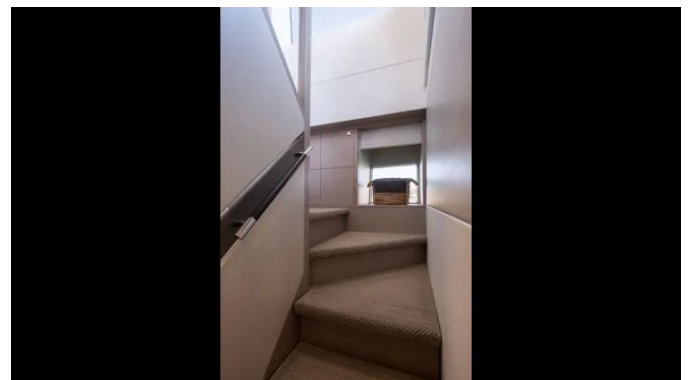




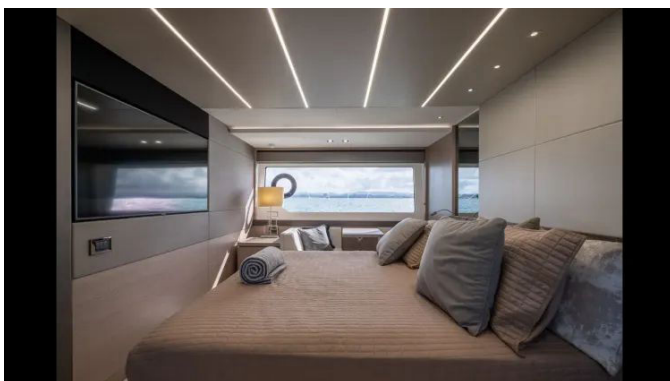
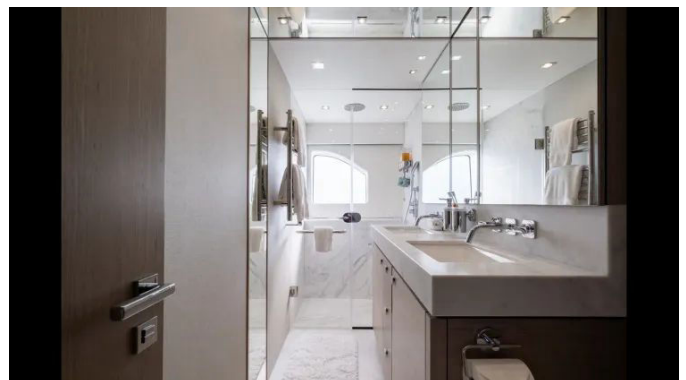


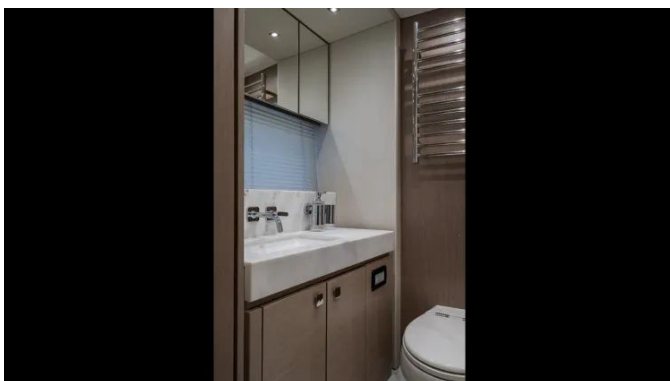
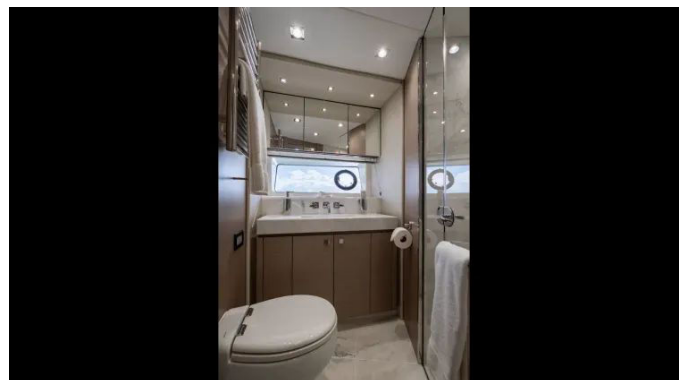


















# DETAILED DESCRIPTION

---

## Sunseeker 76 Yacht description

---

The Sunseeker 76 Yacht delivers everything you expect from a contemporary flybridge yacht, combining exceptional sea keeping and the latest deep V hull design with class leading volume across beautifully appointed decks; she carves a striking silhouette on the horizon while an expanse of glass floods the interior with sunlight and the main deck invites effortless entertaining with an almost 360 degree panorama of the seascape. Devoted to al fresco living, the expansive flybridge offers unprecedented space and flexibility so you can tailor every social moment to your preferences, while the adaptable cockpit can be configured with additional lounge seating or a sophisticated cocktail bar and at the stern a thoughtfully conceived mini beach club adds a barbecue grill, fold out seating, and a rain shower—perfect for hosting family and friends. The extended bathing platform welcomes a 14' tender with ease alongside SeaBobs and other water toys, and the intelligent foredeck layout continues the yacht's habit of maximizing gatherings with large twin sunbeds, fore and aft seating, and optional refrigeration, making every hour on deck an invitation to savor the water. Easy to view in Harbour Towne Marina, she is a compelling invitation to experience the Sunseeker difference.

## Main description

---

"Chinonino" has been maintained by a full time professional crew from day one under the guidance of an experienced owner who insists the yacht remains in top condition at all times, presenting four staterooms and four heads for guests while accommodating up to three crew. She shows under 1100 hours on twin MAN 1550 engines and benefits from a hydraulic Sleipner hull stabilizer with Vector Fins, hydraulic Sleipner bow and stern thrusters, and

a panoramic sliding sunroof set into the flybridge brow that bathes the main deck in natural light and fresh air. A hydraulic swim platform rated to lift 550 kg or 1212 lbs carries the new 2025 Walker Bay 14' tender and streamlines every waterside moment with confident ease. See the additional description for a comprehensive list of updates and services completed in 2025. Currently moored in San Juan, Puerto Rico, the owner will consider sending the yacht to South Florida — Miami or Fort Lauderdale — to accommodate a serious buyer with an acceptable purchase agreement and full deposit in escrow; otherwise all interested parties are warmly welcomed to visit and preview this spectacular yacht in the beautiful, vibrant, and endlessly interesting city of San Juan, Puerto Rico, which as a U.S. territory enjoys frequent, affordable nonstop flights from MIA and FLL daily. This stunning Sunseeker 76 Yacht "Chinonino" is now available for sale and, with a growing family, the seasoned owner is ready to move up.

## Main features

---

Built with a GRP hull using hand laid fiberglass and accented by stainless steel fittings and teak laid decks, this yacht combines structural strength, refined finishes, and timeless style; the flybridge pairs a commanding dual helm vantage with a convivial wet bar and grill, while the expansive salon centers around a 55" TV and a formal dining area for eight. A fully equipped galley with Miele appliances and granite countertops ensures every culinary moment aboard is as effortless as it is elegant.

## Premium packages

---

The Platinum Package elevates on board comfort and capability with Sleipner stabilizers, a hardtop with a retractable canopy, dual generators, upgraded thrusters, comprehensive LED lighting, full teak decks, a wine cooler, and

more—each element curated to refine the cruising experience and extend your range of comfort. The Beach Club Package transforms the transom into a waterside lounge with fold down platform seating, a dedicated marine grill workstation, and an overhead shower, inviting uninterrupted days at the water's edge and turning the stern into a private seaside retreat.

## Performance and entertainment

---

A full Simrad navigation suite at both stations underpins confident passagemaking and precise maneuvering, while Sonos multi zone audio with B&W speakers and Samsung TVs in all cabins deliver immersive entertainment throughout the yacht; a robust Wi-Fi/4G connectivity system with dual SIM capability keeps you seamlessly connected at sea and in port, ensuring streaming, communications, and navigation remain reliable wherever the voyage leads.

## Options

---

Every detail of the options specification is tuned for effortless yachting: a hydraulic swim platform with a 550 kg lift simplifies tender operations and is complemented by a hydraulic telescopic gangway measuring 5 m or 16'5", while a watermaker producing 180 L/h extends autonomy and a tropical air conditioning upgrade ensures cool serenity in any climate. Docking becomes instinctive with a joystick system, assisted by a hydraulic Sleipner SP300HYD/U 16 bow thruster rated at 23.3 hp and a hydraulic Sleipner SH240/250TC U11 stern thruster at 20 hp, both fitted with simultaneous dual proportional controls for precision. Long range comfort is further enhanced by the hydraulic Sleipner SPS66B hull stabiliser unit with Vector Fin VF1050 fins measuring 1.05 metres, driven underway from hydraulic pumps on both gearboxes and, at anchor, by a 7.5 kW AC motor powered by the generator.

Underwater illumination is striking and practical with white Lumishore TIX202 LED units—eight in total, with four on the transom and two per side aft—perfectly complementing the additional specification of underwater LED lights totaling eight. The flybridge hardtop integrates an electric retractable centre canopy and an aft electric awning, and the panoramic sliding sunroof in the flybridge brow floods the saloon with light and ventilation. Teak side and foredecks—including the anchor deck and the seating group deck—add warmth underfoot, while the beach club option at the transom brings a dedicated seat, grill, and overhead shower together. Shore power is neatly handled by a Gendinning Cablemaster for 120/240 V, 60 Hz, 100 A AC with powered feed and recovery, plus a second 120/240 V, 60 Hz, 50 A AC shore power socket. Daily life aboard is elevated by a platform overhead shower fitted to the gull wing door and a Marine Can PB1328 electric grill integrated into a drop down workstation.

## Interior layout

---

The accommodation plan centers on a full beam master suite with panoramic windows and an ensuite bathroom, a forward VIP cabin with ensuite, and two additional guest cabins each with their own ensuite, while the crew enjoy independent access and dedicated facilities for discreet service. Craftsmanship shines throughout with a GRP hull in hand laid fiberglass, stainless steel fittings, and teak laid decks; above, the flybridge presents dual helm stations, a convivial wet bar and grill, and the salon creates a welcoming epicenter with a 55" TV and a formal dining arrangement for eight. The galley, fitted with Miele appliances and granite counters, is both a showpiece and a hardworking culinary hub.



## Exterior moldings & options

---

The hull, deck, hull band, platform, engine air vents, and the flybridge hardtop are all molded in pristine white, creating a crisp, modern presence on the water, while a jet black boot stripe at the top line delivers a sharp visual contrast that accentuates the yacht's sleek proportions.

## Foredeck

---

Forward, a black mesh windscreen cover protects the glazing, while a Norton Marine Monte Carlo parasol measuring 3 m with an offset post, finished in white, casts generous shade over the foredeck lounge. Ground tackle is robust with a Lewmar 50 kg Delta stainless steel anchor and 90 meters of 12 mm stainless steel chain served by a Lewmar V6GD 24 V windlass. Comfort flows from plush bow sunbathing cushions to a teak foredeck table with a fixed top on a polished stainless steel leg, and teak continues across the side and foredecks, including the anchor deck and the seating group deck.

Entertainment and refreshment are ever present thanks to two Sonance VPXT6R Extreme speakers driven by a Sonos Connect and amplifier for wireless streaming, and twin Webasto Isotherm Cruise 36 drawer refrigerators, 24 V with 36 liter capacity and stainless steel fronts. Low level LED deck lighting in white highlights the seating group and ten white low level LED side deck lights per side elegantly illuminate the walkways. A fresh water deck wash outlet adds practical convenience after every anchorage.

## Cockpit

---

A teak soled lower cockpit sets a welcoming tone, anchored by a teak aft table with a folding top on a polished stainless steel leg. Sound carries crisply outdoors via four Sonance VPXT6R speakers powered by a Sonos Connect and

amplifier with wireless streaming, and refreshments are close at hand with a Waeco Coolmatic 80 liter CR 0080E refrigerator and a Vitrefrigo stainless steel ice maker with water purifier. Maneuvering is simplified with a third engine control station in the aft cockpit complete with engine throttles, while Lewmar C3 stern docking winches are fitted port and starboard for confident line handling. Practical touches include a 12 volt dinghy inflator and socket, white low level LED deck lighting for the aft cockpit and the steps to the platform, and dimmer switches for interior and exterior overhead lighting to set the perfect mood day or night.

## Chinonino recent maintenance projects

---

Recent works underscore disciplined care and continuous renewal: the windshield gelcoat frame has been redone; bow teak has been replaced; and all exterior canvas has been renewed with new waterproof covers. Inside, the main saloon couch and the master stateroom couch have been reupholstered, and all interior headliners in the main saloon have been renewed. Connectivity has been elevated with a Wi-Fi system upgrade to Ubiquity and the installation of a Starlink marine system. Entertainment updates include replacement of the TVs in the VIP and starboard cabins. In the galley, a new oven has been installed and the cooktop has been newly fitted. The yacht's exterior has been waxed and polished every six months, while fresh bottom antifoul and PropSpeed were applied in November 2025. The MAN engines received their 1000 hour service, including coolant heat exchanger cleaning; the starboard side oil gasket has been replaced; and port side turbos and coolant were replaced in October 2025. Both generators have undergone full heat exchanger cleaning and complete servicing. The Side Power stabilizer systems have been completely serviced with new hydraulic rams and components, and the fins were serviced during a recent yard period in Fort Lauderdale in July 2025. New hydraulic hoses were installed on the swim

platform in July 2025. The tender has been upgraded to a new Walker Bay Venture 14' with a Yamaha 70 hp outboard. Teak sanding and a complete restoration were completed in July 2025, a new flybridge sunroof canvas was fitted in November–December 2025, and the full air conditioning system received comprehensive servicing in August 2025 alongside hot water tank service the same month.

## **Additional unit- tender**

---

Included is a 2025 Walker Bay Venture 14 tender, serial number EWWVE327I425, valued at \$60,000.00, completing the perfect on the water companion set for "Chinonino."

## **Disclaimer**

---

The details of this yacht are offered in good faith, but accuracy cannot be guaranteed and no warranty is made regarding the vessel's condition; this yacht is offered subject to prior sale, price change, or withdrawal from the market without notice. The information is provided as a convenience by the broker to clients and is not intended to convey direct representation of a specific yacht for sale.

# CONTACTS

---

Shestakov Yacht Sales is a brokerage company specializing in the sale and service of yachts worldwide. The company offers services for buying and selling both new and used motor yachts, sailing vessels, and luxury superyachts. They also provide yacht registration, insurance, technical maintenance, crew selection, and charter organization services across the U.S., Canada, Latin America, the Caribbean, and the Bahamas.

The founder and lead broker of the company is Andrey Shestakov, a licensed and certified expert with extensive experience in marine engineering and shipbuilding.

The company has an extensive network of partnerships with major yacht manufacturers worldwide and provides services in multiple languages, including Russian, Ukrainian, Spanish, and English. The office is in Dania Beach, Florida, USA.

For more information and to view available yachts, you can visit the company's official website: <https://shestakovyachtsales.com>

## Contact details

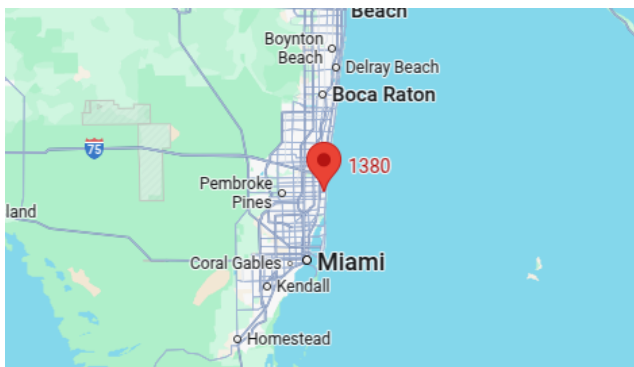
---

**Phone:** +1(954)274-4435

**Email:** [andrey@shestakovyachtsales.com](mailto:andrey@shestakovyachtsales.com)

## Address

---



1380 Weeping Willow Way, Hollywood,  
Florida 33019