



SHESTAKOV

Yacht Sales

DESTINY - FIFTH OCEAN SHIPYARD



Builder: [FIFTH OCEAN SHIPYARD](#)

LOA: 79' 0" (24.08 m)

Year Built: 2014

Beam: 22' 0" (6.71 m)

Model: 24m Long Range Explorer

Min Draft: 19' 8" (6 m)

Price: \$2,450,000 USD Subject to change.

Max Draft: 23' 0" (7 m)

[See full listing on our website](#)

Location: Miami, United States

Cruising Speed: 7.50 Knots (8.63 MPH)

Max Speed: 11.50 Knots (13.23 MPH)

If you would like to buy a yacht **DESTINY - FIFTH OCEAN SHIPYARD** or would like help answering any questions concerning purchasing, selling, or chartering a yacht, please call **+1(954)274-4435** or click here on <https://shestakovyachtsales.com>

TABLE OF CONTENTS

OVERVIEW	3
SPECIFICATIONS	6
Basic Information	6
Dimensions	6
Speed, Capacities and Weight	6
Accommodations	7
Hull and Deck Information	7
Engine Information	7
GALLERY	8
DETAILED DESCRIPTION	23
CONTACTS	30

OVERVIEW

DESTINY – Fifth Ocean Yachts 24m Explorer Yacht

DESTINY is a bespoke 24-metre explorer motor yacht from Fifth Ocean Yachts / Fifth Ocean Shipyard in Ukraine, launched in 2014 and embodying the shipyard's dedication to sturdy, pragmatic bluewater craft designed for autonomy and comfortable, long-distance cruising. Built with a steel hull and an aluminium superstructure, she was conceived as a compact yet purposeful displacement explorer, her exterior lines and naval architecture by Ginton Naval Architects presenting a resolute, seaworthy profile that favours endurance over fleeting speed. Where many yachts of comparable length are tuned for sprinting between short hops, DESTINY appeals to owners prioritising range, safety, fuel efficiency and the ability to remain at sea for extended periods.

At approximately 23.9 metres / 78 feet 5 inches overall with a beam of about 6.65 metres / 21 feet 10 inches, DESTINY delivers generous internal volume for her size. The broad beam, true displacement hull form and well-considered layout combine to produce a composed and comfortable platform for private cruising, intimate family voyages or limited charter use, all with the practicality of a trawler-style yacht and the presence of an expedition vessel. Her steel structure provides durability and longevity while the aluminium superstructure reduces weight aloft, improving stability and efficiency — a traditional and proven combination favoured by serious long-range owners who value structural integrity and seakeeping above fashionable trends.

Twin Caterpillar diesel engines supply the propulsion, giving an efficient cruising profile and a top speed in the region of 11–11.5 knots. Coupled with substantial fuel reserves and economical displacement performance, she is ideally configured for extended itineraries where operational economy, reliability and range outweigh the need for high speed, reflecting the true spirit

of an expedition motor yacht. Accommodation is arranged to sleep 7–8 guests in 4 cabins depending on configuration, including a full-beam owner's suite, a VIP stateroom and well-proportioned additional cabins, each designed for privacy and comfort with practical storage solutions and ensuite facilities that make the yacht well suited to liveaboard life during longer passages or seasonal cruising.

The interior environment balances seamanlike practicality with a relaxed, residential ambience. The main saloon serves as an inviting social centre for conversation, dining and quiet relaxation, while generous windows flood the living areas with daylight and maintain a strong visual connection to the sea. Outside, alfresco life is equally well considered: the aft deck affords dining with a view, while the upper and sun decks offer sheltered and open spaces for lounging, reading and enjoying the breeze from dawn till dusk — ideal for Mediterranean hopping, island exploration and slow, lingering days at anchor. Dedicated crew accommodation is integrated, enabling professional operation to high standards and preserving owner and guest privacy while ensuring attentive service and safe, efficient running on every passage. From a brokerage perspective, DESTINY distinguishes herself as a custom compact explorer rather than a production motor yacht, combining robust build quality, sensible engineering and a characterful demeanour. For clients seeking a long-range displacement yacht, she presents a rare mix of manageable size, steel construction, generous comfort and genuine cruising capability.

DESTINY will particularly resonate with owners who desire more than a weekend boat: those drawn to authentic sea travel, longer legs between ports, unhurried displacement cruising, extended life aboard and the reassurance of a strong, ocean-capable hull. Set alongside faster fibreglass yachts in her class, she offers a contrasting ownership experience that privileges substance over speed — strength, autonomy, range, comfort and safety — making her an appealing choice for buyers considering explorer, compact expedition,

trawler-style or other long-range displacement yachts.

In summary, DESTINY is a distinctive 24-metre explorer yacht combining solid Ukrainian craftsmanship, European naval architecture and a pragmatic layout tailored to serious cruising, encapsulating the Fifth Ocean Yachts vision of a robust, efficient and comfortable bluewater cruiser for owners who wish to travel further, stay out longer and savour the sea with confidence.

SPECIFICATIONS

Basic Information

Model Year:
2014

Country:
United States

Year Built:
2014

Dimensions

LOA:
79' 0" (24.08 m)

Beam:
22' 0" (6.71 m)

Min Draft:
19' 8" (6 m)

Max Draft:
23' 0" (7 m)

Speed, Capacities and Weight

Cruise Speed:
7.50 Knots (8.63 MPH)

Water Capacity:
1400 Gallons

Max Speed:
11.50 Knots (13.23 MPH)

Fuel Capacity:
4491 Gallons

Gross Tonnage:
140 Pounds

Accommodations

Total Heads:

4

Crew Cabin:

2

Hull and Deck Information

Hull Material:

Steel Yachts

Hull Designer:

N/A

Deck Material:

Steel

Interior Designer:

N/A

Hull Configuration:

Displacement w Bulbous Bow

Engine Information

Engines:

2

Engine Type:

Inboard

Manufacturer:

Caterpillar

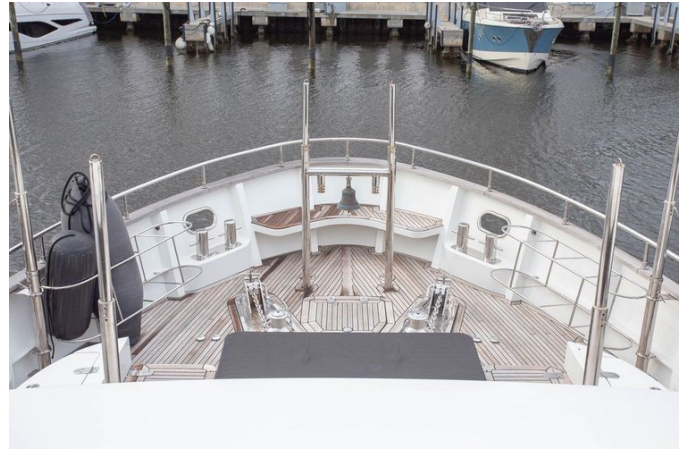
Fuel Type:

Diesel

GALLERY

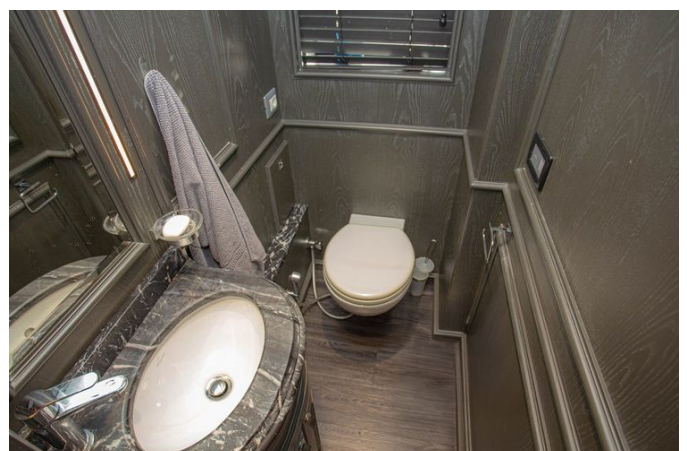








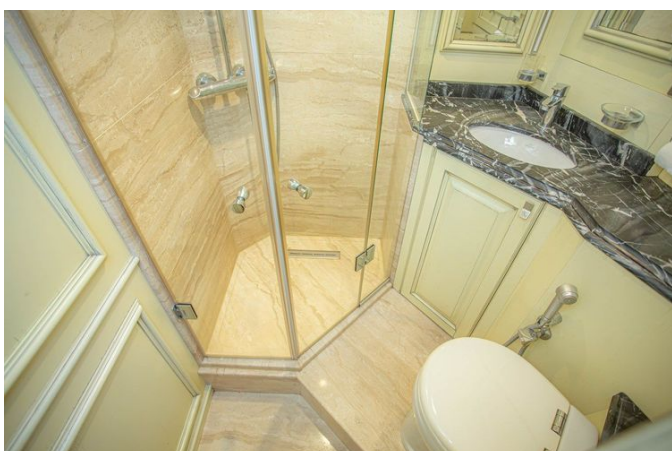


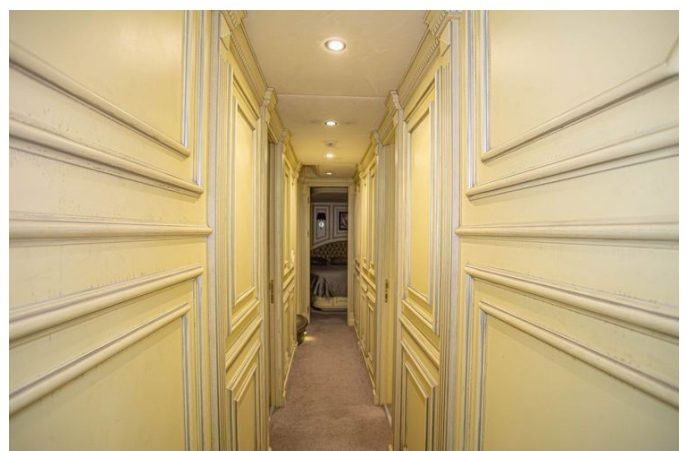
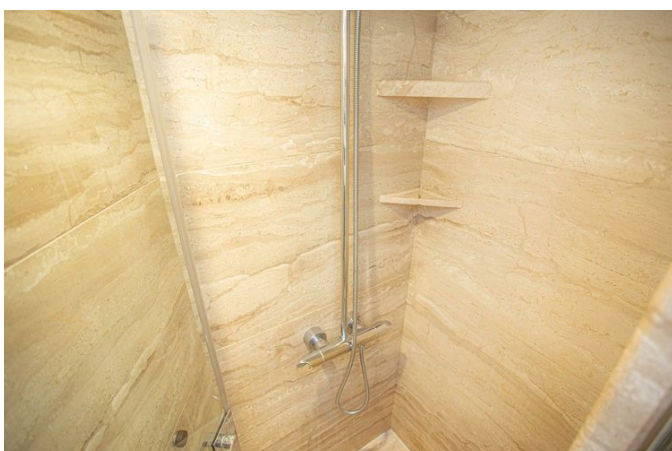


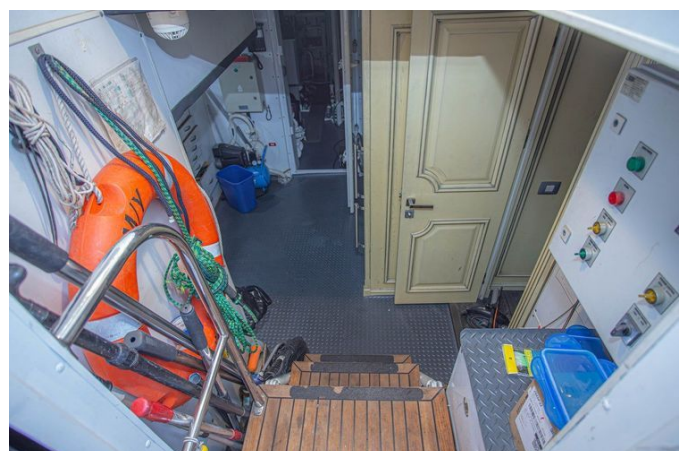


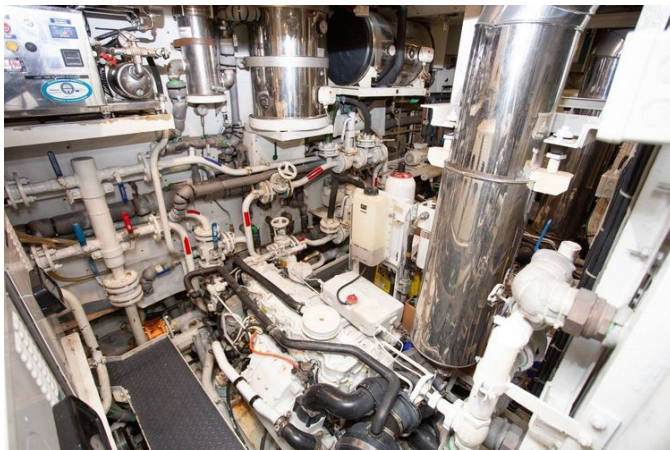


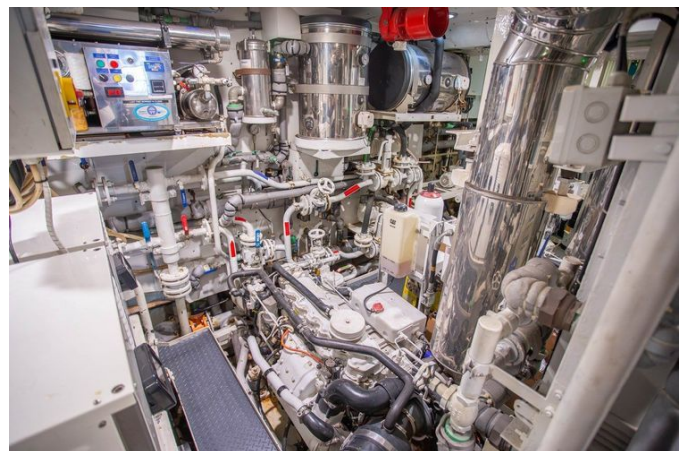
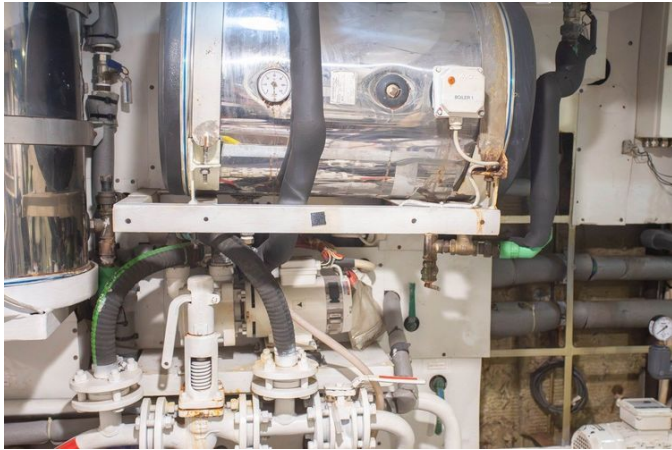














DETAILED DESCRIPTION

Wheelhouse / pilothouse & navigation equipment

Designed for extended passages and precise handling in close quarters alike, DESTINY's wheelhouse is positioned forward and wrapped in expansive glazing to provide panoramic visibility. Those sweeping windows deliver unobstructed sightlines in every direction, offering the captain clear perspective whether steering offshore, threading into a marina or negotiating tight channels.

A bespoke helm console creates an uncluttered, professional workspace with every essential control thoughtfully positioned for immediate access. Warm wood veneers, custom cabinetry and fully integrated electronics combine to form an interior that is both elegant and highly functional, reflecting the yacht's explorer spirit while projecting a confident, professional command-center atmosphere.

The pilothouse is appointed with a supportive helm chair and adjoining seating that encourage shared watchkeeping, transforming the space from a technical hub into an inviting observation salon for guests during extended passages.

DESTINY's navigation and sensor suite is comprehensive and optimized for serious offshore use. The electronic backbone includes multiple Raymarine multifunction displays — two 15.4-inch Raymarine e165 units plus an additional 15.4-inch Raymarine e165 multifunction display fitted with EU cartography — anchored by a Raymarine RS130 GPS receiver. Depth and fish-finding capability are provided by a Raymarine DSM300 digital sounder module with HD digital technology and a Raymarine SS270W wide-beam depth transducer, while vessel instrumentation is delivered through a Raymarine i70 display, a Rotavecta wind transducer and a CS4500 LP ultrasonic speed sensor. For radar coverage and vessel monitoring, the yacht carries a 4 kW, 48-inch HD digital open-array radar together with a Raymarine AIS650 and a Raymarine

Lifetag system, ensuring enhanced situational awareness. Autopilot authority is supplied by a Raymarine SmartController wireless autopilot, complemented by a Raymarine p70R autopilot controller and an SPXSOL SmartPilot core pack to maintain steady, reliable tracking on long offshore legs.

Communication and entertainment provisions include a Raymarine Ray218E fixed VHF, a Raymarine Ray101E handheld VHF, a FleetBroadband SAILOR 150 system and a SAILOR 60 satellite TV installation. Offshore safety instruments comprise a Satellite 406 MHz EPIRB SAILOR SE406-II, a SAILOR SART, a Thrane & Thrane Navtex receiver and a Furuno NX-300.

Supplementary environmental and safety aids such as an Ultrasonic WX-200 weather station and a MARCO marine whistle further support informed decision-making in variable conditions. Altogether, DESTINY's wheelhouse stands as a fully equipped, meticulously appointed command center that enhances operational efficiency, instills confidence in navigation and elevates the comfort of long-range cruising—an arrangement that underlines the yacht's role as a dependable, capable explorer-class offshore platform.

Accommodation areas & entertainment system

DESTINY's lower deck accommodation has been arranged to comfortably sleep up to seven guests, with a plan that prioritises privacy, functionality and extended periods aboard, making her equally suited to family cruising, private ownership and guests who favour individual ensuite cabins. The full beam owner's suite occupies a generous position, offering a comfortable berth, a sofa seating area, a vanity, a walk in wardrobe and a private ensuite shower room; the configuration provides abundant storage, a tranquil ambience and the refinement expected of a long range cruising yacht. Forward, the VIP cabin presents a gracious guest suite with a full length wardrobe and its own ensuite shower room, delivering discreet comfort for principal visitors without compromising practical use. Guest quarters are completed by a twin cabin to

port and a single cabin to starboard, each appointed with full length wardrobes and private ensuite showers so that every guest benefits from independent, well equipped accommodation. For professional operation and discreet service, DESTINY carries two double crew cabins accommodating up to four crew members, allowing owners and guests to enjoy privacy and attentive support during passages.

An integrated audio visual and entertainment specification enhances every living area aboard. Each cabin is equipped with a Samsung Smart TV and is connected to the yacht's multiroom movie and music library via an AMX media server, enabling entertainment to be accessed from multiple locations on board. The main salon and owner's cabin are fitted with Samsung TVs and complemented by Bose speakers to deliver a superior listening and viewing experience in the principal living spaces, while built in Bose speakers extend coverage to the crew cabins, galley, all guest bathrooms and the master bathroom for consistent audio throughout the interior. External areas, including the aft main deck and the flybridge deck, are also fitted with integrated Bose speakers so that music and media flow effortlessly between inside and out.

DESTINY's entertainment package comprises a Smart LED TV, SAT TV and a multiroom AMX media server providing access to the yacht's movie and music library from all rooms, together with a smart entertainment system controllable via iPad, iPhone and iPod. A discreet pop up Samsung TV in the salon preserves the clean, elegant lines of the interior when not in use. For onboard communications, a Panasonic PBX system is installed in the wheelhouse and Bang & Olufsen telephones are fitted in every room, enhancing convenience and connectivity throughout the vessel. Taken together, the accommodation layout and AV specification create a private, comfortable and comprehensively equipped environment that underlines DESTINY's credentials as a serious cruising yacht for extended stays.

Exterior deck areas

The exterior decks of DESTINY are crafted around the same pragmatic explorer-yacht philosophy that shapes the rest of the vessel. Broad stretches of teak underfoot, tall stainless-steel safety rails, sheltered walkways and abundant alfresco spaces combine to provide a secure, comfortable environment for guests and crew whether the yacht is making way, at anchor or tied up alongside.

Viewed from the water, DESTINY presents a deliberate, timeless silhouette, her dark hull set against a white superstructure punctuated by expansive panoramic glazing that speaks to her long-range cruising pedigree. A prominent bow, elevated bulwarks and wide side decks reflect her sturdy build and offshore credentials, while the open deck layout ensures exceptional usability throughout the yacht.

Aft deck

Sheltered beneath the overhang of the upper deck, DESTINY's aft deck offers a shaded, elegant alfresco retreat crafted for dining, repose and sociable entertaining. A plush, built-in upholstered seating run embraces a central teak dining table, providing a refined and practical setting for relaxed meals or intimate gatherings with family and guests.

Teak underfoot, polished stainless-steel supports and the pristine white of the superstructure combine to evoke a bright, timeless yachting ambience. Expansive glass doors open straight into the main salon, allowing a fluid transition between interior and exterior spaces and making the aft deck perfect for a leisurely breakfast at anchor, sunset cocktails, or unhurried dinners with marina or open-sea vistas.

A staircase from this area ascends to the upper deck for immediate access to further outdoor entertainment zones, while broad side decks sweep forward

from this level to guarantee safe, convenient passage around the yacht.

Side decks

DESTINY's side decks are laid in rich teak and run uninterrupted along both flanks of the main deck, creating broad, inviting walkways. Raised stainless steel handrails and substantial bulwarks line these passages, providing confident, comfortable access between the aft deck, the foredeck and all operational zones. Generous tinted glazing integrated into the superstructure floods the interiors with natural light while giving the exterior a clean, contemporary silhouette. Strategically sheltered stretches of deck afford protection from sun and weather, so guests and crew alike can move about with assurance in varying conditions. True to her explorer spirit, these decks serve as efficient working platforms for the crew, simplify line handling and ensure secure guest circulation; on DESTINY they are deliberately wide, solid underfoot and thoughtfully arranged, a clear expression of her serious long range cruising capability.

Upper deck / bridge deck

The upper deck is conceived as an elegant outdoor living and service platform, its teak-laid decking providing a refined backdrop. A fully integrated outdoor galley and barbecue station anchors the area, fitted with a stainless-steel grill, expansive countertop surfaces, a sink and purpose-built storage to form a highly capable preparation and serving centre for alfresco dining. Whether for leisurely midday meals, evening barbecue gatherings or relaxed time aboard while at anchor, the open arrangement delivers excellent sightlines around the yacht and a flexible environment that balances guest comfort with operational utility. The deck also accommodates dedicated storage plus tender and toy handling space, with visible equipment storage and open working zones

designed to streamline deck operations. Polished stainless-steel railings and robust deck hardware complete the composition, reinforcing the vessel's practical, ocean-going character.

Foredeck / bow area

The foredeck of DESTINY presents a broad, purpose-built working platform, surfaced in teak and equipped with substantial stainless-steel deck hardware. Heavy-duty windlasses, anchoring equipment, fairleads and cleats sit alongside elevated safety rails, each element positioned for reliable and efficient anchoring operations.

Evoking the spirit of an explorer yacht, the bow is engineered for durability and practical use, offering ample room for crew to operate safely during anchoring, mooring or line handling. High bulwarks and stainless-steel rails augment onboard security, while the teak decking lends a timeless, classic yacht aesthetic.

Forward seating and seamlessly integrated deck details introduce a refined contrast to the area's functional purpose, balancing utility with visual elegance. The overall configuration underscores DESTINY's long-range cruising intent, where secure deckwork and rugged, dependable equipment are fundamental.

Swim platform / stern area

At the stern, DESTINY reveals a multifunctional swim platform and a dedicated boarding area designed for effortless embarkation whether arriving from a dock or the sea. The platform's robust, purposeful lines reflect the yacht's explorer lineage, while sturdy stainless-steel railings and carefully configured boarding arrangements ensure secure movement when coming aboard. The broad transom functions as an effective staging zone for watersports, provides straightforward access to the tender and allows for smooth boarding alongside

a quay.

When at anchor, the swim platform enhances everyday onboard living, inviting guests to swim, partake in water activities and step into tenders with minimal fuss. These practical, well-considered arrangements underline DESTINY's role as a cruising yacht engineered for extended periods afloat.

Overall exterior impression

Throughout her exterior, DESTINY reveals expansive, purpose-designed spaces that support true long-range cruising, marrying guest-focused comfort with thoughtful operational practicality. Generous teak decking runs from stern to bow, while well-appointed entertainment areas sit alongside secure walkways and substantial deck fittings to accommodate serious seafaring. The shaded aft deck provides an elegant alfresco dining venue perfect for lingering meals at sea, and the upper deck is arranged to host a fully functional barbecue and lively social gatherings. Wide side decks allow safe, unimpeded movement around the yacht, and the foredeck is laid out to facilitate heavy-duty anchoring and efficient line handling. Together, these open-air environments confirm DESTINY's explorer-yacht persona—sturdy, comfortable, eminently practical and equipped for extended voyages.

Disclaimer

Shestakov Yacht Sales provides the information below in good faith for the benefit of our distinguished clientele, yet cannot guarantee its absolute accuracy or warrant the present condition of the vessel. This yacht remains subject to prior sale, adjustment of price, or removal from the market without notice. All particulars are supplied as a courtesy and are not intended to constitute a formal representation of any specific vessel for sale.

CONTACTS

Shestakov Yacht Sales is a brokerage company specializing in the sale and service of yachts worldwide. The company offers services for buying and selling both new and used motor yachts, sailing vessels, and luxury superyachts. They also provide yacht registration, insurance, technical maintenance, crew selection, and charter organization services across the U.S., Canada, Latin America, the Caribbean, and the Bahamas.

The founder and lead broker of the company is Andrey Shestakov, a licensed and certified expert with extensive experience in marine engineering and shipbuilding.

The company has an extensive network of partnerships with major yacht manufacturers worldwide and provides services in multiple languages, including Russian, Ukrainian, Spanish, and English. The office is in Dania Beach, Florida, USA.

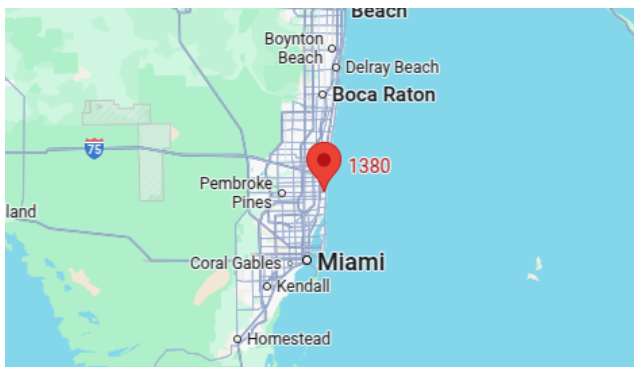
For more information and to view available yachts, you can visit the company's official website: <https://shestakovyachtsales.com>

Contact details

Phone: +1(954)274-4435

Email: andrey@shestakovyachtsales.com

Address



1380 Weeping Willow Way, Hollywood,
Florida 33019