



SHESTAKOV

Yacht Sales

DESTINY - FIFTH OCEAN SHIPYARD



Builder: [FIFTH OCEAN SHIPYARD](#)

LOA: 79' 0" (24.08 m)

Year Built: 2014

Beam: 22' 0" (6.71 m)

Model: 24m Long Range Explorer

Min Draft: 19' 8" (6 m)

Price: \$2,450,000 USD Subject to change.

Max Draft: 23' 0" (7 m)

[See full listing on our website](#)

Location: North Miami, United States

Cruising Speed: 7.50 Knots (8.63 MPH)

Max Speed: 11.50 Knots (13.23 MPH)

If you would like to buy a yacht **DESTINY - FIFTH OCEAN SHIPYARD** or would like help answering any questions concerning purchasing, selling, or chartering a yacht, please call **+1(954)274-4435** or click here on <https://shestakovyachtsales.com>

TABLE OF CONTENTS

OVERVIEW	3
SPECIFICATIONS	5
Basic Information	5
Dimensions	5
Speed, Capacities and Weight	5
Accommodations	6
Hull and Deck Information	6
Engine Information	6
GALLERY	7
DETAILED DESCRIPTION	25
CONTACTS	32

OVERVIEW

DESTINY is a 24-metre bespoke explorer motor yacht constructed by Fifth Ocean Yachts / Fifth Ocean Shipyard in Ukraine and delivered in 2014, embodying the yard's commitment to robust, long-range vessels that prioritize seaworthiness, autonomy and refined comfort for extended time at sea. Built with a steel hull and an aluminium superstructure, she presents as a compact yet highly capable displacement yacht whose exterior and naval architecture, penned by Ginton Naval Architects, give her a purposeful, enduring profile designed for true passagemaking rather than short, high-speed hops.

At approximately 23.9 metres (78 ft 5 in) overall with a beam of about 6.65 metres (21 ft 10 in), DESTINY offers generous interior volume for her size; the wide beam, displacement hull form and considered internal arrangement provide a stable and comfortable platform for private cruising, family voyages or a modest charter program. Her construction philosophy — steel below for strength and longevity with aluminium above to reduce weight aloft — is typical of serious long-range yachts and appeals to owners who value safety, structural integrity and bluewater capability.

Twin Caterpillar diesel engines provide dependable propulsion, yielding an efficient cruising profile and a top speed in the vicinity of 11–11.5 knots. Combined with substantial fuel reserves and the economy of a displacement hull, she is configured for extended itineraries where range, reliability and low consumption outweigh the need for high speed. DESTINY's engineering and tankage are arranged with economical, long-distance operation firmly in mind. Accommodation is arranged for 7–8 guests across four cabins, depending on configuration, with a full-beam master suite, a VIP cabin and additional guest cabins each appointed for privacy and comfort; practical storage and en suite facilities throughout make the interior especially suited to longer periods aboard. The main salon offers a warm, inviting atmosphere that balances

purposeful yacht design with a relaxed, residential sensibility, and large windows allow abundant natural light, creating an elegant central space for dining, entertaining and relaxation.

Exterior living areas are equally well considered: the aft deck functions as an ideal setting for al fresco dining, while the upper deck and sun deck provide multiple options for seating, lounging and open-air enjoyment — spaces tailored to Mediterranean cruising, island exploration and languid days at anchor. DESTINY also includes dedicated crew quarters to support professional operation, an important advantage in the 24-metre segment that enhances guest privacy while ensuring efficient and discreet service.

Viewed from a brokerage perspective, DESTINY distinguishes herself from mainstream production motor yachts as a custom-built, compact explorer with substantial build quality, pragmatic engineering and a strong, individual character. She offers a rare blend of manageable size, steel construction, comfortable accommodation and genuine long-range capability for clients seeking a displacement yacht designed to venture further and stay longer.

For an owner who seeks more than a weekend runabout, DESTINY is compelling: she is intended for authentic sea travel, longer passages, quiet displacement cruising and the reassurance of a robust hull underfoot.

Compared with many faster fibreglass yachts of similar length, she presents a deliberate alternative — favouring substance over speed, and emphasising strength, range, safety, comfort and independence. In short, DESTINY is a distinctive 24-metre explorer with solid Ukrainian construction, European naval pedigree and a pragmatic layout that encapsulates the Fifth Ocean Yachts philosophy of building robust, efficient and comfortable yachts for serious cruising.

SPECIFICATIONS

Basic Information

Model Year:
2014

Country:
United States

Year Built:
2014

Dimensions

LOA:
79' 0" (24.08 m)

Beam:
22' 0" (6.71 m)

Min Draft:
19' 8" (6 m)

Max Draft:
23' 0" (7 m)

Speed, Capacities and Weight

Cruise Speed:
7.50 Knots (8.63 MPH)

Water Capacity:
1400 Gallons

Max Speed:
11.50 Knots (13.23 MPH)

Fuel Capacity:
4491 Gallons

Gross Tonnage:
140 Pounds

Accommodations

Sleeps:

8

Crew Cabin:

2

Total Heads:

4

Hull and Deck Information

Hull Material:

Steel Yachts

Hull Designer:

N/A

Deck Material:

Steel

Interior Designer:

N/A

Hull Configuration:

Bulb Keel

Engine Information

Engines:

2

Engine Type:

Inboard

Manufacturer:

Caterpillar

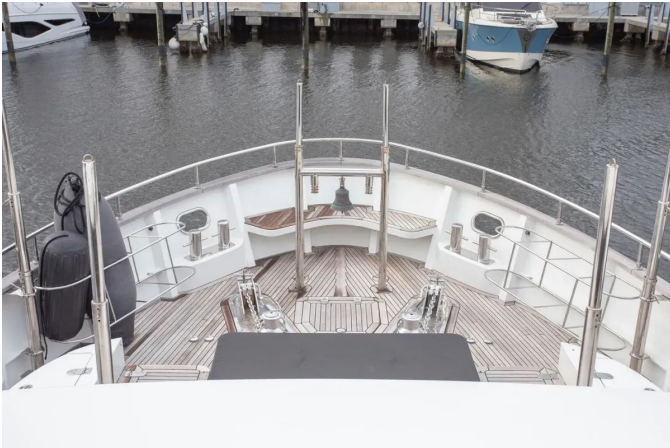
Fuel Type:

Diesel

GALLERY

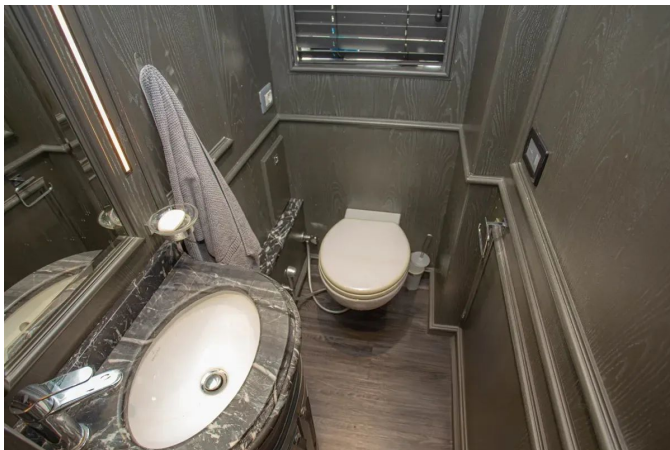




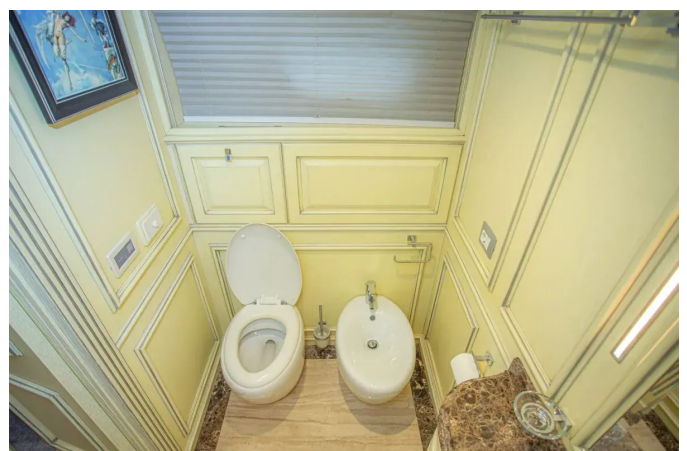


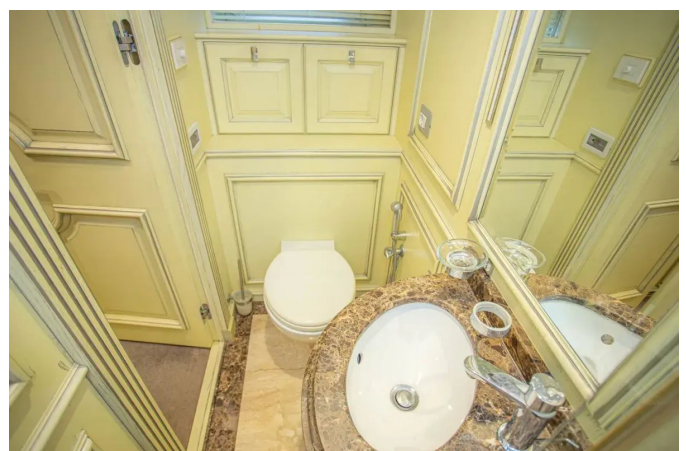
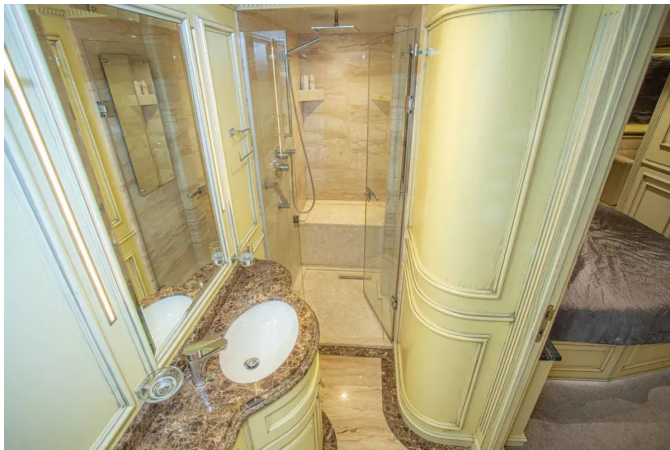




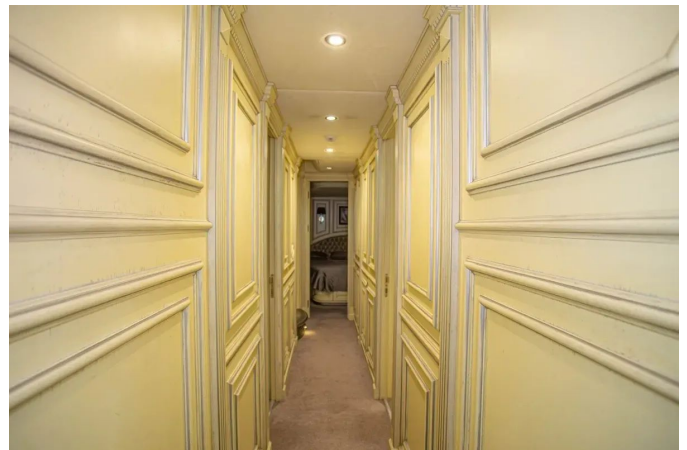
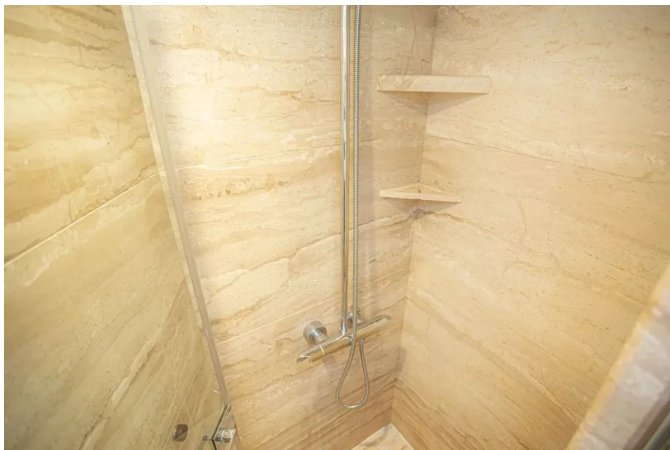


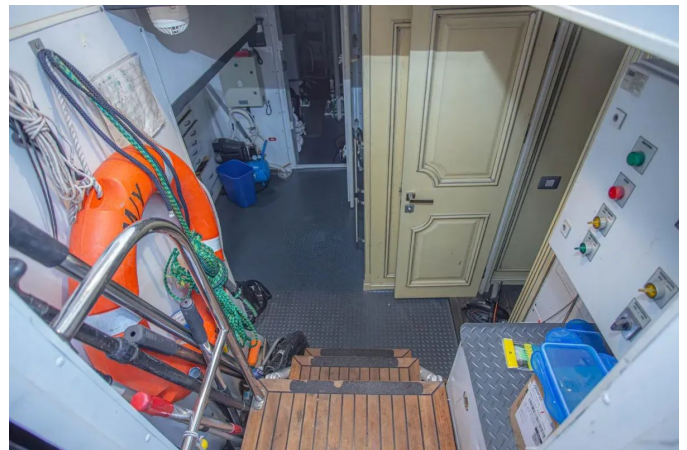


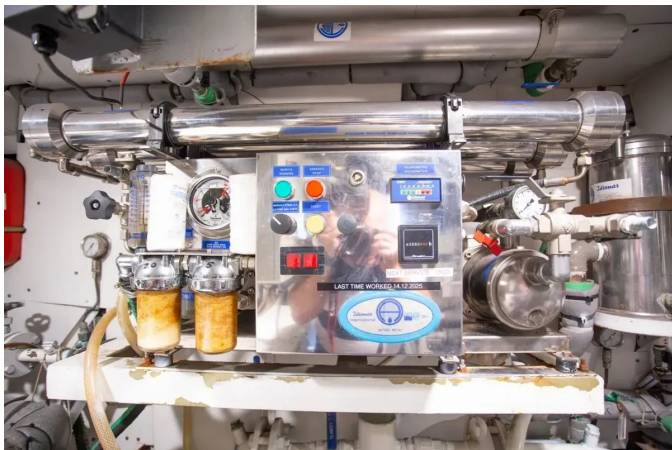
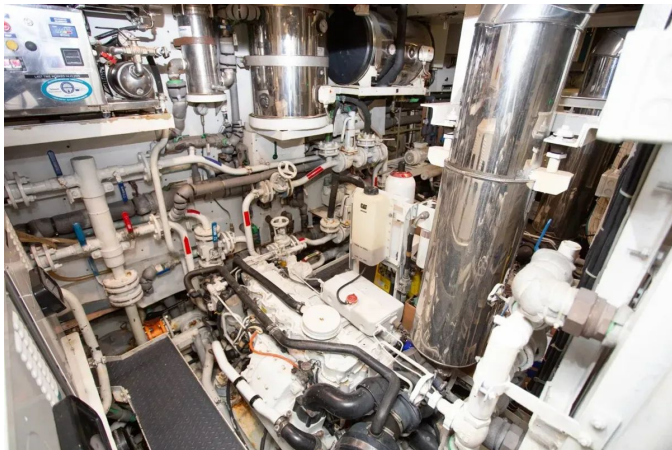


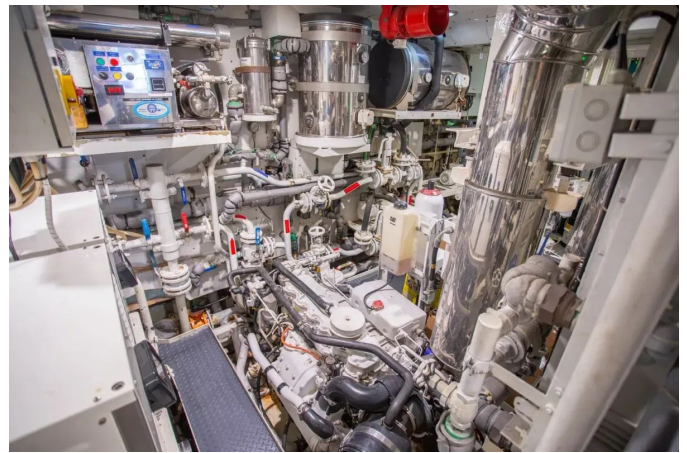
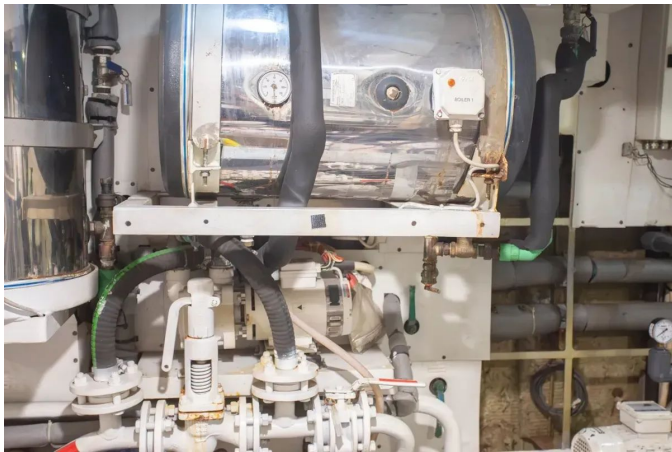




















DETAILED DESCRIPTION

Accommodation areas & entertainment system

DESTINY's lower deck has been arranged to accommodate up to seven guests in a configuration that prioritises privacy, practicality and the comforts required for prolonged cruising. The full-beam owner's stateroom serves as an expansive private retreat, appointed with a generous berth, a comfortable sofa, a vanity, a walk-in wardrobe and an ensuite shower room, with plentiful storage and a calm, refined ambience befitting a long-range yacht. Forward of this, the VIP suite provides principal guests with a discreet, well-proportioned cabin that includes a full-length wardrobe and its own ensuite shower room, delivering a harmonious blend of seclusion and usability.

Guest quarters are completed by a twin cabin to port and a single cabin to starboard, each offering a full-length wardrobe and a private ensuite shower, ensuring every visitor enjoys independent and comfortable accommodation throughout the voyage. The crew are housed in two double cabins capable of sleeping up to four crew members, providing professional, properly appointed crew accommodation that supports attentive service, efficient operation and the separate privacy of owners and guests.

An integrated audio visual and entertainment system extends throughout the accommodation areas. Every cabin is fitted with a Samsung Smart TV and can access the yacht's movie and music library via the AMX multiroom media server, enabling content to be enjoyed from any cabin. The main salon and owner's cabin feature Samsung TVs complemented by Bose speakers for an elevated listening and viewing experience in the principal living spaces, while built-in Bose speakers continue into the crew cabins, galley, all guest bathrooms and the master bathroom to provide consistent audio coverage across the interior. Exterior entertaining areas — including the aft main deck

and the flybridge deck — are also equipped with built-in Bose speakers so music and programming flow effortlessly between inside and out.

DESTINY's entertainment specification includes Smart LED and SAT TV reception, a multiroom AMX media server with whole yacht access to the movie and music library, and a smart control ecosystem compatible with iPad, iPhone and iPod. A pop-up Samsung TV in the salon preserves a clean, uncluttered design when not in use. For onboard communications the vessel is fitted with a Panasonic PBX system located in the wheelhouse and Bang & Olufsen telephones in every cabin, enhancing convenience and connectivity throughout. Taken together, the accommodation and systems onboard DESTINY create a private, highly equipped environment with ensuite guest cabins, dedicated crew quarters, seamless multiroom media access and high quality Bose audio — a specification that underlines her capability as a serious cruising yacht for extended stays aboard.

Wheelhouse / pilothouse and navigation equipment

The wheelhouse aboard DESTINY has been designed to marry purpose with poise, positioned forward and encased in sweeping wraparound glazing to deliver unrivalled sightlines in every direction. From open-ocean passages to delicate marina entries and tight-quarters maneuvering, the layout gives the captain exceptional visibility and situational awareness, creating an environment where confident handling comes naturally.

At the heart of the space sits a bespoke helm console, engineered for clarity and ergonomics so that every vital control is immediately accessible. Rich timber veneers and custom cabinetry provide a refined backdrop to the instrument array, while the electronics are integrated discreetly to maintain a sophisticated, uncluttered feel. A supportive helm chair and adjacent seating welcome both the skipper and companions, transforming the pilothouse into

an inviting observation salon as well as the yacht's operational center.

DESTINY's navigation, communication, and safety fit-out is specified for true long-range work. The electronics suite incorporates three 15.4" Raymarine e165 multifunction displays — two standard units plus an additional e165 loaded with EU cartography — supported by a Raymarine RS130 GPS receiver, a Raymarine DSM300 digital sounder module featuring HD digital technology, a Raymarine i70 instrument display, a Rotavecta wind transducer, a Raymarine SS270W wide-beam depth transducer, and a CS4500 LP ultrasonic speed sensor.

For radar coverage, collision awareness and vessel monitoring the yacht carries a 4kW 48" HD digital open-array radar together with a Raymarine AIS650 and a Raymarine Lifetag system. Autopilot capabilities are comprehensive, with a Raymarine SmartController wireless unit, a Raymarine p70R autopilot controller and an SPXSOL SmartPilot core pack providing dependable guidance on extended passages. Communications are handled by a Raymarine Ray218E VHF and a Raymarine Ray101E handheld VHF, supplemented by a FleetBroadband SAILOR 150 and a SAILOR 60 satellite TV system for connectivity and entertainment offshore.

Offshore safety equipment includes a Satellite 406MHz EPIRB SAILOR SE406-II, a SAILOR SART, a Thrane & Thrane Navtex Receiver and a Furuno NX-300, while environmental and signaling aids such as an Ultrasonic WX-200 weather station and a MARCO marine whistle add further operational assurance. Altogether, the wheelhouse on DESTINY is a comprehensively equipped, highly functional command center crafted to inspire confident navigation, efficient vessel management and comfortable long-distance cruising — a fitting expression of the yacht's explorer ethos and her role as a reliable, practical offshore cruiser.

Exterior deck areas

DESTINY's exterior deck spaces are an extension of the pragmatic explorer-yacht ethos that defines the vessel, thoughtfully arranged to balance functionality with refined comfort. Wide teak decks sit beneath high stainless-steel safety rails, with protected walkways and generous outdoor areas thoughtfully positioned to provide a comfortable, secure environment for guests and crew whether cruising, at anchor, or alongside.

Viewed from outside, DESTINY presents a purposeful, timeless silhouette: a dark hull beneath a white superstructure, punctuated by large panoramic windows that underscore her long-range cruising character. A substantial bow, high bulwarks and wide side decks attest to the yacht's robust construction and offshore capability, while an open deck arrangement delivers excellent usability throughout the vessel.

Aft deck

Sheltered beneath the overhang of the upper deck, the aft deck forms a comfortably shaded retreat for dining, lounging and entertaining in refined privacy. An integrated upholstered seating run sweeps around a central teak dining table, creating an inviting and highly practical setting for casual gatherings or elegant meals outdoors. Teak underfoot, polished stainless steel supports and a crisp white superstructure combine to evoke a bright, timeless yacht aesthetic, while broad glass doors open to the main salon to provide an uninterrupted flow between interior and exterior living spaces. This effortless connection makes the aft deck ideal for breakfast at anchor, evening cocktails, or relaxed dining framed by marina or open sea views. A staircase gives direct access to the upper deck and its additional outdoor entertainment areas, and wide side decks extend forward from this level to ensure safe, practical movement around the vessel.

Side decks

DESTINY is appointed with broad, teak-clad side decks that run the full length of the main deck, creating expansive walkways protected by tall stainless-steel railings and substantial bulwarks to ensure secure, comfortable transit between the aft deck, foredeck and all working areas. Generous tinted glazing set into the superstructure floods the interior with daylight while giving the exterior a refined, contemporary silhouette, and the roofed portions of the side decks offer sheltered passage from sun and weather so movement around the yacht remains effortless in changing conditions. True to its explorer character, these side decks serve as practical working surfaces for the crew, simplify line handling and preserve safe guest circulation; aboard DESTINY they are noticeably wide, robust and deliberately configured to underscore the vessel's serious long-range cruising capability.

Upper deck / bridge deck

An expansive alfresco domain, the upper deck is laid in warm teak for both comfort underfoot and secure footing, and is organized around a purpose-built outdoor galley and barbecue station. A stainless-steel grill sits alongside generous worktops, a convenient sink and thoughtfully integrated storage, forming a fully equipped hub for cooking and serving in the open air. Ideal for leisurely daytime lunches, evening barbecue gatherings or relaxed moments at anchor, the open-plan arrangement affords sweeping sightlines around the yacht and converts the deck into a flexible area that unites guest comfort with operational practicality. Beyond entertaining, the space is purpose-designed for storing and handling tenders and toys, with dedicated equipment stowage and clear working zones that simplify crew activity, while polished stainless-steel railings and substantial deck hardware reinforce its rugged, ocean-going functionality.

Foredeck / bow area

The foredeck of DESTINY presents an expansive, purpose-built working space, sheathed in fine teak and fitted with robust stainless-steel deck hardware. Powerful windlasses and dedicated anchoring gear stand ready, while fairleads and cleats are positioned for immediate access; raised safety rails encircle the area to ensure anchoring tasks are performed both safely and efficiently. True to the spirit of an explorer yacht, the bow is solidly constructed and unpretentious in design, engineered for the demands of real-world seafaring. Ample open deck allows the crew to manoeuvre and operate with confidence when anchoring, mooring or handling lines, and the combination of high bulwarks and stainless rails enhances on-deck security as the warm teak sole lends a classic yachting aesthetic. Thoughtful forward seating and seamlessly integrated deck details introduce a refined layer to this otherwise utilitarian zone, resulting in a foredeck that is as visually appealing as it is highly functional—a layout that underscores DESTINY's long-range cruising purpose, where safe deck operations and durable equipment are indispensable.

Swim platform / stern area

The stern of DESTINY features a purposeful swim platform with an integrated boarding area that provides effortless access whether arriving from the dock or the sea. Reflecting the vessel's explorer silhouette, the aft section is robust and reassuring, with polished stainless-steel rails and carefully considered boarding solutions that promote secure movement at the waterline. The transom doubles as a practical working and staging zone, ideal for watersports preparation, embarking a tender, or making smooth, dignified passages onto the marina. When at anchor, the swim platform becomes a focal point of onboard life, encouraging swimming, water recreation and simple transfers to tenders, while underscoring DESTINY's utility as a long-range cruising yacht

where meticulous detailing enhances comfort, safety and everyday functionality.

Overall exterior impression

DESTINY's exterior decks are expansive and intelligently arranged for extended voyaging, marrying the comforts expected by guests with the practicalities required for long-range passage-making. A careful harmony exists between welcoming entertainment areas and operationally efficient features: wide, secure walkways thread the yacht, robust deck hardware is in place for demanding tasks, and broad teak surfaces run throughout, lending both warmth and durability. The aft deck is conceived as a sheltered al fresco dining salon, while the upper deck accommodates a fully equipped barbecue and sociable entertainment zone. Generous side decks permit safe, confident circulation around the vessel, and the foredeck is specifically laid out to manage heavy-duty anchoring and exacting line-handling procedures. Collectively, these exterior arrangements reinforce DESTINY's explorer-yacht persona—robust, comfortable, eminently practical, and prepared for prolonged cruising.

Disclaimer

Shestakov Yacht Sales offers these particulars in good faith; nevertheless they are supplied without any guarantee of accuracy and no warranty is made concerning the condition of the vessel. The yacht is offered subject to prior sale, alteration of price, or withdrawal from the market without notice. This information is provided as a courtesy to clients by Shestakov Yacht Sales and is not intended to constitute a direct or formal representation of any specific yacht for sale.

CONTACTS

Shestakov Yacht Sales is a brokerage company specializing in the sale and service of yachts worldwide. The company offers services for buying and selling both new and used motor yachts, sailing vessels, and luxury superyachts. They also provide yacht registration, insurance, technical maintenance, crew selection, and charter organization services across the U.S., Canada, Latin America, the Caribbean, and the Bahamas.

The founder and lead broker of the company is Andrey Shestakov, a licensed and certified expert with extensive experience in marine engineering and shipbuilding.

The company has an extensive network of partnerships with major yacht manufacturers worldwide and provides services in multiple languages, including Russian, Ukrainian, Spanish, and English. The office is in Dania Beach, Florida, USA.

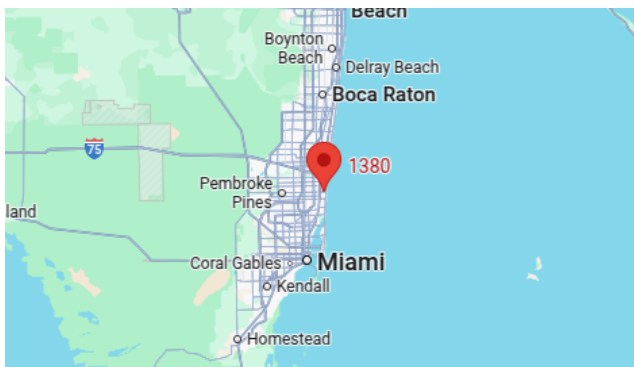
For more information and to view available yachts, you can visit the company's official website: <https://shestakovyachtsales.com>

Contact details

Phone: +1(954)274-4435

Email: andrey@shestakovyachtsales.com

Address



1380 Weeping Willow Way, Hollywood,
Florida 33019