

## BANDOL - MARLOW YACHTS



**Builder:** [MARLOW YACHTS](#)

**LOA:** 80' 0" (24.38 m)

**Year Built:** 2006

**Beam:** 20' 0" (6.20 m)

**Model:** 78E

**Max Draft:** 15' 4" (4.67 m)

**Price:** \$1,850,000 USD Subject to change.

**Cruising Speed:** 10 Knots (11.51 MPH)

[See full listing on our website](#)

**Location:** Fort Lauderdale, United States

**Max Speed:** 18 Knots (20.71 MPH)

---

# TABLE OF CONTENTS

---

**OVERVIEW ..... 3**

**SPECIFICATIONS ..... 4**

    Basic Information ..... 4

    Dimensions ..... 4

    Speed, Capacities and Weight ..... 4

    Accommodations ..... 5

    Hull and Deck Information ..... 5

    Engine Information ..... 5

**GALLERY ..... 6**

**DETAILED DESCRIPTION ..... 17**

**CONTACTS ..... 32**

## OVERVIEW

---

Introducing BANDOL, the stunning 78E expedition yacht designed by Marlow. This splendid vessel is crafted for luxury and leisure, accommodating up to 10 guests in 4 beautifully designed suites, including a sumptuous VIP stateroom. The expansive master suite features separate bathrooms for him and her, providing a tranquil escape. With room for 2 crew members, BANDOL ensures a relaxed journey on the water. Recently updated in 2020, this breathtaking yacht blends American style with exceptional spaciousness, making it a perfect option for those interested in purchasing a yacht. Delve into yacht sales at the current boat location and experience the elegance that BANDOL presents.

# SPECIFICATIONS

---

## Basic Information

---

**Category:**  
Motor yachts

**Year Built:**  
2006

**Model Year:**  
2006

**Country:**  
United States

## Dimensions

---

**LOA:**  
80' 0" (24.38 m)

**Max Draft:**  
15' 4" (4.67 m)

**Beam:**  
20' 0" (6.20 m)

## Speed, Capacities and Weight

---

**Cruise Speed:**  
10 Knots (11.51 MPH)

**Water Capacity:**  
480 Gallons

**Max Speed:**  
18 Knots (20.71 MPH)

**Fuel Capacity:**  
3000 Gallons

**Gross Tonnage:**  
120 Pounds

## Accommodations

---

**Crew Cabin:**

1

## Hull and Deck Information

---

**Hull Material:**

Fiberglass and Plastic Yachts

**Hull Designer:**

N/A

**Deck Material:**

Fiberglass

**Interior Designer:**

N/A

**Hull Configuration:**

Semi-Displacement

## Engine Information

---

**Engines:**

2

**Engine Type:**

Inboard

**Manufacturer:**

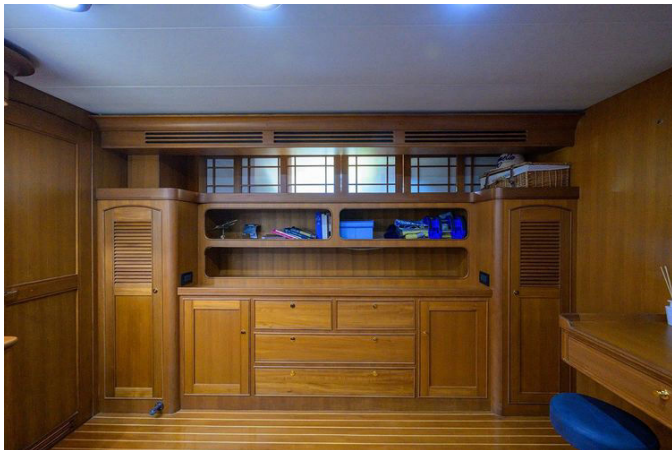
Caterpillar

**Fuel Type:**

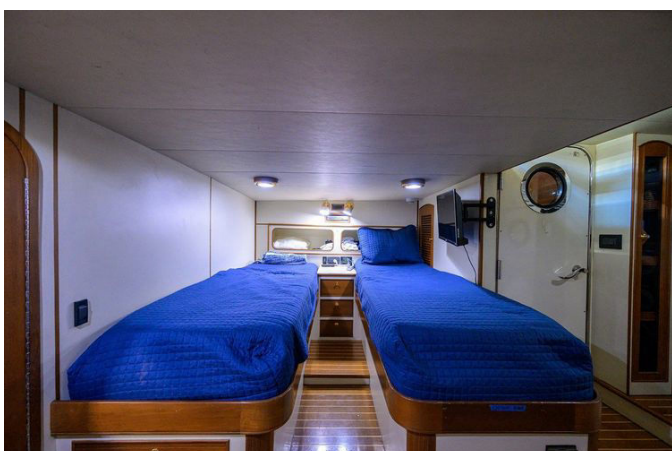
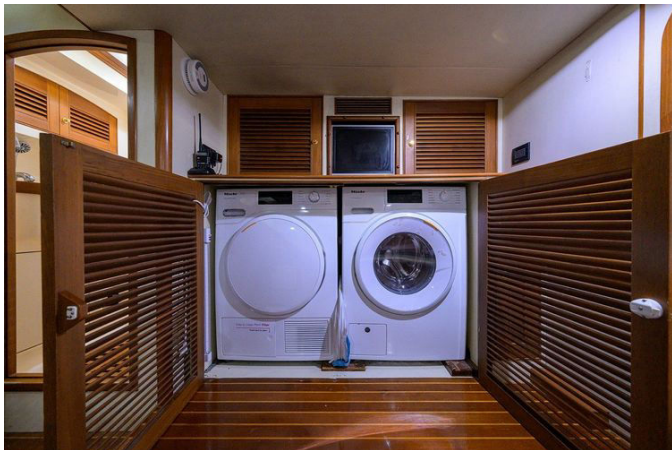
Diesel

# GALLERY

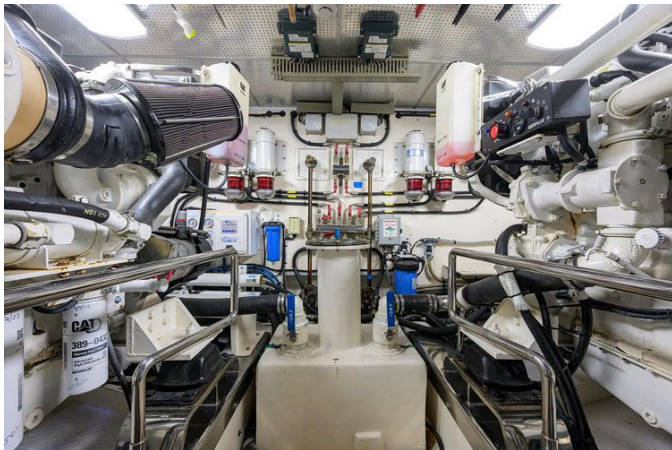




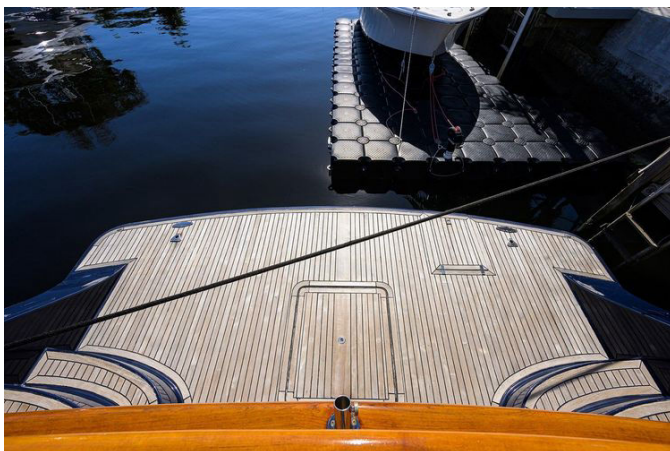


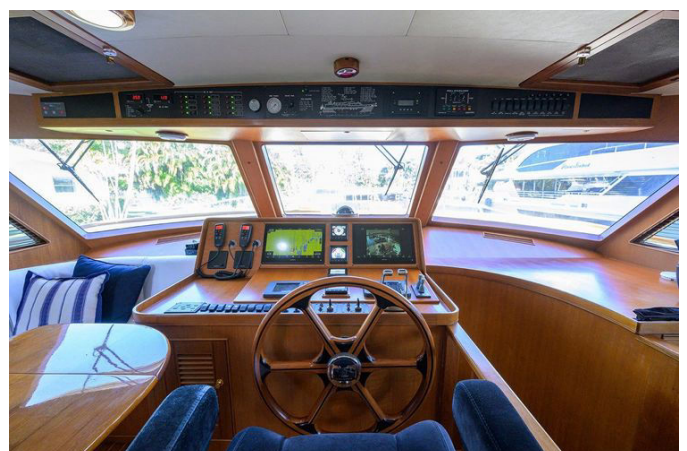
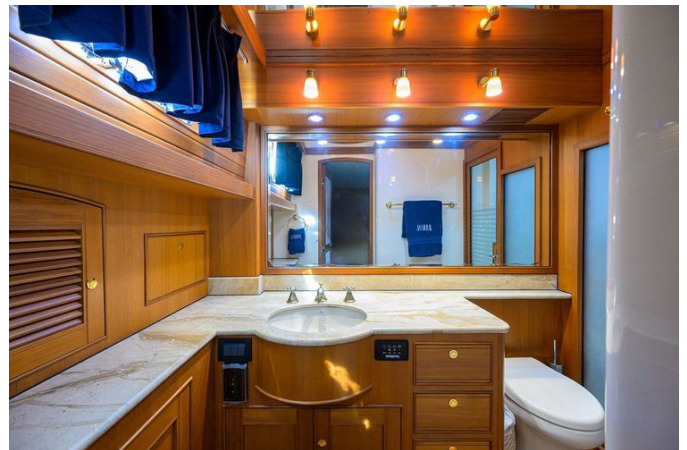
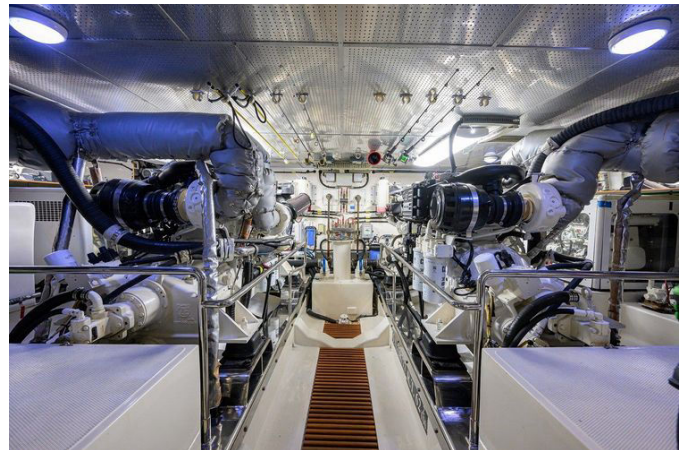


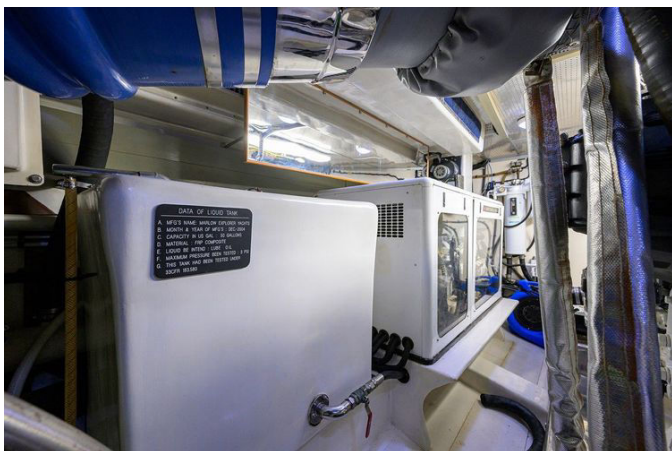


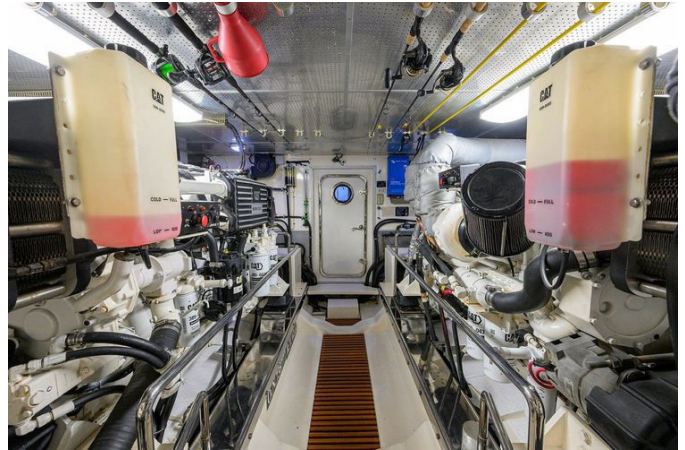












---

# DETAILED DESCRIPTION

---

## Section name

---

Introducing the magnificent BANDOL, a luxurious 78E expedition yacht crafted by Marlow. This exceptional vessel was expertly designed and completed in 2006, featuring a chic interior that was updated in 2019/20 to preserve its contemporary and sophisticated charm. BANDOL comfortably accommodates up to 10 guests across four suites, including an opulent VIP stateroom and a generous master suite with separate his and her bathrooms. The yacht also provides quarters for two crew members in a dedicated aft cabin, ensuring a smooth and pleasurable journey for everyone on board.

BANDOL is outfitted with the latest Garmin electronics in both the wheelhouse and flybridge, enhancing navigation and control. New CCTV cameras have been installed to boost security, while the new CLR2C Isinglass enclosure on the flybridge offers protection from the elements. The yacht's comfort is further elevated by new AC chillers, worth over \$40,000, and new interior and exterior cushions that add a luxurious touch.

The main engine and generator have been meticulously serviced, ensuring dependable performance, and the stabilizers have been maintained for seamless sailing. The motors for both the bow and stern thrusters, as well as the windlass motor, have been replaced, ensuring effortless handling. The sacrificial skeg has been inspected, repaired as necessary, and repainted, with all zincs replaced to uphold the yacht's integrity.

Additional technical upgrades include the replacement of cutlass bearings, shaft seals, and couplers, with comprehensive inspections of the shafts for any signs of wear or damage. Both rudders have been serviced, with bushings, seals, and bearings checked and replaced as needed. The intake grates have been cleaned, repainted with PropSpeed, and the grating door pins replaced.

Furthermore, any exhaust cracks in the engine room have been repaired, and the fiberglass exhaust system has been thoroughly inspected in all other areas. BANDOL exemplifies luxury and meticulous care, providing an unmatched yachting experience with its perfect blend of elegance, comfort, and state-of-the-art technology.

## Salon

---

The salon of BANDOL radiates sophistication with its teak and holly flooring, beautifully paired with satin-finished teak cabinetry. This refined area includes built-in seating that comfortably fits eight adults, with extra space available in the nearby dining section, making it ideal for hosting larger gatherings. A new 52-inch flat screen TV is thoughtfully placed directly opposite the U-shaped seating arrangement, providing flexible viewing options. Whether cruising, where the TV can be watched in its lowered state, or anchored or docked, where it can be elevated, guests can easily enjoy their favorite programs or films.

The salon's expansive coffee table is perfect for informal dining and can be adjusted in height, enhancing the room's versatility. The area is illuminated by a mix of overhead 24V lights, rope lighting, table lamps, and 24V LED wall sconces, creating a cozy and welcoming ambiance. To elevate the audio experience, a Bose surround sound system is installed in the main salon, ideal for listening to music or enriching the TV viewing experience.

## Dining room / bar

---

The dining area on BANDOL is crafted to accommodate both cozy get-togethers and larger dinner events, featuring a U-shaped seating arrangement enhanced by chairs at the in-board port side of the table. This sophisticated table comfortably hosts six to eight guests, and for more

elaborate occasions, an additional leaf can be added to seat more people. The built-in seating is not only plush but also functional, as it lifts to reveal generous storage space, ideal for storing supplies for extended journeys. The forward buffet cabinets are cleverly designed to securely hold dishes and glassware, ensuring they remain accessible and safe while at sea.

Directly opposite the dining table is a fully equipped wet bar, featuring a sink, wine cooler, and clear ice machine, along with plenty of storage. This arrangement ensures that all your hosting needs are met, whether you're organizing a casual get-together or a formal dinner. The dining and bar area on BANDOL effortlessly combines practicality with elegance, making it the perfect setting for socializing and indulging in exquisite dining experiences on the water.

## Galley / pilothouse

---

The galley on BANDOL is strategically positioned just a few steps above the salon and dining area, allowing for a smooth flow between these spaces. Situated ahead of the galley is the pilothouse, and together, these areas offer breathtaking forward views, making both cooking and navigation a pleasure. The U-shaped galley is crafted for both efficiency and comfort, featuring all the amenities one would find in a well-equipped home kitchen. There is plenty of storage space with numerous cabinets and drawers, ideal for long voyages. The newly installed pure white quartz stone countertop not only illuminates the area but also adds a touch of modern elegance.

The galley is equipped with premium appliances, including a Dacor four-burner cooktop with stainless-steel sea rails, providing safety and stability while cooking on the water. Complementing the cooktop is a full-size Dacor oven, and a full-sized, efficient vented hood with built-in lighting ensures excellent ventilation. A Panasonic convection microwave oven, newly added in 2024, is conveniently placed at eye level for easy access. The galley also includes a

full-size Franke stainless-steel sink with a garbage disposal, paired with a Grohe faucet set into the forward countertop. For added convenience, there is a filtered instant hot water spigot.

Refrigeration is handled by two under-counter SubZero fridge/freezer units, each with two freezer drawers and two refrigerator drawers, providing ample space for all provisions. The galley and pilothouse on BANDOL are meticulously designed to elevate the onboard living experience, seamlessly blending functionality with style and modern amenities.

## Master stateroom

---

The master stateroom on BANDOL is a haven of luxury and comfort, located just a few steps down a gracefully curved staircase from the wheelhouse and galley. This welcoming area is ideal for long voyages, providing a cozy, home-like environment. Positioned aft along a short corridor, the stateroom boasts a king-size bed with new mattresses and linens from 2021, centrally placed for optimal use of space. Directly behind the bed are the his-and-hers bathrooms, each featuring a sink, storage cabinets and drawers, a VacuFlush toilet, and mirrors. These bathrooms share a private enclosed shower, accessible from both sides for added convenience and privacy.

The stateroom is elegantly finished in satin teak, radiating warmth and sophistication. It is lit by six stainless-steel opening port lights, with two additional ones in the bathroom, all tastefully hidden by sliding shoji screens. A cozy desk is set against the forward wall, complete with a built-in swing-out stool and dedicated lighting, creating an ideal workspace. A large flat screen Sony TV is mounted on the forward bulkhead for entertainment, while an upholstered settee to starboard provides extra seating and storage. Lighted cedar-lined hanging lockers are strategically placed to port and starboard, offering ample storage for clothing and personal belongings. The stateroom is adorned with varnished teak and holly floors, enhancing its timeless charm.

The bathrooms are equipped with VacuFlush toilets, opening port lights, and Grohe faucets and shower fixtures, ensuring a luxurious experience. The vanities are made from high-quality marble, adding to the overall elegance of the space. The master stateroom on BANDOL perfectly combines functionality and style, offering a peaceful retreat for those on board.

## Vip stateroom

---

The VIP stateroom on BANDOL is an opulent sanctuary situated a few steps forward toward the bow and midships, offering nearly 7 feet of headroom for an airy ambiance. Central to this refined cabin is a king-size bed positioned along the centerline, allowing easy access from both sides. Above the main bed, there are generously sized bunk beds on either side, perfect for young children or extra storage. The stateroom is fitted with a wall-mounted flat screen TV, complete with its own DirecTV receiver, and a stereo system for entertainment.

This stateroom includes a full-size bathroom with a separate shower, adorned with premium Grohe sink and shower fixtures, a VacuFlush toilet, and sophisticated marble countertops. The room is lit by overhead 24V lights, subtle rope lighting, and twin reading lamps, creating a cozy and welcoming atmosphere. A Sharp flat screen TV enhances the entertainment options, while the new custom king-size mattress from 2021 ensures a peaceful night's rest.

For storage, the stateroom provides a large illuminated cedar-lined hanging locker and six roomy drawers beneath the bed, offering ample space for clothing and personal belongings. The VIP stateroom on BANDOL seamlessly blends luxury with practicality, making it an ideal retreat for guests seeking comfort and elegance during their journey.

## Port guest stateroom

---

The port guest stateroom on BANDOL provides a warm and welcoming environment for visitors, featuring two exceptionally comfortable single beds. Nestled between the beds, a built-in nightstand with drawers offers practical storage for personal belongings. The stateroom is elegantly adorned with satin teak, infusing the space with warmth and sophistication. The mattresses, updated in 2021, guarantee a peaceful night's rest for guests.

The stateroom is equipped with a full-size bathroom featuring a separate shower, embellished with marble countertops and premium Grohe fixtures in both the sink and shower, ensuring a luxurious bathing experience. For entertainment, a flat screen TV is mounted on the bulkhead, connected to DirecTV and a stereo system, allowing guests to enjoy their favorite programs and music in comfort. The port guest stateroom on BANDOL seamlessly blends comfort with elegance, making it a perfect haven for guests during their journey.

## Starboard bunk room

---

The starboard bunk room on BANDOL is ideally situated at the foot of the curved staircase that descends from the wheelhouse and galley area. This inviting stateroom is crafted to comfortably host adults, featuring bunks with new mattresses added in 2021. The room is equipped with a TV for guest entertainment and provides generous storage options with spacious drawers and a hanging locker for personal items.

Guests in this stateroom enjoy easy access to the VIP bathroom from the hallway, ensuring both convenience and privacy. The room is illuminated by two opening port lights, which allow natural light to flood the space, creating a refreshing and airy atmosphere. The starboard bunk room on BANDOL is thoughtfully designed to combine comfort with practicality, making it a

welcoming haven for guests during their journey.

## Crew cabin

---

The crew cabin on BANDOL is meticulously crafted to ensure both comfort and practicality for two crew members. It features two adjacent bunks, providing a restful sleep environment. The cabin is equipped with its own bathroom and shower, ensuring privacy and convenience. For added ease, the cabin includes a microwave and refrigerator, enabling the crew to prepare and store meals effortlessly.

A new flat screen TV is installed on a flexible mount, offering entertainment options during the crew's leisure time. Access to the crew cabin is flexible, with entry possible from the aft port corner of the main salon via a short staircase or through the large watertight transom door. Additionally, a full-size washer and dryer are installed in the crew cabin, making laundry tasks straightforward.

The crew cabin on BANDOL is designed to be a functional and comfortable living area, allowing the crew to carry out their responsibilities efficiently while enjoying a pleasant onboard atmosphere.

## Engine room

---

The engine room on BANDOL exemplifies efficient design and cutting-edge engineering, featuring C-18 engines that drive the yacht to cruising speeds usually associated with larger, heavier, and more expensive V-12 engines. This compact yet robust configuration not only boosts performance but also allows for a surprisingly spacious engine room. Within this meticulously organized area, you'll find twin 25kW Northern Lights generators, renowned for their easy maintenance, ensuring a dependable power supply throughout your journeys.

The engine room is well-illuminated and ventilated, equipped with four fans to maintain optimal airflow. Safety is paramount, with a fire suppression system and bilge pumps at both the fore and aft, complete with high water alarms, providing reassurance while at sea. The space is also air-conditioned, and the bilges are fully finished, facilitating easy maintenance of a clean and visually appealing environment.

To reduce noise and vibration, the C-18 engines are mounted on soft mounts, and the Aquadrive shaft couplings further diminish vibration, maintaining shaft alignment and ensuring smooth and quiet operation. The engine room on BANDOL is crafted to deliver both functionality and comfort, making it an ideal setting for managing the yacht's mechanical requirements.

## Electronics

---

BANDOL is outfitted with an extensive array of redundant electronics, guaranteeing that a backup system is always ready in case of any failure. This reliable configuration has allowed the current owners to enjoy countless miles of hassle-free cruising, providing assurance that the systems will ensure their safety. Fuel levels can be easily checked using a simple sight glass in the engine room, facilitating straightforward monitoring.

Above the wheel, the control panel contains the inverter monitoring system controls, electronic breakers, and digital battery monitors, granting easy access to vital information and controls. The helm and flybridge are equipped with bow and stern thruster controls, which enhance maneuverability and precision during navigation. Furthermore, the vessel's total height with the radar mast folded is just 20 feet, offering increased flexibility when passing under bridges and other overhead obstacles.

BANDOL's electronics are crafted to deliver reliability and user-friendliness, ensuring a smooth and secure experience for everyone on board.

## Lower helm

---

The lower helm on BANDOL is outfitted with cutting-edge technology to guarantee a seamless and efficient navigation experience. At the heart of this setup are the dual Garmin multi-function displays, delivering extensive data and control right at your fingertips. Enhancing these displays is the Garmin autopilot, newly installed in 2021, which provides accurate and dependable course management, facilitating effortless cruising.

Additionally, the lower helm features new wind, depth, and speed displays, also updated in 2021, ensuring that all essential navigational information is easily accessible. The helm is further equipped with bow and stern thruster controls, offering outstanding maneuverability and control in various docking and navigation situations.

The lower helm on BANDOL is crafted to seamlessly integrate advanced technology with intuitive controls, making it the perfect command center for any journey.

## Upper helm

---

The upper helm on BANDOL is crafted to deliver an outstanding navigation experience, equipped with state-of-the-art technology to ensure accuracy and user-friendliness. Central to this helm are the dual Garmin multi-function displays, providing the captain with a comprehensive array of information and control options. These displays are enhanced by the Garmin autopilot, newly installed in 2021, which offers precise and reliable course management, making extended journeys more manageable and enjoyable.

Alongside these sophisticated features, the upper helm is fitted with new wind, depth, and speed displays, also updated in 2021, ensuring that all critical navigational data is readily available. The helm is further equipped with bow and stern thruster controls, offering exceptional maneuverability and control

in various docking and navigation scenarios.

The upper helm on BANDOL seamlessly combines advanced technology with intuitive controls, making it the perfect command center for captains who prioritize both performance and convenience on the water.

## Deck

---

The deck areas on BANDOL exemplify both elegance and safety, with upper and lower decks beautifully clad in teak that remains in pristine condition. This yacht prioritizes safety, featuring handrails wherever needed, high bulwarks, and expansive side decks. The stunning teak cap rails and secure access to the bow via the Portuguese bridge further enhance the vessel's safety attributes. A watertight transom door leads to a lazarette technical and storage area, continuing forward to the crew cabin and further to the engine room.

BANDOL's deck is fitted with recessed stainless steel cleats and custom oval stainless steel cleats, ensuring secure mooring. The yacht also includes port and starboard stairs from the bathing platform to the aft cockpit, facilitating easy access. The bridge is shielded by a newer Isinglass enclosure, installed in 2021, and a hydraulic davit with a 1600lb capacity, rebuilt in 2021, enhances the deck's functionality. New solenoids were added in 2024, ensuring the deck equipment remains reliable.

The full teak deck is complemented by a folding radar mast with a height of 20 feet, allowing for smooth navigation under bridges. Safety is further assured with a life raft that accommodates eight people. For those who enjoy outdoor cooking, an electric grill is conveniently situated on the bridge. The deck on BANDOL seamlessly blends elegance with functionality, making it an ideal area for both relaxation and operation.

## Mechanical equipment

---

BANDOL is driven by twin Caterpillar C-18 diesel engines, each producing 1000 horsepower, guaranteeing strong performance and dependability. As of November 2024, the port engine has accumulated 4374 hours, while the starboard engine has 4372 hours, with both engines having undergone servicing in August 2024. Complementing these engines are two Northern Lights 25 kW generators, with the port generator showing 8,984 hours and the starboard 8,981 hours as of November 2024, supplying ample power for all onboard systems.

The yacht features two 50A Cablemasters positioned at the stern and bow, along with a 100amp to 2 x 50amp ANG converter pigtail, ensuring flexible and efficient power management. Maneuverability is enhanced by Side-Power 20 hp bow and stern thrusters, while recently serviced Naiad stabilizers ensure a smooth and stable ride.

BANDOL's electrical system is supported by AGM batteries, with separate units for the engines, house, thrusters, and generators. The chilled water air conditioning system maintains a comfortable onboard climate, while the central sea chest and common drain system efficiently handle water discharge. The Sea Recovery water maker, capable of producing 1600 gallons per day, ensures a continuous supply of fresh water.

Additional features include spurs on the shafts for added protection and recent detailing, including a bottom job and varnish, ensuring the yacht remains in pristine condition. BANDOL's mechanical equipment is crafted to deliver exceptional performance, reliability, and comfort for everyone on board.

## Construction

---

Marlow Yachts are celebrated for their limited production of semi-custom

yachts, crafted with rigorous quality control to ensure superior standards. The Marlow Explorer 78E, a favored design, is engineered for long-distance, self-sufficient cruising, providing both comfort and safety. A distinctive feature of BANDOL is its unique strut keel, which safeguards the running gear from offshore debris and floating lines, as well as from significant damage due to accidental grounding in shallow waters. The yacht's shafts are fitted with Spurs, designed to slice through lines encountered on buoys or floating freely, preventing them from entangling in the propellers.

BANDOL's construction employs the finest materials, including Dupont Kevlar and CoreCell, for the hull, deck, and superstructure, resulting in a vessel that is both quiet and sturdy. Vinylester and epoxy resins and adhesives are used throughout the building process, ensuring durability and strength. Mechanical components such as Aquadrive constant velocity joints on the shafts eliminate vibrations, contributing to a quieter experience while underway. Tide seals ensure a consistently dry bilge and smooth operation, while Trace inverters allow for silent nights in peaceful anchorages.

The interior of BANDOL exemplifies luxury and quality, featuring hand-finished details and top-tier brands like Sub Zero, Dacor, Asko, Bosch, Franke, and Grohe. The use of exquisite fabrics, including ultra-leather and other premium brands, enhances the elegance and comfort of the interior spaces. BANDOL's construction reflects a dedication to quality and performance, making it an outstanding choice for discerning yacht enthusiasts.

## Recent updates

---

BANDOL has recently received a series of updates, ensuring it stays at the cutting edge of modern yachting technology and luxury. The wheelhouse and flybridge now feature a state-of-the-art Garmin navigation system, complete with GPS, depth, wind, autopilot, and radar, enhancing navigational accuracy and safety. In 2023, a Starlink communications system was added, providing

dependable connectivity while at sea. The yacht also boasts two new VHF antennas installed in 2022, ensuring clear communication.

The davit, capable of lifting 1600 pounds, was rebuilt in 2021, and new solenoids were installed in 2024. The topsides and transom were repainted in 2021, with the transom receiving an additional fresh coat in 2023. A new layer of varnish was applied in September 2024, preserving the yacht's immaculate appearance. New Isinglass curtains for the flybridge were installed in 2022, and a two-seater kayak with custom mounts was added to the flybridge top for leisure activities.

In 2023, new motors for the bow and stern thrusters, as well as a new windlass motor, were installed, improving maneuverability and anchoring capabilities. The yacht also received new fender covers in 2022, and the Naiad stabilizers were serviced in both 2021 and 2023. Two 4-ton Dometic Chiller AC units with titanium condensers were installed by Elite Marine in 2021, ensuring optimal climate control.

All necessary maintenance on the main engines and generators was completed in 2024, and all windows and port lights were re-bedded and professionally re-caulked in 2022. The windshield wipers and motors were replaced in 2023, and a new CCTV system was installed in 2022 to enhance security. The sound system, including speakers, was upgraded in 2022, and sanitary vacuum hoses for the toilet system were replaced throughout the yacht in August 2022.

Additional lighting was added to the master stateroom bathrooms in 2024, and new exterior cushions were introduced in 2021. The yacht features new custom solid teak tables with stainless steel adjustable stands on both the aft deck and flybridge. The interior has been refreshed with new upholstery and soft furnishings, and lighting has been upgraded to LED for energy efficiency. Entertainment options have been improved with a new 52-inch TV in the main salon and a new TV in the crew quarters. A new Panasonic Genius convection

microwave was installed in 2023, along with a new Frigidaire 4-burner countertop stove in 2022. The galley now features a new custom pure white quartz stone countertop, and the crew quarters have been equipped with a new washer and dryer, ensuring convenience and comfort for everyone on board.

## Exclusions

---

The sale of BANDOL excludes the owner's personal belongings, which consist of various items with personal significance and utility. Specifically, these exclusions cover fishing equipment, vital for the owner's leisure pursuits, as well as loose galley items and accessories, like pots and pans, that are crucial to the owner's cooking preferences. Moreover, Yeti coolers, renowned for their durability and efficiency, are not part of the sale, along with the owner's scooter and bicycles, which offer convenient transportation. Lastly, any artwork that personalizes the yacht's interior is also excluded, as these pieces carry sentimental value for the owner.

## Recent maintenance

---

BANDOL has recently received extensive maintenance to guarantee peak performance and durability. The yacht's bottom underwent thorough sanding to effectively eliminate any antifouling buildup, followed by the application of an epoxy seal on the hull to safeguard the surface. To further boost the vessel's performance and protection, two new coats of antifouling were applied.

Beyond the hull maintenance, the shafts and propellers were carefully removed, serviced, and reinstalled. They were then treated with PropSpeed, a specialized coating aimed at enhancing efficiency and minimizing marine growth. The rudders were also removed, with seals and bushings replaced to

ensure smooth and dependable operation.

Additionally, the yacht's annual dockage is open to negotiation and is suitable for hurricane conditions, offering reassurance to potential buyers. This recent maintenance ensures that BANDOL is in prime condition, ready for new adventures on the water.

# CONTACTS

---

Shestakov Yacht Sales is a brokerage company specializing in the sale and service of yachts worldwide. The company offers services for buying and selling both new and used motor yachts, sailing vessels, and luxury superyachts. They also provide yacht registration, insurance, technical maintenance, crew selection, and charter organization services across the U.S., Canada, Latin America, the Caribbean, and the Bahamas.

The founder and lead broker of the company is Andrey Shestakov, a licensed and certified expert with extensive experience in marine engineering and shipbuilding.

The company has an extensive network of partnerships with major yacht manufacturers worldwide and provides services in multiple languages, including Russian, Ukrainian, Spanish, and English. The office is in Dania Beach, Florida, USA.

For more information and to view available yachts, you can visit the company's official website: <https://shestakovyachtsales.com>

## Contact details

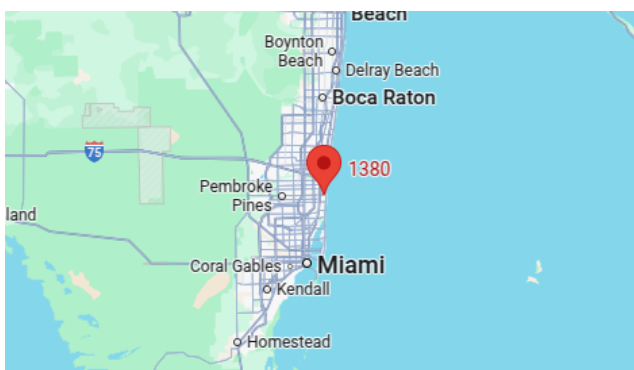
---

**Phone:** +1(954)274-4435

**Email:** [andrey@shestakovyachtsales.com](mailto:andrey@shestakovyachtsales.com)

## Address

---



1380 Weeping Willow Way, Hollywood,  
Florida 33019