

## CIAO - PERSHING



**Builder:** [PERSHING](#)

**LOA:** 80' 0" (24.38 m)

**Year Built:** 2025

**Beam:** 19' 0" (5.79 m)

**Model:** GTX 80

**Max Draft:** 19' 11" (6.08 m)

**Price:** \$5,399,000 USD Subject to change.

**Cruising Speed:** 28 Knots (32.22 MPH)

[See full listing on our website](#)

**Location:** Fort Lauderdale, United States

**Max Speed:** 34 Knots (39.13 MPH)

---

# TABLE OF CONTENTS

---

|                                    |           |
|------------------------------------|-----------|
| <b>OVERVIEW .....</b>              | <b>3</b>  |
| <b>SPECIFICATIONS .....</b>        | <b>4</b>  |
| Basic Information .....            | 4         |
| Dimensions .....                   | 4         |
| Speed, Capacities and Weight ..... | 4         |
| Accommodations .....               | 4         |
| Hull and Deck Information .....    | 5         |
| Engine Information .....           | 5         |
| <b>GALLERY .....</b>               | <b>6</b>  |
| <b>DETAILED DESCRIPTION .....</b>  | <b>27</b> |
| <b>CONTACTS .....</b>              | <b>39</b> |

# OVERVIEW

---

The 2025 Pershing GTX80 is a luxury motor yacht that pairs exhilarating performance with generous interior volumes and expansive open decks. Conceived by the Ferretti Group's Product Strategy Committee under the leadership of Piero Ferrari and brought to life with Vallicelli Design, this sport yacht fuses athletic character, contemporary styling and timeless elegance.

# SPECIFICATIONS

---

## Basic Information

---

**Model Year:**  
2025

**Country:**  
United States

**Year Built:**  
2025

## Dimensions

---

**LOA:**  
80' 0" (24.38 m)

**Max Draft:**  
19' 11" (6.08 m)

**Beam:**  
19' 0" (5.79 m)

## Speed, Capacities and Weight

---

**Cruise Speed:**  
28 Knots (32.22 MPH)

**Water Capacity:**  
343 Gallons

**Max Speed:**  
34 Knots (39.13 MPH)

**Fuel Capacity:**  
1374 Gallons

## Accommodations

---

**Total Heads:**  
4

**Crew Berths:**  
1

## Hull and Deck Information

---

**Hull Material:**

Fiberglass and Plastic Yachts

**Hull Designer:**

N/A

**Deck Material:**

Fiberglass

**Interior Designer:**

N/A

**Hull Configuration:**

Deep Vee

## Engine Information

---

**Engines:**

3

**Engine Type:**

Inboard

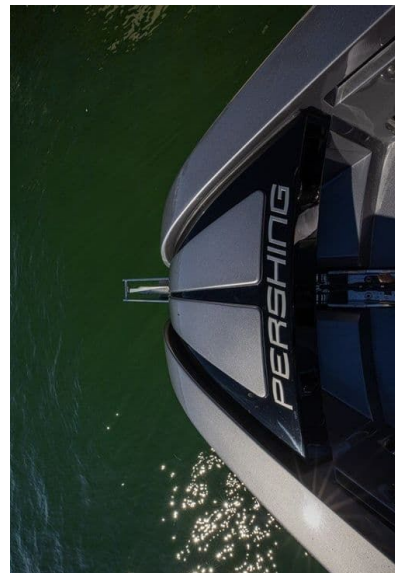
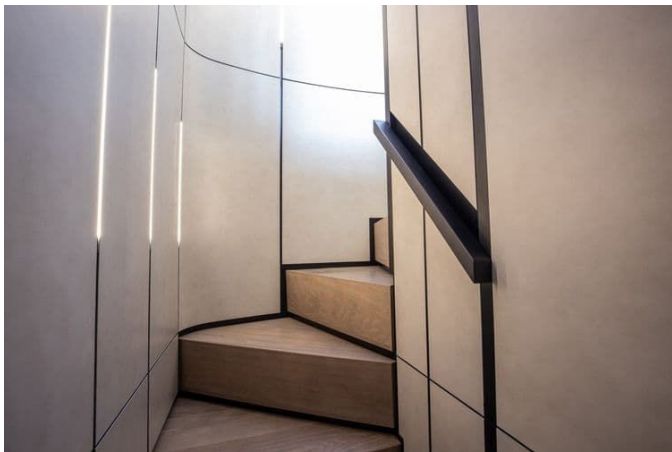
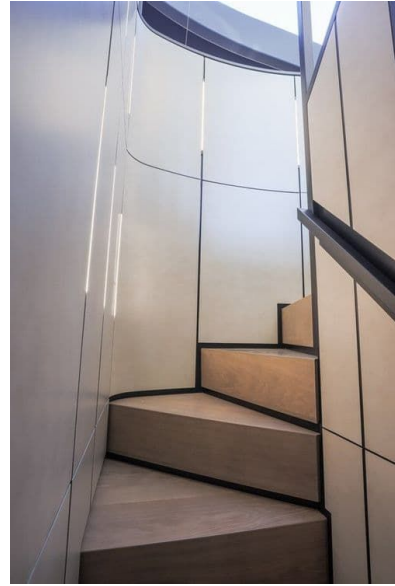
**Manufacturer:**

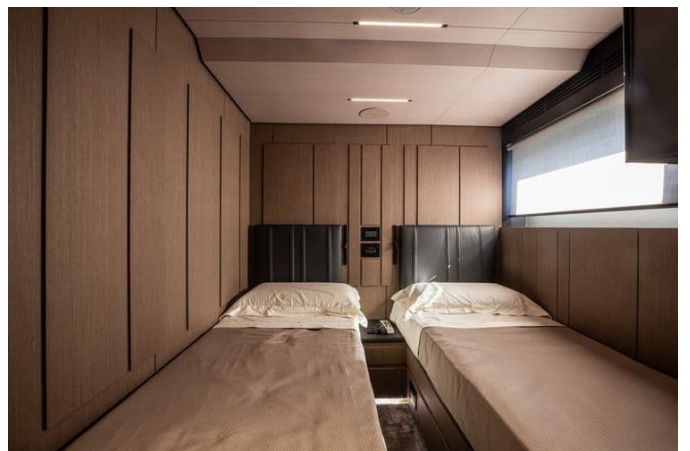
Volvo

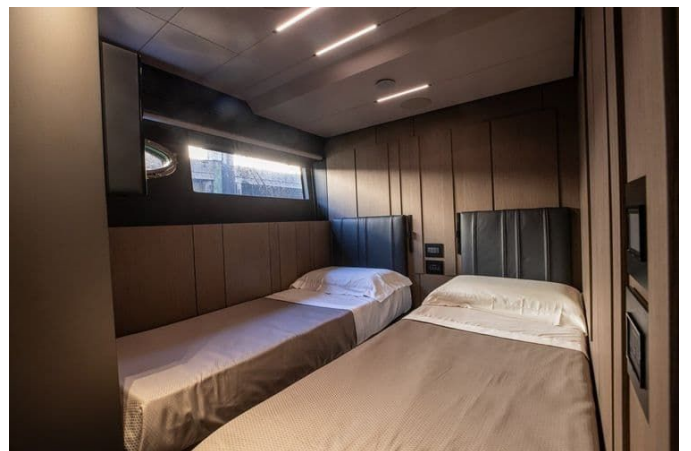
**Fuel Type:**

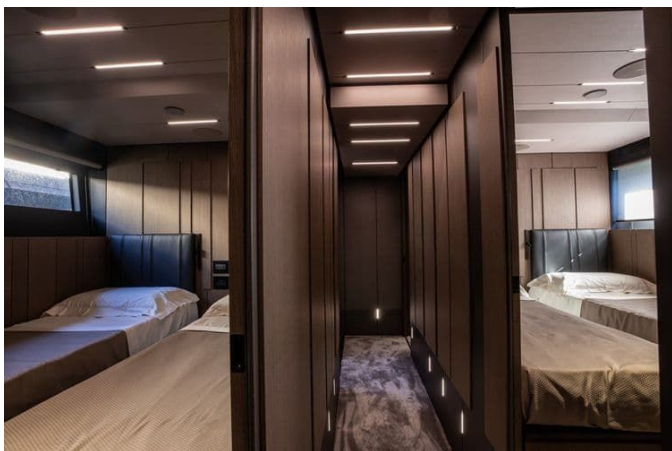
Diesel

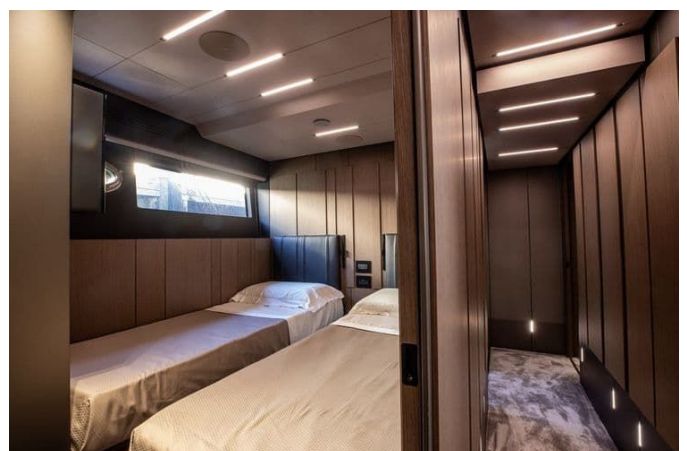
# GALLERY













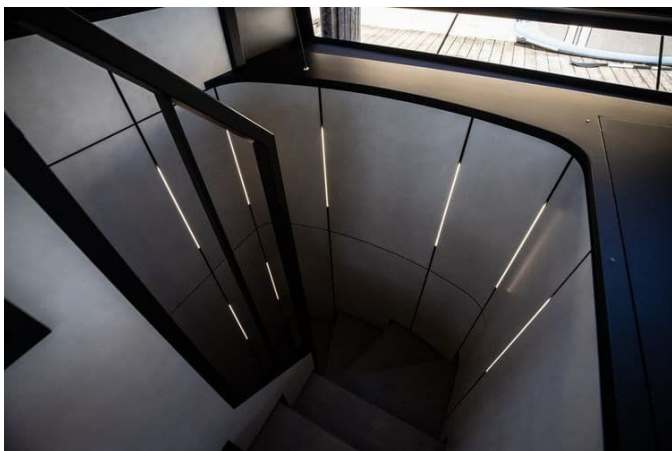






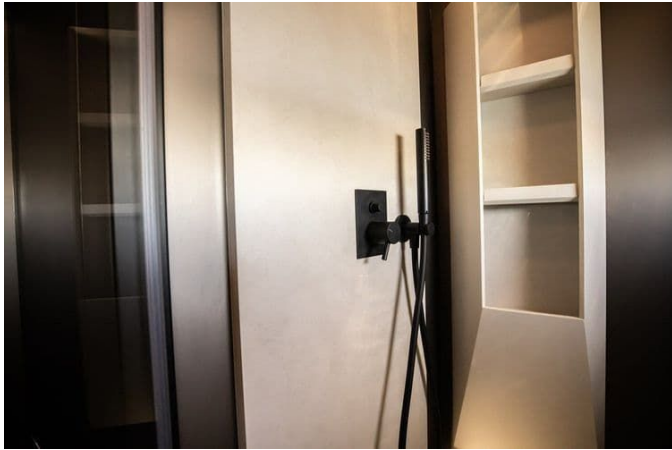
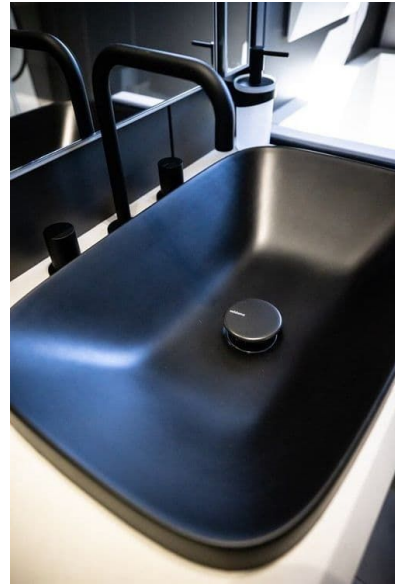


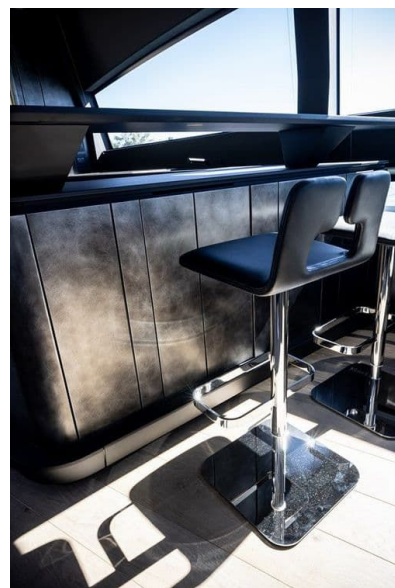
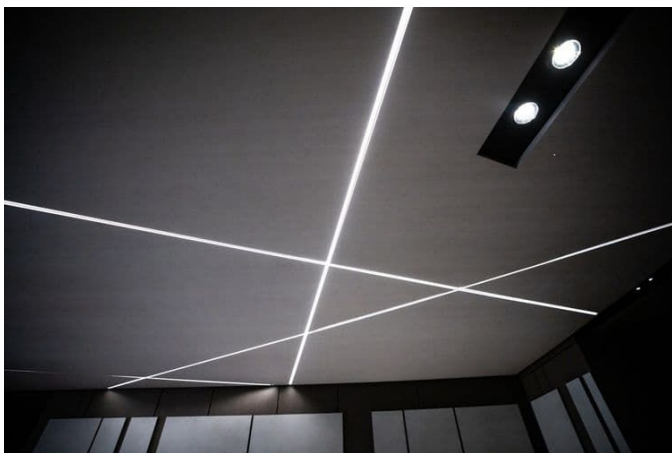
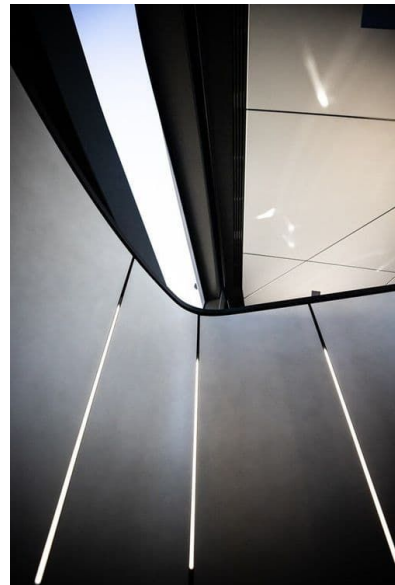


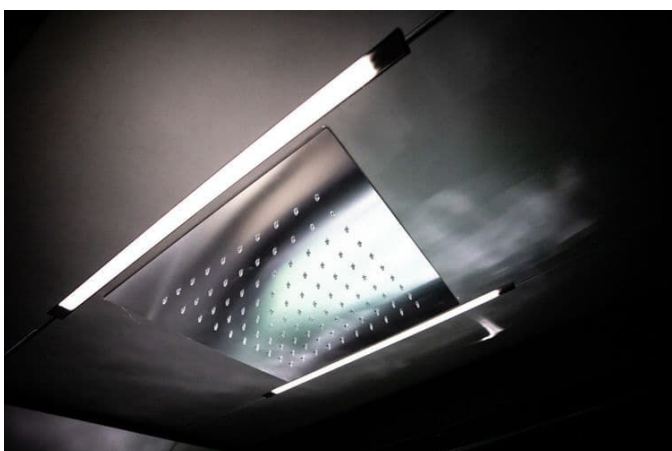
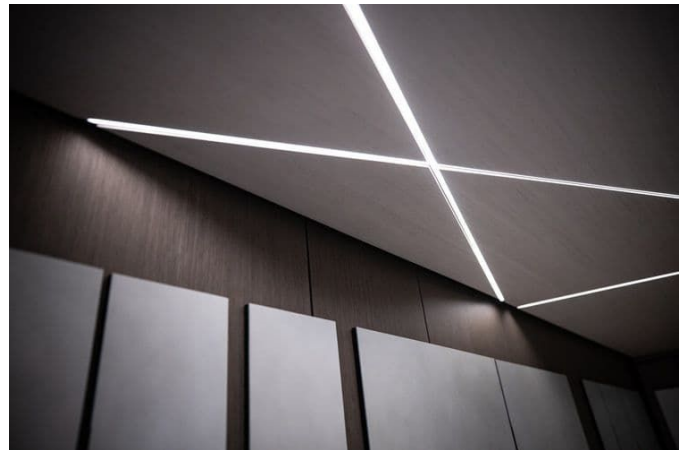
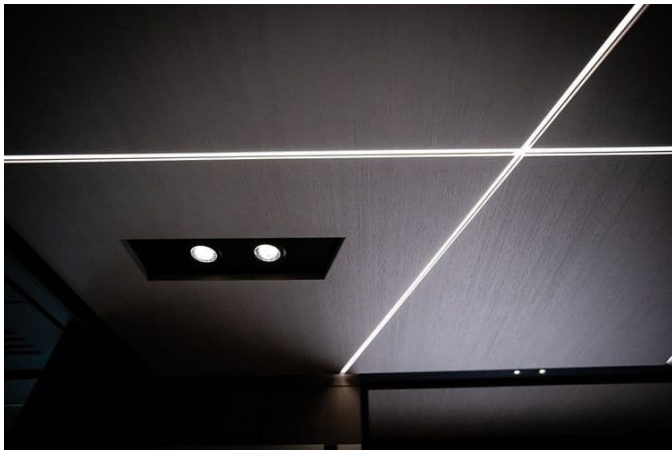




















---

# DETAILED DESCRIPTION

---

## Description

---

The 2025 Pershing GTX80, offered US DUTY PAID, represents a high-performance motor yacht conceived to marry a racing-derived spirit with expansive, luminous living spaces—a design realized through the Ferretti Group's Product Strategy Committee under Piero Ferrari in collaboration with Vallicelli Design to achieve a harmonious blend of sportiness and refinement. Cloaked in the striking Anniversary Silver finish that extends across hull and superstructure, the exterior presents purposeful detailing including a pair of side opening boarding gates, an aft sunshade awning complete with support poles, bespoke outdoor upholstery, and a reclining sunpad with integrated headrest arranged around an electrically actuated cockpit table, while additional manual stanchions secure the gangway. Nighttime presence is assured by Lumishore underwater illumination—two units beneath the bathing platform and four mounted lengthwise along the hull (two per side)—and an aft camera housed in the signal mast enhances situational awareness. Practical features such as mooring cleats at bow and stern, a protective windshield and side window cover, preparations for a jet ski, and a Glendenning shore power connection underscore the yacht's usability. Operations and handling are elevated by a secondary helm on the flybridge and helm controls that electrically slide forward, supported by Easy Dock for IPS, a dynamic positioning system, and a hydraulic stern thruster rated at 31 HP. A Seakeeper gyro and hull stabilizers ensure composed motion both underway and at anchor. Comprehensive navigation and communications are provided by a full Simrad navigation suite with monitor, Simrad AIS, and a KVH HD7 satellite antenna with a receiver for the upper salon. Inside, Italian craftsmanship shines with Poltrona Frau detailing and a custom salon table

with a leather insert set atop the main deck salon rug, while plush carpeting throughout all cabins adds a warm underfoot presence. The lower lounge is appointed with an ottoman and three dinette bar stools, and the port guest cabin features sliding beds for adaptable accommodation. Entertainment is generous, with a 49" TV in the salon, a 65" TV in the master cabin and a 55" TV in the lower dinette, complemented by upgraded 24" premium sound in the exterior areas and premium audio in the master. The Ambience package enriches onboard atmosphere alongside a wine cellar integrated into the bar unit, decorative lighting for the master and two decorative lamps for the salon, while privacy and comfort are assured by electric curtains and electric blackout curtains in the VIP and guest cabins. The heads for the master, VIP and guest cabins are appointed with elegant mosaics, refined shower floors and decorative wallpaper at the master bedhead. Everyday convenience is addressed with separate washer and dryer units, carefully finished galley floors and worktop, and an additional 15 liter boiler for the master with bypass. Behind the scenes, dependable power and extended autonomy are delivered by low maintenance batteries, two generator battery chargers and five HD satellite decoders, ensuring the seamless luxury experience expected of a Pershing GTX80.

## Standard equipment

---

The sundeck has been conceived as an open-air living room, equipped with a bespoke furniture unit incorporating a sink, an 85 L refrigerator and a grill, all subtly illuminated by integrated LED lighting. Entertainment is provided by a compact hi fi system paired with two watertight loudspeakers, while a GRP sofa, finished with a vinyl-upholstered backrest and fitted with built-in lockers, offers a refined place to unwind. Access between levels is seamless thanks to teak-laid steps with stainless-steel structure and a stainless-steel handrail, and the area is completed by a vinyl sunpad with its own dedicated storage

compartment.

Above, the antennas zone is organized to ensure precise navigation and unmistakable signaling, with a GPS antenna and a GRP radar arch designed to carry radar, additional antennas, signals and the horn, accompanied by a separate horn unit, navigation lights and two VHF antennas.

The sundeck helm station delivers intuitive command, featuring a bow thruster joystick, electronic levers for engine control, an engines joystick and a traditional helm wheel. An integrated autopilot and a unified system for alarms and electric data management operate alongside a single 16-inch multifunction touch display that serves as chartplotter, GPS, echosounder, monitoring system and engine interface. The helm is finished with carbon-fiber panels, a dedicated pilot seat, a Plexiglass windshield, a USB socket and a VHF radio.

Along the side walkways, careful detailing enhances convenience and safety with courtesy step lights, a fresh water filling cap and additional dedicated LED illumination. Deck handling is made efficient by two midship stainless-steel fairleads with integrated cleats, while two Pershing silicon logos on the sides and a starboard lateral gate complete the exterior appointments.

## Main deck

---

Aft, the cockpit unfolds as an elegant outdoor salon: an electrically operated aft locker door gives way to teak steps that descend to a hydraulically operated teak swim platform, while lateral hydraulic terraces broaden the alfresco living area. The deck is finished entirely in teak and accented with low level lighting, where a GRP sofa with vinyl upholstered seat and backrest faces a teak table set on a fixed support, accompanied by two folding chairs. Safety and practical systems are discreetly integrated into the portside furniture and include an emergency engine shut down remote control alongside a fire extinguishing system and alarm activation remote control. Daily service and convenience are

covered by a fuel filling cap, shore power socket, shore water inlet, manual swim ladder, a mini hi fi with two watertight loudspeakers, and an external shower, while a telescopic hydraulic hideaway gangway with two remote controls provides seamless boarding. Access to the engine room is via a teak hatchway.

Two aft mooring stations provide confident handling, each equipped with 1700W capstans with foot controls, stainless steel fairleads and, overall, four stainless steel mooring cleats. Forward, the outside dinette presents GRP sofas with seats and backrests upholstered in white vinyl, two life raft lockers, two additional lockers for storage, LED lighting and a second mini hi fi with two watertight loudspeakers. At the bow, the mooring station features a hatch with closure for access to the bow locker, a chain basket, seawater chain washdown, two fairleads and a seawater fire hydrant outlet. Ground tackle is substantial: one 50 kg galvanized anchor with joint, galvanized chain 100m 12mm, a stainless steel bow anchor roller, two stainless steel mooring cleats at the bow, mooring LED lights and a 2700W windlass operated from a waterproof control pad.

The galley has been specified for fine provisioning and service, appointed with a ceiling spotlight, a four burner ceramic glass hob, electric oven, extractor, a faucet over a stainless steel washbasin and an acrylic stone galley top. Refrigeration includes a 308 l fridge and a 106 l freezer, supported by a dishwasher for twelve and an icemaker to streamline service. Elegant finishes comprise parquet flooring, an acrylic stone shelf on lacquered support and under top furniture with lacquered doors, internal shelves and drawers, while two stools and a discreet rubbish bin maintain a poised and functional workspace.

The salon is a refined retreat defined by an aft door with sliding and rotating panes in black painted aluminum and crystal, complemented by an electrically operated up and down window. Entertainment is state of the art with

Apple TV, a 43" SMART TV and a hi fi surround 5+1 system with sintoamplifier, all controllable via a single iPad Mini remote and supported by a coastal internet system (GPRS/UMTS). Atmosphere is curated through ceiling LED lighting, lacquered ceilings, furniture and wall finishes, and side windows in monolithic/stratified tempered glass fitted with electric fabric roll curtains, while the sliding aft door is shaded by manual aluminum Venetian blinds. Comfort and dining are assured by a digitally controlled A/C system, two leather sofas, a folding dining table for eight, complete ceramic and glass sets for twelve and a stainless steel cutlery set for twelve. The descent to the lower deck is finished with leather panels and parquet steps, and the salon is completed with soft touch switch plates and a parquet floor.

At the helm, intuitive control meets refined detailing: a bow thruster joystick, a carbon fiber steering wheel covered in eco leather, a compass and electronic engine levers are set into a lacquered dashboard with carbon look panels, illuminated by ceiling spot LED lights. An engines joystick works in concert with an integrated autopilot function and the onboard integrated system for alarms and electric data management to provide seamless, redundant control. Navigation and monitoring are delivered through three 16 inch multifunction touch displays handling radar, chartplotter, GPS, echosounder, monitoring and engine data, with a dedicated 16 inch touch display for engine control. Engine room remote cameras are viewable from the helm, and systems include an echo box in hull transducer, an OBD socket, VHF radio, USB socket and an electric pantograph starboard side door for easy access. The helm is finished with a transparent tempered glass windshield with wiper/washer, parquet flooring, soft touch switch plates and pilot and co pilot seats upholstered in Frau leather with double electric controls; climate comfort is assured by the digitally controlled A/C system and the lower deck stair descent retains the leather panelled, parquet stepped treatment for a cohesive interior language.

## Lower deck

---

A refined lobby introduces the lower deck, where ceiling LED lighting gently bathes wood and lacquered panelling beneath an exquisitely crafted wooden ceiling, and the floor is laid in sumptuous carpet. Lacquered doors conceal considered storage spaces, including a dedicated laundry locker equipped with a washer/drier, while soft touch switch plates provide intuitive control throughout.

The master cabin is conceived as a private retreat, its ambiance shaped by ceiling LED illumination and walls clad with sole leather panels. An integrated audio video package with wi fi streaming links to a 43" SMART TV and two loudspeakers, all operable via a single remote control (iPad Mini).

Appointments include a leather upholstered beauty shelf, a digital safe and a digitally controlled air conditioning system for personalised comfort. The double bed in boat essence is framed and paneled in leather with under bed lockers and drawers; mattresses, pillows and bedcover are supplied, and seating comprises a leather ottoman and leather sofa. Fixed side windows in stratified crystal are paired with two stainless steel opening portholes with mechanical hooks, while manual roller decorative fabric curtains and manual roller fabric blinds provide privacy. The floor is covered in moquette and storage is abundant, with a portside wardrobe finished in wood with two leather doors, coat hanger and lighting, plus an additional wood wardrobe with leather door and lighting. Night storage is delivered by two wood nightstands with leather tops, complemented by a wooden entrance door, hi fi furniture to starboard with a leather door, and a wooden unit housing doors and a dedicated 50l refrigerator alongside a further fridge. Two reading lights and soft touch switches complete the suite.

The master bathroom continues the understated luxury with lacquered ceiling and walls and a lacquered washbasin unit with doors, crowned by a black wash basin set over a Corian floor. Climate is aided by an A/C outlet, and aluminum

Venetian blinds, ceiling LED lights and mirrors enhance the sense of space. Sanitary fittings include a ceramic bidet with combined bidet faucets, a combined washbasin faucet and an electric ceramic WC. Ventilation is provided by an opening stainless steel porthole with mechanical hook, and the shower is appointed with a tempered glass door, Corian shower tray, internal object holder, shower mixer and showerhead with handset. Practical details such as two clothes hooks, a lacquered blinds compartment, stern bulkhead sound insulation, toilet brush and roll holders, a towel rail and soft touch switch plates are included, and an emergency escape to deck via the crew area offers added reassurance.

Two double guest cabins mirror one another in warm timber finishes and meticulous detailing, each fitted with an audio video system with wi fi streaming, two loudspeakers and a 32" SMART TV. A blind compartment finished in eco leather sits beneath ceiling LED lighting and a ceiling with laminated frame and wood panels. Climate control is provided by a digitally controlled A/C system, while natural light enters through fixed side crystal windows with an opening stainless steel porthole featuring a mechanical hook. The floors are in moquette and convenience is assured by lacquered doors, mirrors and soft touch switch plates. Each cabin provides two single beds crafted in wood with leather bedframes and bedheads, under bed lockers, supplied mattresses, pillows and bedcovers, a wood nightstand with a leather top and a wood wardrobe with clothes rack and internal lighting. Two reading lights and wood clad walls complete the refined accommodation.

The starboard guest bathroom, which also serves as a day head, is equipped with an A/C outlet, aluminum Venetian blinds, ceiling LED lighting and a lacquered ceiling. A black wash basin sits upon a Corian floor within a lacquered washbasin unit with doors, and fittings include a combined washbasin faucet and an electric ceramic WC. Curtain and lacquered blind compartments and two lacquered doors organise the space, while ventilation is via stainless steel opening portholes with mechanical hooks. The shower

enclosure features lacquered panels with a tempered glass door, a Corian shower floor, shower mixer and showerhead with handset, plus an internal object holder. A mirror, toilet brush and roll holders, a towel rail and soft touch switch plates complete the specification.

The port guest bathroom reflects the same high standard, offering an A/C outlet, aluminum Venetian blinds, ceiling LED lights, a black wash basin over a Corian floor and a lacquered washbasin unit with doors. Practical appointments comprise a combined washbasin faucet, electric ceramic WC, curtain and lacquered blind compartments, lacquered ceiling, doors and walls, and a mirror. Fresh air comes through stainless steel opening portholes with mechanical hooks, and the shower unit is finished with lacquered panels, a tempered glass door, a Corian shower floor, shower mixer and showerhead with handset, together with an internal object holder. Soft touch switch plates, a toilet brush holder, a toilet roll holder and a towel rail round off the arrangement.

Forward, the VIP cabin is a light filled haven with an audio video system offering wi fi streaming, two loudspeakers and a 43" SMART TV. An eco leather blind compartment, ceiling LED lighting and a ceiling with laminate frame and wood panels create a warm interior, while a digitally controlled A/C system maintains the ideal climate. The double bed in wood with a leather bedhead incorporates underneath storage and is supplied with mattress, pillows and bedcover, and safety and access are enhanced by an emergency hatchway to deck through the chain peak. Fixed side windows in stratified crystal include two stainless steel opening portholes with mechanical hooks, and the floor is laid in moquette. Manual roller decorative fabric curtains and manual roller fabric blinds manage light, with a mirror over the headboard, two reading lights and soft touch switch plates enhancing comfort. Additional furnishings comprise a wall cabinet in wood with a leather topped surface, wood clad walls, a wood wardrobe with clothes rack and internal light, two wood nightstands with leather tops and a wooden entrance door.

The VIP bathroom mirrors the same refined specification, with an A/C outlet, aluminum Venetian blinds, ceiling LED lighting, lacquered ceiling, walls and door, and a black wash basin over a Corian floor within a lacquered washbasin unit with doors. A combined washbasin faucet, electric ceramic WC and a lacquered blind compartment support daily use, while fixed side windows in crystal and an opening stainless steel porthole with mechanical hook provide light and ventilation. The shower enclosure is equipped with lacquered panels, a tempered glass door, a Corian shower floor and a shower with mixer. A mirror, soft touch switch plates, toilet brush and roll holders and a towel rail complete the suite.

Crew operations are accessed from the starboard cockpit via an entrance that descends on stainless steel steps with teak treads to a dedicated crew area. The double crew cabin is arranged for both efficiency and rest, with an eco leather upholstered ceiling, two built in ceiling spotlights plus an additional ceiling spotlight, lacquered furniture and easily reached light switches. Temperature is controlled by a digitally managed A/C system and ventilation is through an opening stainless steel porthole with mechanical hook. Accommodation comprises two single beds with mattresses, pillows and bedcovers, two reading lights, walls upholstered in eco leather over a resilient vinyl floor, and a wireless speaker with charger. The crew bathroom provides practical facilities including a built in ceiling spotlight, ceramic wash basin with combined faucet, electric ceramic WC, lacquered ceiling, door and wall units, a mirror, light switches and a teak floor, together with a toilet brush holder, toilet roll holder and towel rail.

## Technical area

---

The technical area opens to a carefully organized engine compartment reached by a sturdy wood-and-steel ladder, where three VOLVO D13 IPS1350 powerplants sit enveloped in full thermal and acoustic insulation. Underfoot

the deck is clad in anti slip aluminum for secure movement, while the space is lit by two fluorescent fittings and six LED lamps, all conveniently controlled from a single light switch. Ventilation is assured by two air intakes and two electric extractors, and exhausts are managed by three engine exhaust mufflers paired with three stainless steel exhaust raisers. Electrical redundancy is provided by both an auxiliary and a main 32kW-60Hz generator, each housed in a soundproof case and supported by two generator manifold and gas separator units. The hydraulic installation comprises two hydraulic oil heat exchangers and a dedicated hydraulic unit serving the electrohydraulic systems and steering, with three coupling joints ensuring robust connections. An air compressor, two support poles and an E/pump A/C further enhance reliability and ease of service, while two waterproof cameras linked to the bridge deliver live monitoring for added safety. Precise handling is assured by an electric bow thruster and trim stabilizers with interceptors, offering confidence and control in every sea condition.

## Systems

---

Every system aboard has been configured to transform routine passages into effortless, luxurious cruising. The fresh water installation draws from a dedicated tank inlet and supplies a convenient outlet in the engine room via a fresh water pump with autoclave capable of operating at 24V and 230V, monitored continuously by a level sensor. Dockside service is simplified by a shore fresh water intake equipped with a pressure regulator. Capacity is generous, with a structural GRP tank of 1300 l, an 80 l water heater and a watermaker rated at 142 l/h.

Seawater operations are equally robust, with three active seawater intakes supplemented by two static intakes and a seawater outlet dedicated to chain wash and firefighting located in the forward locker. A dedicated electric pump serves both the fire extinguishing circuit and the chain wash function, while

five seawater basket filters protect the engines, generators, air-conditioning pumps, service systems and the firefighting circuit.

Grey water is handled by an electric pump for tank discharge with level sensing, and a manifold bypass allows emergency discharge of both grey and black water through the pumps; all wastewater is gathered in a structural GRP tank of 450 l. The black water arrangement mirrors this design, with its own electric pump tank discharge, level sensor, and a structural GRP tank of 450 l.

Fire safety blends automatic and manual systems, combining FM-200 protection for the engine room and system area with remote controls for emergency engine shutdown and activation of the fire extinguishing system and alarm. Portable equipment complements the fixed systems and includes a 2 kg CO<sub>2</sub> manual extinguisher, 1 kg powder extinguishers positioned in each room, and a comprehensive smoke detection network.

Comfort on board is assured by air conditioning installed in all cabins, bathrooms and the main deck salon (excluding the crew bathroom), driven by a Supertropical main A/C compressor with a capacity of 144,000 BTU.

The electrical architecture has been designed for reliability and operational flexibility. Bow thruster operation is supported by dedicated bow thruster batteries and charger, while a breaker box, separate AC and DC panels and a full-length hull earthing system tied to anode protection on the transom provide secure distribution. Engine management is delivered through three electronic digital panels, and redundancy is provided by an emergency parallel connection between service and auxiliary batteries. Starting power is supplied by three engine starter batteries with an engine battery charger, supplemented by a frequency converter and a refrigerator inverter at 60 Hz / 120 V, together with a generator battery charger. Protection and distribution features include grounding for seawater intake and railings, a ground fault interrupter 120 VAC-6 mA in all heads plus the galley and engine room, an inverter for domestic loads at 60 Hz / 120 V, and a main electric panel fitted

with magneto-thermic switches. Additional provisions include a parallel connection between generator batteries, two generator starter batteries, TV preparation with a 120 V cable, F connector and antenna cables, and comprehensive house power supported by service and auxiliary batteries with dedicated charging. Shore power is accommodated via a 100 A 60 Hz shore plug with shore socket and loose cable, American-type 120 V double sockets in each locker, a swift-off battery, a three-monophase shore power converter, and voltage monitoring for 24 V / 230 V.

Fuel systems are engineered for clarity and serviceability: a dashboard-mounted electronic fuel level remote indicator, three fuel separator filters, a sight gauge, two manual fuel discharge/load drainage pumps and a structural fuel tank of 5,100 l ensure dependable fuel management.

Bilge protection is comprehensive, with an automatic/manual immersion electric pump for bilge discharge in each watertight compartment monitored by level sensors, an electric pump with a valve system that permits either separated or centralized joint bilge suction, and an emergency engine room bilge discharge routed through the engines' intake suction.

# CONTACTS

---

Shestakov Yacht Sales is a brokerage company specializing in the sale and service of yachts worldwide. The company offers services for buying and selling both new and used motor yachts, sailing vessels, and luxury superyachts. They also provide yacht registration, insurance, technical maintenance, crew selection, and charter organization services across the U.S., Canada, Latin America, the Caribbean, and the Bahamas.

The founder and lead broker of the company is Andrey Shestakov, a licensed and certified expert with extensive experience in marine engineering and shipbuilding.

The company has an extensive network of partnerships with major yacht manufacturers worldwide and provides services in multiple languages, including Russian, Ukrainian, Spanish, and English. The office is in Dania Beach, Florida, USA.

For more information and to view available yachts, you can visit the company's official website: <https://shestakovyachtsales.com>

## Contact details

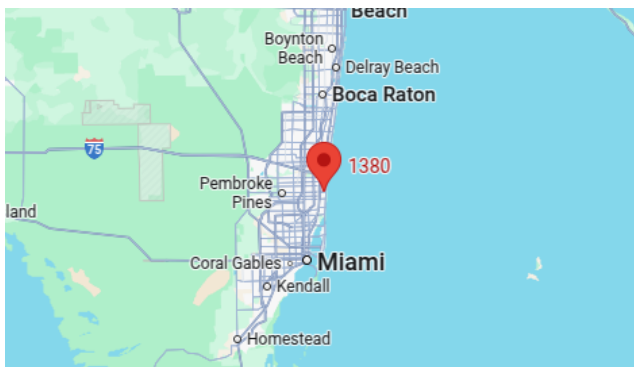
---

**Phone:** +1(954)274-4435

**Email:** [andrey@shestakovyachtsales.com](mailto:andrey@shestakovyachtsales.com)

## Address

---



1380 Weeping Willow Way, Hollywood,  
Florida 33019