



SHESTAKOV

Yacht Sales

HAWK - PERSHING



Builder: [PERSHING](#)

Beam: 18' 0" (5.51 m)

Year Built: 2010

Min Draft: 15' 0" (4.58 m)

Model: 80

Price: \$1,899,000 USD Subject to change.

[See full listing on our website](#)

Location: Fort Myers, United States

LOA: 80' 0" (24.51 m)

If you would like to buy a yacht **HAWK - PERSHING** or would like help answering any questions concerning purchasing, selling, or chartering a yacht, please call **+1(954)274-4435** or click here on <https://shestakovyachtsales.com>

TABLE OF CONTENTS

OVERVIEW 3

SPECIFICATIONS 10

 Basic Information 10

 Dimensions 10

 Speed, Capacities and Weight 10

 Hull and Deck Information 11

 Engine Information 11

GALLERY 12

CONTACTS 17

OVERVIEW

"HAWK" is an 80 foot Pershing express performance motor yacht that marries the brand's unmistakable Italian aggression with exhilarating speed, composed seakeeping, and refined appointment. Considered one of the yard's most desirable designs, this Pershing 80 marries generous interior volume with easy boarding and a surefooted ride, making her equally suited to private sport cruising or demanding luxury charter service. A passionate Pershing owner led a ground up mechanical refurbishment and a tasteful interior reimagining, combining crisp white and black ultra leather upholstery with a brilliant pearlescent bright white Axalta Imron finish and new teak decking to present a fully turn key yacht. Renewed throughout and, in many respects, outperforming newer builds, she offers a four stateroom layout with three heads plus separate crew accommodation with a full head. Built for the U.S. market, HAWK is equipped for 50/60 cycle electrical use and a heavy duty tropical air conditioning package, and a modern yacht controller with an intuitive joystick installed in 2022 enables single operator docking and low speed handling with confidence.

Her performance package centers on upgraded MTU 16V2000 M92 powerplants rated at 2,400 hp apiece driving Arneson ADS #15 surface drives, delivering the exhilarating character Pershing owners expect: approximately 44 knots at wide open throttle, a comfortable cruise near 37 knots, and an extended range approaching 420 nautical miles for longer passages. The shallow draft enhances access to thin water cruising grounds such as the Bahamas and expands itinerary options for distinctive charter experiences. Standout technical attributes include the twin 16V2000 MTUs, the four stateroom plus two crew arrangement, and well over one million dollars invested in recent enhancements, capped by the 2022 yacht controller that allows one person to handle docking duties.

A comprehensive list of upgrades elevates both appearance and function. The hull and superstructure were finished in a custom metallic pearl white Axalta Imron, new teak decks were installed, and fresh exterior soft goods in Silververtex silver marine vinyl complement X-PEL super tint applied to all salon glazing, including the forward windscreen. Every stateroom received fully automated blinds with blackout shades, new see-through black exterior window covers and black Stamoid cockpit covers sharpen the profile, and the interior was fully refinished in pure white ultra leather with a custom Stanton black and white Fairwater Onyx carpet throughout. MTU technicians performed major engine services and added reflective acoustic insulation in the engine room, while upgraded 24-volt LED lighting improves access and visibility. A full Besenzoni hydraulic passerelle with integrated retractable swim stairs was fitted, the forward electric helm sunroof received a new motor and belt and the aft sun/shade enclosure roof was refreshed, and Twin Disc bow and stern thrusters increase close-quarters control. Martin Marine completed servicing and repairs on the #15 Arneson drives, and cruising reliability is enhanced by a polished stainless anchor, a 2022 Lofrans windlass, and a new EPIRB. Triple Kahlenberg air horns announce arrivals in style, double-coated Trinidad bottom paint with new zincs was applied in 2023, a Hubble 25 kW Iso Boost auto-start transformer from Wards Marine Electric strengthens power management, and new white underwater lights installed in 2022 enrich evenings at anchor. Comprehensive service records, manuals, and documentation are available upon request.

The main salon is accessed through electric/hydraulic sliding glass doors to port and starboard, each fitted with electric blinds and protected glazing comprised of transparent, layered, tinted, tempered glass finished with X-PEL. The lounge was reconfigured in luminous white ultra leather with dramatic black accents, arranged with opposing seating to foster conversation and three movable ultra-white leather ottomans offering flexible seating and concealed storage. A down-lit quartz bar with a polished stainless façade, fixed custom

stainless bar stools, a new ice maker, a dedicated refrigerator, and a polished stainless sink and faucet create an elegant entertaining suite. Natural light pours in through large side windows and the salon flows seamlessly to the aft deck, with the custom Stanton black and white carpet providing continuity underfoot. Entertainment amenities include a motorized HDTV on an electric high/low lift paired with a KVH M7 satellite antenna installed in 2023, an upgraded multi zone Fusion audio system with all new JL speakers and subwoofers plus XM radio (2023), and lighting converted throughout to contemporary 4,000K dimmable LEDs set in polished stainless bezels. The U.S. spec tropical air conditioning system—serviced in 2023—relies on five compressors (a two bank and a three bank configuration) to deliver roughly 120,000 BTU across twelve air handlers, providing climate control to the salon, staterooms, and ensuites.

Forward of the salon, the helm is a modern command center beneath a sliding hideaway hardtop/sunroof, appointed with three matching white ultra leather helm seats and a console wrapped in white ultra leather with a black ultra leather steering wheel, LED toe kick lighting, and dedicated A/C controls. As a U.S. configured Pershing 80, HAWK carries 60 Hz electrical systems and generators; her upgraded MTU package and Arneson surface drives underscore her high performance express cruiser pedigree. The navigation and control suite includes the 2022 yacht controller for one person docking, fully automated flap joystick steering, an Arneson trim joystick, an MTU electronic LCD engine panel, and conveniently positioned electronic engine levers between the seats. Engine room and stern camera feeds are routed to the helm, the Twin Disc bow and stern thrusters are joystick operated, and a magnetic compass provides a trusted backup. A Navi OP LCD monitors rudder angle, flaps H2.0, and fuel levels, while Furuno autopilot and VHF systems integrate with a 2023 Garmin open array radar, twin Garmin chartplotters (2018), a Garmin depth sounder with navigational charts, and a multifunction Furuno instrument for depth, speed, heading, and temperature; night and

low visibility operations are aided by a 2023 FLIR M322 thermal camera. The engine room reflects meticulous engineering and accessibility. The MTU 2,400 hp upgrades are complemented by silencers, a generator exhaust fume separator, stainless reinforcements around the powerplants, and thermal acoustic insulation to minimize noise and vibration. Recent service items include four new starting batteries, a new generator battery charger, appliance battery cut offs, a 110V/60Hz air compressor, and a 2022 A/C raw water pump. Dynamic air intakes and new electric extractor fans optimize ventilation, and an additional engine exhaust silencer further refines the acoustic profile. Hydraulic systems encompass the steering oil tank and Twin Disc/Arneson interface plus a dedicated hydraulic unit for the Twin Disc bow and stern thrusters. Functional details range from strategically placed light switches and 110V outlets to waterproof cameras linked to the helm. Shore power and electrical management are simplified with a Glendinning 100A four pole cable retractor, a 230/115/24V breaker panel, 240V volt/amp meters, a 100A Carling switch for 24V DC shore input paired with a 100A/30m GFI. Freshwater systems include a pressure regulated intake, a structural GRP tank with pump and autoclave, a 60Hz water heater, and a watermaker. The seawater arrangement incorporates basket strainers for engines and generators, seawater intakes with a chain wash pump, and dedicated feeds to a large polyethylene grey water tank. Additional plumbing and pumping features include an auxiliary E pump tank, a discharge pump with a galley controlled three way valve for grey water, GRP tank level sensors, a manifold with bypass for emergency discharge of grey and black tanks, and a GRP auxiliary tank sensor. Safety systems are comprehensive: an emergency bilge discharge bypass through the engines, an E pump fire extinguisher, AJC service and fire hydrant pumps, a fixed fire suppression system, remote emergency engine shutdown with both manual and automatic extinguishers in the machinery space, and smoke detection throughout.

A staircase trimmed with polished stainless bullnose detailing leads to the

accommodation deck, where a full beam owner's suite offers a king walk around berth dressed in crisp black and white linens, surrounded by white ultra leather and painted oak joinery. The owner's stateroom includes a dressing table, a dedicated writing desk, a walk in wardrobe with a discreet safe, and a frosted glass door to a refined ensuite featuring an oversized new glass shower with a built in bench. Large dark tinted hull windows fill the cabin with natural light and frame cinematic water level views. The forward VIP contains a Euro queen walk around berth, nightstands with reading lights, generous closet space, twin hull windows, and a hinged circular stainless crystal glass deck hatch, with accent lighting beneath the bed and a private ensuite with a bright glass shower and picture window. Guest accommodations include a port cabin with side by side singles, generous locker storage, and direct access to the guest head with an expansive glass shower, and a starboard twin stateroom offering abundant storage, a broad hull window, one fixed single berth plus a convenient Pullman berth for flexibility. All staterooms feature fresh contemporary bedding, hull windows upgraded in 2022 to black tinted tempered glass, individual digital A/C controls, and upgraded televisions.

The aft deck is arranged for alfresco living with a broad upholstered sun pad and flowing bench dining that connects directly to the salon through sliding glass doors. A retractable, extendable hardtop provides shade on demand, while an outdoor galley, wet bar, zoneable audio, and subtle, dimmable overhead downlights set the tone from daytime entertaining to evening soirees. Practical features include port and starboard lockers with double hatches, an aft tender garage with a hydraulic hatch, launching rail and dedicated winch, and a hot/cold shower at the swim platform. Black painted aluminum aft doors and windows slide electrically to fully open the cockpit; stainless gates bear the Pershing 80 insignia, and a side boarding gate and ladder stow neatly on the garage ceiling. Crew quarter and engine room access is via a deck hatch and ladder, and a starboard freshwater sink, a new

230V stainless BBQ, and a 120V/60Hz Raritan ice maker plumbed to the main tank keep the deck well provisioned. Two Wi-Fi cameras integrate with the helm display for added situational awareness. Forward, the bow lounge is a secluded social area with a generous U-shaped settee beneath a manual canopy and a large sun pad; LED deck lights trace the walkways, a metallic white Imron cockpit table anchors the space, ergonomic backrests add comfort, and a white Bimini can be deployed as needed. Waterproof JL speakers with independent volume (Bluetooth or manual) interface with the yacht's audio system, freshwater is plumbed to the anchor locker, stainless handrails run along the superstructure, fore/center/aft mooring cleats are fitted, and a robust stainless rail with stanchions secures the foredeck. Ground tackle is handled by a 2,500-watt Lofrans windlass with galvanized chain and foot controls, while storage lockers forward of the lounge keep gear tidy. Twin windscreen wipers with washers maintain the transparent layered tinted tempered windscreen, all protected by X-PEL.

The galley, accessible from the salon via the port staircase or directly from the cockpit ladder for emergency access, is appointed with white quartz countertops, a sleek striated metallic backsplash, custom cabinetry with abundant storage, and a large polished stainless sink. Adjacent crew quarters offer two bunks with under-berth storage, a hanging locker, a private crew safe, independent A/C controls, and a separate head with an enclosed glass shower. A dedicated utility space houses a Miele washer and dryer (2022) with room to convert to a third crew bunk if required. Premium appliances include a Miele stovetop/oven combo (120V/60Hz), a Miele ceramic cooking top (220-240V/60Hz), a Miele dishwasher (120V/60Hz), and oversized Sub-Zero refrigerator and freezer units (120V/60Hz) supported by a 24V inverter. The galley also affords direct engine room access for convenient servicing. Aft, the garage hangar opens by electric door to reveal an exceptionally large bay capable of accommodating a new model Williams 345 Jet Tender alongside a full-size wave runner; the tender and wave runner are not

included in the sale. The hydraulic swim platform lowers for launch and recovery aided by two electric winches with remote control, and electric/hydraulic swim stairs on the port side extend into the water for effortless reboarding. For protection, a full complement of covers is supplied for all seating, tables, side windows, and the windscreen. In every respect, HAWK presents as a striking luxury express cruiser and performance sport yacht—a rare U.S. spec Pershing 80 finished in shimmering pearl white, freshly refit, comprehensively serviced, and exquisitely prepared for immediate enjoyment by her next owner.

SPECIFICATIONS

Basic Information

Model Year:
2010

Country:
United States

Year Built:
2010

Dimensions

LOA:
80' 0" (24.51 m)

Beam:
18' 0" (5.51 m)

Min Draft:
15' 0" (4.58 m)

Speed, Capacities and Weight

Water Capacity:
343 Gallons

Fuel Capacity:
1572 Gallons

Hull and Deck Information

Hull Material:

Fiberglass and Plastic Yachts

Hull Designer:

N/A

Deck Material:

Fiberglass

Interior Designer:

N/A

Hull Configuration:

N/A

Engine Information

Engines:

2

Engine Type:

Inboard

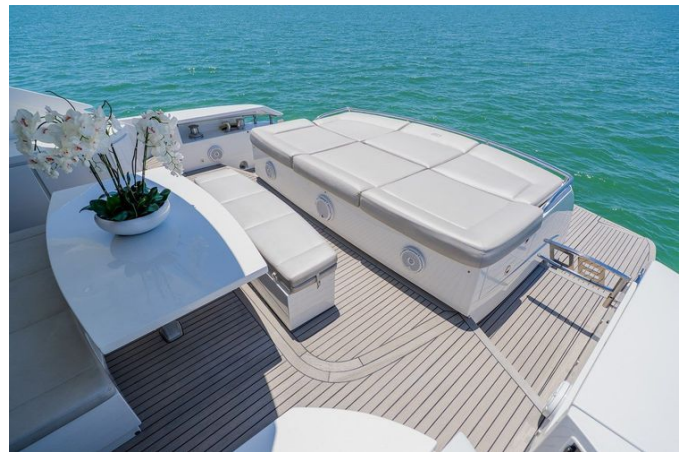
Manufacturer:

MTU

Fuel Type:

Diesel

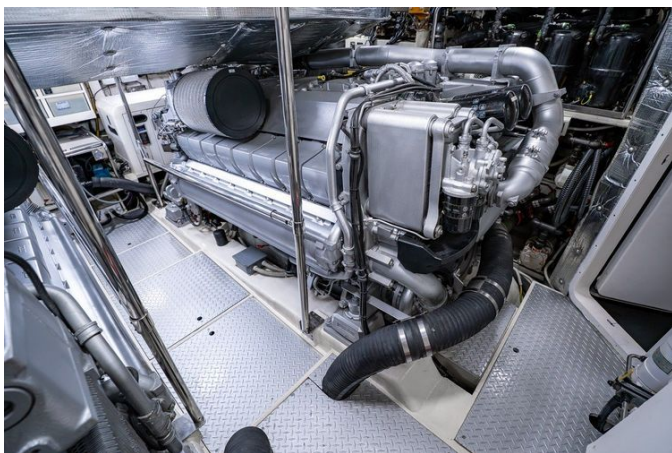
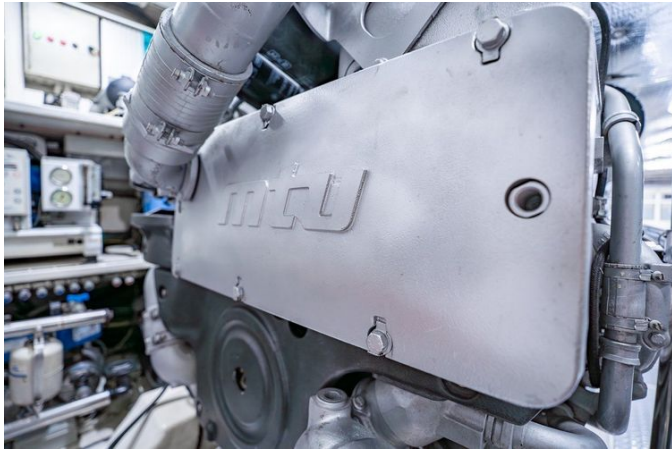
GALLERY











CONTACTS

Shestakov Yacht Sales is a brokerage company specializing in the sale and service of yachts worldwide. The company offers services for buying and selling both new and used motor yachts, sailing vessels, and luxury superyachts. They also provide yacht registration, insurance, technical maintenance, crew selection, and charter organization services across the U.S., Canada, Latin America, the Caribbean, and the Bahamas.

The founder and lead broker of the company is Andrey Shestakov, a licensed and certified expert with extensive experience in marine engineering and shipbuilding.

The company has an extensive network of partnerships with major yacht manufacturers worldwide and provides services in multiple languages, including Russian, Ukrainian, Spanish, and English. The office is in Dania Beach, Florida, USA.

For more information and to view available yachts, you can visit the company's official website: <https://shestakovyachtsales.com>

Contact details

Phone: +1(954)274-4435

Email: andrey@shestakovyachtsales.com

Address



1380 Weeping Willow Way, Hollywood,
Florida 33019