

SABI - AZIMUT YACHTS



Builder: [Azimut Yachts](#)

LOA: 80' 0" (24.38 m)

Year Built: 2015

Beam: 18' 0" (5.72 m)

Model: N/A

Min Draft: 18' 4" (5.58 m)

Price: \$2,999,999 USD Subject to change.

Max Draft: 20' 3" (6.17 m)

[See full listing on our website](#)

Location: Miami, United States

Cruising Speed: 26 Knots (29.92 MPH)

Max Speed: 30 Knots (34.52 MPH)

TABLE OF CONTENTS

OVERVIEW	3
SPECIFICATIONS	5
Basic Information	5
Dimensions	5
Speed, Capacities and Weight	6
Accommodations	6
Hull and Deck Information	6
Engine Information	7
GALLERY	8
CONTACTS	27

OVERVIEW

Available for private viewing by appointment, this 2015 80' Azimut Flybridge (82' LOA) marries incisive Italian styling with assured seafaring capability and a suite of considered upgrades. A genuine flybridge motor yacht that functions as an elegant luxury cruiser, she is arranged with four staterooms each with en suite facilities, and separate crew accommodations featuring two berths and a dedicated head, an organization equally suited to intimate escapes or extended blue water passages.

The main salon and dining area are airy and luminous, framed by expansive windows that bring the ever changing seascape inside and create an inviting, refined social center. Above, the hardtop flybridge is a signature realm, equipped with a retractable sunroof, a Jacuzzi, a wet bar complete with BBQ, a substantial dining table and multiple lounge areas. An electric canopy extends shade at the touch of a button so whether hosting a spirited evening or enjoying a tranquil sunset supper the atmosphere is perfectly calibrated. Forward, the bow presents broad sunpads with adjustable backrests and additional seating, while the aft cockpit provides another effortless entertaining zone with its own wet bar and grill. Teak decking runs continuously from the cockpit along the side decks and across the flybridge, and new underwater lights trace her lines after dusk.

Propulsion comes from upgraded twin MAN V12 engines rated at 1,800 HP each, with approximately 940 hours, delivering a composed cruising experience and ample reserve for spirited passages. Precision in tight quarters is aided by bow and stern thrusters and Xenta joystick controls at both helms, simplifying marina work and close quarters maneuvers. A hydraulic swim platform eases water access and tender handling, and a passerelle offers straightforward shore connection.

Her navigation and onboard systems are equally robust. The Raymarine

Platinum Package furnishes crisp touchscreen navigation, augmented by a FLIR thermal camera, SAT TV and HD video cameras for enhanced situational awareness and entertainment. Redundant electrical capacity is provided by twin Kohler generators (2 x 32 kW) to support systems underway or at anchor, while a watermaker increases autonomy. The flybridge hardtop with opening sunroof balances shelter and openness, and the two well equipped wet bars — one on the flybridge and one aft — keep refreshments and grilling within easy reach.

Interior appointments are executed to a high standard with pragmatic luxuries that make life aboard effortless. Separate washer and dryer units, a dishwasher, a wine cooler and icemakers all simplify provisioning and daily routines, and the heads are appointed with elegant Carrara marble flooring. The four cabin layout affords privacy for owner and guests, while the dedicated crew cabin with two berths and its own head supports professional service on longer voyages. A 13' AB tender with a Yamaha 40 hp outboard stows securely ready for shore excursions.

Professionally owned and diligently maintained, this performance minded planing hull yacht presents beautifully, runs strongly and reflects consistent care and meaningful upgrades, offering a rare conjunction of style, substance and intelligent design that transforms every day on the water into something memorable.

SPECIFICATIONS

Basic Information

Category:
Motor yachts

Year Built:
2015

Sub category:
Motor Yacht

Country:
United States

Model Year:
2015

Dimensions

LOA:
80' 0" (24.38 m)

Beam:
18' 0" (5.72 m)

Min Draft:
18' 4" (5.58 m)

Max Draft:
20' 3" (6.17 m)

Speed, Capacities and Weight

Cruise Speed:

26 Knots (29.92 MPH)

Water Capacity:

315 Gallons

Max Speed:

30 Knots (34.52 MPH)

Fuel Capacity:

1585 Gallons

Gross Tonnage:

58 Pounds

Accommodations

Sleeps:

8

Crew Cabin:

1

Total Heads:

4

Crew Berths:

2

Hull and Deck Information

Hull Material:

Fiberglass and Plastic Yachts

Hull Designer:

Stefano Righini

Deck Material:

Fiberglass

Interior Designer:

Carlo Galeazzi

Hull Configuration:

Monohull

Engine Information

Engines:

2

Fuel Type:

Diesel

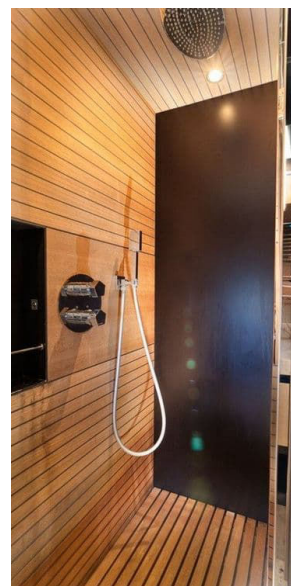
Manufacturer:

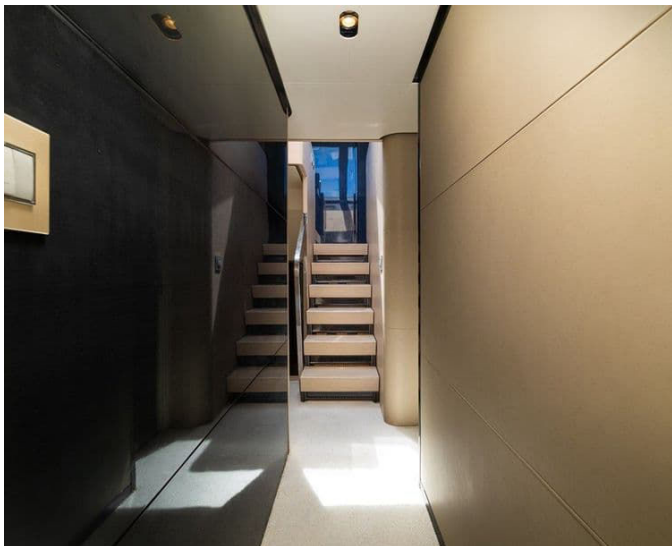
MAN

GALLERY

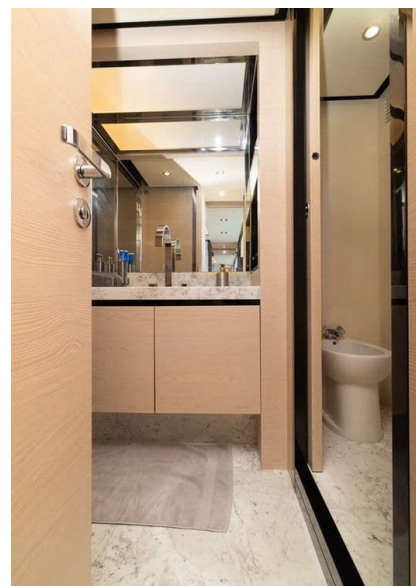










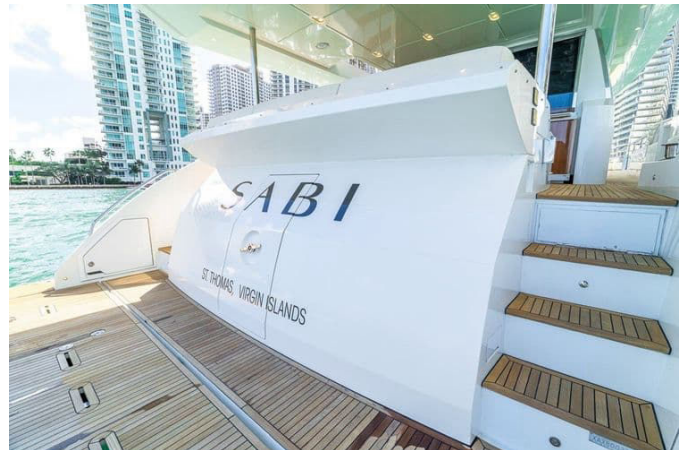




























CONTACTS

Shestakov Yacht Sales is a brokerage company specializing in the sale and service of yachts worldwide. The company offers services for buying and selling both new and used motor yachts, sailing vessels, and luxury superyachts. They also provide yacht registration, insurance, technical maintenance, crew selection, and charter organization services across the U.S., Canada, Latin America, the Caribbean, and the Bahamas.

The founder and lead broker of the company is Andrey Shestakov, a licensed and certified expert with extensive experience in marine engineering and shipbuilding.

The company has an extensive network of partnerships with major yacht manufacturers worldwide and provides services in multiple languages, including Russian, Ukrainian, Spanish, and English. The office is in Dania Beach, Florida, USA.

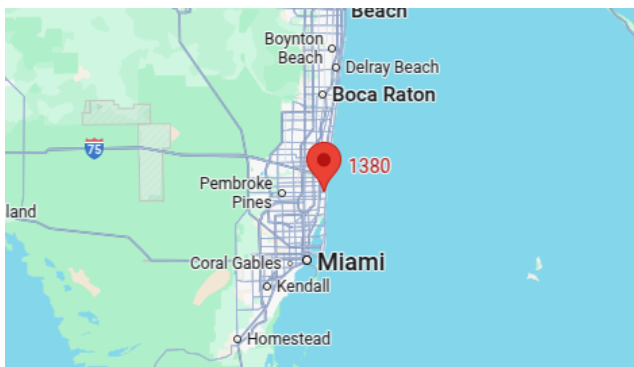
For more information and to view available yachts, you can visit the company's official website: <https://shestakovyachtsales.com>

Contact details

Phone: +1(954)274-4435

Email: andrey@shestakovyachtsales.com

Address



1380 Weeping Willow Way, Hollywood,
Florida 33019