

SHERI LYNN - HORIZON MOTOR YACHTS



Builder: [HORIZON MOTOR YACHTS](#)

LOA: 80' 0" (24.38 m)

Year Built: 2023

Beam: 22' 0" (6.83 m)

Model: FD80

Max Draft: 18' 4" (5.58 m)

Price: \$6,595,000 USD Subject to change.

Cruising Speed: 17 Knots (19.56 MPH)

[See full listing on our website](#)

Location: Palm Beach, United States

Max Speed: 23 Knots (26.47 MPH)

TABLE OF CONTENTS

OVERVIEW	3
SPECIFICATIONS	4
Basic Information	4
Dimensions	4
Speed, Capacities and Weight	4
Accommodations	5
Hull and Deck Information	5
Engine Information	5
GALLERY	6
DETAILED DESCRIPTION	23
CONTACTS	30

OVERVIEW

Step aboard SHERI LYNN, a US flagged 2023 Horizon FD80 fast displacement motor yacht, and discover elevated refinement presented in turn key condition with all services current. Her dramatic floor to ceiling glazing bathes the interior in natural light and seamlessly links expansive saloons to well appointed indoor and alfresco entertaining areas, while a cleverly conceived layout offers amenities and flow that rival those of many much larger superyachts. With a beam in excess of 22 feet, she delivers genuine mega yacht comfort across an elegant 80 foot platform, propelled by twin CAT C32s and protected by transferable CAT Platinum Plus coverage through March 2028. Available for viewing in Palm Beach.

SPECIFICATIONS

Basic Information

Model Year:
2023

Country:
United States

Year Built:
2023

Dimensions

LOA:
80' 0" (24.38 m)

Max Draft:
18' 4" (5.58 m)

Beam:
22' 0" (6.83 m)

Speed, Capacities and Weight

Cruise Speed:
17 Knots (19.56 MPH)

Water Capacity:
400 Gallons

Max Speed:
23 Knots (26.47 MPH)

Fuel Capacity:
2700 Gallons

Gross Tonnage:
108 Pounds

Accommodations

Sleeps:

6

Crew Cabin:

1

Total Heads:

4

Crew Berths:

2

Hull and Deck Information

Hull Material:

Fiberglass and Plastic Yachts

Hull Designer:

Horizon Yachts

Deck Material:

Fiberglass

Interior Designer:

Horizon Yachts

Hull Configuration:

Monohull

Engine Information

Engines:

2

Engine Type:

Inboard

Manufacturer:

Caterpillar

Fuel Type:

Diesel

GALLERY





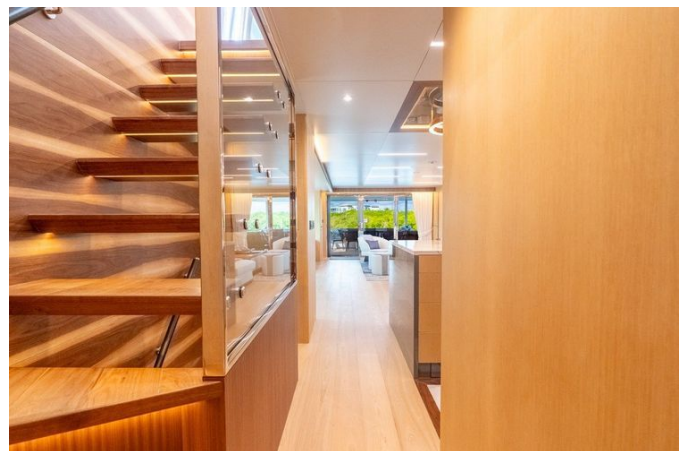




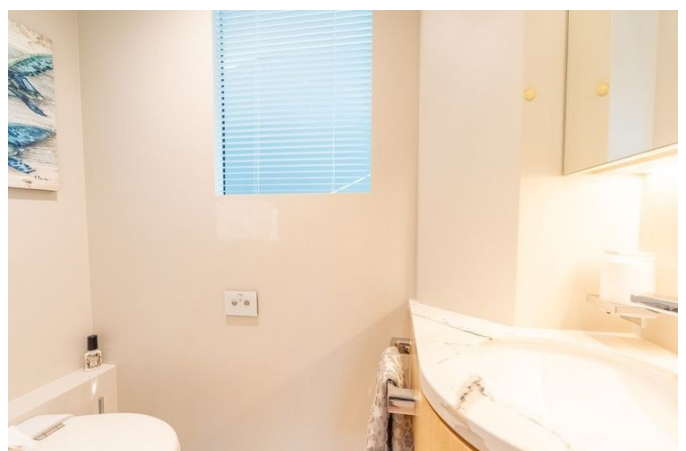


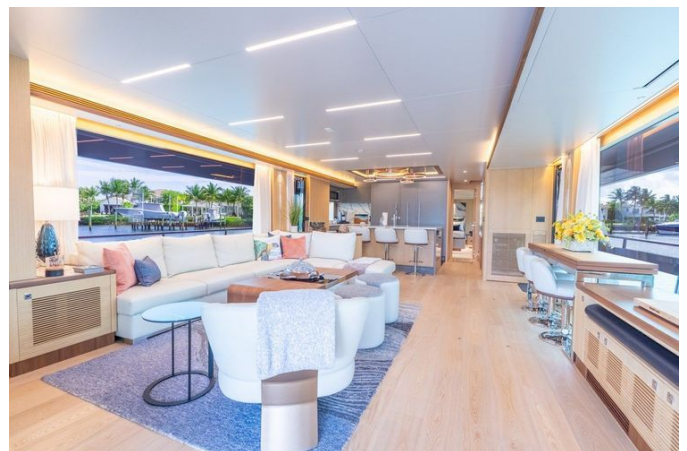




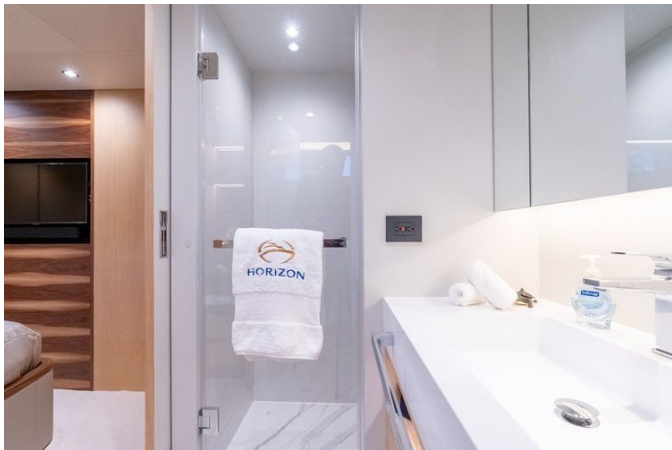




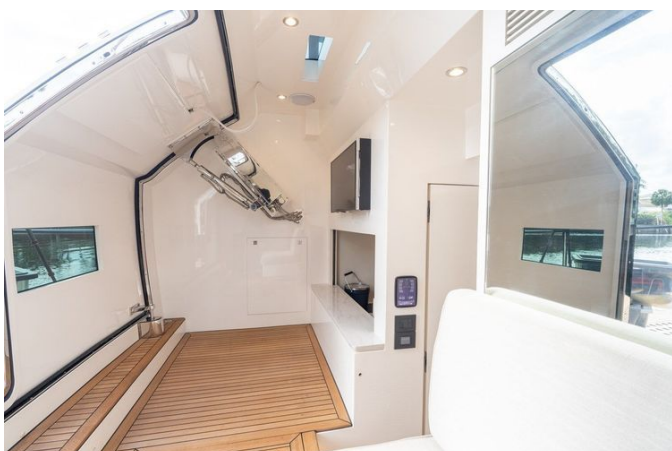
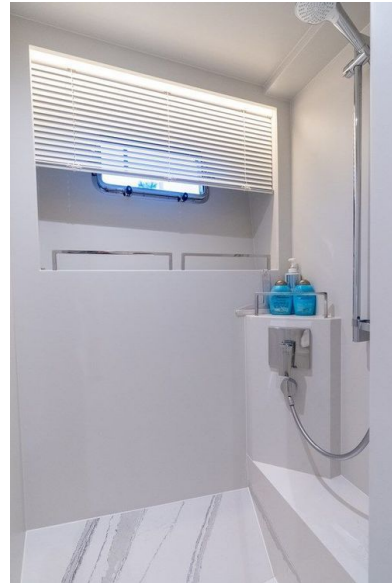


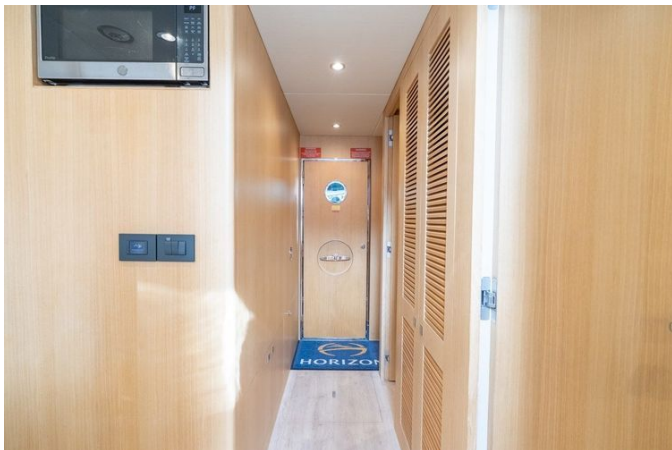














DETAILED DESCRIPTION

Sheri Lynn Horizon FD80

US-flagged and pre-tariff, offered at a substantial savings compared with a new build, SHERI LYNN is a striking one-owner 2023 Horizon FD80 that marries contemporary styling with exceptional versatility and purposefully arranged entertaining spaces. Constructed on Horizon's renowned Fast Displacement hull, she delivers generous interior volume while expansive floor-to-ceiling glazing in the salon, dining area, and on-deck master stateroom floods the living areas with light and affords sweeping water views that enhance the sense of connection to the sea.

Down below, the yacht accommodates guests in three generous staterooms, including two exquisitely finished VIP suites, and a distinctive garage window channels daylight into the beach club, reinforcing the open, airy ambiance throughout the lower deck. Exterior living aboard SHERI LYNN is reminiscent of much larger vessels, with broad social decks, side wing stations that greatly enhance visibility when docking, and a bridge-deck aft spacious enough to stow a 16-foot tender—an arrangement that is both highly functional and supremely elegant, created with owner-operators in mind to provide the conveniences, comfort, and innovations usually reserved for larger megayachts.

Mechanically she is powered by twin Caterpillar C32 engines with transferable CAT Platinum Plus Extended Warranties in effect through March of 2028 and has received meticulous professional care and recent, comprehensive service: Caterpillar C32 service completed in May 2025; new bottom paint applied in November 2025 with Prop Speed also applied in November 2025; fire suppression system recertified in December 2025; teak reconditioned in February 2026; full water maker and Spot Zero service performed in May 2026;

and a full exterior compound and wax completed in June 2026. Showing approximately 480 hours on the main engines and 496 hours on the generators, SHERI LYNN is turnkey and impeccably maintained—an exceptional opportunity to acquire one of Horizon’s most sought-after models, presented with the professionalism and care discerning buyers expect from Shestakov Yacht Sales.

Features

Propulsion is provided by twin CAT C-32 1600 HP diesel engines, each covered by transferable CAT Platinum Plus extended warranties through March 2028; the engines are mounted on a stainless steel engine bed bonded to the FRP hull girder and monitored by an engine alarm system built to CAT specifications. Maneuvering is simplified with a remote control that governs throttles, gears and thrusters via a plug on the aft deck and an additional plug at the helm, augmented by wired engine controls, Hypro or equivalent power steering and a stainless steel emergency tiller located in the rudder cabin. The driveline is engineered for durability and efficiency with Aqualoy 22HS stainless steel shafts paired with the Sea Torque system, high-performance S-class five blade propellers, a bronze main strut with backing plate and an underwater exhaust arrangement incorporating bypass mufflers. Stability and precise station-keeping are assured by Side-Power zero-speed stabilizers, a Side-Power SH550 bow thruster and SH420 stern thruster, and four Zipwake interceptors steered by a Garmin GPS antenna. The engine room is intentionally quiet, cool and well-ordered thanks to a Delta T ventilation system, a heavy-duty insulated engine room door, stainless grab rails flanking each engine, LED overhead lighting, an on-board air compressor and pre-engineering for installation of a Bauer Junior II dive compressor. The vessel’s mechanical systems are comprehensive: a total fuel capacity of 2,700 gallons resides in tanks equipped with sight and electric gauges and

protected by dual Racor 75/1000 MA fuel filter/water separators on each engine, supported by two electric fuel transfer pumps, a Reverso FPS210 fuel polishing system and oil-change pump systems for engines, gears and generators, plus two Racor 500 MA fuel filters. Freshwater requirements are supplied from a 400-gallon FRP water tank with marine-grade plumbing, twin 20-gallon water heaters and a Dometic watermaker capable of producing 1,800 gallons per day; a high-volume AC freshwater pressure pump with a DC backup, freshwater charcoal filters plumbed into the freshwater pump line and a shore water inlet complete the system, while all saltwater-cooled equipment is clear-lined and fully plumbed. Climate comfort is delivered by a Marine Air chilled-water air conditioning system with a backup seawater cooling pump and a hot-water circulation pump. Sanitation is managed by Tecma Silence Plus heads feeding a 100-gallon holding tank with Y-valve and deck fitting for dockside pump-out, a grey-water sump pump system with electric level indicators and a Headhunter sanitary treatment system.

Safety and damage-control features are robust, including an electric Rule bilge pump, two manual bilge pumps located in the engine room and forward staterooms, a high-water bilge pump, bilge exhaust ventilation fans, engine room fire insulation and fire resistant treatment at pipe penetrations, four portable fire extinguishers, an automatic fire damper system and an integrated fire system in the skylounge. The electrical architecture includes LED illumination throughout interior and exterior spaces, two Onan 29 kW 60 Hz generators housed in sound shields, a Maretron monitoring and control package and an Octoplex multiplexing power distribution system. Shore power handling is streamlined with two Glendinning 100 Amp cable masters—each supplied with a 75-foot power cable—and two Acme ISO boost transformers. Battery capacity and redundancy are provided by four Lifeline 255 Ah start batteries for engines and generators with dedicated chargers and four Lifeline 255 Ah AGM ship's batteries, all operating on DC 24V with combined inverter/chargers for seamless power conversion.

Protection and convenience are enhanced by GFI circuits for all AC outlets in exterior zones, heads, the galley and the engine room, an electrolysis bonding system and cathodic protection employing zinc anodes for shafts, struts and associated underwater metals. Exterior illumination includes six underwater lights, four flood lights (two mounted on the mast and two on the boat deck), two LED searchlights and pre-wiring for an LED boat name on the stern and on both sides of the flybridge; full connectivity is provided through Starlink.

The beach club forms an indulgent waterside living room accessed by a hydraulic full-width stern door with a pantograph door centered within; it can be isolated from the crew galley by an electric hinged partition. An onboard ice maker produces 130 pounds of ice per day to support tender operations, while a sofa with accompanying table and ottoman creates a comfortable lounge. The hydraulic hinged swim platform is rated to carry up to 1,500 pounds and includes two pop-up cleats, an integrated swim ladder and a built-in hot-and-cold shower mounted above the platform; two removable corner rails with additional sockets on the fixed portion of the platform add flexibility. Entertainment and audio are handled by a 32-inch LED TV and a Sonos marine stereo system.

Tender operations are served by an Aquascan F-14 Sprinter jet-drive tender, while the skylounge and boat deck are configured as a private social and operating domain with a sofa, table and ottomans, a dayhead and two STIDD helm chairs placed before a custom helm console that presents a complete suite of engine instrumentation, monitoring for key systems and fuel and water gauges, all guided by a Ritchie Supersport magnetic compass. A surveillance camera system with PTZ coverage for the aft deck and engine room enhances situational awareness, and the area includes a bilge pump control panel, navigational lighting and two chain counters—one dedicated to each windlass. The multifunction sunpad on the boat deck converts into an L-shaped sofa and table with cushions and is pre-wired and pre-engineered for a jacuzzi installation; additional amenities include a Sonos stereo system,

non-skid decking, a walk around bridge design with the port side providing access forward to the bow, a Vitrifrigo stainless steel refrigerator/freezer, a sink with Raritan icemaker, a 24 inch propane BBQ on a hi lo stand with propane supply, custom cabinet storage, sunshades and a hydraulic Steelhead ES1500 davit mounted to a reinforced structure.

Practical deckwork is thoughtful and robust: oversize drains with strainers sit at each corner with internal overboard discharges, there is one hatch on the hardtop fitted with a ship loose retractable ladder, and a radar arch with antenna bracket supports chrome plated air horns atop the arch. The helm and living areas are enclosed by frameless windshields of clear tempered laminated low E glass and side windows of tinted tempered laminated glass. Deck circulation is secure with a heavy duty 1 3/4 inch handrail on 1 1/2 inch stainless steel stanchions with steel cables, four forward and aft deck hawsers, and nonskid side and bow decks accessed from a starboard staircase and the main-deck walkaround. Forward, the foredeck features built in U shaped seating with sliding tables, a sun pad with drink holders and a dedicated sunpad cushion to cover the skylight, protected by sunshades; two pop up LED lights and separate freshwater and seawater washdown systems keep the area functional and inviting.

Anchoring and mooring equipment are substantial, with two 300 foot lengths of high tensile 1/2 inch anchor chain on rollers with devil's claw stoppers, two 200 lb stainless steel pocket anchors and twin Maxwell VWC3500 windlasses with winches. A custom splitting cockpit table, bulwark side doors positioned near the aft deck for easy boarding and a three panel folding and sliding salon door enhance hospitality and traffic flow. Teak decking graces the aft deck, steps and swim platform, complemented by built in aft bench seating with a hi lo table and loose chairs; two sets of tables with leg sockets permit extended dining configurations. Additional conveniences on the aft deck include a portside refrigerator, glazed windows on the bar top that pour light into the beach club, wing/weather doors to port and starboard leading to the

side decks, an electric flip down 32 inch TV recessed in the ceiling and pre wiring for an LED boat name on the stern, all paired with a Sonos stereo system.

The salon is a luminous, elegant living space framed by full height aft windows with electric single treatment curtains and anchored by a dayhead. An L shaped leather sofa with underseat storage is arranged around a custom area rug and coffee table with ottomans, while a portside buffet cabinet and a convertible folding dining table with stools allow the area to transition from casual lounge to formal dining; a breakfast bar with a U Line wine cooler promotes informal gatherings. Hinged opening doors to port and starboard near the galley, and a 55 inch LED TV that folds down from the ceiling, support an immersive entertainment package that includes a Sonos home theatre system, Blu ray player and Apple TV.

The professional galley is appointed for serious culinary work with a full height pantry, abundant storage and Cambria quartz countertops and floors. Appliances include a full height Fisher & Paykel freezer with ice maker, a full height Fisher & Paykel refrigerator, a Miele oven and cooktop, a Bosch microwave with range hood and a Miele dishwasher, complemented by a large stainless steel sink with garbage disposal, a Kitchenaid trash compactor and a toe kick step stool stored beneath the galley island cabinet.

Accommodation is arranged for privacy and comfort. The master stateroom offers a king bed with storage drawers, a walk in closet plus an additional closet, a starboard chest of drawers with an integrated vanity divider and storage, and a portside sofa; natural ventilation and light are supplied through opening portholes within the generous port and starboard windows and a skylight fitted with an electric OceanAir blind. The ensuite head provides a shower, a large sink and a toilet, while a safe in the walk in closet, electric roman blinds, a 49 inch LED TV, a Sonos PLAYBAR and a Blu ray player complete the suite. Guests enjoy a bow VIP with a walk around queen bed,

two hanging lockers and an ensuite head with shower, sink and toilet, plus a 32 inch LED TV and Sonos soundbar; the port VIP mirrors this layout with a walk around queen bed with drawers, an escape hatch to the galley, a large hanging closet, an ensuite head and a 32 inch LED TV with Sonos soundbar. The twin guest stateroom is configured with a walk around queen bed with drawers, an escape hatch to the galley, a large hanging closet, an ensuite head and a 32 inch LED TV with Sonos soundbar.

Guest service is further supported by a Miele stacked washer/dryer in the companionway, a linen locker and a dedicated storage spot for a Dyson cordless vacuum. Crew quarters include a dedicated crew galley with a GE microwave, Kenyon cooktop, Vitrifrigo refrigerator and freezer drawers, a GE stacked washer/dryer and plentiful storage lockers. The port crew cabin accommodates two twin berths, a hanging locker and a 32 inch Smart TV with Sonos, while the starboard crew cabin provides a twin bunk, hanging locker and a 32 inch Smart TV with Sonos; a well appointed head with shower, toilet and sink serves the crew and is supported by a Dyson cordless vacuum with its own built in storage location.

CONTACTS

Shestakov Yacht Sales is a brokerage company specializing in the sale and service of yachts worldwide. The company offers services for buying and selling both new and used motor yachts, sailing vessels, and luxury superyachts. They also provide yacht registration, insurance, technical maintenance, crew selection, and charter organization services across the U.S., Canada, Latin America, the Caribbean, and the Bahamas.

The founder and lead broker of the company is Andrey Shestakov, a licensed and certified expert with extensive experience in marine engineering and shipbuilding.

The company has an extensive network of partnerships with major yacht manufacturers worldwide and provides services in multiple languages, including Russian, Ukrainian, Spanish, and English. The office is in Dania Beach, Florida, USA.

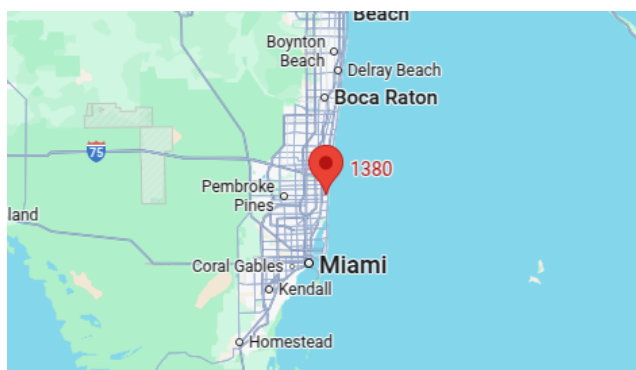
For more information and to view available yachts, you can visit the company's official website: <https://shestakovyachtsales.com>

Contact details

Phone: +1(954)274-4435

Email: andrey@shestakovyachtsales.com

Address



1380 Weeping Willow Way, Hollywood,
Florida 33019