



SHESTAKOV

Yacht Sales

## NO TIME TO DIE - AZIMUT YACHTS



**Builder:** [Azimut Yachts](#)

**LOA:** 80' 0" (24.38 m)

**Year Built:** 2023

**Beam:** 18' 0" (5.56 m)

**Model:** S8

**Max Draft:** 18' 10" (5.75 m)

**Price:** \$2,999,000 USD Subject to change.

**Cruising Speed:** 28 Knots (32.22 MPH)

[See full listing on our website](#)

**Location:** Pompano Beach, United States

**Max Speed:** 34 Knots (39.13 MPH)

If you would like to buy a yacht **NO TIME TO DIE - AZIMUT YACHTS** or would like help answering any questions concerning purchasing, selling, or chartering a yacht, please call **+1(954)274-4435** or click here on <https://shestakovyachtsales.com>

---

# TABLE OF CONTENTS

---

<b>OVERVIEW .....</b>	<b>3</b>
<b>SPECIFICATIONS .....</b>	<b>5</b>
Basic Information .....	5
Dimensions .....	5
Speed, Capacities and Weight .....	5
Accommodations .....	5
Hull and Deck Information .....	6
Engine Information .....	6
<b>GALLERY .....</b>	<b>7</b>
<b>DETAILED DESCRIPTION .....</b>	<b>19</b>
<b>CONTACTS .....</b>	<b>32</b>

## OVERVIEW

---

JUST REDUCED \$200,000 — MOTIVATED SELLER. Impeccably presented and competitively priced, this Azimut S8 exemplifies Italian sporting elegance with a dramatic, aerodynamic silhouette and extensive carbon-fiber construction that gives it a commanding presence on the water. “NO TIME TO DIE” has been cared for by a meticulous original owner who has invested in thoughtful upgrades and maintenance, resulting in a yacht that looks and performs like new.

Underway she is powered by Triple Volvo Penta IPS 1350 diesel engines rated at 1,000 hp each, delivering an exhilarating top speed of 34 knots and a comfortable cruise at 28 knots. The IPS pod propulsion with Active Trim Control, combined with the lightweight carbon-fiber hull, produces a notable 20–30% reduction in fuel consumption and CO2 emissions versus comparable express cruisers. With only 145 hours, all services up to date, and a Volvo engine warranty in place through December 2026, reliability and peace of mind are built in.

Interior accommodations are arranged for true luxury overnighting with four well-appointed staterooms and four elegant heads, anchored by a sumptuous full-beam owner’s suite. A tranquil VIP and additional guest cabins offer private retreats, while substantial crew quarters — including a private captain’s cabin plus a separate two-berth crew room — support extended passages and professional operation.

Designed for entertaining at the highest level, the yacht’s gourmet galley and luminous salon open effortlessly to expansive outdoor living areas: a capacious flybridge/sport-bridge, an inviting foredeck, and a generous aft cockpit.

Systems and comforts have been upgraded to enhance every outing, featuring a Garmin Platinum electronics suite with Garmin AIS 800, Volvo joystick control with Dynamic Positioning System, a Kohler 28 kW generator, and a Seakeeper

18 gyro stabilizer for unmatched comfort underway and at anchor.

Every onboard convenience has been considered: a retractable sunroof bathes the interior in natural light, adjustable-backrest sunbeds and automated Roman blinds tailor the ambiance, and a fully equipped aft-cockpit wet bar with icemaker, refrigerator and BBQ creates the perfect setting for alfresco evenings. Shade sails for both cockpit and bow, a dedicated wine cooler, a 360° camera system, rich teak decking, plus practical amenities such as a dishwasher, washer/dryer and six underwater lights round out the luxury package. The yacht's double garage and beach club with hydraulic swim platform house a Pirelli J39 Jet Tender, Azimut Special Edition, showing just one hour — an impeccable complement to this premier flybridge sport cruiser.

A seamless fusion of high performance, sophisticated comfort and unmistakable Italian styling, "NO TIME TO DIE" is turnkey and ready to cruise. ALL SERVICES ARE UP TO DATE. VOLVO ENGINE WARRANTY TILL DEC 2026. ONLY 145 HOURS. ALL REASONABLE OFFERS WILL BE CONSIDERED — contact us to arrange your private showing.

# SPECIFICATIONS

---

## Basic Information

---

**Model Year:**  
2023

**Country:**  
United States

**Year Built:**  
2023

## Dimensions

---

**LOA:**  
80' 0" (24.38 m)

**Max Draft:**  
18' 10" (5.75 m)

**Beam:**  
18' 0" (5.56 m)

## Speed, Capacities and Weight

---

**Cruise Speed:**  
28 Knots (32.22 MPH)

**Water Capacity:**  
291 Gallons

**Max Speed:**  
34 Knots (39.13 MPH)

**Fuel Capacity:**  
1057 Gallons

## Accommodations

---

**Total Heads:**  
4

## Hull and Deck Information

---

**Hull Material:**

Fiberglass and Plastic Yachts

**Hull Designer:**

N/A

**Deck Material:**

Fiberglass

**Interior Designer:**

N/A

**Hull Configuration:**

N/A

## Engine Information

---

**Engines:**

3

**Engine Type:**

Inboard

**Manufacturer:**

Volvo Penta

**Fuel Type:**

Diesel

# GALLERY





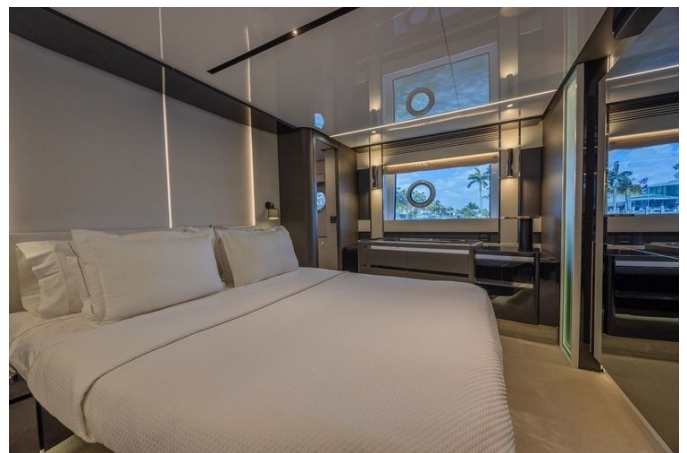




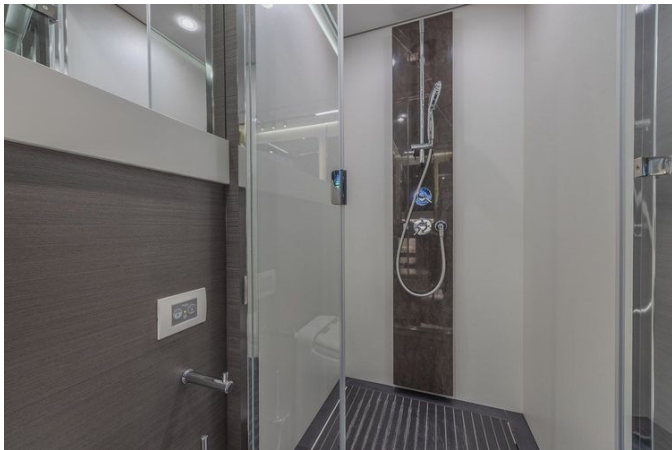
















---

# DETAILED DESCRIPTION

---

## Features & extras

---

Twin helm stations benefit from the Garmin Platinum package with Garmin AIS 800, while the Naviop upgraded package enhances the vessel with precise air-conditioning controls, and onboard comfort is further assured by a SeaKeeper Stabilizer 18 and a 28 kW Kohler generator. Docking and maneuvering are made simple with an aft cockpit docking station, a copilot seat at both helm stations, a double motorized shore power cord reel and prop speed on the propulsion system. Exterior spaces are laid with teak throughout and include aft sunbathing cushions with adjustable backrests, upgraded external standard cushions in Batyline fabric and a cockpit sun shade sail with two removable poles, complemented by a telescopic gangway and an aft shower. Illumination below the waterline is provided by four underwater lights on the sides and two on the transom, while the bow lounge invites relaxation with its own sun shade sail with removable poles, sunbathing cushions with adjustable backrests and a bow table finished with a carbon top. Practical refinements include a painted bow handrail in Island Volcanic Grey, a watertight hand control for the anchor winch, a fresh water connection for bow washing and discreet hidden lights on the bow. The flybridge is appointed with built-in furniture housing a sink, barbecue and icemaker, an automatic bimini, a Batyline fabric sofa on the aft flybridge, a hi-lo table that converts into a sunbed (cushion included), a backrest for the bow flybridge sunbathing cushion, teak on the flybridge deck and bow area and a flybridge hatch, while exterior styling is unified by painted domes, a painted flybridge perimetric profile in Island Volcanic Grey and a painted radar mast and instruments, with focused illumination from spotlights on the aft flybridge. Interior appointments include a designer table in the dinette and salon bar furniture that integrates a

sink, refrigerator and icemaker; the galley is equipped with a dishwasher, a wine cooler located under the galley floor and an organized storage area beneath the galley floor. Comfort and control are enhanced by electric blackout blinds for the glass roof on the main deck, an electric searchlight with additional control, the Luxury Lights packages for both exteriors and interiors, dimmed lighting on the lower deck, domotic lights in the salon and Roman blinds in the cabins (automatic in the master cabin only) as well as automatic Roman blinds in the salon. Additional conveniences comprise a safe in the master cabin, an additional folding bed in the starboard guest cabin, an additional folding bed in the crew cabin, a washer and dryer in the crew cabin (two separate units), and a refrigerator and microwave oven in the crew area (portside cabin), together with a cover for the garage door bearing the logo and dedicated hauling and launching systems for both the jet ski and the tender.

## Flybridge

---

Access to the flybridge is via a climbing ladder of stainless steel and GRP, appointed with teak treads and a side handrail, leading onto a GRP non slip deck underfoot. A Plexiglas screen supported by stainless steel stanchions provides protection without compromising visibility, while forward on the port side a sunbed with removable outdoor cushions creates an inviting area for relaxation. The yacht is steered from the starboard control station, which features a dedicated helm seat and a richly equipped dashboard that includes a VOLVO engine display and Garmin electronic navigation instruments (from serial no. 014). Engine throttles, an adjustable steering wheel and a VHF communications system form the core of the helm, with bow thruster controls delivering precise manoeuvring. Audible alarm controls and trim tab controls (intruder) are incorporated into the engine throttle assembly, and a 12 V socket, chain meter counter and monitoring display complete this highly

capable flybridge command.

## Bow

---

At the forwardmost point, two sunbed areas situated just aft of the mooring station create an inviting place to soak up the sun, each furnished with removable outdoor grade fabric cushions that combine effortless comfort with easy care; immediately behind these reclining pads a C shaped sofa, likewise fitted with removable outdoor cushions, forms an intimate lounge and conceals three discreet lockers beneath for neat stowage. A tailored protective cover shields both the cushions and the sunbed surfaces when not in use, while four stainless steel glass racks—placed beside each sunbed and at the sofa's flanks—secure drinks while underway, and stainless grabrails finished with an upper GRP insert ensure safe movement and a refined tactile feel. Thoughtfully integrated into the foredeck is a robust anchoring and handling system composed of one 50 kg (110.2 lb) galvanized steel anchor riding on a 100 meter (328'1") galvanized steel chain of 14 mm (0.55 in) diameter, operated with precision using two T head cleats, two stainless steel chocks and one 3,500 W winch with open winch controls. A chain locker with drainage provides organised accommodation for the rode and the space to hold four fenders, supported by a chain washing pump and stainless steel anti rubbing protections for the anchor line, while a single bow hatch offers convenient access below.

## Cockpit

---

Meticulously crafted for both leisure and utility, the cockpit features an L-shaped bench arranged around a central table to create an elegant setting for alfresco dining and intimate conversation. Entertaining is effortless thanks to a fully equipped wet bar complete with grill, refrigerator and ice maker,

while teak underfoot and integrated scuppers combine refined style with practical drainage. Guests board from the stern on the starboard side via two stainless steel aft gates that ensure secure access. Shore connections are neatly arranged with two shore socket lockers, a water connection and a shower to port, and a single shore socket locker to starboard. The mooring stations are comprehensively specified with two Thead cleats, two stainless steel chocks, two 1700 W winches and open winch controls, providing assured handling and precise docking in any harbour.

## Platform/garage

---

Hand-applied teak decking on both the bathing platform and the aft platform creates an elegant extension of the yacht's living space, while twin teak staircases—one on each bulwark—provide a refined route down to the sea-level terrace. For added safety, a manual emergency swimming ladder is located to starboard. Access to the garage is via a carbon pivoting door, yielding dimensions of 3270 x 865 mm (128.74 x 34.06 in) when closed and 3270 x 2503 mm (128.74 x 98.54 in) when open, and the opening is rated to carry 720 kg (1,587.3 lb). The garage is equipped for installation of the recommended watercraft, accommodating an AzimutPirelli J39 light tender and a GTX LIMITED 300 jet-ski.

## Wheelhouse

---

Aft, the saloon door opens into a finely appointed wheelhouse where a pantograph door provides seamless access to the port walkaround and a helm seat with storage beneath is positioned for effortless command. The floor is carpeted while the ceiling features patterned panels set against an opaque black background, framed by lacquered mullions and opaque black window carters. Illumination is delivered by LED technology, with ceiling-mounted

recessed LED strips and spotlights, while an engine display keeps vital data clearly visible. To port, a large C-shaped sofa sits against the bulwark accompanied by one coffee table and supported by one container cabinet located forward of the port side sofa. To starboard there is one large pouf, alongside one compartment housing the TV set lift mechanism and one cabinet containing tableware positioned between the pouf and the dining area on the port side. Climate is precisely regulated via an air conditioning control panel, with outlet and inlet grids integrated into the internal furnishing. Natural light pours through two panoramic windows on the bulwarks, dressed with side fabric curtains and a fabric saloon door curtain for privacy and a soft feel.

## Galley

---

Step through the sliding access door into a luminous, highly functional galley where a laminated floor underfoot complements an Avonite Milk White worktop that embraces a double stainless steel sink. Culinary performance is assured by an induction four-hob range, supported by a silicone pot holder and an extractor hood with outwards extraction, while refrigeration is handled by a 194 l (6.85 cu.ft) fridge paired with a 62 l (2.19 cu.ft) freezer and a 40 l (1.41 cu.ft) oven to complete the provision of cold and hot storage. Generous wall cabinets keep provisions neatly stowed, and abundant natural light floods the space through two portlights and a skylight, accentuated by a ceiling patterned with panels within a perimeter frame and refined, efficient LED illumination. Practical luxuries are discreetly integrated throughout, including convenient sockets, an air conditioning system control panel and an air conditioning outlet and inlet grid built into the internal furnishing to ensure effortless climate comfort.

## Lobby and corridor

---

A sumptuous carpet covers the lobby floor and continues up the steps, softening each footfall, while the ladder walls are finished in lacquer for a subtle, refined sheen. The passage aft toward the owner's cabin is lined with elegantly lacquered panels, whereas forward toward the VIP cabin the corridor is wrapped in upholstered wall finishes, the only interruption being a lacquered portal that artfully frames the VIP entrance. A secure handrail runs alongside the stairs to ensure confident movement when underway, and discreet storage is incorporated beneath the ladder on the port side beside the owner's cabin access door to keep the walkway clear. LED lighting throughout provides efficient, welcoming illumination.

## Owner's cabin

---

A central entrance opens into the owner's cabin, where the double bed occupies the exact middle of the yacht and a foldaway base conceals a spacious storage locker beneath. A carefully tailored headboard frames the bed, which is appointed with a high-quality mattress, cushions and coordinating bedspread, while two bedside tables with drawers and a pair of reading lights provide practical elegance. Natural light fills the room through two fixed panoramic windows, each incorporating an operable round portlight, and Venetian blinds ensure complete privacy when required. On the port side a chest of drawers offers organised storage, while to starboard a chaise longue creates a private lounge, accompanied aft by a storage cabinet set into the starboard bulwark and forward by a built-in bookcase. A large mirror mounted opposite the bed amplifies the sense of space above the carpeted sole, and the lacquered, wood-upholstered bulwarks together with a ceiling composed of panel modules framed by a perimeter trim attest to the fine joinery throughout. Illumination is provided by main LED lighting with dimmer control

complemented by LED courtesy lights, and climate comfort is managed from an air conditioning control panel with inlet and outlet grids neatly integrated into the furnishings.

Adjoining the cabin, the owner's dressing room is fitted with wardrobes complete with hanger bars and dedicated LED task lighting, a chest of drawers and a full length mirror, while floors and bulkhead upholstery in a refined wood essence complete this private dressing suite.

## Owner's en-suite head

---

Finished to a meticulous standard, the owner's en-suite head features a Vetro Freddo wash basin recessed beneath an elegant marble top, resting on a cabinet base designed for generous storage. An adjoining cabinet offers further practicality with two open compartments and additional stowage, while a mirror set within a central wall unit amplifies light and functionality. Natural illumination pours in through the portlight and is tempered by a refined Venetian blind, with an overhead wall unit providing extra organization. A TECMA toilet confirms the premium specification, and the warm, cohesive grain of wood essence unifies the furniture, flooring and bulkhead upholstery. Above, a ceiling composed of patterned panels framed at the perimeter imparts architectural refinement, and LED lighting is thoughtfully positioned alongside a convenient socket, a full complement of head accessories, an A/C outlet grid and an efficient air extractor to maintain a fresh, comfortable ambience.

The generously proportioned shower enclosure sustains the same level of refinement, entered through a glass and aluminium door whose handle discreetly incorporates a towel holder. Its walls are protected with durable laminate, a removable grating simplifies cleaning, and a marble shower column with thermostatic mixer regulates temperature for both a handheld and a ceiling-mounted shower head. Watertight spotlights ensure crisp

illumination, while an A/C suction grating completes the climate and ventilation system for the space.

## Starboard guest cabin

---

A serene retreat crafted for refined comfort, the starboard guest cabin houses two fixed single berths appointed with sumptuous mattresses, soft pillows and tailored bedspreads. A bedside table with a drawer keeps personal items within easy reach and a pair of reading lights offers precise, comfortable illumination for evening reading. Generous storage is provided by a wardrobe equipped with a hanger bar and multiple shelves. Daylight fills the space through a fixed panoramic window, and a round, openable portlight set within the same frame allows for refreshing ventilation, while a Venetian blind provides immediate privacy. Underfoot, wall-to-wall carpeting cushions each step, complemented by lacquered, wood-upholstered bulwarks that introduce a warm, elegant finish. The ceiling is composed of a patterned arrangement of panels framed by a perimeter moulding, with integrated LED lighting throughout for a refined ambience. Climate is controlled with precision via an air-conditioning system control panel, the outlet and inlet grids discreetly integrated into the interior joinery for a seamless look. For added convenience, a hinged door at the aft of the cabin gives direct access to the head.

## Starboard guest head

---

Thoughtfully sited for convenience, the starboard guest head is entered both from the starboard guest cabin and from the central corridor. A Vetro Freddo washbasin is recessed beneath the marble surface and sits atop a bespoke washbasin cabinet base that provides discreet, elegant storage. A mirror with an integrated central wall unit enhances both functionality and visual depth, while a TECMA toilet guarantees dependable, refined performance. Natural

light is admitted through a portlight equipped with a Venetian blind to allow precise control of privacy. The furniture is finished in a warm wood essence, with coordinated flooring and bulkhead upholstery in matching tones to create a harmonious atmosphere. Overhead, the ceiling presents a sophisticated pattern of panels within a perimeter frame, and the space is warmly illuminated by energy-efficient LED lighting.

## Port guest cabin

---

The port guest cabin exudes calm, appointed with two fixed single beds dressed in mattresses, pillows and bedspreads, each framed by an upholstered headboard. A single bedside table with a drawer sits between the beds and is paired with two reading lights for evening comfort. Storage is provided by one wardrobe equipped with a hanger bar and shelving. Natural light fills the cabin through a fixed panoramic window that includes one round, openable portlight to welcome sea breezes, while a Venetian blind guarantees privacy. A carpeted floor softens every step, and lacquered wood-upholstered bulwarks together with a paneled ceiling featuring a perimeter frame deliver a refined finish. Illumination is by LED lighting, and climate is managed via an air conditioning system with its control panel and inlet and outlet grids integrated into the internal furnishing. Practicality and discretion are ensured by direct access to the head through a hinged door on the forward side of the cabin.

## Port guest head

---

Accessible directly from the port guest cabin, this headroom is composed with an understated luxury: a Vetro Freddo washbasin sits recessed beneath a marble countertop and is mounted on a purpose-built washbasin cabinet base, while an adjacent companion cabinet offers two open compartments for practical storage and a central wall unit with integrated mirror provides

discreet utility. Comfort and privacy are balanced by a TECMA toilet and a portlight fitted with a Venetian blind, and the entire space is clothed in a refined wood essence that extends across the furniture, the flooring and the bulkhead upholstery. The ceiling is detailed with a patterned arrangement of panels set within a perimeter frame, and illumination is delivered by LED technology alongside a full complement of head accessories; air comfort and circulation are maintained via an A/C outlet grid and an air extractor for effortless everyday use. The dedicated shower enclosure is appointed with a glass and aluminum access door that incorporates a towel holder in its handle, laminate-clad walls, a removable grating, a thermostatic mixer and a handheld shower head, all lit by watertight spotlights and supported by an A/C suction grating to ensure optimal ventilation.

## VIP cabin

---

At the heart of the yacht, the VIP cabin is anchored by a generous double bed with a foldaway base that reveals a storage locker beneath, dressed with mattress, pillows and bedspread and finished by an upholstered headboard for immediate comfort and refined detail. Each side of the bed is accompanied by a bedside table—deliberately designed without a drawer below—and two adjustable reading lights provide a soft, intimate glow for evening relaxation. Storage is carefully integrated: at the foot of the berth there is a wardrobe to port with hanger bars and shelves and a matching wardrobe to starboard with hanger bars and shelves, while wall units on either side of the cabin are mirrored by open compartments beneath them to keep essentials close at hand. A full-height mirror opposite the bed enhances the sense of volume and light, which pours in through two fixed windows; each window incorporates an openable round portlight and is dressed with Venetian blinds for privacy and light control. Underfoot, carpeted flooring cushions every step and wood-upholstered bulwarks lend warmth and sophisticated finish. The

overhead is composed of patterned panels framed by a perimeter molding and includes an openable safety hatch, while illumination is provided by efficient LED main lights and LED courtesy lighting to create atmospheric layers. Climate is managed easily via the air conditioning system control panel, with the outlet and inlet grid discreetly integrated into the internal furnishings. Practical convenience is assured by direct access to the head through a hinged door located aft in the starboard side of the cabin.

## VIP head

---

Configured for seclusion and understated elegance, the VIP head is accessible directly and privately from the VIP cabin and presents itself as a carefully appointed sanctuary. A washbasin nested beneath a marble countertop forms the focal point of the vanity, which rests on a cabinet base fitted with paneled doors and internal shelving; a centrally positioned mirror is integrated into a wall unit flanked by two open compartments for convenient storage. A TECMA toilet is discreetly sited within a scheme of refined wood-essence finishes that continue through the joinery, floor surfaces and bulkhead upholstery, while the ceiling is articulated with a pattern of panels framed around the perimeter to lend architectural definition. Daylight enters through a portlight fitted with a Venetian blind and the mood is refined by LED lighting technology; climate comfort is provided by an A/C outlet and an air extractor, and a selection of premium head accessories completes the appointment.

The dedicated shower enclosure upholds the same attention to detail, reached via a glass door and clad in durable, elegant laminate on the walls. A removable grating allows for straightforward upkeep, and a thermostatic mixer with a handheld shower head offers precise temperature control and personal comfort. Watertight spotlights bring focused illumination to the showering area, while an A/C suction grating ensures continuous airflow to keep the space fresh and inviting.

## Captain's cabin

---

Entered via the door along the crew-area corridor on the port side, the captain's cabin is a refined private haven centered around a single bed with under-bed storage, furnished with a mattress, pillows and a coordinated bedspread. Practical luxury is evident in the provision of a single reading light and a single wardrobe equipped with a hanger bar and shelving, while a bespoke wall unit sits above the berth for added convenience. The cabin's laminated flooring combines resilience with a polished finish, and a portlight fitted with a Venetian blind offers adjustable daylight and privacy. Contemporary LED lighting creates an elegant atmosphere, and climate control is handled through an integrated air-conditioning system control panel with the outlet and inlet grid neatly built into the internal joinery for discreet, efficient ventilation.

## Crew cabin

---

A door at the starboard end of the crew-area corridor opens into a cabin conceived for both refined comfort and efficient use of space. The accommodation includes a full-size single berth with storage beneath, finished with a mattress, pillows and a coordinated bedspread, while a single reading light works in concert with subtle ambient LED lighting. Thoughtful stowage is provided by one wardrobe fitted with a hanger bar and shelving, accompanied by a wall unit to keep essentials orderly. The laminated floor delivers a clean, hard-wearing surface, and daylight filters through a portlight that can be shaded by a Venetian blind. Practicality is further assured by a power socket and an integrated air-conditioning control panel, with the air-conditioning outlet grid incorporated into the interior joinery.

## Crew laundry and head

---

Arranged for both practicality and comfort, the crew and laundry quarters position the commander's cabin to port, locate the crew head alongside the service compartment housing the washer/dryer amidships, and place the crew cabin to starboard. The crew head, entered via a door set at the midpoint of the crew-area corridor, is fitted with a washbasin and a vanity base featuring paneling and shelving, together with a wall unit finished with a panel and an integrated mirror. A TECMA toilet is complemented by wood-essence furnishings laid over a laminated floor, while LED lighting, an electrical socket and a full complement of head accessories ensure everyday convenience. Air extraction is provided by an aspirator discharging externally, climate comfort is delivered through an air-conditioning outlet grid, and the shower enclosure is appointed with a curtain, a removable grating and a handheld shower head with a flexible hose.

## Disclaimer

---

The particulars of this vessel are provided by the company in good faith; however, no representation or warranty is given regarding the accuracy of the information or the condition of the vessel. Potential purchasers are strongly advised to instruct their own agents or suitably qualified surveyors to verify any information they consider material. This yacht is offered subject to prior sale, alteration of price, or withdrawal from the market without notice.

# CONTACTS

---

Shestakov Yacht Sales is a brokerage company specializing in the sale and service of yachts worldwide. The company offers services for buying and selling both new and used motor yachts, sailing vessels, and luxury superyachts. They also provide yacht registration, insurance, technical maintenance, crew selection, and charter organization services across the U.S., Canada, Latin America, the Caribbean, and the Bahamas.

The founder and lead broker of the company is Andrey Shestakov, a licensed and certified expert with extensive experience in marine engineering and shipbuilding.

The company has an extensive network of partnerships with major yacht manufacturers worldwide and provides services in multiple languages, including Russian, Ukrainian, Spanish, and English. The office is in Dania Beach, Florida, USA.

For more information and to view available yachts, you can visit the company's official website: <https://shestakovyachtsales.com>

## Contact details

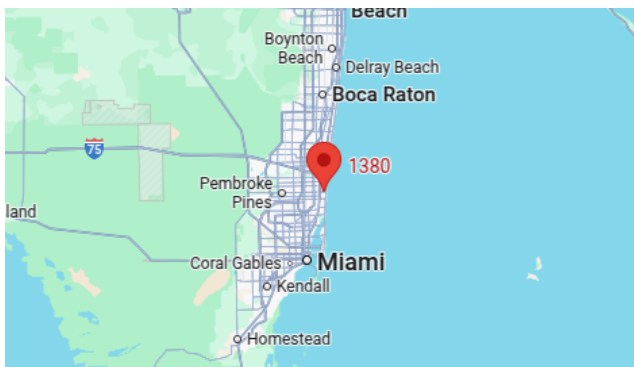
---

**Phone:** +1(954)274-4435

**Email:** [andrey@shestakovyachtsales.com](mailto:andrey@shestakovyachtsales.com)

## Address

---



1380 Weeping Willow Way, Hollywood,  
Florida 33019