



EQUINOX X - CHEOY LEE



Builder: [Cheoy Lee](#)

LOA: 81' 0" (24.69 m)

Year Built: 2004

Beam: 21' 0" (6.43 m)

Model: 81 Sport Yacht

Max Draft: 17' 9" (5.42 m)

Price: \$775,000 USD Subject to change.

Cruising Speed: 17 Knots (19.56 MPH)

[See full listing on our website](#)

Location: Fort Lauderdale, United States

Max Speed: 21 Knots (24.17 MPH)

If you would like to buy a yacht **EQUINOX X - CHEOY LEE** or would like help answering any questions concerning purchasing, selling, or chartering a yacht, please call **+1(954)274-4435** or click here on <https://shestakovyachtsales.com>

TABLE OF CONTENTS

OVERVIEW 3

SPECIFICATIONS 5

 Basic Information 5

 Dimensions 5

 Speed, Capacities and Weight 6

 Accommodations 6

 Hull and Deck Information 6

 Engine Information 7

GALLERY 8

DETAILED DESCRIPTION 15

CONTACTS 21

OVERVIEW

Meticulously cared for, the 2004 Cheoy Lee 81' Sport Yacht EQUINOX X reveals an exceptionally generous and elegant arrangement, accommodating up to 8 guests across four lavish ensuite staterooms, with additional sleeping quarters for 2 crew. Her broad 21'+ beam and a succession of alfresco and climate-controlled lounges create an inviting environment for both spirited days aboard and languid evenings at anchor, making this luxury motor yacht equally at home as a sport yacht for high energy cruising or a refined platform for entertaining family and friends.

Underway, EQUINOX X delivers assured, efficient passage thanks to twin Caterpillar 3412E diesel engines producing 1,400 hp each, a sea kindly hull form, fin stabilizers, and a wide stance that combine for composed, confident handling. These engineering attributes, together with her comfortable accommodations, make her ideally suited to private ownership or operation as a charter yacht, pairing graceful lines with reliable performance for memorable voyages.

Maintained to an exceptional standard by a conscientious full time crew and owner, the yacht is offered with a thoughtfully equipped toy locker: a 14' Walker Bay Venture tender powered by a 70 hp outboard, a complement of assorted inflatables, and an extensive spares inventory valued at over \$40,000. The seller is motivated, presenting a compelling opportunity to acquire a turnkey vessel that has benefited from steady investment and attention.

Highlights:

Over \$80,000 invested since July 2024

New Whisper Wall panels and headliners installed

Fresh wallcoverings in master and twin baths, plus the day head

Galley sole renewed

Engine room and exterior professionally detailed

Four staterooms plus crew accommodations

6'8" headroom throughout

Extensive refits completed in 2022 and 2023

Walkaround side decks and transom repainted (2023)

Hull resprayed below the rub rail (2018)

Starlink satellite internet (2022)

Full LED lighting conversion (2022)

Bottom paint and zincs (2023)

Over \$40,000 in spare parts included

Water toys included in the sale

EQUINOX X distinguishes herself as a polished luxury motor yacht—nimble as a sport yacht, comfortably arranged in a flybridge style cruising format, and proven in charter service—designed for those who value refinement, dependable performance, and effortless entertaining.

SPECIFICATIONS

Basic Information

Category:
Motor yachts

Year Built:
2004

Sub category:
Motor Yacht

Country:
United States

Model Year:
2004

Dimensions

LOA:
81' 0" (24.69 m)

Max Draft:
17' 9" (5.42 m)

Beam:
21' 0" (6.43 m)

Speed, Capacities and Weight

Cruise Speed:

17 Knots (19.56 MPH)

Water Capacity:

500 Gallons

Max Speed:

21 Knots (24.17 MPH)

Fuel Capacity:

2400 Gallons

Gross Tonnage:

179 Pounds

Accommodations

Sleeps:

6

Crew Cabin:

1

Total Heads:

5

Crew Berths:

1

Hull and Deck Information

Hull Material:

Fiberglass and Plastic Yachts

Hull Designer:

Tom Fexas

Deck Material:

Composite

Interior Designer:

N/A

Hull Configuration:

N/A

Engine Information

Engines:

2

Engine Type:

Inboard

Manufacturer:

Caterpillar

Fuel Type:

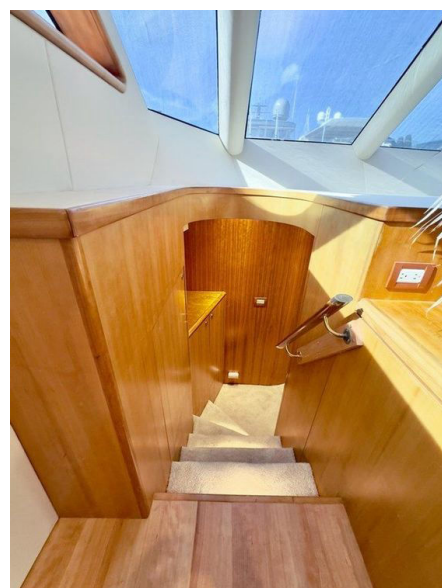
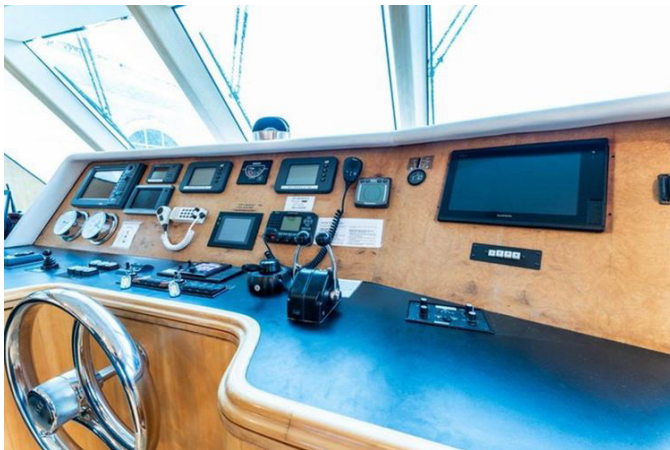
Diesel

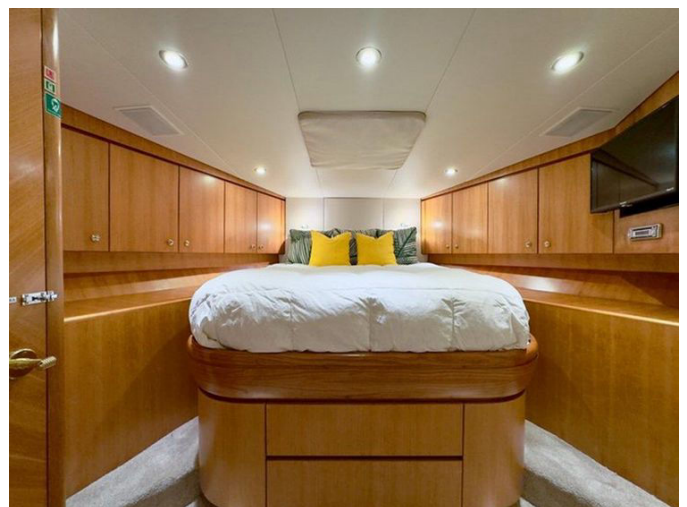
GALLERY















DETAILED DESCRIPTION

Notable upgrades

In 2024 the yacht underwent a thoughtful, comprehensive refresh that elevates comfort, acoustics, and presentation throughout every living space. In July 2024 Whisper Walls and ceilings were renewed across the interior, including new overheads in the salon and galley, refreshed overheads and wall panels in the forward starboard crew bunk, new overheads and walls in the forward guest stateroom, refreshed wall panels in the master stateroom, and new overheads and wall panels in both the VIP and the twin staterooms, delivering a cohesive and modern finish. In September 2024 wallpaper was replaced in the master stateroom bath, the twin stateroom bath, and the day head, the galley floor was replaced, and the engine room and exterior received a full detail to professional standards. In October 2024 all carpets were steam cleaned and the interior received a deep clean and detail, leaving every space crisp, contemporary, and impeccably maintained for immediate enjoyment and outstanding presentation to guests and inspectors alike.

Overview

With a beam just over twenty-one feet the yacht is designed to maximize outdoor enjoyment and the ease of movement, offering fully walk-around decks, a covered aft deck, generous bow sun pads, a bridge deck with dedicated toy storage, and an enclosed sky lounge for climate-controlled cruising. Vertical movement between levels is intuitive, with exterior stairs connecting the aft deck to the bridge deck and a circular interior stairwell linking all three decks with graceful flow. Below deck four beautifully appointed staterooms each feature ensuite heads and are complemented by a dedicated crew cabin with bunks for two crew, ensuring professional operations remain

private. The principal guest flow centers on the salon's circular stairs that descend to a welcoming lower-deck foyer serving the master cabin, the VIP cabin, and the twin cabin. Forward of the country galley, portside stairs lead to an additional guest cabin and to the starboard crew cabin, and a laundry cabinet houses a stacked Miele washer and dryer installed in 2019. The salon opens from the aft deck through a stainless sliding door and draws abundant natural light through large windows shaded by Duet blinds; a portside couch with coffee table faces an entertainment center with a flat-screen TV while to starboard a Galileo Maestro II Digital Grand Piano sets a tone of refined evenings. A wet bar with bar fridge and two bar stools completes the social heart of the main deck, and just forward on the port side the dining area presents a round wooden table with six padded chairs, flanked by matching sideboards and a handsome wood buffet with black granite top and ample storage. The day head forward of the bar to starboard features a Corian countertop and sink, an electric flush head, marble-tiled flooring and wallpapered bulkheads beneath a mirrored overhead. The country-style galley invites relaxed gatherings with an L-shaped dinette banquette and black Corian-topped dining table, a built-in portside desk/workstation, pantograph doors to both side decks, and wrap-around windows that flood the space with light over Amtico cushioned wood veneer flooring. The U-shaped galley to port is fitted with a black Corian countertop, a double Franke stainless steel sink, a Whirlpool side-by-side refrigerator/freezer, a Frigidaire electric stove with double oven, a Frigidaire microwave oven, and a Miele dishwasher from 2020. Above, the enclosed skylounge/bridge is fully climate-controlled and accessed either via the circular stairwell from the main salon or directly from the bridge deck aft, offering a full helm station with a Stidd helm chair, an aft L-shaped sofa with table, starboard storage cabinetry with a bar fridge, and a padded top-loading freezer to port. Three adjustable built-in loungers on the foredeck invite sunlit relaxation while the windlass and anchor gear are concealed beneath a large hatch for a clean, sculpted look. Aft, the covered deck provides

built-in seating and two chairs around a dining table for up to eight, wraparound screen shades, starboard access to the integral swim platform, two large storage lockers with electro-hydraulic doors, a watertight transom door to the engine room, and docking remote control stations available both on the outside bridge and the aft deck.

Accommodation

The full-beam master stateroom is a serene amidships retreat just aft of the lower foyer, centered on a king-size bed with two nightstands, a sofa, and a dedicated ladies' vanity. Storage is generous and practical, anchored by a cedar-lined walk-in closet to port that incorporates a lockable owner's closet ideal for charter operations. The décor flows in a neutral palette with sliding Soji window shades, fitted carpets, and upholstered wall paneling for a soft, refined ambiance. The ensuite master bath is appointed with a shower stall, a counter with sink and faucets, a wooden top seat at the entrance, and an electric flush head, finished with marble-tiled flooring, a wallpapered bulkhead, and a mirrored overhead. Forward to port of the foyer the VIP stateroom presents a large island queen-size berth, a nightstand, a cedar-lined closet, a vanity, and wooden-frame sliding window blinds over a carpeted sole with wood veneer accents and upholstered wall paneling; its ensuite VIP bath forward features a Corian-topped counter with basin and tap, a shower stall, and an electric flush head with off-white tile flooring and wallpapered bulkheads. To starboard forward of the foyer the twin guest stateroom offers twin berths along the inboard and outboard bulkheads, a cedar-lined closet, wood-frame sliding window shades, beige carpet and upholstered wall paneling, with an insert provided to convert the twin berths into a large bed when desired; the adjoining twin guest bath forward includes a counter with face basin and tap, a shower stall, and an electric flush head over ceramic tile flooring with a wallpapered bulkhead. Furthest forward, accessed from the

Country Kitchen Galley to port, the forward guest stateroom is arranged with a double bed with storage beneath, a nightstand, vanity, cedar-lined closet, and sliding Soji window shades, finished in beige carpeting with upholstered wall paneling, and its forward guest bath complements the cabin with a Corian vanity top and sink, shower stall, and electric flush head over tiled flooring with a wallpapered bulkhead. For the crew, the starboard forward cabin provides two single berths on the outboard bulkhead, a cedar-lined closet, a desk with shelves, a carpeted sole, upholstered wall paneling, and an ensuite head with a stall shower, ensuring comfort and privacy for professional operations.

Main machinery

Power is provided by twin Caterpillar 3412E diesel engines rated at 1,400 hp each, showing approximately 7,380 hours on both port and starboard, delivering strong, well-proven propulsion. Power is transmitted through stainless-steel propeller shafts measuring 3 1/2 inches in diameter to two five-blade bronze propellers, while ZF transmissions were rebuilt at 5,000 hours to support long-term reliability. Control is precise via ZF and Mathers electronic throttle controls and steering is actuated through a Hynautic hydraulic steering system for steady, responsive handling. Fuel polishing and protection are robust, with triple Racor fuel filters/water separators serving the main engines and single units on the generators. Ship's electrical power is supported by two Northern Lights 33 kW generators, recording approximately 15,753 hours on the port unit and 14,0907 hours on the starboard, each equipped with PTOs and a crossover for redundancy and operational flexibility. For sea-kindly performance and safety underway the yacht is fitted with six bilge pumps, a Wesmar bow thruster, Wesmar under-way fin stabilizers, and sacrificial zincs on shafts, rudders, and stern. Climate systems are engineered around closed reservoir cooling with heat exchangers and dual chillers feeding individual air handlers in each space, ensuring dependable, zoned air

conditioning throughout.

Navigation and communication equipment

Navigation and connectivity are robust, anchored by Marine Starlink WiFi and a capable electronics suite that includes one Garmin 7612, one Garmin 740S, and one Furuno NavNet plotter, with a Simrad Autopilot 20 guided by a Simrad R135 rudder angle indicator for precise course-keeping. Long-range awareness is provided by a Furuno radar with a seventy-two-mile range and depth is monitored via a Furuno RD 30 sounder. Communications include an Icom IC M506 VHF radio, a Standard Horizon hailer, a Ritchie Power Damper compass, and an Iridium satellite phone, while wind data is supplied by a Raymarine MN100 2 gauge. Entertainment throughout the yacht is seamless, comprising six TCL Roku televisions, three Sonos amplifiers, a Yamaha Digital DSP backbone, and overhead speakers installed throughout passenger spaces for an immersive audio-visual experience.

Safety & monitoring equipment

Fire safety on board is comprehensive, with eleven portable extinguishers distributed across cabins, galley, bar, and engine room, fire alarms integrated into the ship's monitoring system, and a Halon fixed fire-extinguishing system in the engine room with both automatic and manual activation. Vital engine and systems alerts are clearly conveyed with visual and audible warnings for low oil pressure and coolant over heat. Life-saving gear includes three eight-person life rafts, an ACR Global Fix EPIRB, and a well-outfitted first-aid kit complete with an oxygen kit and AED. Additional safeguards extend to navigation lights, a searchlight mounted on the bridge deck, and CCTV coverage in the engine room and aft deck, providing continuous oversight where it matters most.

Deck equipment

Handling and stowage are thoughtfully addressed with a 1200 lb EZ Crane fitted on the upper deck and rebuilt in 2022 to streamline tender and toy operations. Mooring hardware is substantial, comprising eight 21* stainless steel cleats, six 8-inch stainless steel fairleads, and four stainless steel chocks. Ground tackle includes a Bruce type 80 kg anchor with a 1/2-inch galvanized link chain measuring 250*, and a Maxwell 350 windlass with deck controls installed new in 2021. Practical storage is provided by two lockers port and starboard off the swim platform and a spare Danforth Fortress anchor at the stern, keeping essential gear secure and readily accessible.

Disclaimer

The Company offers the details of this vessel in good faith but cannot guarantee or warrant the accuracy of this information nor warrant the condition of the vessel. A buyer should instruct his agents, or his surveyors, to investigate such details as the buyer desires validated. This vessel is offered subject to prior sale, price change, or withdrawal without notice.

CONTACTS

Shestakov Yacht Sales is a brokerage company specializing in the sale and service of yachts worldwide. The company offers services for buying and selling both new and used motor yachts, sailing vessels, and luxury superyachts. They also provide yacht registration, insurance, technical maintenance, crew selection, and charter organization services across the U.S., Canada, Latin America, the Caribbean, and the Bahamas.

The founder and lead broker of the company is Andrey Shestakov, a licensed and certified expert with extensive experience in marine engineering and shipbuilding.

The company has an extensive network of partnerships with major yacht manufacturers worldwide and provides services in multiple languages, including Russian, Ukrainian, Spanish, and English. The office is in Dania Beach, Florida, USA.

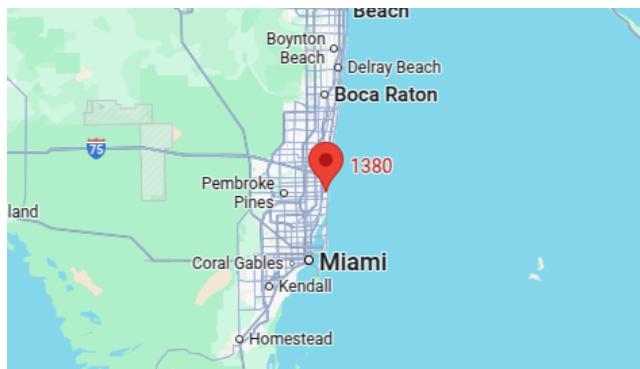
For more information and to view available yachts, you can visit the company's official website: <https://shestakovyachtsales.com>

Contact details

Phone: +1(954)274-4435

Email: andrey@shestakovyachtsales.com

Address



1380 Weeping Willow Way, Hollywood,
Florida 33019