

DOUBLE OR NOTHING - PERSHING



Builder: [PERSHING](#)

LOA: 82' 0" (24.99 m)

Year Built: 2017

Beam: 18' 0" (5.51 m)

Model: 82 VHP

Max Draft: 15' 0" (4.58 m)

Price: \$2,875,000 USD Subject to change.

Cruising Speed: 40 Knots (46.03 MPH)

[See full listing on our website](#)

Location: Fort Lauderdale, United States

Max Speed: 51 Knots (58.69 MPH)

TABLE OF CONTENTS

OVERVIEW	3
SPECIFICATIONS	4
Basic Information	4
Dimensions	4
Speed, Capacities and Weight	4
Accommodations	4
Hull and Deck Information	5
Engine Information	5
GALLERY	6
DETAILED DESCRIPTION	14
CONTACTS	32

OVERVIEW

DOUBLE OR NOTHING is a meticulously maintained Pershing 82 VHP performance motor yacht, driven by twin MTU 2638 hp powerplants that propel her to an exhilarating top speed of 50 knots. In 2024/25 she received a careful exterior and interior renewal: flybridge lounge cushions and most exterior covers were replaced, interior soles were refinished, she was hauled for antifouling with all zincs renewed, and the TopSystem drives were serviced and repainted. The engines were serviced in January 2024 and have accumulated only a handful of hours since that work. A custom 8X bar was fitted in the salon in 2021. The yacht wears a bespoke paint scheme, the hull rendered in shimmering pearl white while the superstructure is finished in a striking charcoal grey; in 2025 the hull sides were polished and sealed with touch-up paint applied as required, and the superstructure received targeted polishing and sealing the same year. Having lived in fresh water from 2020–2022 and subjected to very light use until she was purchased by the current owner just over two years ago, she retains exceptionally low original engine hours. A full-time captain remains aboard, overseeing monthly maintenance and completing a few proactive projects to present this high-performance sport yacht in excellent, turnkey condition for her next owner.

SPECIFICATIONS

Basic Information

Model Year:
2017

Country:
United States

Year Built:
2017

Dimensions

LOA:
82' 0" (24.99 m)

Max Draft:
15' 0" (4.58 m)

Beam:
18' 0" (5.51 m)

Speed, Capacities and Weight

Cruise Speed:
40 Knots (46.03 MPH)

Water Capacity:
343 Gallons

Max Speed:
51 Knots (58.69 MPH)

Fuel Capacity:
1572 Gallons

Accommodations

Total Heads:
3

Crew Cabin:
2

Hull and Deck Information

Hull Material:

Fiberglass and Plastic Yachts

Hull Designer:

N/A

Deck Material:

Fiberglass

Interior Designer:

N/A

Hull Configuration:

N/A

Engine Information

Engines:

2

Engine Type:

Inboard

Manufacturer:

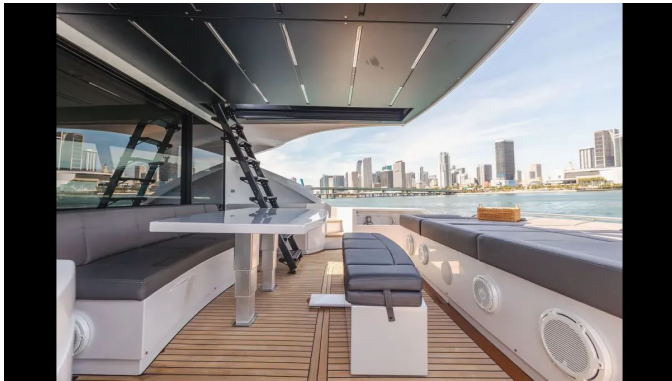
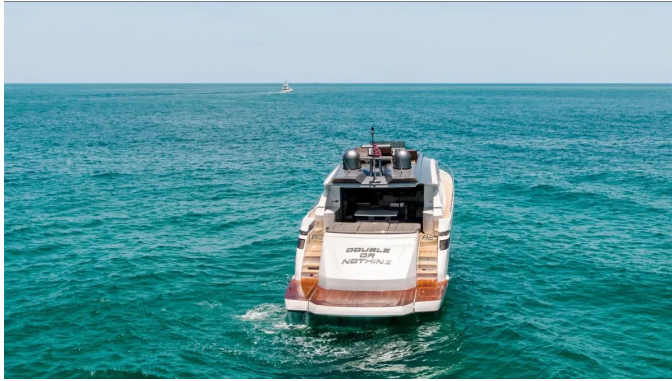
MTU

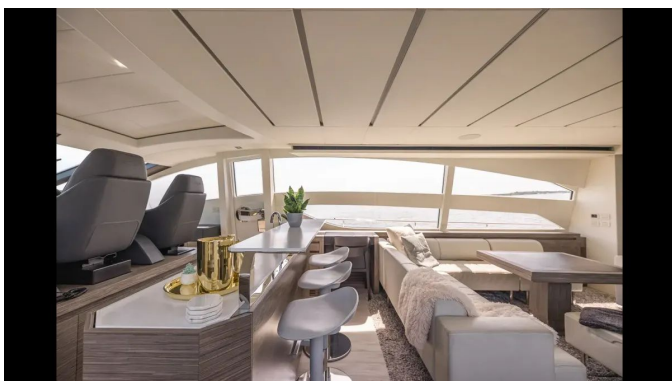
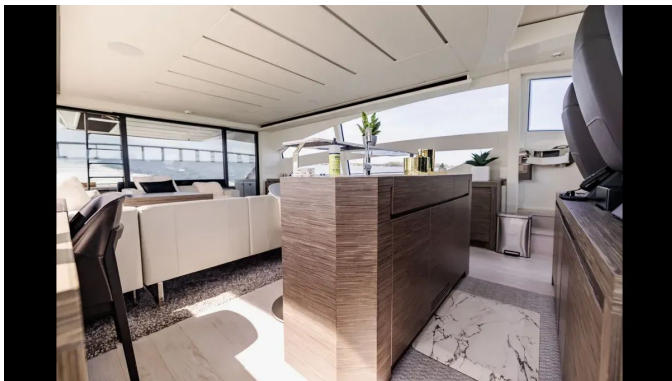
Fuel Type:

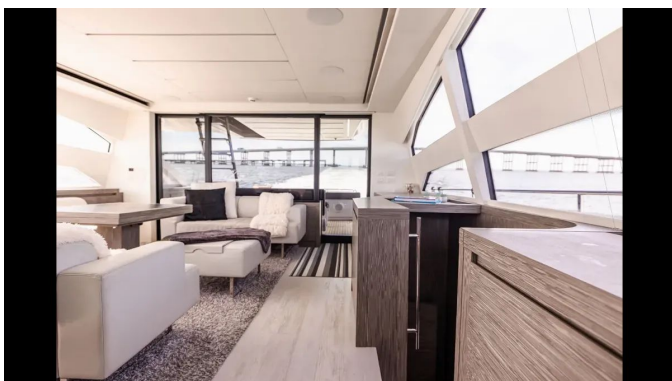
Diesel

GALLERY

















DETAILED DESCRIPTION

Broker comments & walkthrough

Approaching DOUBLE OR NOTHING, the eye is immediately arrested by a bespoke livery: a luminous pearl-white hull and matching superstructure that catch the light, offset by a metallic charcoal hardtop and flybridge which lend a crisp, modern silhouette. Guests embark from the port-side passerelle onto a generous swim platform equipped with a telescoping boarding ladder and a centerline garage that houses the Williams tender, with additional storage reserved for watersports equipment and provisioning. The aft deck affords impressive headroom and centers on a dining table flanked by both aft- and forward-facing seating, while expansive sunpads aft invite languid relaxation—picture yourself sinking into them as the yacht accelerates toward 40 knots. An aft window that retracts fully and doors that tuck away dissolve the boundary between inside and out to create a single sweeping social environment perfect for entertaining, complemented by an alfresco galley area with a grill, sink, refrigerator, and ice maker.

Walkaround side decks lead forward to a bow lounge where another generous sunpad sits alongside a U-shaped settee and a convertible high-low table that lowers into an additional expanse of sunbathing surface or raises to form an elevated cocktail spot, widely regarded as the ideal perch for sunset drinks. From the aft deck, a short ascent delivers you to the upper flybridge, which features a secondary helm station, three helm chairs including a centerline chair, and a lounge area that comfortably accommodates three adults—a thrilling, private vantage point that also serves as the finest seat underway in performance mode. Safety railings run the length of the side decks and flybridge, and closing doors to the aft deck provide added security while cruising.

Inside, the main salon is distinguished by a custom centerline bar inspired by the 8X lineage. A palette of neutral earth tones, leather seating, soft throws and carpets, and white-washed oak flooring create a calm, refined atmosphere. With the aft doors and windows lowered and the skylight open, the salon becomes an inviting al fresco living space with excellent ventilation at speed. Forward of the bar are three helm chairs and the primary helm, with starboard access to the guest accommodations and side doors on both port and starboard offering direct exterior egress—practical for the captain during docking and for guests moving forward to the bow. Opposite the salon’s U-shaped settee, a pop-up television and entertainment system sit adjacent to a private staircase that descends to the galley and crew quarters. The galley is notably roomy, and the crew area comprises two separate cabins sharing a bathroom: one cabin sleeps two crew members, the second accommodates one, and a full-size washer and dryer are provided. Direct access to the engine room is located aft opposite the crew bathroom through a watertight door, and mounted centerline aft between the main engines is an A/Sea shore power converter, enabling DOUBLE OR NOTHING to connect to shore power virtually anywhere in the world for seamless operation across the US, Caribbean, Mediterranean and beyond.

Continuing forward from the main salon and helm, the lower lounge functions as a cinema room anchored by a large wall-mounted television. Aft of this space the full-beam master suite features an offset king that maximizes the layout, generous headroom, a full ensuite and ample drawer and hanging locker storage, with large port and starboard windows bathing the cabin in natural light. The forward VIP mirrors the master’s volume with generous headroom, its own ensuite, and abundant daylight from side windows and a skylight. Opposite the cinema, the third cabin provides flexible accommodation for three guests in two twin berths plus a fold-away Pullman—an excellent arrangement for children with the TV room just outside. The bathroom serving this cabin doubles as the dayhead and offers dual access from the

companionway as well as direct entry from the cabin for nighttime privacy. DOUBLE OR NOTHING is a meticulously maintained Pershing 82 VHP, driven by MTU 16V 2000 M96 engines and achieving a top speed of 50 knots. Recent works in 2024/25 include replacement of the flybridge lounge cushions and most exterior covers, refinishing of interior floors, hauling for new antifouling, replacement of all zincs, and servicing and repainting of the Top System drives. The engines were serviced in January 2024 and have accumulated only minimal hours since. The custom 8X-style bar was fitted in 2021 alongside other interior enhancements. The yacht's bespoke paint scheme pairs a pearl-white hull with a contrasting charcoal-gray superstructure; in 2025 the hull sides were polished and sealed with touch-up paint where necessary and the superstructure received spot polishing and sealing. Notably, she resided in freshwater from 2020–2022 prior to being acquired by the current owner just over two years ago. With very low original engine hours, private use since delivery, and a full-time captain overseeing monthly maintenance and selected upgrade projects, DOUBLE OR NOTHING is presented in excellent condition for her next owner.

2026 shipyard period

Throughout the 2026 shipyard period the yacht received a meticulous program of mechanical attention and cosmetic enhancement, marrying performance with a renewed sense of refinement. The HVAC system was comprehensively serviced, with all engine room compressors inspected, outlet and intake hoses replaced and the circulation system optimized to improve overall efficiency. On deck, every inch of the exterior caulking on the main deck was removed and renewed and the teak decks were carefully treated with a two stage cleaning process from bow to stern. The upper helm's plexiglass windscreen was replaced with a new unit and the bow table was refinished to a deep, lustrous finish. In the engine room a full detailing and fresh paintwork were completed,

bilges were pressure washed and all surfaces — including the diamond plated flooring — were thoroughly cleaned; the jack shaft and other engine room metals were cleaned and repainted, and the thru hulls were addressed with the replacement of all major ball valves in the engine room. Water outlets on both the port and starboard sides were removed and replaced with new units matched to the intake size. For added protection and a polished appearance topside, existing window covers were renewed and two additional covers were fitted, bringing the total to eight surrounding the wheelhouse and main salon. Inside, the interior carpets and upholstery were professionally cleaned and shampooed, and the interior blinds were upgraded throughout with new guide wires and anchors.

Factory options

Configured to elevate both presence and performance, this yacht is specified with the Ambiance mobile package and finished in White Metallic on hull and superstructure, while carbon fiber air intakes accent the hull sides. On the main deck the salon has been refined with bespoke furniture changes, a superior upper salon table featuring a wood and leather top, a dedicated salon rug, plush carpeting in the cabins, leather upholstered handles, coordinated bed covers and a bar predisposition in the saloon, all selected to enhance the onboard lifestyle. The lower deck follows a three cabin arrangement with an alternate dinette fitting, a sliding bathroom door and electric blackout curtains installed in every cabin except the crew area; guest cabins and the VIP cabin are fitted with electric roll in fabric curtains, the guest cabin offers a folding bed, mosaics adorn the VIP head and the port side guest head, and every shower includes practical soap dishes and shampoo holders. In the master suite wallpaper gives way to a mirror finish, a single piece mirror is integrated inside the wardrobe door, the master bathroom features a cupboard in lieu of a bidet, and an auxiliary 15 liter boiler with bypass serves the master cabin for

added comfort. The galley benefits from a top that differs from the starboard finish and the household systems have been enhanced with a separate washer and dryer unit complete with its own drainage.

Entertainment and navigation systems are specified to US standards, including a fifty five inch TV supplied without a frame and an A/V installation in the media room, a KVH HD7 satellite antenna with decoder for the upper salon and a Sat HD decoder for the USA, all integrated with the Furuno TZT navigation pack, USA version. The helm area is similarly appointed with additional spotlights at the main station, a glass holder at the main helm and controls that electrically slide forward for easier access. Lighting and visibility are extended across the vessel with courtesy lights on the sun deck and upper deck, exterior LED lighting, underwater lights beneath the bathing platform and both an aft camera and an additional aft camera to assist maneuvering. Deck conveniences include a fresh water tap in the anchor locker, a manually adjustable painted table in the forward external dinette, electrically actuated movement for the sun deck sunpad backrest, a gate on the steel railing, a black mesh cover for the windshield and side windows and a comprehensive canvas package.

Practicality at the dock has been addressed with stainless steel retractable mooring cleats on the bathing platform sides and a pair of fixed side mooring cleats, while the garage is prepared with non slip painting on the floor and outfitted for the accommodation of a jet ski or tender. A nautic maps holder is provided for navigation essentials. Propulsion is entrusted to twin MTU engines, each rated at 2,638 hp, complemented by Top System and aided by a 28 hp hydraulic stern thruster. Electrical and service upgrades include low water loss batteries, two generator battery chargers and a Glendenning system with remote control and switch (not located in the engine room), with exportation costs already accounted for. Safety equipment is supplied for sixteen people, comprising two life rafts for eight people each and sixteen life jackets, underlining the vessel's commitment to secure, effortless enjoyment at

sea.

Main salon

Passing through the hideaway sliding aft door, the salon opens into a gracious living area centered on a horseshoe couch and an L-shaped Poltron sofa, accompanied by an oversized light-grey Pershing sofa by Poltrona Frau, dressed with coordinating grey cashmere pillows and throws. A sliding double-seat sofa in Poltrona Frau leather is paired with matching leather ottomans, including one that converts to a table, while the dining table for six is complemented by four Poltrona Frau folding chairs in aluminum and leather and four additional chairs upholstered in Poltrona Frau leather. Practical storage is provided by a wood-clad wardrobe with clothes rack, dresser and internal light, flanked by two wood nightstands finished in Poltrona Frau leather, with a safe and fridge discreetly integrated for convenience.

Monolithic/stratified tempered glass side windows flood the space with daylight yet can be shaded by electric fabric roll curtains for the side windows, the sliding aft door and the interior, creating instant privacy when desired. Walls are panelled in fine wood and upholstered Poltrona Frau leather beneath a ceiling also trimmed in Poltrona Frau leather, where ceiling LED lights with indirect illumination and two dedicated reading lights are all dimmable via soft-touch switch plates. Underfoot a layered flooring concept combines parquet and timber finishes with an engineered nonslip wood floor in light grey to provide contrast, over a structural GRP floor covered in moquette, while upgraded leather appointments and rugs—including a rug beneath the sofa—add tactile warmth and visual depth. Entertainment is immersive: an AV setup centered on a Denon surround receiver driving a 5+1 speaker configuration sits alongside a HiFi surround 5+1 system (60 Hz) with a Sint amplifier and BluRay, all managed through a touch-screen remote and the vessel's domotics control panel; an electric lifting mechanism conceals a

hideaway 40-inch LCD TV, and comfort is further assured by a cordless intercom system and a digitally controlled air-conditioning system. Additional refinements include a cable area upgraded with a wood-and-leather inlaid top, a ceramic service set for 12, ceiling LED indirect lighting, stern bulkhead sound insulation, and the assurance of Shestakov Yacht Sales standards throughout.

Lower deck

The lower deck is bathed in a soft, refined glow from LED ceiling lights with indirect illumination, accentuating a ceiling finished in luxury vinyl fabric panels. Doors upholstered in leather introduce tactile sophistication, while two mirrors visually expand the space and four step-marker spotlights provide precise guidance. Soft touch switch plates offer intuitive control with an understated elegance, and the structural GRP floor is carpeted and elegantly framed in wood to combine comfort with robust construction. Walls are wrapped in fine wallpaper, complemented by a feature wall with cut-in recesses clad in wood that adds architectural interest, and everyday convenience is ensured by a washer and dryer discreetly integrated on this level.

Master cabin & ensuite

The master cabin is conceived as an elegant retreat where advanced systems and artisan finishes coexist. A dedicated hi-fi furniture unit in wood discreetly houses the audio-video equipment, complemented by a cordless intercom for effortless onboard communication. Blind compartments finished in vinyl are neatly integrated into the decor, while the ceiling features a lacquered frame with panels upholstered in vinyl fabric for a tactile, refined look. LED ceiling lights provide indirect illumination, adjustable via a dimmer to create the desired atmosphere, and the entrance is distinguished by a wood ceiling frame

with a luminous panel. Natural light enters through fixed side windows in stratified crystal, each accompanied by an opening stainless steel porthole secured by a mechanical hook, and electric blackout curtains guarantee complete privacy when required. The centerpiece is a wooden double bed, topped by a headboard and bed border upholstered in Poltrona Frau leather, with a light strip running beneath the frame and generous storage hidden within the locker and drawers below. The bed is supplied ready for use with mattress, pillows and bedcover, and a hideaway vanity unit upholstered in Poltrona Frau leather provides a discreet grooming area. Practical luxury continues with a wooden furniture unit concealing a fridge behind opening doors and mirrors lining the aft bulkhead. Upgrades such as mirrors replacing wallpaper and an enhanced mirror in the closet further elevate the suite, while soft touch switch plates and a digitally controlled AC system complete the modern conveniences of the space.

The ensuite continues the same level of refinement, with a lacquered ceiling and LED lighting that casts a soft, indirect glow. A glass door with a matte finish introduces a subtle, refined threshold, and an electric blackout roll curtain offers instant privacy. As in the cabin, light and ventilation come from fixed side windows in stratified crystal with opening stainless steel portholes secured by mechanical hooks. A built-in ceramic sink rests within a wooden washbasin unit with opening doors and is served by a combined washbasin faucet; combined bidet faucets are included in the specification, although this yacht features an upgraded cupboard in place of the bidet. Practical details enhance daily routines: a sliding mirror, soap dish and shampoo holder, two clothes hooks, two towel rails, a toilet brush holder and a toilet roll holder. The shower is a deliberate design statement, its walls clad in mosaic and enclosed by a tempered glass door; inside are a mirror, a mosaic shower plate, an object holder, a shower faucet and a generously sized showerhead. The floor is laid in parquet, with an available upgrade of mosaic throughout, and climate comfort is assured by a digitally controlled AC system along with an AC system outlet

dedicated to the ensuite.

Support and connectivity for the master suite are provided by a comprehensive signaling and communications array that includes two domes, a GPS antenna, a horn, a stainless steel lights mast, a GRP signal mast and two VHF antennas, ensuring the master cabin and ensuite are as technically well equipped as they are beautifully appointed.

VIP cabin & ensuite

The VIP cabin is conceived as a tranquil, high end retreat, appointed with an audio visual installation centered on a 24 inch LCD TV, two loudspeakers and a compact Hi Fi CD/DVD unit, with pre wiring prepared for a decoder including a 120V cable, F connector and TV satellite antenna cables.

Temperature is managed by a digitally controlled air conditioning system with a dedicated AC system outlet, while tactile soft touch switch plates, a dimmer and ceiling LED lighting with indirect accents set within a lacquered ceiling frame and vinyl upholstered panels create an atmosphere of subtle luxury.

Sleeping accommodation comprises a double wooden bed with a leather upholstered headboard and an under bed locker, furnished with mattress, pillow and bed cover, and accompanied by two wooden nightstands topped in sole leather, two reading lamps and a delicate light strip beneath the bed. The cabin's construction and finishes are thoughtfully specified: a structural GRP floor carpeted in moquette, timber clad walls and door, and a wooden wardrobe with clothes rack and internal light, augmented by two clothes hooks and an intercom cordless system. Natural light and privacy are controlled through fixed side windows in stratified crystal paired with an opening stainless steel porthole fitted with a mechanical hook, aluminum Venetian blinds, manual roll fabric curtains, blinders for the hatchway and electric blackout curtains, while blind compartments are finished in laminate and vinyl. A mirror on the fore bulkhead completes the spatial refinement.

The ensuite sustains the same elevated specification, featuring a lacquered ceiling and a lacquered cabinet with door above a wooden washbasin unit with hinged doors and a combined washbasin faucet, all set upon a parquet floor with mosaic tiling available as an upgrade. Practical luxury is evident in the electric ceramic WC, towel rail, toilet roll holder and toilet brush holder, accompanied by soft touch switch plates and a strategically positioned mirror. The shower enclosure is finished in standard laminate with tempered glass and a Corian shower floor, and includes a soap dish and shampoo holder. Ventilation and daylight come via opening stainless steel portholes with mechanical hooks, and a wooden door secures privacy while preserving the suite's elegant aesthetic.

Guest cabin & ensuite

The guest cabin presents a quietly luxurious sanctuary where warm wood-clad walls meet a structural GRP floor finished in moquette, and the ceiling is articulated with a lacquered frame and vinyl-upholstered panels. Soft, indirect illumination flows from ceiling LED lights controlled by a dimmer and operated via soft touch switch plates, while climate comfort is assured by a digitally controlled air-conditioning system with its own dedicated AC outlet. Communication is effortless thanks to an intercom cordless system, and an integrated audio visual package anchors the entertainment offering: an LCD TV 24", two loudspeakers and a Mini HiFi, with provisions for a decoder including cable 120V, F connector and TV sat antenna cables. Sleeping arrangements are both elegant and adaptable, with two wooden single beds crowned by a headboard upholstered in Frau leather and complemented by a folding bed; a wooden nightstand sits between them, flanked by two reading lights and mirrors on the aft bulkhead that amplify the sense of space. Natural light and privacy are meticulously managed by two opening portholes in stainless steel with mechanic hook, electric roll curtains and electric black-out

curtains, aluminum Venetian blinds, blind compartments finished in vinyl and laminate, and a dedicated curtain compartment, while a subtle light strip underneath the beac provides evening ambiance. Practical storage is provided by a wooden wardrobe fitted with a clothes rack, internal lighting and an inside mirror, with access through a wooden door.

The ensuite upholds the yacht's refined language, featuring a lacquered ceiling and ceiling LED lights with indirect lighting set above a parquet floor and a mosaic upgrade that introduces artisanal texture throughout. Daily rituals are elevated by a white ceramic washbasin mounted on wooden furniture with a combined washbasin faucet, accompanied by a washbasin unit in wood with opening doors and two lacquered cabinets, all mirrored and completed with soft touch switch plates. The shower box, clad in standard laminate and enclosed in tempered glass, rests on a Corian shower floor and is fitted with a soap dish and shampoo holder, while an electric ceramic WC provides contemporary convenience. Ventilation and daylight are provided by opening portholes in stainless steel with mechanical hook, with a clothes hook and towel rail positioned for ease of use; privacy and access are delineated by two wooden doors, one sided with sole leather, delivering an ensuite where form and function are harmoniously combined.

Exterior decks

Atop the vessel, the hardtop is equipped with two domes, a GPS antenna, a horn, a stainless steel lights mast, a GRP signal mast and two VHF antennas, presenting a fully appointed navigation array. The bow sun deck is appointed with courtesy lighting and a GRP sofa with seats and backrest upholstered in white vinyl, framed by a stainless steel handrail and fitted with two waterproof speakers that each offer independent volume control. Access to the bow locker is through a double hatch with secure closure while the anchoring and mooring arrangement at the bow comprises a basket chain, a galvanized

anchor with galvanized chain, mooring LED lights, a stainless steel mooring bow anchor roller and two stainless steel mooring cleats, complemented by an upgraded fresh water tap in the anchor locker and a 2700 W windlass with a waterproof control pad.

To port, GRP furniture conceals practical access to the crew quarter and engine room, reached via an inox and teak ladder that blends function with refined finishes. The aft deck is monitored by an aft camera and organized for mooring with two aft storage compartments, a pair of 1700 W capstans with foot controls, two stainless steel fairleads with rolls and two stainless steel mooring cleats to make handling effortless. The aft garage is engineered for tender operations, featuring a hangar door, a hydraulically operated tailgate kit, nonskid floor paint, a tender towing system with winch and two waterproof lights within the garage.

The swim platform and transom area are finished with teak-clad aft steps, a black water pump out cap, courtesy step lighting and an external shower, alongside dedicated caps for fresh water filling, a fresh water tap and fuel filling. Practical access is provided by a hatch on the bathing platform to starboard, integrated LED lighting, shore power 100A and a shore water inlet, together with two stainless gates for entry to the cockpit. Water-level amenities include a hydraulic hideaway swim ladder with alarm and a hydraulically movable swimming teak platform, while a telescopic hydraulic hideaway gangway with two remote controls and upgraded underwater lights beneath the bathing platform complete the sea-level experience.

Safe passage along the side decks is assured by two electric pantograph side doors, two side lockers at the bow dinette with closure and two Pershing silicon logos on the sides, supported by two stainless steel grabs on the superstructure flanks, two stainless steel midship mooring cleats, a stainless steel railing with stanchions, a steel rub-rail and teak decking. At the forward dinette, entertainment and comfort are combined with an amplifier with

remote control and loudspeakers, an external shower and a GRP sofa with seats and backrest upholstered in white vinyl, all illuminated by LED lighting beneath a manual Bimini top; the area is further enhanced by an additional amplifier with remote control loudspeakers, a second GRP sofa in white vinyl upholstery and teak underfoot.

Helm

Command at the helm is both instinctive and assured, where every surface speaks of refined comfort and technical mastery: the instrument binnacle and wheel are dressed in sumptuous Poltrona Frau leather set against sculpted carbon-fiber panels, while the Besenzoni pilot seat, upholstered in Poltrona Frau, offers double electric adjustment and an enhanced pilot backrest. Two co-pilot seats, likewise clad in Poltrona Frau leather, each provide double electric control. Ergonomic convenience is heightened by controls that electrically slide forward, soft-touch switch plates, electronic engine-control levers and two electronic digital LCD engine control panels. Navigation and situational awareness are comprehensive, with two chartplotters and a Furuno TZT navigation pack supported by a compass, a Naviop display, a Nautic map holder and an echo box with a 1 kW in-hull transducer, while dedicated readouts keep rudder angle, trim tabs, and water and fuel levels clearly visible; the engine-room remote camera streams directly to the plotter screen, and communications are handled via VHF radio and a telephone interface for GSM/voice/fax. Precision handling is effortless thanks to a bow-thruster joystick, a hydraulic stern thruster rated at 28 hp, a trim-tabs joystick and a surface-propellers trim joystick. Comfort and visibility are carefully considered with ceiling LEDs providing indirect lighting, an electrically operated sliding roof, a transparent tempered-glass windshield with two wiper/washer units and a black mechanical upgrade cover for the windshield and side windows, while an additional spotlight and two glove compartments complete a helm

crafted for confident control and enduring elegance, capped by a KVH HD7 satellite antenna including decoder.

Crew

The crew mess has been finished with an emphasis on comfort and operational practicality, centered around an audio/visual installation that includes a 24" LCD television, twin loudspeakers and a Mini HiFi CD/DVD unit. Lighting is comprehensive, provided by eight recessed ceiling spotlights and two under-shelf lamps, with soft-touch switch plates adding a refined tactile detail. The galley is built for professional service, equipped with a ceramic glass hob with four burners, a dishwasher, an electric oven, an extendable faucet and a 60 Hz extractor fan. Refrigeration is handled by a side-by-side fridge and freezer (60 Hz) positioned beneath a colored tempered glass worktop and paired with a stainless steel sink. Storage is abundant, featuring hanging lockers in unsealed oak with internal shelving and under-counter furniture finished with ivory lacquered doors concealing additional shelves and drawers. Daily life is arranged around a foldable table, a vinyl-upholstered sofa and matching ottoman set upon warm parquet flooring. Practical conveniences include a cordless intercom, walls clad in laminate with upholstered vinyl panels, a solid wooden door and climate control provided by a digitally controlled air-conditioning system.

The captain's cabin combines understated luxury with purposeful design, offering an audio/visual system with two loudspeakers and a Mini HiFi and illuminated by two recessed ceiling spotlights. The ceiling carries a lacquered frame with inset panels upholstered in vinyl fabric, echoed by laminate-covered walls and matching padded panels for a cohesive interior. Climate is maintained via a digitally controlled AC system, and entry is through an interior ivory-lacquered door with conveniently located light switches. Ample storage is provided by a locker hidden behind lacquered doors, while

practical amenities include a safe and a washer/dryer. Natural ventilation and daylight are provided by opening stainless-steel portholes with mechanical hooks, with bedside reading lamps and parquet flooring completing the serene, functional suite.

The crew cabin mirrors the same high standards, fitted with an audio/visual system comprising two loudspeakers and a Mini HiFi and lit by two recessed ceiling spotlights set into a lacquer-framed ceiling with vinyl-upholstered panels. Comfort is assured with a digitally controlled AC system and accessible light switches, while storage comes in the form of a locker with an ivory-lacquered door and an internal clothes rail. Sleeping provisions include two mattresses with pillows and bedcovers, complemented by two individual reading lights. Ventilation is via opening stainless-steel portholes with mechanical hooks, and the cabin's walls are finished in laminate with upholstered panels over parquet flooring for a durable yet elegant interior.

The crew ensuite is executed with a crisp, functional elegance, featuring three recessed ceiling spotlights, a lacquered ceiling and entry through an interior ivory-lacquered door. Walls are clad in laminate with upholstered vinyl panels, and fittings include a combined washbasin faucet above an ivory-lacquered washbasin unit with a GRP top and opening doors, accompanied by a mirror, clothes hook and towel rail. The shower is enclosed within a laminate shower box with a tempered glass door and served by a shower faucet and rail, while parquet underfoot adds a warm touch. The space is completed by a porcelain electric WC and opening stainless-steel portholes with mechanical hooks for ventilation.

Technical

The heart of the vessel is powered by uprated MTU 16V 2000 M96L diesel engines that furnish exceptional performance; engine hours are recorded at Port 674 and Starboard 728, and the engine room benefits from an onboard

AC unit to maintain climate stability. Access is provided through a light-alloy waterproof door, and within the machinery space additional light-alloy waterproof doors, dedicated lighting and comprehensive thermal-acoustic insulation contribute to a safe, comfortable environment. An air compressor (220 V 50 Hz) services the air intakes while an AC electric pump supports auxiliary onboard systems. Mechanical robustness is reinforced by two coupling joints between the adaptor and TS flange with an added protective cover, two stainless-steel engine exhaust raisers paired with two engine exhaust mufflers, and two engine-room pillars mounted over anti-slip aluminum decking; ventilation and extraction are handled by two electric extractors. Electrical power generation relies on two 23 kW 120/240V 60 Hz generators—configured as main and auxiliary—each supported by dedicated manifolds, gas separators and single-type Racor prefilters; generator hours are Port 873.9 and Starboard 950.4. A hydraulic oil heat exchanger preserves optimum operating temperatures and discrete hydraulic units operate the gangway, swim ladder, garage hatch, sun deck stain and aft door, as well as the platform, trims, trim tabs and steering, while a waterproof camera provides additional oversight and is interfaced with the bridge. The drive and maneuvering systems include a hydraulic bow thruster and hydraulic steering, two hydraulic trim tabs, and a surface-drive arrangement with automatic trim working in tandem with two nickel–aluminum–bronze six-blade surface propellers and a 28 hp hydraulic stern thruster. The fresh water installation comprises two 30-liter electric boilers, a fresh water inlet from the tank and a dedicated fresh water outlet in the engine room, fed by two fresh water pumps with autoclave—one 24V and one 240V—and a shore fresh water intake with pressure regulator for convenient dockside supply; the water maker uses an independent sea water intake with filter, and monitoring/control is provided by a level sensor and a Glendenning unit with remote control and switch. Sea water systems are built for redundancy and safety, with two bypass valves for emergency bilge discharge from the engines, two dynamic sea water intakes

and three static sea water intakes, and an electric pump for fire extinguishing and chain wash; five sea water basket filters serve the engines, power generators, AC pumps, services and fire extinguishing system, and a sea water outlet for chain wash and fire extinguishing is located in the forward locker. Grey water management is equally comprehensive, with electric pumps for auxiliary and main tank discharge, level sensing, and a manifold bypass to permit emergency grey and black water pump discharge; all flows are collected in a 300-liter polyethylene tank controlled by a three-way valve located in the galley. Climate comfort is provided by an air conditioning system rated at 152,000 BTU. Fire protection is layered and automatic/manual in the engine-room and system areas via an FM200 Fire Boy installation, supported by emergency engine shut-down remote control and remote actuation for the fire extinguishing system and alarms; manual powder extinguishers are positioned in the engine room, cockpit and in each accommodation space, with smoke detectors in the salon, galley, cabins and crew cabin. The electrical architecture is laid out for reliability and American compatibility, with battery cutoffs, a battery charger for engines and generators sourced from the service batteries, and a breaker box for American shore power; an earthing system runs the length of the hull and ties into anode protection (zincs) on the transom. Redundancy includes an emergency parallel connection between the service batteries and the engine starter, four engine starter batteries, two generator battery chargers and two power generator starter batteries, and equipment power has been converted to 60 Hz. Protective measures extend to grounding of sea water intakes and railings and to ground fault interrupters (120V 6mA) in all heads, the galley and the engine room. A 60 Hz/120V inverter serves the galley refrigerator exclusively and a 25 KVA isolation transformer enhances shore-power safety. Control and monitoring are concentrated via two main electric LCD digital panels for engine management, a parallel connection between generator batteries, and a switchboard in the dinette equipped with 120/240V voltage measuring instruments. Hotel loads are

supported by twelve service batteries with a dedicated service battery charger, and shore connections include a 100A 60 Hz shore power socket, a shore socket with loose cable and American-type 120V sockets doubled in each box. Fuel management is precise, featuring an electronic fuel-level remote indicator at the dashboard, two fuel decanter filters, a fuel sight gauge and a manual fuel discharge/load drainage pump feeding a structural GRP tank. Bilge protection is comprehensive, with automatic/manual immersion electric pumps for bilge discharge in each watertight compartment with level sensing, an electric pump with a valve system permitting either separated or joint bilge operation with centralized suction, and an emergency engine-room bilge discharge capability via engine intake suction.

Disclaimer

The particulars of this yacht are provided in good faith; however, their accuracy cannot be guaranteed and no warranty is given as to the vessel's condition. The yacht is offered for sale subject to prior sale, change of price, or withdrawal from the market without notice. These details are supplied solely as a convenience to clients by the yacht broker and are not intended to constitute direct representation of any specific yacht for sale.

CONTACTS

Shestakov Yacht Sales is a brokerage company specializing in the sale and service of yachts worldwide. The company offers services for buying and selling both new and used motor yachts, sailing vessels, and luxury superyachts. They also provide yacht registration, insurance, technical maintenance, crew selection, and charter organization services across the U.S., Canada, Latin America, the Caribbean, and the Bahamas.

The founder and lead broker of the company is Andrey Shestakov, a licensed and certified expert with extensive experience in marine engineering and shipbuilding.

The company has an extensive network of partnerships with major yacht manufacturers worldwide and provides services in multiple languages, including Russian, Ukrainian, Spanish, and English. The office is in Dania Beach, Florida, USA.

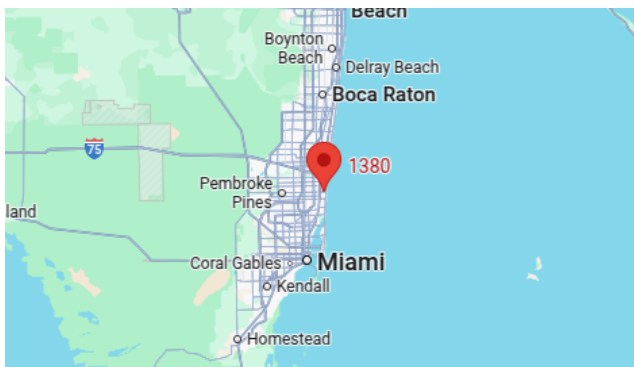
For more information and to view available yachts, you can visit the company's official website: <https://shestakovyachtsales.com>

Contact details

Phone: +1(954)274-4435

Email: andrey@shestakovyachtsales.com

Address



1380 Weeping Willow Way, Hollywood,
Florida 33019