

## 82 OCEAN ENCLOSED - SUNSEEKER



**Builder:** [Sunseeker](#)

**Beam:** 21' 0" (6.55 m)

**Year Built:** 2026

**Max Draft:** 19' 11" (6.08 m)

**Model:** 82 Ocean Enclosed

**Price:** - Subject to change.

[See full listing on our website](#)

**Location:** Fort Lauderdale, United States

**LOA:** 82' 0" (24.99 m)

---

# TABLE OF CONTENTS

---

<b>OVERVIEW .....</b>	<b>3</b>
<b>SPECIFICATIONS .....</b>	<b>4</b>
Basic Information .....	4
Dimensions .....	4
Speed, Capacities and Weight .....	4
Accommodations .....	4
Hull and Deck Information .....	5
Engine Information .....	5
<b>GALLERY .....</b>	<b>6</b>
<b>DETAILED DESCRIPTION .....</b>	<b>16</b>
<b>CONTACTS .....</b>	<b>23</b>

## OVERVIEW

---

The 82 Ocean Enclosed extends the same expansive footprint as its open sistership, now augmented by an enclosed flybridge that brings heightened climate adaptability. Conceived as an all-season luxury motor yacht and enclosed-bridge cruiser for bluewater and coastal cruising, she retains generous social zones and a tastefully crafted interior while elevating comfort, long-range capability, and everyday usability across shifting conditions.

# SPECIFICATIONS

---

## Basic Information

---

**Category:**  
Motor yachts

**Year Built:**  
2026

**Sub category:**  
Motor Yacht

**Country:**  
United States

**Model Year:**  
2026

## Dimensions

---

**LOA:**  
82' 0" (24.99 m)

**Max Draft:**  
19' 11" (6.08 m)

**Beam:**  
21' 0" (6.55 m)

## Speed, Capacities and Weight

---

**Water Capacity:**  
396 Gallons

**Fuel Capacity:**  
2245 Gallons

## Accommodations

---

**Total Heads:**  
5

**Crew Cabin:**  
2

## Hull and Deck Information

---

**Hull Material:**

Fiberglass and Plastic Yachts

**Hull Designer:**

N/A

**Deck Material:**

Fiberglass

**Interior Designer:**

N/A

**Hull Configuration:**

N/A

## Engine Information

---

**Engines:**

2

**Engine Type:**

Inboard

**Manufacturer:**

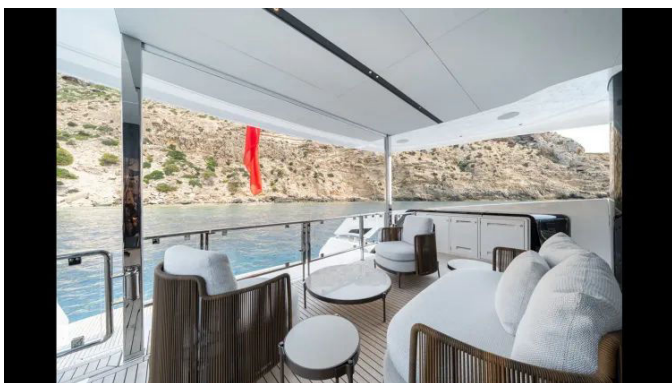
MAN

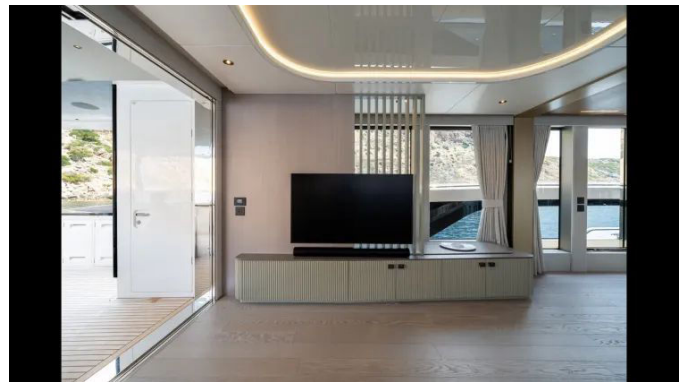
**Fuel Type:**

Diesel

# GALLERY

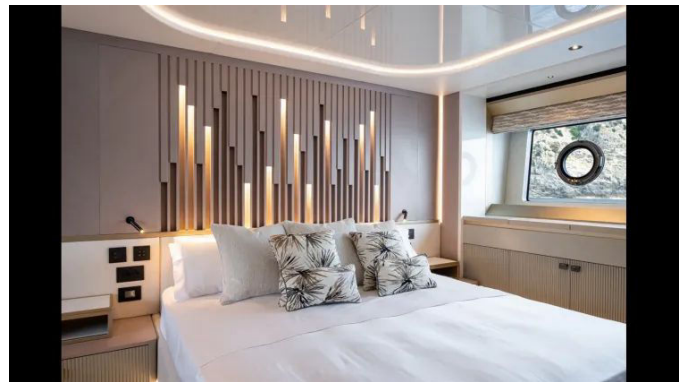
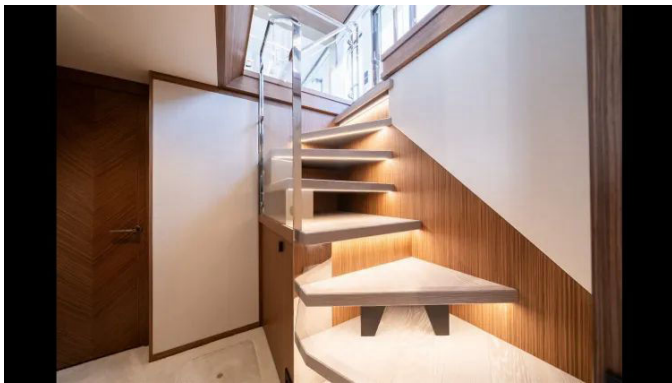


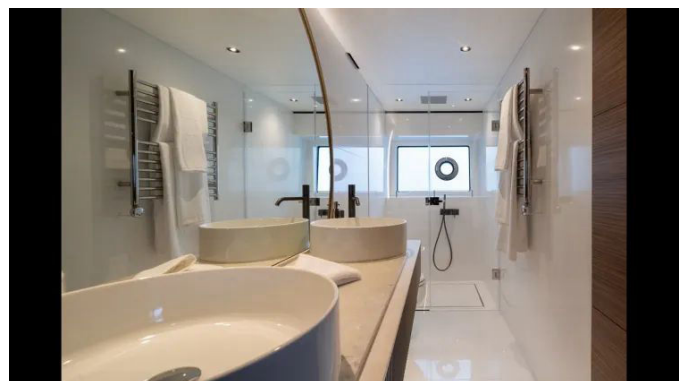


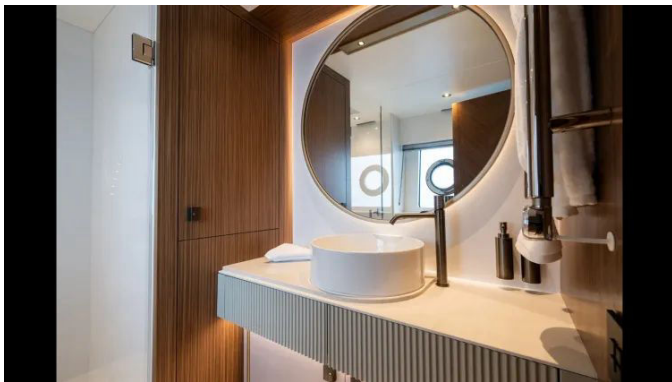


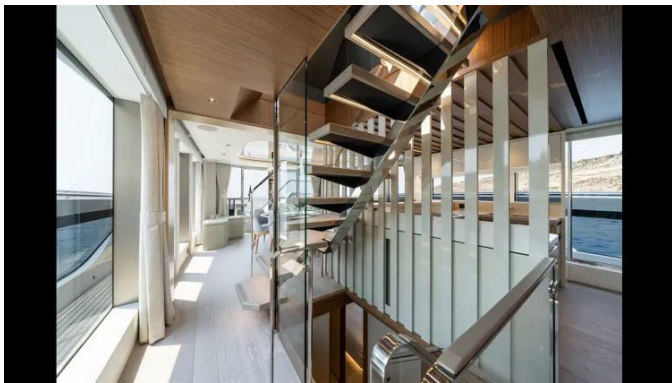
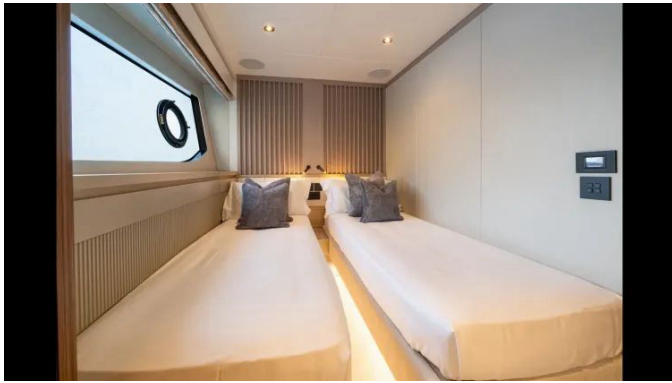


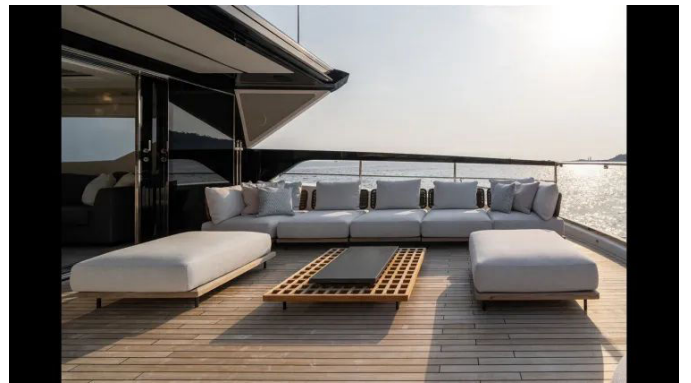
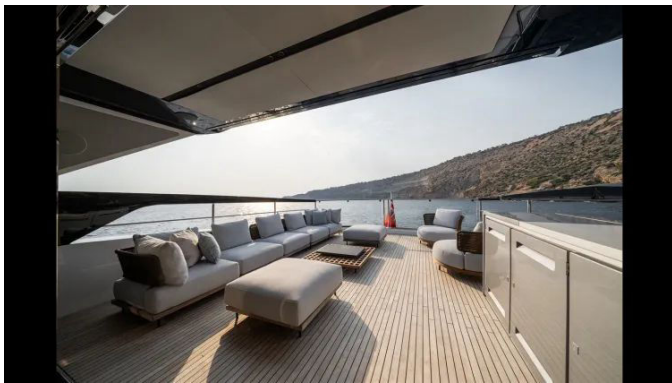












---

# DETAILED DESCRIPTION

---

## Factory installed options

---

Specified with a comprehensive suite of factory-installed options, this yacht elevates comfort, control, and style across every deck. Exterior relaxation is mastered with carbon fibre sun awnings—two-pole on the wheelhouse deck and four-pole on the foredeck—an integrated exterior staircase from the aft cockpit to the flybridge capped by a carbon fibre companionway hatch, and a full complement of tailored protection: an Aft Cockpit Covers Package for cockpit seating, an electrically operated aft cockpit privacy screen, a Fore Deck Covers Package for foredeck seating and tables, a Flybridge Covers Package and Flybridge Spa Tub Covers, plus a dedicated windscreen cover; all cover packages are price-dependent on the chosen customer layout. The aft cockpit gains a Minerva folding table on a fixed stainless steel leg, fixed GRP seating, a Rear Camper with windows, and stainless steel LED courtesy lighting running from the aft cockpit to the bow along the side decks and around the bow seating group. Teak decking spans the aft cockpit, steps to the lower deck, the lower deck and the platform, while the bathing platform itself is hydraulically lifting with a maximum lift capacity of 650 kg and supports a tender up to 550 kg. Waterside enjoyment is complemented by a carbon fibre and chrome overhead shower stand with socket and a Whale Twister hand-held swim shower, a pair of retractable tender cleats on the platform corners, and a parasol with an offset post and two sockets, one either side of the platform. On the foredeck, both port and starboard upholstered seating groups feature rise-and-fall tables finished in Minerva that lower to form sunbeds with in-fill cushions. The bootstripe is jet black against a white hull, underwater lights are Lumishore Supra THX404 LED in a set of eight dual-colour white/blue units—four across the stern and two on each side—and medium tinted film

(Johnsons Sun70) is applied to side windows and sliding doors, with mesh covers supplied for the main deck side windows to port and starboard and the foredeck doors. Access and security are enhanced by port and starboard side access bulwark doors, an eight-step side-mount stairway with hull fittings both sides, side deck handrails fitted outboard in lieu of the standard inboard position, and polished stainless steel mooring bollards port and starboard on the foredeck and aft main deck with fairleads, plus two sets of polished stainless spring cleats on the bulwarks. A polished stainless steel ensign staff is sized for a 2.5-yard ensign, visibility is assured by a Sanshin Twin Beam remote-controlled LED 24 V searchlight HRL2070, and sound signalling is via an AFI dual trumpet horn 11018 XLDP/24 V. Ground tackle and line-handling are thoroughly specified with twin Lewmar V8 24 V windlasses with vertical gypsies, manual hand-wheel brakes and Devil's Claw chain stopper, twin Lewmar C5 24 V vertical capstan winches at the bow and matching twin Lewmar C5 24 V vertical capstans at the stern, plus a full package aft cockpit docking control station and a flybridge port-side wing station for confident close-quarters handling. Performance and poise are optimized by the Humphree Interceptor System with Auto Trim, Auto List, roll/pitch stabilisation and coordinated turn, together with the Humphree SU563 fin stabilization system 24 Vdc with 1.3 m<sup>2</sup> fins. Propulsion is entrusted to twin MAN V12 1650 engines, two rated at 1650 PS each, with a MAN Aventics Marex OS 3D joystick docking system at the main helm and a MAN 7" iSea monitoring display; a compass is professionally swung and adjusted with a correction card supplied. Navigation, situational awareness and surveillance are state-of-the-art with two Garmin 22" multi-functional displays with remote input device and SD, a Garmin GPSMAP 12" MFD with Garmin VHF repeater handset and active speaker, Garmin GRM Fantom 56 radar with 6 ft open array and 72 nm range, Garmin Surround View with an array of six cameras around the boat creating a bird's-eye view with distance guides to assist docking, and CCTV with three cameras for stern docking and engine monitoring. All navigation equipment is

supplied by the manufacturer or finished in sprayed black, and LED navigation lights are fitted in lieu of standard. Power is clean and continuous via a Shore Converter 37.5 kVA dual input providing galvanic isolation from shore supply, stabilising onboard voltage across varying shore conditions and allowing connection to any voltage or frequency, single or three phase. Shore power connects through one 100 Amp 250 Volt rated flexible cable on a Glendinning Cablemaster motorised retraction system. The electrical ecosystem further benefits from a Victron 5 kW Quattro inverter delivering a regulated and uninterrupted 120 V 60 Hz single-phase supply to the audio-visual domain, Sunseeker Cm8 integrated power management with a 10" glass touch display for boat monitoring and full access control, repeated in the crew mess, interior AC 110 V 60 Hz USA three-pin sockets throughout, two 110 V AC sockets in waterproof enclosures in the aft cockpit starboard-side wetbar forward compartment and two more 110 V AC sockets in a waterproof enclosure in the upper deck wetbar, LED down-lighting on the cockpit overhead, and LED lighting control on momentary push-button Vimar switches with dimmer functionality. Every social space has been refined. The main deck adopts the Aft galley with dining to port, a mid-level bar with stools, and Forward saloon A configuration, with main deck fixed full-height glass to port and a full-height manually sliding access door to starboard, manually operated fully glazed sliding doors aft from the saloon to the cockpit, and manually operated fully glazed sliding doors forward from the main deck to the foredeck with a pneumatic seal. The main deck dining table is elevated to a full stone top with a demi-bullnose undercut at the table leg, formed in an elliptical shape per GA, with the tabletop finished in Parisien Bleu Polished and the leg finished in Smoked Eucalyptus High Sheen Satin. The forward saloon sofa is tailored with custom shelving behind the backrest—set slightly lower to remain concealed—with AC 110 V sockets and USB charging points, providing four 110 V outlets and four USB outlets; curtains in the main deck saloon, dining and galley are electrically powered, while the galley's venetian blind remains

manual. The upper deck saloon gains a manual sliding access door on the port side forward and manually operated fully glazed sliding doors aft to the fly, its TV unit top is upgraded to Caesarstone in lieu of standard Minerva, the saloon sofa is adjusted to open into the helm observation area with the observation area shortened appropriately, and the hardtop integrates an aft electric awning; the flybridge wet bar moulding and doors are spray-paint finished. On the flybridge aft upper deck, twin electric rise-and-fall tables replace the standard arrangement; the one-piece Minerva Carrara Gloss table tops, with no folding leaves, include infill cushions to convert the area to a sunpad. A spa tub with infinity glazing is installed on the wheelhouse deck with built-in sunbathing; both sunpads either side boast electrically folding backrests, with dedicated spa tub covers. Throughout, Piano Black console panels set a sophisticated tone, Opti Grey mirrored inboard window column faces enrich the main deck ambiance, and tropical-spec spray-applied insulation foam is applied to the upper deck saloon deckhead for superior thermal comfort. Galley and entertaining capability are first-class. The specification includes Custom Galley Integrated Refrigeration by Frigoboat G67290 with a stainless steel interior delivering 250 litres of fridge capacity and 120 litres of freezer capacity, plus an additional under-counter custom galley integrated Frigoboat MS130 stainless steel drawer refrigerator; a Frigoboat MS130 stainless steel drawer refrigerator with a water-cooled compressor is also fitted on the flybridge aft deck. Supplementary cold storage features two Webasto Isotherm Cruise 36 drawer refrigerators, each 24 V and 36 litres, fitted either side of the seating group, a Vitrifrigo C75LX 75 litre 24 V water-cooled refrigerator in the aft cockpit, a matching Vitrifrigo C75LX 75 litre 24 V water-cooled refrigerator on the foredeck, and a Vitrifrigo C50i refrigerator with integral freezer box in the crew mess. Icemaking is assured by a Hoshizaki IM-30CNE unit on the flybridge aft deck and a Vitrifrigo IM XT OCX2 Hydro in the aft cockpit; a T-Safe medical freshwater purification filter serves all independent icemakers. Cooking appliances include a Miele KM6520FR four-zone ceramic hob, a Miele

H7660BP electric oven, a Miele M6040SC microwave oven, a GE Appliances GCST07N1WSS microwave oven in the crew mess, a Miele G7966SCVi full-size dishwasher, a Miele KWT6322UG wine cooler for thirty-four bottles in the galley, a Marine Electric ceramic direct cooktop that folds out from the coaming sides with fold-out workstations, and a Marine Electric stainless steel BBQ grill Techimpex BBQ74, seven hundred and forty millimetres wide, on the flybridge aft deck. Fresh-water autonomy and comfort are bolstered by a Spot Zero Seaxchange Compact fully automatic freshwatermaker RO system with local 7" colour touchscreen, Model XTCII 2200Z, producing up to 8,328 litres two thousand two hundred U.S. gallons per 24 hours, with a remote 7" colour touchscreen; hot water is provided by a 200 litre calorifier with three 2 kW immersion heaters, a 60 litre expansion tank and a hot-water circuit ring main throughout the lower and main decks driven by a permanently running AC circulation pump, supplemented by a second 100 litre calorifier with a 2 kW immersion heater. Shore-side fresh-water connection uses a pressure regulator. The ElectroSea Clearline system protects air-conditioning lines and strainers from marine growth infestation. Sanitaryware is upgraded to Tecma Silent Plus 24 Vdc macerating toilets, and a day head is added on the port side of the upper deck enclosed flybridge, with a main deck day head specified in lieu of the standard cloakroom. Cabin refinement and joinery are curated with precision. Interior wood is Band Two with a choice of Flamed Dark Walnut, Nero Legna or Smoked Eucalyptus figured in a satin lacquer finish; all cabin headboards feature an upgraded platinum upholstery fabric; four guest ensuite upper vanity tops are finished in Caesarstone Parisien Blue Polished instead of the standard Minerva; the port-side dining unit top is trimmed in Bone Leather Atlas A732 in lieu of standard Minerva; door furniture is elevated with Turnstyle Barrel Centre Part Hammered Solid cabin door handles in a burnished nickel finish and Turnstyle Ledge Hammered Push Button cabinet catches in matching burnished nickel. A full-height silver-tone mirror is fitted just outside the master cabin entrance with its frame finished in Smoked

Eucalyptus High Sheen Satin; the lower deck master stateroom also gains a Dometic Safe MD 281 concealed in cabinetry, eight point three litres capacity with dimensions W280 mm x H165 mm x D235 mm, and a key lock for the cabin door. Guest accommodations are tailored with the port guest cabin configured with single beds with the inboard bed sliding to create a double, with bed coverings provided for both the double and single set-ups, and the starboard guest cabin configured with a double berth; lower deck guest cabins receive electrically powered Roman blinds in lieu of manual. Comfort is completed by sprung mattresses for all cabin beds and wood flooring specified for the galley, the main deck saloon and dining, the upper deck saloon and helm, the staircase to the lower decks and to the flybridge, and in the lower deck lobby from the aft stateroom door to the VIP stateroom entrance door. Serviceability and protection are engineered in. Antifouling is applied using Seajet 117 epoxy primer and Seajet 033 Shogun Black self-polishing antifoul; an engine room access door connects from the crew cabin via a Seaglaze Series 28 Ocean heavy-duty watertight door; a Marco electric transfer pump oil change system serves engines and generators with quick-coupling connection pipes; the Separ FPS-210 fuel polishing system eliminates the build-up of algae and water in the tank with 99.8 percent water and partial removal; and a fresh-water marina connection pressure regulator is included. Further details include flybridge hardtop aft electric awning, flybridge wet bar moulding and doors spray-paint finished, a full package aft cockpit docking control station, Garmin/AV architecture aligned with premium expectations, and Sunseeker Cm8 integrated power management with 10" glass touch display and crew mess repeater. Finally, a windscreen cover is supplied, all navigation equipment is presented in manufacturer supply or sprayed black, and the build incorporates elegant Piano Black console panels and Opti Grey mirrored accents to complete a thoroughly modern specification.

## Disclaimer

---

These particulars are offered in good faith, but neither the accuracy of the information nor the condition of the vessel is guaranteed or warranted. The yacht is offered subject to prior sale, price change, or withdrawal from the market without notice. The information is provided as a convenience and is not intended to convey direct representation of a specific yacht for sale.

# CONTACTS

---

Shestakov Yacht Sales is a brokerage company specializing in the sale and service of yachts worldwide. The company offers services for buying and selling both new and used motor yachts, sailing vessels, and luxury superyachts. They also provide yacht registration, insurance, technical maintenance, crew selection, and charter organization services across the U.S., Canada, Latin America, the Caribbean, and the Bahamas.

The founder and lead broker of the company is Andrey Shestakov, a licensed and certified expert with extensive experience in marine engineering and shipbuilding.

The company has an extensive network of partnerships with major yacht manufacturers worldwide and provides services in multiple languages, including Russian, Ukrainian, Spanish, and English. The office is in Dania Beach, Florida, USA.

For more information and to view available yachts, you can visit the company's official website: <https://shestakovyachtsales.com>

## Contact details

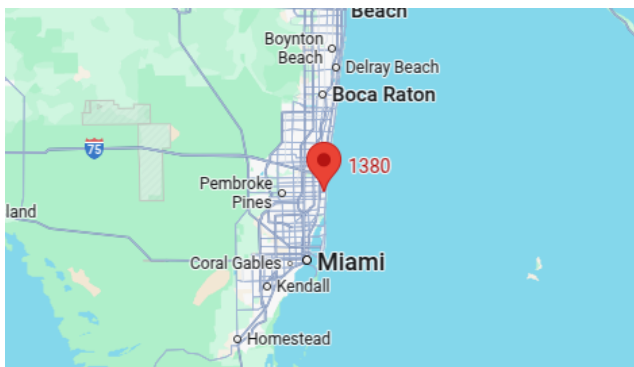
---

**Phone:** +1(954)274-4435

**Email:** [andrey@shestakovyachtsales.com](mailto:andrey@shestakovyachtsales.com)

## Address

---



1380 Weeping Willow Way, Hollywood,  
Florida 33019