

## 2006 SUNSEEKER MANHATTAN 'FINS UP' - SUNSEEKER



**Builder:** [Sunseeker](#)

**LOA:** 82' 0" (25.15 m)

**Year Built:** 2006

**Beam:** 20' 0" (6.19 m)

**Model:** N/A

**Min Draft:** 9' 10" (3 m)

**Price:** \$1,345,000 USD Subject to change.

**Max Draft:** 18' 7" (5.67 m)

[See full listing on our website](#)

**Location:** Miami, United States

**Cruising Speed:** 23 Knots (26.47 MPH)

**Max Speed:** 30 Knots (34.52 MPH)

---

# TABLE OF CONTENTS

---

<b>OVERVIEW .....</b>	<b>3</b>
<b>SPECIFICATIONS .....</b>	<b>4</b>
Basic Information .....	4
Dimensions .....	4
Speed, Capacities and Weight .....	4
Accommodations .....	5
Hull and Deck Information .....	5
Engine Information .....	5
<b>GALLERY .....</b>	<b>6</b>
<b>DETAILED DESCRIPTION .....</b>	<b>14</b>
<b>CONTACTS .....</b>	<b>18</b>

## OVERVIEW

---

FINS UP is an arresting exemplar of Sunseeker's Manhattan line — an 82 foot Flybridge Motor Yacht that fuses sharp British styling with generous interior volume and intelligently arranged, convivial living areas. Step aboard and the layout invites entertaining: a broad teak aft cockpit set for alfresco dining, a radiant saloon enclosed by sweeping windows and cushioned lounge seating, and an expansive flybridge appointed with a wet bar, barbecue and sunpads for long, sun filled days afloat. It is a luxury yacht cruiser that carries the unmistakable presence of a superyacht.

# SPECIFICATIONS

---

## Basic Information

---

**Category:**  
Motor yachts

**Year Built:**  
2006

**Model Year:**  
2006

**Country:**  
United States

## Dimensions

---

**LOA:**  
82' 0" (25.15 m)

**Beam:**  
20' 0" (6.19 m)

**Min Draft:**  
9' 10" (3 m)

**Max Draft:**  
18' 7" (5.67 m)

## Speed, Capacities and Weight

---

**Cruise Speed:**  
23 Knots (26.47 MPH)

**Water Capacity:**  
396 Gallons

**Max Speed:**  
30 Knots (34.52 MPH)

**Fuel Capacity:**  
1717 Gallons

## Accommodations

---

**Sleeps:**

8

**Crew Cabin:**

1

**Total Heads:**

3

**Crew Berths:**

2

## Hull and Deck Information

---

**Hull Material:**

Fiberglass and Plastic Yachts

**Hull Designer:**

Sunseeker

**Deck Material:**

Fiberglass

**Interior Designer:**

Sunseeker

**Hull Configuration:**

Semi-Displacement

## Engine Information

---

**Engines:**

2

**Engine Type:**

Inboard

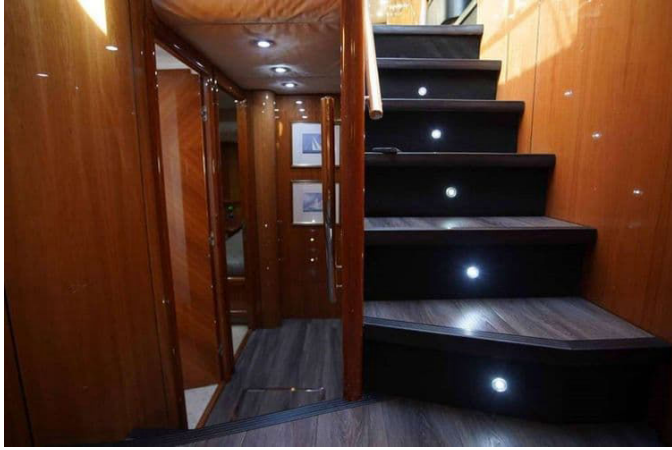
**Manufacturer:**

Caterpillar

**Fuel Type:**

Diesel

# GALLERY

















## DETAILED DESCRIPTION

---

### Salon

---

Step into a bright, contemporary salon framed by warm wood flooring and opposing L shape sofas to port and starboard, creating an inviting conversation lounge. A dedicated salon TV pairs with an integrated camera for effortless monitoring, while new LED overhead lights set a refined ambiance day or night. A discreet window shade ensures privacy and glare control at a touch.

### Dining area

---

Just forward of the salon, the dining area gathers family and friends around a handsome teak table with eight seats, all set atop matching wood flooring for a continuous, yacht-wide aesthetic.

### Galley

---

The galley is perfectly arranged for gourmet cruising, featuring a full size refrigerator, a Bosch four ring ceramic hob with a dedicated extractor, a stainless sink, and both a combination microwave/oven and a separate oven for versatile meal prep. A Bosch dishwasher streamlines clean up, while a granite countertop and wood flooring deliver durability wrapped in timeless elegance.

### Lower helm & electronics

---

At the lower helm, dual helm seats face a confident command center with two Simrad displays and a Simrad autopilot, flanked by two CAT electronic engine

displays for instant, at a glance diagnostics. Precision handling comes via bow/stern thrusters, guided by a Ritchie compass and HR 1012 Sanshin control, while an AC thermostat refines comfort on passage. A watertight side door speeds movement on deck, and a chart table to port keeps navigation neatly organized.

## Master stateroom:

---

The full beam master stateroom is a private sanctuary, entered through a graceful, foyer style entrance and centered on a king size berth. To starboard, a dedicated makeup area with mirror offers a refined personal space, while a sofa to port, dual reading lights, and a TV invite you to unwind. Thoughtful cabinetry provides ample storage throughout, maintaining a serene, clutter free retreat.

## Master ensuite:

---

The master ensuite indulges with dual sinks and richly finished granite flooring and countertop, complemented by a Tecma head and matching Tecma bidet. A large shower, exhaust fan, wide mirror, and a neatly arranged medicine cabinet complete a space where luxury meets daily ease.

## VIP stateroom

---

The forward VIP stateroom welcomes guests with a queen berth and a sofa to port, while a makeup mirror with a seating area to starboard creates a quiet dressing nook. Entertainment and storage are equally considered with a TV and a true walk in closet, and the ensuite head features a full shower set over striking black marble flooring. Soft carpet underfoot adds a final, indulgent touch.

## Port guest stateroom

---

The port guest stateroom is smartly configured with dual bunks featuring lower storage, a hanging locker for neatly pressed attire, and an AC thermostat to tailor the climate to every preference.

## Starboard guest stateroom

---

To starboard, guests enjoy two single berths, a hanging locker, and a thoughtful entertainment suite including a TV, a Samsung TV, a Sony stereo, and focused reading lights. An ensuite head adds welcome privacy.

## Aft cockpit area

---

The teak laid cockpit is crafted for open air living, with an aft fixed bench concealing storage and a teak table with folding leaves on a robust GRP base for flexible entertaining. Practicality abounds with aft rope lockers, stern safety gates, and a side door entrance for easy boarding, while an engine room access hatch and a molded staircase to the flybridge with teak treads keep movement seamless. Evenings elevate with an LG TV, Fusion audio speakers, and a wine cooler; handling is aided by two 24V stern capstan winches with fairleads and LED overhead cockpit lights (24V). A door provides access to the crew/engine room, and waterside enjoyment comes via a hydraulic swim platform, swimming ladder, fresh water shower, and a passerelle.

## Flybridge

---

On the flybridge, teak decks lead to an acrylic deflecting screen and two helm seats, with storage lockers thoughtfully placed beneath the seating. A teak dining table on a GRP base anchors the social space, complemented by an

upholstered sunbathing area forward and stainless steel aft safety rails. Entertaining is effortless at the wetbar with sink, ice maker, wine cooler, and grill, under the sleek radar arch and protective bimini top; an L shape sofa with wood table invites lingering, Fusion speakers set the soundtrack, and a companionway hatch opens directly to the aft cockpit. Dual horns announce your arrival, a grill is highlighted for alfresco dining, a Quick Lift crane stands ready for tender handling, a washdown keeps everything spotless, and an eight person liferaft provides added peace of mind.

## Flybridge helm

---

The flybridge helm mirrors the confidence of the lower station, with dual Simrad displays and a Simrad autopilot alongside two CAT electronic engine displays. Side Power bow/stern thrusters fine tune control, while a Ritchie compass and HR 1012 Sanshin control round out a precise, intuitive command suite.

## Engine room

---

Power comes from twin 2012 Caterpillar C32 engines, 1,700 hp each, showing 3,250 hours, matched to ZF Marine transmissions with a 2.497 ratio. Ship's power is supported by two Kohler 19 kW generators with 8,530 hours. The driveline features 3" stainless steel shafts turning two five blade Nibral propellers for smooth, efficient thrust.

# CONTACTS

---

Shestakov Yacht Sales is a brokerage company specializing in the sale and service of yachts worldwide. The company offers services for buying and selling both new and used motor yachts, sailing vessels, and luxury superyachts. They also provide yacht registration, insurance, technical maintenance, crew selection, and charter organization services across the U.S., Canada, Latin America, the Caribbean, and the Bahamas.

The founder and lead broker of the company is Andrey Shestakov, a licensed and certified expert with extensive experience in marine engineering and shipbuilding.

The company has an extensive network of partnerships with major yacht manufacturers worldwide and provides services in multiple languages, including Russian, Ukrainian, Spanish, and English. The office is in Dania Beach, Florida, USA.

For more information and to view available yachts, you can visit the company's official website: <https://shestakovyachtsales.com>

## Contact details

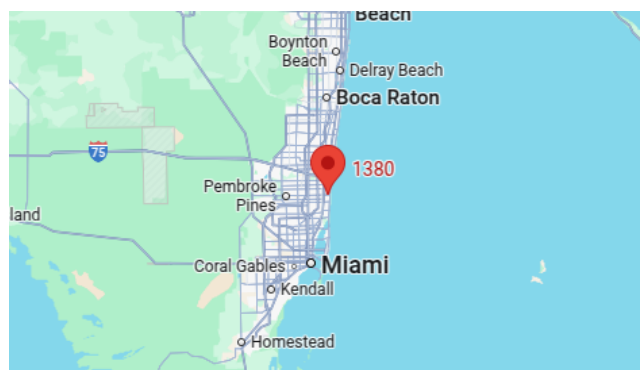
---

**Phone:** +1(954)274-4435

**Email:** [andrey@shestakovyachtsales.com](mailto:andrey@shestakovyachtsales.com)

## Address

---



1380 Weeping Willow Way, Hollywood,  
Florida 33019