

AB 80 - AB YACHTS



Builder: [AB Yachts](#)

LOA: 83' 0" (25.40 m)

Year Built: 2025

Beam: 21' 0" (6.50 m)

Model: AB 80

Min Draft: 4' 5" (1.35 m)

Price: \$10,518,042.48 USD Subject to change.

Max Draft: 4' 5" (1.35 m)

[See full listing on our website](#)

Location: Viareggio, Italy

Cruising Speed: 49 Knots (56.39 MPH)

Max Speed: 54 Knots (62.14 MPH)

TABLE OF CONTENTS

OVERVIEW 3

SPECIFICATIONS 5

 Basic Information 5

 Dimensions 5

 Speed, Capacities and Weight 5

 Accommodations 5

 Hull and Deck Information 6

 Engine Information 6

GALLERY 7

DETAILED DESCRIPTION 14

CONTACTS 18

OVERVIEW

An extraordinary opportunity awaits the connoisseur to reserve a brand new AB80 from the celebrated Italian shipyard AB Yachts, with delivery scheduled for June 2025. This sport motor yacht of 25.40 metres overall is conceived for those who cherish velocity, poise, and avant garde styling, blending svelte, athletic lines with cutting edge engineering.

Smartly classed just under 24 metres, the AB80 delivers superyacht stature while retaining the freedom and administrative simplicity of a smaller register. It is crafted for owners who prize independence, speed, and calm comfort at sea, offering the exhilaration of a high performance open yacht together with the refinement of a contemporary express cruiser.

The layout is thoughtfully adaptable, built to host lively gatherings as naturally as private moments. An opening roof above the saloon and full width sliding doors create a seamless dialogue between interior and exterior, allowing dining beneath the stars or an uninterrupted indoor outdoor living experience. Personalization is central to the yacht's identity, with the in house Centro Stile ready to tailor every finish, texture, and furnishing for a genuinely bespoke interior.

Above, the sundeck introduces an evocative "open roof" lounge concept — perfect for alfresco suppers beneath the night sky or, when desired, for secluded sunbathing in total privacy. Below decks, accommodation for up to four guest cabins includes a generous full beam owner's suite aft and a full beam VIP suite forward, with two flexible twins amidships. The innovative sliding bed system enables those twins to convert into doubles at the touch of a button, enhancing versatility for family and friends.

Performance is where the AB80 truly impresses, with top speeds in excess of 55 knots and a comfortable cruise around 45 knots. Nimble handling and shallow water capability make it ideal for island hopping day trips as well as

extended coastal passages, while efficient construction and propulsion keep fuel consumption notably low. A capacious stern garage stows two Jet Skis, launched effortlessly by a clever slide system — a definitive feature of a fast planing yacht designed for pure pleasure.

For added convenience and modern transaction options, this yacht can be purchased securely with cryptocurrency, accepting Bitcoin, USDT, ETH and other leading coins.

SPECIFICATIONS

Basic Information

Category:
Motor yachts

Year Built:
2025

Model Year:
2025

Country:
Italy

Dimensions

LOA:
83' 0" (25.40 m)

Beam:
21' 0" (6.50 m)

Min Draft:
4' 5" (1.35 m)

Max Draft:
4' 5" (1.35 m)

Speed, Capacities and Weight

Cruise Speed:
49 Knots (56.39 MPH)

Water Capacity:
528.34 Gallons

Max Speed:
54 Knots (62.14 MPH)

Fuel Capacity:
2377.55 Gallons

Accommodations

Sleeps:
5

Crew Berths:
1

Hull and Deck Information

Hull Material:

Fiberglass and Plastic Yachts

Hull Designer:

N/A

Deck Material:

Fiberglass

Interior Designer:

N/A

Hull Configuration:

N/A

Engine Information

Engines:

3

Engine Type:

Inboard

Manufacturer:

MAN

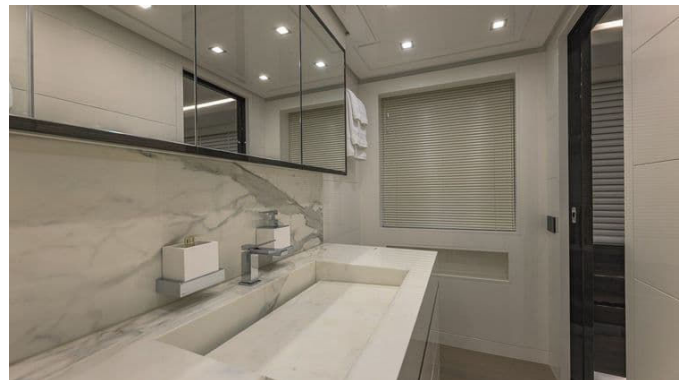
Fuel Type:

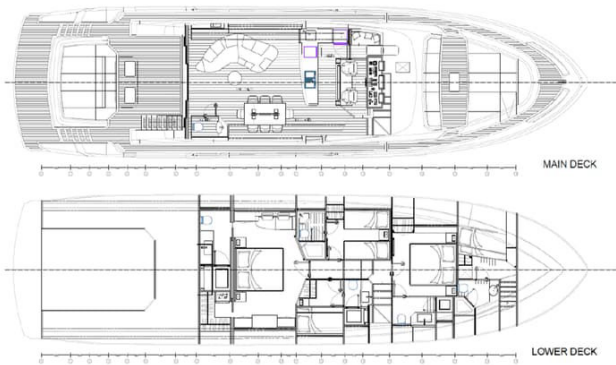
Diesel

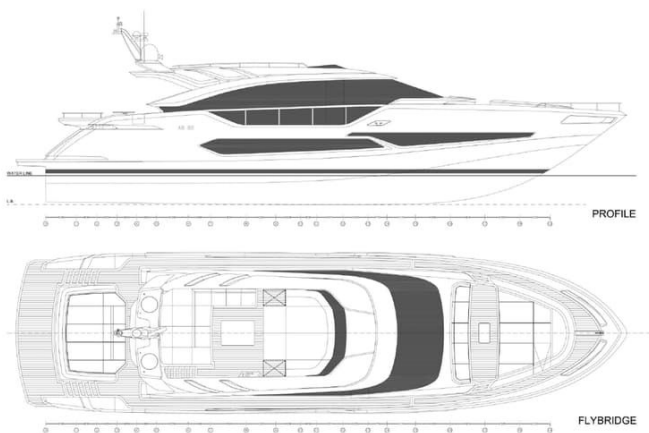
GALLERY















DETAILED DESCRIPTION

Main characteristics

At the core of this yacht's exhilarating performance lies a trio of MAN V12 2000 engines, each rated at 2000 hp (1471 kW at 2300 RPM), that combine brutal power with refined responsiveness, driving two MJP steerable waterjets and a central MJP booster to deliver razor sharp handling and spectacular acceleration. Electrical autonomy is secured by two KOHLER gensets at 32 kW each, configured for 240 V, single phase, 60 Hz operation, while onboard climate control is entrusted to a FRIGOMAR air conditioning system rated at 140,000 BTU to ensure impeccable comfort in the hottest conditions. Precision manoeuvring and effortless docking are provided by an electric Side Power bow thruster at 240 V, and the vessel's electrical architecture is specified for 240 V, bi phase, 60 Hz (USA), guaranteeing seamless compatibility and reliable operation wherever your voyages take you.

Accommodations

Thoughtfully conceived to balance privacy and sociability, the lower deck hosts a full beam owner's suite awash with natural light, a refined VIP cabin and two guest cabins each appointed with two beds, all finished to a standard that welcomes family and friends in uncompromised comfort. Crew operations are discrete yet efficient, with a dedicated crew cabin with two beds and a separate crew bathroom, while the guest experience is elevated by four guest bathrooms and a conveniently placed day head on the main deck to support effortless entertaining and day to day life onboard.

Additional information

The galley is appointed for serious culinary ambition, featuring a BORA extraction hood and a BORA cooking top that combines one 32 cm induction zone with a Teppan Yaki plate, supported by a MIELE 60 cm oven and a MIELE 45 cm dishwasher, all centered around a practical 40 × 40 cm sink and a LIEBHERR column fridge/freezer standing 177 cm tall; crew laundry is handled by one MIELE washer/dryer complemented by GE Appliances to keep service running smoothly. At the helm, the electronic navigation suite is engineered for clarity and confidence, with a SIMRAD 24" monitor accompanied by two 19" displays, the monitoring system assigned to one of the 19" units, a SIMRAD Halo 24 radar for long range awareness, a SIMRAD graphic echosounder and an AIRMAR transducer providing log, speed and temperature data, and command refined through a SIMRAD autopilot and SIMRAD VHF supported by two SIMRAD GPS antennas; optional enhancements include SIMRAD AIS and an AIRMAR weather station, and the flybridge may be fitted with an optional sundeck mini station equipped with an optional SIMRAD remote VHF handset and an optional IS42 4.1" multifunction colour display for data. Entertainment is seamless and immersive throughout: the owner's cabin features a SAMSUNG 43" LED Smart TV with HDMI and USB wall plate, native Netflix and Disney+ via Smart TV and Spotify through a Bluesound amplifier feeding two Dynaudio P4 W65 6.5" rectangular speakers, controlled by an APPLE iPad mini 6 64 GB Wi-Fi provisioned for Crestron and supported by an owner supplied TV receiver/decoder; the VIP cabin mirrors this specification with a SAMSUNG 32" Full HD Smart TV, identical streaming and amplification, two Dynaudio P4 W65 speakers and an APPLE iPad mini 6 64 GB Wi-Fi (Crestron), again with owner provided reception hardware. The two guest cabins are equipped respectively with a SAMSUNG 32" Full HD Smart TV to port and a SAMSUNG 24" Full HD Smart TV to starboard, each with HDMI and USB wall plates, streaming via Smart TV, Spotify through Bluesound, two Dynaudio P4 W65 6.5" speakers,

an APPLE iPad mini 6 64 GB Wi-Fi configured for Crestron and owner-supplied TV receivers/decoders. The main salon presents a cinematic SAMSUNG 65" 4K Smart TV with HDMI and USB wall plate, the same premium streaming suite via Bluesound amplification, five Dynaudio P4 W65 6.5" rectangular speakers and a JL Audio Home subwoofer 8 for authoritative low end, all controlled with an APPLE iPad mini 6 64 GB Wi-Fi (Crestron) and supported by an owner-supplied decoder. Outdoors, audio is distributed across aft deck, bow and flybridge by JL Audio waterproof 770 Luxe 7.7" speakers arranged in a four-speaker aft deck, two-speaker bow and four-speaker sun deck layout driven by a single amplifier with two channels per area and offering native AirPlay 2 and Spotify Connect streaming; a Party Mode function can replicate main salon settings to unify aft deck, bow and flybridge into a single entertainment environment.

Optional list included

The yacht is delivered with an extensive suite of premium options designed to raise capability, comfort and peace of mind. Classification is to R.I.Na. – C HULL • MACH Y for Unrestricted Navigation (Pleasure). Power management incorporates Seamless Transfer “No Power blackouts” smart technology to prevent interruptions when switching between genset power and shore supply, together with a gensets parallel system for resilient load sharing. Seakeeper model 18 gyroscopic stabilizers provide exceptional roll reduction both at anchor (“zero speed”) and underway, while the navigation and awareness package adds AIS and a weather station, a full redundant monitoring system in the crew area and an aft third control station for precise low-speed handling. Tender and toys are accommodated by a stern garage with haulage and launching system for tender and jet ski, and the transom is enhanced by four white underwater lights. Endurance is elevated with an IDROMAR watermaker rated at 180 L/h in place of the standard 130 L/h.

Privacy and atmosphere are improved by electric blind curtains in the salon and across lower deck accommodations (owner, VIP and guests), plus electric blackout rollers in the master and lower deck cabins. Safety and practicality are addressed with porthole sensors, outdoor awnings on aft and bow with carbon fibre poles and a micro perforated technical fabric tent, and tropicalized air conditioning at 140,000 Btu/h specification rather than the standard 100,000 Btu/h. The yacht is pre wired for a night vision camera (predisposition only) and includes a convenient day head in the salon and a mini pilot station on the sundeck. Finishing touches comprise a stainless steel rub rail, a 40 kVA frequency converter and an external aft cockpit table with electric up/down mechanism, complemented by dark or metallic paint and elegant teak decking on the sun deck. Beach club comforts extend to a plug in carbon fiber shower in the beach area and an additional 45 L boiler, while an air compressor supplies three connection points (one aft, one at the bow and one in the engine room). Side decks are bordered by glass handrails set in a polished stainless steel perimetral frame for a luminous contemporary profile. The onboard IT and Wi-Fi backbone is curated to professional standards with one Peplink MAX HD1 Dome Pro 5G router with integrated 4G/5G and Wi-Fi antennas, one Ubiquiti Dream Machine Pro router acting as wireless controller and firewall, one Ubiquiti 48 port PoE switch for physical Ethernet connections and four Ubiquiti UniFi 6 Long Range 4800 Mbit/s PoE access points distributed across all decks, together with predisposition for a Starlink Maritime antenna. Security and visibility are covered by a comprehensive CCTV system including three Lilin Z5R6422XR 2 megapixel outdoor dome cameras with IR LED, one Lilin PZD6422EX mini PTZ (no IR) 2 megapixel camera in the engine room, and one Lilin NVR6104E 4 channel PoE standalone network video recorder. For any additional bespoke features or customisation, feasibility will be assessed and a formal quotation provided.

CONTACTS

Shestakov Yacht Sales is a brokerage company specializing in the sale and service of yachts worldwide. The company offers services for buying and selling both new and used motor yachts, sailing vessels, and luxury superyachts. They also provide yacht registration, insurance, technical maintenance, crew selection, and charter organization services across the U.S., Canada, Latin America, the Caribbean, and the Bahamas.

The founder and lead broker of the company is Andrey Shestakov, a licensed and certified expert with extensive experience in marine engineering and shipbuilding.

The company has an extensive network of partnerships with major yacht manufacturers worldwide and provides services in multiple languages, including Russian, Ukrainian, Spanish, and English. The office is in Dania Beach, Florida, USA.

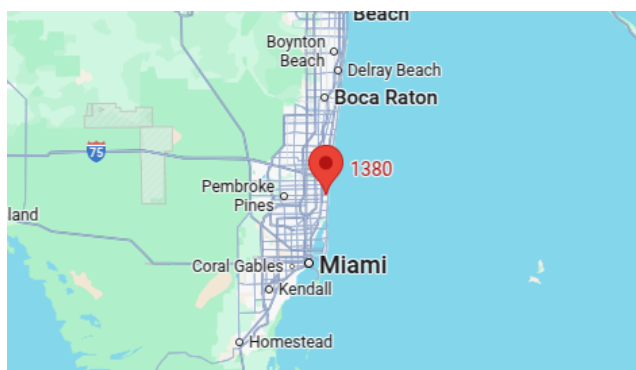
For more information and to view available yachts, you can visit the company's official website: <https://shestakovyachtsales.com>

Contact details

Phone: +1(954)274-4435

Email: andrey@shestakovyachtsales.com

Address



1380 Weeping Willow Way, Hollywood,
Florida 33019