

## LA BELLA VITA - FERRETTI YACHTS



**Builder:** [Ferretti Yachts](#)

**LOA:** 83' 0" (25.30 m)

**Year Built:** 2006

**Beam:** 21' 0" (6.40 m)

**Model:** 830

**Max Draft:** 20' 3" (6.17 m)

**Price:** \$2,330,000 USD Subject to change.

**Cruising Speed:** 12.50 Knots (14.38 MPH)

[See full listing on our website](#)

**Location:** Fort Lauderdale, United States

**Max Speed:** 28 Knots (32.22 MPH)

---

# TABLE OF CONTENTS

---

<b>OVERVIEW .....</b>	<b>3</b>
<b>SPECIFICATIONS .....</b>	<b>4</b>
Basic Information .....	4
Dimensions .....	4
Speed, Capacities and Weight .....	4
Accommodations .....	4
Hull and Deck Information .....	5
Engine Information .....	5
<b>GALLERY .....</b>	<b>6</b>
<b>DETAILED DESCRIPTION .....</b>	<b>33</b>
<b>CONTACTS .....</b>	<b>46</b>

## OVERVIEW

---

Generous aft cockpit and expansive flybridge, bespoke cabana at the transom and swim platform, plus a broad foredeck sunpad with full walkaround decks.

La Bella Vita underwent a comprehensive refit late 2021 into 2022, featuring a complete Garmin navigation suite, a redesigned galley with new appliances, upgraded A/C systems, and a refreshed interior with new flooring, headliner, cabinetry, and soft goods. Details appear below.

A genuinely turnkey luxury motor yacht, offered only because the owner plans to move up to a larger cruising yacht soon.

Northrop and Johnson is delighted to assist with your acquisition of this yacht. This vessel is centrally offered by Downey Yacht Sales. Provided as a courtesy by this broker/dealer to its clients, it is not intended to constitute direct representation of any specific vessel by this firm.

# SPECIFICATIONS

---

## Basic Information

---

**Model Year:**  
2006

**Country:**  
United States

**Year Built:**  
2006

## Dimensions

---

**LOA:**  
83' 0" (25.30 m)

**Max Draft:**  
20' 3" (6.17 m)

**Beam:**  
21' 0" (6.40 m)

## Speed, Capacities and Weight

---

**Cruise Speed:**  
12.50 Knots (14.38 MPH)

**Water Capacity:**  
343 Gallons

**Max Speed:**  
28 Knots (32.22 MPH)

**Fuel Capacity:**  
2008 Gallons

## Accommodations

---

**Total Heads:**  
5

## Hull and Deck Information

---

**Hull Material:**

Fiberglass and Plastic Yachts

**Hull Designer:**

N/A

**Deck Material:**

Fiberglass

**Interior Designer:**

N/A

**Hull Configuration:**

N/A

## Engine Information

---

**Engines:**

2

**Engine Type:**

Inboard

**Manufacturer:**

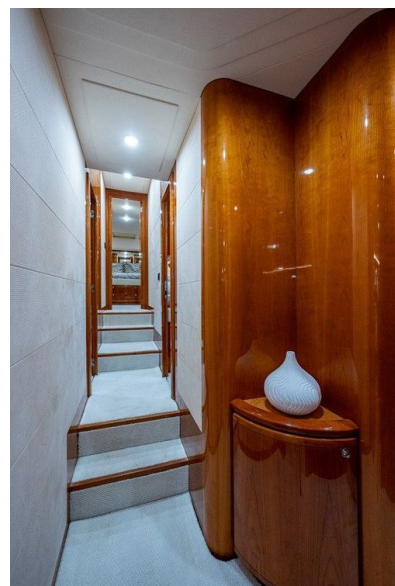
MTU

**Fuel Type:**

Diesel

# GALLERY



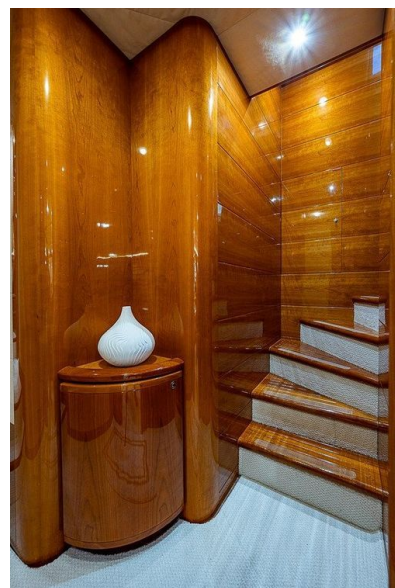
















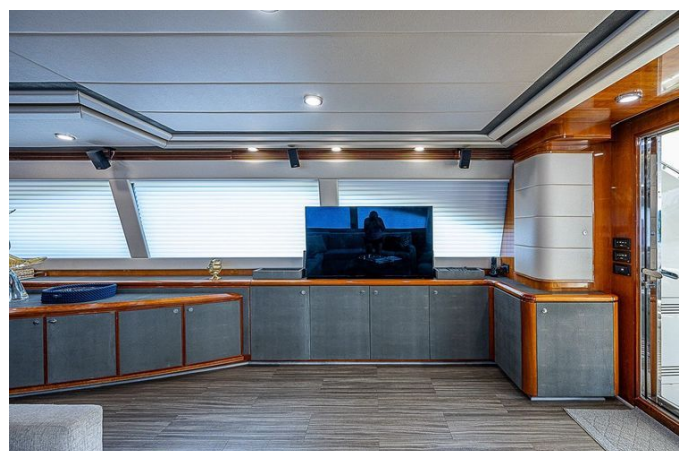




































---

# DETAILED DESCRIPTION

---

## Additional description

---

The expansive lounge, measuring 4.5 x 6 metres, is anchored by an elegant L-shaped sofa complemented by a central table and a refined side table, while to starboard a conversation nook features two small armchairs set before the display that conceals the pop-up plasma-screen TV. Designed for convivial gatherings, the lounge comfortably seats eight people for dining, and the crew enjoys swift access to the kitchen via an external gangway. A thoughtfully positioned day head subtly delineates the lounge from the bridge, which now presents a new, much more cosy layout. Adjacent to the bridge, a comfortable and spacious diner for two people with a map table encourages shared navigation and effortless passage planning.

Below deck, the master cabin is situated amidships and arranged beam-wise for a heightened sense of volume. Its bedhead is centered beneath a window that frames an inspiring sea view, while the suite also includes two walk-in wardrobes, a women's vanity alongside a chaise-longue, and two communicating heads with dual access. A central corridor leads to the two guest cabins, each appointed with twin beds and its own head with shower. Continuing towards the bows, the journey concludes in a spacious VIP cabin complete with a double bed and head.

## Additional description

---

The flybridge can be fitted with a jacuzzi, while the roll bar is turned towards the stern rather than the bows to create a shaded area over the sofa during the hottest part of the day. For total comfort and extra privacy, the engine-room is located between the cabins and the crew's quarters, which are

accessible from outside; the engines are set along the axis and can be directly accessed by the crew. The interposition of the diesel tank guarantees silent engines, and its larger capacity allows more time at sea. Finally, the large cockpit measuring 3.5 x 4.5 metres accommodates a table for eight, and the garage below, with a door that opens down to a sea-level platform, is perfect to set as a beach club.

## Refit summary 2021/2022

---

An extensive 2021/2022 refit elevated this yacht with a new Garmin electronics package serving both the pilothouse and flybridge. The interior was comprehensively renewed with new flooring, wall coverings, cabinetry, and headliners, along with custom remodeling that included the closure inside the hatch to the flybridge to accommodate a custom bar area; new soft goods, new window treatments, and new tables, countertops, TVs, and stereos completed the transformation. The galley received a full makeover with all new appliances, flooring, and countertops. Exterior comfort was refined with new cushions and new canvas covers for the flybridge, aft deck, and foredeck, complemented by a new bimini top with a three-sided enclosure. A new cabana room was created in the aft garage area, appointed with a large screen TV, ice maker, refrigerator, sofa, chairs, and stereo speakers. Below the waterline, the props and shafts were serviced, fresh bottom paint and zincs were applied, and new underwater lights were installed. Climate control was enhanced with an upgraded A/C system featuring two new Aqua Air A/C chillers in 2023, and the A/C ducts were professionally cleaned. Freshwater and comfort systems benefited from a new water maker and a new hot water heater. Indoor air quality was further improved with Dometic Breathe Easy in-duct air purifiers with Black Light/UV technology.

## Layout & accommodations

---

Beginning aft, a hydraulic passerelle extends smoothly from a discreet pocket at the starboard stern, while the hydraulic transom lowers to reveal an inviting “cabana” at water level outfitted with a large-screen TV, stereo system, refrigerator, ice maker, sofa, and chairs that can be arranged on the swim platform. Underwater lights bathe this waterfront lounge in a warm, alluring glow, and two 100-amp power cords are conveniently deployed via a Cable Master System on the portside steps. Port and starboard teak-tread steps rise to the teak aft deck, where flush compartments to either side conceal mooring cleats and warping winches, with dedicated stowage for mooring lines and towing harnesses. The aft deck revolves around a handsome table set before a forward-facing bench for four, with space for another four or five chairs to accommodate a total of eight or nine. Just forward to port, an overhead-mounted large-screen TV faces the seating and the discreet entrance to the crew quarters, while to starboard, teak-tread steps lead to the flybridge with an ice maker tucked beneath. Wide walkaround side decks to port and starboard provide easy access to the amidships doors on both sides and onward to the foredeck. From the aft deck, broad sliding stainless-steel and glass doors open to a refined salon where, to port, an occasional chair, side table, custom ottoman, and an L-shaped sofa create a welcoming conversation area. To starboard, an under-counter refrigerator, bottle storage cabinet, large-screen TV on a lift, stereo system, satellite TV boxes, and generous storage are thoughtfully integrated, all set upon elegant faux-wood flooring that continues seamlessly through the salon, galley, and pilothouse. Advancing forward, custom outboard cabinetry to port complements a round custom dining table on the centerline with six chairs, while to starboard a bespoke bar area showcases an under-counter ice maker, wine cooler, and deluxe coffee maker within tailored joinery; formerly the flybridge stairwell, this space has been professionally enclosed to enhance the interior’s flow and volume. Just

ahead to port, the galley has been completely renewed with all-new appliances, fresh flooring, and sleek counters, and offers a forward portside door to the side deck, followed by a pocket door granting entry to the pilothouse. Opposite the galley to starboard, another side-deck door sits beside the stairwell leading down to the master and guest staterooms. Further forward, up two steps, the pilothouse presents a commanding helm with a full suite of electronics new in 2022 and a comfortable dinette whose table lowers to create a single berth, with a pocket door allowing this space to be secluded from the salon when desired.

## Pilothouse

---

Command with confidence from a helm anchored by three twelve-inch Garmin GPSMAP 1243 touch-screen displays, new in 2022, complemented by an Icom M-506 VHF and an Icom Command mic repeater, also new in 2022, and a Garmin autopilot installed the same year. Essential readouts are close at hand with instrument gauges for temperature, RPMs, oil pressure, and voltage, alongside a compass and a console panel featuring a padded dash finished in sleek black Lexan. Fine-tune handling with an American bow thruster with toggle controls, trim tab controls, MTU gear and throttle shifters, and the precision of a Sea Keeper gyro stabilizer with zero-speed control, all under the watch of a Fireboy engine shutdown system, a Ferretti ship system monitor, and a Jabsco spotlight. Comfort is assured by an air-conditioning system new in 2022, while a helm chair with hydraulic controls and Gallin windshield washers and wiper controls serving three wipers/washers enhance visibility and ergonomics.

Opposite the helm, a U-shaped dinette new in 2022 invites relaxed passage-making with a teak-trimmed table featuring a burlwood inset; the table drops down flush with the seat cushions to convert into a sleep area, with ample storage beneath the seats and behind the cushions and a digital

safe mounted under the dinette seat. Connectivity and onboard productivity are elevated by a wall-mounted TV/computer monitor and a color printer/copier/scanner, both new in 2022, supported by a Garmin NMEA 2000 GPS antenna added the same year. Fresh wood laminate flooring and a new headliner, both installed in 2022, pair with an exterior black mesh window cover for refined ambiance, while a fire extinguisher stands ready for peace of mind.

## Salon

---

The salon presents a luminous retreat beneath a custom headliner new in 2022, with soft LED overhead lighting also new in 2022 enhancing every detail. Entertaining is elevated by a Zephyr wine cooler new in 2022, an Isotherm refrigerator, and a U Line ice maker new in 2022, all served from a custom bar area with a Jura gourmet coffee machine and dedicated glass and cup storage, new in 2022. Enjoy cinematic moments with a large screen TV on a lift new in 2022, powered by a Pioneer stereo amplifier new in 2022 and enriched by five Bose speakers. Conversation flows easily across an L shaped sofa with storage underneath new in 2022, an upholstered chair new in 2022, and a custom ottoman with storage space new in 2022, gathered around a circular frosted glass dining table with a Lazy Susan center insert new in 2022 and six upholstered chairs new in 2022. Hunter Douglas electric privacy shades to port and starboard new in 2022 pair elegantly with manual salon door drapes new in 2022, while wood laminate flooring new in 2022 provides a warm, seamless foundation. Thoughtful storage areas for crockery, flatware, and glasses keep the space impeccably organized, complemented by assorted designer throw pillows and cushions new in 2022 for a refined finishing touch.

## Galley

---

Thoughtfully positioned for effortless movement and entertaining, the galley opens directly to the forward salon area, connects forward via a pocket door to the pilothouse, and offers an access door to the port side deck.

Comprehensive culinary upgrades from 2022 include a Panasonic stainless-steel microwave oven, a Miele 4-burner stove top, a Kitchen Aide stainless-steel oven, and a Bosch exhaust fan over the cooktop. A Bosch stainless-steel refrigerator/freezer provides a side-by-side pull-out refrigerator drawer with a pull-out freezer compartment below, also new in 2022. Prep and presentation are elevated by white countertops with tile accents, set above a large-capacity stainless-steel sink and complemented by a Badger In garbage disposal (1/2 HP), all new in 2022, while wood laminate flooring, likewise new in 2022, adds warmth and durability underfoot. Storage is abundant with ample cabinet and drawer spaces and a pull-out pantry compartment to keep provisions organized. Climate comfort is at your fingertips with an A/C control pad, and safety is enhanced by a fire extinguisher discreetly located under the sink.

## Master stateroom - full beam amidship

---

Spanning the full beam amidship, the master stateroom centers on a king berth facing to port, offering spectacular views through the hull window. The ensuite head indulges with an oversized shower equipped with dual rainfall showerheads and two hand-held nozzles, enhanced by large windows at the waterline with a privacy screen. A well-appointed vanity features two sinks, a mirror, and excellent storage spaces, joined by a generous closet with ample drawer and storage capacity. Entertainment is curated by a large flat-screen TV with Direct TV, new in 2022, and a Bose stereo system. A comfortable lounge area with desk and chair provides a private retreat, while the carpet, new in

2022, and a new 2022 headliner complete the refined finish.

## **VIP stateroom - forward**

---

This inviting forward VIP stateroom presents a centerline queen berth with convenient storage beneath, enriched by a Bose stereo system for immersive sound. Recent refinements include a new headliner and Roman blinds completed in 2023, complemented by a flat-screen TV with DIRECTV, new in 2022, and carpet installed in 2022. An ensuite head with shower completes this private retreat, blending comfort and practicality with a refined finish.

## **Port guest stateroom**

---

The port guest stateroom welcomes with twin side-by-side berths and an ensuite head with shower, complemented by entertainment features that include a flat-screen TV with Direct TV, new in 2022, and a Bose stereo system. Fresh refinements elevate the ambiance with a new headliner and new Roman blinds added in 2023, while the carpet was renewed in 2022. Thoughtful amenities such as ample storage drawers and a nightstand provide convenient, well-organized comfort for extended stays.

## **Starboard guest stateroom**

---

Thoughtfully appointed, the starboard guest stateroom features twin side-by-side berths with an optional Pullman berth and an ensuite head with shower. Entertainment is provided by a flat screen TV with Direct TV, new in 2022, complemented by a Bose stereo system. Fresh finishes enhance the ambiance with a new headliner in 2023, new Roman blinds in 2023, and carpet renewed in 2022, while ample storage drawers and a nightstand add practical convenience.

## Flybridge

---

Command the horizon from a flybridge engineered for total confidence and indulgence. Navigation and situational awareness are anchored by two Garmin 8616 GPSMAP 16-inch touch screen displays with depth, speed, radar, and TV, new late 2022, complemented by a Garmin 8600 Series HDMI cable, a Garmin NMEA with Audio 8516 cable, and a Garmin USB card reader, all new 2022. Long-range clarity arrives via the Garmin 604xHD long range radar, new 2022, and Sonar GSD 26, while communications come through two ICOM M506 VHF radios with Command Mic IV handsets, one a repeater. Garmin GXM54 Sat/Weather with Sirius XM weather overlay, new 2022, pairs with Garmin AIS and the Garmin Blackbox AIS 800, both new 2022, and a Garmin auto pilot, new 2022. Vigilance is enhanced by Garmin GC 200 marine IP cameras covering the transom tender view and engine room port and starboard side views, new 2022.

Entertainment unfolds effortlessly with a Fusion touch screen stereo MS-RA770, new 2022, Sirius XM, new 2022, and Fusion XM satellite radio feeding two JL Audio M6-770X-C-GwGw speakers, two JL Audio M6-101B-C-GwGw-4 subwoofers, and a JL Audio five-channel marine amp stereo zoned throughout with four control panels. Television is delivered by the KVH TV-6 system and Direct TV satellite service for all TVs, plus Direct TV reception displayed on the Garmin GPS screens, seven boxes total. A 50-inch TV mounted on a custom stainless-steel bracket, new 2022, ensures cinema under the sky.

Leisure is centered around a Balboa Jacuzzi with hard cover and cushions, with hidden storage areas surrounding the spa, plus a hot-and-cold handheld shower by the Jacuzzi. Grilling options include an electric grill top mounted in a cabinet and a Weber propane grill, while a starboard-side cabinet presents a generous prep area with an electric BBQ grill, sink with hot and cold water, refrigerator underneath, and three storage cabinets. A bimini top with

three-sided enclosure, new 2022, shades a custom sun pad area at the front of the flybridge on the starboard side with cushions and storage beneath, new 2022. A U-shaped dinette with new table and new cushions with storage beneath, new 2022, pairs with three chairs, new 2022, to create a convivial open-air salon.

The helm is equipped with MTU gear and throttle controls, ABT Trac bow thruster controls, an electric up/down electronics console, main engine RPM and temperature gauges, Jabsco spotlight control, air horn, trim tab controls, an instrument panel for light switches and anchor switches with up and down for both anchors, and arch lighting. The helm seat with cushions conceals a storage area that houses an electronics battery, a Master Volt battery charger, and a Direct TV receiver box. A hatch with teak steps provides a graceful descent to the aft deck, while fiberglass non-skid decks assure secure footing throughout.

Safety and utility are paramount with a Besenzoni dinghy davit (24V, 600 KG/1,322.77Lbs.)—Rib Dinghy not included—two Sea Safe Datrex eight-person life rafts, and an Ocean Signal Class-2 EPIRB, delivering genuine blue-water peace of mind.

## Electrical system

---

The yacht's robust electrical architecture delivers dependable 12/24 V DC service alongside 120/240 V AC at 60 Hz. Power storage was refreshed in late 2022 with ten Lifeline GPL-4DA and six Lifeline GPL-4DL batteries, ensuring deep reserves and reliable starts. Dockside connectivity is effortless via two 100 Amp single-phase shore power cables routed through Glendinning Cable Master reels positioned in the aft port transom area. Voltage stability is managed by two Acme general-purpose shore power transformers with a boost feature, while system integrity is further protected by two Gail Safe Max galvanic isolators.

## Engine room and mechanical

---

Commanding performance begins with two Marine Diesel 16V2000 MTU engines, Model R160-7MI-L, governed by MTU electronic throttle and gear controls positioned at the pilothouse, flybridge, and aft deck stations. Power flows through ZF Direct transmissions, model 255 A, featuring a precise 2.536:1 ratio, while provenance is confirmed by port serial number 5001 5970 and starboard serial number 5001 6046. Electrical confidence comes from two Kohler 23KW diesel generators, both model 23EOZD in sound shields: the lower generator number one shows 3367 hours as of 04/23 with serial number 2034116, and the upper generator number two shows 1766 hours as of 04/23 with serial number 2034115. A Sea R.O. water maker delivering 48 GPH was installed new in 2022, maneuverability is assured by an ABT bow thruster, and comfort underway or at anchor is elevated by a Sea Keeper Model #26 zero speed stabilizer. The power hydraulic steering system benefits from a new hydraulic steering pump fitted in 2022, while onboard amenities include six 24V Tecma fixtures and two hot water tanks, and fuel quality is protected by four remote-mounted Separ 2000/10 UMS fuel/water separators with secondary bowls.

## Aft deck

---

Teak decking sets an inviting tone for alfresco living, centered around a dining table on dual stainless steel pedestals, new in 2022, complemented by five new 2022 chairs and a bench seat with new 2022 cushions. Entertainment comes courtesy of an overhead-mounted TV, new in 2022, while a removable aft deck sun awning, also new in 2022, with optional stainless steel poles extends shade to cover the cabana room area. Practical amenities include a fiberglass molded sink compartment to starboard of the bench seating area and a fiberglass molded storage compartment to port. After dusk, an LED spreader light bar for

transom lighting, new in 2022, enhances both ambiance and visibility, with sound managed by Fusion audio controls driving two speakers. For confident close-quarters handling, the aft deck docking station integrates MTU controls, a bow thruster toggle, and main engine on/off buttons, and a Raritan ice maker adds effortless refreshment.

## Miscellaneous deck and hull

---

Commanding ground tackle begins with two 50 kg Bruce-type anchors with galvanized chain, led through dual stainless-steel anchor chutes with bow rollers and serviced by a fresh-water anchor washdown system. The port anchor carries 225' of galvanized chain and the starboard anchor carries 325', with clear chain markings at 50' all red, 100' all yellow, 150' all white, 200' all red/white, and 300' all red/yellow/white. On the foredeck, two 24-volt Lofrans windlasses, each equipped with wildcats and capstan drums, ensure smooth, reliable deployment and retrieval.

Dockside operations are made effortless by two 24-volt Lofrans snubbing winches—one port and one starboard—in the aft deck area, complemented by ample stainless-steel chocks and cleats. Underwater lights installed new in 2021 enhance the yacht's presence at anchor, while a 600 kg Besenzoni electric/hydraulic davit stands ready for tender handling. The vessel is fully outfitted with fenders and mooring lines, two boarding gates—one to port and one to starboard—and one set of boarding steps. A Besenzoni hydraulic passerelle graces the starboard side of the transom, and a Besenzoni hydraulic swim ladder is positioned to port on the swim platform.

## Safety

---

Safety is comprehensively addressed with two Datrex Sea Safe eight-man valise life rafts certified in 2023, complemented by twenty USCG life jackets

and two USCG Type IV throwable devices. Fire protection is robust, featuring nine fire extinguishers, three Fire Boy clean agent HFC-227 extinguishing systems—two serving the engine room and one dedicated to the generator space—and a Sea Fire clean agent FM-200 extinguisher system installed in the electrical panel within the crew companionway. An Ocean Signal Class-2 EPIRB stands ready for rapid emergency alerting, while assorted smoke and CO2 alarms provide vigilant onboard monitoring. Bilge security is equally thorough, with twenty-four-volt submersible bilge pumps offering automatic and manual operation throughout the vessel, crash suction valves on the main engine raw-water pick-ups, and a dedicated twenty-four-volt Gianneschi bilge pump with manifold and pick-ups serving various bilge compartments. High-water protection includes bilge high-water alarms with both audible and visual indications, as well as a dedicated audible high-water bilge alarm positioned in the supply locker on the starboard-side walkway near the aft deck. Clear signaling and compliance are ensured by USCG-approved navigational lights, a powerful trumpet horn, and a chromed ship's bell prominently mounted on the foredeck.

## Salesman's remarks

---

LA BELLA VITA is presented in excellent condition, distinguished by numerous new and upgraded features as evidenced by the refit outlined above. This opportunity arises solely from the owner's decision to move up to a larger vessel.

## Exclusions and disclaimer

---

All particulars of this vessel are offered by the company in good faith; however, neither the accuracy of this information nor the condition of the vessel is guaranteed or warranted. Prospective buyers should instruct their agents or

surveyors to investigate any details they wish to have validated, and all information should be verified by the buyer and his surveyor prior to acceptance. Engine and generator hours reflect the date of listing and are provided by the vessel owner for information purposes only. This vessel is offered subject to prior sale, price change, or withdrawal without notice.

# CONTACTS

---

Shestakov Yacht Sales is a brokerage company specializing in the sale and service of yachts worldwide. The company offers services for buying and selling both new and used motor yachts, sailing vessels, and luxury superyachts. They also provide yacht registration, insurance, technical maintenance, crew selection, and charter organization services across the U.S., Canada, Latin America, the Caribbean, and the Bahamas.

The founder and lead broker of the company is Andrey Shestakov, a licensed and certified expert with extensive experience in marine engineering and shipbuilding.

The company has an extensive network of partnerships with major yacht manufacturers worldwide and provides services in multiple languages, including Russian, Ukrainian, Spanish, and English. The office is in Dania Beach, Florida, USA.

For more information and to view available yachts, you can visit the company's official website: <https://shestakovyachtsales.com>

## Contact details

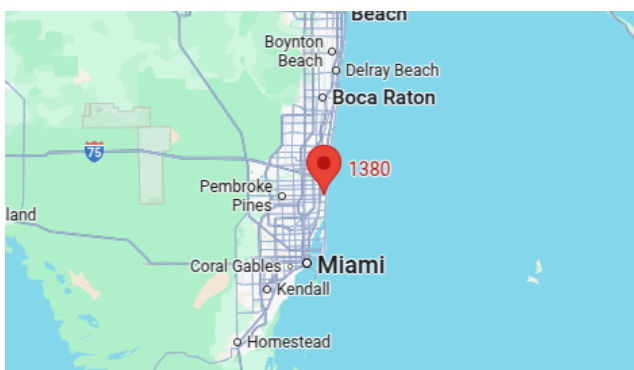
---

**Phone:** +1(954)274-4435

**Email:** [andrey@shestakovyachtsales.com](mailto:andrey@shestakovyachtsales.com)

## Address

---



1380 Weeping Willow Way, Hollywood,  
Florida 33019