



SHESTAKOV

Yacht Sales

LA BELLA VITA - FERRETTI YACHTS



Builder: [Ferretti Yachts](#)

LOA: 83' 0" (25.30 m)

Year Built: 2006

Beam: 21' 0" (6.40 m)

Model: 830

Max Draft: 20' 3" (6.17 m)

Price: \$2,100,000 USD Subject to change.

Cruising Speed: 12.50 Knots (14.38 MPH)

[See full listing on our website](#)

Location: Miami, United States

Max Speed: 28 Knots (32.22 MPH)

If you would like to buy a yacht **LA BELLA VITA - FERRETTI YACHTS** or would like help answering any questions concerning purchasing, selling, or chartering a yacht, please call **+1(954)274-4435** or click here on <https://shestakovyachtsales.com>

TABLE OF CONTENTS

OVERVIEW	3
SPECIFICATIONS	4
Basic Information	4
Dimensions	4
Speed, Capacities and Weight	4
Accommodations	4
Hull and Deck Information	5
Engine Information	5
GALLERY	6
DETAILED DESCRIPTION	16
CONTACTS	25

OVERVIEW

LA BELLA VITA presents as a yacht that has been meticulously maintained and thoughtfully modernized, most notably through an extensive 2021–2022 refit that installed a complete Garmin navigation package, fully renewed the interior and rebuilt the galley. Since that major program she has continued to receive targeted enhancements, including Starlink internet capability, in-duct air sanitization, and ongoing mechanical and cosmetic work that preserve her in turnkey condition.

A standout feature is the ingeniously designed aft beach club: with the touch of a button the transom lowers and the garage unfolds to disclose a private waterside lounge outfitted with a flat-screen TV, refrigerator, ice maker, generous seating and striking underwater lighting. This level of aft-deck theatre, more commonly found on much newer and larger yachts, elevates her day-boat practicality while delivering a superyacht-style guest experience.

Accommodation is arranged across four staterooms for up to eight guests, centered on a full beam owner's suite that enjoys two en-suite baths, complemented by a forward VIP and two mirrored guest cabins. Separate crew quarters sleep three comfortably, ensuring professional service and privacy for owners and guests.

Propulsion is provided by twin MTU 16V2000 diesel engines, enabling a top speed of 28 knots and an economical cruise at 12.5 knots. Onboard systems are supported by twin 23 kW Kohler generators and a SeaKeeper 26 gyro stabilizer, offering dependable power and exceptional underway comfort. Offered only because her owners are upgrading to a larger yacht, this is a rare opportunity to acquire a carefully kept, modernized cruising yacht ready for immediate use.

SPECIFICATIONS

Basic Information

Model Year:
2006

Country:
United States

Year Built:
2006

Dimensions

LOA:
83' 0" (25.30 m)

Max Draft:
20' 3" (6.17 m)

Beam:
21' 0" (6.40 m)

Speed, Capacities and Weight

Cruise Speed:
12.50 Knots (14.38 MPH)

Water Capacity:
343 Gallons

Max Speed:
28 Knots (32.22 MPH)

Fuel Capacity:
2000 Gallons

Accommodations

Total Heads:
5

Hull and Deck Information

Hull Material:

Fiberglass and Plastic Yachts

Hull Designer:

N/A

Deck Material:

Fiberglass

Interior Designer:

N/A

Hull Configuration:

N/A

Engine Information

Engines:

2

Engine Type:

Inboard

Manufacturer:

MTU

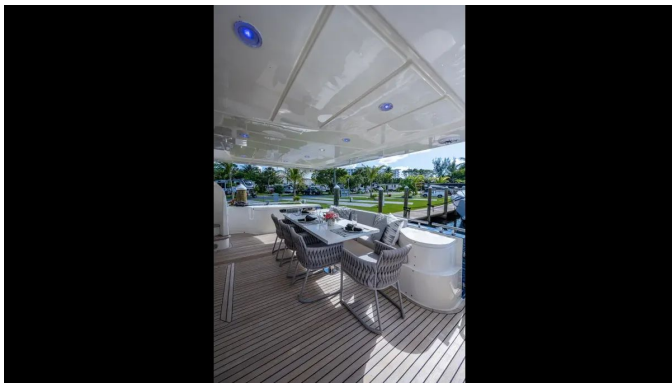
Fuel Type:

Diesel

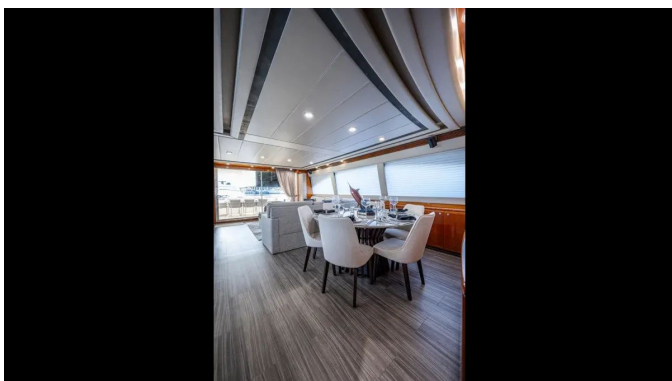
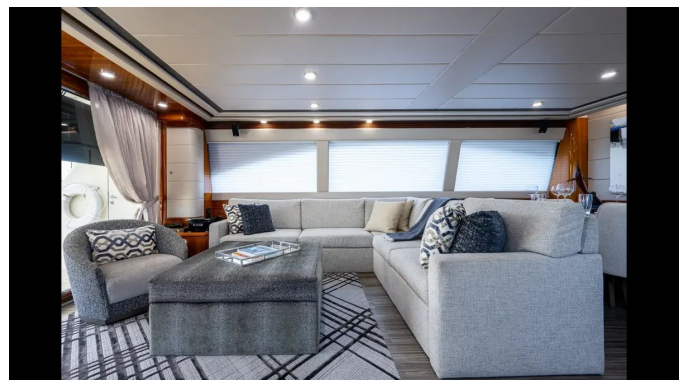
GALLERY

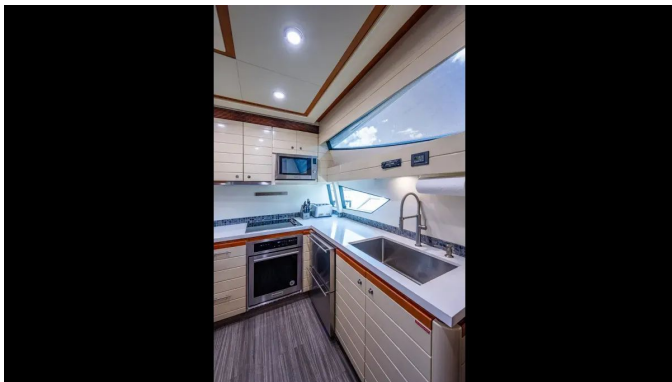
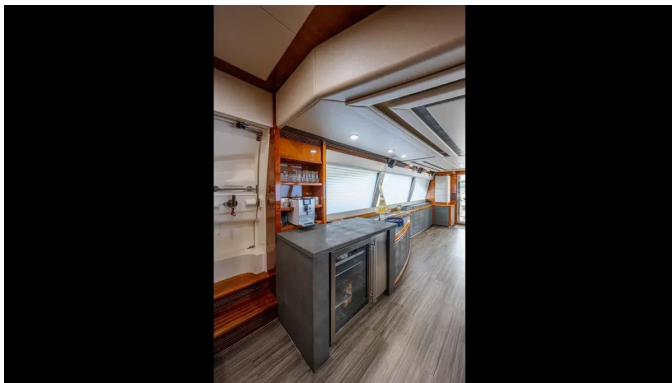
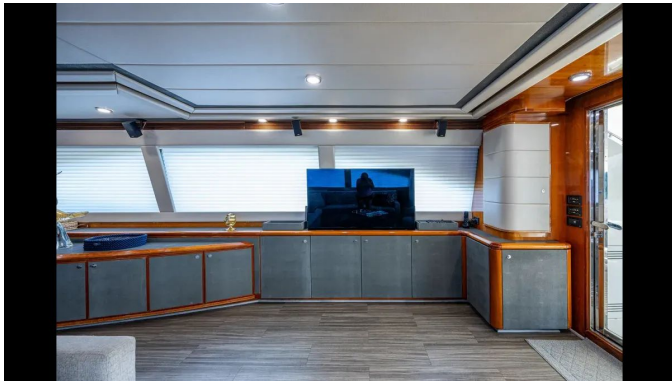






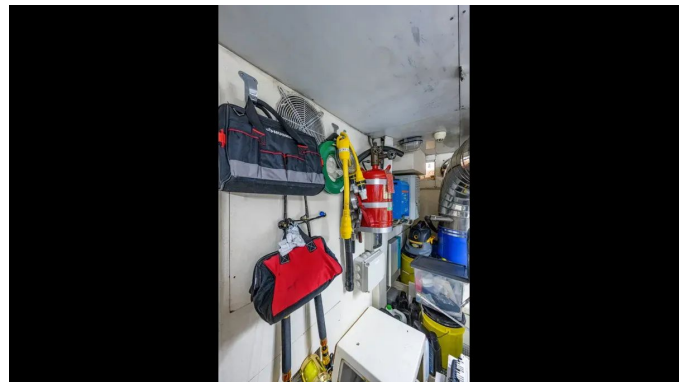


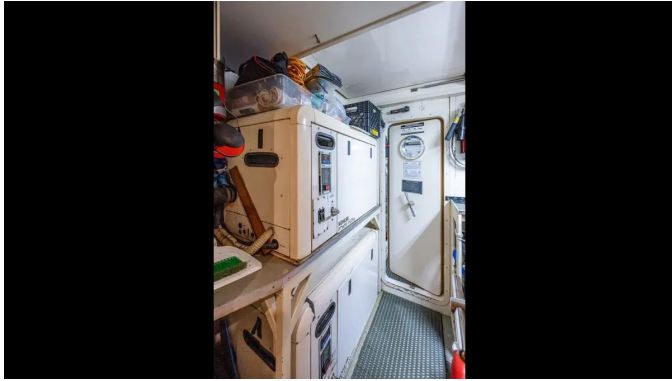












DETAILED DESCRIPTION

Refit & upgrades - 2021-2026

Between 2021 and 2022 the yacht received an extensive refurbishment, beginning with the installation of a full Garmin electronics suite throughout both the pilothouse and flybridge. The interior was entirely renewed, with new flooring, headliners, custom cabinetry, upgraded soft goods and refined window treatments, while the galley was rebuilt from the keel up with all new appliances, countertops and flooring. On deck comfort was elevated with fresh cushions and canvas covers for the flybridge, aft and foredeck, and a new Bimini with a three sided enclosure was fitted. The former flybridge stairway was professionally closed in and reimagined as a bespoke bar area complete with ice maker, wine cooler and coffee machine. A versatile cabana room was created in the aft garage, appointed with a television, refrigerator, ice maker, sofa and seating at water level to enhance dayboat-style living. Mechanical and underwater systems were serviced and upgraded, including attention to props and shafts, bottom paint and zincs, the addition of new underwater lighting, installation of a Sea R.O. water maker rated at 48 gph, new hot water heaters and a new hydraulic steering pump.

Upgrades continued in 2023 with the addition of two new Aqua Air A/C chillers and refreshed headliners and Roman blinds in the VIP and guest staterooms. Electrical reserve and reliability were strengthened with a new house bank comprised of ten Lifeline GPL 4DA and six GPL 4DL batteries. The A/C ducting was professionally cleaned and Dometic Breathe Easy UV in duct air purifiers were fitted to raise onboard air quality to a higher standard.

In 2026 further maintenance and systems enhancements were completed: a custom mattress was fitted in the master stateroom in April, bottom paint and zincs were refreshed in March and April, and in April a Direct TV Stream Anchor

system was installed alongside Starlink internet. Both life rafts were recertified in April, while the fire suppression systems received recertification in March.

Layout & accommodations

Step aboard at the transom and you are immediately greeted by the yacht's signature hydraulic transom, which lowers to unveil the Cabana — a private beach club at swim-platform level outfitted with a large-screen TV, refrigerator, ice maker, stereo, sofa and chairs, while underwater lighting prolongs the evening atmosphere. Teak-tread steps rise port and starboard to the aft deck, where a dining table accommodates up to eight guests opposite a forward-facing bench with a mounted TV, and effortless walkaround access leads to both amidship doors and the foredeck beyond. Expansive sliding glass and stainless doors open the aft deck into a salon appointed with an L-shaped sofa and ottoman to port and a bar and entertainment console to starboard that houses an under-counter refrigerator, wine storage and a large-screen TV on a lift. Faux-wood flooring flows seamlessly from the salon into the forward galley, which was rebuilt top to bottom during the 2021–2022 refit; a centerline round dining table seats six, and the former stair to the flybridge has been enclosed to form a bespoke bar complete with its own ice maker, wine cooler and coffee maker. Two steps up from the galley brings you to the pilothouse, equipped with a full electronics suite, a dedicated helm and a dinette that converts to a single berth. A stairwell just aft of the galley descends to the stateroom corridor: the full-beam master sits amidships with a king berth and dual en-suite heads; forward of the master lie two mirrored guest cabins, each offering twin berths and individual en-suite facilities; and the VIP forward presents a centerline queen with its own en-suite head. Aft and totally separate, the crew quarters berth three and include their own head and laundry, allowing crew movement to remain entirely outside guest areas. Above, teak steps from the aft deck lead to the flybridge, where a Balboa

Jacuzzi, dual grills, a generous dinette and a full secondary helm station create a true second living and command space, while forward on the foredeck a sun pad, twin anchor windlasses and walkaround access from either side deck provide a tranquil, private retreat removed from the lively entertaining spaces aft.

Salon

Illuminated by a full complement of soft LED overhead lighting installed in 2022, the salon exudes refined comfort beneath a bespoke headliner that was renewed in 2022. A luxurious L-shaped sofa with expansive under-seat storage is paired with a custom ottoman offering additional concealed space and an elegant upholstered chair, all fitted in 2022, creating an inviting lounge arrangement. Entertainment is effortless thanks to a large-screen television on a motorized lift added in 2022 and the enveloping, high-quality sound of five Bose speakers. A circular frosted-glass dining table with a "Lazy Susan" insert, also new in 2022, accommodates six with ease, while dedicated cabinetry keeps crockery, flatware and glassware impeccably organized. The salon's custom bar, crafted in 2022, features a Jura gourmet coffee machine with purpose-built glass and cup stowage, an Isotherm refrigerator, a Zephyr wine cooler installed in 2022 and a U-Line ice maker also fitted in 2022, and Hunter-Douglas electric shades to port and starboard, replaced in 2022, provide instantaneous privacy and ambiance at the touch of a button.

Galley

Comprehensively renewed during the 2022 refit, the galley has been redesigned from the ground up to present a clean, contemporary aesthetic complemented by all-new appliances, countertops and flooring. A stainless Panasonic microwave, a Miele four-burner cooktop and a KitchenAid stainless

oven—each installed in 2022—compose a refined culinary suite, while ventilation is handled by a Bosch exhaust fan mounted above the cooktop, also fitted in 2022. Cold storage is generous, provided by a Bosch stainless side-by-side refrigerator/freezer with a convenient pull-out drawer and dedicated freezer compartment, installed during the same refit. Meal preparation and cleanup are effortless at the large-capacity stainless sink, paired with white countertops accented by tasteful tile, all refreshed in 2022. Intelligent storage solutions include a pull-out pantry and abundant cabinet and drawer space, and circulation is effortless with direct access to the port side deck, a forward pocket door into the pilothouse and an aft door into the salon.

Pilothouse

From this commanding vantage the helm marries refined aesthetics with cutting edge control, centered around a full Garmin electronics suite installed in 2022 that features three 12 inch GPSMAP 1243 touch screen displays, integrated autopilot and a GPS NMEA 2000 antenna. Ship wide connectivity is provided by Starlink, accessible from the primary helm, while communications are assured by an ICOM M 506 VHF with Command Mic repeater, also fitted in 2022. Handling and onboard systems are managed with precision via SeaKeeper Zero Speed gyro stabilizer controls, ABT bow thruster toggle switches, responsive trim tab controls and a Ferretti ship system monitor, and safety is reinforced by the Fireboy engine shutdown system. The helm chair with hydraulic adjustment faces a padded dash console finished in black Lexan and set with a compass, and a Jabsco spotlight control gives added confidence for night navigation. For comfort underway or at anchor a U shaped dinette encircles a teak trimmed table with a burlwood inset installed in 2022 that converts into a single berth, with a discreetly mounted digital safe beneath the seating. Entertainment and productivity are served by a wall mounted

TV/computer monitor added in 2022 and a color printer/copier/scanner fitted the same year, while an exterior black mesh window cover moderates glare and heat to keep the space calm and composed.

Master stateroom

The master stateroom is centered around a king berth oriented to port, with hull windows that frame calm, water-level vistas. The en-suite head raises the standard of comfort with an oversized shower equipped with dual rainfall showerheads and two hand-held nozzles, complemented by waterline windows fitted with a privacy screen. A refined vanity area features dual sinks, a mirror and dedicated storage, while a generous closet provides abundant drawers and shelving for wardrobe organization. A welcoming lounge with a desk and chair creates a private space for relaxation or work, and onboard entertainment is assured by a large flat-screen TV and a Bose stereo system.

VIP stateroom

The VIP stateroom is luxuriously arranged around a queen-sized berth set on the centerline with generous storage beneath; a dedicated closet and a bank of drawers add orderly stowage, while an overhead hatch fills the space with natural light and supplies fresh air. Guests benefit from the privacy of an en-suite head with a separate shower, and on-board entertainment is supplied by a flat-screen TV coupled with a premium Bose stereo system.

Guest staterooms

Situated forward of the master are two symmetrically arranged guest cabins, one to port and one to starboard, each furnished with twin side-by-side berths; the starboard cabin can be equipped with an optional Pullman berth to

welcome a third sleeper. Every stateroom enjoys its own en-suite head with a shower, a flat-screen television and a Bose stereo system, and is finished with plentiful drawer storage and a bedside nightstand to keep personal effects elegantly organized.

Crew quarters

Situated aft and deliberately segregated from the guest areas, two crew cabins sleeping three are completely separated and offer no access to guest spaces. The captain is provided with a private cabin containing a single berth, while the crew bunkroom is fitted with over-under single berths, and both quarters share a head with an enclosed shower. Functionality is paired with high-end appointments, including a stacked Miele washer/dryer, and abundant integrated drawer storage is incorporated throughout.

Flybridge

More than a helm, the flybridge functions as a refined second salon, anchored by a Jacuzzi under a rigid cover with cleverly hidden perimeter storage and flanked by twin grills—an electric unit integrated into the cabinetry and a freestanding Weber propane—while a bespoke sun pad forward on the starboard side, created by professionally enclosing the former companionway, offers a sumptuous place to recline. A Besenzoni electric/hydraulic davit handles the RIB tender effortlessly, and a fully equipped secondary helm keeps the vessel's systems at hand so the skipper need not leave the social scene. The helm itself is appointed with two Garmin 16" GPSMAP 8616 touchscreen displays (installed 2022) providing radar, depth, speed and TV readouts, tied into a Garmin 604xHD long-range radar, GSD 26 sonar, AIS 800 Blackbox and an autopilot installed in 2022. Communications are handled by two ICOM M506 VHF radios with Command Mic IV handsets, one configured as a

repeater, and situational awareness is extended by three Garmin IP cameras (transom/tender view plus engine room port and starboard), installed in 2022. Precise vessel management is delivered through MTU gear/throttle controls, ABT Trac bow thruster controls and trim tab controls, augmented by an electric up/down electronics console, main engine RPM and temperature gauges, Jabsco spotlight control, an air horn and arch lighting.

Entertainment and comfort are equally considered: a Fusion MS-RA770 touch-screen stereo with Sirius XM (installed 2022) powers two JL Audio speakers and two subwoofers via a 5-channel marine amplifier, zoned across four control panels, while a DirecTV Stream Anchor system paired with Starlink internet, installed April 2026 and serving all TVs, ensures seamless streaming. A 50" Fusion outdoor TV mounted on a custom stainless bracket (installed 2022) transforms evenings al fresco, and a Bimini top with a three-sided enclosure (installed 2022) provides adaptable shade and shelter. The U-shaped dinette, updated with a new table, cushions and storage in 2022, creates an inviting gathering area, and a hatch with teak steps leads down to the aft deck, preserving a graceful, effortless flow between entertainment spaces.

Engine room & systems

The engine room manifests uncompromising engineering excellence, propelled by twin MTU 16V2000 diesel engines (model R160-7MI-L) replaced under MTU warranty in 2011 and delivering confident thrust through ZF Direct Drive transmissions (model 255A) with a 2.536:1 ratio. Command is effortless via MTU electronic throttle and gear controls at three stations—pilothouse, flybridge and aft deck. Electrical generation is equally substantial, provided by two Kohler 23kW diesel generators (model 23EOZD) housed in sound shields and supplying 12/24V DC and 120/240V AC 60Hz service. Shore power is managed with two 100-amp cords on Glendinning Cable Master reels at the aft port transom, supported by two Acme shore power transformers with boost

capability and protected by two Gail Safe Max galvanic isolators. The house battery bank was renewed in 2022 with ten Lifeline GPL-4DA and six GPL-4DL batteries. Onboard comfort and control are enhanced by a SeaKeeper Model 26 zero-speed gyro stabilizer, power hydraulic steering with a new pump installed in 2022, and an ABT bow thruster. Long-range autonomy is assured by a Sea-R.O. water maker rated at 48 gph and fitted new in 2022, while guest amenities include six Tecma 24V electric heads and two hot water tanks. Fuel integrity is maintained by four Separ 2000/10 UMS fuel/water separators with secondary bowls.

Deck, hull & safety

Designed for graceful arrivals and effortless anchoring, the foredeck is outfitted with twin 50kg Bruce-type anchors fed through a dual stainless anchor chute with bow rollers, each riding on galvanized chain—225' on the port side and 325' on the starboard—with color-coded scope markers at 50', 100', 150', 200' and 300' for exacting control. Ground tackle is managed by two Lofrans 24V windlasses equipped with wildcats and capstan drums, while dedicated Lofrans 24V snubbing winches on the aft deck (one each port and starboard) ensure sure handling of docklines. Practical convenience and cleanliness are provided by a fresh water anchor washdown. Embarking and water access are executed with elegance via a Besenzoni hydraulic passerelle at the starboard transom and a hydraulic swim ladder on the port platform, and toys and the tender are handled by a Besenzoni 600kg electric/hydraulic davit. Two boarding gates, boarding steps, fenders and mooring lines are provided for straightforward dock operations, and the yacht's silhouette is enhanced by underwater lighting installed in 2021.

Safety onboard is comprehensive and current. Two Datrex 8-person Sea Safe life rafts, recertified April 2026, are carried alongside 20 USCG-approved life jackets and two USCG Type IV throwable devices, with nine portable fire

extinguishers and an Ocean Signal Class-2 EPIRB for distress signaling. Fire suppression is provided by Fireboy HFC-227 clean agent systems—two units protecting the engine room and one for the generator space—recertified March 2026, while a Sea-Fire FM-200 system safeguards the electrical panel in the crew companionway. Bilge protection employs 24V submersible pumps throughout the vessel supplemented by a dedicated Gianneschi manifold pump, with audible and visual high-water alarms for early warning, crash suction valves on the main engine raw water pickups, and USCG-approved navigation lights to ensure compliant operation in all conditions.

Disclaimer

The particulars provided for this yacht are presented in good faith, yet their absolute accuracy cannot be assured and no express or implied warranty is made regarding the condition of the vessel. The offering remains subject to prior sale, alteration of price, or removal from the market without notice. This information is supplied by the broker for the convenience of clients and is not intended to constitute direct representation of any specific yacht for sale.

CONTACTS

Shestakov Yacht Sales is a brokerage company specializing in the sale and service of yachts worldwide. The company offers services for buying and selling both new and used motor yachts, sailing vessels, and luxury superyachts. They also provide yacht registration, insurance, technical maintenance, crew selection, and charter organization services across the U.S., Canada, Latin America, the Caribbean, and the Bahamas.

The founder and lead broker of the company is Andrey Shestakov, a licensed and certified expert with extensive experience in marine engineering and shipbuilding.

The company has an extensive network of partnerships with major yacht manufacturers worldwide and provides services in multiple languages, including Russian, Ukrainian, Spanish, and English. The office is in Dania Beach, Florida, USA.

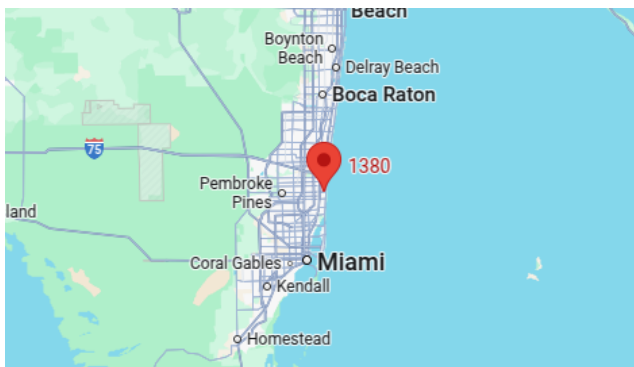
For more information and to view available yachts, you can visit the company's official website: <https://shestakovyachtsales.com>

Contact details

Phone: +1(954)274-4435

Email: andrey@shestakovyachtsales.com

Address



1380 Weeping Willow Way, Hollywood,
Florida 33019