

## BISE I - DELTA CARBON



**Builder:** [DELTA CARBON](#)

**LOA:** 84' 0" (25.88 m)

**Year Built:** 2020

**Beam:** 20' 0" (6.22 m)

**Model:** Delta Carbon 88

**Max Draft:** 5' 8" (1.72 m)

**Price:** \$4,583,961.93 USD Subject to change.

**Cruising Speed:** 26 Knots (29.92 MPH)

[See full listing on our website](#)

**Location:** Genoa, Italy

**Max Speed:** 39 Knots (44.88 MPH)

---

# TABLE OF CONTENTS

---

**OVERVIEW ..... 3**

**SPECIFICATIONS ..... 4**

    Basic Information ..... 4

    Dimensions ..... 4

    Speed, Capacities and Weight ..... 4

    Accommodations ..... 5

    Hull and Deck Information ..... 5

    Engine Information ..... 5

**GALLERY ..... 6**

**CONTACTS ..... 12**

## OVERVIEW

---

BISE 1, the DELTA 88 motor yacht, embodies visionary naval architecture where exceptional through the water efficiency meets indulgent comfort and meticulous craftsmanship. Her rigid yet featherlight carbon fiber hull and the latest IPS propulsion drive this approximately 80 foot planing performance motor yacht to a 39 knot peak while reducing fuel consumption and emissions by up to 40 percent compared with comparable GRP builds. Joystick command provides precise maneuverability and effortless control for both docking and passagemaking. Completed to an owner's brief as the 88 Carbon, she reveals a handcrafted, Scandinavian inspired interior defined by expansive sightlines, refined finishes and generous stowage. Configured for owner operation or a compact professional crew, she accommodates eight guests across a full beam king master suite, a VIP and two twin cabins, with separate quarters for up to four crew. Broad, flexible cockpit and open air deck spaces elevate entertaining and on the water pursuits, uniting the qualities of a luxury powerboat, sport yacht, express cruiser and superyacht grade cruiser in one vessel.

# SPECIFICATIONS

---

## Basic Information

---

**Category:**  
Motor yachts

**Year Built:**  
2020

**Model Year:**  
2020

**Country:**  
Italy

## Dimensions

---

**LOA:**  
84' 0" (25.88 m)

**Max Draft:**  
5' 8" (1.72 m)

**Beam:**  
20' 0" (6.22 m)

## Speed, Capacities and Weight

---

**Cruise Speed:**  
26 Knots (29.92 MPH)

**Water Capacity:**  
317.01 Gallons

**Max Speed:**  
39 Knots (44.88 MPH)

**Fuel Capacity:**  
1585.03 Gallons

## Accommodations

---

**Sleeps:**

8

**Crew Cabin:**

2

**Total Heads:**

4

**Crew Berths:**

4

## Hull and Deck Information

---

**Hull Material:**

Fiberglass and Plastic Yachts

**Hull Designer:**

N/A

**Deck Material:**

Carbon Fiber

**Interior Designer:**

Lars Modin

**Hull Configuration:**

N/A

## Engine Information

---

**Engines:**

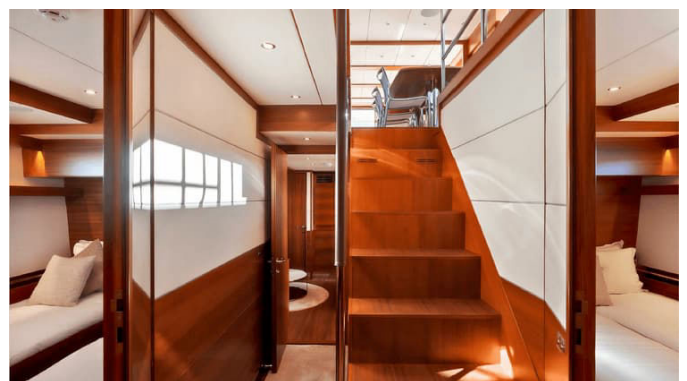
2

**Manufacturer:**

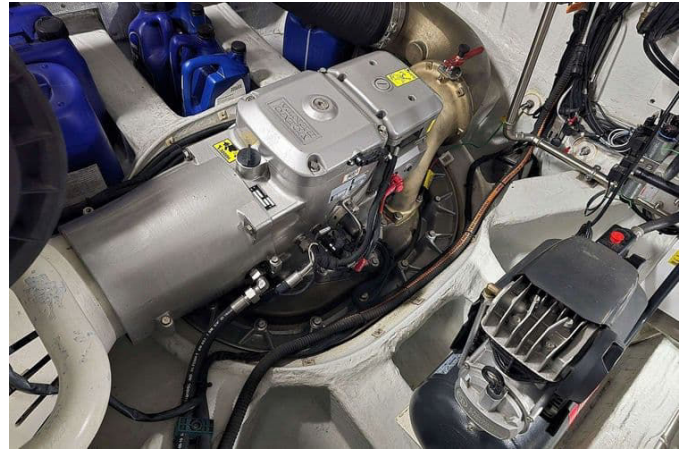
Volvo Penta

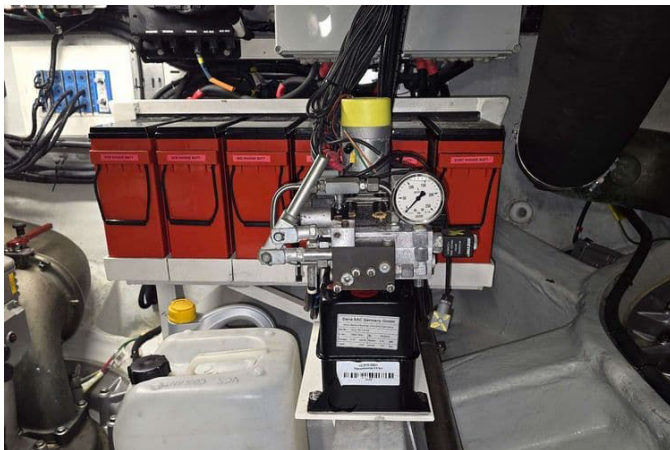
# GALLERY













# CONTACTS

---

Shestakov Yacht Sales is a brokerage company specializing in the sale and service of yachts worldwide. The company offers services for buying and selling both new and used motor yachts, sailing vessels, and luxury superyachts. They also provide yacht registration, insurance, technical maintenance, crew selection, and charter organization services across the U.S., Canada, Latin America, the Caribbean, and the Bahamas.

The founder and lead broker of the company is Andrey Shestakov, a licensed and certified expert with extensive experience in marine engineering and shipbuilding.

The company has an extensive network of partnerships with major yacht manufacturers worldwide and provides services in multiple languages, including Russian, Ukrainian, Spanish, and English. The office is in Dania Beach, Florida, USA.

For more information and to view available yachts, you can visit the company's official website: <https://shestakovyachtsales.com>

## Contact details

---

**Phone:** +1(954)274-4435

**Email:** [andrey@shestakovyachtsales.com](mailto:andrey@shestakovyachtsales.com)

## Address

---



1380 Weeping Willow Way, Hollywood,  
Florida 33019