

SATISFACTION - AZIMUT YACHTS



Builder: [Azimut Yachts](#)

LOA: 84' 0" (25.60 m)

Year Built: 2017

Beam: 20' 0" (6.20 m)

Model: 84

Max Draft: 19' 2" (5.83 m)

Price: \$2,399,000 USD Subject to change.

Cruising Speed: 24 Knots (27.62 MPH)

[See full listing on our website](#)

Location: Fort Lauderdale, United States

Max Speed: 27 Knots (31.07 MPH)

TABLE OF CONTENTS

OVERVIEW	3
SPECIFICATIONS	4
Basic Information	4
Dimensions	4
Speed, Capacities and Weight	4
Accommodations	4
Hull and Deck Information	5
Engine Information	5
GALLERY	6
DETAILED DESCRIPTION	19
CONTACTS	25

OVERVIEW

Trades welcome and financing available. Discover the best priced Azimut 84 on the market today.

Launched in 2017 at Viareggio by Italian shipyard Azimut Yachts, SATISFACTION is a 26m (84ft) luxury motor yacht built in robust fiberglass/GRP and extensively personalized under the direction of acclaimed Italian designer Achille Salvagni.

Inside, this flybridge superyacht radiates sophistication with hand selected Italian marble, deep pile carpeting, and custom seating throughout; the main salon adopts an open plan arrangement with a generous lounge to port and a forward dining zone, while oversized windows bathe the interior in daylight to create a bright, welcoming setting for entertaining.

Accommodating up to eight guests in four staterooms plus three crew, SATISFACTION features a full beam owner's suite on the lower deck accessed by a private staircase, while three impeccably finished guest cabins forward, all with en suite bathrooms, comprise three doubles and one convertible that can be arranged as single berths.

Her exterior spaces balance refined onboard living with outdoor relaxation: the expansive flybridge is a true focal point, offering a sun lounging area aft for unwinding; the main deck aft is arranged for alfresco dining with sweeping views; and the broad swim platform ensures effortless access to the sea and a seamless connection to the transom.

Powered by twin 1,800 hp MAN diesel engines, this Azimut flybridge yacht delivers compelling performance and refined comfort under way.

SPECIFICATIONS

Basic Information

Model Year:
2017

Country:
United States

Year Built:
2017

Dimensions

LOA:
84' 0" (25.60 m)

Max Draft:
19' 2" (5.83 m)

Beam:
20' 0" (6.20 m)

Speed, Capacities and Weight

Cruise Speed:
24 Knots (27.62 MPH)

Water Capacity:
356 Gallons

Max Speed:
27 Knots (31.07 MPH)

Fuel Capacity:
1795 Gallons

Accommodations

Total Heads:
5

Hull and Deck Information

Hull Material:

Fiberglass and Plastic Yachts

Hull Designer:

N/A

Deck Material:

Fiberglass

Interior Designer:

N/A

Hull Configuration:

N/A

Engine Information

Engines:

2

Engine Type:

Inboard

Manufacturer:

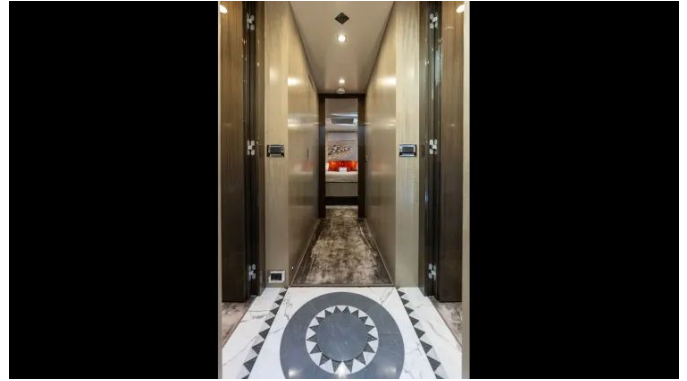
MAN

Fuel Type:

Diesel

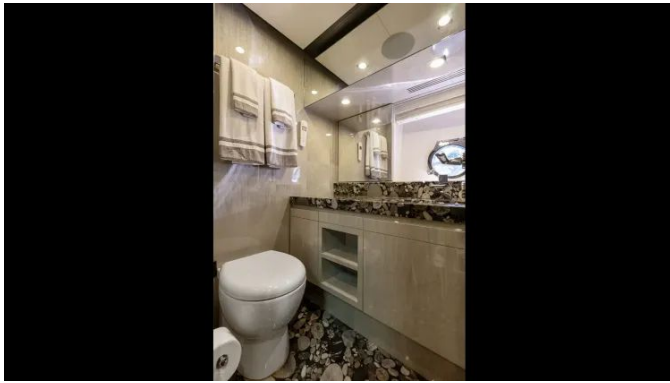
GALLERY

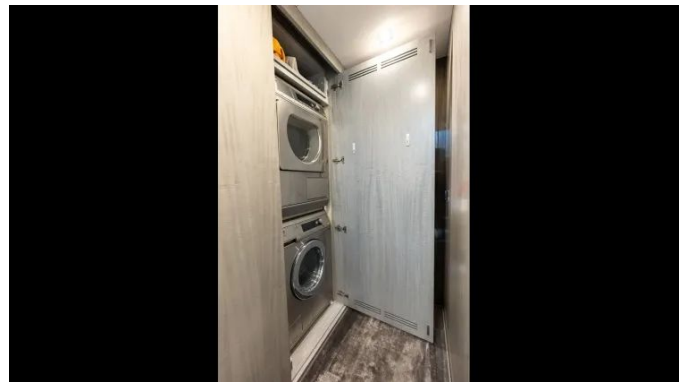
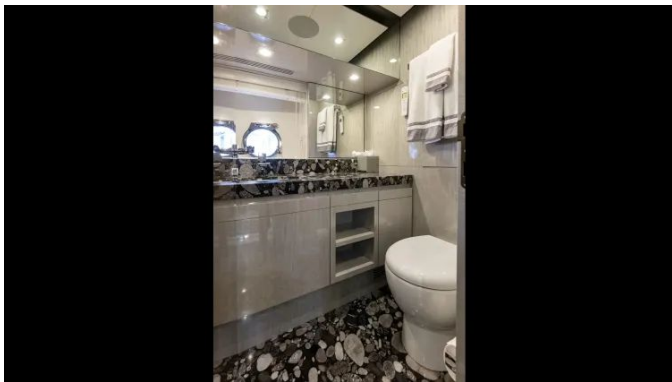


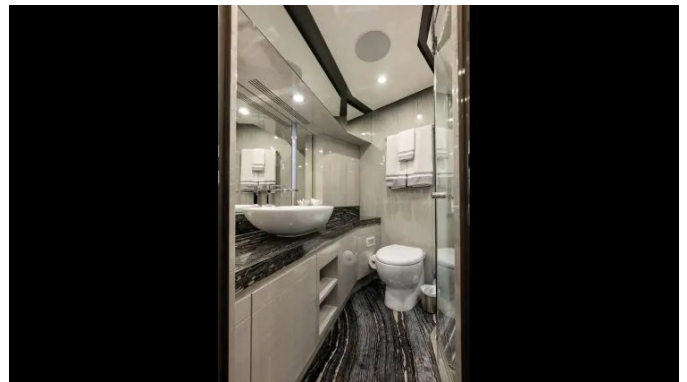
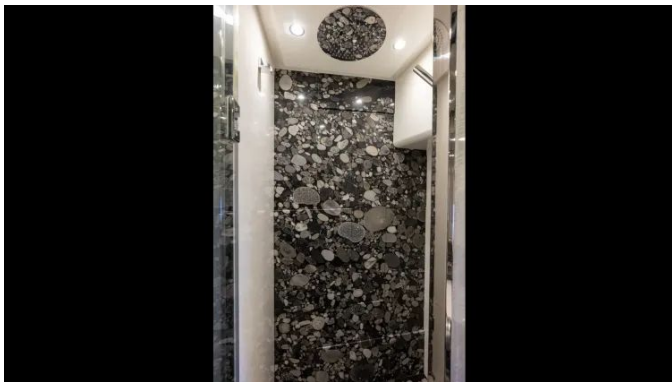


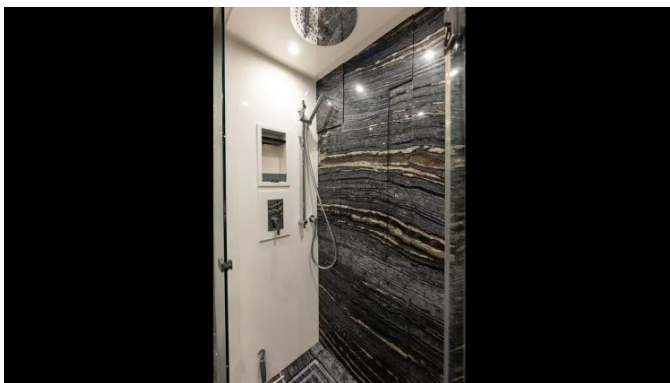
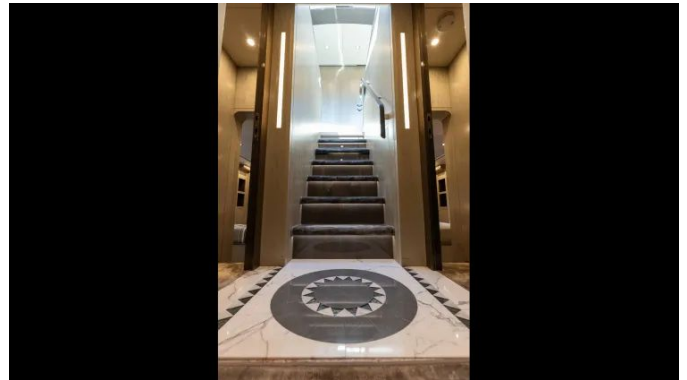


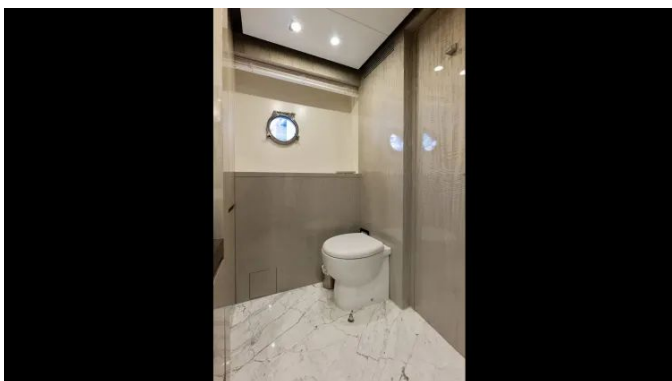


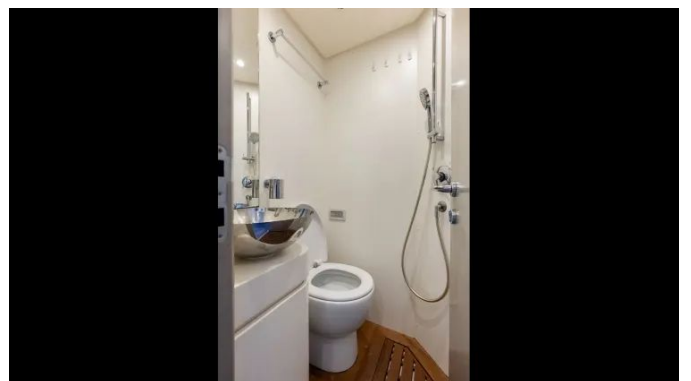
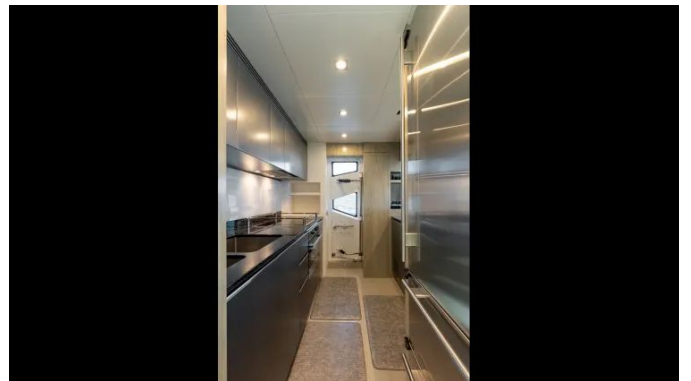
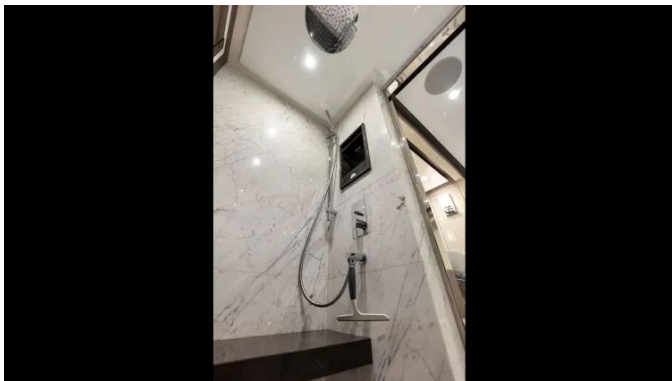


















DETAILED DESCRIPTION

Salon

Bathed in soft natural light, the salon centers around a fifty-five-inch flatscreen TV on a high/low lift, opposite an L-shaped sofa by Molteni & Co. and two single chairs, all set over a gray designer carpet. A coffee table in dark wood with a matte white lacquered top anchors the seating area, while Roman shades and thoughtfully integrated shelving and storage run throughout. Forward, a round dining room table with six Frag Bella chairs is complemented by a dramatic backlit bar column with a wine cooler and glass storage. The bar experience continues with a Sub-Zero wine cooler topped with white onyx and a backlit bar area finished in white onyx with three barstools. Practicality meets privacy with a pocket door separating the wheelhouse, and a separate staircase to the master cabin with a stainless steel railing completes this refined living space.

Master cabin

Privately accessed via its own staircase, the master cabin is anchored by a king berth with storage below, flanked by two enlarged nightstands and complemented by two wardrobe closets for impeccable organization. Roman shades and blackout curtains let you set the ambiance from softly filtered daylight to complete darkness, while a 55-inch TV provides effortless entertainment. Storage is thoughtfully integrated throughout, and the ensuite features a walk-in shower and a double vanity for a refined, spa-like finish.

Galley

Designed for culinary excellence, the galley showcases a Miele four-burner

cooktop beneath a Miele extractor hood, with a Miele dishwasher streamlining cleanup. Cold storage is abundant thanks to a Sub-Zero refrigerator paired with a Sub-Zero wine cooler, while an Isotherm icemaker delivers perfectly chilled refreshments on demand. Sleek silver metallic cabinetry frames a striking Diamond Fall countertop and a luminous white onyx backsplash, and a double sink customized for additional storage maximizes utility without sacrificing elegance. A convenient pull-out pantry and intelligently planned storage throughout keep provisions and tableware impeccably organized.

Crew area

Thoughtfully designed for comfort and efficiency, the crew area provides a private captain's cabin with a double bed and a separate crew cabin with two twin bunks, creating restful accommodations for extended passages. Practical amenities include an Isotherm refrigerator and a Cuisinart microwave for quick provisioning and warm meals on the go. Operational awareness is enhanced by both a ship monitoring system and a Raymarine monitoring system, ensuring seamless oversight of onboard functions. Completing the space, a well-appointed head with a separate shower and sink offers the convenience and privacy the crew deserves.

Flybridge

A hardtop with a white soft-top liner crowns the space, complemented by a second radar arch and teak decks. Entertaining is effortless with extended bar cabinets and four swiveling bar stools, supported by an Isotherm icemaker, an Isotherm 65lt refrigerator drawer, and an additional Isotherm 65lt refrigerator. A custom BBQ cabinet in the aft starboard corner is equipped with one Kenyon Texan grill, enhanced by a folding shelf on the forward side of the BBQ cabinet as per the sketch provided. For open-air cinema, a stainless-steel pole

accommodates a 32-inch TV with TV predisposition at the bar cabinet, the bottom of the screen precisely seven inches from the bar countertop. Evening ambiance is perfected by LED spotlights recessed in the fiberglass on the aft flybridge in lieu of the spotlight, while safety is assured by two Zodiac Xtreme 8P TO PA SOLAS MED PACK A life rafts with cradles integrated into the handrails on the sides.

Machinery & electrical

Propelled by two MAN D2862-LE436 engines, this yacht delivers assured performance, while onboard power is managed by two 29 kW Onan generators and shore connectivity via two 100-amp cords, without Glendenning. Extended autonomy is provided by an Idromar C902 watermaker, and confident, comfortable passages are ensured by electric stabilizer fins and a bow thruster.

Original build with options & upgrades

A comprehensive surveillance suite begins with a zooming and pivoting video camera in the engine room on a Panasonic system, complemented by fixed video cameras on both aft side decks oriented toward the forward area, their positioning executed as per the lighting plan and monitored via an iPad. In the aft cockpit, a Panasonic WV-SW458 360° camera replaces the fixed unit, and another Panasonic WV-SW458 360° camera is recessed as much as possible—more than on 84-19—to preserve the yacht's sleek profile. Humphree intruders (Atos version) further refine performance.

Confident seakeeping and precise handling come courtesy of CMC Electric stabilizers, a hydraulic bow thruster, an upgraded steering system, and bigger rudders to enhance maneuverability at lower speeds. Power management is bolstered by ONAN generators (EPA Tier 3 compliant) in lieu of the standard

Kholer units, while propulsion benefits from Class S propellers specified to S&S five blades as per 84-21. Domestic comfort is assured with two upgraded water heaters of one hundred liters each.

Sound attenuation is meticulously addressed with additional soundproof insulation between the salon and the engine room, between the master cabin and the engine room, and between the master cabin and the dining area/galley. Further acoustic refinement includes additional insulation on the forward bulkhead in the master cabin and on the engine room vent boxes in the salon.

Anchoring and deck hardware receive meaningful upgrades: a polished stainless steel anchor replaces the standard unit and runs on one hundred twenty-five metres of anchor chain, with gutters added to the chain locker hatches to manage runoff. For streamlined operations, a permanent marker of fourteen stainless steel triangles is installed on the hull to indicate strap positions as per the docking plan. Deck functionality is elevated with an additional pair of midship cleats placed on the bulwark in the forward area, the repositioning of the standard side boarding gates aft between the howseholes, and the forward side boarding gate locations executed as per 84-19. Handrails on the side decks are increased in height, while side lockers beside the bow sitting area expand practical storage.

Illumination and navigation visibility are exceptional. The yacht carries twenty-two underwater lights: five beneath the swim platform in THX1201 white light, eight on each side in TIX301 white light, plus one additional THX1201 white light under the swim platform for a total of six aft. All lights are networked to a single switch on the aft deck with a second switch in the master cabin, their locations set as per the lighting plan. The side navigation lights are moved from their standard positions to the base of the arch and upgraded to low-profile units—Lopolight 300-001 and Lopolight 300-002—while antennas remain unbranded for a cleaner silhouette.

On deck, every external table is crafted in teak to the Benetti sample with a refined twenty percent gloss. In the forward area, a breakfast table replaces the standard coffee tables, precisely leaving a six-inch gap between the tabletop and the fiberglass settee, with the umbrella bases integrated within the table bases for a tidy finish. Four Royal Botania Ninix NNX 55 chairs, in teak with brushed stainless steel structure, complete the ensemble. The single waterline is specified in custom Palinal G936, and the standard aft shower is elegantly repositioned to the starboard-side locker adjacent to the swim platform. A separate removable section of the forward sun-pad area is set above the escape hatch of the VIP cabin.

Interior detailing is equally thoughtful: the standard bar cabinet is deleted in favor of the Azimut 88 bar cabinet, its top finished in marble for elevated elegance. A stainless steel pole supports a thirty-two-inch TV with full TV predisposition, and a storage locker is added on the starboard side beneath the stairs to the flybridge. The aft salon access door is configured to open from starboard side to port side. Branding is discreet, with no logo on the helm seats and seat logos color-matched to the leather.

Water system readiness is assured with a watermaker predisposition and a watermaker remote control panel installed in the crew mess area, alongside a 130 l/h (34 gals/h) Idromar watermaker to guarantee self-sufficiency on extended passages. Practical finishing touches include hooks for mooring lines in the chain locker as per 84-20, ensuring the yacht's deck operations remain as effortless as they are refined.

Exclusions

The sale expressly excludes the owner's personal items, which are reserved and will not convey with the vessel.

Disclaimer

The details of this yacht are offered in good faith; however, accuracy cannot be guaranteed and no warranty is made regarding the vessel's condition. This yacht is offered subject to prior sale, price change, or withdrawal from the yacht market without notice. The listing is provided as a convenience by the broker to its clients and is not intended to convey direct representation of a specific yacht for sale.

CONTACTS

Shestakov Yacht Sales is a brokerage company specializing in the sale and service of yachts worldwide. The company offers services for buying and selling both new and used motor yachts, sailing vessels, and luxury superyachts. They also provide yacht registration, insurance, technical maintenance, crew selection, and charter organization services across the U.S., Canada, Latin America, the Caribbean, and the Bahamas.

The founder and lead broker of the company is Andrey Shestakov, a licensed and certified expert with extensive experience in marine engineering and shipbuilding.

The company has an extensive network of partnerships with major yacht manufacturers worldwide and provides services in multiple languages, including Russian, Ukrainian, Spanish, and English. The office is in Dania Beach, Florida, USA.

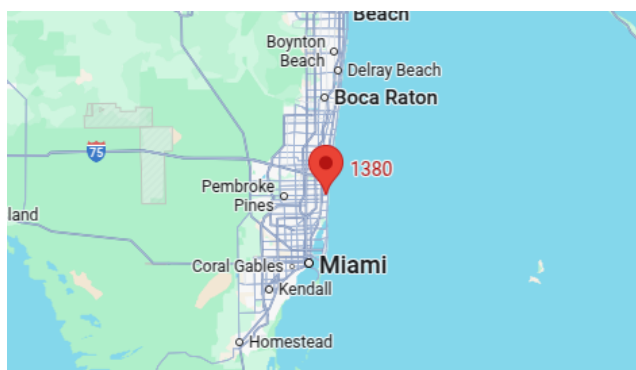
For more information and to view available yachts, you can visit the company's official website: <https://shestakovyachtsales.com>

Contact details

Phone: +1(954)274-4435

Email: andrey@shestakovyachtsales.com

Address



1380 Weeping Willow Way, Hollywood,
Florida 33019