



SATISFACTION - AZIMUT YACHTS



Builder: [Azimut Yachts](#)

LOA: 84' 0" (25.60 m)

Year Built: 2017

Beam: 20' 0" (6.20 m)

Model: 84

Max Draft: 19' 2" (5.83 m)

Price: \$2,399,000 USD Subject to change.

Cruising Speed: 24 Knots (27.62 MPH)

[See full listing on our website](#)

Location: Miami Beach, United States

Max Speed: 27 Knots (31.07 MPH)

If you would like to buy a yacht **SATISFACTION - AZIMUT YACHTS** or would like help answering any questions concerning purchasing, selling, or chartering a yacht, please call **+1(954)274-4435** or click here on <https://shestakovyachtsales.com>

TABLE OF CONTENTS

OVERVIEW 3

SPECIFICATIONS 4

 Basic Information 4

 Dimensions 4

 Speed, Capacities and Weight 4

 Accommodations 5

 Hull and Deck Information 5

 Engine Information 5

GALLERY 6

DETAILED DESCRIPTION 19

CONTACTS 24

OVERVIEW

Trade-ins are welcomed and financing is available, presenting a rare chance among 84' Azimut flybridge motor yachts. Delivered in 2017 from Azimut Yachts' Viareggio yard, SATISFACTION is a 26 m (84 ft) luxury motor yacht moulded in sturdy GRP with a planing hull and given a bespoke interior by renowned Italian designer Achille Salvagni. Her presence is defined by superyacht-level workmanship and an understated, cultivated elegance.

Within, SATISFACTION exudes Italian refinement, where hand-selected marble, sumptuous deep-pile carpeting and custom-made furnishings create a warm, sophisticated atmosphere. The open-plan main salon encourages convivial relaxation, with a generous lounge to port and a forward dining bay, while broad windows flood the space with daylight, producing an airy, inviting setting perfect for elegant entertaining and effortless passagemaking.

Sleeping arrangements accommodate up to eight guests across four staterooms, supported by quarters for three crew. A full-beam owner's suite occupies the lower deck and is reached by a private staircase for enhanced seclusion. Forward on the lower deck are three beautifully appointed guest cabins, each en-suite, comprising three double berths, one of which converts to twin berths, offering adaptable layouts for family use or visiting company.

Exterior living is thoughtfully designed: the expansive flybridge, a signature of true flybridge yachts, provides an aft sun lounge for open-air repose, while the main deck aft features an alfresco dining area framed by panoramic vistas. A generous swim platform provides easy sea access and integrates smoothly with the transom, amplifying the yacht's leisure and watersports functionality.

Propelled by twin 1,800 hp MAN diesel engines, this performance-oriented cruiser surpasses 27 knots and cruises comfortably at 24 knots, delivering assured, swift passages with the poise expected of a premier Italian Azimut 84.

SPECIFICATIONS

Basic Information

Category:
Motor yachts

Year Built:
2017

Sub category:
Motor Yacht

Country:
United States

Model Year:
2017

Dimensions

LOA:
84' 0" (25.60 m)

Max Draft:
19' 2" (5.83 m)

Beam:
20' 0" (6.20 m)

Speed, Capacities and Weight

Cruise Speed:
24 Knots (27.62 MPH)

Water Capacity:
356 Gallons

Max Speed:
27 Knots (31.07 MPH)

Fuel Capacity:
1795 Gallons

Accommodations

Total Heads:

5

Hull and Deck Information

Hull Material:

Fiberglass and Plastic Yachts

Hull Designer:

N/A

Deck Material:

Fiberglass

Interior Designer:

N/A

Hull Configuration:

N/A

Engine Information

Engines:

2

Engine Type:

Inboard

Manufacturer:

MAN

Fuel Type:

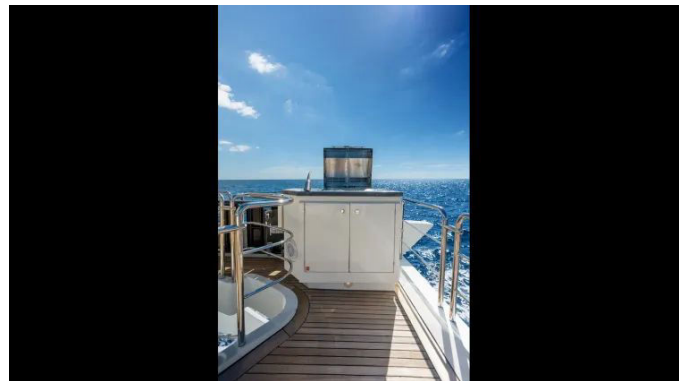
Diesel

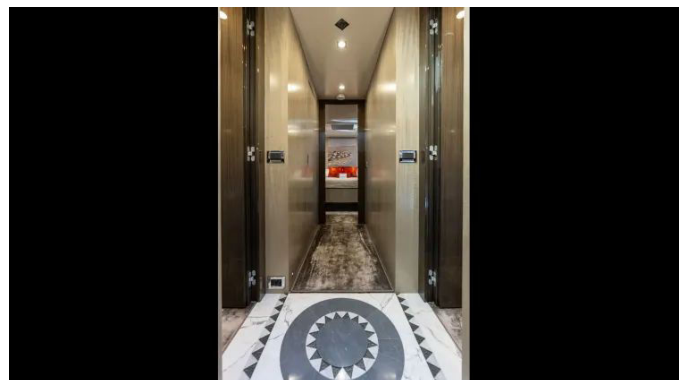
GALLERY

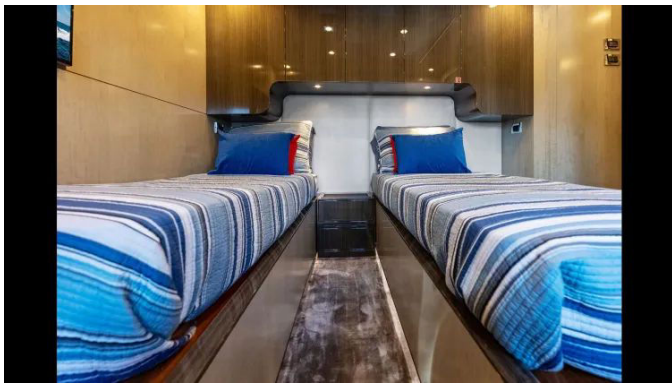
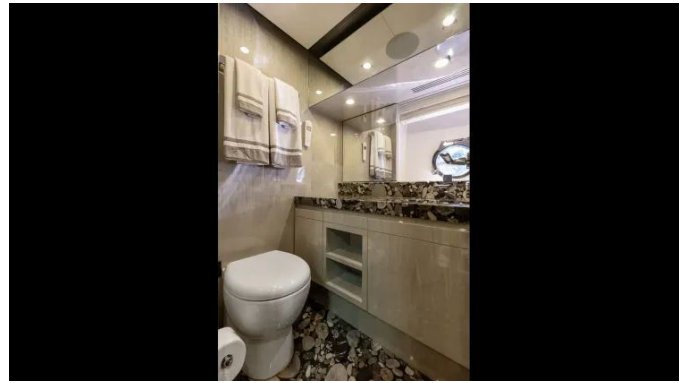
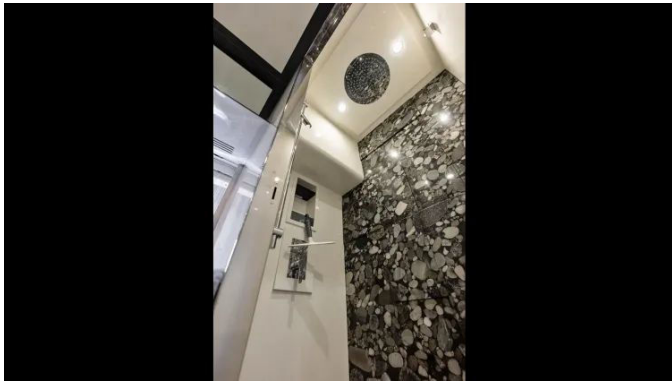


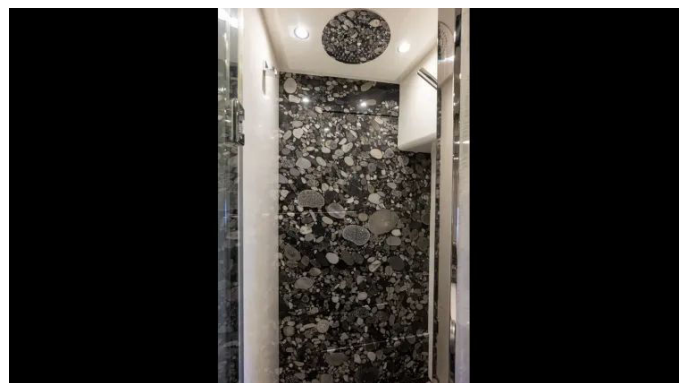
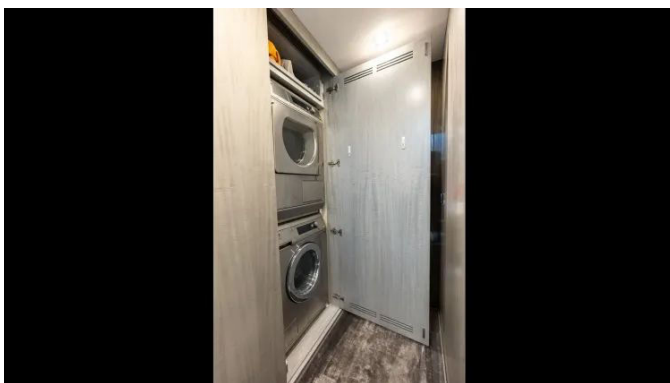
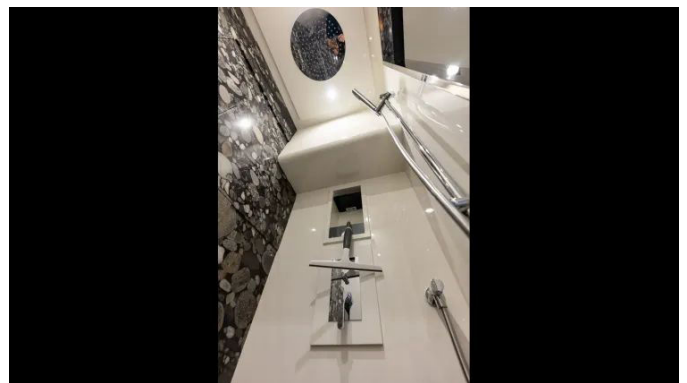


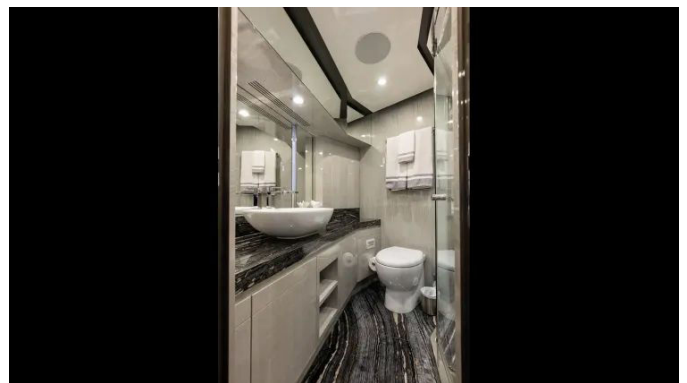


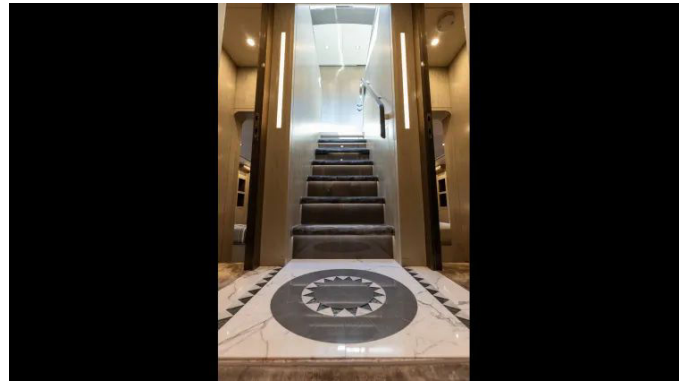
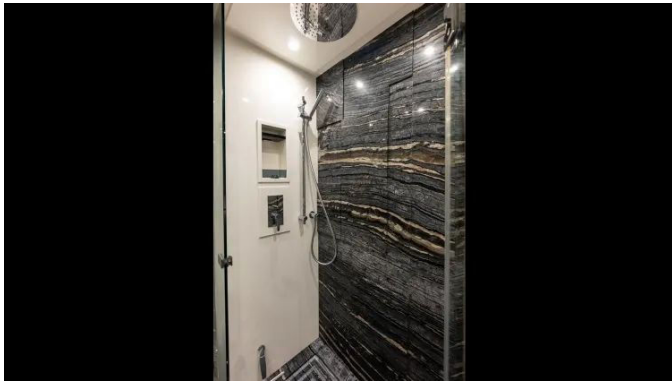


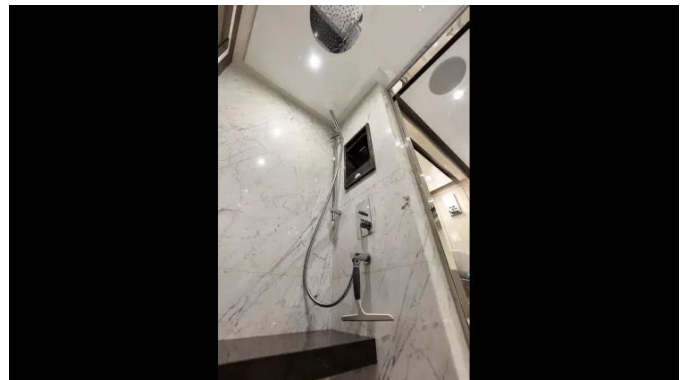
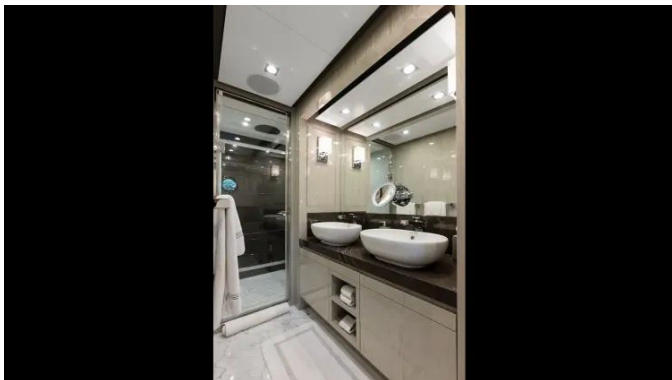
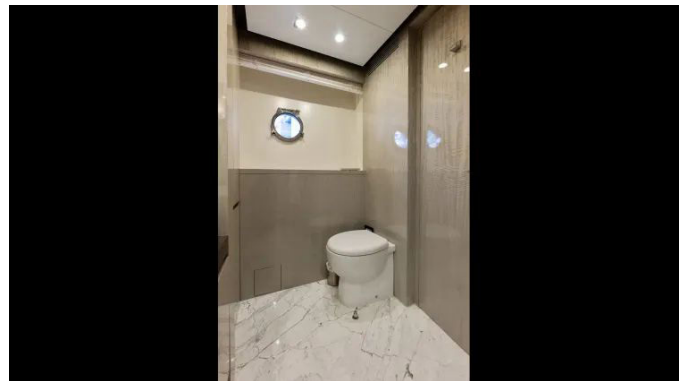
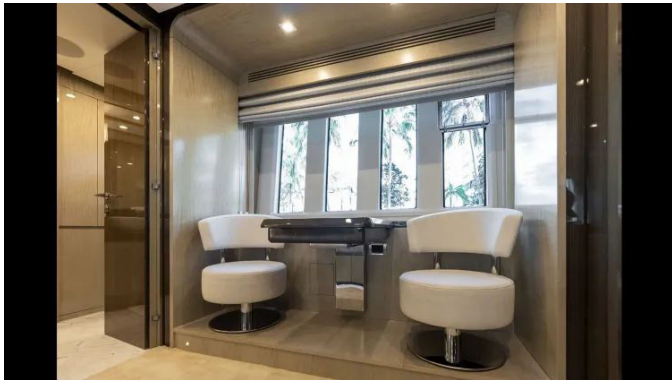




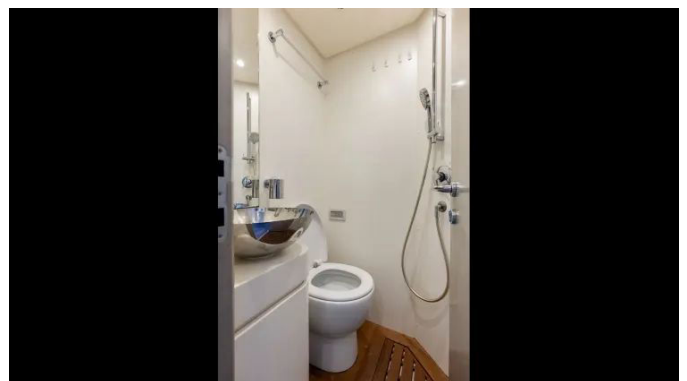
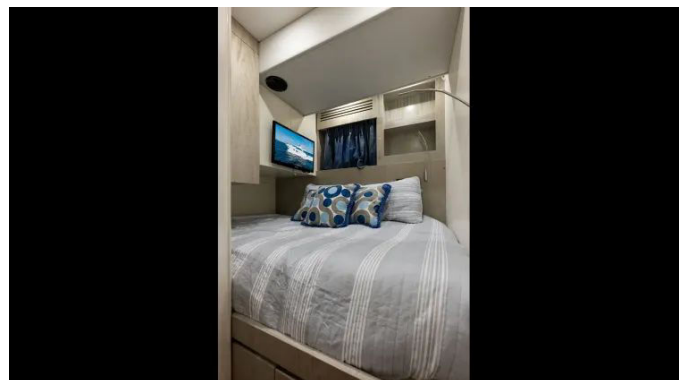














DETAILED DESCRIPTION

Salon

An elegant social hub unfolds in the salon, anchored by a 55" flatscreen TV on a smooth high/low lift that disappears at a touch to preserve clean sightlines, while a tailored L-shaped sofa by Molteni & Co. pairs with two single chairs around a coffee table crafted in dark wood with a matte white lacquered top, all set over a gray designer carpet and framed by soft Roman shades throughout, and opposite a round dining table encircled by six Frag Bella chairs for intimate meals; a backlit bar column integrates a wine cooler and dedicated glass storage, shelving and thoughtfully placed cabinetry provide storage throughout, complemented by a Sub-Zero wine cooler crowned with luminous white onyx and a backlit bar area finished in the same white onyx with three barstools, a separate staircase with a polished stainless-steel railing leads discreetly to the master cabin, and a sleek pocket door cleanly separates the wheelhouse to preserve privacy and serenity underway.

Master cabin

The master cabin is a sanctuary of calm reached via a private staircase, featuring a king berth with generous storage below and flanked by two enlarged nightstands and two full-height wardrobe closets, Roman shades paired with blackout curtains ensure perfect rest while a 55" TV provides effortless entertainment, abundant built-in storage keeps the space impeccably ordered, and the sumptuous ensuite indulges with a walk-in shower and a double vanity, turning daily rituals into a refined pleasure.

Galley

Purpose-built for gourmet confidence, the galley centers on a Miele four-burner cooktop beneath a Miele extractor hood, supported by a Miele dishwasher for smooth service, cold storage is assured by a Sub-Zero refrigerator and a Sub-Zero wine cooler while an Isotherm icemaker keeps refreshments perfectly chilled, a pull-out pantry, silver metallic cabinetry, and a striking Diamond Fall countertop flow into a custom double sink configured for additional storage, all backed by a luminous white onyx backsplash, and intelligent storage throughout keeps every culinary tool precisely where it belongs.

Crew area

Designed for efficiency and comfort, the crew area provides a dedicated captain's cabin with a double bed and a separate crew cabin with two twin bunks, daily essentials are supported by an Isotherm refrigerator and a Cuisinart microwave, while both a ship monitoring system and a Raymarine monitoring system ensure vigilant oversight of onboard operations, a well-appointed head with separate shower and sink completes a private, practical space for professional service.

Flybridge

The flybridge invites open-air indulgence beneath a hardtop with a white soft-top liner, complemented by a second radar arch and beautiful teak decks underfoot, entertaining is effortless with four swiveling bar stools at extended bar cabinets, an Isotherm icemaker, an Isotherm 65 L refrigerator drawer, and an additional Isotherm 65 L refrigerator, a custom BBQ cabinet in the aft starboard corner houses a Kenyon Texan grill with a folding shelf on its

forward side as per the provided sketch, a stainless-steel pole supports a 32" TV with predisposition at the bar cabinet, precisely set so the bottom of the screen sits seven inches above the bar countertop, discreet LED spotlights recessed into the aft flybridge fiberglass in lieu of a single spotlight cast a sophisticated glow, while two Zodiac Xtreme 8P TO PA SOLAS MED PACK A life rafts are cleverly integrated on cradles within the side handrails for safety without compromise.

Machinery & electrical

Confidence underway comes from twin MAN D2862-LE436 engines, supported by two Onan 29 kW generators showing 3852 and 3560 hours, shore power is managed via two 100 Amp cords (no Glendinning), while freshwater autonomy is enhanced by an Idromar Watermaker C902, electric stabilizer fins and a responsive bow thruster complete a machinery suite engineered for smooth, quiet, and authoritative cruising.

Original build with options & upgrades

This original build was specified with an extensive suite of options and upgrades for command, comfort, and style, in the engine room a zooming and pivoting Panasonic video camera provides detailed oversight complemented by fixed video cameras on both aft side decks aimed forward, all monitored via iPad, in the aft cockpit a Panasonic WV SW458 360° camera replaces the fixed unit and is recessed as deeply as possible for a cleaner aesthetic, performance and control benefit from Humphree intruders Atos version, CMC electric stabilizers, a hydraulic bow thruster, an upgraded steering system, and larger rudders that notably improve low speed maneuverability, hotel systems were enhanced with two upgraded water heaters of 100 L each as well as predisposition for a watermaker, a remote watermaker control panel installed

in the crew mess, and an Idromar watermaker rated at 130 l/h 34 gals/h, noise and vibration were tamed with additional soundproof insulation between the salon and engine room, between the master cabin and engine room, between the master cabin and the dining/galley, on the forward bulkhead in the master cabin, and on the engine room vent boxes in the salon, on deck a polished stainless steel anchor replaces the standard unit paired with 125 metres of anchor chain and gutters were added to the chain locker hatches with dedicated hooks for mooring lines as per 84 20, a permanent strap position marker system comprising fourteen stainless steel triangles was installed on the hull in line with the docking plan, safety and style at night are elevated by a comprehensive underwater lighting suite totaling twenty-two lights: five under the swim platform THX1201 WHITE LIGHT, eight per side along the hull TIX301 WHITE LIGHT, plus one additional light under the swim platform for a total of six THX1201 WHITE LIGHT, all lights are tied to a single switch on the aft deck with a second switch in the master cabin placed per the lighting plan, exterior detailing includes a single waterline in custom Palinal G936, higher handrails along the side decks, an additional pair of midship cleats on the forward bulwarks, repositioned standard side boarding gates moved aft between the howseholes with forward side boarding gate positions as per 84 19, and side lockers beside the bow seating area, all external tables were executed in teak per the Benetti sample at twenty percent gloss, navigation lights were moved from their standard position to the base of the arch and upgraded to low profile Lopolight 300 001 and Lopolight 300 002 units, branding was refined with no logos on antennas, no logos on helm seats, and seat logos where applicable color matched to the leather, the aft shower was repositioned into the starboard locker adjacent to the swim platform, on the foredeck a breakfast table replaces standard coffee tables with a precise six inch gap between the tabletop and the fiberglass settee and umbrella bases are integrated within the table bases, the forward sun pad features a separate removable section above the escape hatch of the VIP cabin, interior

refinements include deletion of the standard bar cabinet in favor of the Azimut 88 bar cabinet its top finished in marble plus a stainless steel pole and predisposition for a 32" TV, storage was further expanded with a dedicated locker on the starboard side beneath the stairs to the flybridge, propulsion efficiency is sharpened with Class S propellers specified as S&S five blade units as per 84 21, power generation is upgraded to ONAN generators compliant with EPA Tier 3 in lieu of standard Kohler, for deck flow the aft salon access door was revised to open from starboard side to portside.

Exclusions

Exclusions: owner's personal items.

Disclaimer

The details of this yacht are offered in good faith but cannot be guaranteed; neither accuracy nor the vessel's condition is warranted, this yacht is offered subject to prior sale, price change, or withdrawal without notice, and it is presented as a convenience to clients and is not intended to convey direct representation of a specific yacht for sale.

CONTACTS

Shestakov Yacht Sales is a brokerage company specializing in the sale and service of yachts worldwide. The company offers services for buying and selling both new and used motor yachts, sailing vessels, and luxury superyachts. They also provide yacht registration, insurance, technical maintenance, crew selection, and charter organization services across the U.S., Canada, Latin America, the Caribbean, and the Bahamas.

The founder and lead broker of the company is Andrey Shestakov, a licensed and certified expert with extensive experience in marine engineering and shipbuilding.

The company has an extensive network of partnerships with major yacht manufacturers worldwide and provides services in multiple languages, including Russian, Ukrainian, Spanish, and English. The office is in Dania Beach, Florida, USA.

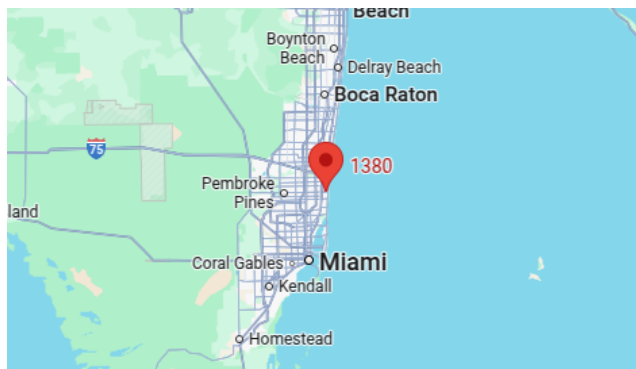
For more information and to view available yachts, you can visit the company's official website: <https://shestakovyachtsales.com>

Contact details

Phone: +1(954)274-4435

Email: andrey@shestakovyachtsales.com

Address



1380 Weeping Willow Way, Hollywood,
Florida 33019