

## STOTSEA - OCEAN ALEXANDER



**Builder:** [Ocean Alexander](#)

**LOA:** 84' 0" (25.60 m)

**Year Built:** 2020

**Beam:** 20' 0" (6.22 m)

**Model:** 84R

**Min Draft:** 17' 6" (5.33 m)

**Price:** \$5,495,000 USD Subject to change.

**Max Draft:** 19' 5" (5.92 m)

[See full listing on our website](#)

**Location:** West Palm Beach, United States

**Cruising Speed:** 22 Knots (25.32 MPH)

**Max Speed:** 26 Knots (29.92 MPH)

---

# TABLE OF CONTENTS

---

**OVERVIEW ..... 3**

**SPECIFICATIONS ..... 4**

    Basic Information ..... 4

    Dimensions ..... 4

    Speed, Capacities and Weight ..... 4

    Hull and Deck Information ..... 5

    Engine Information ..... 5

**GALLERY ..... 6**

**DETAILED DESCRIPTION ..... 19**

**CONTACTS ..... 29**

## OVERVIEW

---

Experience peerless indulgence and forward-thinking design aboard the 2020 Ocean Alexander 84R, a showpiece from the brand's Revolution line. This 84-foot luxury motor yacht elevates the superyacht standard, fusing poise and purpose for owners who crave exploration with undeniable sophistication.

Beginning aft, a hydraulic swim platform converts at the touch of a button into a full beach club, complete with a freshwater shower and tailored storage for paddleboards, fishing gear, and assorted water toys. From here, the main-deck salon unfolds into generous social zones with uninterrupted sightlines to the foredeck lounge, shaping an open, welcoming environment ideal for entertaining or quiet reprieve. Below, four opulent staterooms—including a dramatic full-beam owner's suite—deliver tranquil privacy for family and guests. Up top, choose an open flybridge or an enclosed skylounge; the latter pampers with a six-person settee, three ergonomic helm chairs, and a cutting-edge helm station. Aft, the sundeck invites long days outside with a capacious grill, abundant chilled and dry stowage for beverages, versatile seating, and an optional hot tub for soaking in sweeping panoramas. Confidence comes standard thanks to wide, well-protected side decks, substantial stainless-steel rails, and a quickly reachable life raft, ensuring safe movement in any weather. Meticulous craftsmanship, premium materials, and advanced technology unite to deliver style, performance, and practicality in an effortlessly capable bluewater cruising yacht.

Positioned smartly for today's market, this 2020 Ocean Alexander 84R is poised to create unforgettable moments at sea. Enquire for current pricing and to arrange a private viewing, and claim your opportunity to own a true revolution in luxury yachting.

# SPECIFICATIONS

---

## Basic Information

---

**Model Year:**  
2020

**Country:**  
United States

**Year Built:**  
2020

## Dimensions

---

**LOA:**  
84' 0" (25.60 m)

**Beam:**  
20' 0" (6.22 m)

**Min Draft:**  
17' 6" (5.33 m)

**Max Draft:**  
19' 5" (5.92 m)

## Speed, Capacities and Weight

---

**Cruise Speed:**  
22 Knots (25.32 MPH)

**Water Capacity:**  
666 Gallons

**Max Speed:**  
26 Knots (29.92 MPH)

**Fuel Capacity:**  
2378 Gallons

## Hull and Deck Information

---

**Hull Material:**

Fiberglass and Plastic Yachts

**Hull Designer:**

N/A

**Deck Material:**

Fiberglass

**Interior Designer:**

N/A

**Hull Configuration:**

N/A

## Engine Information

---

**Engines:**

1

**Manufacturer:**

MAN

# GALLERY



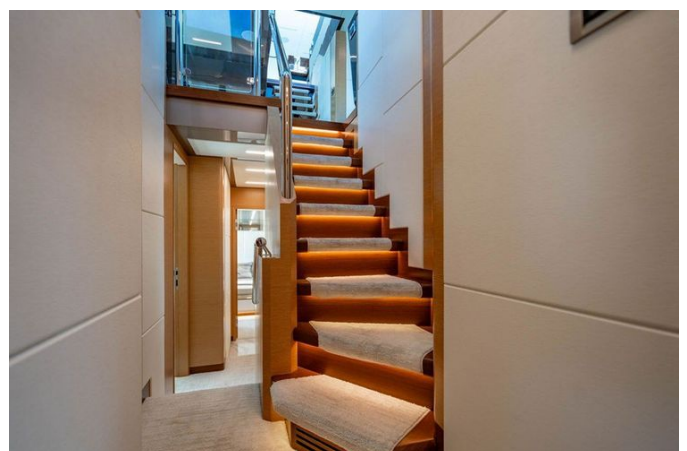
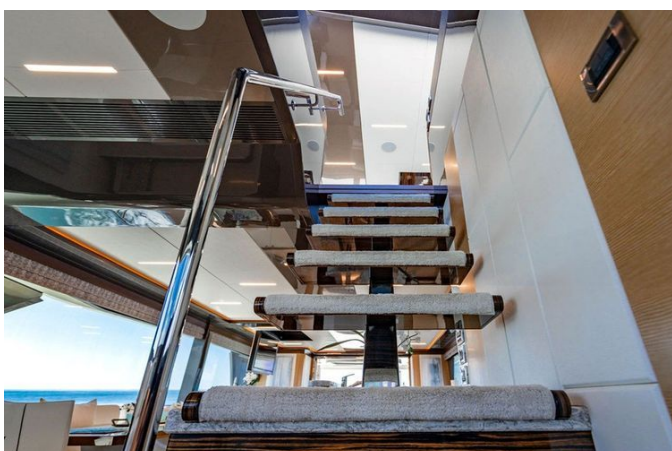






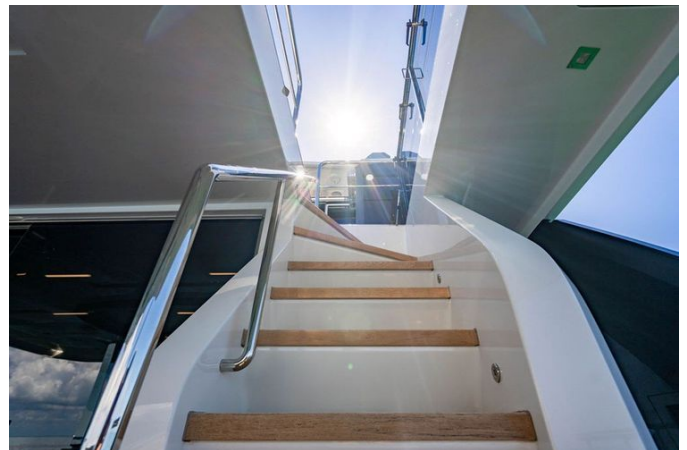


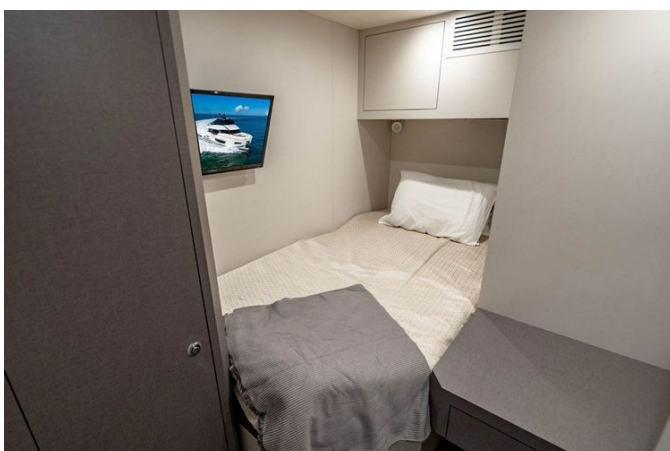
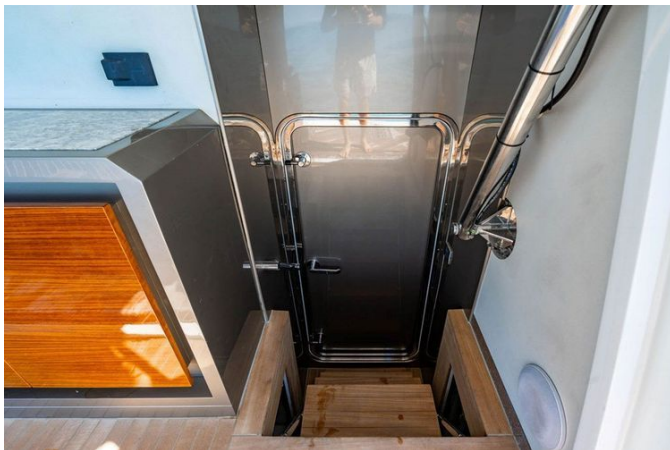
















---

# DETAILED DESCRIPTION

---

## Detailed description

---

Crafted to Ocean Alexander's exacting standards, this yacht is engineered for quiet, comfort and unwavering strength, beginning with a multi-layered sound and vibration reduction strategy that uses reflective and absorptive insulation, dampening materials, air pockets, and flexible isolation mounts to deliver noise and vibration levels that often range from one-half to one-tenth of ISO-6954 requirements. The structure is anchored by longitudinal and lateral fiberglass stringers filled with high-density foam, and every exterior fitting is executed in 316 stainless steel or to the manufacturer's specification. The hull and superstructure benefit from fiberglass built with infusion lamination technology, seamless frameless windows, and vinylester resin with high-density structural foam that offers superior thermal and acoustic insulation more commonly found on yachts over one hundred feet. A reinforced collision bulkhead and weather-tight bulkheads add further sound and temperature control, while the painted exterior showcases professional-grade Alexseal polyurethane and epoxy primers for unsurpassed gloss and color retention; Alexseal provides guaranteed color matching with no fading or yellowing and minimal maintenance—just soap and water for the first three years—an Ocean Alexander standard, not an upcharge. Marine-grade aluminum beams span floors, walls and ceilings for a monolithic, rigid structure that minimizes motion and abrasive underway sounds and enables some of the industry's largest uninterrupted glass expanses. Cross-knit directional carbon fiber reinforces high-stress zones to enhance structural integrity and torsional strength, and a sculpted fiberglass staircase with teak steps links the cockpit to the flybridge with elegance and security. Below the waterline, a black boot stripe accents a hull whose interior structural

components are fully bonded. The bottom is professionally faired and protected by three coats of Seahawk primer, a high-build epoxy barrier coat and three coats of Seahawk self-polishing bottom paint—another Ocean Alexander standard often optional elsewhere. Bronze through-hulls, a fully bonded structure, and a complete approach to detail underscore durability and safety.

Power comes from a MAN V12 1900 HP engine managed from a single skylounge control station with complete instrumentation and modern, illuminated switching, complemented by a custom StationKeeper position-and-heading hold system for confidence at anchor or in tight quarters. Plug-in, wired engine remotes are fitted on the aft deck and flybridge for fingertip control while docking. The engine room is kept dry and clean by Delta T intake and exhaust fans with demisters to remove moisture from airflows, and manually adjustable, reversible Delta T exhaust fans are mounted in the superstructure rather than in the hull sides to minimize water and salt intrusion—an Ocean Alexander hallmark. Engine-hour meters, electronic engine controls, and an engine alarm system for oil pressure and temperature are provided, with complete dual-station instrumentation, stainless steel rails alongside each engine, and wet exhausts. Water temperature, oil pressure, hour meters and start/stop controls are duplicated in the engine room and at the pilothouse, with remote start/stop in the pilothouse as well. Dripless shaft seals and dripless rudder post seals minimize maintenance. Ocean Alexander's aerospace-inspired "hard-coat" exhausts are autoclave-cured and fabricated from AL 6XN alloys—technology derived from Saturn V rocket nozzle metallurgy—executed to stringent military standards for sustained performance.

Electrical power at sea is assured by a Kohler 32 kW genset whose water-drop exhaust, by Centek, Marine Exhaust Co. or equivalent, reduces noise and vibration; the genset is resiliently mounted within a sound shield with vibration dampers and is plumbed with gas/water separators—another Ocean

Alexander standard approach to refinement.

Anchoring and mooring equipment reflect the yacht's voyaging intent: dual hydraulic windlasses and dual stainless steel 75 kg plow anchors each with two hundred feet of half inch HT chain and chain stoppers; precise chain counters; and two vertical electric rope winches on the aft deck that are standard here but often optional elsewhere. A hands free anchor chain wash system cleans chain during anchor operations, preserving finish and easing maintenance.

Steering and running gear are equally robust. Hydraulic steering controls stainless steel rudders supported by bronze struts with cutlass bearings.

High performance, computer designed, CNC machined propellers deliver efficient thrust, protected by zincs on rudders and shafts. The wheel at the interior helm is wrapped in Ultraleather for long passage comfort, and three Stidd electric helm seats in the skylounge provide ergonomic support.

Propeller shafts are premium Aqua 22HS, a high grade austenitic stainless alloy whose corrosion resistance equals Aqua 22 and whose strength approaches Aqua 17.

Stability and precise low speed handling are guaranteed by Sidepower hydraulic stabilizers with zero speed functionality, driven by power take offs on both engines for true redundancy, and Sidepower 30.8 HP bow and 30.8 HP stern thrusters. Ocean Alexander's proprietary engineering extends to stainless steel rails flanking the engines and stainless steel mounting plates that elevate torsional rigidity and preserve alignment for reduced vibration under high torque loads. Fire protection is comprehensive, with an automatic extinguisher system and engine shutdown. A centralized oil change system services both main engines and the genset. All engine room and bilge spaces are primed and finished in a durable polyurethane system for a clean, bright workspace. Heavy duty commercial grade pantograph wipers with washers and intermittent control keep the screen clear. Color coded piping organizes fuel, water and hydraulics. A commanding Buell air horn announces the yacht's

presence, and aluminum diamond plate flooring in the engine room ensures secure footing. Detailed stringer work in the engine room and lazarette, plus Ocean Alexander's proprietary dry bilge ventilation system with dedicated exhaust to the exterior, keep bilges continuously ventilated, mildew free and healthful, exhausting condensation outside the yacht. Drive train components—shafts, rudders and related hardware—are deliberately oversized, typically one class above competitors, to enhance handling and longevity.

The plumbing systems are equally advanced. A Headhunter pressure freshwater system feeds two millimeter thick 316 stainless steel tanks with sight gauges, while freshwater washdowns forward, aft and on the boat deck simplify maintenance. A dockside water connection is provided for shore services. Hot water arrives via two forty gallon water heaters with high density fiberglass insulation and dual high efficiency elements that cut heat up time by fifty percent. Long range autonomy is supported by a Sea Recovery watermaker rated at nine hundred gallons per day.

Fuel is stored in 4.5 mm 5052 aluminum tanks with sight gauges, designed and tested to International Standards 33CFR 510(a), and monitored by high and low fuel level alarms. Dual Racor fuel/water separators with Y valves protect the generator. Ocean Alexander's venting and catchment design captures "burps" or overflow events to prevent environmental incidents that can trigger fines or insurance complications—another thoughtful standard. A Gulfcoast fuel polishing system derived from the U.S. Military Abrams M1 tank design keeps fuel pristine.

Drainage is intelligently centralized with a common system for the bar sink, showers, bilges and exterior decks. Automatic bilge pumps are installed forward and aft of the engine room and in each compartment bounded by weather tight bulkheads; each zone has manual/automatic switching and high water alarms. Twenty four volt shower sump pumps and a designated

dry bilge area at the engine room centerline promote order and safety. Lighted bilge areas and, where needed, integrated stainless steel ladders exemplify Ocean Alexander's human centered engineering. Blackwater is handled by a Headhunter waste treatment system rated at six hundred gallons per day.

Electrical architecture begins with heavy duty AGM batteries that operate from forty to one hundred forty degrees Fahrenheit and exhibit exceptionally low self discharge of one to three percent. A 100 amp charger, battery paralleling with control switch, a dedicated service battery switch, and engine isolation switches create a resilient DC backbone. The yacht employs a twenty four volt system, with AC outlets thoughtfully distributed throughout. All primary AC and DC wiring is clearly labeled end to end. GFI 110 volt receptacles protect all potential wet areas and, uniquely, the entire vessel is dual protected via ELCI OctoPlex breakers for belt and suspenders safety. OctoPlex, on an NMEA 2000 network, provides aerospace grade remote activation and status reporting of AC/DC breakers, monitoring of source voltage, frequency and amperage, with visual and audible alerts. Enhanced breaker functionality includes no load indication, dimming, and usage data on user configurable touch screens. Brownout safe auto load shedding prioritizes operator designated essentials such as navigation while gracefully switching non critical systems off. Integrated vessel monitoring tracks main access doors, tank levels, bilges, and battery current, voltage and temperature. Shore power enters via two 100 amp transom receptacles with Cablemasters and Iso Boost that isolates and boosts inconsistent dock power, eliminating the need for polarity alarms and galvanic isolators—standard here, often optional elsewhere.

Air conditioning throughout is by Dometic systems rated for extreme tropical climates with reverse cycle functionality down to forty degrees Fahrenheit seawater; the refrigerant is Montreal Protocol compliant. Where possible, custom ceiling panels conceal supply outlets to shorten duct runs, improving

cooling efficiency by over twenty percent and reducing noise by more than seven decibels; the result is an Ocean Alexander standard of cool, hushed comfort without visual clutter.

Navigation and situational awareness come standard in a package valued well over one hundred thousand dollars on many competitors. At its heart is the Garmin 8600 Series black box system driving a twenty four inch touchscreen, supplemented by a Garmin GRID remote input on the helm chair, a 25 kW open array radar, a GHC 20 autopilot, VHF and card reader, and a black box sounder. A complete AIS integrated with NMEA GPS enhances traffic awareness. Three Garmin marine cameras—two in the engine room and one on the aft deck—assist with monitoring and maneuvering. Entertainment and connectivity are just as robust, with a Tri band HD7 satellite system and DIRECTV receivers, a five inch Ritchie compass for classic reference, and an iPad loaded with the Garmin app for redundant navigation control and viewing. The N2KView safety and security monitoring suite enables wireless operation and alarm visibility of OctoPlex and navigation data from Apple iPad or Android devices with fully customizable layouts and remote cellphone notifications. The system monitors main engines and generator parameters, AC distribution, DC house bank health, engine room weather tight bulkhead doors, all tank levels, fire status, bilges (including high water), and exterior door sensors—again an Ocean Alexander standard, not an upcharge.

Lighting is purposeful and beautiful: twenty four volt LED fixtures of aerospace quality are tuned to Ocean Alexander's preferred color temperature, with international navigation lights and four stainless steel pop up bow lights. A Francis searchlight throws 2,800,000 peak candlepower downrange, and spreader lights illuminate both swim step and flybridge deck. Seven high output LED underwater lights enrich evenings at anchor.

The entire vessel is fully bonded and grounded, with copper straps running the length of the hull; engines, generators, metallic through hulls, strainers and

pump bodies are tied into this network with a minimum of 8 AWG wire.

Additional standards further elevate ownership. Dual Iso Boost shore power transformers isolate and stabilize dock power for safety and equipment protection. A complete entertainment system and a Panasonic intercom with digital handsets provide ship wide communication, while a commercial grade 4G SIM capable Wi-Fi router drives the onboard intranet.

Inside, the OA 84R's unique bow and cabin forward design grants approximately ten to eighteen percent more usable space than similar length competitors, rivaling many ninety to ninety five foot yachts. Wood paneling and cabinetry are meticulously finished, and the interior's removable ceiling panels feature diamond faceted edging for a tailored, architecturally crisp look. The interior helm station and floating display pod are penned by Evan Marshall, blending wood, Ultraleather and ergonomic perfection. Windshield defrosters, a weather tight side deck door, carbon monoxide and smoke detectors, designer pulls on drawers and cupboards, and fabric covered lower walkway walls speak to thoughtful detail. Hidden hinges grace the cabinetry; hanging lockers incorporate dual locking mechanisms; and commercial quality Energy Star washer and dryer are aboard. Stainless steel hardware is used throughout, with USB power plugs at the helm and the master's nightstands. The Antimony decor palette pairs oak and ebony woods, and electric shades with remotes dress the salon, dining and master windows (master head excluded).

The salon is a triumph of light and proportion. Evan K. Marshall designed furniture includes a sofa with concealed storage drawers, a custom salon table, wood paneling and painted cabinetry where appropriate, and stone countertops at the wet bar and storage consoles. Vast, strengthened windows—made possible by marine grade aluminum beams—flood the space with views, and, where possible, ceiling vented air conditioning maintains an unobstructed outlook. Custom wood flooring replaces carpet in the salon,

dining and forward salon/skylounge, where a stone topped cabinet integrates a wet bar, refrigerator, icemaker, lacquered door and storage, accompanied by a flip down TV, wood valances, a sofa and table, and a chart desk with chair.

The master stateroom is forward thinking luxury: a king sized berth with independently coiled his and hers sections limits motion transfer—an Ocean Alexander specialty—flanked by two nightstands with stone tops and complemented by stone topped port and starboard cabinetry. A built in vanity sits to starboard and a sofa to port; a safe is concealed in a hanging locker, and full height, cedar lined wardrobes illuminate automatically. A custom designed window floods the space with light. The master head features dual sinks, a spacious shower, and a dimmable LED vanity mirror.

Guest accommodations include a VIP with a queen berth and vanity with mirror, and port and starboard guest staterooms with side by side conversion berths. Both guest cabins include dressing mirrors, cedar lined hanging lockers with automatic lighting, and en suite heads with stall showers. Throughout the heads, wood walls and cabinetry meet stone countertops; china sinks, Tecma toilets with Ocean Alexander's proprietary "toilet lock out" that prevents flushing when the holding tank is full (with tankage status and alarms viewable via N2KView), seamless fiberglass stall showers with one piece crystal clear glass doors and minimalist water strips create the signature Ocean Alexander "Crystal Shower." Custom faucets, fixtures and bathroom hardware pair with low noise extraction fans and stone flooring for refined function.

Crew spaces redefine the category. Ocean Alexander's innovative design yields the largest crew quarters in class, cleverly doubling as a cabana with a day head and lounge for waterside living without re-entering the main deck. A cedar lined, auto lit hanging locker, a kitchenette with sink, cooktop, microwave and refrigerator/icemaker, additional storage, and drawers under bunks support long stays, while a second commercial grade/capacity washer

and dryer add convenience.

The galley is a culinary workstation with smart storage under the stairs, stone countertops, painted panels, and positive latch doors or proprietary drop lock drawers that keep contents secure underway. Stone flooring, abundant cabinetry with hidden hinges, a large single sink with pull out faucet on the island, and a dish locker complete the foundation. Premium appliances include a thirty six inch Fisher & Paykel refrigerator, a thirty inch Jenn Air over the range microwave, a thirty inch Jenn Air electric cooktop and matching thirty inch oven, a fifteen inch Whirlpool trash compactor, a Jenn Air dishwasher, a fourteen inch Sunpentown wine cooler, and a Seagull water purifier—an ADEX award winning system filtering to 0.1 microns with EPA certified microbiological purification.

Outside, a hardtop crowns the flybridge and is serviced by a dedicated custom stainless steel ladder to all navigation electronics—standard here, optional elsewhere—beneath fixed ceiling panels on the main deck. Handholds are confidence inspiring, with two inch elliptical 316L stainless steel rails on the main deck and one and a half inch rails on the flybridge; the elliptical profile conforms to the hand for superior grip, comfort and safety. Stainless steel anchor rollers, a fiberglass staircase from the cockpit to the flybridge, and twin wet bars—with sink, refrigerator and icemaker—on the bridge and aft deck elevate entertainment. A four person Jacuzzi graces the bridge deck; custom Paola Lenti exterior furniture completes the lounge, and a full teak decking package ties the spaces together. An electric stainless steel salon door opens to the aft deck and features a safety light curtain that senses obstructions—protecting grandchildren and pets—and a foot kick switch for hands free operation. Stainless steel bow and fiberglass reinforced plastic stern staffs fly flags with pride. The cabin forward layout creates the largest flybridge in its class by moving the steering station forward for better sightlines and more space to entertain; a lighted OA logo adds a signature glow by night. Aft deck amenities include a shower and dockside water inlet, side boarding

gates, a forward sunpad and sofa with table, and manual mesh awnings for both flybridge and bow that set up on custom stainless steel poles with dedicated built in storage. An aft deck custom ceiling feature adds sculptural interest. Stainless steel transom gates protect pets and children, while custom exterior covers and windshield mesh safeguard upholstery and the barbecue. The bridge deck barbecue is a twenty four inch Electric Chef electric grill. Compressed air outlets in the engine room and aft deck simplify maintenance. A bridge deck hatch, an outdoor Beach Club with a swing up transom that becomes a shade canopy, a spare parts package, a bow projector and screen for movie nights, and an automatic robot exterior glass cleaner with spares round out the lifestyle luxuries.

Turn key readiness is part of the promise: a complete safety kit with first aid, fenders, lines, flares, throw ring, fire extinguishers and bell; a wheel puller for ship propellers; a ten man life raft; two complete sets of bed linens with pillows and towels for all berths; dinnerware including dinner, salad and dessert plates, soup bowls, teacups and saucers, a casserole dish, and salt and pepper shakers; flatware including steak knives, dinner knives, forks, spoons and dessert/teaspoons plus salad forks with serving spoons and fork; table placemats, napkins, and water, white, red and champagne glasses; and a comprehensively stocked galley with cookware, pans, toaster, electric mixer, measuring cup, rubber, metal and plastic spatulas, mixing bowls, chef's knives, cutting boards, coffee machine and iron.

From its proprietary engineering to its lavish finishing touches and the steadfast support of Shestakov Yacht Sales, this Ocean Alexander elevates every nautical mile with authority, serenity and style.

# CONTACTS

---

Shestakov Yacht Sales is a brokerage company specializing in the sale and service of yachts worldwide. The company offers services for buying and selling both new and used motor yachts, sailing vessels, and luxury superyachts. They also provide yacht registration, insurance, technical maintenance, crew selection, and charter organization services across the U.S., Canada, Latin America, the Caribbean, and the Bahamas.

The founder and lead broker of the company is Andrey Shestakov, a licensed and certified expert with extensive experience in marine engineering and shipbuilding.

The company has an extensive network of partnerships with major yacht manufacturers worldwide and provides services in multiple languages, including Russian, Ukrainian, Spanish, and English. The office is in Dania Beach, Florida, USA.

For more information and to view available yachts, you can visit the company's official website: <https://shestakovyachtsales.com>

## Contact details

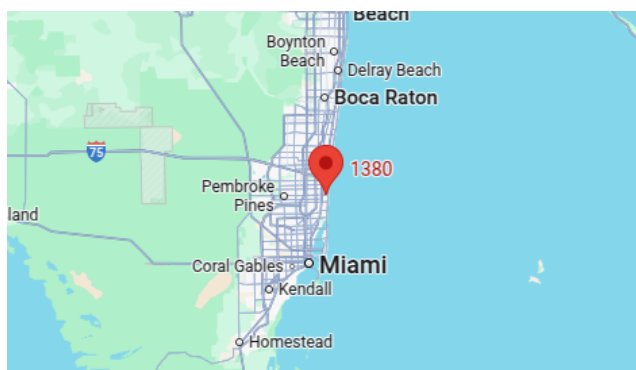
---

**Phone:** +1(954)274-4435

**Email:** [andrey@shestakovyachtsales.com](mailto:andrey@shestakovyachtsales.com)

## Address

---



1380 Weeping Willow Way, Hollywood,  
Florida 33019