

## GLORIOUS - AICON



**Builder:** [AICON](#)

**LOA:** 85' 0" (26.01 m)

**Year Built:** 2008

**Beam:** 21' 0" (6.40 m)

**Model:** 85 Flybridge

**Min Draft:** 11' 6" (3.50 m)

**Price:** \$1,766,460.19 USD Subject to change.

**Cruising Speed:** 18 Knots (20.71 MPH)

[See full listing on our website](#)

**Location:** Gold Coast, Australia

**Max Speed:** 28 Knots (32.22 MPH)

---

# TABLE OF CONTENTS

---

**OVERVIEW ..... 3**

**SPECIFICATIONS ..... 5**

    Basic Information ..... 5

    Dimensions ..... 5

    Speed, Capacities and Weight ..... 5

    Accommodations ..... 6

    Hull and Deck Information ..... 6

    Engine Information ..... 6

**GALLERY ..... 7**

**CONTACTS ..... 16**

## OVERVIEW

---

GLORIOUS is driven by dual 1,800hp Caterpillar C32 engines, reaching a top speed of 28 knots. With a beam of 21'1", her fiberglass hull offers both resilience and a streamlined look on the water. Her impressive fuel capacity of 8,000 liters supports long-distance journeys, while the 2,000-liter freshwater tank and 800-liter holding tank provide convenience and independence for extended trips. Bow and stern thrusters ensure effortless handling, complemented by advanced navigation and electronics at her dual helms—one on the flybridge and one below, plus an aft port side docking station.

The expansive salon boasts three sumptuous cream leather sofas, a SONOS system, and a Bose Lifestyle Surround Sound setup, paired with Samsung flat screens for entertainment. The dining area, featuring a large glass-topped table for six, offers a sophisticated setting for meals. Bright and airy, large, rounded portholes and a full-height starboard window invite the sea's beauty into this main deck living space, creating a delightful atmosphere. Hardwood floors enhance the elegant vibe, with carpeting adding coziness to the lounge and formal dining area. Forward of the salon and dining area, the fully equipped galley is easily accessible yet discreetly positioned, providing all the facilities needed to craft gourmet dishes while maintaining the open, chic design.

Below deck, GLORIOUS accommodates 8 guests across four ensuite staterooms, with room for an additional 3-4 guests in the two forward cabins if used as owner/operator. The midship master suite features a spacious queen bed, ensuite bathroom with dual sinks, a large shower, and a bidet, plus a generous walk-in closet, entertainment system, and vanity table. The forward VIP stateroom includes a comfortable double bed, closet, and ensuite. The port and starboard guest staterooms each have twin beds, entertainment systems, and ensuite bathrooms. Crew or additional guest quarters are located forward

of the lower helm, comprising a dinette with a small galley, a double cabin, a bunk cabin, and a shared bathroom.

Perhaps GLORIOUS' most remarkable feature is her flybridge. An exceptional space for socializing and unwinding, the flybridge includes a spa, ample seating, a wet bar, secondary helm, electronic sunroof, a Davit, and plenty of storage for her Zodiac tender. Forward on the bow, you'll find more lounging space with uninterrupted views. Additional al fresco dining is available on her aft deck, equipped with a sunshade for protection from the elements, allowing you to enjoy this stunning area. GLORIOUS ensures comfort throughout, fitted with a sophisticated Enafroid water-chilled air conditioning system.

This magnificent yacht combines luxury, power, and smart enhancements, delivering an exclusive experience on the water. Explore yacht sales in the current boat location and consider this opportunity to buy a yacht that embodies elegance and performance.

# SPECIFICATIONS

---

## Basic Information

---

**Category:**  
Motor yachts

**Year Built:**  
2008

**Model Year:**  
2008

**Country:**  
Australia

## Dimensions

---

**LOA:**  
85' 0" (26.01 m)

**Beam:**  
21' 0" (6.40 m)

**Min Draft:**  
11' 6" (3.50 m)

## Speed, Capacities and Weight

---

**Cruise Speed:**  
18 Knots (20.71 MPH)

**Water Capacity:**  
528.34 Gallons

**Max Speed:**  
28 Knots (32.22 MPH)

**Fuel Capacity:**  
2113.38 Gallons

## Accommodations

---

**Sleeps:**

8

**Crew Berths:**

4

**Total Heads:**

2

## Hull and Deck Information

---

**Hull Material:**

Fiberglass and Plastic Yachts

**Hull Designer:**

Aicon Yachts

**Deck Material:**

Fiberglass

**Interior Designer:**

N/A

**Hull Configuration:**

Monohull

## Engine Information

---

**Engines:**

2

**Engine Type:**

Inboard

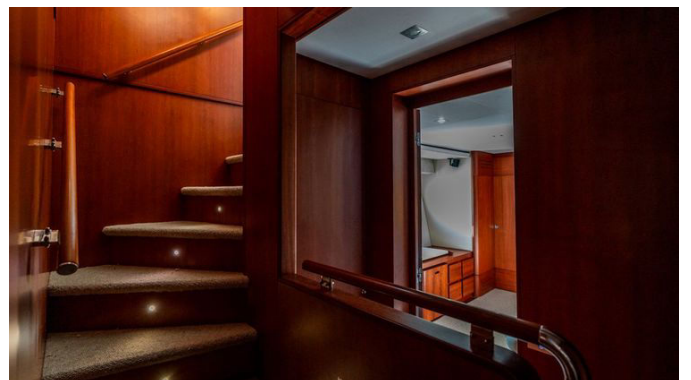
**Manufacturer:**

Caterpillar

**Fuel Type:**

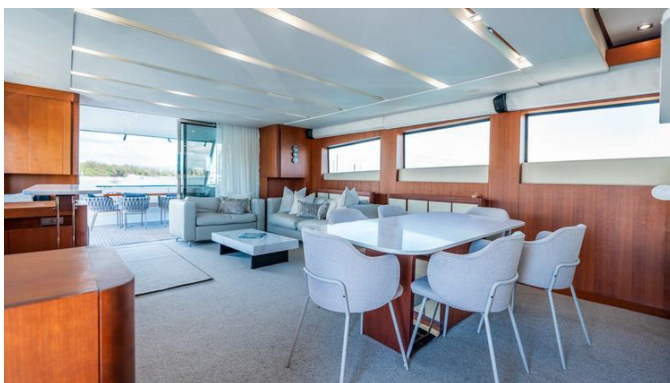
Diesel

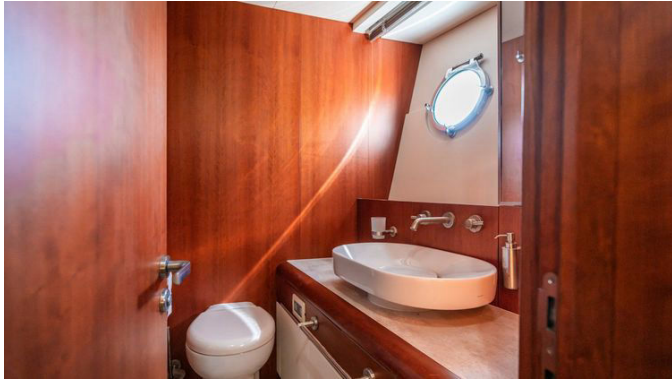
# GALLERY



















# CONTACTS

---

Shestakov Yacht Sales is a brokerage company specializing in the sale and service of yachts worldwide. The company offers services for buying and selling both new and used motor yachts, sailing vessels, and luxury superyachts. They also provide yacht registration, insurance, technical maintenance, crew selection, and charter organization services across the U.S., Canada, Latin America, the Caribbean, and the Bahamas.

The founder and lead broker of the company is Andrey Shestakov, a licensed and certified expert with extensive experience in marine engineering and shipbuilding.

The company has an extensive network of partnerships with major yacht manufacturers worldwide and provides services in multiple languages, including Russian, Ukrainian, Spanish, and English. The office is in Dania Beach, Florida, USA.

For more information and to view available yachts, you can visit the company's official website: <https://shestakovyachtsales.com>

## Contact details

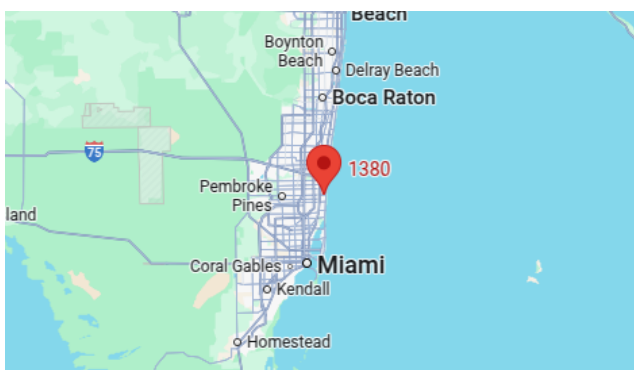
---

**Phone:** +1(954)274-4435

**Email:** [andrey@shestakovyachtsales.com](mailto:andrey@shestakovyachtsales.com)

## Address

---



1380 Weeping Willow Way, Hollywood,  
Florida 33019