

REKOMA - DL YACHTS - DREAMLINE



Builder: [DL YACHTS - DREAMLINE](#)

LOA: 85' 0" (26 m)

Year Built: 2018

Beam: 21' 0" (6.65 m)

Model: N/A

Max Draft: 9' 3" (2.83 m)

Price: \$6,500,000 USD Subject to change.

Cruising Speed: 17 Knots (19.56 MPH)

[See full listing on our website](#)

Location: Limassol, Cyprus

Max Speed: 24 Knots (27.62 MPH)

TABLE OF CONTENTS

OVERVIEW	3
SPECIFICATIONS	5
Basic Information	5
Dimensions	5
Speed, Capacities and Weight	6
Accommodations	6
Hull and Deck Information	6
Engine Information	7
GALLERY	8
DETAILED DESCRIPTION	12
CONTACTS	16

OVERVIEW

Commanding and contemporary, this 2018, 85-foot luxury motor yacht resides in Cyprus and was conceived for effortless Mediterranean passages. Built in GRP/fiberglass composite on a refined semi-displacement hull, she marries poised lines with practical seaworthiness, reaching a confident maximum of 24 knots and settling into an efficient 17-knot cruise, propelled by reliable twin MAN engines.

A 21-foot beam supplies generous interior volume and a sense of calm throughout spaces shaped by Team For Design – Enrico Gobbi. The result is a serene, modern environment that celebrates natural light and openness, where well-scaled lounges invite relaxed conversation and elegant entertaining. Vast windows draw the sea into the living areas, while delicate detailing and handcrafted finishes quietly proclaim her Italian design heritage. Outside, expansive decks encourage sun-soaked days and languid evenings. The aft areas are arranged for shaded alfresco dining at anchor, and the foredeck becomes a private retreat for morning coffee or sunset aperitifs. Each social zone has been carefully configured so guests remain connected to the water and to one another, whether cruising or anchored in a hidden cove.

Accommodation is arranged for up to eight guests, providing the privacy and comfort expected of a true luxury yacht, while dedicated crew quarters with two cabins for up to three professionals ensure discreet, five-star service and seamless operation. Practicality has been thoughtfully integrated—ample fuel and water capacities enable extended coastal runs without compromise, and the solid GRP construction supports quiet, assured cruising across a range of conditions.

From short weekend escapes to extended East Mediterranean explorations, this 85-footer offers an inspiring platform for family moments and refined entertaining. She embodies the hallmarks of a modern flybridge motor yacht:

contemporary styling, intelligent volume, seakindly semi-displacement performance, and the craftsmanship that makes every voyage feel effortless.

Keywords: Luxury Motor Yacht, Flybridge Motor Yacht, Semi-Displacement, Mediterranean Cruising, GRP/Fiberglass Composite, MAN-Powered, 85ft Yacht, Private Yacht, Performance Cruiser

SPECIFICATIONS

Basic Information

Category:
Motor yachts

Year Built:
2018

Sub category:
Motor Yacht

Country:
Cyprus

Model Year:
2018

Dimensions

LOA:
85' 0" (26 m)

Max Draft:
9' 3" (2.83 m)

Beam:
21' 0" (6.65 m)

Speed, Capacities and Weight

Cruise Speed:

17 Knots (19.56 MPH)

Water Capacity:

356.63 Gallons

Max Speed:

24 Knots (27.62 MPH)

Fuel Capacity:

2113.38 Gallons

Gross Tonnage:

145 Pounds

Accommodations

Sleeps:

8

Crew Berths:

3

Crew Cabin:

2

Hull and Deck Information

Hull Material:

Fiberglass and Plastic Yachts

Hull Designer:

N/A

Deck Material:

GRP

Interior Designer:

Team For Design - Enrico Gobbi

Hull Configuration:

Semi-Displacement

Engine Information

Engines:

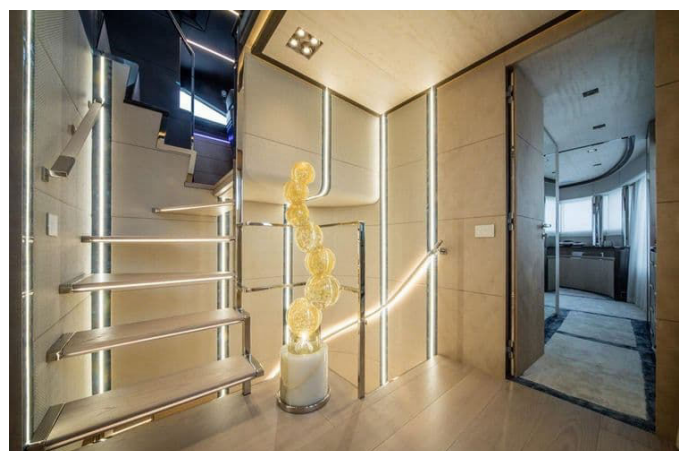
2

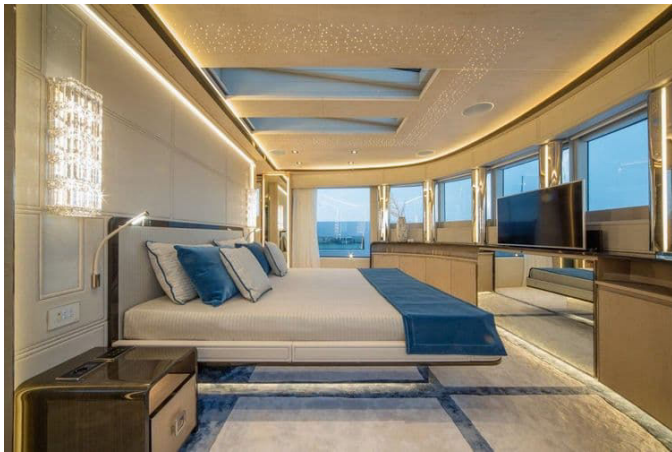
Manufacturer:

MAN

GALLERY









DETAILED DESCRIPTION

Standard equipment

Power is assured by two generators rated 2 x 27 kW at 230 V and 50 Hz, feeding comprehensive air-conditioning throughout and guaranteeing dependable hotel services under way and at anchor. Command of the yacht is centralized through a 15-inch touchscreen in the pilothouse that oversees all ship systems, complemented by four dedicated engine touch displays—two positioned in the pilothouse and two on the flybridge—and a Simrad autopilot that delivers effortless precision when steering. Navigation and situational awareness rest on three Raymarine GS165 multifunction displays, with two at the pilothouse and one on the flybridge handling radar, GPS plotting, depth and video functions, and a full suite of Raymarine i70 instruments—four units in the pilothouse and two on the flybridge—provides log, echo sounder, electronic compass and wind indication for confident passage-making. Seamless communication is provided by two fixed VHF sets for pilothouse and flybridge use, a portable VHF with cockpit charging facility and an interphone for clear onboard coordination. The helmsman benefits from a hydraulically adjustable pilot seat in the pilothouse, while essential infrastructure includes a holding tank, an automatic fire extinguishing system and two double Racor fuel filter units to ensure clean, reliable fuel delivery. A hydraulic bathing ladder invites effortless access to the sea and the pilothouse enjoys refined ergonomics and visibility to enhance command comfort. Propulsion control is refined through an electronic throttle and gearshift by Mannesmann, and deck handling is robust with a powerful foredeck anchor winch paired with an anchor wash down system plus two sturdy cockpit winches for close quarters work. Manoeuvrability is further supported by a 30 hp hydraulic bow thruster, and outdoor living is thoughtfully appointed with a waterproof stereo on the

flybridge and a flybridge barbecue complete with an integrated fridge, creating a peerless setting for open air dining and entertaining.

Pantry equipment

The galley is crafted for gourmet ease with a ceran cooking plate, a microwave/oven and a custom stainless three zone fridge, accompanied by a dishwasher, an icemaker and a convenient salon fridge bar to support effortless service. Comfort and privacy are elevated by electric blinds or curtains for both the salon and the owner's cabin, while ceramic WCs with automatic flush and under carpet noise protection in the living areas enhance onboard serenity. Valuables are secured in a safe and a powerful searchlight stands ready for night approaches. Externally, teak decking graces the cockpit, walkarounds and swim platform, while internally elegant parquet flows through the salon, dining area, pilothouse and pantry to create a cohesive, warm atmosphere. A comprehensive camera surveillance network covers the engine room, cockpit, side corridors and flybridge to maintain situational awareness at all times. Soft furnishings include twenty cushions and rain covers for all sunbeds, chairs and the windscreen, while a fixed cockpit table is paired with five wicker chairs for leisurely alfresco moments. Crew operations are supported by two crew cabins and two bathrooms equipped with a fridge, a cooking plate, a washing machine/dryer, two Radio/CD/DVD units and one 24 inch LED TV, and practical access is facilitated by side doors in the pantry and lobby plus a lighted hydraulic gangway for easy boarding. Entertainment is immersive with two LED TVs — a forty six inch in the salon and a forty inch with a folding system in the owner's cabin — plus three thirty two inch LED TVs in the VIP and guest cabins. Six universal SAT TV receivers distribute content to the salon, owner's, VIP, guest and crew cabins; two BOSE Lifestyle 535 home entertainment Hi Fi systems with Samsung CD/DVD players and a central BOSE remote serve the salon and owner's cabin;

and three BOSE 235 Hi-Fi systems with Samsung CD/DVD and central BOSE control enrich the VIP and guest cabins. Electrical reserves rely on a maintenance-free gel battery system dedicated to service, engine and start circuits, while a hydraulic tender garage with a hydraulic tender lifting system streamlines launch and recovery. Safety equipment is comprehensive, including two inflatable life rafts each rated for eight persons and a full suite of required safety gear.

Optional equipment

Engine room integrity can be elevated with an Alpha-Laval fuel cleaner and enhanced hydraulics via a Hydraulic High-Performance Package, while comfort at rest and underway is transformed by electric Zero Speed stabilizers that dramatically reduce roll. Docking finesse is delivered by a fifty-horsepower stern thruster and a fifty-horsepower bow thruster, both fitted with proportional power control for subtle station-keeping. Global connectivity is enabled by V-SAT V3IP satellite communication for telephone and e-mail, and the audiovisual experience can be upgraded to Bang & Olufsen Hi-Fi/DVD/TV systems in the salon and cabins, complemented by a waterproof 32-inch Hi-Fi/TV for the flybridge and cockpit with an electric opening system slaved from the salon for seamless outdoor entertainment. Ambience is enhanced by special-effect LED lighting inside and out with selectable colors, underwater hull lighting including a stern-side underwater camera array 4 x 4 x 4, and comprehensive light regulation across the ship. A Tropical Version upgrade and air conditioning enhanced with air treatment preserve comfort in challenging climates, while access and privacy receive refinement through salon doors offering electric, automatic and manual modes and electric side doors with parallel shifting in the owner's cabin. Interior artistry may be elevated with marble replaced by owner-selected supported onyx and the profile personalised with special hull painting. Practical redundancy and

performance options include two spare Rolla five blade propellers, a flybridge hardtop with LED lights, a full cockpit canvas enclosure and Elaspone suncovers for cockpit and flybridge seating including sunbeds and pillows. Safety and control are amplified by an emergency switchboard in the pilothouse and an expanded navigation suite of four Raymarine GS165 multifunction displays, while the captain's cabin gains a 15 inch digital active touchscreen control panel and integrated camera surveillance for centralized command. Onboard networking is future ready with internet devices, modem and WLAN access points, and protective systems include a fire and smoke warning system for all cabins and the engine room, a double anchor winch, a cabin phone, teak decking on the flybridge and a control board indicating open/closed status of portholes and hatches. Entertainment reception can be assured by a KVA TV 6 automatic digital TV SAT antenna with matching blind dome. Handling is further refined with a maneuvering joystick and a gearbox upgraded with a trolling valve for precise slow speed control. Lifestyle options include a hydraulic side balcony for the salon with an integrated sliding salon door, a Dreamline extendable hydraulic swim platform with teak decking and 600 kg lifting capacity, and a hydraulic bathing ladder with a beam of 1100 mm and Decklift function. Offshore autonomy is increased by a fully automatic watermaker rated at 200 l/h, and relaxation peaks with a flybridge Jacuzzi complete with a heating system.

CONTACTS

Shestakov Yacht Sales is a brokerage company specializing in the sale and service of yachts worldwide. The company offers services for buying and selling both new and used motor yachts, sailing vessels, and luxury superyachts. They also provide yacht registration, insurance, technical maintenance, crew selection, and charter organization services across the U.S., Canada, Latin America, the Caribbean, and the Bahamas.

The founder and lead broker of the company is Andrey Shestakov, a licensed and certified expert with extensive experience in marine engineering and shipbuilding.

The company has an extensive network of partnerships with major yacht manufacturers worldwide and provides services in multiple languages, including Russian, Ukrainian, Spanish, and English. The office is in Dania Beach, Florida, USA.

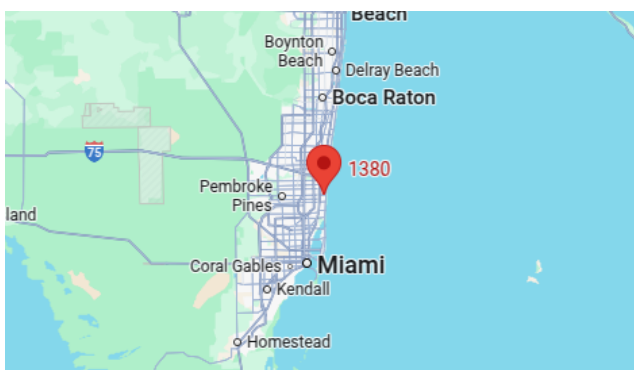
For more information and to view available yachts, you can visit the company's official website: <https://shestakovyachtsales.com>

Contact details

Phone: +1(954)274-4435

Email: andrey@shestakovyachtsales.com

Address



1380 Weeping Willow Way, Hollywood,
Florida 33019