

## C3 - NUMARINE



**Builder:** [Numarine](#)

**LOA:** 85' 0" (25.91 m)

**Year Built:** 2023

**Beam:** 21' 0" (6.60 m)

**Model:** 26XP

**Max Draft:** 22' 8" (6.92 m)

**Price:** \$5,595,000 USD Subject to change.

**Cruising Speed:** 23 Knots (26.47 MPH)

[See full listing on our website](#)

**Location:** Boston, United States

**Max Speed:** 31 Knots (35.67 MPH)

---

# TABLE OF CONTENTS

---

<b>OVERVIEW .....</b>	<b>3</b>
<b>SPECIFICATIONS .....</b>	<b>5</b>
Basic Information .....	5
Dimensions .....	5
Speed, Capacities and Weight .....	5
Accommodations .....	6
Hull and Deck Information .....	6
Engine Information .....	6
<b>GALLERY .....</b>	<b>7</b>
<b>DETAILED DESCRIPTION .....</b>	<b>19</b>
<b>CONTACTS .....</b>	<b>30</b>

## OVERVIEW

---

C3 is a 2023 Numarine 26XP commissioned for the American market, a large-volume 85-foot luxury motor yacht that marries explorer capability with flybridge elegance. Propelled by upgraded MAN engines rated at 1,800 hp, she reaches a brisk 31-knot top end while delivering a relaxed 23-knot cruise; at economical speeds her endurance stretches to an impressive 1,200 nautical miles. The profile speaks of presence and purpose: an extended hardtop crowns the sundeck, while floor-to-ceiling windows in the main salon admit abundant light and offer panoramic views that emphasize her spacious interiors.

Inside, the layout is both luxurious and practical. The main salon flows into a generous galley appointed with extensive refrigeration and stowage, and the wheelhouse is configured as a comfortable social space with lounge seating and forward raked glazing for superb sightlines underway. The aft deck centers on a substantial dining table with extensive locker space beneath, and side stairs rise to the sundeck where a second helm presides over an elevated entertaining area. There, convivial dining and lounging with custom deck furniture, a well-equipped bar and the extended hardtop combine to create an elevated retreat with true superyacht presence.

Since delivery she has been kept strictly private, cruising the Bahamas and Florida before spending summers based in Boston for seasonal New England passages — a usage profile that underscores her bluewater cruiser poise and coastal versatility. The interior has been thoughtfully refreshed: all-new carpeting throughout, new linens, a transformed dining area reconfigured as a more practical family-friendly dinette, and every stone surface upgraded to elegant quartz, leaving the yacht presenting in near new condition with a refined contemporary ambiance.

Accommodations sleep eight guests in four cabins, anchored by a full beam

owner's suite and a generous VIP, while all guest cabins on the lower deck benefit from excellent headroom that imparts the impression of a much larger yacht. Crew quarters comprise two cabins accommodating three crew. Further hallmarks include zero speed stabilizers, a hydraulic swim platform, and bespoke interior décor — attributes that reinforce her standing in both the luxury and explorer yacht categories.

She is presently completing winter maintenance in Boston, hauled out with fresh bottom paint and prepared for survey, turnkey and ready for the coming summer season. US Duty Paid.

# SPECIFICATIONS

---

## Basic Information

---

**Category:**  
Motor yachts

**Year Built:**  
2023

**Sub category:**  
Motor Yacht

**Country:**  
United States

**Model Year:**  
2023

## Dimensions

---

**LOA:**  
85' 0" (25.91 m)

**Max Draft:**  
22' 8" (6.92 m)

**Beam:**  
21' 0" (6.60 m)

## Speed, Capacities and Weight

---

**Cruise Speed:**  
23 Knots (26.47 MPH)

**Water Capacity:**  
528 Gallons

**Max Speed:**  
31 Knots (35.67 MPH)

**Fuel Capacity:**  
2906 Gallons

## Accommodations

---

**Total Heads:**

5

**Crew Cabin:**

2

## Hull and Deck Information

---

**Hull Material:**

Fiberglass and Plastic Yachts

**Hull Designer:**

Can Yalman

**Deck Material:**

GRP

**Interior Designer:**

Can Yalman

**Hull Configuration:**

Semi-Displacement

## Engine Information

---

**Engines:**

2

**Engine Type:**

Inboard

**Manufacturer:**

MAN

**Fuel Type:**

Diesel

# GALLERY

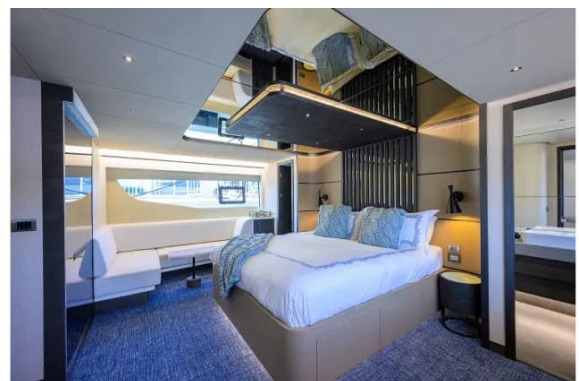
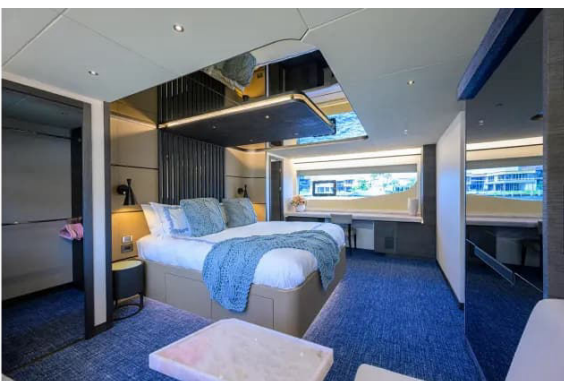
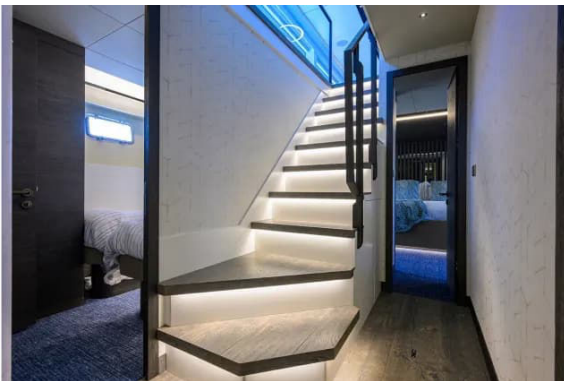




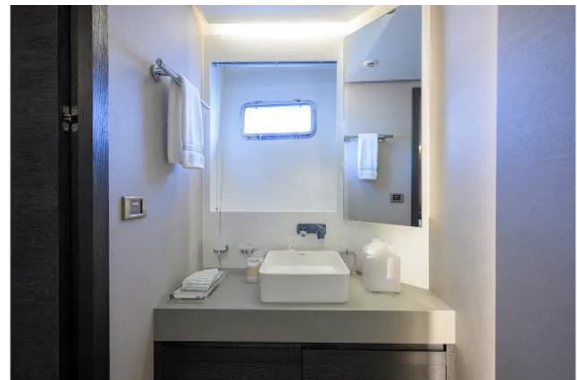
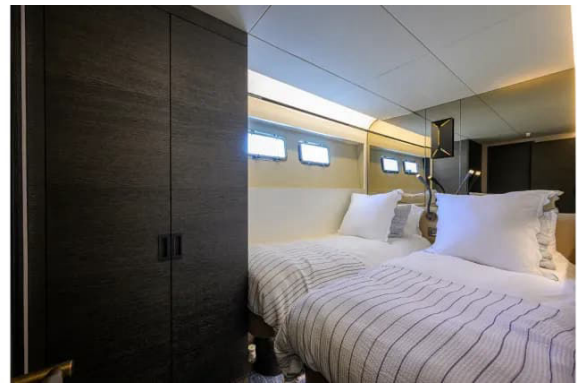
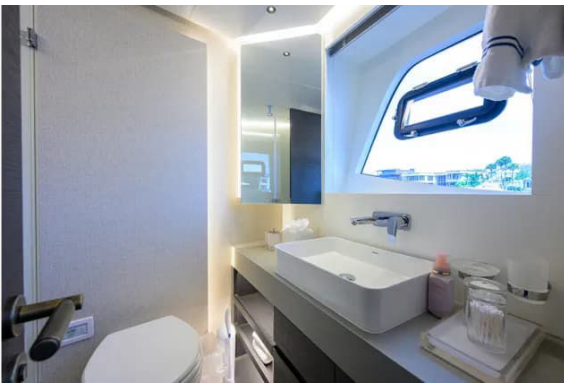






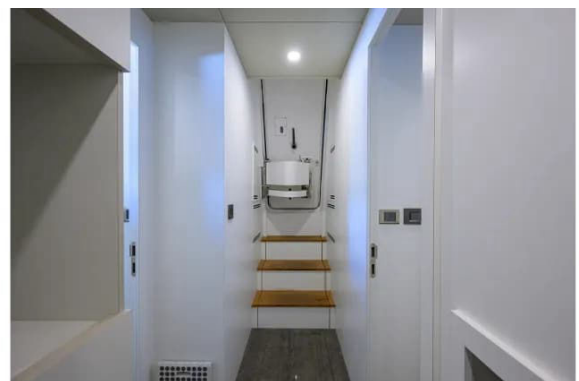














---

# DETAILED DESCRIPTION

---

## Noise and vibration control

---

Developed in concert with Van Cappellen consultants, this yacht is engineered to the highest standards of noise and vibration control: every machine is individually analyzed to determine the optimal mounting and connection strategy, delivering maximum isolation and preventing the transfer of vibration into the structure, while free airborne noise is minimized and encapsulated using the latest sound-absorbent and sound-blocking technologies. The result is a serene onboard experience that complies with, and in many aspects exceeds, the stringent RINA Comfort Class.

## Main deck and cockpit

---

The main deck is richly appointed with teak-laid side decks, foredeck, flybridge stairway and cockpit floor, all accented by stainless-steel fittings, a pulpit and side rails. Ground tackle is authoritative, with a stainless-steel bow roller and plate, twin eighty kilogram stainless-steel anchors on two 100 m galvanized chains, and electric anchor winches offering three-station control, supported by a dedicated chain locker with integral fender stowage and bow rope locker. Seamless operations are assured by pantograph windscreen wipers and washers, port and starboard fuel fillers, a fresh-water filler, and a proud ensign staff with socket. Social spaces abound, including forward seating with a table and a sunbed with plush cushions, while a cockpit wet bar with sink, hot and cold water and a refrigerator keeps refreshments to hand. After a swim, a hot-and-cold handheld shower awaits at the transom, and low-level deck lighting sets the evening mood, aided by a cockpit camera. Shore power is robust via twin 230 V 63 A AC connections, with a central control panel governing the hydraulic lifting platform, emergency fuel shutoff valves, the

engine-room fire-extinguishing activation system and engine shutdown switches. Practical necessities include a holding tank with dockside pump-out and a watertight pantograph transom door. For entertainment, the cockpit features two JL Audio speakers and a subwoofer driven by the Fusion system, complemented by two JL Audio speakers on the foredeck.

## Bathing platform

---

A teak-laid hydraulic bathing platform, rated to a maximum lifting capacity of 700 kg, forms a private beach at the waterline, served by teak-tread stairs up to the aft cockpit. A slide-out stainless-steel swim ladder and two stainless-steel tender cleats complete a purposeful, elegant waterside arrangement.

## Flybridge

---

The flybridge welcomes you with a teak-laid deck, a dedicated helmsman's seat and a generous seating area with storage lockers beneath, centered around a handsome teak dining table and complemented by loose furniture and an upholstered forward sunbathing area. Stainless-steel safety rails encircle the deck, while a fully equipped wet bar with sink, hot and cold water, electric barbecue, refrigerator and ice maker elevates open-air entertaining. Above, a GRP radar arch integrates downlighting, a remote-controlled searchlight and twin horns, and supports navigation lights, a four kW radar antenna and VHF whip aerials. Practical touches include a companionway hatch to the aft cockpit, a bimini cover, a flag staff, a console cover, and two JL Audio speakers driven by the Fusion system.

## Flybridge helm station

---

Purpose-built for command and clarity, the flybridge helm features electro-hydraulic power steering with an adjustable tilt wheel, full engine controls and instrumentation, trim tab control with indicator for the semi-displacement configuration, windlass controls, and bow and stern thruster control, all guided by a magnetic compass and a rudder angle indicator. Intuitive switching governs navigation, anchor and lighting functions, with horn and searchlight controls at hand, while a 16" multifunction display, autopilot display, Tridata digital readout for depth, speed and temperature with GPS, and a second VHF handset provide comprehensive navigation and communication. An engine-room fire extinguisher warning system completes the safety suite.

## Salon and dining

---

The aft saloon is a welcoming retreat with sofa seating, a refined coffee table and scatter cushions, framed by a choice of varnished interior finishes and veneers, parquet flooring and lacquered ceiling panels. Entertainment rises at the touch of a button with a pop-up fifty inch flatscreen and a Harman Kardon HKTS 65BQ home theatre speaker system, while port and starboard electric drop-down windows, side windows with blinds and efficient air conditioning keep the ambiance perfectly tempered. Practical elegance continues with a storage cupboard unit, stainless-steel framed sliding patio door to the aft cockpit, LED overhead lighting and well-placed AC sockets. Forward, the dining area hosts a dignified table with six chairs, and a convenient day head in the passageway to the helm offers a toilet and a hot/cold water sink with mirror and extractor fan.

## Galley

---

Designed for serious culinary duty, the galley is climate-controlled and offered with a choice of varnished interior finishes and veneered cabinetry topped by a synthetic stone worktop, set over a durable epoxy floor coating.

Comprehensive equipment includes two fridge/freezers, a ceramic hob with extractor, a microwave/conventional oven and grill, a dishwasher, a stainless-steel sink with hot and cold water, and complete service for eight with crockery, cutlery, and both small and large eight-piece glassware sets.

Abundant storage in cupboards, drawers and top lockers, LED overhead lighting, AC sockets and a fire extinguisher ensure confidence and convenience. Flow is effortless via a sliding door to the dining area and a pantograph door to the side deck.

## Lower helm console

---

The lower helm is anchored by a captain's helm seat and a companion seating area to port with a table, all fronting a console finished in fine veneer with an elegant material top. Command systems include electro-hydraulic power steering with tilt adjustment, full engine controls and instrumentation, trim tab control with indicator for the semi-displacement configuration, anchor windlass controls, and bow and stern thruster controls, guided by a magnetic compass and a rudder angle indicator. Operational oversight comes via navigation, anchor and dashboard light switches, horn, bilge alarm panel monitoring, wiper and screen-wash control, fuel, fresh water and black water level monitoring, searchlight control and an engine-room fire extinguisher warning system. Navigation electronics comprise twin 16" multifunction displays, an autopilot display, a Tridata digital readout for depth, speed and temperature with GPS, and a VHF with AIS. Safety and power management are assured by a hand-held fire extinguisher, bilge pump controls and a main

AC/DC control panel with generator controls, while side-opening doors to both starboard and port decks, parquet flooring, a radio with speakers and red night lights complete a refined, functional command space.

## Master stateroom and ensuite

---

The full-beam master stateroom is a sanctuary of space and style, centered on a king-size bed with a spring mattress, linen and bedspread, with generous under-berth storage. Wardrobes, cupboards and drawers are complemented by bedside units with storage, bedside lights, an L-shaped seating area and a graceful writing desk, all finished in your choice of varnished veneers with bronze accents and upholstered ceiling panels. Ambient low-level LED lighting, air conditioning, a forty inch LED TV and a BOSE sound bar elevate relaxation, while blinds or curtains to all portholes, fitted carpet or parquet, and ample sockets and switches perfect the living environment. A separate walk-in wardrobe houses a built-in digital safe. The ensuite bathroom features a washbasin set into a synthetic stone vanity top, a white china macerator electric WC, and a full standing-height shower with a hinged glass door. The refined finish continues with selected varnished veneers and furniture panels, bonded glass windows with opening portlights and flyscreens, LED ceiling lights, sockets and switches, a mirror, designer stainless-steel taps and shower mixer, a curated set of bathroom fittings including towel ring and toilet roll holder, practical storage lockers and a synthetic stone floor, complete with a plush towel set.

## Vip stateroom, guest cabins and ensuites

---

The VIP stateroom offers a double bed with a spring mattress, linen and bedspread with storage beneath, a sofa, an emergency access hatch to the foredeck, and a thirty-two inch LED TV with a BOSE sound bar, all bathed in

light from a bonded glass window with an opening portlight and flyscreen. The port guest cabin mirrors the VIP's double-bed arrangement, while the starboard guest cabin provides twin beds, all with under-berth storage, bedside lights, low-level lighting, air conditioning, and blinds or curtains to the portholes. Throughout, a choice of varnished veneers and upholstered ceiling panels complement fitted carpet or parquet, with wardrobes, drawers and cupboards delivering abundant storage. Each cabin enjoys access to its own ensuite shower room featuring a washbasin set into a synthetic stone vanity top, a white china macerator electric WC, and a full standing-height shower with a hinged glass door. Finishes include selected varnished veneers and furniture panels, LED ceiling lights, sockets and switches, a mirror, designer stainless-steel tap and shower mixer, and a complete suite of bathroom fittings—toothbrush and glass holder, towel ring, soap dish and toilet roll holder—plus storage lockers, a synthetic stone floor and a coordinated towel set.

## Captain cabin and head

---

The captain's cabin is smartly appointed with a single bed complete with mattress, linen and bedspread, focused reading lights and air conditioning, with durable laminate furniture, panels and ceilings. Natural light and air flow through a stainless-steel opening porthole with flyscreen, while privacy is ensured by blinds or curtains to all portholes. Entertainment is provided by a nineteen inch LED TV, and a parquet floor adds warmth. The adjoining head features a washbasin set into a synthetic stone countertop, a white china macerator electric WC and a shower stall with a hinged glass door, all illuminated by LED ceiling lights and supported by sockets, switches, a mirror, mixer taps and practical storage lockers. A teak bathroom floor completes the maritime aesthetic.

---

## Crew cabin and head

---

The crew cabin provides practical comfort with a bunk bed complete with mattresses, linen and bedspreads, focused reading lights, efficient air conditioning and robust laminate furniture, panels and ceilings. A stainless-steel opening porthole with flyscreen brings in fresh air, complemented by blinds or curtains to all portholes, LED ceiling lights, a nineteen inch LED TV, and convenient sockets and switches over a handsome parquet floor. The adjacent head features a washbasin set into a synthetic stone countertop, a white china macerator electric WC and a shower stall with a hinged glass door, with a mirror, mixer taps, storage lockers and a teak bathroom floor completing a seaworthy, durable specification.

---

## Engine compartment and ancillaries

---

Engineering integrity is paramount in the engine compartment, with separate fuel filters and an automatic fire-extinguishing system that initiates engine, generator and fan shutdown, with indicators at both helm positions. Safety is further enhanced by automatic bilge pumps in each watertight compartment and automatic engine-room extractor fans with manual override. The space houses the generators, main battery banks, fresh-water pumps and a black-water holding tank, all installed for serviceability and reliability.

---

## Electrical system

---

Power is abundant and refined, delivered by an Onan twenty-seven kW 230 V 50 Hz four-cylinder diesel generator and an Onan seventeen kW 230 V 50 Hz four-cylinder diesel generator, both with sound shields, 12 V start and control panels. Shore connectivity is assured via twin dockside 230 V 63 A 50 Hz AC connection sockets, feeding a comprehensive 24 V and 12 V DC electrical

system with full circuit breaker protection. Capacity is robust with a 24 V engine battery bank of 220 Ah, a 24 V auxiliary battery bank of 880 Ah, and two 12 V generator batteries, plus a dedicated 24 V battery bank for windlasses and thruster with split banks 2+2 to allow 48 V for the thruster. A 5,000 W 24 VDC/230 VAC inverter, an alternator combined charging system, 120 A and 80 A battery chargers for the 24 V circuits and a 20 A charger for the 12 V circuits maintain seamless supply. Comfort is supported by a two kW immersion heater for the hot-water tank, AC sockets throughout the boat and 230 VAC fin stabilizers.

## Underwater gear

---

Underwater running hardware is engineered for performance and longevity, with five-blade NAB bronze propellers, NAB bronze P-brackets, stainless-steel Marinemet 25 duplex shafts and driplless shaft logs. High-performance bronze rudders, a full cathodic bonding system to aluminium anodes, electric bow and stern thrusters, hydraulic trim tabs and black antifouling complete a formidable and efficient drivetrain.

## Systems

---

Helm feel is precise with hydraulic power steering, while climate is mastered by a chilled-water, Mediterranean-spec reverse-cycle air-conditioning system with chillers installed in the engine room and individually controlled fan coils in every cabin. Fresh water is carried in a single integral 2000 liter GRP tank beneath the guest cabin (with inspection manhole), complemented by a 75 liter hot-water tank in the engine room, with tank level sensors and gauges at the helm. Automatic water pumps with filtration ensure consistent pressure. Waste is expertly managed by a comprehensive grey and black water system: a 1000 liter HDPE black-water holding tank in the engine-room bilge, a

pressurized fresh-water WC system linked to the holding tank, macerator toilets and both dockside and overboard discharge via a low-noise electric macerator pump, all monitored by tank level gauges. Bilge vigilance is provided by six automatically controlled pumps with manual override across each accommodation area, the engine room and the lazarette. The seawater system features two intakes for main engine cooling, two for generator cooling and one dedicated intake for air-conditioning compressor cooling.

## Miscellaneous

---

Completing the specification are eight fenders and six mooring ropes, life jackets supplied in accordance with flag authority requirements (berths plus two), a stainless-steel boat name, and tailored windscreen and side-screen covers to protect and present the yacht impeccably at berth.

## Summary of equipment

---

This yacht arrives comprehensively equipped: electric fin stabilization; twin marine generators of twenty-seven kW and seventeen kW; full air conditioning and heating via a central chiller plant with individually controlled fan coils in each cabin; and a hydraulic lifting platform with teak-laid bathing platform and steps, teak side decks and foredeck, teak flybridge stairway, flybridge and cockpit floor. Ground tackle is professional grade with twin electric anchor winches and controls from the foredeck and both helm stations. Electrical infrastructure spans 24 V DC and 230 V AC, supported by twin 230 V 63 A shore power inlets and battery chargers. Comfort and convenience flow from a hot-and-cold swimming shower at the stern, a side-opening pantograph helm access door, and power-assisted hydraulic steering. The flybridge wet bar is fully appointed with sink, hot and cold water, electric barbecue, refrigerator and ice-maker, while flatscreen televisions in all guest and crew cabins are

pre-wired for SAT, feeding a sixty cm satellite dish TV system. Entertainment extends with a FUSION/JL Audio package across the saloon and exterior—cockpit, bow and flybridge—plus a soundbar entertainment system in the master stateroom and an Extreme Music System upgrade for saloon and cockpit. Galley provisioning includes an electric refrigerator and freezer, a ceramic hob, a microwave/conventional oven/grill and a dishwasher, while restful nights are assured by spring/latex mattresses in all guest cabins. Navigation and communications are delivered by Raymarine dual-station electronic depth and speed displays, a Raymarine autopilot and VHF with AIS, and Raymarine radar with a 16" multifunction display at each station. Hotel services include a hot and cold water system, twin fresh-water pumps, a toilet system with holding tank, an automatic engine-room fire extinguishing system and automatic bilge pumps. Manoeuvrability is effortless with electric bow and stern thrusters and dual-station hydraulic trim tabs with indicators for the semi-displacement configuration, assisted by a remote-controlled searchlight. Exterior living is enhanced by a manual flybridge bimini system, a flybridge sunbed with cushions, and a watertight pantograph transom door, while crew are accommodated in a fully fitted twin-berth cabin. Dockside practicality comprises electric stern rope mooring winches, antifouling, four underwater transom lights, dual fuel filters, a washer/dryer, four cameras with a wheelhouse monitor, isolation transformers and CE Category A classification. Further refinements include an extended flybridge sun top, an electro-hydraulic telescopic passarelle, Glendinning shore cable recovery with twin shore lines, onboard WiFi, a water maker producing 220 L/hr, a 3M bacteria purification water filter system for the galley tap and icemakers, a bow sunshade with carbon poles and fitted seat covers.

## Disclaimer

---

The details of this yacht are offered in good faith but no guarantee is made as

to the accuracy of the information or the condition of the vessel. The yacht is offered subject to prior sale, price change or withdrawal from the market without notice, provided as general information to prospective purchasers and without intent to convey direct representation of a specific yacht for sale.

# CONTACTS

---

Shestakov Yacht Sales is a brokerage company specializing in the sale and service of yachts worldwide. The company offers services for buying and selling both new and used motor yachts, sailing vessels, and luxury superyachts. They also provide yacht registration, insurance, technical maintenance, crew selection, and charter organization services across the U.S., Canada, Latin America, the Caribbean, and the Bahamas.

The founder and lead broker of the company is Andrey Shestakov, a licensed and certified expert with extensive experience in marine engineering and shipbuilding.

The company has an extensive network of partnerships with major yacht manufacturers worldwide and provides services in multiple languages, including Russian, Ukrainian, Spanish, and English. The office is in Dania Beach, Florida, USA.

For more information and to view available yachts, you can visit the company's official website: <https://shestakovyachtsales.com>

## Contact details

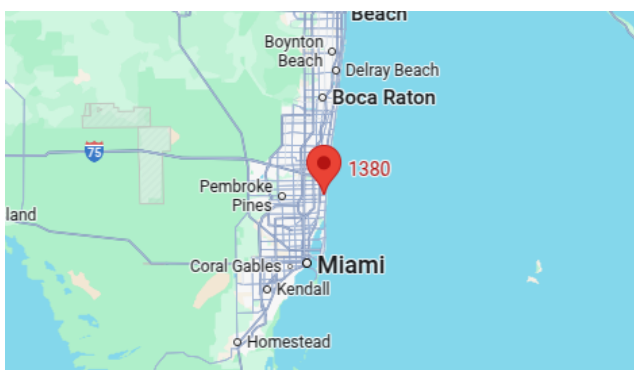
---

**Phone:** +1(954)274-4435

**Email:** [andrey@shestakovyachtsales.com](mailto:andrey@shestakovyachtsales.com)

## Address

---



1380 Weeping Willow Way, Hollywood,  
Florida 33019